

**MISSION DATA CARD**

OPORD		Callsign	Mission	Date/Time		
3130/2024		Nazgul 6	Training	222000AUG24		
Task	Training				Freq	
AO					262.45	
Departure			Recovery			
FYTTR THREE			STRYK			
#	Callsign	Pilot	IFF	TCN	LSR	NET
-1	Nazgul 6-1	Razorback/Uta	1161	1Y	1561	
-2	Nazgul 6-2	Tank/TaB	1162	64Y	1562	
-3	Nazgul 6-3	Repsus	1163	64X	1563	

**LOADOUT**

A/A	2xA120C, 2xA9M	GUN	100% SAPHEI
A/G	2xG311B, 2xG10	CHF	120
POD	TGT, NAV	FLR	60
TKS		FUEL	100%

**TOLD**

	Takeoff	Target	Joker	Bingo	Land
FUEL	22588			4000	

**AIRBASES**

	Name	TCN	ATIS	GND	TWR	RWY	Elev	ILS
Dep	Nellis AFB	12X	270.1	275.8	327.0	21L	1850	109.1
Arr	Nellis AFB	12X	270.1	275.8	327.0	21L	1850	109.1
Div	Creech AFB	87X	290.45	275.8	360.6			

**FLIGHTPLAN**

#	Name	Navaid/Coords/DME	ALT	TOT
1	FYTTR	LSV 269/33 (N36 21.440 W115 41.470)	15000	
2	JAYSN	N36 34.425 W116 02.444	25000	
3	FLUSH	LSV 287/73 (N36 50.800 W116 20.270)	30000	
4	Range 75E	N37 27.024 W116 26.506	30000	
5	T75.29	N37 22.865 W116 26.854	5324	

**COMMS**

Radio	Usage
1	262.45
2	3,4,16,289.7

**SUPPORT****Tanker**

Callsign	TCN	Freq	ALT	TAS
TEXACO 2	95Y	289.7	FL220	420
	Pos	Pegasus.1: CDC 166/102 (N3730 W11440)		

**AWACS**

Callsign	Freq	ALT	Pos
MAGIC	377.8	FL270	N3749 W11417 - N3713 W11446

## OTHER FLIGHTS

Callsign	Mission	Airframe	Freq	TCN	Grpld	Laser
Tiger 1	Training	4x F/A-18C	261.15	1/64		155X
AO		Task	VFR Route			
Edelweiss 1	Training	4x F/A-18C	264.15	1/64		171X
AO		Task				
Raptor 1	Training	4x F-16C	134.0	1/64		162X
AO		Task				
Monster 1	Training	4x A-10C	132.15	1/64	21	161X
AO	S/E OF LAS VEGAS	Task	CDU EXERCISES			
Edelweiss 1	Training	1x F-16C	264.15	1/64		171X
AO		Task				
Edelweiss 1	Training	2x A-10C	131.15	4/67	30	161X
AO	S/E OF LAS VEGAS	Task	VFR			
Rattler 1	Training	4x AH-64D	133.5	1/64		125X
AO		Task				

**RADIO CHANNELS**

#	Freq	Name
1		Flight/Squadron specific
2	289.4	Nellis Clearance Delivery
3	275.8	Nellis Ground
4	327.0	Nellis Tower
5	385.4	Nellis Approach/Departure West
6	273.55	Nellis Approach/Departure East
7	317.525	Nellis Control -- Sally
8	254.4	Nellis Control-- Lee
9	305.6	SOF Bullseye
10	343.725	EMERGENCY SINGLE FRQ
11	270.1	Nellis ATIS
12	360.625	Creech AFB Tower
13	250.1	HAVE QUICK 13
14	251.1	HAVE QUICK 14
15	252.1	HAVE QUICK 15
16	377.8	Blackjack
17	265.0	KC-135 AR-641A
18	360.8	KC-135MPRS AR-635
19	319.8	KC-135MPRS AR-625
20	300.05	KC-135 AR-231V

**RAMROD**

0	1	2	3	4	5	6	7	8	9
P	L	E	A	S	U	R	I	N	G

**KTC 1400 C**

	0	1	2	3	4	5	6	7	8	9
A	TKOQ	WFI	SCG	RN	EH	BJP	MY	LD	VU	XA
B	DYSG	EBQ	FXI	LN	UR	APH	VK	CW	TM	JO
C	XAIR	DFV	TJY	GW	CE	QNK	OU	BS	MH	PL
D	ONUH	QLX	BTR	JS	MK	FGV	WD	IP	YC	AE
E	WOSM	NFX	YBQ	GD	RC	IKL	UJ	HP	AT	EV
F	XLUR	PFI	HSE	TQ	ON	YWJ	CV	MK	BG	AD
G	MPHO	SBJ	DRF	UA	IW	GCV	NQ	LY	ET	KX
H	VSPU	KBG	HNW	FA	QD	RCL	OI	XM	ET	YJ
I	EDCH	WYA	LTR	OP	KB	JFI	XU	NM	SV	QG
J	WCGB	VKU	AMJ	HY	FP	ROL	IQ	TX	SD	EN
K	VUCB	HSA	OMW	XD	YK	JGE	LT	IP	FN	RQ
L	PKMB	JDG	FAR	SU	TO	VXQ	NW	CY	EL	IH
M	DLUV	WPM	QTX	CH	RS	IBK	EA	OJ	YN	FG
N	PAHD	WCE	MIX	YL	JV	NTF	BS	GQ	UR	OK
O	SAXC	YRD	OLF	EQ	UK	MNH	VJ	BI	GW	TP
P	JAKL	TIF	QGY	OS	BC	UPE	DR	MN	VW	HX
Q	IJOH	TRC	XBF	KM	PW	VNG	EY	LQ	US	DA
R	YVST	XJF	EBG	OR	DC	LHK	IM	AQ	WP	UN
S	WEBP	XNK	GFA	YL	QC	RVH	ID	JT	SO	MU
T	ATIQ	HLD	ECP	OX	YJ	VUF	NM	RK	GB	SW
U	OLCW	BYD	QIT	SM	FU	EKV	RG	HP	JA	XN
V	GFKB	RVH	AMU	LY	CT	XSE	JP	ND	WI	OQ
W	RLXA	JNG	MPC	SI	OY	VEU	HQ	KD	WF	BT
X	WTCX	MRG	AOI	NE	QV	DPY	SH	FJ	UL	KB
Y	KNOT	SUM	HAQ	VG	EJ	DRI	CB	LP	XW	YF

**NAVAIDS**

<b>Id</b>	<b>Name</b>	<b>Channel</b>	<b>Position</b>	<b>Elevation</b>
BCE	Bryce Canyon	75	N3741.35 W11218.23	9040
BIH	Bishop	33	N3722.62 W11821.99	4114
BLD	Boulder	114	N3559.75 W11451.82	3650
BTY	Beatty	94	N3648.54 W11644.86	2925
CDC	Cedar City	120	N3747.24 W11304.90	5463
DAG	Daggett	79	N3457.75 W11634.69	1760
EED	Needles	99	N3445.96 W11428.43	650
GFS	Goffs	91	N3507.87 W11510.59	4019
GRL	Groom Lake	18	N3713.91 W11548.16	4475
HEC	Hector	74	N3447.83 W11627.78	1854
ILC	Wilson Creek	110	N3815.02 W11423.65	9318
INS	Creech AFB	87	N3635.20 W11540.12	3101
LAS	McCarran Intl	116	N3604.78 W11509.59	2142
LSV	Nellis	12	N3614.68 W11501.50	1864
MLF	Milford	58	N3821.62 W11300.79	4977
MMM	Mormon Mesa	90	N3646.16 W11416.65	2120
MVA	Mina	98	N3833.92 W11801.97	7860
OAL	Coale Dale	124	N3800.20 W11746.23	4800
PGS	Peach Springs	57	N3537.48 W11332.67	4754
TPH	Tonopah Muni	119	N3801.84 W11702.01	5330
TQQ	Silverbow	77	N3748.00 W11647.00	5500
UTI	St George	23	N3705.29 W11335.53	2871



RWY 3L-21R  
 PCN 46 R/C/W/T  
 RWY 3R-21L  
 PCN 51 R/C/W/T  
 2017

PAR	RWY	CAT	MINIMA		ARP	ELEV	Scale 1:35'500	
	21L	A B D E	2057 - 0.8 200 (200-0.8/1.6)	GS 3°	36° 14.060° N 115° 01.058° W	1857 [ft] 566 [m]	0 300 600 900 1200 1500 [m]	
	3R	A B D E	2057 - 0.8 200 (200-0.8/1.6)	GS 3°			0 1000 2000 3000 4000 5000 [ft]	
SRA	21R	A C D E	2257 - 1.2 350 (350-1.2/1.6)					
	3L	A C D E	2257 - 1.2 350 (350-1.2/1.6)					

RWY	TORA	TODA	ASDA	LDA	PSN	THR	ALS
21L	10051 [ft] 3063 [m]	11051 [ft] 3368 [m]	11051 [ft] 3368 [m]	10051 [ft] 3063 [m]	36°14.043' N	115°01.018' W	⊕
3R	10120 [ft] 3084 [m]	11120 [ft] 3398 [m]	11120 [ft] 3398 [m]	10120 [ft] 3084 [m]	36°13.029' N	115°02.038' W	

ATIS	NELLIS GROUND	NELLIS TOWER	NELLIS CONTROL	TACAN	ILS RWY 21L	NELLIS EAST	NELLIS WEST
270.100 MHz	275.800   121.800	327.000   132.55	317.525	LSV 12X	109.10 Mhz	384.400	385.000



**FYTTR THREE DEPARTURE** IFR CHART | VALID 2014 LAS VEGAS, NEVADA

ATIS  
270.100  
NELLIS GROUND  
275.800  
NELLIS TOWER  
327.000  
NELLIS CONTROL  
317.525  
NELLIS DEP/APP EAST  
384.400  
BLACKJACK  
377.800



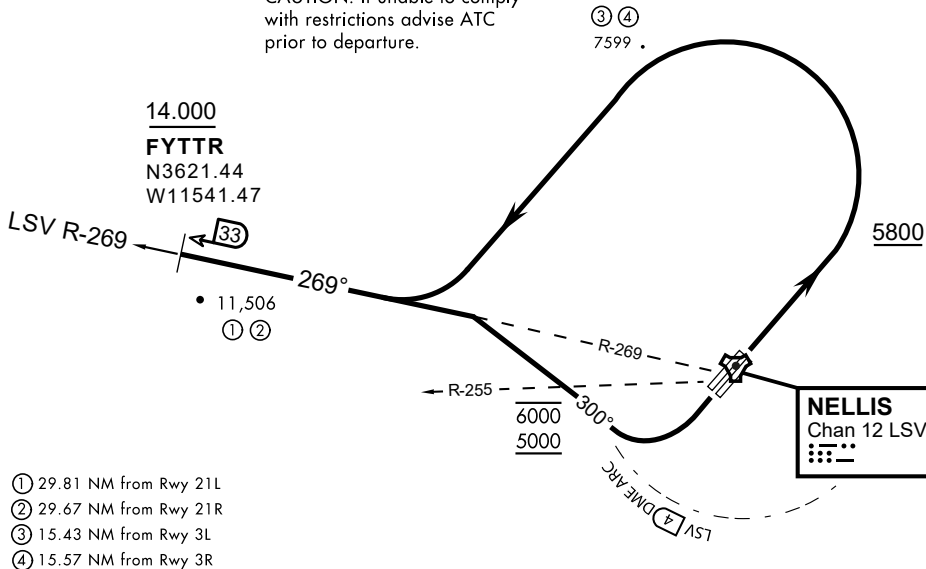
Rwy	Knots	60	120	180	240	300	360
3L (a)	V/V(fpm)	394	788	1182	1576	1970	2364
3R (a)	V/V(fpm)	392	784	1176	1568	1960	2352
21L (b)	V/V(fpm)	388	776	1164	1552	1940	2328
21R (b)	V/V(fpm)	390	780	1170	1560	1950	2340

Minimum Climb Rate

(a) to 9300

(b) to 13 500

CAUTION: If unable to comply with restrictions advise ATC prior to departure.



- ① 29.81 NM from Rwy 21L
- ② 29.67 NM from Rwy 21R
- ③ 15.43 NM from Rwy 3L
- ④ 15.57 NM from Rwy 3R

**DEPARTURE ROUTE DESCRIPTION**

TAKEOFF RWY 3L/R

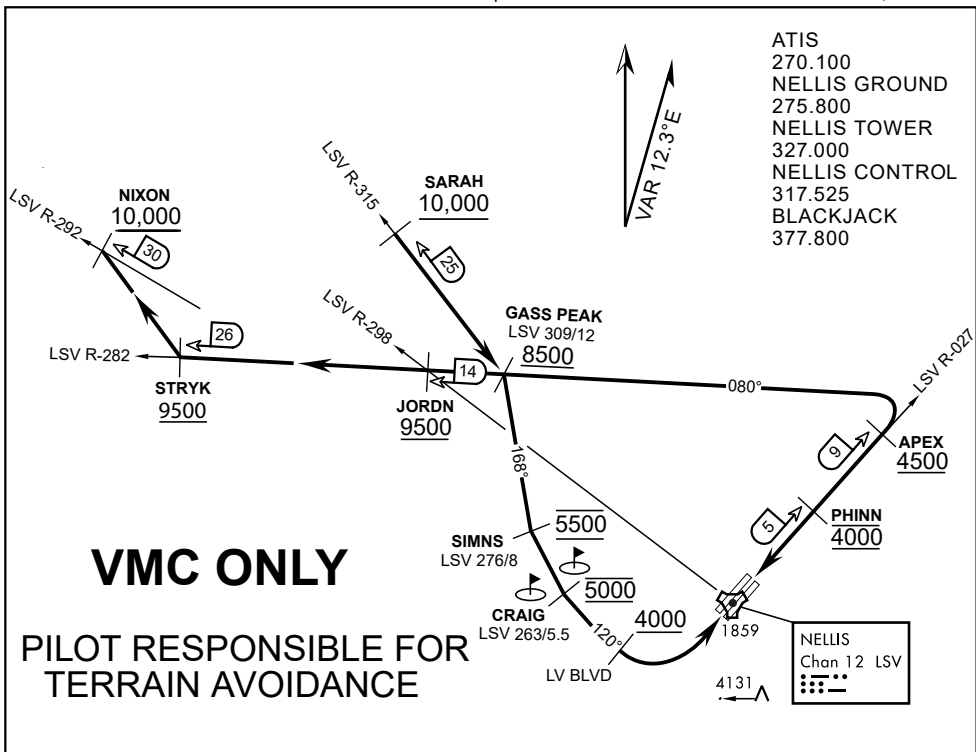
- Fly runway heading until reaching 5,800'.
- Then climbing left turn to intercept LSV TACAN R-269 outbound.
- Cross FYTTR at or above 14,000' or as assigned, then via assigned route.

TAKEOFF RWY 21L/21R

- Turn right to intercept LSV TACAN R-269 outbound.
- Remain within LSV 4 DME until joining LSV R-269
- Cross R-255 between 5,000' and 6,000'.
- Cross FYTTR at or above 14,000' or as assigned, then via assigned route.

**NOISE ABATEMENT PROCEDURES:**

Fly according Nellis Noise Abatement instructions as published



**APPROACH ROUTE DESCRIPTION**

**APPROACH RWY 3L/R**

Cross STRYK at or above 9,500' MSL, proceed direct GASS PEAK. Cross JORDN at or above 9,500' MSL, cross GASS PEAK at or above 8,500' MSL. Proceed direct SIMNS and cross at 5,500' MSL. Cross Las Vegas Blvd at or above 4,000' MSL then to 3,500' MSL for Initial. Remain within 4 DME if LSV on turn to final.

**VFR STRAIGHT-IN RWY 3L/R**

Depart CRAIG & descend to be at 3,000' MSL by Las Vegas Blvd. Do not descend below 3,000' MSL until within 5 DME of LSV or 4 NM of the runway on turn to final.

**APPROACH RWY 21L/R**

Cross STRYK at or above 9,500' MSL, proceed direct GASS PEAK. Cross JORDN at or above 9,500' MSL, cross GASS PEAK at or above 8,500' MSL. Cross APEX at or above 4,500' MSL then direct 5NM initial. Descend to cross PHINN at 4,000' MSL, Inside 5 NM descend to 3,500' MSL.

**VFR STRAIGHT-IN RWY 21L/R**

Cross APEX at 4,000' MSL. Descend to be at 3,000' MSL at PHINN. Descend to 3,000' MSL at LSV 027/5.

**RANGE 63B EXIT**

**SOUTH:** Via NIXON at or above 10,000' MSL, then direct STRYK.  
**EAST:** Via SARAH at or above 10,000' MSL, then direct GASS PEAK.



INDIAN SPRINGS, NEVADA

TACAN INS Chan 87	APCH CRS 294 °	Rwy Idg TDZE Arprt Elev	9002 3133 3113
----------------------	-------------------	-------------------------------	----------------------

INDIAN SPRINGS AF AUX (KINS)

**▽** \* MISSED APPROACH: Direct INS then outbound INS **t8:2#DME** climbing to 10,000.

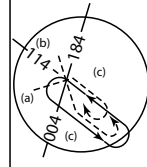
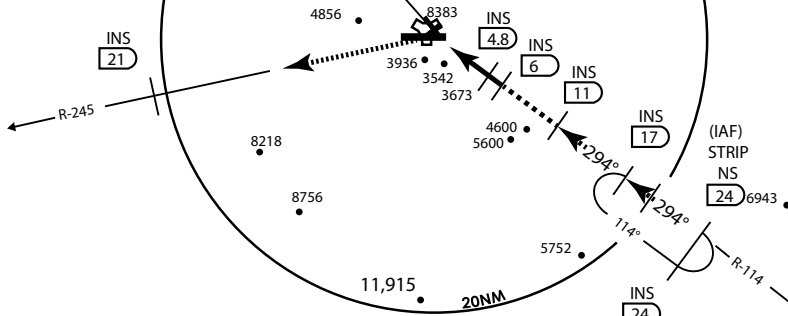
NELLIS CON -	INDIAN SPRINGS TOWER 118.30 <b>U</b> 60.60	GND CON -
-----------------	---	--------------

**NOT FOR CIVIL USE**

5975 •

**CAUTION:** Final approach course does not cross Runway centerline prior to threshold. Maneuvering right of course required prior to landing.

CREECH AFB  
Chan 87 INS



Modified by vJaBoG 66 for use with DCS

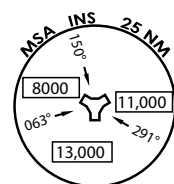
Modified by vJaBoG 66 for use with DCS

NOT FOR REAL LIFE NAVIGATION

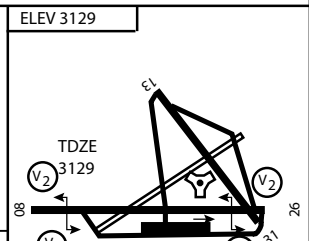
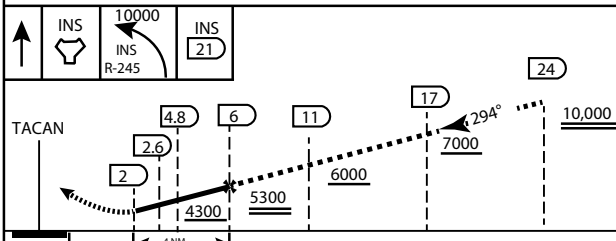
\* CAUTION: Missed Approach Climb Rate to 4,700

Knots	60	120	180	240	300	360
V/V (fpm)	450	900	1350	1800	2250	2700

Controlling Obstacle 3936



EMERG SAFE ALT 100 NM 14,000



CATEGORY	A	B	C	D	E
S-26	3800-2 ¼	697 (700 2 ½)			3800-2 ¼ 697 (700-2 ½)
CIRCLING	NOT AUTHORIZED				

ELEV 3129
MIRL Rwy 8-26 <b>0</b>

CITY OF INDIAN, NEVADA

INDIAN SPRINGS AF AUX (KINS)



# AIRPORT DIAGRAM

476 VFG

CREECH AFB (KINS)  
INDIAN SPRINGS, NEVADA

ATIS  
 122.5  
 CREECH TOWER  
 118.4 360.7 38.65  
 GND CON  
 118.3 275.8  
 CLNC DEL

115°42'W

FIELD  
 ELEV  
 3127

80

972 X 150

HOT CARGO PAD

BAK-12

VAR 12.5° E

WEST EOR

115°41'W

476 VFG JAN 2019

CONTROL TOWER  
 BASE OPS

RPA LOLA WEST

RPA LOLA EAST

LOLA / HUNG ORDNANCE

199 X 100  
 ELEV 3127  
 RUNWAY 31/13  
 MQ/RQ-1 ONLY

9002 X 150

258.5°

860 X 100

313.8°

4064 X 100

115°40'W

BAK-12

ELEV 3127

EAST EOR

1030 X 150

26

476 VFG JAN 2019

# AIRPORT DIAGRAM

INDIAN SPRINGS, NEVADA  
CREECH AFB (KINS)