

MISSION DATA CARD

OPORD		Callsign		Mission		Date/Time		
3129/2024		Edelweiss		Training		301944AUG24		
Task						Freq		
AO						264.05		
Departure				Recovery				
HELICOPTER DEP				STRYK				
#	Callsign		Pilot		IFF	TCN	LSR	NET

LOADOUT

A/A						GUN	
A/G						CHF	
POD						FLR	
TKS						FUEL	

TOLD

	Takeoff	Target	Joker	Bingo	Land
FUEL	11087				

AIRBASES

	Name	TCN	ATIS	GND	TWR	RWY	Elev	ILS
Dep	Nellis AFB	12X	270.1	275.8	327.0	21L	1850	109.1
Arr	Nellis AFB	12X	270.1	275.8	327.0	21L	1850	109.1

OTHER FLIGHTS

Callsign	Mission	Airframe	Freq	TCN	Grpld	Laser
Pontiac 2	Transport	1x Mi-8	264.05	4/67		170X
AO		Task				

RADIO CHANNELS

#	Freq	Name
1		Flight/Squadron specific
2	289.4	Nellis Clearance Delivery
3	275.8	Nellis Ground
4	327.0	Nellis Tower
5	385.4	Nellis Approach/Departure West
6	273.55	Nellis Approach/Departure East
7	317.525	Nellis Control -- Sally
8	254.4	Nellis Control-- Lee
9	305.6	SOF Bullseye
10	343.725	EMERGENCY SINGLE FRQ
11	270.1	Nellis ATIS
12	360.625	Creech AFB Tower
13	250.1	HAVE QUICK 13
14	251.1	HAVE QUICK 14
15	252.1	HAVE QUICK 15
16	377.8	Blackjack
17	265.0	KC-135 AR-641A
18	360.8	KC-135MPRS AR-635
19	319.8	KC-135MPRS AR-625
20	300.05	KC-135 AR-231V

RAMROD

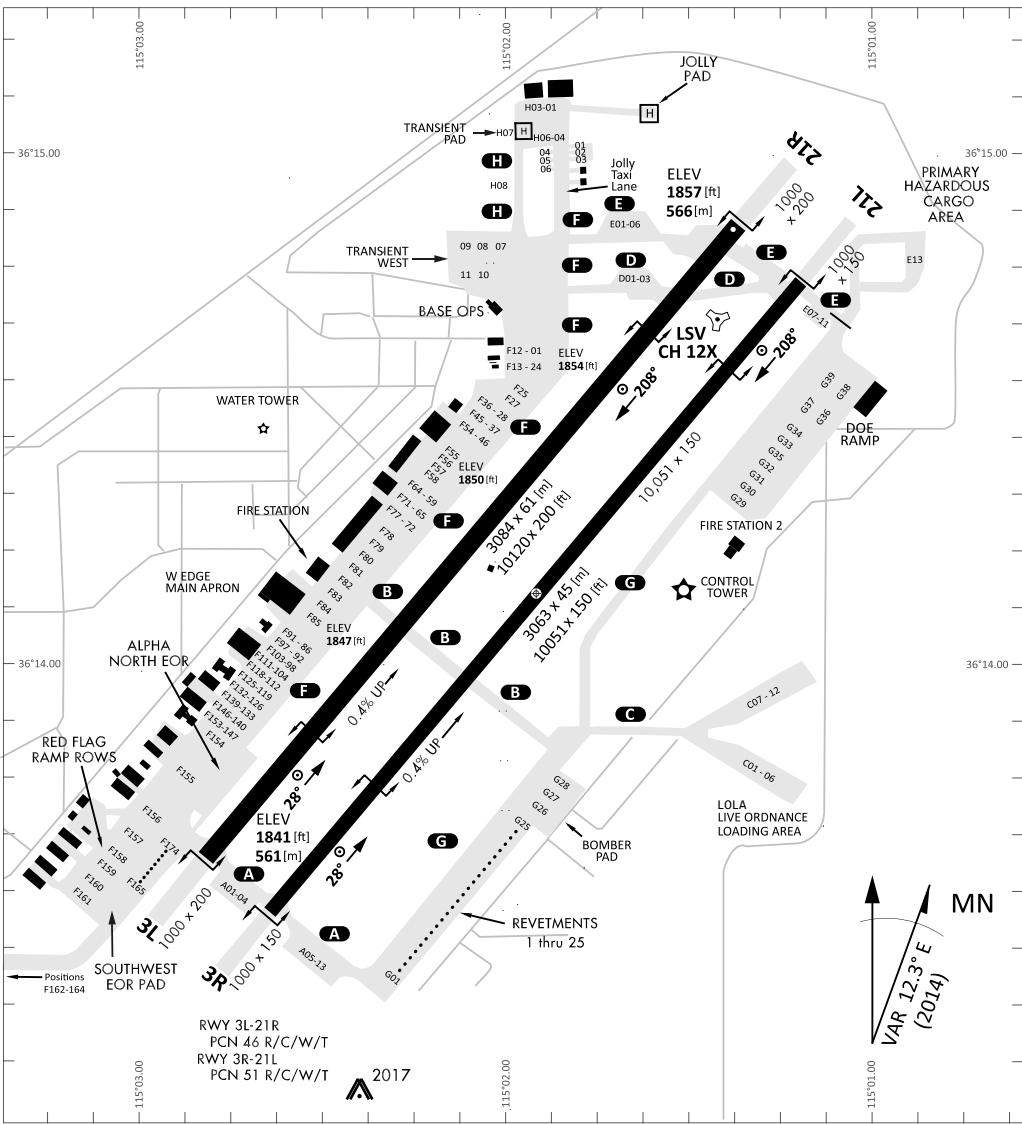
0	1	2	3	4	5	6	7	8	9
D	I	S	C	O	U	R	A	G	E

KTC 1400 C

	0	1	2	3	4	5	6	7	8	9
A	TMOL	QSV	CFX	HW	KP	UBR	IN	JY	AD	GE
B	EUIG	NYR	JTM	DV	WB	HKS	QP	FO	AC	LX
C	FKWM	DYA	CQI	RX	SO	BJH	LE	VG	UT	PN
D	UXYR	WJS	QAH	ID	NE	BCM	KF	OP	VT	GL
E	PQBU	VTX	WDM	YH	GE	JRI	LF	KC	AO	SN
F	NLWQ	JOI	KBG	SP	VE	FTA	YU	RD	XM	HC
G	UIMP	CJB	VRA	OY	XH	KLE	QW	NS	DT	GF
H	VUYT	DLX	JEC	BA	WF	NGM	HQ	KI	PR	OS
I	SHYJ	WKO	DTQ	XB	CN	RVF	EL	GP	UA	MI
J	PTFY	MXV	ILA	HN	DW	QKE	RG	BO	JS	UC
K	VFGU	BNI	JLO	WC	KQ	PHM	RE	SD	AX	YT
L	SCMB	IPT	OLU	HY	EQ	JFW	RA	GV	ND	XK
M	ANJY	RKL	ITG	DC	FX	BUV	SP	EH	WM	QO
N	TCHB	MYD	NVF	LP	IX	WJE	RA	SK	UG	QO
O	UIDE	XBS	YAP	OM	VQ	WRF	TG	KJ	NC	HL
P	XBSI	CGA	VDY	LW	EU	TQH	OP	FK	NR	JM
Q	HVFD	YMX	LSQ	KT	PW	UIA	OG	JN	CE	RB
R	FSOJ	AYP	DIK	GR	XH	LMB	CW	EV	UT	QN
S	WNTH	RES	MBG	JF	YQ	IUV	XA	PL	KC	OD
T	BHFU	XPJ	NQG	EA	DO	VYW	LT	MK	RS	CI
U	LHIK	EUA	NRT	DP	JM	QOC	VF	XW	BS	GY
V	TKOA	REV	LDY	IQ	JP	HBC	MF	GU	WN	XS
W	NUIM	BDS	YAW	EG	JX	TOK	QC	RV	PF	HL
X	HRIT	FYL	KQP	UN	XC	WJG	BE	AM	OV	SD
Y	JDOA	IMP	VBE	GN	SC	WRF	QL	HK	TX	YU

NAVAIDS

Id	Name	Channel	Position	Elevation
BCE	Bryce Canyon	75	N3741.35 W11218.23	9040
BIH	Bishop	33	N3722.62 W11821.99	4114
BLD	Boulder	114	N3559.75 W11451.82	3650
BTY	Beatty	94	N3648.54 W11644.86	2925
CDC	Cedar City	120	N3747.24 W11304.90	5463
DAG	Daggett	79	N3457.75 W11634.69	1760
EED	Needles	99	N3445.96 W11428.43	650
GFS	Goffs	91	N3507.87 W11510.59	4019
GRL	Groom Lake	18	N3713.91 W11548.16	4475
HEC	Hector	74	N3447.83 W11627.78	1854
ILC	Wilson Creek	110	N3815.02 W11423.65	9318
INS	Creech AFB	87	N3635.20 W11540.12	3101
LAS	McCarran Intl	116	N3604.78 W11509.59	2142
LSV	Nellis	12	N3614.68 W11501.50	1864
MLF	Milford	58	N3821.62 W11300.79	4977
MMM	Mormon Mesa	90	N3646.16 W11416.65	2120
MVA	Mina	98	N3833.92 W11801.97	7860
OAL	Coale Dale	124	N3800.20 W11746.23	4800
PGS	Peach Springs	57	N3537.48 W11332.67	4754
TPH	Tonopah Muni	119	N3801.84 W11702.01	5330
TQQ	Silverbow	77	N3748.00 W11647.00	5500
UTI	St George	23	N3705.29 W11335.53	2871



RWY 3L-21R
 PCN 46 R/C/W/T
 RWY 3R-21L
 PCN 51 R/C/W/T
 2017

PAR	RWY	CAT	MINIMA		ARP	ELEV	Scale 1:35'500	
	21L	A B D E	2057 - 0.8 200	(200-0.8/1.6) GS 3°	36° 14.060° N 115° 01.058° W	1857 [ft] 566 [m]	0	300
	3R	A B D E	2057 - 0.8 200	(200-0.8/1.6) GS 3°			600	900
	21R	A C D E	2257 - 1.2 350	(350-1.2/1.6)			1200	1500 [m]
	3L	A C D E	2257 - 1.2 350	(350-1.2/1.6)			0	1000
							2000	3000
							4000	5000 [ft]

RWY	TORA	TODA	ASDA	LDA	PSN	THR	ALS
21L	10051 [ft] 3063 [m]	11051 [ft] 3368 [m]	11051 [ft] 3368 [m]	10051 [ft] 3063 [m]	36°14.043' N	115°01.018' W	⊕
3R	10120 [ft] 3084 [m]	11120 [ft] 3398 [m]	11120 [ft] 3398 [m]	10120 [ft] 3084 [m]	36°13.029' N	115°02.038' W	

ATIS	NELLIS GROUND	NELLIS TOWER	NELLIS CONTROL	TACAN	ILS RWY 21L	NELLIS EAST	NELLIS WEST
270.100 MHz	275.800 121.800	327.000 132.55	317.525	LSV 12X	109.10 Mhz	384.400	385.000

HELICOPTER ARR/DEP VAD-CHART | VALID 2014

NELLIS AFB (KLSV)
LAS VEGAS, NEVADA

ATIS
270.100
NELLIS GROUND
275.800
NELLIS TOWER
327.000
BLACKJACK
377.800

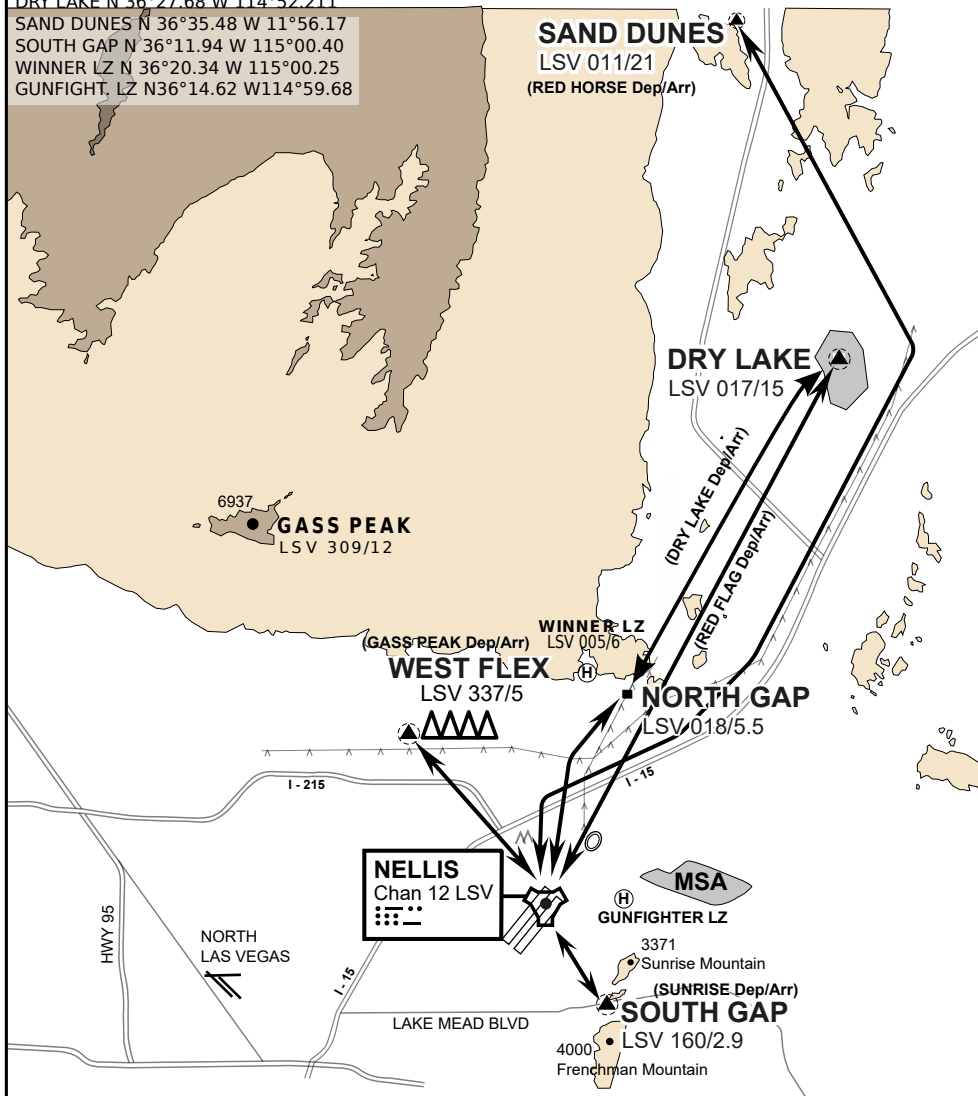
CAUTION: If unable to comply
with restrictions advise ATC
prior to departure.

VMC ONLY

if below WX Minima request SVFR



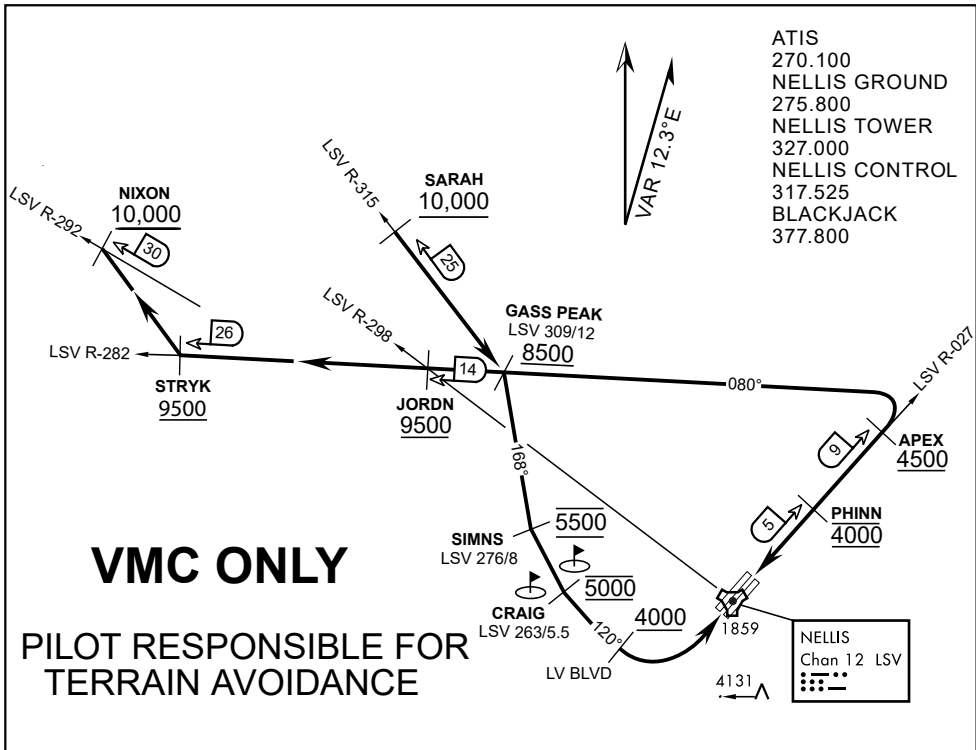
JOLLY PAD N 36°15.08 W 115°01.65
WEST FLEX N 36°18.64 W 115°08.00
NORTH GAP N 36°20.00 W 114°59.30
DRY LAKE N 36°27.68 W 114°52.211
SAND DUNES N 36°35.48 W 11°56.17
SOUTH GAP N 36°11.94 W 115°00.40
WINNER LZ N 36°20.34 W 115°00.25
GUNFIGHT, LZ N36°14.62 W114°59.68



vJABeG32NTRR NAV CHART

HELICOPTER ARRIVAL AND DEPARTURES ROUTES

v.110 22APR20



APPROACH ROUTE DESCRIPTION

APPROACH RWY 3L/R

Cross STRYK at or above 9,500' MSL, proceed direct GASS PEAK. Cross JORDN at or above 9,500' MSL, cross GASS PEAK at or above 8,500' MSL. Proceed direct SIMNS and cross at 5,500' MSL. Cross Las Vegas Blvd at or above 4,000' MSL then to 3,500' MSL for Initial. Remain within 4 DME if LSV on turn to final.

VFR STRAIGHT-IN RWY 3L/R

Depart CRAIG & descend to be at 3,000' MSL by Las Vegas Blvd. Do not descend below 3,000' MSL until within 5 DME of LSV or 4 NM of the runway on turn to final.

APPROACH RWY 21L/R

Cross STRYK at or above 9,500' MSL, proceed direct GASS PEAK. Cross JORDN at or above 9,500' MSL, cross GASS PEAK at or above 8,500' MSL. Cross APEX at or above 4,500' MSL then direct 5NM initial. Descend to cross PHINN at 4,000' MSL, Inside 5 NM descend to 3,500' MSL.

VFR STRAIGHT-IN RWY 21L/R

Cross APEX at 4,000' MSL. Descend to be at 3,000' MSL at PHINN. Descend to 3,000' MSL at LSV 027/5.

RANGE 63B EXIT

SOUTH: Via NIXON at or above 10,000' MSL, then direct STRYK.

EAST: Via SARAH at or above 10,000' MSL, then direct GASS PEAK.