

MISSION DATA CARD

OPORD		Callsign		Mission		Date/Time	
3127/2024		Monster 1		Training		222000AUG24	
Task	CDU EXERCISES					Freq	
AO	S/E OF LAS VEGAS					132.15	
Departure				Recovery			
MORMON MESA FOUR				ARCOE			
#	Callsign	Pilot		IFF	TCN	LSR	NET
-1	Monster 1-1	addiks		1411	1Y	1611	21/01
-2	Monster 1-2	Crusader		1412	64Y	1612	21/02
-3	Monster 1-3	Lenzi		1413	64X	1613	21/03

LOADOUT

A/A	A9L				GUN	100% CM	
A/G	7M156				CHF	0	
POD	A184L, TGP				FLR	480	
TKS					FUEL	100%	

TOLD

	Takeoff	Target	Joker	Bingo	Land
FUEL	11087				

AIRBASES

	Name	TCN	ATIS	GND	TWR	RWY	Elev	ILS
Dep	Nellis AFB	12X	270.1	275.8	327.0	21L	1850	109.1
Arr	Nellis AFB	12X	270.1	275.8	327.0	21L	1850	109.1

COMMS

Radio	Usage
1	132.15
2	11-3-4-16-11-4-3
3	32.25

NOTES

Übung: A10CDU01 - "Flugplan programmieren/fliegen"

Händische Programmierung der Wegpunkte 01 bis 09 am Boden (Siehe unten).

Abflug als Single-Ship sobald Programmierung des Flugplans abgeschlossen.

RW: 03L / 03R

Departure via: "MORMON MESA FOUR DEP" (Siehe Charts; Nur bis CUVAX / ZINAX, danach Flugplan)

Abfliegen der Wegpunkte (Siehe unten).

Bei #08:

- Meldepunkt #08 bei Lead melden
- in Holding zwischen #08 und #09 gehen (Deconfliction!)
- Letzte 3 Wegpunkte per Comms erhalten

Letzte Wegpunkte abfliegen

Arrival via: "ARCOE RECOVERY RWY 21"

Zu programmierende Wegpunkte:

#01: SHIEK | 5000ft MSL

#02: LatLong DM: N 36°08.455' W 114°18.984' | 3000ft MSL | CRS 090° TO-FROM

#03: MGRS: 11 S QV 55107 85124 | 3000ft MSL | CRS 135° DIRECT

#04: from GLDYN: 180° / 5nm | 5000ft | CRS 255° TO-TO

#05: from #04: 210° / 20nm | 4000ft (below 6000ft!) MSL

#06: Lat Long DM: N 35°27.838' W 114°39.928' | 2000ft MSL

#07: MGRS: 11 S QV 17107 16207 | 1500ft MSL

#08: from CUTAD: 090° / 15nm | 4500ft MSL

#09: KADDY | 4000ft MSL

#10: [GIVEN VIA COMMS]

#11: [GIVEN VIA COMMS]

#12: [GIVEN VIA COMMS]

Optional:

A10CDU04 - Alignments (In-Flight Alignment durchführen)

OTHER FLIGHTS

Callsign	Mission	Airframe	Freq	TCN	Grpld	Laser
Tiger 1	Training	4x F/A-18C	261.15	1/64		155X
AO		Task	VFR Route			
Edelweiss 1	Training	4x F/A-18C	264.15	1/64		171X
AO		Task				
Raptor 1	Training	4x F-16C	134.0	1/64		162X
AO		Task				
Edelweiss 1	Training	1x F-16C	264.15	1/64		171X
AO		Task				
Nazgul 6	Training	4x F-15E	262.45	1/64		156X
AO		Task	Training			
Edelweiss 1	Training	2x A-10C	131.15	4/67	30	161X
AO	S/E OF LAS VEGAS	Task	VFR			
Rattler 1	Training	4x AH-64D	133.5	1/64		125X
AO		Task				

RADIO CHANNELS

#	Freq	Name
1		Flight/Squadron specific
2	289.4	Nellis Clearance Delivery
3	275.8	Nellis Ground
4	327.0	Nellis Tower
5	385.4	Nellis Approach/Departure West
6	273.55	Nellis Approach/Departure East
7	317.525	Nellis Control -- Sally
8	254.4	Nellis Control-- Lee
9	305.6	SOF Bullseye
10	343.725	EMERGENCY SINGLE FRQ
11	270.1	Nellis ATIS
12	360.625	Creech AFB Tower
13	250.1	HAVE QUICK 13
14	251.1	HAVE QUICK 14
15	252.1	HAVE QUICK 15
16	377.8	Blackjack
17	265.0	KC-135 AR-641A
18	360.8	KC-135MPRS AR-635
19	319.8	KC-135MPRS AR-625
20	300.05	KC-135 AR-231V

RAMROD

0	1	2	3	4	5	6	7	8	9
P	L	E	A	S	U	R	I	N	G

KTC 1400 C

	0	1	2	3	4	5	6	7	8	9
A	TKOQ	WFI	SCG	RN	EH	BJP	MY	LD	VU	XA
B	DYSG	EBQ	FXI	LN	UR	APH	VK	CW	TM	JO
C	XAIR	DFV	TJY	GW	CE	QNK	OU	BS	MH	PL
D	ONUH	QLX	BTR	JS	MK	FGV	WD	IP	YC	AE
E	WOSM	NFX	YBQ	GD	RC	IKL	UJ	HP	AT	EV
F	XLUR	PFI	HSE	TQ	ON	YWJ	CV	MK	BG	AD
G	MPHO	SBJ	DRF	UA	IW	GCV	NQ	LY	ET	KX
H	VSPU	KBG	HNW	FA	QD	RCL	OI	XM	ET	YJ
I	EDCH	WYA	LTR	OP	KB	JFI	XU	NM	SV	QG
J	WCGB	VKU	AMJ	HY	FP	ROL	IQ	TX	SD	EN
K	VUCB	HSA	OMW	XD	YK	JGE	LT	IP	FN	RQ
L	PKMB	JDG	FAR	SU	TO	VXQ	NW	CY	EL	IH
M	DLUV	WPM	QTX	CH	RS	IBK	EA	OJ	YN	FG
N	PAHD	WCE	MIX	YL	JV	NTF	BS	GQ	UR	OK
O	SAXC	YRD	OLF	EQ	UK	MNH	VJ	BI	GW	TP
P	JAKL	TIF	QGY	OS	BC	UPE	DR	MN	VW	HX
Q	IJOH	TRC	XBF	KM	PW	VNG	EY	LQ	US	DA
R	YVST	XJF	EBG	OR	DC	LHK	IM	AQ	WP	UN
S	WEBP	XNK	GFA	YL	QC	RVH	ID	JT	SO	MU
T	ATIQ	HLD	ECP	OX	YJ	VUF	NM	RK	GB	SW
U	OLCW	BYD	QIT	SM	FU	EKV	RG	HP	JA	XN
V	GFKB	RVH	AMU	LY	CT	XSE	JP	ND	WI	OQ
W	RLXA	JNG	MPC	SI	OY	VEU	HQ	KD	WF	BT
X	WTCX	MRG	AOI	NE	QV	DPY	SH	FJ	UL	KB
Y	KNOT	SUM	HAQ	VG	EJ	DRI	CB	LP	XW	YF

NAVAIDS

Id	Name	Channel	Position	Elevation
BCE	Bryce Canyon	75	N3741.35 W11218.23	9040
BIH	Bishop	33	N3722.62 W11821.99	4114
BLD	Boulder	114	N3559.75 W11451.82	3650
BTY	Beatty	94	N3648.54 W11644.86	2925
CDC	Cedar City	120	N3747.24 W11304.90	5463
DAG	Daggett	79	N3457.75 W11634.69	1760
EED	Needles	99	N3445.96 W11428.43	650
GFS	Goffs	91	N3507.87 W11510.59	4019
GRL	Groom Lake	18	N3713.91 W11548.16	4475
HEC	Hector	74	N3447.83 W11627.78	1854
ILC	Wilson Creek	110	N3815.02 W11423.65	9318
INS	Creech AFB	87	N3635.20 W11540.12	3101
LAS	McCarran Intl	116	N3604.78 W11509.59	2142
LSV	Nellis	12	N3614.68 W11501.50	1864
MLF	Milford	58	N3821.62 W11300.79	4977
MMM	Mormon Mesa	90	N3646.16 W11416.65	2120
MVA	Mina	98	N3833.92 W11801.97	7860
OAL	Coale Dale	124	N3800.20 W11746.23	4800
PGS	Peach Springs	57	N3537.48 W11332.67	4754
TPH	Tonopah Muni	119	N3801.84 W11702.01	5330
TQQ	Silverbow	77	N3748.00 W11647.00	5500
UTI	St George	23	N3705.29 W11335.53	2871



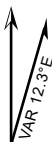
RWY 3L-21R
 PCN 46 R/C/W/T
 RWY 3R-21L
 PCN 51 R/C/W/T
 2017

PAR	RWY	CAT	MINIMA		ARP	ELEV	Scale 1:35'500	
	21L	A B D E	2057 - 0.8 200 (200-0.8/1.6)	GS 3°	36° 14.060° N 115° 01.058° W	1857 [ft] 566 [m]	0 300 600 900 1200 1500 [m]	
	3R	A B D E	2057 - 0.8 200 (200-0.8/1.6)	GS 3°			0 1000 2000 3000 4000 5000 [ft]	
SRA	21R	A C D E	2257 - 1.2 350 (350-1.2/1.6)					
	3L	A C D E	2257 - 1.2 350 (350-1.2/1.6)					

RWY	TORA	TODA	ASDA	LDA	PSN	THR	ALS
21L	10051 [ft] 3063 [m]	11051 [ft] 3368 [m]	11051 [ft] 3368 [m]	10051 [ft] 3063 [m]	36°14.043' N	115°01.018' W	⊕
3R	10120 [ft] 3084 [m]	11120 [ft] 3398 [m]	11120 [ft] 3398 [m]	10120 [ft] 3084 [m]	36°13.029' N	115°02.038' W	

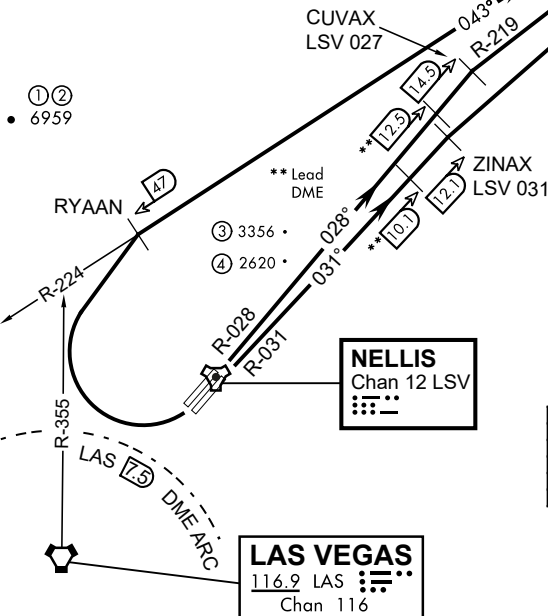
ATIS	NELLIS GROUND	NELLIS TOWER	NELLIS CONTROL	TACAN	ILS RWY 21L	NELLIS EAST	NELLIS WEST
270.100 MHz	275.800 121.800	327.000 132.55	317.525	LSV 12X	109.10 Mhz	384.400	385.000

ATIS
270.100
NELLIS GROUND
275.800
NELLIS TOWER
327.000
NELLIS CONTROL
317.525
NELLIS DEP/APP EAST
384.400
BLACKJACK
377.800



MORMON MESA
114.3 MMM
Chan 90
L-9 H-3

19,000



CAUTION: If unable to comply with restrictions advise ATC prior to departure.

- ① 12.24 NM from Rwy 21R
- ② 12.40 NM from Rwy 21L
- ③ 5.67 NM from Rwy 3L
- ④ 5.85 NM from Rwy 3R

Rwy	Knots	60	120	180	240	300	360
* 3L	V/V(fpm)	291	582	873	1164	1455	1746
* 3R	V/V(fpm)	258	516	774	1032	1290	1548
* 21L	V/V(fpm)	529	1058	1587	2116	2645	3174
* 21R	V/V(fpm)	536	1072	1680	2144	2680	3216
† 3L/R	V/V(fpm)	359	718	1077	1436	1795	2154

* Minimum † ATC Climb Rate
 ② To 3600
 ③ To 3200
 ④ To 17,000
 ⑤ To 13,500
 ⑥ To 19,000

DEPARTURE ROUTE DESCRIPTION

TAKE-OFF RWY 3L

- Fly runway heading to intercept the LSV TACAN R-027 then direct CUVAX, intercept the MMM VORTAC R-219 then direct MMM climbing to FL190 or as assigned, then via assigned route.

TAKE-OFF RWY 3R

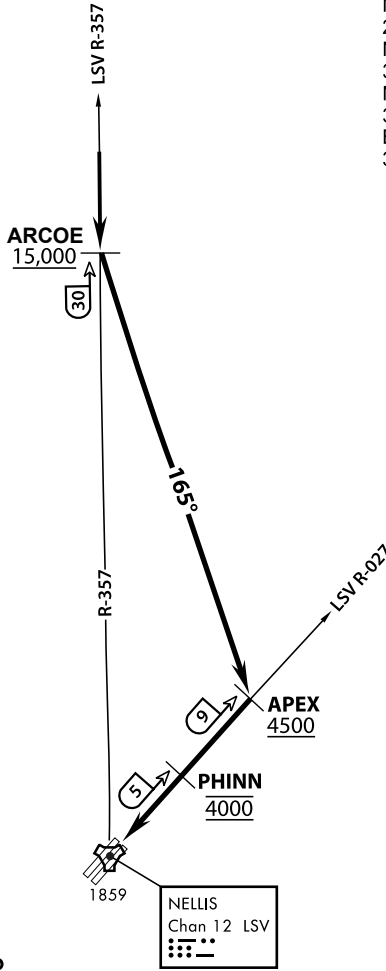
- Fly runway heading to intercept the LSV TACAN R-031 then direct ZINAX, intercept the MMM VORTAC R-217 then direct MMM, climbing to FL190 or as assigned, then via assigned route.

TAKE-OFF RWY 21L/R

- Turn right to intercept MMM VORTAC R-224 prior to MMM 47 DME, remain North of the LAS VORTAC 7.5 DME, remain East of LAS R-355, intercept MMM R-224 then direct MMM cross MMM at or above FL190, then via assigned route.

NOISE ABATMENT PROCEDURES: Fly acc. Nellis Noise Abatement instructions

ATIS
 270.100
 NELLIS GROUND
 275.800
 NELLIS TOWER
 327.000
 NELLIS CONTROL
 317.525
 BLACKJACK
 377.800



VMC ONLY

PILOT RESPONSIBLE FOR
TERRAIN AVOIDANCE

APPROACH ROUTE DESCRIPTION

OVERHEAD

Cross ARCOE at or above 15,000 MSL, then heading 165° to APEX.
 Cross APEX at or above 4,500 MSL, report to tower.
 Cross PHINN (LSV 027/5) at 4,000 MSL then descend to 3,500 MSL for Initial.

VFR STRAIGHT IN RWY 21

Cross APEX at 4,000 feet MSL. Descend to be at 3,000 feet MSL at PHINN (LSV 027/5).