

**MISSION DATA CARD**

OPORD		Callsign		Mission		Date/Time	
3115/2024		Nazgul 6		Transport		192100AUG24	
Task	Ferry Nellis					Freq	
AO						262.45	
Departure				Recovery			
				ARCOE			
#	Callsign	Pilot	IFF	TCN	LSR	NET	
-1	Nazgul 6-1	Tank	1161	1Y	1561		
-2	Nazgul 6-2	Razorback	1162	64Y	1562		
-3	Nazgul 6-3	Repsus	1163	64X	1563		

**LOADOUT**

A/A	2xA120C, 2xA9M			GUN	100% SAPHEI
A/G				CHF	120
POD	6xMX648, TGT, NAV			FLR	60
TKS	FT610			FUEL	100%

**TOLD**

	Takeoff	Target	Joker	Bingo	Land
FUEL	26553			4000	

**AIRBASES**

	Name	TCN	ATIS	GND	TWR	RWY	Elev	ILS
Arr	Nellis AFB	12X	270.1	275.8	327.0	21L	1850	109.1
Div	Creech AFB	87X	290.45	275.8	360.6			

**FLIGHTPLAN**

#	Name	Navaid/Coords/DME	ALT	TOT
1	ARCOE	LSV 357/30 (N36 44.260 W114 55.020)	15000	

**COMMS**

Radio	Usage
1	262.45
2	4,16

**SUPPORT****Tanker**

Callsign	TCN	Freq	ALT	TAS
ARCO 1	113Y	319.8	FL250	450
	Pos	AR-625: MVA 168/77 (N3717 W11802)		

**AWACS**

Callsign	Freq	ALT	Pos
MAGIC	377.8	FL270	N3749 W11417 - N3713 W11446

## OTHER FLIGHTS

Callsign	Mission	Airframe	Freq	TCN	Grpld	Laser
Tiger 1	Training	4x F/A-18C	261.15	1/64	1	155X
AO	NTTR	Task	Ferry Flight			
Raptor 1	Transport	4x F-16C	134.0	1/64		162X
AO	NTTR	Task	Ferry Flight NTTR			
Monster 1	Transport	4x A-10C	132.15	1/64	21	161X
AO		Task	Land at Nellis AFB			
T-Rex 2	Transport	4x A-10C	132.25	1/64	25	165X
AO		Task	Land at Nellis AFB			
Edelweiss	Training	1x F-15E	264.05	1/64		170X
AO		Task				

**RADIO CHANNELS**

#	Freq	Name
1		Flight/Squadron specific
2	289.4	Nellis Clearance Delivery
3	275.8	Nellis Ground
4	327.0	Nellis Tower
5	385.4	Nellis Approach/Departure West
6	273.55	Nellis Approach/Departure East
7	317.525	Nellis Control -- Sally
8	254.4	Nellis Control-- Lee
9	305.6	SOF Bullseye
10	343.725	EMERGENCY SINGLE FRQ
11	270.1	Nellis ATIS
12	360.625	Creech AFB Tower
13	250.1	HAVE QUICK 13
14	251.1	HAVE QUICK 14
15	252.1	HAVE QUICK 15
16	377.8	Blackjack
17	265.0	KC-135 AR-641A
18	360.8	KC-135MPRS AR-635
19	319.8	KC-135MPRS AR-625
20	300.05	KC-135 AR-231V

**RAMROD**

0	1	2	3	4	5	6	7	8	9
H	U	M	A	N	I	Z	E	R	S

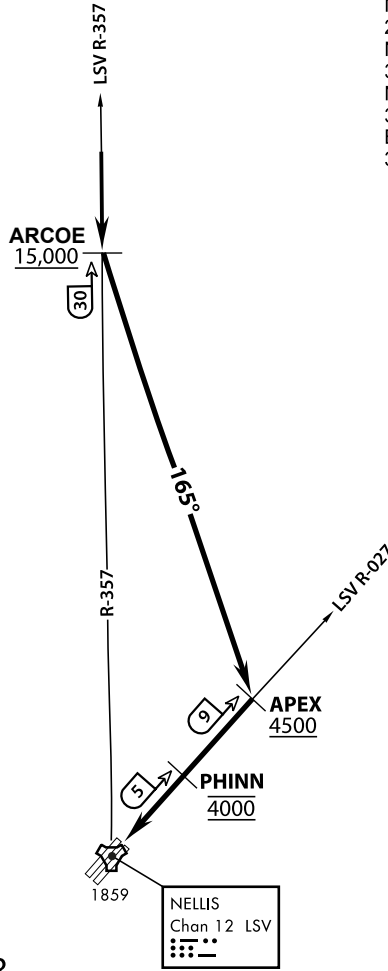
**KTC 1400 C**

	0	1	2	3	4	5	6	7	8	9
A	PAOH	WTS	KGB	CE	QN	MVR	YL	XU	IF	JD
B	RCEA	FKD	WYX	NH	IL	UQT	SG	JP	MV	OB
C	DTBL	EXR	HCS	OY	QK	JPM	NF	GU	WI	VA
D	HUVG	BET	CRM	NJ	DX	YSP	OF	IK	LW	QA
E	MASI	DUK	RJH	YB	VN	TWQ	GF	PE	CX	OL
F	IWXY	DHT	BNM	EA	GP	KFV	SU	LC	QR	OJ
G	ONGS	MRY	CQB	KW	HE	DVJ	PA	LU	FX	TI
H	BKMA	XEO	FNL	HY	SG	UWT	IV	CQ	JD	RP
I	PFBU	IXW	NOC	LR	SM	EDY	HJ	QG	VA	KT
J	WPFI	RSN	YHO	CX	TA	QMJ	UV	LK	GB	DE
K	NFJO	DBM	SQV	TG	UC	XPW	KI	HL	EA	RY
L	XUJN	OQW	KGB	HS	ME	VFR	IC	AD	LT	PY
M	UGRJ	CYO	ESQ	VN	KI	XHF	AT	MB	LW	DP
N	IYLV	TMX	FUB	DR	OW	QJN	GP	KA	EC	HS
O	JUVB	GIL	ERW	YD	FQ	NTH	MC	XS	KA	OP
P	VYGW	MKI	DJO	PN	FT	AES	XH	RC	BQ	UL
Q	PVGM	EHC	XIF	WJ	AU	QBN	OS	KD	LR	TY
R	XYPU	BOL	INJ	RK	VT	HCM	FG	QS	AE	WD
S	HQDO	GNF	WRE	YJ	PU	CXV	AM	KB	IT	LS
T	IQAE	HBT	JWN	FR	KC	UVP	YM	XD	GL	SO
U	HIMW	UFL	YVB	QS	GJ	OPD	AN	CX	RK	TE
V	RIJH	DBT	OPN	UF	GE	YAX	SK	VL	QM	WC
W	XCJB	KNM	VYF	IW	PE	THD	AQ	OL	UG	RS
X	ALHO	PXQ	IUV	SF	WG	RYC	MJ	DB	EN	KT
Y	UMJC	THD	PIN	SF	OL	AKV	WQ	EY	XG	RB

**NAVAIDS**

<b>Id</b>	<b>Name</b>	<b>Channel</b>	<b>Position</b>	<b>Elevation</b>
BCE	Bryce Canyon	75	N3741.35 W11218.23	9040
BIH	Bishop	33	N3722.62 W11821.99	4114
BLD	Boulder	114	N3559.75 W11451.82	3650
BTY	Beatty	94	N3648.54 W11644.86	2925
CDC	Cedar City	120	N3747.24 W11304.90	5463
DAG	Daggett	79	N3457.75 W11634.69	1760
EED	Needles	99	N3445.96 W11428.43	650
GFS	Goffs	91	N3507.87 W11510.59	4019
GRL	Groom Lake	18	N3713.91 W11548.16	4475
HEC	Hector	74	N3447.83 W11627.78	1854
ILC	Wilson Creek	110	N3815.02 W11423.65	9318
INS	Creech AFB	87	N3635.20 W11540.12	3101
LAS	McCarran Intl	116	N3604.78 W11509.59	2142
LSV	Nellis	12	N3614.68 W11501.50	1864
MLF	Milford	58	N3821.62 W11300.79	4977
MMM	Mormon Mesa	90	N3646.16 W11416.65	2120
MVA	Mina	98	N3833.92 W11801.97	7860
OAL	Coale Dale	124	N3800.20 W11746.23	4800
PGS	Peach Springs	57	N3537.48 W11332.67	4754
TPH	Tonopah Muni	119	N3801.84 W11702.01	5330
TQQ	Silverbow	77	N3748.00 W11647.00	5500
UTI	St George	23	N3705.29 W11335.53	2871

ATIS  
 270.100  
 NELLIS GROUND  
 275.800  
 NELLIS TOWER  
 327.000  
 NELLIS CONTROL  
 317.525  
 BLACKJACK  
 377.800



# VMC ONLY

PILOT RESPONSIBLE FOR  
TERRAIN AVOIDANCE

## APPROACH ROUTE DESCRIPTION

### OVERHEAD

Cross ARCOE at or above 15,000 MSL, then heading 165° to APEX.  
 Cross APEX at or above 4,500 MSL, report to tower.  
 Cross PHINN (LSV 027/5) at 4,000 MSL then descend to 3,500 MSL for Initial.

### VFR STRAIGHT IN RWY 21

Cross APEX at 4,000 feet MSL. Descend to be at 3,000 feet MSL at PHINN (LSV 027/5).





RWY 3L-21R  
 PCN 46 R/C/W/T  
 RWY 3R-21L  
 PCN 51 R/C/W/T  
 2017

PAR	RWY	CAT	MINIMA		ARP	ELEV	Scale 1:35'500	
	21L	A B D E	2057 - 0.8 200	(200-0.8/1.6) GS 3°	36° 14.060° N 115° 01.058° W	1857 [ft] 566 [m]	0	300
	3R	A B D E	2057 - 0.8 200	(200-0.8/1.6) GS 3°			0	1000
	21R	A C D E	2257 - 1.2 350	(350-1.2/1.6)			0	2000
	3L	A C D E	2257 - 1.2 350	(350-1.2/1.6)			0	3000
							0	4000
							0	5000

RWY	TORA	TODA	ASDA	LDA	PSN	THR	ALS
21L	10051 [ft] 3063 [m]	11051 [ft] 3368 [m]	11051 [ft] 3368 [m]	10051 [ft] 3063 [m]	36°14.043' N	115°01.018' W	⊕
3R	10120 [ft] 3084 [m]	11120 [ft] 3398 [m]	11120 [ft] 3398 [m]	10120 [ft] 3084 [m]	36°13.029' N	115°02.038' W	

ATIS	NELLIS GROUND	NELLIS TOWER	NELLIS CONTROL	TACAN	ILS RWY 21L	NELLIS EAST	NELLIS WEST
270.100 MHz	275.800   121.800	327.000   132.55	317.525	LSV 12X	109.10 Mhz	384.400	385.000



INDIAN SPRINGS, NEVADA

TACAN INS Chan 87	APCH CRS 065°	Rwy ldg TDZE 3133	9002 3113
		Arpt Elev 3113	

INDIAN SPRINGS AF AUX (KINS)



\* MISSED APPROACH: Straight ahead to INS TACAN, intercept INS R-outbound, cross 17 DME at or above 9500, then direkt KSV TACAN

114

NELLIS CON

CREECH AFB TOWER  
118.30 60.60

GND CON

NOT FOR CIVIL USE

FOR USE UNDER BASIC VFR WEATHER MINIMUMS ONLY

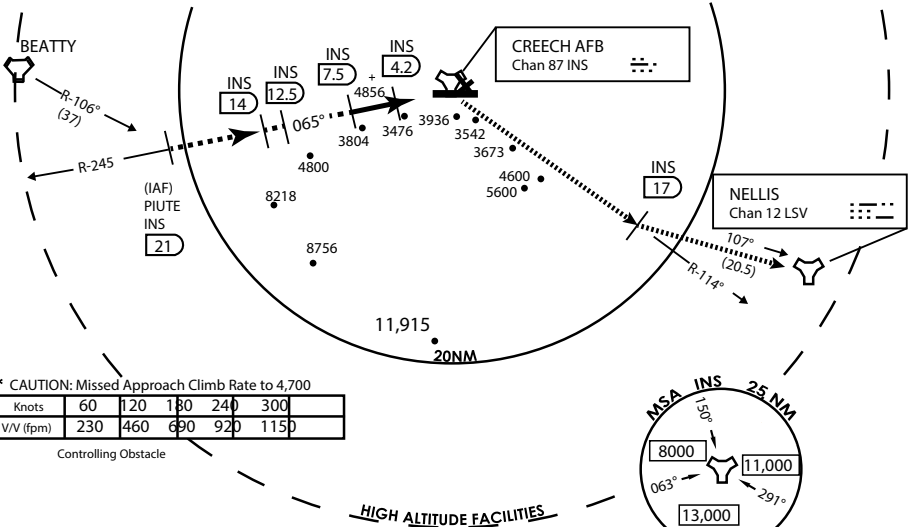
PILOT IS RESPONSIBLE FOR TERRAIN/OBSTACLE AVOIDANCE AND APPROPRIATE VFR CLOUD CLEARANCE FOR ALL

CAUTION: Descent gradients are greater than allowed under standard TERPS criteria and inbound course does not meet straight-in criteria

CAUTION: Final approach course crosses Runway centerline at MIDFIELD. Maneuvering left of course required prior to landing. Do not Maneuver farther north than the INS R-258

Modified by viaBog 66 for use with DCS  
NOT FOR REAL LIFE NAVIGATION

Modified by viaBog 66 for use with DCS  
NOT FOR REAL LIFE NAVIGATION

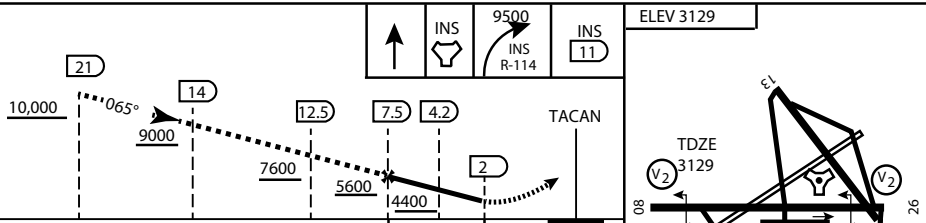


\* CAUTION: Missed Approach Climb Rate to 4,700

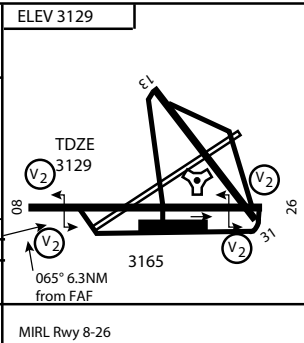
Knots	60	120	180	240	300
V/V (fpm)	230	460	690	920	1150

Controlling Obstacle

EMERG SAFE ALT 100 NM 14,000



CATEGORY	A	B	C	D	E
S-8	3760-1 1/2	627 (700-1 1/2)	3760-1 3/4 627 (700-1 3/4)	3760-2 627 (700-2)	3760-2 1/4 627 (700-2 1/4)
CIRCLING	NOT AUTHORIZED				



CITY OF INDIAN, NEVADA

INDIAN SPRINGS AF AUX (KINS)

(FOR DAY VFR USE ONLY)



# AIRPORT DIAGRAM

476 VFG

CREECH AFB (KINS)  
INDIAN SPRINGS, NEVADA

ATIS  
 122.5  
 CREECH TOWER  
 118.4 360.7 38.65  
 GND CON  
 118.3 275.8  
 CLNC DEL

FIELD  
 ELEV  
 3127

HOT  
 CARGO  
 PAD

VAR 12.5° E

WEST EOR

CONTROL  
 TOWER  
 BASE  
 OPS

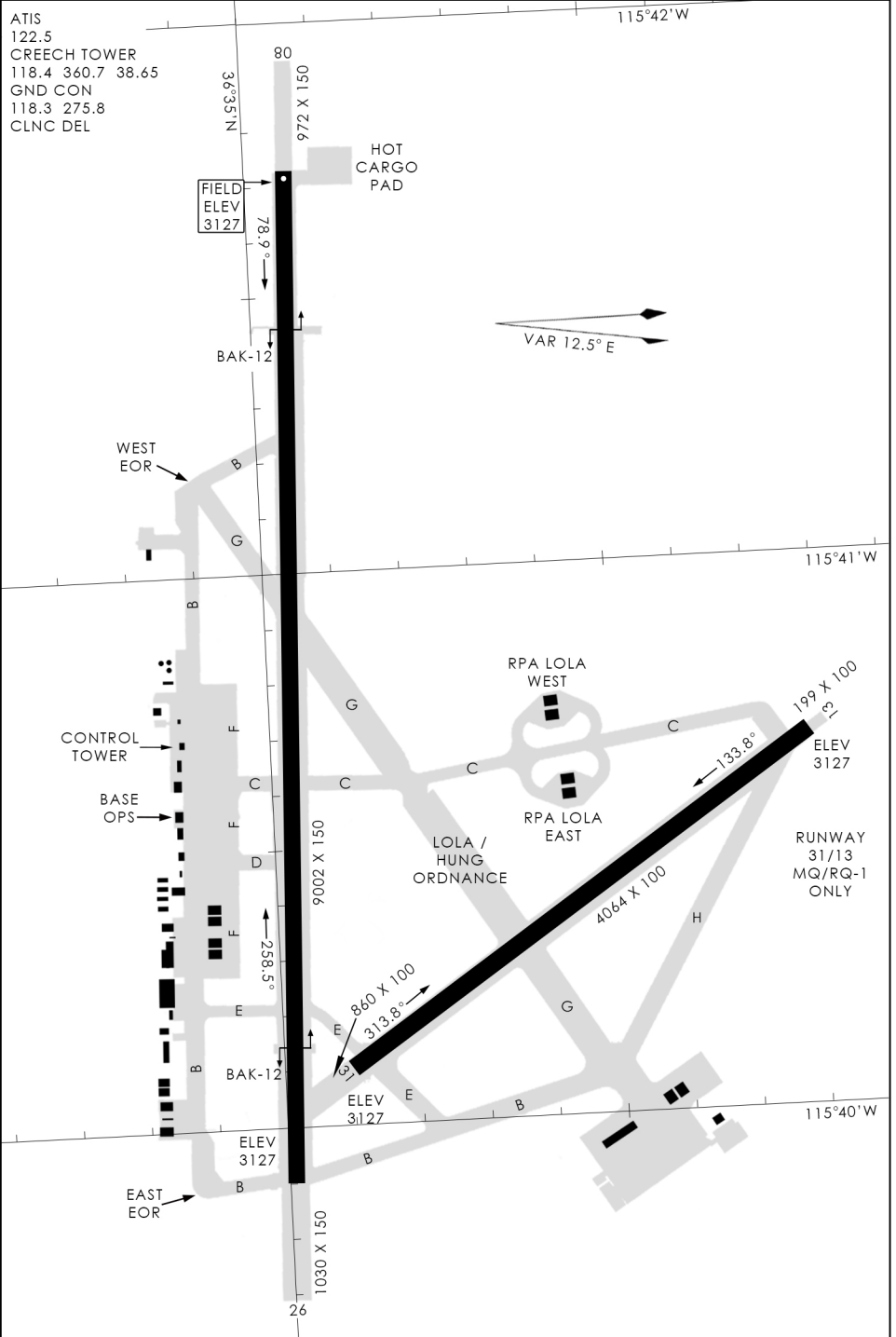
RPA LOLA WEST

RPA LOLA EAST

LOLA / HUNG ORDNANCE

RUNWAY  
 31/13  
 MQ/RQ-1  
 ONLY

EAST EOR



476 VFG JAN 2019

476 VFG JAN 2019

# AIRPORT DIAGRAM

INDIAN SPRINGS, NEVADA  
CREECH AFB (KINS)