

MISSION DATA CARD

OPORD		Callsign		Mission		Date/Time	
3110/2024		Nazgul 6		Transport		192000AUG24	
Task	Ferry Flight GUAM NTTR					Freq	
AO						262.45	
Departure				Recovery			
RWY28 VFR							
#	Callsign	Pilot	IFF	TCN	LSR	NET	
-1	Nazgul 6-1	Tank/Uta	1161	1Y	1561		
-2	Nazgul 6-2	Razorback	1162	64Y	1562		
-3	Nazgul 6-3	Repsus	1163	64X	1563		

LOADOUT

A/A	2xA120C, 2xA9M			GUN	100% SAPHEI
A/G				CHF	120
POD	4xMX648, TGT, NAV			FLR	60
TKS	3xFT610			FUEL	100%

TOLD

	Takeoff	Target	Joker	Bingo	Land
FUEL	34483			4000	

AIRBASES

	Name	TCN	ATIS	GND	TWR	RWY	Elev	ILS
Dep	Akrotiri AFB	107X	288.2	240.1	339.85	28	62	109.7

FLIGHTPLAN

#	Name	Navaid/Coords/DME	ALT	TOT
1	ECHO	N34 42.600 E033 10	5000	
2	VADUS	N35 18.565 E032 03.767	30000	
3	DASNI	N35 36.939 E030 50.939	30000	

COMMS

Radio	Usage
1	262.45
2	4,16

NOTES

#Placeholder#

Ferry Flight -Akrotiri AFB->Nellis AFB via Guam-

Arrival Nellis via Lincoln County

First Waypoint ARCOE(N36 44.260 W114 55.020)

Runway for Arrival 21R - weapons on Board -

SUPPORT**Tanker**

Callsign	TCN	Freq	ALT	TAS
ARCO 1	22Y	319.8	FL222	400
	Pos	ARCO1: (N3701 E03457)		

AWACS

Callsign	Freq	ALT	Pos
OVERLORD2	377.8	FL320	N3713 E03643 - N3714 E03749

OTHER FLIGHTS

Callsign	Mission	Airframe	Freq	TCN	Grpld	Laser
Tiger 1	Training	4x F/A-18C	261.15	1/64		155X
AO		Task				
Panther 1	Training	4x F/A-18C	261.25	1/64		156X
AO		Task				

RADIO CHANNELS

#	Freq	Name
1		Flight/Squadron specific
2	288.2	Akrotiri ATIS
3	240.1	Akrotiri Ground
4	339.85	Aktrotiri Tower
5	335.05	Akrotiri Approach
6	360.1	Incirlik Tower
7	371.35	Incirlik Ground
8	377.475	Incirlik ATIS
9		No Preset
10	127.3	Paphos ATIS
11	353.8	Paphos Tower
12	304.0	CVN-73 George Washington
13	302.0	LHA-1 Tarawa
14	259.0	CV-59 Forrestal
15		No Preset
16	377.8	Overlord
17	265.0	KC-135 Texaco-1 medium/slow
18	319.8	KC-135 Arco-1
19	360.8	KC-135MPRS Arco-2
20	256.0	S-3B Recovery Tanker

RAMROD

0	1	2	3	4	5	6	7	8	9
H	U	M	A	N	I	Z	E	R	S

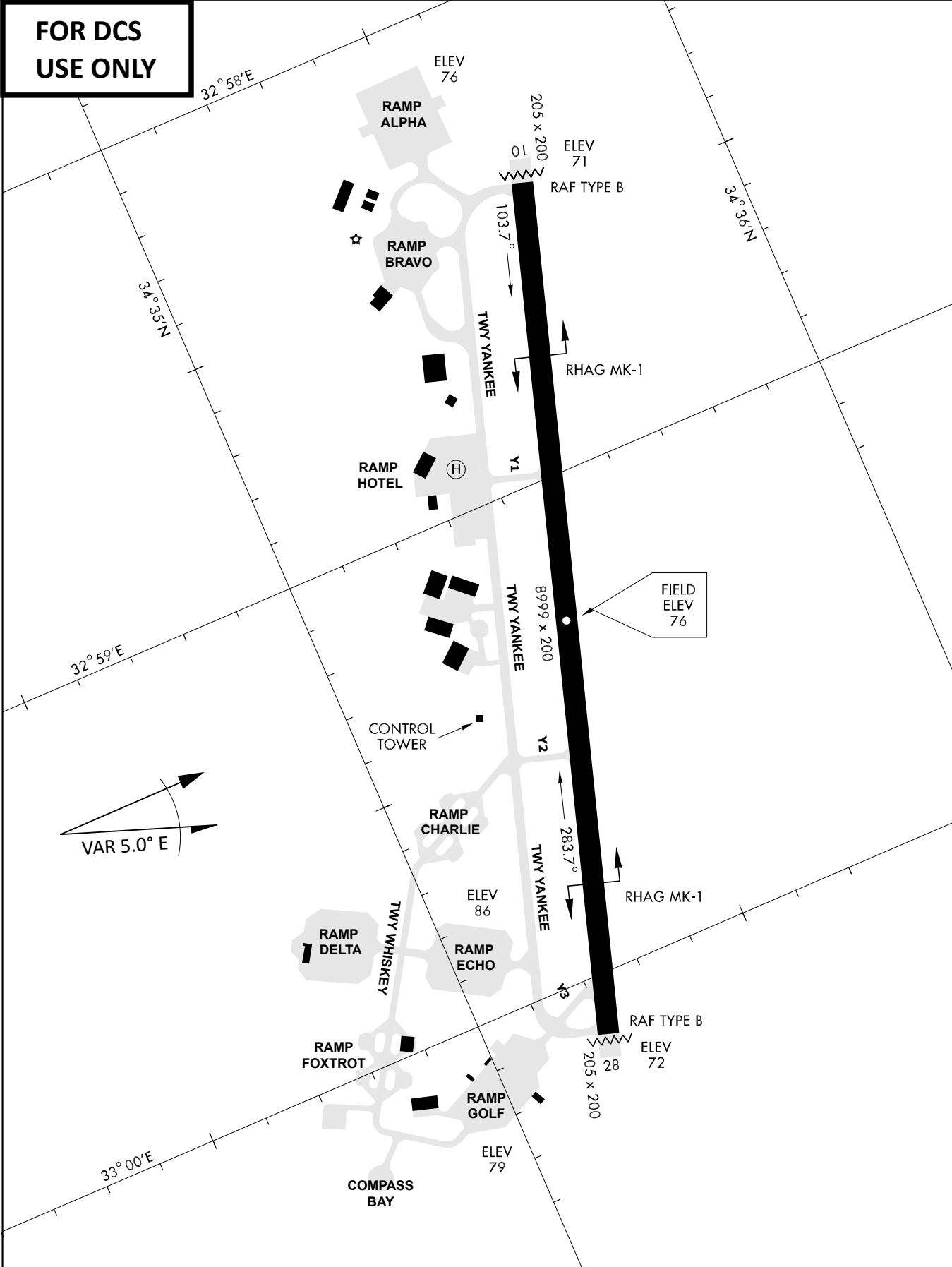
KTC 1400 C

	0	1	2	3	4	5	6	7	8	9
A	PAOH	WTS	KGB	CE	QN	MVR	YL	XU	IF	JD
B	RCEA	FKD	WYX	NH	IL	UQT	SG	JP	MV	OB
C	DTBL	EXR	HCS	OY	QK	JPM	NF	GU	WI	VA
D	HUVG	BET	CRM	NJ	DX	YSP	OF	IK	LW	QA
E	MASI	DUK	RJH	YB	VN	TWQ	GF	PE	CX	OL
F	IWXY	DHT	BNM	EA	GP	KFV	SU	LC	QR	OJ
G	ONGS	MRY	CQB	KW	HE	DVJ	PA	LU	FX	TI
H	BKMA	XEO	FNL	HY	SG	UWT	IV	CQ	JD	RP
I	PFBU	IXW	NOC	LR	SM	EDY	HJ	QG	VA	KT
J	WPFI	RSN	YHO	CX	TA	QMJ	UV	LK	GB	DE
K	NFJO	DBM	SQV	TG	UC	XPW	KI	HL	EA	RY
L	XUJN	OQW	KGB	HS	ME	VFR	IC	AD	LT	PY
M	UGRJ	CYO	ESQ	VN	KI	XHF	AT	MB	LW	DP
N	IYLV	TMX	FUB	DR	OW	QJN	GP	KA	EC	HS
O	JUVB	GIL	ERW	YD	FQ	NTH	MC	XS	KA	OP
P	VYGW	MKI	DJO	PN	FT	AES	XH	RC	BQ	UL
Q	PVGM	EHC	XIF	WJ	AU	QBN	OS	KD	LR	TY
R	XYPU	BOL	INJ	RK	VT	HCM	FG	QS	AE	WD
S	HQDO	GNF	WRE	YJ	PU	CXV	AM	KB	IT	LS
T	IQAE	HBT	JWN	FR	KC	UVP	YM	XD	GL	SO
U	HIMW	UFL	YVB	QS	GJ	OPD	AN	CX	RK	TE
V	RIJH	DBT	OPN	UF	GE	YAX	SK	VL	QM	WC
W	XCJB	KNM	VYF	IW	PE	THD	AQ	OL	UG	RS
X	ALHO	PXQ	IUV	SF	WG	RYC	MJ	DB	EN	KT
Y	UMJC	THD	PIN	SF	OL	AKV	WQ	EY	XG	RB

NAVAIDS

Id	Name	Channel	Position	Elevation
DAN	Incirlik	21	N37 00.950 E035 26.883	243
AKR	Akrotiri	107	N34 34.765 E032 57.769	147
PHA	Paphos	79	N34 42.997 E032 28.963	35
RMD	Ramat David	84	N32 39.892 E035 11.265	136
OS66	Kuweires Military Aviation Institute	36	N36 11.362 E037 34.226	1200

**FOR DCS
 USE ONLY**

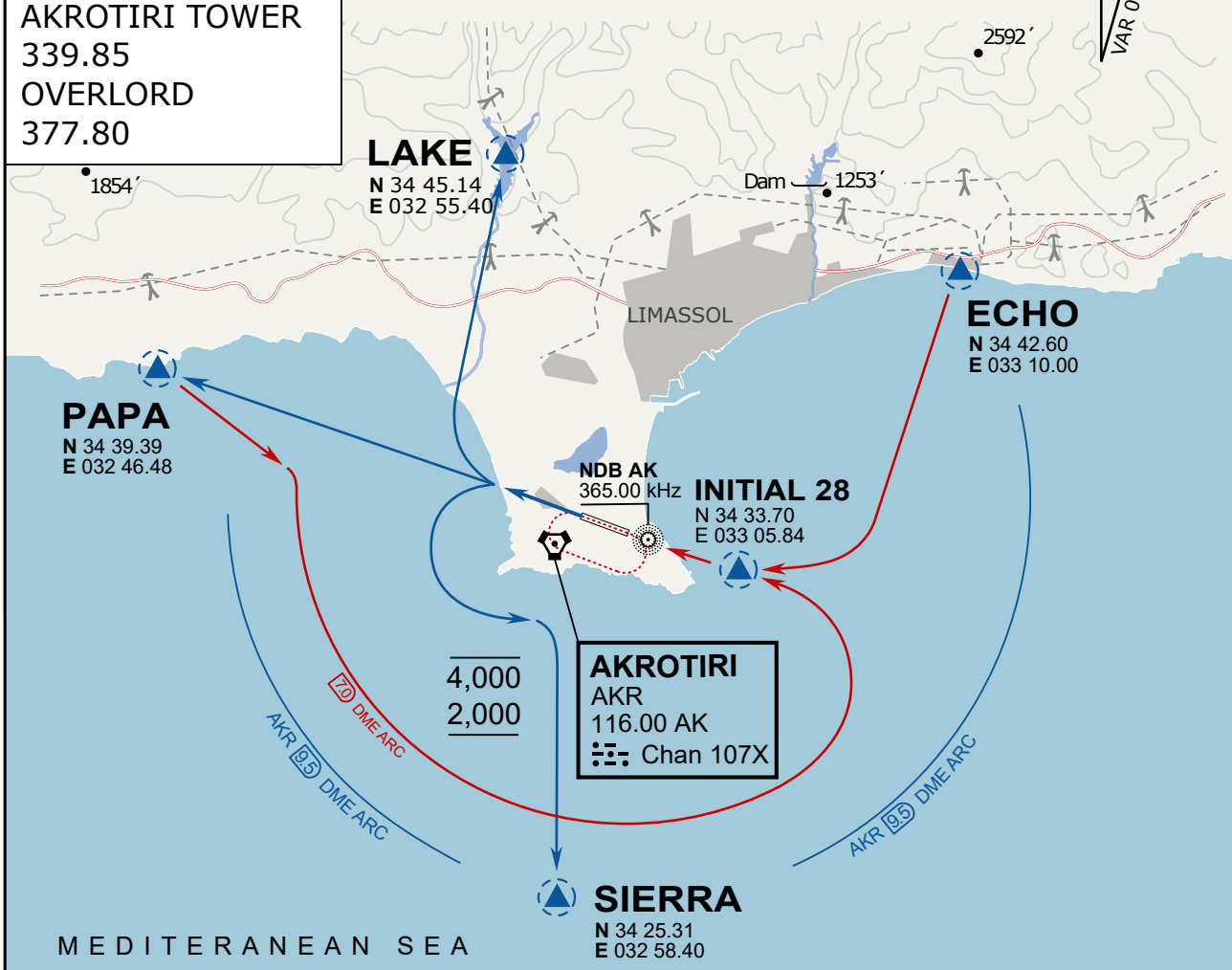


ATIS	AKROTIRI GND	AKROTIRI TWR	OVERLORD CONTROL	TACAN	FIELD ELEVATION
288.20 MHz	240.10 122.10	339.85 130.075	377.8	AKR 107X	75 [ft] 23 [m]

ATIS
 288.20
 AKROTIRI GROUND
 240.10
 AKROTIRI TOWER
 339.85
 OVERLORD
 377.80

NOT FOR CIVIL USE

CAUTION: If unable to comply with restrictions advise ATC prior to departure.



ARR / DEP ROUTE DESCRIPTION

STRAIGHT-IN RWY28

Pass ENTRY at 5.000' MSL or below, pass INITIAL at 1.500' MSL or below.

OVERHEAD BREAK RWY28

Pass ENTRY at 5.000' MSL or below, pass INITIAL at 2.000' MSL, break to the south.

DEPARTURE GENERAL

Pass Departure end of runway at 1.000' or below.

DEP RWY28 PAPA: Fly straight ahead to exit.

DEP RWY28 LAKE: Fly straight ahead until coast, than right turn direct exit.

DEP RWY28 SIERRA: Fly straight ahead until coastline, then climbing left turn, intercept AKR R-180 to exit.

DEP ECHO: no exit.