

**MISSION DATA CARD**

OPORD		Callsign		Mission		Date/Time	
3107/2024		Nazgul 6		Strike		152000AUG24	
Task	Strike Exercise					Freq	
AO	ETTR					262.45	
Departure				Recovery			
VFR				VFR			
#	Callsign	Pilot	IFF	TCN	LSR	NET	
-1	Nazgul 6-1	Repsus/Lempo	1161	1Y	1561		
-2	Nazgul 6-2	Tank/TaB	1162	64Y	1562		
-3	Nazgul 6-3	Striver	1163	64X	1563		
-4	Nazgul 6-4	Razorback	1164	1X	1564		

**LOADOUT**

A/A	2xA120C, 2xA9M	GUN	100% SAPHEI
A/G	4xG311B, 4xG12	CHF	120
POD	TGT, NAV	FLR	60
TKS		FUEL	100%

**TOLD**

	Takeoff	Target	Joker	Bingo	Land
FUEL	22588			4000	

**AIRBASES**

	Name	TCN	ATIS	GND	TWR	RWY	Elev	ILS
Dep	Incirlik AFB	21X	377.47 5	371.35	360.1	5	190	
Arr	Incirlik AFB	21X	377.47 5	371.35	360.1	5	190	
Div	Incirlik AFB	21X	377.47 5	371.35	360.1	5	190	

**FLIGHTPLAN**

#	Name	Navaid/Coords/DME	ALT	TOT
1	INITIAL 23	N37 03.956 E035 31.866	1500	
2	FALCON	N37 05.067 E035 40.888	2000	
3	IP Beer	N36 01.260 E036 15.813	20000	
4	IP Whiskey	N36 01.385 E035 53.750	20000	
5	AOR 1	N36 01.186 E036 00.746		
6	AOR 2	N36 01.334 E036 14.456		
7	AOR 3	N35 45.060 E036 01.110		
8	AOR 4	N35 45.319 E036 14.866		
9	EAGLE	N36 52.938 E035 21.611	2500	
10	INITIAL 05	N36 56.654 E035 19.839	2000	

**COMMS**

Radio	Usage
1	01
2	04 / 16 / 04

## NOTES

===SEQUENCE===

1730

ATIS : RW05, QNH 29.82

T/O Incirlik Dep via INIT23 and FALCON

MIL PWR CLMB to A35

Holding IP Whiskey - HOT 360 - 16nm - A20 - M.8 - RH - split EL

Observe AOR for targets - divert eastern holding if no contact possible:

Holding IP Beer - HOT 360 - 16nm - A20 - M.8 - RH - split EL

strike targets in EL shooter-shooter (JDAM strike)

reattack t.o.o. (LGB) - BDA

RTB AKR Rec via VFR EAGLE

===RADIO===

NAZGUL 6 - CH01

AKR TWR - CH04

CVN72 - CH07 - TCN72X

OVERLORD1 - CH16

ARCO1 - CH17

===REMARKS===

- aggressive maneuvering
- harddeck a19 for observation
- safe escapes (manpad thread)

**SUPPORT****Tanker**

Callsign	TCN	Freq	ALT	TAS
ARCO 1	22Y	319.8	FL222	400
	Pos	ARCO1: (N3701 E03457)		

**AWACS**

Callsign	Freq	ALT	Pos
OVERLORD2	377.8	FL320	N3713 E03643 - N3714 E03749

**RADIO CHANNELS**

#	Freq	Name
1		Flight/Squadron specific
2	288.2	Akrotiri ATIS
3	240.1	Akrotiri Ground
4	339.85	Aktrotiri Tower
5	335.05	Akrotiri Approach
6	360.1	Incirlik Tower
7	371.35	Incirlik Ground
8	377.475	Incirlik ATIS
9		No Preset
10	127.3	Paphos ATIS
11	353.8	Paphos Tower
12	304.0	CVN-73 George Washington
13	302.0	LHA-1 Tarawa
14	259.0	CV-59 Forrestal
15		No Preset
16	377.8	Overlord
17	265.0	KC-135 Texaco-1 medium/slow
18	319.8	KC-135 Arco-1
19	360.8	KC-135MPRS Arco-2
20	256.0	S-3B Recovery Tanker

**RAMROD**

0	1	2	3	4	5	6	7	8	9
D	I	S	H	A	R	M	O	N	Y

**KTC 1400 C**

	0	1	2	3	4	5	6	7	8	9
A	BRVH	QSA	LIK	YE	UC	DJP	XM	OW	TN	FG
B	EWNO	GKV	AIR	BF	DQ	JLX	HY	UM	TC	SP
C	ACNX	JWE	DMG	PH	VU	TOK	LR	QY	SF	BI
D	YRWJ	UQE	PIH	LV	FM	NDG	TO	XC	KS	AB
E	MFQC	YID	NEP	BX	VH	TSJ	UK	RA	GL	WO
F	SHVA	QEJ	BPG	OL	KX	CYU	FT	NM	WD	IR
G	NOJM	VQY	EGD	RP	KA	CFB	IW	HL	ST	XU
H	RBVC	AKW	HOT	QY	IG	MFN	US	JX	LD	EP
I	BEMX	LDV	OQW	UT	HY	GPC	NF	JI	KA	SR
J	SXOY	LNG	WUT	RK	CM	QIF	AD	EP	VB	JH
K	EYKT	PMV	CSB	AW	GH	QUL	RN	IO	DF	XJ
L	YPMC	NDX	GRQ	OE	TU	WHB	JA	VI	FL	KS
M	ONVY	SBC	JMW	EI	PL	HUX	QR	KA	TG	FD
N	LMVS	HJX	ABU	RQ	CY	GKD	FN	TP	OW	IE
O	WVQM	EGO	SHP	XA	YU	JKN	RF	IT	LC	DB
P	NARL	CSG	VXH	DY	TE	PWK	IJ	OQ	FM	BU
Q	KBSL	WCF	DTG	RO	QE	VIP	AN	JX	HU	YM
R	JLYT	EKS	XFI	UH	CA	DWQ	BM	OV	NP	RG
S	LMTH	FVC	JSW	UB	DK	PNO	EX	YR	GQ	AI
T	QNXA	FKI	DLJ	EY	GV	CRW	TH	BM	UO	SP
U	HXJI	OGE	MWQ	UY	CN	VRF	PK	AL	BS	DT
V	TGVL	HNA	PXC	UW	BY	MIJ	QR	OD	EK	SF
W	OGHP	TAC	MIF	KS	XE	YVR	LU	DQ	JW	NB
X	FRAN	UPB	OVM	QI	WS	ETK	HL	YC	GX	JD
Y	KXUC	YTW	EJD	VH	QO	RNF	LG	MA	BI	PS

**NAVAIDS**

<b>Id</b>	<b>Name</b>	<b>Channel</b>	<b>Position</b>	<b>Elevation</b>
DAN	Incirlik	21	N37 00.950 E035 26.883	243
AKR	Akrotiri	107	N34 34.765 E032 57.769	147
PHA	Paphos	79	N34 42.997 E032 28.963	35
RMD	Ramat David	84	N32 39.892 E035 11.265	136
OS66	Kuweires Military Aviation Institute	36	N36 11.362 E037 34.226	1200





ATIS  
377.475 (#8)

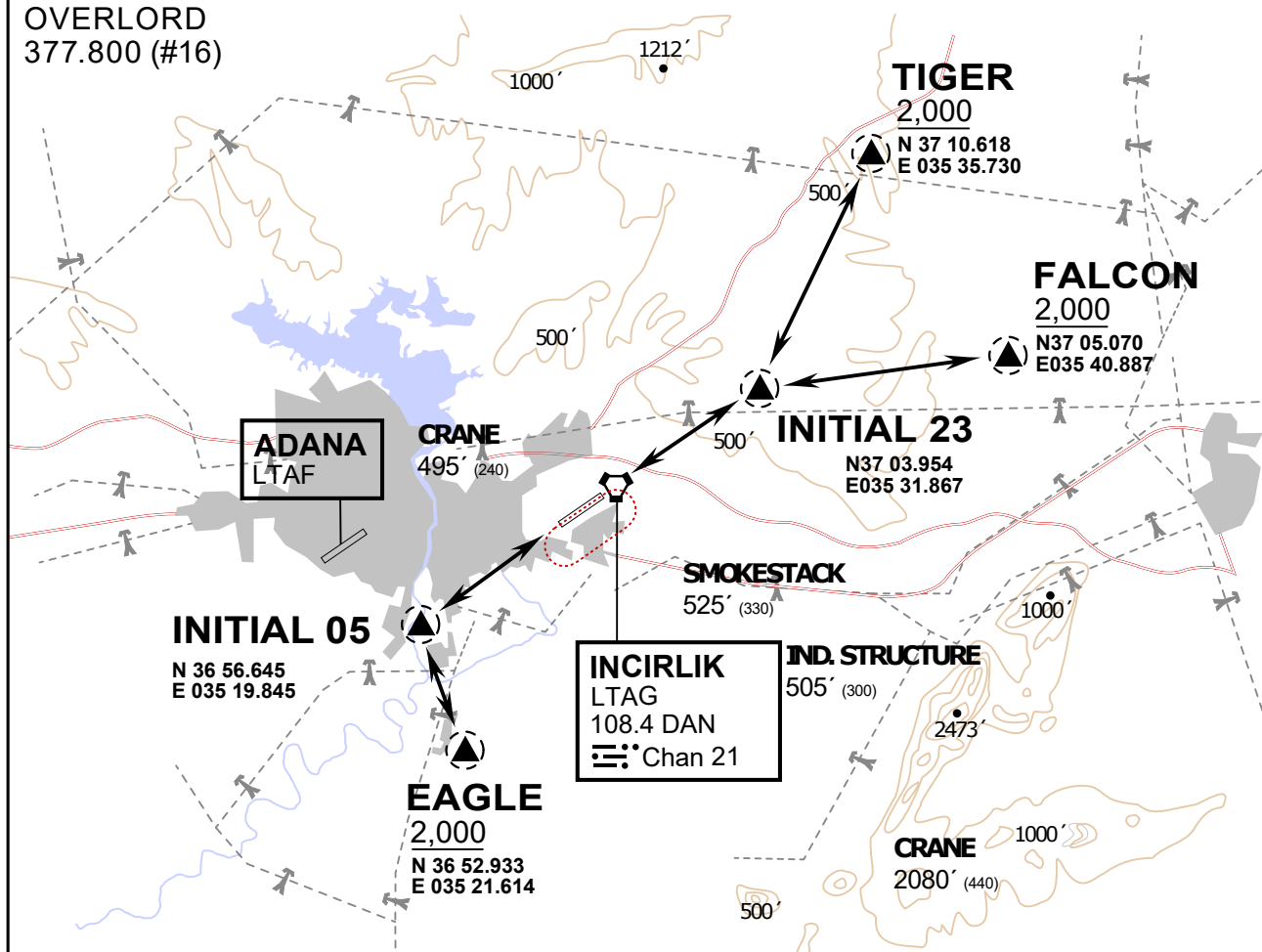
INCIRLIK GROUND  
371.3500 (#7)

INCIRLIK TOWER  
360.100 (#6)

OVERLORD  
377.800 (#16)

NOT FOR CIVIL USE

CAUTION: If unable to comply  
with restrictions advise ATC  
prior to departure.



vJaBoG32 ETTR NAV CHART



### ARR / DEP ROUTE DESCRIPTION

#### STRAIGHT-IN RWY 05 / 23

Pass entry EAGLE / TIGER / FALCON at 2000' and INITIAL at 1500'

#### OVERHEAD BREAK RWY 05 / 23

Pass entry EAGLE / TIGER / FALCON at 2500',  
pass INITIAL at 2000' break to the south at 2000' pattern altitude.

#### HELICOPTER ROUTES

Pass entry EAGLE / TIGER / FALCON at 1000' or below, pass INITIAL at 1000' break to the south at 1000' pattern altitude.

#### DEPARTURE ALL DIRECTIONS

pass DER below 1500ft



ATIS  
377.475 (#8)

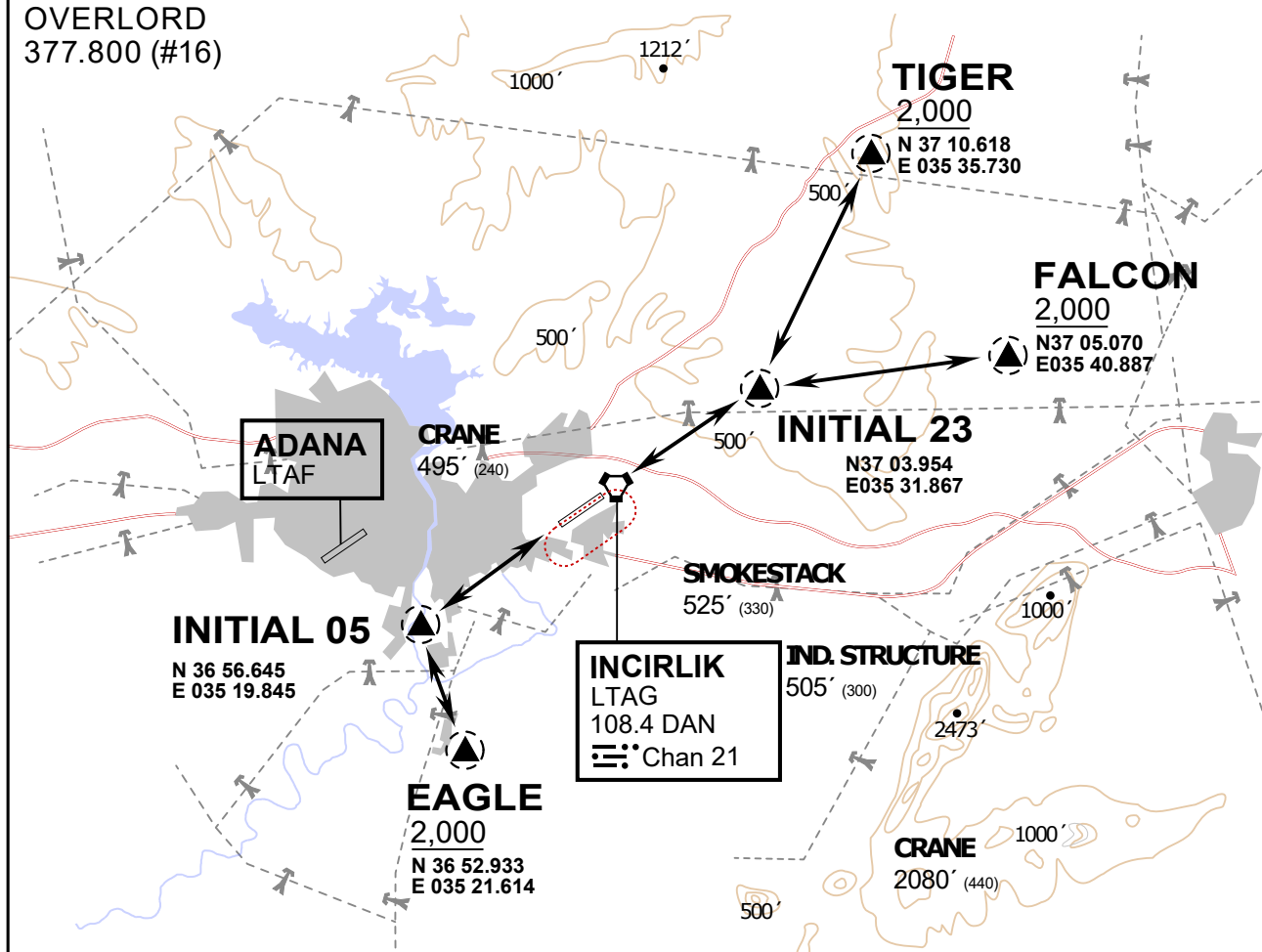
INCIRLIK GROUND  
371.3500 (#7)

INCIRLIK TOWER  
360.100 (#6)

OVERLORD  
377.800 (#16)

NOT FOR CIVIL USE

CAUTION: If unable to comply  
with restrictions advise ATC  
prior to departure.



### ARR / DEP ROUTE DESCRIPTION

#### STRAIGHT-IN RWY 05 / 23

Pass entry EAGLE / TIGER / FALCON at 2000' and INITIAL at 1500'

#### OVERHEAD BREAK RWY 05 / 23

Pass entry EAGLE / TIGER / FALCON at 2500',  
pass INITIAL at 2000' break to the south at 2000' pattern altitude.

#### HELICOPTER ROUTES

Pass entry EAGLE / TIGER / FALCON at 1000' or below, pass INITIAL at 1000' break to the south at 1000' pattern altitude.

#### DEPARTURE ALL DIRECTIONS

pass DER below 1500ft

