

**MISSION DATA CARD**

OPORD		Callsign		Mission		Date/Time		
3106/2024		Tiger 1		Training		082004AUG24		
Task						Freq		
AO						261.15		
Departure				Recovery				
CAT				CASE I				
#	Callsign		Pilot		IFF	TCN	LSR	NET
-1	Tiger 1-1		Kosmoss		1011	1Y	1551	

**LOADOUT**

A/A						GUN	
A/G						CHF	
POD						FLR	
TKS						FUEL	

**TOLD**

	Takeoff	Target	Joker	Bingo	Land
FUEL	10803				

**AIRBASES**

	Name	TCN	ATIS	GND	TWR	RWY	Elev	ILS
Dep	CVN-73 USS G. Washington	55X		ICLS 12	304.0			
Arr	CVN-73 USS G. Washington	55X		ICLS 12	304.0			
Div	Akrotiri AFB	107X	288.2	240.1	339.85	28	62	109.7

**FLIGHTPLAN**

#	Name	Navaid/Coords/DME	ALT	TOT
1	CHT.T1	N35 03.282 E033 37.172	000	

**SUPPORT****Tanker**

Callsign	TCN	Freq	ALT	TAS
TEXACO 1	71Y	265.0	FL170	300
Pos	TEXACO1: (N3657 E03434)			

**OTHER FLIGHTS**

Callsign	Mission	Airframe	Freq	TCN	GrpId	Laser
Raptor 1	Training	4x F-16C	134.0	1/64		162X
AO		Task				

**RADIO CHANNELS**

#	Freq	Name
1		Flight/Squadron specific
2	288.2	Akrotiri ATIS
3	240.1	Akrotiri Ground
4	339.85	Aktrotiri Tower
5	335.05	Akrotiri Approach
6	360.1	Incirlik Tower
7	371.35	Incirlik Ground
8	377.475	Incirlik ATIS
9		No Preset
10	127.3	Paphos ATIS
11	353.8	Paphos Tower
12	304.0	CVN-73 George Washington
13	302.0	LHA-1 Tarawa
14	259.0	CV-59 Forrestal
15		No Preset
16	377.8	Overlord
17	265.0	KC-135 Texaco-1 medium/slow
18	319.8	KC-135 Arco-1
19	360.8	KC-135MPRS Arco-2
20	256.0	S-3B Recovery Tanker

**RAMROD**

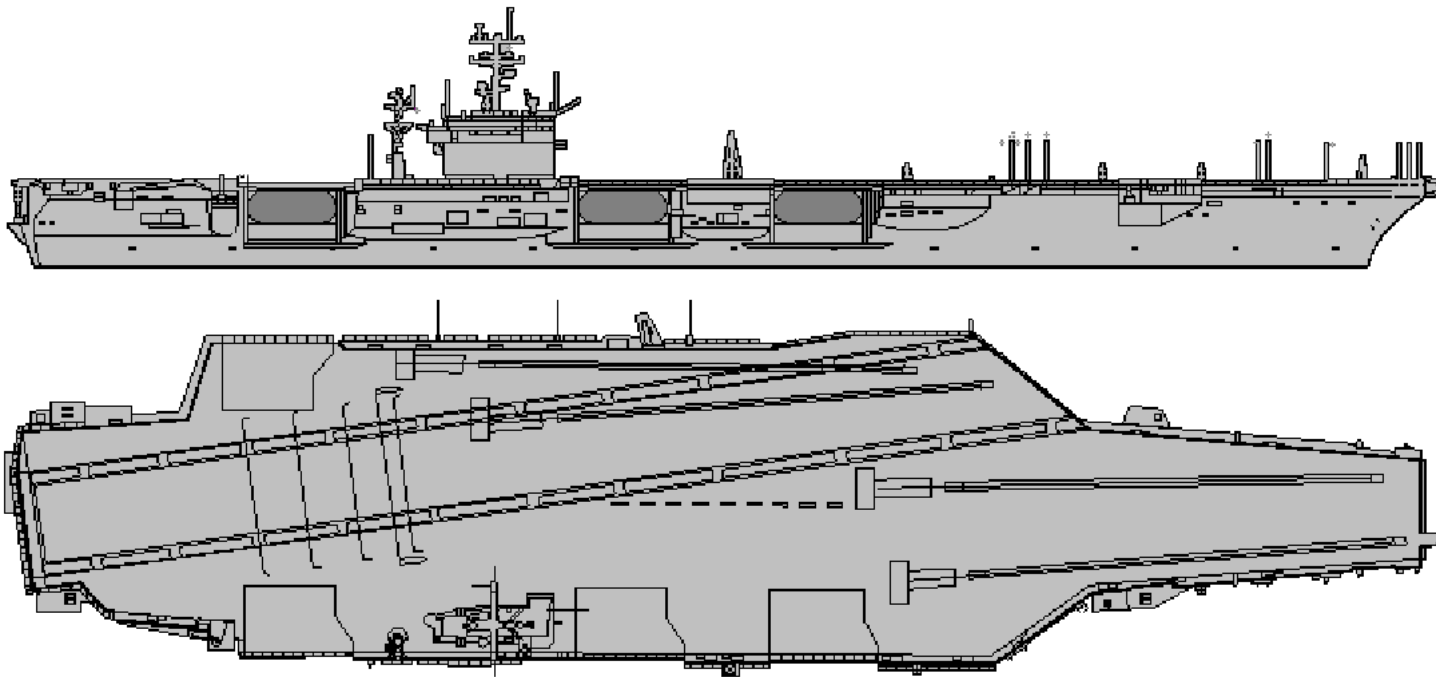
0	1	2	3	4	5	6	7	8	9
V	U	L	G	A	R	I	Z	E	S

**KTC 1400 C**

	0	1	2	3	4	5	6	7	8	9
A	VURD	CXM	PJG	QN	BF	SWY	LO	TH	KE	AI
B	MLEB	QYG	FUP	HV	AR	DTC	IW	SK	NX	OJ
C	VQLP	KFN	HBD	SI	TJ	UOM	CE	YX	RW	AG
D	LVJR	CKF	OGS	AT	WN	UXB	DQ	EH	PI	MY
E	JMVD	ABR	GSK	CH	LF	YNE	PU	TX	IO	QW
F	KMNB	QFR	XGO	CH	AS	YDJ	TL	PI	EV	UW
G	FPQY	EBL	WOH	GD	CI	RTM	XJ	US	VA	NK
H	IYMK	RLJ	VDW	OF	HP	SXC	TU	GB	QN	AE
I	LMQH	AUP	BFD	CJ	XG	NST	OY	RK	VE	WI
J	IXAB	KVU	MRY	HE	JT	FPG	WD	OQ	SC	LN
K	RQSX	GUM	KNI	VA	CH	PTY	WO	BE	DL	FJ
L	AJFC	XTO	WPQ	YM	US	IVB	HN	GR	KE	LD
M	LYJO	VWF	HDA	XN	RB	KGS	EQ	TC	PI	MU
N	ALVJ	TYU	DQW	CK	NR	SXH	EP	BI	GO	FM
O	FVTB	IEM	QLK	WH	AY	RXO	CD	UJ	GS	PN
P	HWSE	MDQ	KLY	CR	PV	TFI	XA	JO	BG	NU
Q	OAVJ	YGU	LMI	NX	DP	WRT	BK	CF	QS	EH
R	ACNQ	XIO	KPT	EU	JV	LFB	RD	GH	YW	MS
S	XHAF	NCR	JTG	SE	IL	PKV	MD	UQ	WO	BY
T	UMCK	LSE	FQV	AW	XR	YJB	TO	NI	PH	DG
U	MBXV	QGI	FAK	ON	CD	UPL	SJ	EY	RT	WH
V	GROU	NBT	SVA	DH	EY	MJQ	WC	XK	LI	PF
W	CFMV	SUP	GON	QI	JK	DLH	BE	WR	XT	AY
X	LJTS	DYO	AFP	CE	HI	RUQ	MX	KW	GN	VB
Y	BWDA	NEF	LXR	GQ	UI	MCV	HO	PK	YJ	TS

**NAVAIDS**

<b>Id</b>	<b>Name</b>	<b>Channel</b>	<b>Position</b>	<b>Elevation</b>
DAN	Incirlik	21	N37 00.950 E035 26.883	243
AKR	Akrotiri	107	N34 34.765 E032 57.769	147
PHA	Paphos	79	N34 42.997 E032 28.963	35
RMD	Ramat David	84	N32 39.892 E035 11.265	136
OS66	Kuweires Military Aviation Institute	36	N36 11.362 E037 34.226	1200





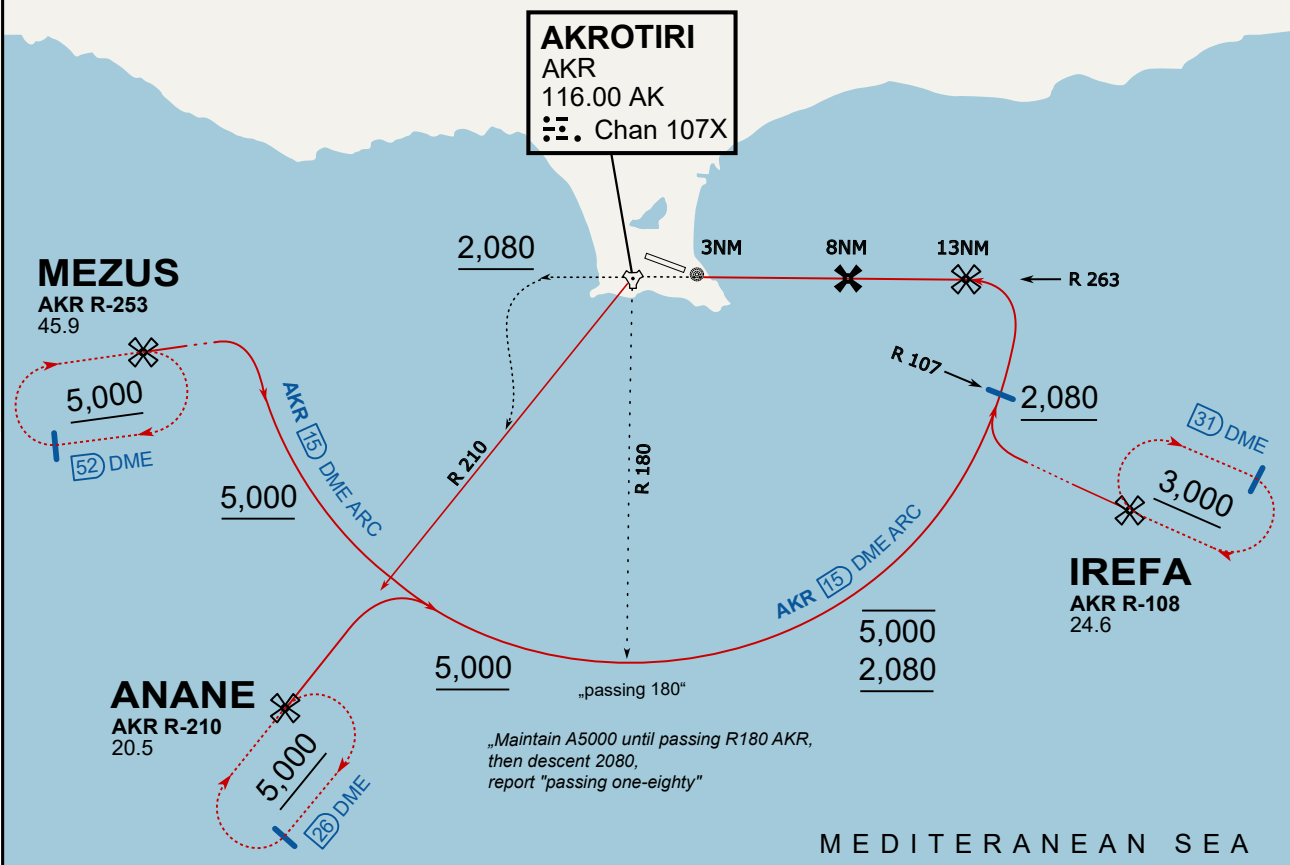




**ATIS**  
 288.200  
**AKROTIRI GROUND**  
 122.100  
**AKROTIRI TOWER**  
 339.850  
**APP (OVERLORD)**  
 377.800

**NOT FOR CIVIL USE**

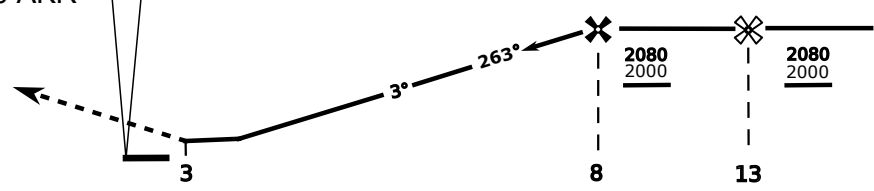
CAUTION: If unable to comply with restrictions advise ATC prior to departure.



On Track 263° climb A 4.000'.  
 passing 2.080' (2.000' AAL)  
 turn left and intercept R-210 AKR  
 to ANANE.  
 Enter ANANE Holding.

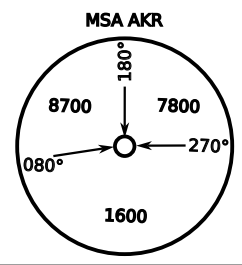


DME AKR	7	6	5	4
ALT	1780	1460	1140	820

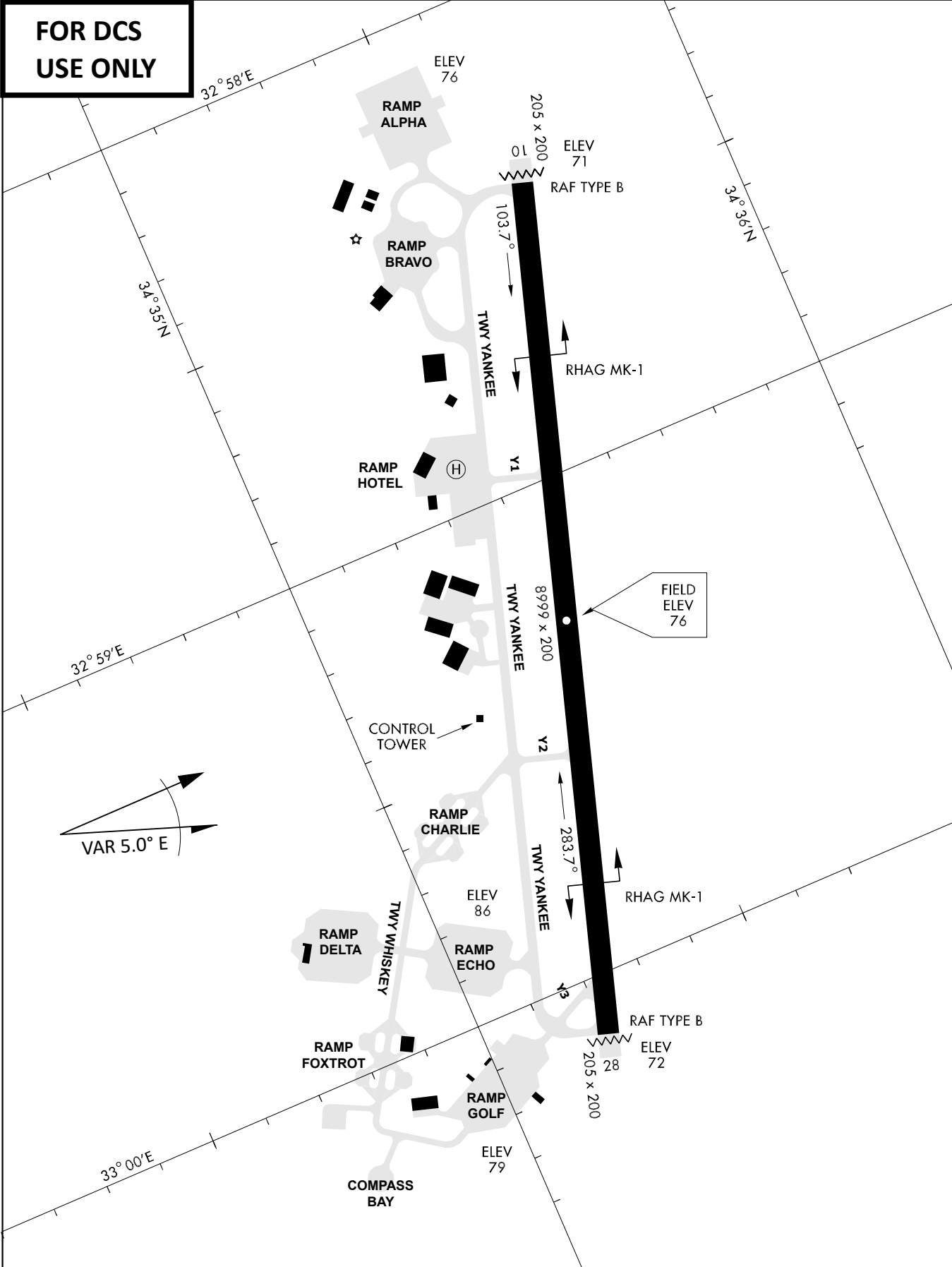


THR Elev 74ft DME AKR

CAT	TAC	CIRCLE	GS (kts)	80	120	150	180	210
A	500(430)	680 (610) 2000m	FAF - MAPt (4.1NM)	3:06	2:03	1:38	1:22	1:10
B	1300m		RoD (fpm)	420	640	800	950	1110
C	780 (710) 2600m	N/A	780 (710) 3300m	- CIRCLING PROHIBITED N of Rwy - final track is offset 20° right of RCL and Intcp 1.1NM before THR - when established on final contact tower - Timing not Auth to define MAPt				
D			780 (710) 3600m					
E			1380 (1310) 5000m					
		1380 (1310) 5000m						



**FOR DCS  
 USE ONLY**



ATIS	AKROTIRI GND	AKROTIRI TWR	OVERLORD CONTROL	TACAN	FIELD ELEVATION
288.20 MHz	240.10   122.10	339.85   130.075	377.8	AKR 107X	<b>75 [ft] 23 [m]</b>