

MISSION DATA CARD

OPORD		Callsign		Mission		Date/Time		
3105/2024		Raptor 1		Training		081701AUG24		
Task							Freq	
AO							134.0	
Departure				Recovery				
RWY28 VFR				RWY10 VFR				
#	Callsign		Pilot		IFF	TCN	LSR	NET
-1	Raptor 1-1		Jinx		1611	1Y	1621	
-2	Raptor 1-2		Snowbird		1612	64Y	1622	

LOADOUT

A/A	2xA120C, 2xA9X					GUN	100% HEI-T
A/G	4xG12, 2xG10					CHF	60
POD	HTS, TGP					FLR	60
TKS	FT300					FUEL	100%

TOLD

	Takeoff	Target	Joker	Bingo	Land
FUEL	9166				

AIRBASES

	Name		TCN	ATIS	GND	TWR	RWY	Elev	ILS
Dep	Akrotiri AFB		107X	288.2	240.1	339.85	28	62	109.7
Arr	Akrotiri AFB		107X	288.2	240.1	339.85	28	62	109.7

FLIGHTPLAN

#	Name	Navaid/Coords/DME	ALT	TOT
1	PAPA	N34 39.390 E032 46.480	5000	
2	ECHO	N34 42 31.443 E033 10 00.221	5000	

SUPPORT**Tanker**

Callsign	TCN	Freq	ALT	TAS
SHELL 3	93Y	278.75	FL170	215
Pos	SHELL3: (N3436 E03419)			

OTHER FLIGHTS

Callsign	Mission	Airframe	Freq	TCN	GrpId	Laser
Tiger 1	Training	2x F/A-18C	261.15	1/64		155X
AO		Task				

RADIO CHANNELS

#	Freq	Name
1		Flight/Squadron specific
2	288.2	Akrotiri ATIS
3	240.1	Akrotiri Ground
4	339.85	Aktrotiri Tower
5	335.05	Akrotiri Approach
6	360.1	Incirlik Tower
7	371.35	Incirlik Ground
8	377.475	Incirlik ATIS
9		No Preset
10	127.3	Paphos ATIS
11	353.8	Paphos Tower
12	304.0	CVN-73 George Washington
13	302.0	LHA-1 Tarawa
14	259.0	CV-59 Forrestal
15		No Preset
16	377.8	Overlord
17	265.0	KC-135 Texaco-1 medium/slow
18	319.8	KC-135 Arco-1
19	360.8	KC-135MPRS Arco-2
20	256.0	S-3B Recovery Tanker

RAMROD

0	1	2	3	4	5	6	7	8	9
V	U	L	G	A	R	I	Z	E	S

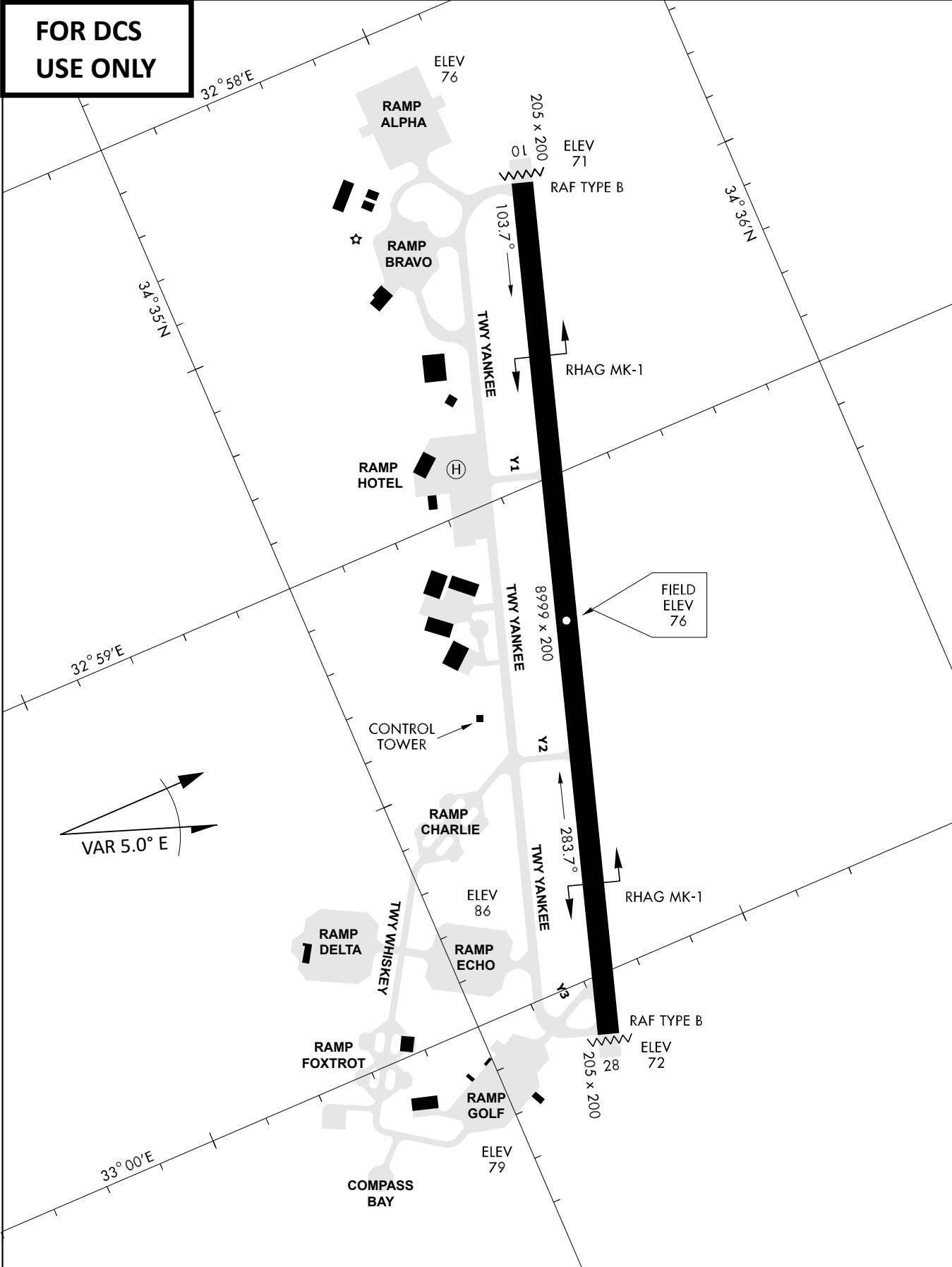
KTC 1400 C

	0	1	2	3	4	5	6	7	8	9
A	VURD	CXM	PJG	QN	BF	SWY	LO	TH	KE	AI
B	MLEB	QYG	FUP	HV	AR	DTC	IW	SK	NX	OJ
C	VQLP	KFN	HBD	SI	TJ	UOM	CE	YX	RW	AG
D	LVJR	CKF	OGS	AT	WN	UXB	DQ	EH	PI	MY
E	JMVD	ABR	GSK	CH	LF	YNE	PU	TX	IO	QW
F	KMNB	QFR	XGO	CH	AS	YDJ	TL	PI	EV	UW
G	FPQY	EBL	WOH	GD	CI	RTM	XJ	US	VA	NK
H	IYMK	RLJ	VDW	OF	HP	SXC	TU	GB	QN	AE
I	LMQH	AUP	BFD	CJ	XG	NST	OY	RK	VE	WI
J	IXAB	KVU	MRY	HE	JT	FPG	WD	OQ	SC	LN
K	RQSX	GUM	KNI	VA	CH	PTY	WO	BE	DL	FJ
L	AJFC	XTO	WPQ	YM	US	IVB	HN	GR	KE	LD
M	LYJO	VWF	HDA	XN	RB	KGS	EQ	TC	PI	MU
N	ALVJ	TYU	DQW	CK	NR	SXH	EP	BI	GO	FM
O	FVTB	IEM	QLK	WH	AY	RXO	CD	UJ	GS	PN
P	HWSE	MDQ	KLY	CR	PV	TFI	XA	JO	BG	NU
Q	OAVJ	YGU	LMI	NX	DP	WRT	BK	CF	QS	EH
R	ACNQ	XIO	KPT	EU	JV	LFB	RD	GH	YW	MS
S	XHAF	NCR	JTG	SE	IL	PKV	MD	UQ	WO	BY
T	UMCK	LSE	FQV	AW	XR	YJB	TO	NI	PH	DG
U	MBXV	QGI	FAK	ON	CD	UPL	SJ	EY	RT	WH
V	GROU	NBT	SVA	DH	EY	MJQ	WC	XK	LI	PF
W	CFMV	SUP	GON	QI	JK	DLH	BE	WR	XT	AY
X	LJTS	DYO	AFP	CE	HI	RUQ	MX	KW	GN	VB
Y	BWDA	NEF	LXR	GQ	UI	MCV	HO	PK	YJ	TS

NAVAIDS

Id	Name	Channel	Position	Elevation
DAN	Incirlik	21	N37 00.950 E035 26.883	243
AKR	Akrotiri	107	N34 34.765 E032 57.769	147
PHA	Paphos	79	N34 42.997 E032 28.963	35
RMD	Ramat David	84	N32 39.892 E035 11.265	136
OS66	Kuweires Military Aviation Institute	36	N36 11.362 E037 34.226	1200

**FOR DCS
 USE ONLY**

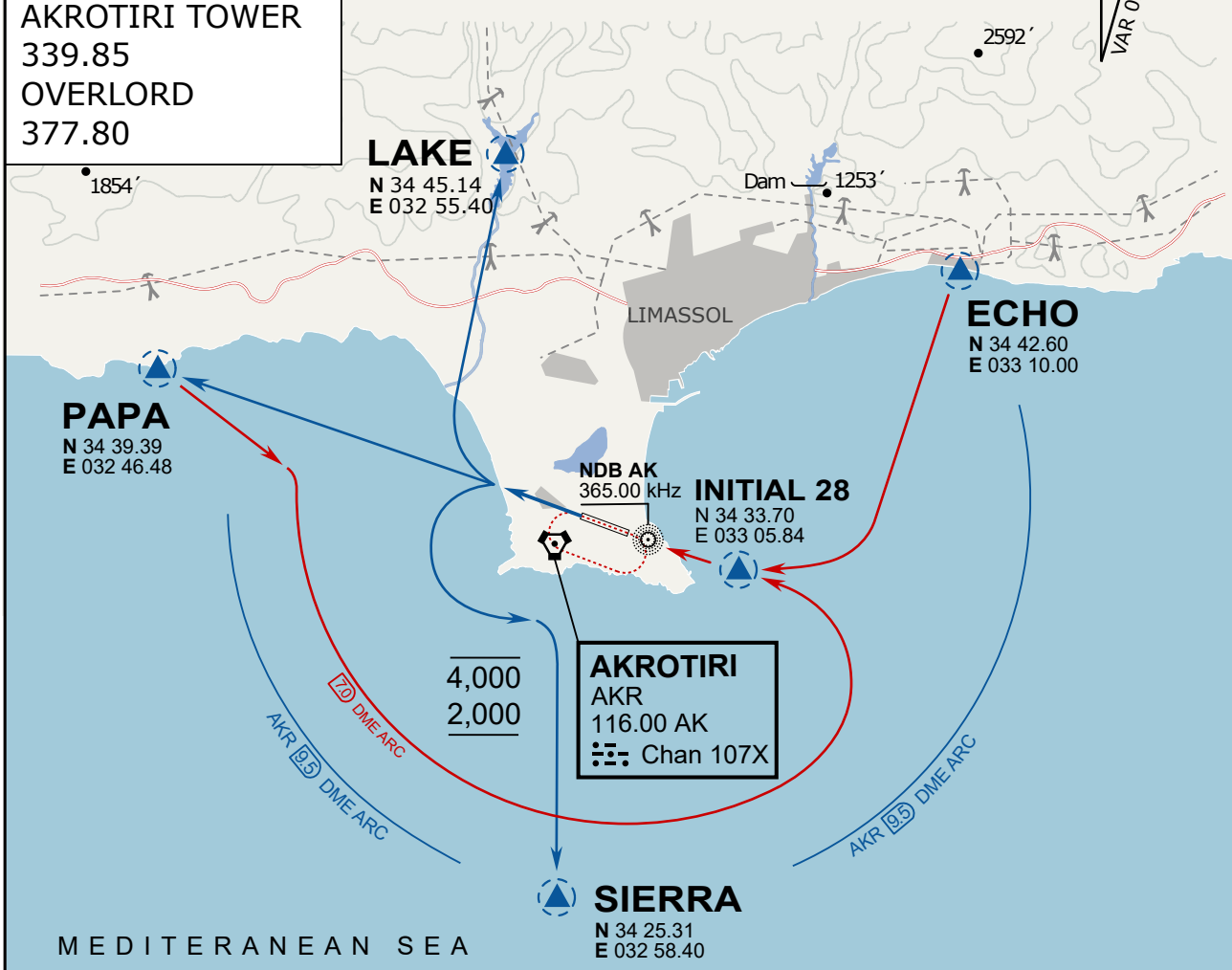


ATIS	AKROTIRI GND	AKROTIRI TWR	OVERLORD CONTROL	TACAN	FIELD ELEVATION
288.20 MHz	240.10 122.10	339.85 130.075	377.8	AKR 107X	75 [ft] 23 [m]

ATIS
 288.20
AKROTIRI GROUND
 240.10
AKROTIRI TOWER
 339.85
OVERLORD
 377.80

NOT FOR CIVIL USE

CAUTION: If unable to comply
 with restrictions advise ATC
 prior to departure.



ARR / DEP ROUTE DESCRIPTION

STRAIGHT-IN RWY28

Pass ENTRY at 5.000' MSL or below, pass INITIAL at 1.500' MSL or below.

OVERHEAD BREAK RWY28

Pass ENTRY at 5.000' MSL or below, pass INITIAL at 2.000' MSL, break to the south.

DEPARTURE GENERAL

Pass Departure end of runway at 1.000' or below.

DEP RWY28 PAPA: Fly straight ahead to exit.

DEP RWY28 LAKE: Fly straight ahead until coast, than right turn direct exit.

DEP RWY28 SIERRA: Fly straight ahead until coastline, then climbing left turn, intercept AKR R-180 to exit.

DEP ECHO: no exit.

ATIS

288.20

AKROTIRI GROUND

240.10

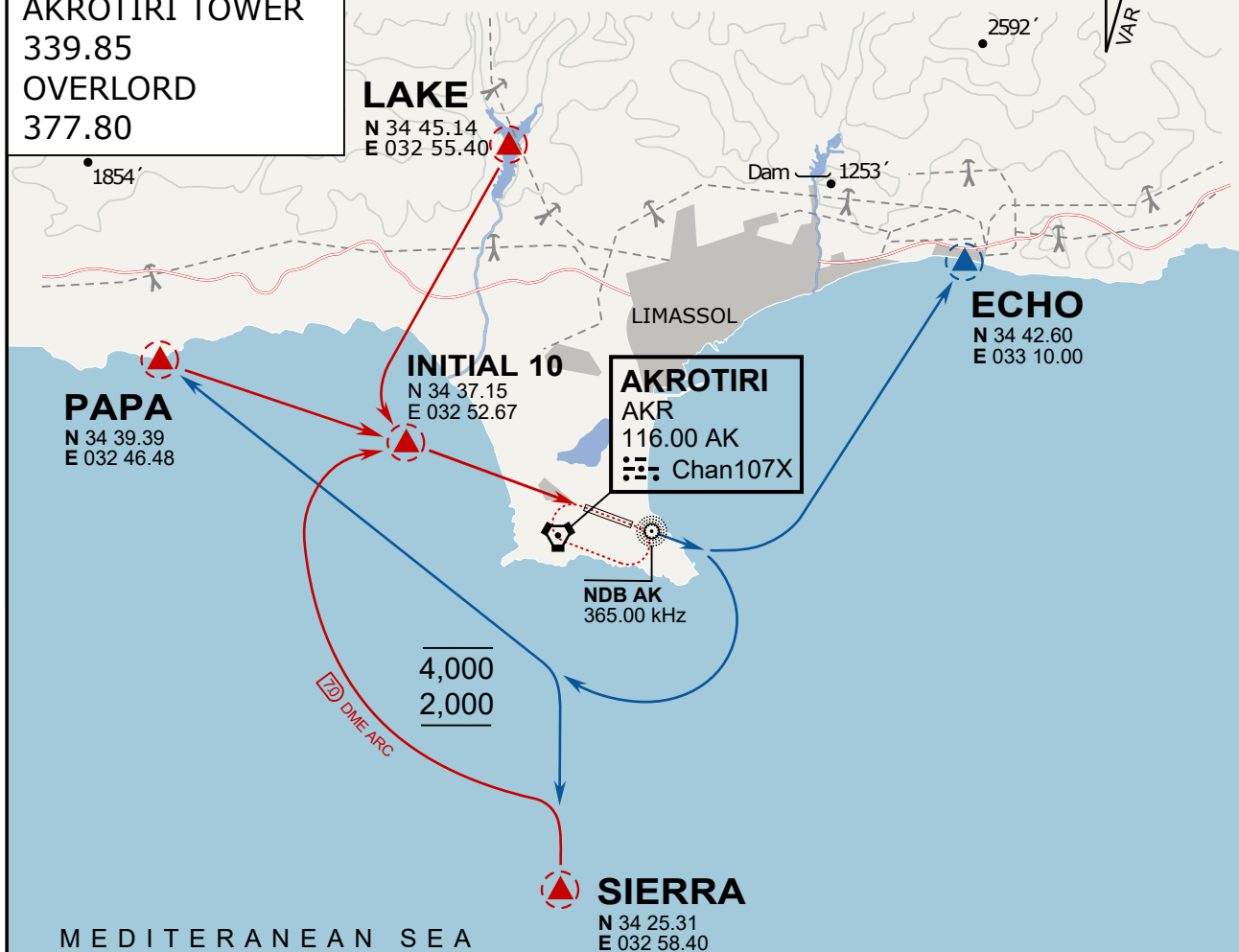
AKROTIRI TOWER

339.85

OVERLORD

377.80

NOT FOR CIVIL USE

CAUTION: If unable to comply
with restrictions advise ATC
prior to departure.

ARR / DEP ROUTE DESCRIPTION

ARRIVAL GENERAL

Pass Entry at 5.000' or below. Overhead Brake RWY 10: pass INITIAL 10 at 2.000' MSL.
Straight-in RWY 10 : pass INITIAL 1.500' or below.

ARR RWY10 PAPA / LAKE: Direct initial.

ARR RWY10 SIERRA: Intercept ARC 7 of AKR to INITIAL 10.

ARR ECHO: no ENTRY.

DEPARTURE GENERAL

Pass Departure end of runway at 1.000' AGL or below. Keep RWY heading until coastline.

DEP RWY10 ECHO: Direct EXIT.

DEP RWY10 SIERRA: Climbing right turn, intercept R180 AKR to Sierra.

DEP RWY10 PAPA: Climbing right turn until R180 AKR, then direct Papa

DEP LAKE: no EXIT.