

MISSION DATA CARD

OPORD		Callsign		Mission		Date/Time	
3102/2024		Nazgul 6		CAP		052000AUG24	
Task	BVR Maneuver Training					Freq	
AO	ETTR					262.45	
Departure				Recovery			
VFR				VFR			
#	Callsign	Pilot	IFF	TCN	LSR	NET	
-1	Nazgul 6-1	Striver/Uta	1161	1Y	1561		
-2	Nazgul 6-2	Razorback	1162	64Y	1562		
-3	Nazgul 6-3	Repsus/Lempo	1163	64X	1563		

LOADOUT

A/A	6xA120C, 2xA9M			GUN	100% SAPHEI
A/G				CHF	120
POD	TGT, NAV			FLR	60
TKS	2xFT610			FUEL	100%

TOLD

	Takeoff	Target	Joker	Bingo	Land
FUEL	30518				

AIRBASES

	Name	TCN	ATIS	GND	TWR	RWY	Elev	ILS
Dep	Incirlik AFB	21X	377.47 5	371.35	360.1	5	190	
Arr	Incirlik AFB	21X	377.47 5	371.35	360.1	5	190	
Div	Incirlik AFB	21X	377.47 5	371.35	360.1	5	190	

FLIGHTPLAN

#	Name	Navaid/Coords/DME	ALT	TOT
1	INITIAL 23	N37 03.956 E035 31.866	1500	
2	FALCON	N37 05.067 E035 40.888	2000	
3	CAP 1	N35 02 E035 57	35000	
4	CAP 2	N34 05 E034 25	35000	
5	NFZ N	N35 59 E035 29	35000	
6	NFZ S	N33 20 E035	35000	
7	Shore S	N33 41 E035 26	0	
8	Shore Mid	N34 35 E035 59	0	
9	Shore N	N36 09 E035 53	0	
10	INITIAL 05	N36 56.654 E035 19.839	2000	
11	EAGLE	N36 52.938 E035 21.611	2500	

COMMS

Radio	Usage
1	01
2	04 / 16 / 04

NOTES

===SEQUENCE===

0800J

ATIS : RW05, QNH 29.82

T/O Incirlik Dep via INIT23 and FALCON

MIL PWR CLMB to A35

CAP 1 - HOT 150 - 15nm - A35 - M.8 - LH - split EL

RTB AKR Rec via VFR EAGLE

===RADIO===

NAZGUL 6 - CH01

BALROG 7 - CH02

AKR TWR - CH04

CVN72 - CH07 - TCN72X

OVERLORD1 - CH16 (on station 0812J)

ARCO1 - CH17 (on station 0824J)

===ROE - weapons hold===

- aggressive maneuvering

- STT

- distance to CG 40nm

- west WP5->6

SUPPORT**Tanker**

Callsign	TCN	Freq	ALT	TAS
ARCO 1	22Y	319.8	FL222	400
	Pos	ARCO1: (N3701 E03457)		

AWACS

Callsign	Freq	ALT	Pos
OVERLORD2	377.8	FL320	N3713 E03643 - N3714 E03749

RADIO CHANNELS

#	Freq	Name
1		Flight/Squadron specific
2	288.2	Akrotiri ATIS
3	240.1	Akrotiri Ground
4	339.85	Aktrotiri Tower
5	335.05	Akrotiri Approach
6	360.1	Incirlik Tower
7	371.35	Incirlik Ground
8	377.475	Incirlik ATIS
9		No Preset
10	127.3	Paphos ATIS
11	353.8	Paphos Tower
12	304.0	CVN-73 George Washington
13	302.0	LHA-1 Tarawa
14	259.0	CV-59 Forrestal
15		No Preset
16	377.8	Overlord
17	265.0	KC-135 Texaco-1 medium/slow
18	319.8	KC-135 Arco-1
19	360.8	KC-135MPRS Arco-2
20	256.0	S-3B Recovery Tanker

RAMROD

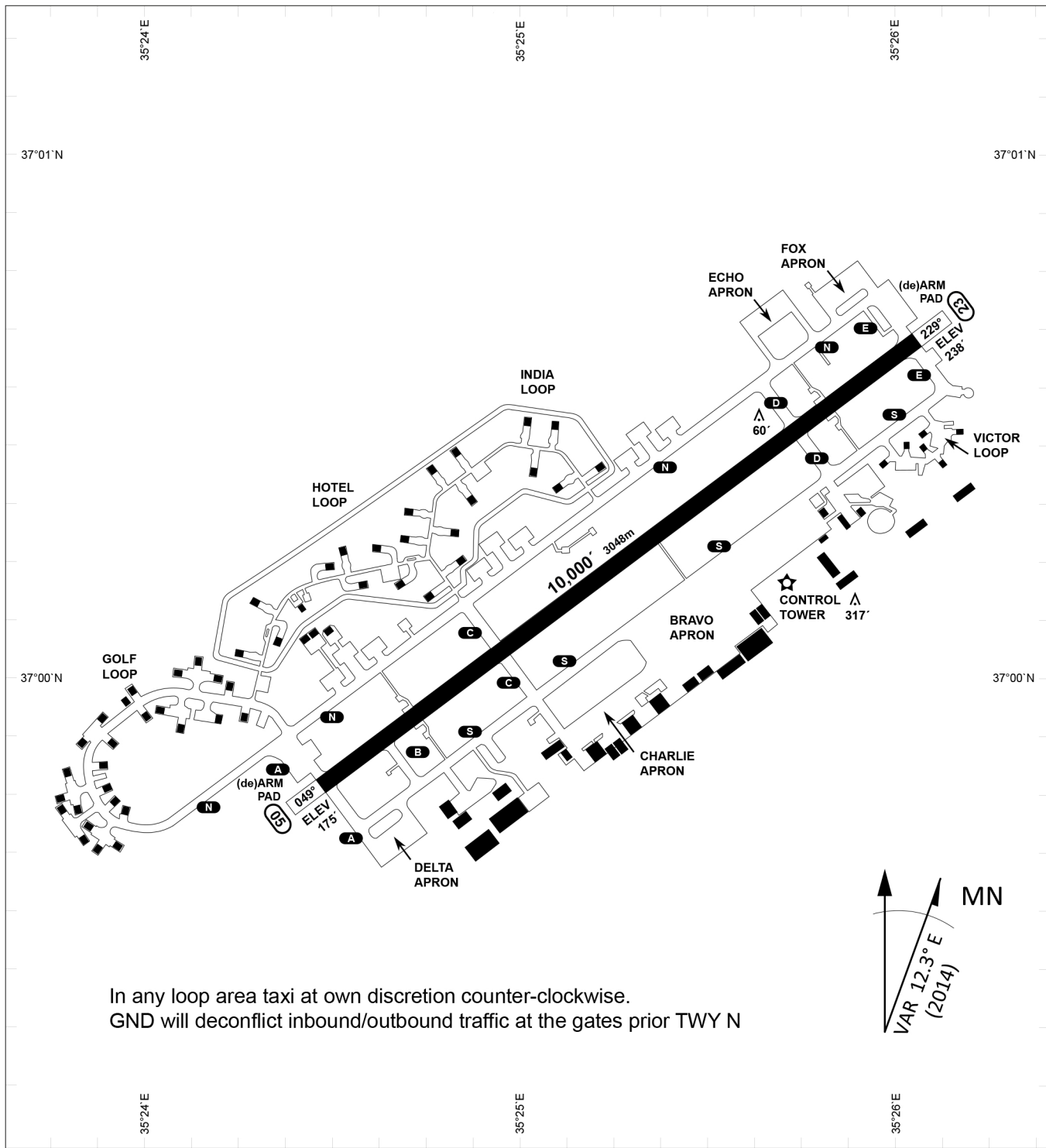
0	1	2	3	4	5	6	7	8	9
D	E	C	A	T	H	L	O	N	S

KTC 1400 C

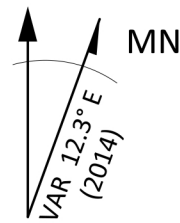
	0	1	2	3	4	5	6	7	8	9
A	XVLA	GRS	WTC	OD	NE	PHM	IQ	BK	FJ	UY
B	NDVB	GCT	MUA	FY	HW	XRJ	OI	KP	ES	QL
C	LCNY	GDI	HBW	RV	UE	TAO	PX	SM	FJ	KQ
D	WFEN	HGB	TXJ	UD	MC	ISA	QV	KR	PY	LO
E	DFAM	TUB	PGK	XW	HJ	ICE	VL	RQ	SY	ON
F	ITWP	MAD	BJL	XN	UE	SYR	HQ	CO	KG	VF
G	KDIF	CPL	BGS	XO	EW	NAQ	JH	VY	MU	TR
H	EYIU	NDC	OAW	JV	MF	XKG	QB	HL	PS	RT
I	OIJM	CSN	YLE	UF	VK	WTA	GH	DP	QR	XB
J	GKIV	HOX	ERM	FJ	CY	LQT	SU	DN	BP	AW
K	JSMA	URN	YDI	VG	XB	KWP	EL	TH	QF	CO
L	TBAV	DNG	PCI	UW	HX	KJS	RQ	OL	EY	MF
M	MKUN	SBT	DVX	EG	HR	OJA	QY	CP	WF	IL
N	WVRT	OMF	KPQ	DG	BJ	XIY	HS	NC	AU	EL
O	TFDA	XUJ	RSW	VO	BI	MCH	LP	YK	NQ	EG
P	GRMW	JVH	IES	NK	LF	TXA	BQ	CD	UP	OY
Q	KUOE	WMY	JRX	NC	LD	GTI	SB	PQ	HF	AV
R	YWNI	TPF	QJG	HL	SD	CKM	OB	RE	XA	UV
S	UVRT	SYH	CNB	EX	FI	APK	JQ	LG	OW	DM
T	KHEF	BYU	QVX	JW	SL	NOT	RD	PI	AC	MG
U	JQBO	EVG	YMN	WX	SA	HTC	PI	LR	KD	UF
V	NOJQ	XKH	CPF	RB	AI	TVE	YM	LD	WS	UG
W	XMHW	FLQ	RNT	AC	DK	BVG	EI	US	OY	PJ
X	CNEL	HBS	KRD	YJ	UG	VWF	MI	AT	PQ	XO
Y	MRWO	THN	KGS	UV	BD	IXY	EJ	CF	QL	PA

NAVAIDS

Id	Name	Channel	Position	Elevation
DAN	Incirlik	21	N37 00.950 E035 26.883	243
AKR	Akrotiri	107	N34 34.765 E032 57.769	147
PHA	Paphos	79	N34 42.997 E032 28.963	35
RMD	Ramat David	84	N32 39.892 E035 11.265	136
OS66	Kuweires Military Aviation Institute	36	N36 11.362 E037 34.226	1200



In any loop area taxi at own discretion counter-clockwise.
 GND will deconflict inbound/outbound traffic at the gates prior TWY N



PAR	RWY	CAT	MINIMA	ARP	ELEV	Scale 1:35'500
	21L	A B D E	2057 - 0.8 200 (200-0.8/1.6) GS 3°	37°0'56.000" N 35°26'53.000" E	1857 [ft]	0 300 600 900 1200 1500 [m] 0 1000 2000 3000 4000 5000 [ft]
	3R	A B D E	2057 - 0.8 200 (200-0.8/1.6) GS 3°		566 [m]	
SRA	21R	A C D E	2257 - 1.2 350 (350-1.2/1.6)			
	3L	A C D E	2257 - 1.2 350 (350-1.2/1.6)			

RWY	TORA	TORA from D	TORA from B	COURSE	PSN THR	ALS
23	10,000 [ft] 3048 [m]	8,000 [ft] 2438 [m]		235°	37°00.611'N 035°26.368'E	⊙
05	10,000 [ft] 3048 [m]		9,000 [ft] 2743 [m]	055°	36°59.043'N 035°24.760'E	⊙

ATIS	INCIRLIK GROUND	INCIRLIK TOWER	CONTROL	TACAN	ILS RWY 05	ILS RWY 23
377.475	371.350 123.020	360.100 121.100	337.800	DAN21x	109.3MHz	111.7MHz

ATIS
377.475 (#8)

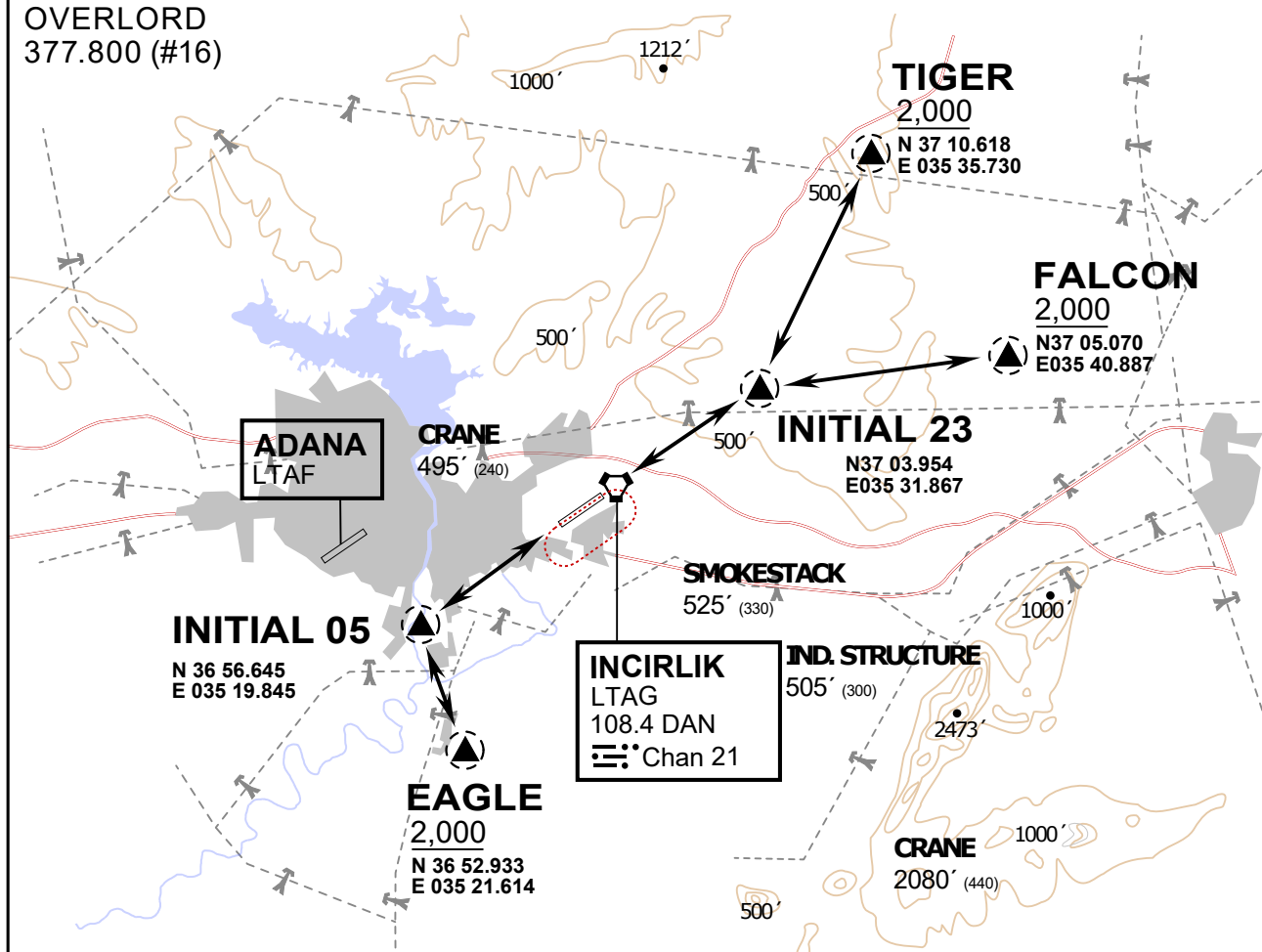
INCIRLIK GROUND
371.3500 (#7)

INCIRLIK TOWER
360.100 (#6)

OVERLORD
377.800 (#16)

NOT FOR CIVIL USE

CAUTION: If unable to comply
with restrictions advise ATC
prior to departure.



vJaBoG32 ETTR NAV CHART



ARR / DEP ROUTE DESCRIPTION

STRAIGHT-IN RWY 05 / 23

Pass entry EAGLE / TIGER / FALCON at 2000' and INITIAL at 1500'

OVERHEAD BREAK RWY 05 / 23

Pass entry EAGLE / TIGER / FALCON at 2500',
pass INITIAL at 2000' break to the south at 2000' pattern altitude.

HELICOPTER ROUTES

Pass entry EAGLE / TIGER / FALCON at 1000' or below, pass INITIAL at 1000' break to the south at 1000' pattern altitude.

DEPARTURE ALL DIRECTIONS

pass DER below 1500ft

ATIS
377.475 (#8)

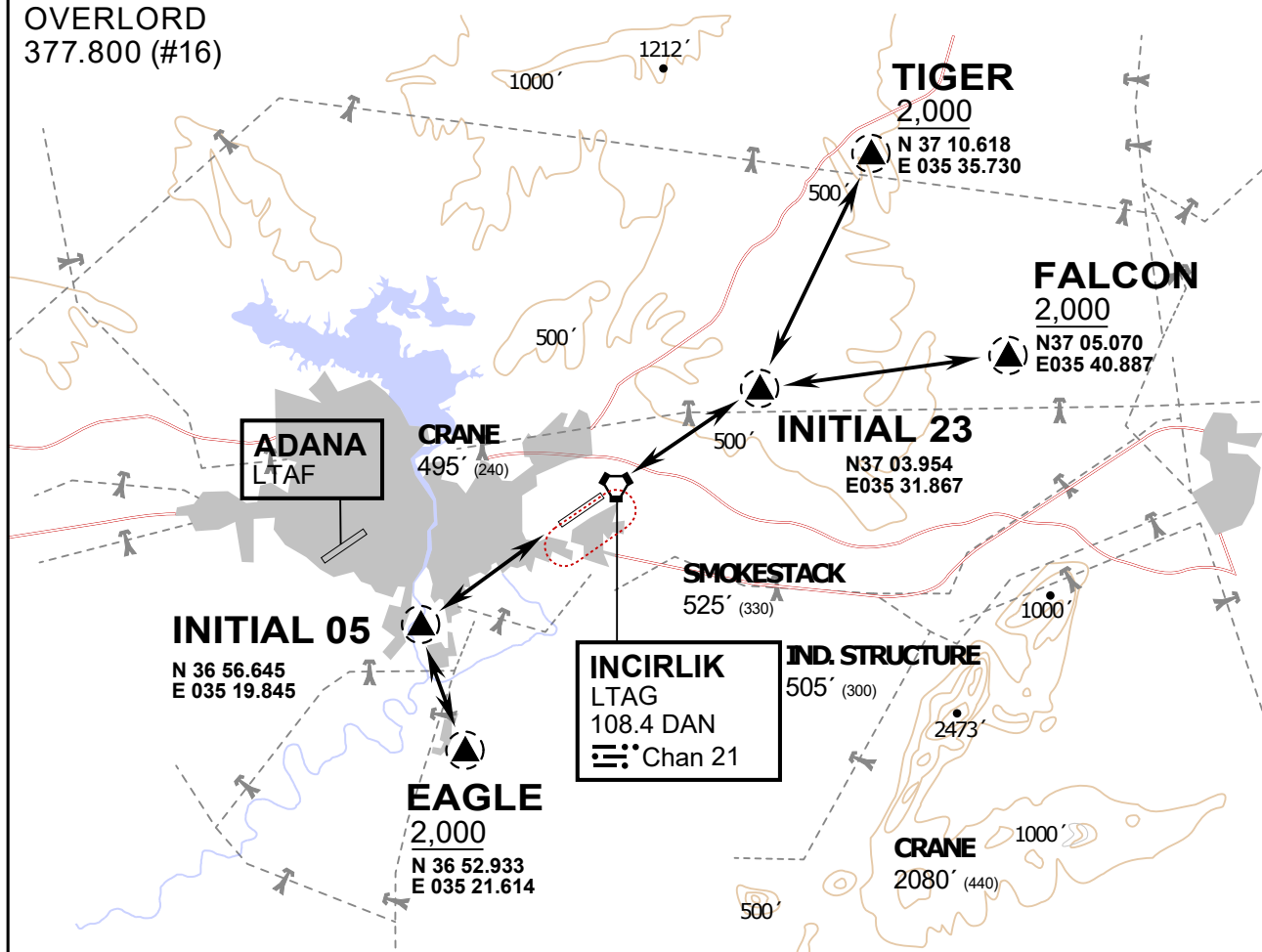
INCIRLIK GROUND
371.3500 (#7)

INCIRLIK TOWER
360.100 (#6)

OVERLORD
377.800 (#16)

NOT FOR CIVIL USE

CAUTION: If unable to comply
with restrictions advise ATC
prior to departure.



vJaBoG32 ETTR NAV CHART



ARR / DEP ROUTE DESCRIPTION

STRAIGHT-IN RWY 05 / 23

Pass entry EAGLE / TIGER / FALCON at 2000' and INITIAL at 1500'

OVERHEAD BREAK RWY 05 / 23

Pass entry EAGLE / TIGER / FALCON at 2500',
pass INITIAL at 2000' break to the south at 2000' pattern altitude.

HELICOPTER ROUTES

Pass entry EAGLE / TIGER / FALCON at 1000' or below, pass INITIAL at 1000' break to the south at 1000' pattern altitude.

DEPARTURE ALL DIRECTIONS

pass DER below 1500ft

ATIS
377.475 (#8)

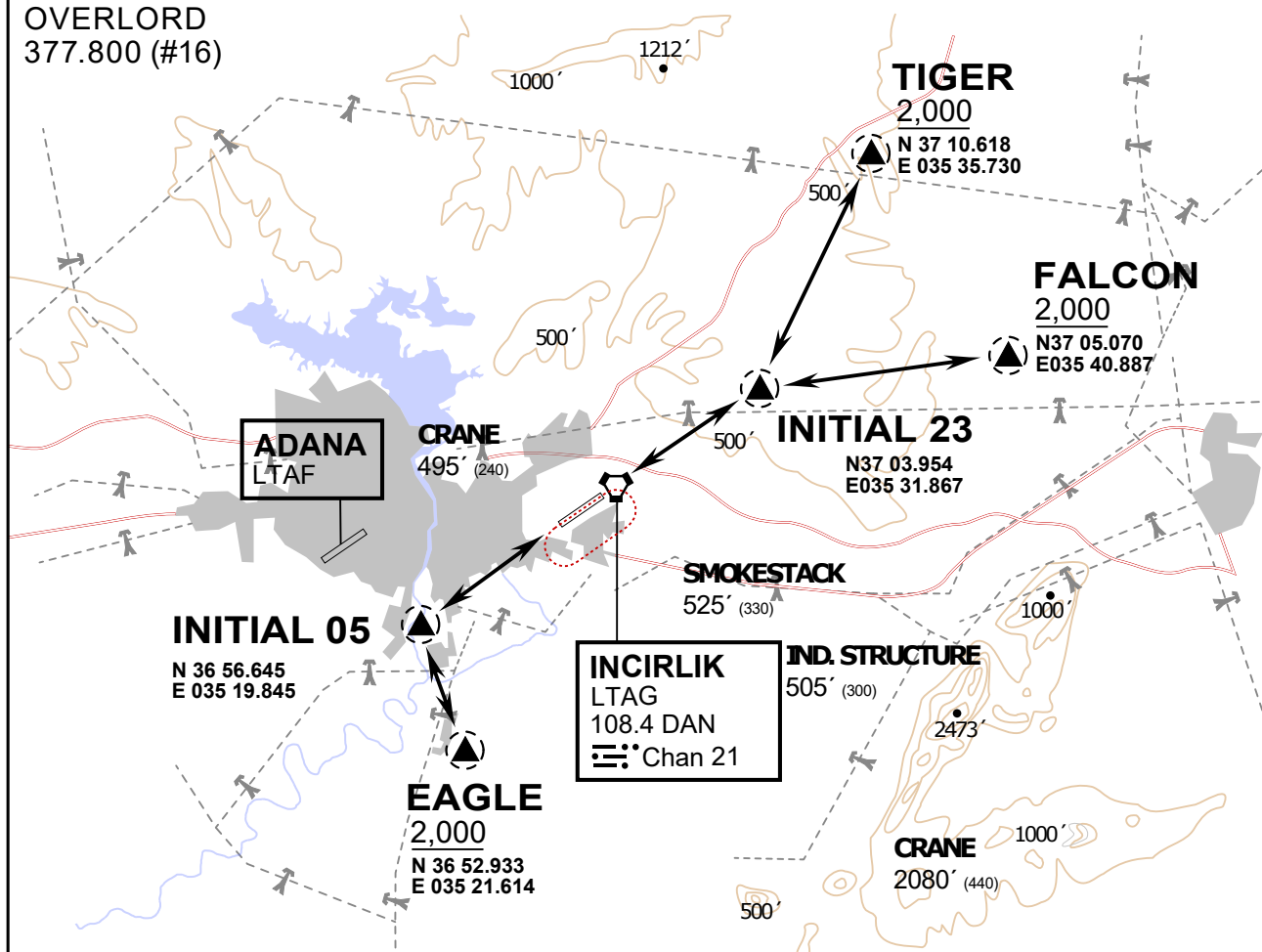
INCIRLIK GROUND
371.3500 (#7)

INCIRLIK TOWER
360.100 (#6)

OVERLORD
377.800 (#16)

NOT FOR CIVIL USE

CAUTION: If unable to comply
with restrictions advise ATC
prior to departure.



vJaBoG32 ETTR NAV CHART



ARR / DEP ROUTE DESCRIPTION

STRAIGHT-IN RWY 05 / 23

Pass entry EAGLE / TIGER / FALCON at 2000' and INITIAL at 1500'

OVERHEAD BREAK RWY 05 / 23

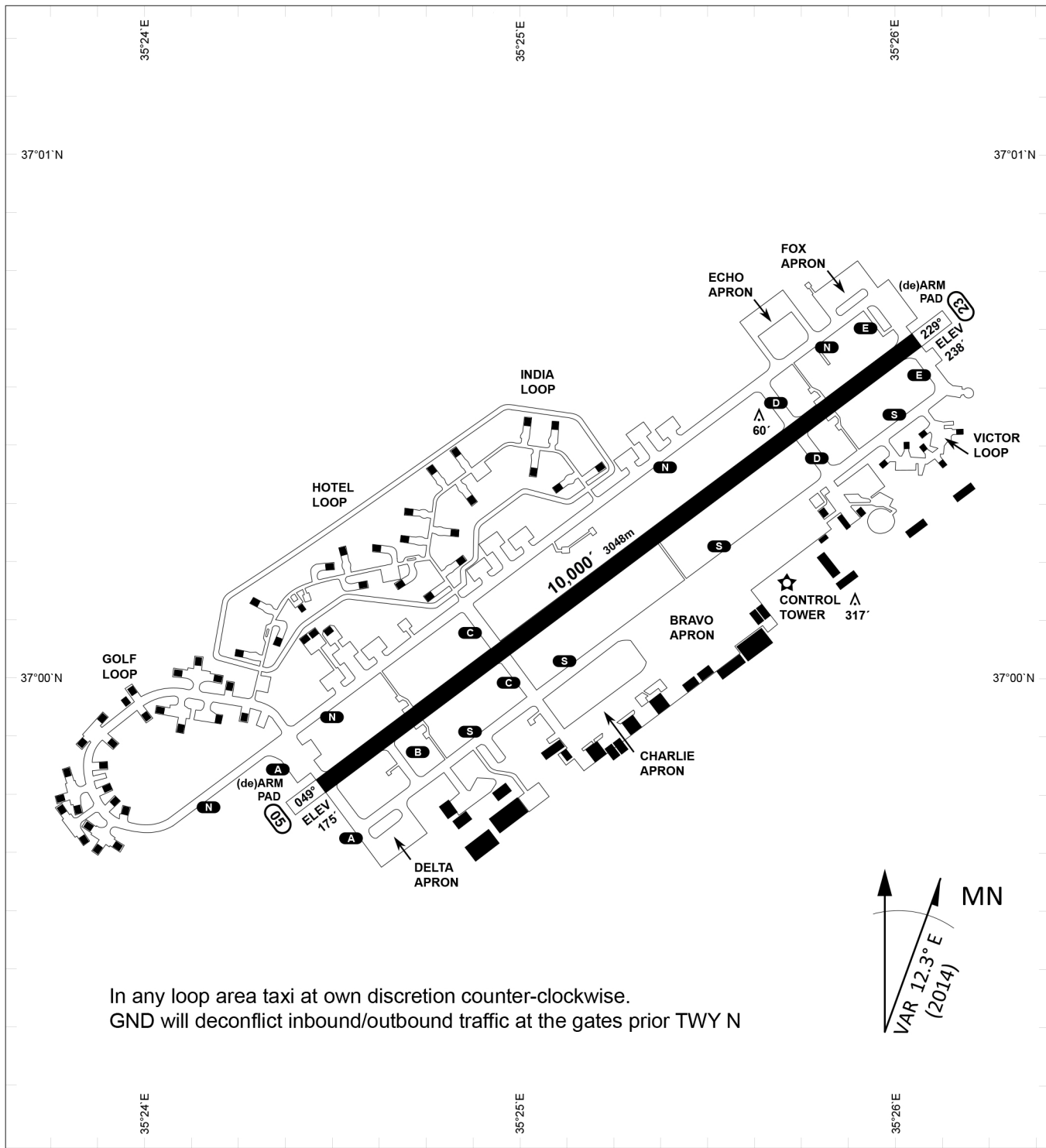
Pass entry EAGLE / TIGER / FALCON at 2500',
pass INITIAL at 2000' break to the south at 2000' pattern altitude.

HELICOPTER ROUTES

Pass entry EAGLE / TIGER / FALCON at 1000' or below, pass INITIAL at 1000' break to the south at 1000' pattern altitude.

DEPARTURE ALL DIRECTIONS

pass DER below 1500ft



In any loop area taxi at own discretion counter-clockwise.
 GND will deconflict inbound/outbound traffic at the gates prior TWY N

PAR	RWY	CAT	MINIMA	ARP	ELEV	Scale 1:35'500 0 300 600 900 1200 1500 [m] 0 1000 2000 3000 4000 5000 [ft]
	21L	A B D E	2057 - 0.8 200 (200-0.8/1.6) GS 3°	37°0'56.000" N	1857 [ft]	
SRA	21R	A C D E	2257 - 1.2 350 (350-1.2/1.6)	35°26'53.000" E	566 [m]	
	3L	A C D E	2257 - 1.2 350 (350-1.2/1.6)			

RWY	TORA	TORA from D	TORA from B	COURSE	PSN THR	ALS
23	10,000 [ft] 3048 [m]	8,000 [ft] 2438 [m]		235°	37°00.611'N 035°26.368'E	⊙
05	10,000 [ft] 3048 [m]		9,000 [ft] 2743 [m]	055°	36°59.043'N 035°24.760'E	⊙

ATIS	INCIRLIK GROUND	INCIRLIK TOWER	CONTROL	TACAN	ILS RWY 05	ILS RWY 23
377.475	371.350 123.020	360.100 121.100	337.800	DAN21x	109.3MHz	111.7MHz