

MISSION DATA CARD

OPORD		Callsign		Mission		Date/Time		
3099/2024		Nazgul 6		Strike		012000AUG24		
Task	Safe Escape Training					Freq		
AO	Northern Syria					262.45		
Departure				Recovery				
RWY28 VFR				RWY10 VFR				
#	Callsign		Pilot		IFF	TCN	LSR	NET
-1	Nazgul 6-1		Striver/Uta		1161	1Y	1561	
-2	Nazgul 6-2		Tank/Lempo		1162	64Y	1562	
-3	Nazgul 6-3		Razorback		1163	64X	1563	

LOADOUT

A/A	2xA9M, 2xA120C				GUN	100% SAPHEI
A/G	12xM82				CHF	120
POD	TGT, NAV				FLR	60
TKS	FT610				FUEL	100%

TOLD

	Takeoff	Target	Joker	Bingo	Land
FUEL	26553			5000	

AIRBASES

	Name	TCN	ATIS	GND	TWR	RWY	Elev	ILS
Dep	Akrotiri AFB	107X	288.2	240.1	339.85	28	62	109.7
Arr	Akrotiri AFB	107X	288.2	240.1	339.85	28	62	109.7
Div	Incirlik AFB	21X	$\frac{377.47}{5}$	371.35	360.1	5	190	

FLIGHTPLAN

#	Name	Navaid/Coords/DME	ALT	TOT
1	ECHO	N34 42.600 E033 10		
2	LAKE	N34 45.150 E032 55.400		
3	Akamas Bombing Range Entry (IP)	N35 09.519 E032 23.619		
4	Akamas T1	N35 04.371 E032 19.093		
5	Akamas T2	N35 04.371 E032 18.086		
6	Akamas T3	N35 04.737 E032 18.030		
7	Akamas T4	N35 04.971 E032 18.182		
8	Akamas T5	N35 05.038 E032 17.629		

NOTES

Set Holding on IP heading 215 hot leg 15 Nm

Dive aus A20: 5,0 nm mit 35 °AOD

Dive aus A10: 6,5 nm mit 15 °AOD

SUPPORT**Tanker**

Callsign	TCN	Freq	ALT	TAS
ARCO 1	22Y	319.8	FL222	400
	Pos	ARCO1: (N3701 E03457)		

AWACS

Callsign	Freq	ALT	Pos
OVERLORD2	377.8	FL320	N3713 E03643 - N3714 E03749

RADIO CHANNELS

#	Freq	Name
1		Flight/Squadron specific
2	288.2	Akrotiri ATIS
3	240.1	Akrotiri Ground
4	339.85	Aktrotiri Tower
5	335.05	Akrotiri Approach
6	360.1	Incirlik Tower
7	371.35	Incirlik Ground
8	377.475	Incirlik ATIS
9		No Preset
10	127.3	Paphos ATIS
11	353.8	Paphos Tower
12	304.0	CVN-73 George Washington
13	302.0	LHA-1 Tarawa
14	259.0	CV-59 Forrestal
15		No Preset
16	377.8	Overlord
17	265.0	KC-135 Texaco-1 medium/slow
18	319.8	KC-135 Arco-1
19	360.8	KC-135MPRS Arco-2
20	256.0	S-3B Recovery Tanker

RAMROD

0	1	2	3	4	5	6	7	8	9
U	N	D	E	R	P	L	A	Y	S

KTC 1400 C

	0	1	2	3	4	5	6	7	8	9
A	SQYJ	RED	PGL	HX	KU	FTC	AO	BW	IM	NV
B	BTJX	RQA	YFN	IL	GD	EKP	OS	UV	CW	HM
C	IVSY	NML	PET	OB	GR	UKH	JX	WF	QC	AD
D	WPSF	VYR	MGC	OL	AD	UTE	IQ	XB	NH	JK
E	KNJA	XBO	PGH	VD	YU	LEW	TQ	RC	IS	MF
F	JWIN	ARK	YCS	XU	EB	FQT	VP	MD	HO	GL
G	SIYB	EKH	OUN	CM	FP	ADV	WL	GQ	XT	RJ
H	MAIR	EBD	CTJ	KL	WO	UGQ	XH	NV	YF	PS
I	DEVA	HRS	IWF	UP	NC	BJX	KY	GM	QL	TO
J	MOFL	PYR	DAE	TX	CK	JUN	HI	QG	WB	VS
K	JESP	VCU	RYI	XG	TL	FAO	WH	QB	MK	DN
L	EAKB	NUS	FVX	CD	MJ	LTG	YO	HQ	IP	RW
M	PIKN	VSL	HUC	JQ	WR	TEX	GB	MF	OA	YD
N	NLVE	IMX	HWA	QY	DK	CJR	FO	ST	GU	PB
O	GBHT	SAK	DFM	WU	LO	CYX	QI	EP	VR	JN
P	SDHR	CJP	FKG	IQ	WU	NOB	MX	VL	TE	YA
Q	IGWN	TFU	BPO	RE	HX	QJS	YM	VA	DC	KL
R	YUQA	WPJ	GRH	BC	NS	FKD	OI	XM	LV	TE
S	SEAP	JUT	IGF	HD	CN	WVO	BK	LQ	RX	MY
T	GAHO	NKX	YIQ	SU	RT	DMJ	PL	WB	FC	VE
U	PGIT	SBO	QEC	DK	NW	HFA	JL	UM	YX	RV
V	FPMA	JQR	SCY	HO	EG	KLW	TU	ND	XI	VB
W	GBKC	OPQ	SRD	AH	YW	VFM	IN	UL	XT	JE
X	JVYQ	COM	GSL	AD	XN	BEP	UR	HW	FK	IT
Y	WNFL	YDG	IKX	SE	JB	VQP	RT	CM	OA	HU

NAVAIDS

Id	Name	Channel	Position	Elevation
DAN	Incirlik	21	N37 00.950 E035 26.883	243
AKR	Akrotiri	107	N34 34.765 E032 57.769	147
PHA	Paphos	79	N34 42.997 E032 28.963	35
RMD	Ramat David	84	N32 39.892 E035 11.265	136
OS66	Kuweires Military Aviation Institute	36	N36 11.362 E037 34.226	1200

**FOR DCS
 USE ONLY**



ATIS	AKROTIRI GND	AKROTIRI TWR	OVERLORD CONTROL	TACAN	FIELD ELEVATION
288.20 MHz	240.10 122.10	339.85 130.075	377.8	AKR 107X	75 [ft] 23 [m]

ATIS
 288.20
AKROTIRI GROUND
 240.10
AKROTIRI TOWER
 339.85
OVERLORD
 377.80

NOT FOR CIVIL USE

CAUTION: If unable to comply
 with restrictions advise ATC
 prior to departure.



ARR / DEP ROUTE DESCRIPTION

STRAIGHT-IN RWY28

Pass ENTRY at 5.000' MSL or below, pass INITIAL at 1.500' MSL or below.

OVERHEAD BREAK RWY28

Pass ENTRY at 5.000' MSL or below, pass INITIAL at 2.000' MSL, break to the south.

DEPARTURE GENERAL

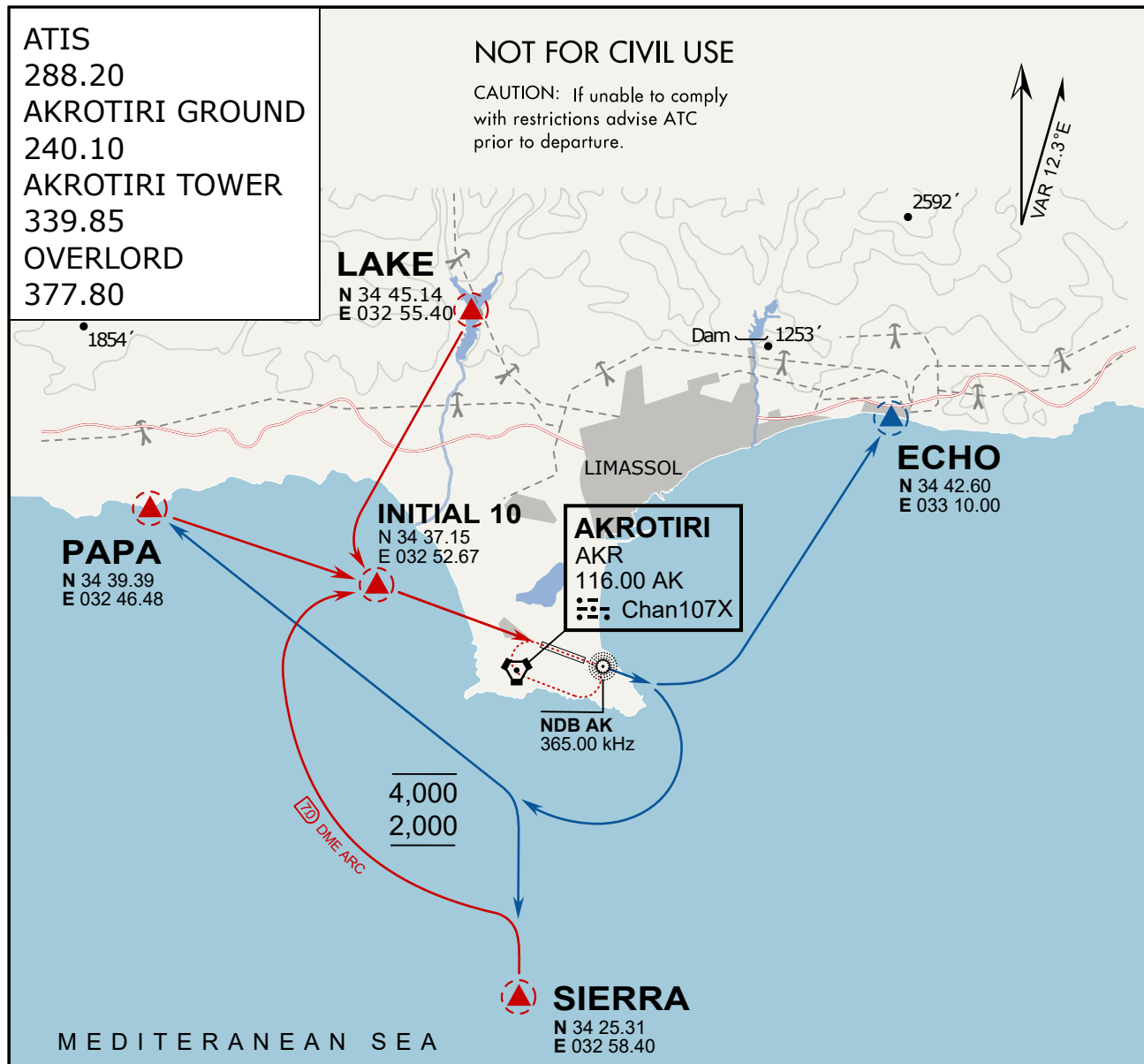
Pass Departure end of runway at 1.000' or below.

DEP RWY28 PAPA: Fly straight ahead to exit.

DEP RWY28 LAKE: Fly straight ahead until coast, than right turn direct exit.

DEP RWY28 SIERRA: Fly straight ahead until coastline, then climbing left turn, intercept AKR R-180 to exit.

DEP ECHO: no exit.



ARR / DEP ROUTE DESCRIPTION

ARRIVAL GENERAL

Pass Entry at 5.000' or below. Overhead Brake RWY 10: pass INITIAL 10 at 2.000' MSL.
Straight-in RWY 10 : pass INITIAL 1.500' or below.

ARR RWY10 PAPA / LAKE: Direct initial.

ARR RWY10 SIERRA: Intercept ARC 7 of AKR to INITIAL 10.

ARR ECHO: no ENTRY.

DEPARTURE GENERAL

Pass Departure end of runway at 1.000' AGL or below. Keep RWY heading until coastline.

DEP RWY10 ECHO: Direct EXIT.

DEP RWY10 SIERRA: Climbing right turn, intercept R180 AKR to Sierra.

DEP RWY10 PAPA: Climbing right turn until R180 AKR, then direct Papa

DEP LAKE: no EXIT.

ATIS
377.475 (#8)

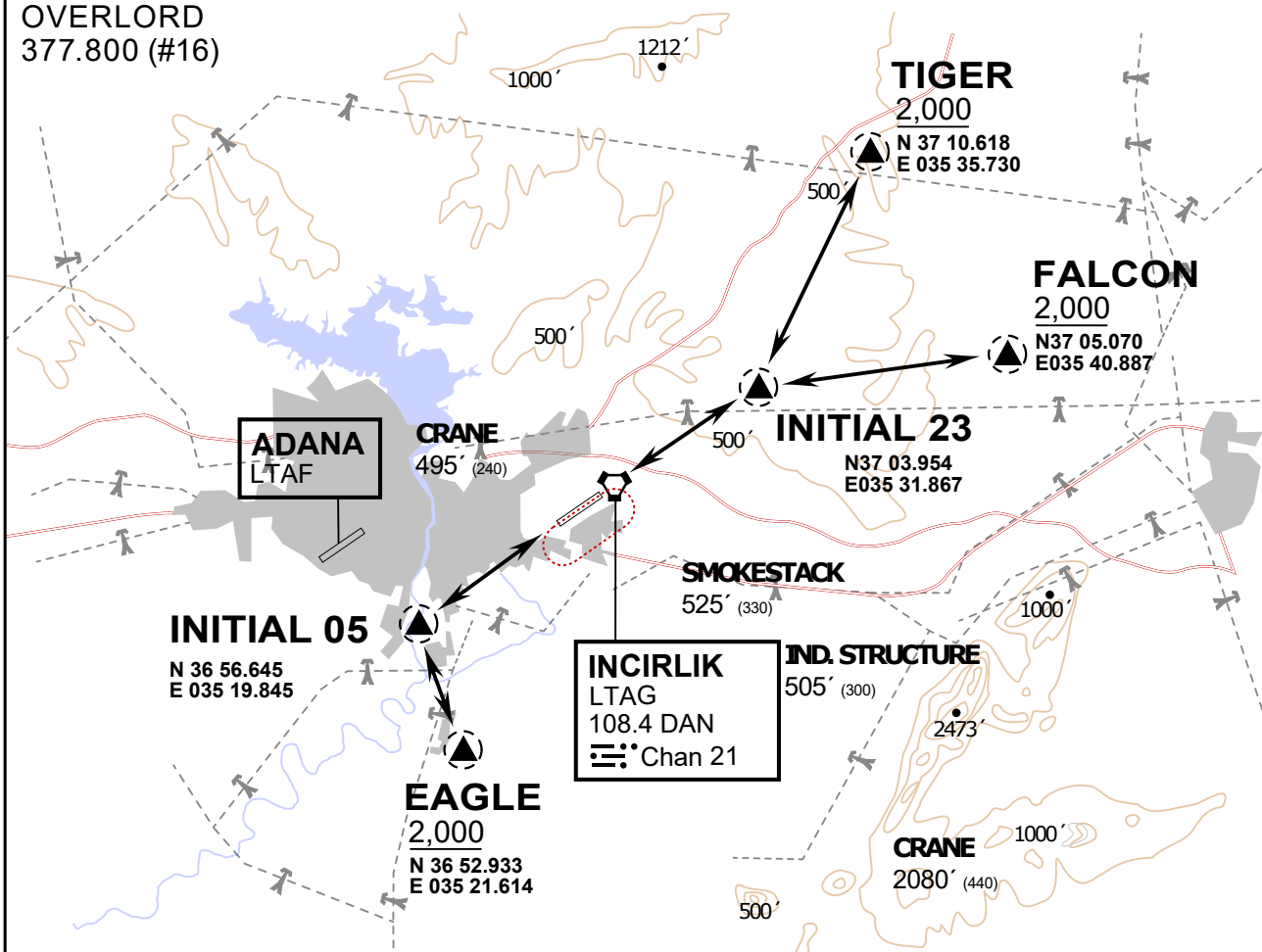
INCIRLIK GROUND
371.3500 (#7)

INCIRLIK TOWER
360.100 (#6)

OVERLORD
377.800 (#16)

NOT FOR CIVIL USE

CAUTION: If unable to comply with restrictions advise ATC prior to departure.



vJaBoG32 ETTR NAV CHART

ARR / DEP ROUTE DESCRIPTION

STRAIGHT-IN RWY 05 / 23

Pass entry EAGLE / TIGER / FALCON at 2000' and INITIAL at 1500'

OVERHEAD BREAK RWY 05 / 23

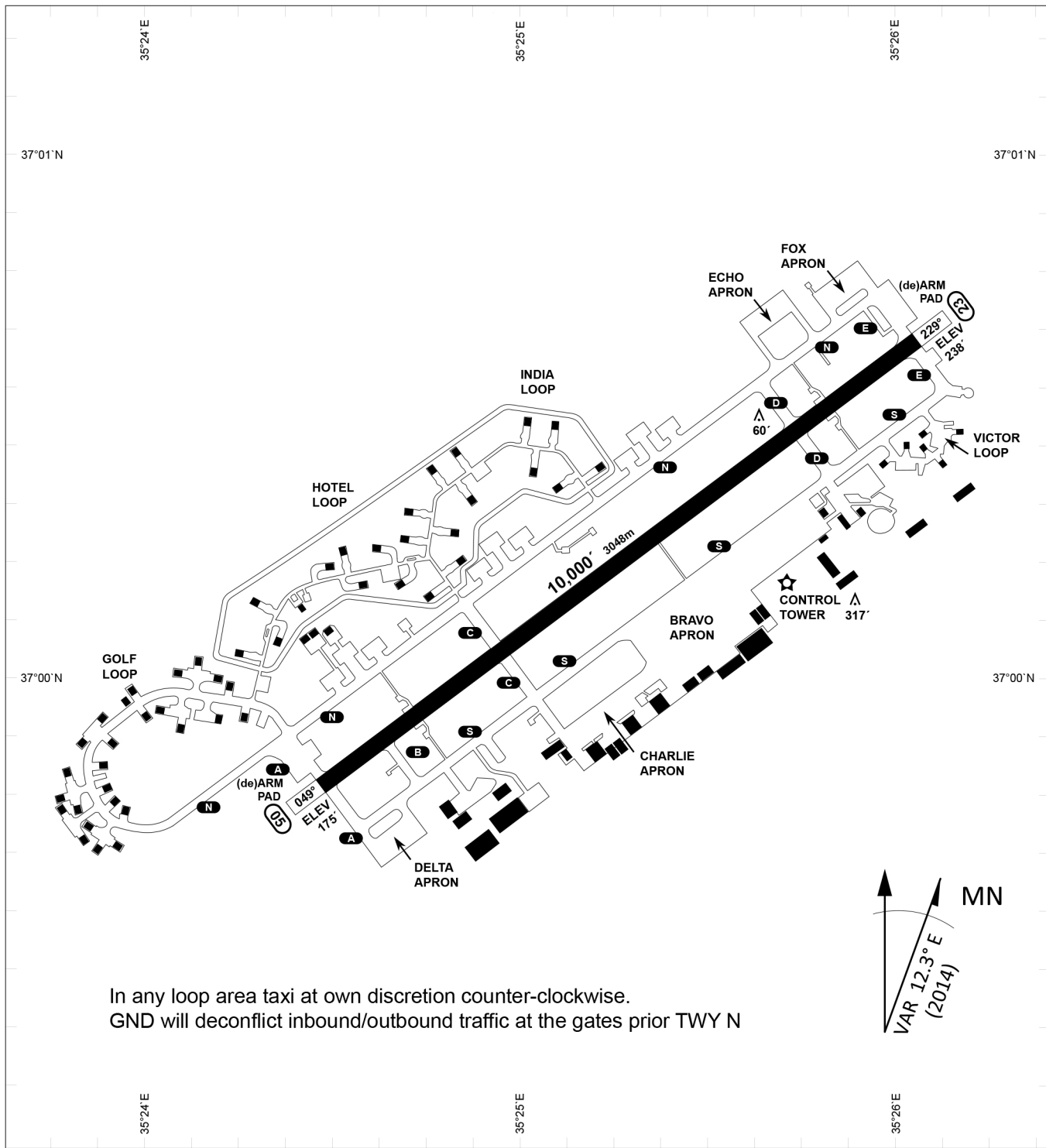
Pass entry EAGLE / TIGER / FALCON at 2500', pass INITIAL at 2000' break to the south at 2000' pattern altitude.

HELICOPTER ROUTES

Pass entry EAGLE / TIGER / FALCON at 1000' or below, pass INITIAL at 1000' break to the south at 1000' pattern altitude.

DEPARTURE ALL DIRECTIONS

pass DER below 1500ft



PAR	RWY	CAT	MINIMA	ARP	ELEV	Scale 1:35'500
	21L	A B D E	2057 - 0.8 200 (200-0.8/1.6) GS 3°	37°0'56.000" N 35°26'53.000" E	1857 [ft]	0 300 600 900 1200 1500 [m] 0 1000 2000 3000 4000 5000 [ft]
	3R	A B D E	2057 - 0.8 200 (200-0.8/1.6) GS 3°		566 [m]	
SRA	21R	A C D E	2257 - 1.2 350 (350-1.2/1.6)			
	3L	A C D E	2257 - 1.2 350 (350-1.2/1.6)			

RWY	TORA	TORA from D	TORA from B	COURSE	PSN THR	ALS
23	10,000 [ft] 3048 [m]	8,000 [ft] 2438 [m]		235°	37°00.611'N 035°26.368'E	⊙
05	10,000 [ft] 3048 [m]		9,000 [ft] 2743 [m]	055°	36°59.043'N 035°24.760'E	⊙

ATIS	INCIRLIK GROUND	INCIRLIK TOWER	CONTROL	TACAN	ILS RWY 05	ILS RWY 23
377.475	371.350 123.020	360.100 121.100	337.800	DAN21x	109.3MHz	111.7MHz