

MISSION DATA CARD

OPORD		Callsign		Mission		Date/Time		
3097/2024		Rattler 1		Training		292000JUL24		
Task						Freq		
AO						133.5		
Departure				Recovery				
HELICOPTER DEP				HELICOPTER ARR				
#	Callsign		Pilot		IFF	TCN	LSR	NET
-1	Rattler 1-1		Hudson/Remotex		4611	1Y	1251	

LOADOUT

A/A						GUN	
A/G						CHF	
POD						FLR	
TKS						FUEL	

TOLD

	Takeoff	Target	Joker	Bingo	Land
FUEL	2513	0			

AIRBASES

	Name	TCN	ATIS	GND	TWR	RWY	Elev	ILS
Dep	Nellis AFB	12X	270.1	275.8	327.0	21L	1850	109.1
Arr	Nellis AFB	12X	270.1	275.8	327.0	21L	1850	109.1

COMMS

Radio	Usage
1	133.50
2	327.0

RADIO CHANNELS

#	Freq	Name
1		Flight/Squadron specific
2	289.4	Nellis Clearance Delivery
3	275.8	Nellis Ground
4	327.0	Nellis Tower
5	385.4	Nellis Approach/Departure West
6	273.55	Nellis Approach/Departure East
7	317.525	Nellis Control -- Sally
8	254.4	Nellis Control-- Lee
9	305.6	SOF Bullseye
10	343.725	EMERGENCY SINGLE FRQ
11	270.1	Nellis ATIS
12	360.625	Creech AFB Tower
13	250.1	HAVE QUICK 13
14	251.1	HAVE QUICK 14
15	252.1	HAVE QUICK 15
16	377.8	Blackjack
17	265.0	KC-135 AR-641A
18	360.8	KC-135MPRS AR-635
19	319.8	KC-135MPRS AR-625
20	300.05	KC-135 AR-231V

RAMROD

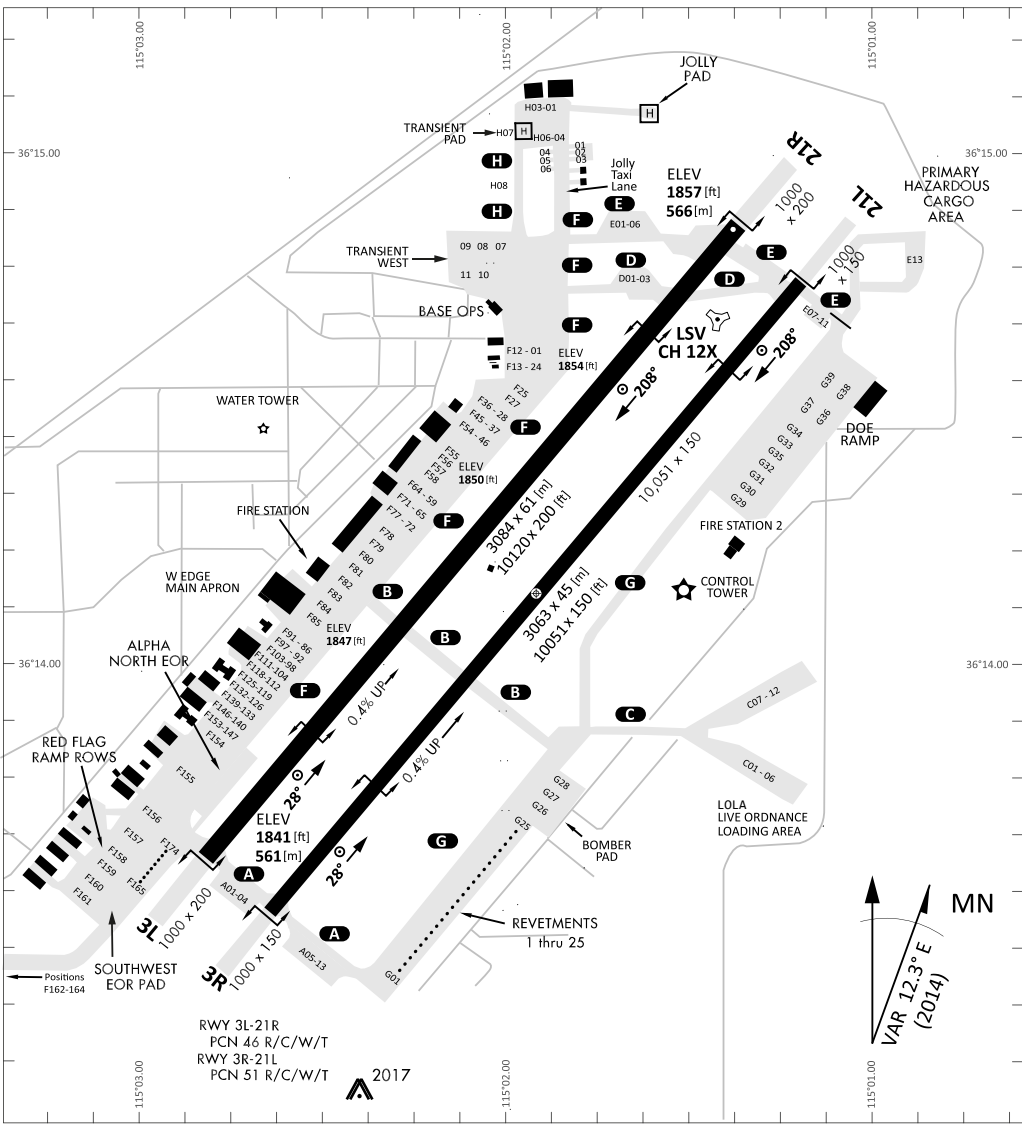
0	1	2	3	4	5	6	7	8	9
O	V	E	R	L	A	Y	I	N	G

KTC 1400 C

	0	1	2	3	4	5	6	7	8	9
A	HMVR	ELO	GDF	WB	KA	TQS	CJ	PY	UN	XI
B	EKUW	HVG	QNO	IX	TL	MAB	CD	JP	RY	FS
C	NGPQ	BEA	MXL	DV	CJ	WKO	SH	UF	IR	YT
D	FYTU	OEJ	WMD	SV	GI	BXQ	PR	AK	LC	HN
E	SFGQ	HXA	IJC	WV	UP	NOK	LR	YM	ET	DB
F	HPTK	FGU	JAI	NC	MD	QBY	OR	SX	WE	VL
G	DMTN	WCL	PXO	KU	RV	GBE	QI	AJ	HY	FS
H	EVLA	NFJ	TQO	UR	HP	BIG	MS	KC	XD	WY
I	HRPQ	XUE	YIS	LF	GM	CKD	TO	JN	VW	BA
J	VUPG	JEI	QRX	CY	WS	KAD	TF	BN	HM	LO
K	POGW	QXB	TUA	HJ	CL	EVM	KF	DN	YS	RI
L	QIUC	GLX	BFA	EO	SV	KMH	WN	TY	RJ	PD
M	KUAN	FXL	PGW	TS	QR	YDO	CJ	EH	VI	MB
N	BWAS	JUF	TOX	QD	RY	LNG	KI	HP	MV	EC
O	KRDC	BQF	PVU	OS	LY	GMX	AI	JH	TN	WE
P	UBMA	VND	CER	XL	KW	FGJ	PO	QT	YS	HI
Q	GITB	QNX	CYS	RU	EM	ODW	HF	VA	PL	JK
R	EDFM	QWC	YVT	IK	BH	ULO	XG	SR	JN	PA
S	WIPE	AKT	VXB	QN	SG	YJD	LF	UR	MO	HC
T	JHQY	AEB	LSD	MK	PC	OUT	GR	VW	NI	XF
U	HDJE	MKB	URP	FT	QV	WLX	NA	GY	SO	IC
V	XQTA	BFU	MWS	OC	PI	LRN	EK	GH	VD	JY
W	IPYD	CBX	SAM	HT	NU	WVG	JE	FK	QL	RO
X	BKNJ	EFW	LVH	OT	QD	APY	SR	UG	CI	MX
Y	RJLT	UHW	CAV	FK	MS	QIY	OD	GB	XP	EN

NAVAIDS

Id	Name	Channel	Position	Elevation
BCE	Bryce Canyon	75	N3741.35 W11218.23	9040
BIH	Bishop	33	N3722.62 W11821.99	4114
BLD	Boulder	114	N3559.75 W11451.82	3650
BTY	Beatty	94	N3648.54 W11644.86	2925
CDC	Cedar City	120	N3747.24 W11304.90	5463
DAG	Daggett	79	N3457.75 W11634.69	1760
EED	Needles	99	N3445.96 W11428.43	650
GFS	Goffs	91	N3507.87 W11510.59	4019
GRL	Groom Lake	18	N3713.91 W11548.16	4475
HEC	Hector	74	N3447.83 W11627.78	1854
ILC	Wilson Creek	110	N3815.02 W11423.65	9318
INS	Creech AFB	87	N3635.20 W11540.12	3101
LAS	McCarran Intl	116	N3604.78 W11509.59	2142
LSV	Nellis	12	N3614.68 W11501.50	1864
MLF	Milford	58	N3821.62 W11300.79	4977
MMM	Mormon Mesa	90	N3646.16 W11416.65	2120
MVA	Mina	98	N3833.92 W11801.97	7860
OAL	Coale Dale	124	N3800.20 W11746.23	4800
PGS	Peach Springs	57	N3537.48 W11332.67	4754
TPH	Tonopah Muni	119	N3801.84 W11702.01	5330
TQQ	Silverbow	77	N3748.00 W11647.00	5500
UTI	St George	23	N3705.29 W11335.53	2871



RWY 3L-21R
 PCN 46 R/C/W/T
 RWY 3R-21L
 PCN 51 R/C/W/T
 2017

PAR	RWY	CAT	MINIMA		ARP	ELEV	Scale 1:35'500	
	21L	A B D E	2057 - 0.8 200	(200-0.8/1.6) GS 3°	36° 14.060° N 115° 01.058° W	1857 [ft] 566 [m]	0	300
	3R	A B D E	2057 - 0.8 200	(200-0.8/1.6) GS 3°			0	1000
	21R	A C D E	2257 - 1.2 350	(350-1.2/1.6)			0	2000
	3L	A C D E	2257 - 1.2 350	(350-1.2/1.6)			0	3000
							0	4000
							0	5000

RWY	TORA	TODA	ASDA	LDA	PSN	THR	ALS
21L	10051 [ft] 3063 [m]	11051 [ft] 3368 [m]	11051 [ft] 3368 [m]	10051 [ft] 3063 [m]	36°14.043' N	115°01.018' W	⊕
3R	10120 [ft] 3084 [m]	11120 [ft] 3398 [m]	11120 [ft] 3398 [m]	10120 [ft] 3084 [m]	36°13.029' N	115°02.038' W	

ATIS	NELLIS GROUND	NELLIS TOWER	NELLIS CONTROL	TACAN	ILS RWY 21L	NELLIS EAST	NELLIS WEST
270.100 MHz	275.800 121.800	327.000 132.55	317.525	LSV 12X	109.10 Mhz	384.400	385.000

HELICOPTER ARR/DEP VAD-CHART | VALID 2014

NELLIS AFB (KLSV)
LAS VEGAS, NEVADA

ATIS
270.100
NELLIS GROUND
275.800
NELLIS TOWER
327.000
BLACKJACK
377.800

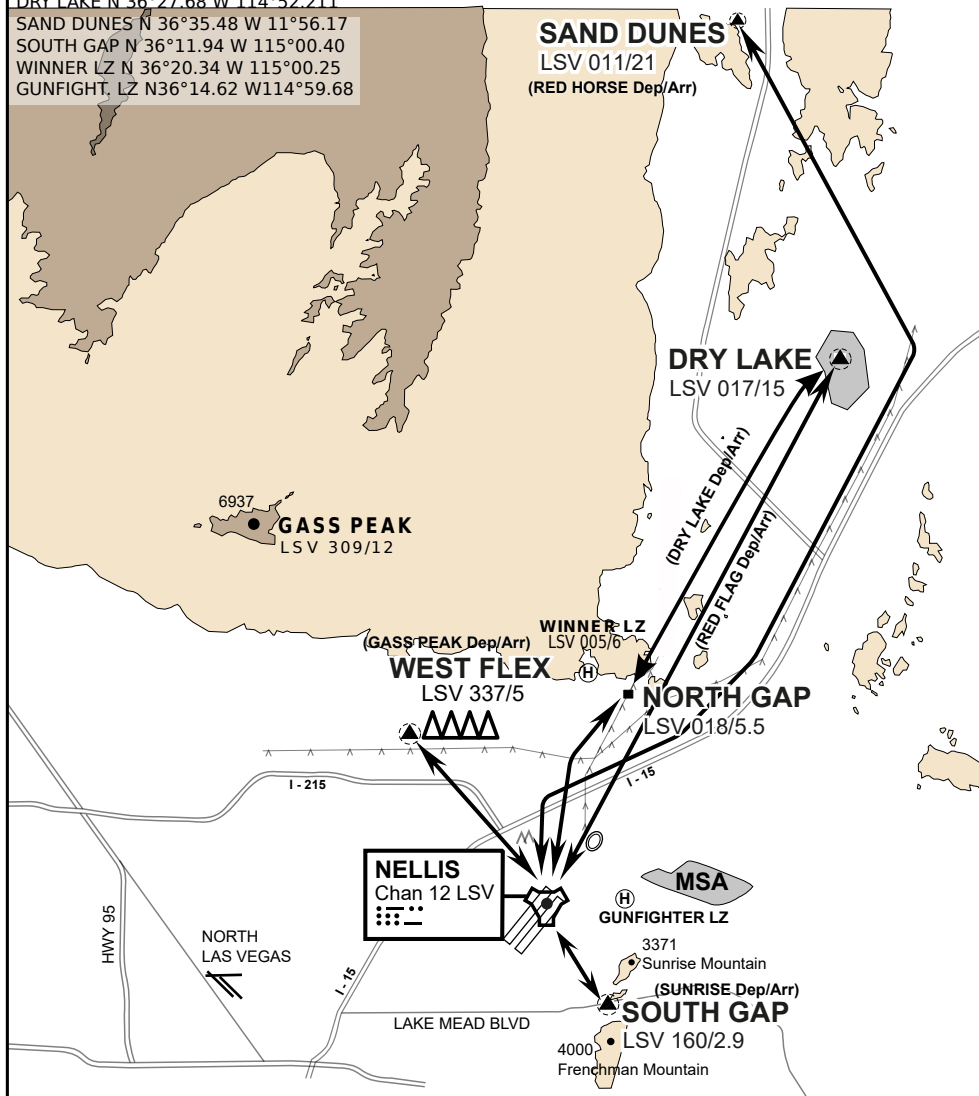
CAUTION: If unable to comply
with restrictions advise ATC
prior to departure.

VMC ONLY

if below WX Minima request SVFR



JOLLY PAD N 36°15.08 W 115°01.65
WEST FLEX N 36°18.64 W 115°08.00
NORTH GAP N 36°20.00 W 114°59.30
DRY LAKE N 36°27.68 W 114°52.211
SAND DUNES N 36°35.48 W 11°56.17
SOUTH GAP N 36°11.94 W 115°00.40
WINNER LZ N 36°20.34 W 115°00.25
GUNFIGHT, LZ N36°14.62 W114°59.68



vJABeG32NTRR NAV CHART

HELICOPTER ARRIVAL AND DEPARTURES ROUTES

v.110 22APR20

HELICOPTER ARR/DEP VAD-CHART | VALID 2014

NELLIS AFB (KLSV)
LAS VEGAS, NEVADA

ATIS
270.100
NELLIS GROUND
275.800
NELLIS TOWER
327.000
BLACKJACK
377.800

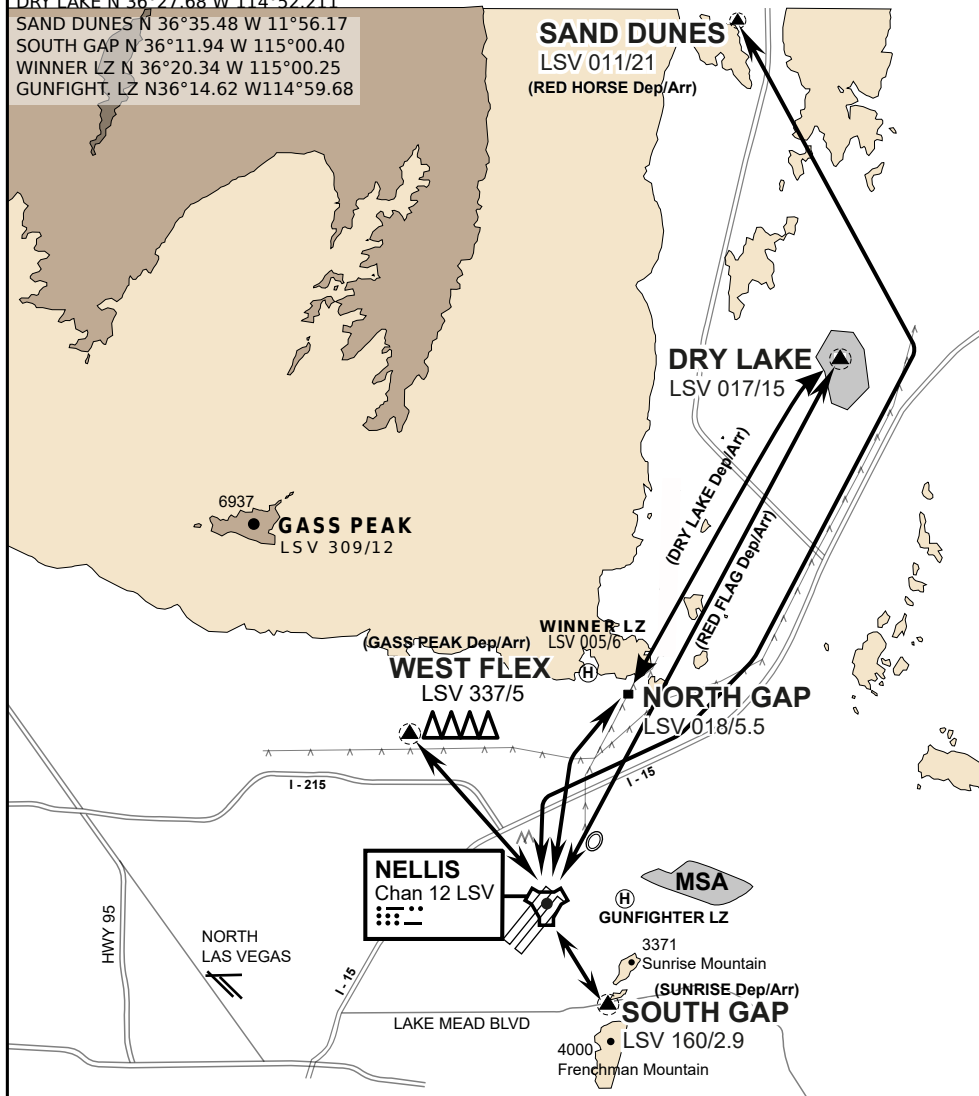
CAUTION: If unable to comply
with restrictions advise ATC
prior to departure.

VMC ONLY

if below WX Minima request SVFR



JOLLY PAD N 36°15.08 W 115°01.65
WEST FLEX N 36°18.64 W 115°08.00
NORTH GAP N 36°20.00 W 114°59.30
DRY LAKE N 36°27.68 W 114°52.211
SAND DUNES N 36°35.48 W 11°56.17
SOUTH GAP N 36°11.94 W 115°00.40
WINNER LZ N 36°20.34 W 115°00.25
GUNFIGHT, LZ N36°14.62 W114°59.68



vJABeG32NTRR NAV CHART

HELICOPTER ARRIVAL AND DEPARTURES ROUTES

v.110 22APR20