

MISSION DATA CARD

OPORD		Callsign		Mission		Date/Time	
3095/2024		Nazgul 6		Strike		292000JUL24	
Task	Safe Escape Training					Freq	
AO	Northern Syria					262.45	
Departure				Recovery			
RWY28 VFR				RWY10 VFR			
#	Callsign	Pilot	IFF	TCN	LSR	NET	
-1	Nazgul 6-1	Striver/Uta	1161	1Y	1561		
-2	Nazgul 6-2	Tank/TaB	1162	64Y	1562		
-3	Nazgul 6-3	Repsus/Lempo	1163	64X	1563		
-4	Nazgul 6-4	Razorback	1164	1X	1564		

LOADOUT

A/A	2xA9M, 2xA120C			GUN	100% SAPHEI
A/G	12xM82			CHF	120
POD	TGT, NAV			FLR	60
TKS	FT610			FUEL	100%

TOLD

	Takeoff	Target	Joker	Bingo	Land
FUEL	26553			5000	

AIRBASES

	Name	TCN	ATIS	GND	TWR	RWY	Elev	ILS
Dep	Akrotiri AFB	107X	288.2	240.1	339.85	28	62	109.7
Arr	Akrotiri AFB	107X	288.2	240.1	339.85	28	62	109.7
Div	Incirlik AFB	21X	377.47 5	371.35	360.1	5	190	

FLIGHTPLAN

#	Name	Navaid/Coords/DME	ALT	TOT
1	ECHO	N34 42.600 E033 10		
2	LAKE	N34 45.150 E032 55.400		
3	Akamas Bombing Range Entry (IP)	N35 09.519 E032 23.619		
4	Akamas T1	N35 04.371 E032 19.093		
5	Akamas T2	N35 04.371 E032 18.086		
6	Akamas T3	N35 04.737 E032 18.030		
7	Akamas T4	N35 04.971 E032 18.182		
8	Akamas T5	N35 05.038 E032 17.629		

NOTES

Set Holding on IP heading 215 hot leg 10 Nm

SUPPORT**Tanker**

Callsign	TCN	Freq	ALT	TAS
ARCO 1	22Y	319.8	FL222	400
	Pos	ARCO1: (N3701 E03457)		

AWACS

Callsign	Freq	ALT	Pos
OVERLORD2	377.8	FL320	N3713 E03643 - N3714 E03749

OTHER FLIGHTS

Callsign	Mission	Airframe	Freq	TCN	Grpld	Laser
Edelweiss 6	Training	1x A-10C	132.25	1/64	35	166X
AO		Task	AAR			

RADIO CHANNELS

#	Freq	Name
1		Flight/Squadron specific
2	288.2	Akrotiri ATIS
3	240.1	Akrotiri Ground
4	339.85	Aktrotiri Tower
5	335.05	Akrotiri Approach
6	360.1	Incirlik Tower
7	371.35	Incirlik Ground
8	377.475	Incirlik ATIS
9		No Preset
10	127.3	Paphos ATIS
11	353.8	Paphos Tower
12	304.0	CVN-73 George Washington
13	302.0	LHA-1 Tarawa
14	259.0	CV-59 Forrestal
15		No Preset
16	377.8	Overlord
17	265.0	KC-135 Texaco-1 medium/slow
18	319.8	KC-135 Arco-1
19	360.8	KC-135MPRS Arco-2
20	256.0	S-3B Recovery Tanker

RAMROD

0	1	2	3	4	5	6	7	8	9
O	V	E	R	L	A	Y	I	N	G

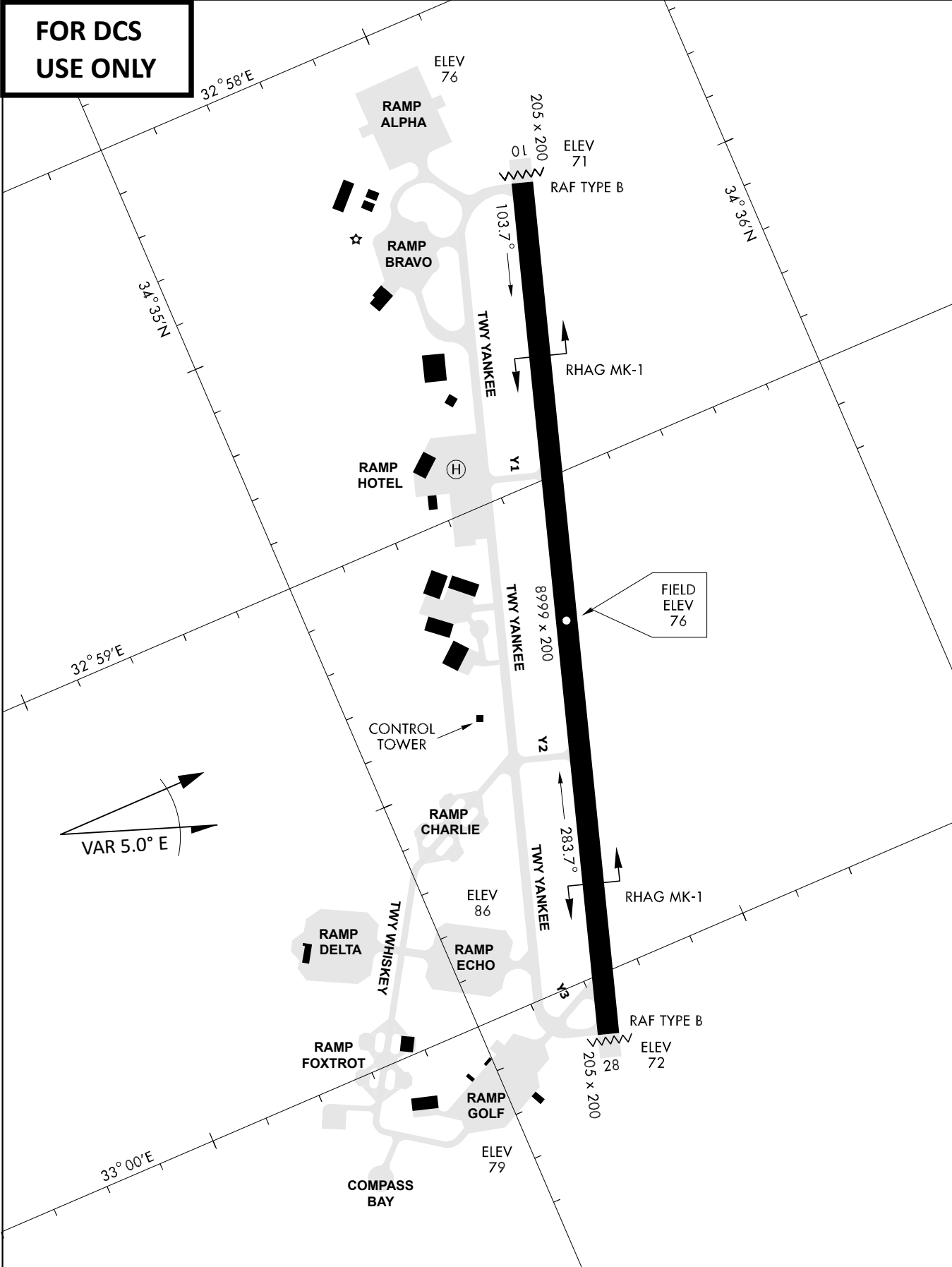
KTC 1400 C

	0	1	2	3	4	5	6	7	8	9
A	HMVR	ELO	GDF	WB	KA	TQS	CJ	PY	UN	XI
B	EKUW	HVG	QNO	IX	TL	MAB	CD	JP	RY	FS
C	NGPQ	BEA	MXL	DV	CJ	WKO	SH	UF	IR	YT
D	FYTU	OEJ	WMD	SV	GI	BXQ	PR	AK	LC	HN
E	SFGQ	HXA	IJC	WV	UP	NOK	LR	YM	ET	DB
F	HPTK	FGU	JAI	NC	MD	QBY	OR	SX	WE	VL
G	DMTN	WCL	PXO	KU	RV	GBE	QI	AJ	HY	FS
H	EVLA	NFJ	TQO	UR	HP	BIG	MS	KC	XD	WY
I	HRPQ	XUE	YIS	LF	GM	CKD	TO	JN	VW	BA
J	VUPG	JEI	QRX	CY	WS	KAD	TF	BN	HM	LO
K	POGW	QXB	TUA	HJ	CL	EVM	KF	DN	YS	RI
L	QIUC	GLX	BFA	EO	SV	KMH	WN	TY	RJ	PD
M	KUAN	FXL	PGW	TS	QR	YDO	CJ	EH	VI	MB
N	BWAS	JUF	TOX	QD	RY	LNG	KI	HP	MV	EC
O	KRDC	BQF	PVU	OS	LY	GMX	AI	JH	TN	WE
P	UBMA	VND	CER	XL	KW	FGJ	PO	QT	YS	HI
Q	GITB	QNX	CYS	RU	EM	ODW	HF	VA	PL	JK
R	EDFM	QWC	YVT	IK	BH	ULO	XG	SR	JN	PA
S	WIPE	AKT	VXB	QN	SG	YJD	LF	UR	MO	HC
T	JHQY	AEB	LSD	MK	PC	OUT	GR	VW	NI	XF
U	HDJE	MKB	URP	FT	QV	WLX	NA	GY	SO	IC
V	XQTA	BFU	MWS	OC	PI	LRN	EK	GH	VD	JY
W	IPYD	CBX	SAM	HT	NU	WVG	JE	FK	QL	RO
X	BKNJ	EFW	LVH	OT	QD	APY	SR	UG	CI	MX
Y	RJLT	UHW	CAV	FK	MS	QIY	OD	GB	XP	EN

NAVAIDS

Id	Name	Channel	Position	Elevation
DAN	Incirlik	21	N37 00.950 E035 26.883	243
AKR	Akrotiri	107	N34 34.765 E032 57.769	147
PHA	Paphos	79	N34 42.997 E032 28.963	35
RMD	Ramat David	84	N32 39.892 E035 11.265	136
OS66	Kuweires Military Aviation Institute	36	N36 11.362 E037 34.226	1200

**FOR DCS
 USE ONLY**

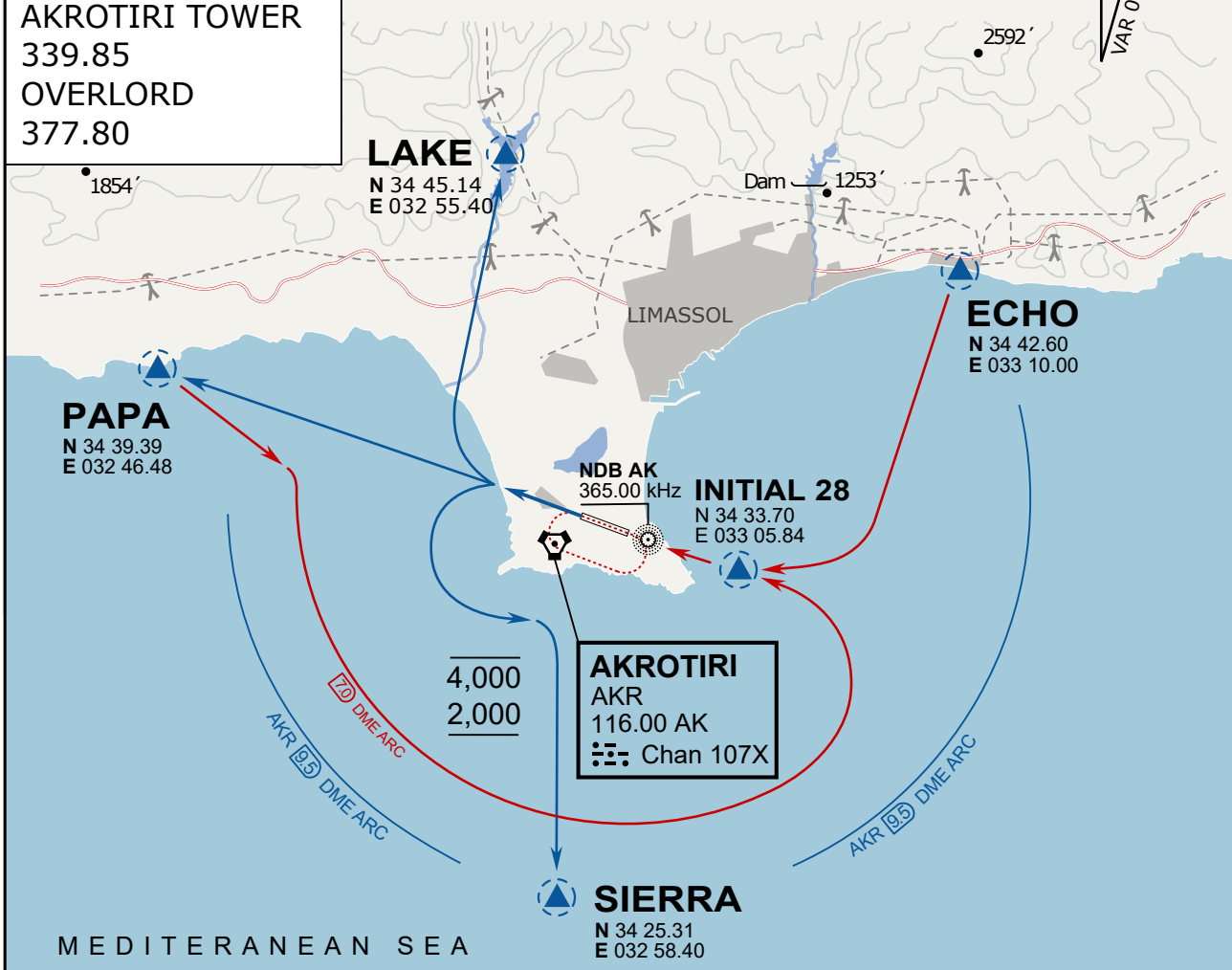


ATIS	AKROTIRI GND	AKROTIRI TWR	OVERLORD CONTROL	TACAN	FIELD ELEVATION
288.20 MHz	240.10 122.10	339.85 130.075	377.8	AKR 107X	75 [ft] 23 [m]

ATIS
 288.20
AKROTIRI GROUND
 240.10
AKROTIRI TOWER
 339.85
OVERLORD
 377.80

NOT FOR CIVIL USE

CAUTION: If unable to comply with restrictions advise ATC prior to departure.



ARR / DEP ROUTE DESCRIPTION

STRAIGHT-IN RWY28

Pass ENTRY at 5.000' MSL or below, pass INITIAL at 1.500' MSL or below.

OVERHEAD BREAK RWY28

Pass ENTRY at 5.000' MSL or below, pass INITIAL at 2.000' MSL, break to the south.

DEPARTURE GENERAL

Pass Departure end of runway at 1.000' or below.

DEP RWY28 PAPA: Fly straight ahead to exit.

DEP RWY28 LAKE: Fly straight ahead until coast, than right turn direct exit.

DEP RWY28 SIERRA: Fly straight ahead until coastline, then climbing left turn, intercept AKR R-180 to exit.

DEP ECHO: no exit.

ATIS

288.20

AKROTIRI GROUND

240.10

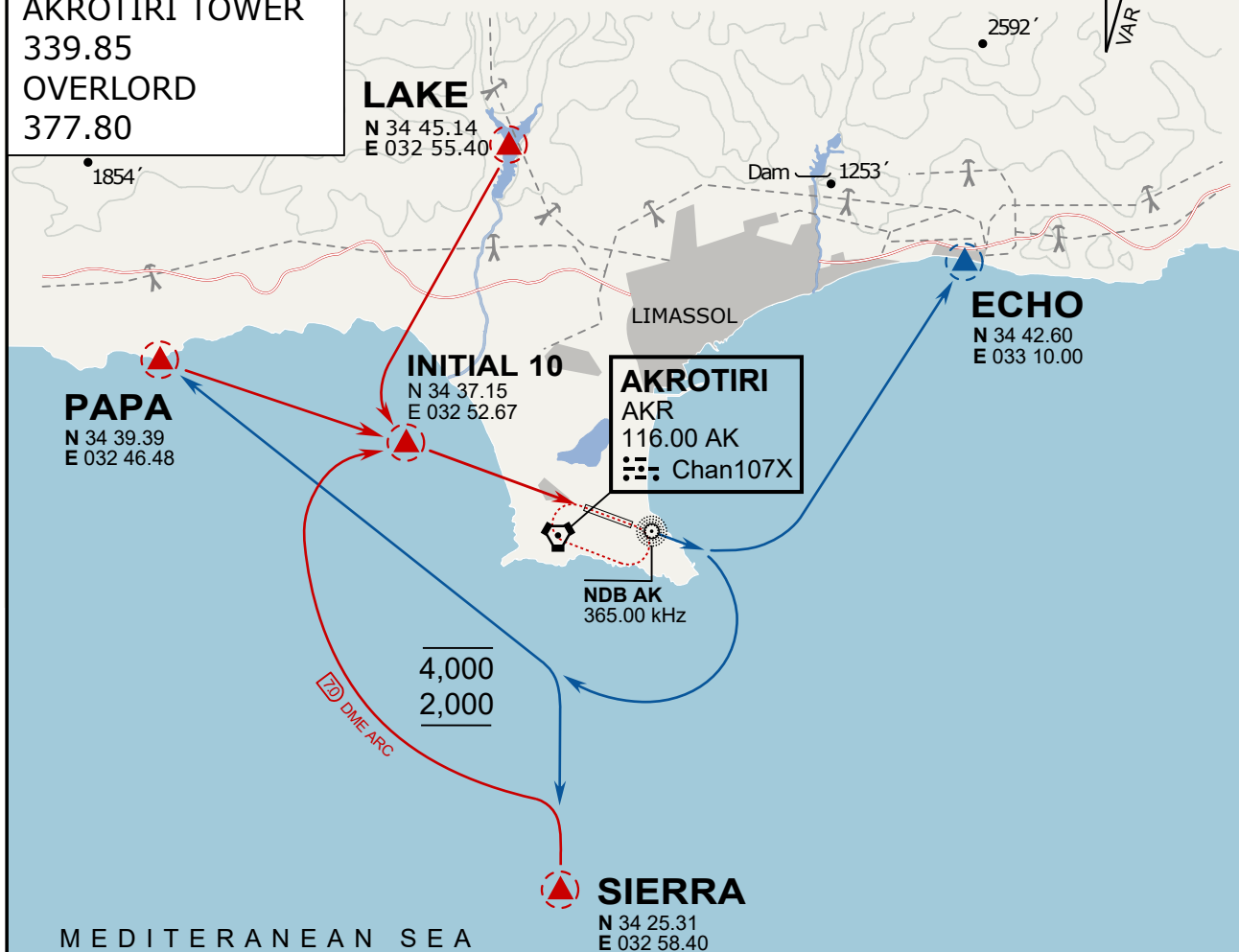
AKROTIRI TOWER

339.85

OVERLORD

377.80

NOT FOR CIVIL USE

CAUTION: If unable to comply
with restrictions advise ATC
prior to departure.

ARR / DEP ROUTE DESCRIPTION

ARRIVAL GENERAL

Pass Entry at 5.000' or below. Overhead Brake RWY 10: pass INITIAL 10 at 2.000' MSL.
Straight-in RWY 10 : pass INITIAL 1.500' or below.

ARR RWY10 PAPA / LAKE: Direct initial.

ARR RWY10 SIERRA: Intercept ARC 7 of AKR to INITIAL 10.

ARR ECHO: no ENTRY.

DEPARTURE GENERAL

Pass Departure end of runway at 1.000' AGL or below. Keep RWY heading until coastline.

DEP RWY10 ECHO: Direct EXIT.

DEP RWY10 SIERRA: Climbing right turn, intercept R180 AKR to Sierra.

DEP RWY10 PAPA: Climbing right turn until R180 AKR, then direct Papa

DEP LAKE: no EXIT.

ATIS
377.475 (#8)

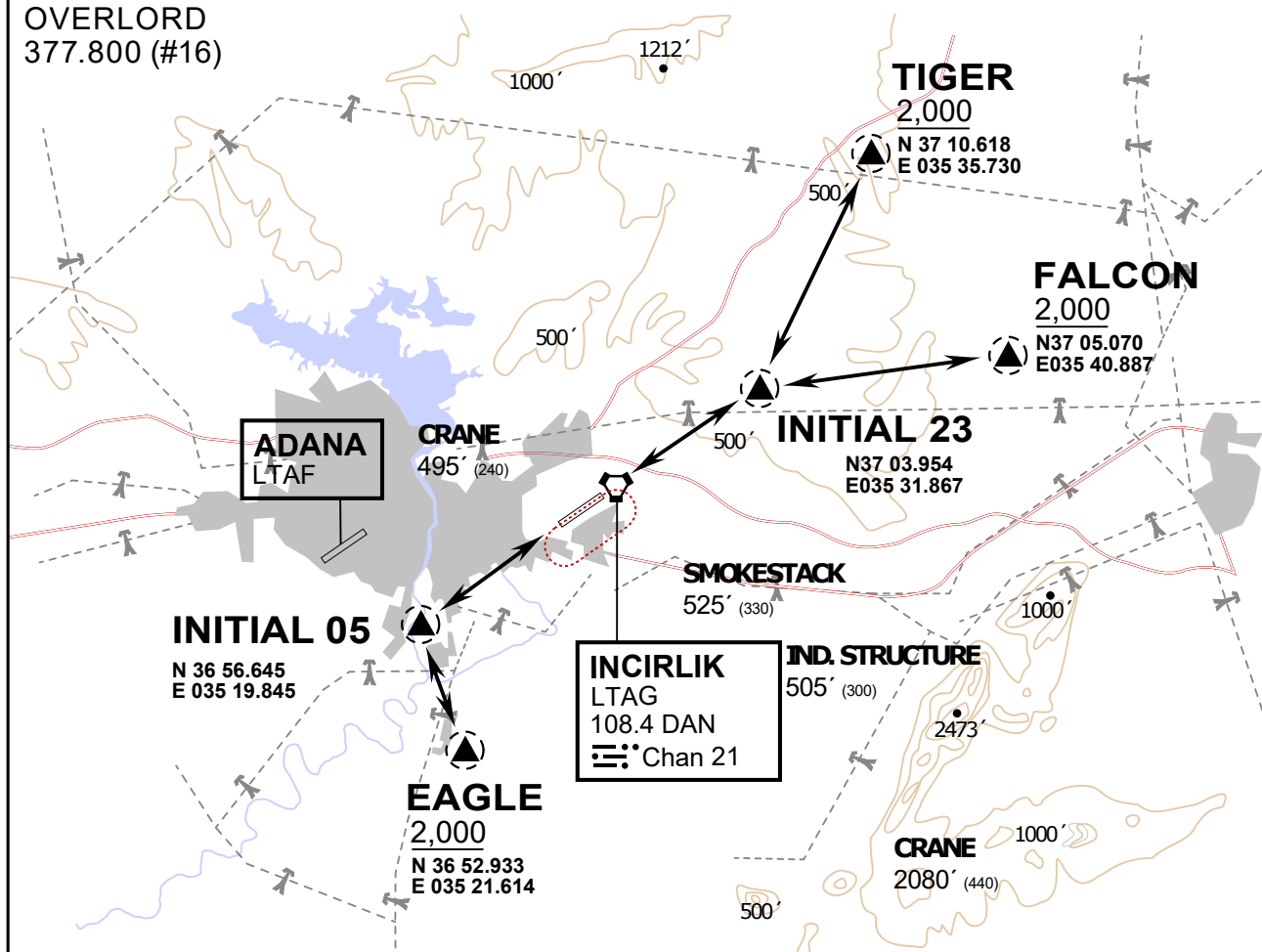
INCIRLIK GROUND
371.3500 (#7)

INCIRLIK TOWER
360.100 (#6)

OVERLORD
377.800 (#16)

NOT FOR CIVIL USE

CAUTION: If unable to comply
with restrictions advise ATC
prior to departure.



ARR / DEP ROUTE DESCRIPTION

STRAIGHT-IN RWY 05 / 23

Pass entry EAGLE / TIGER / FALCON at 2000' and INITIAL at 1500'

OVERHEAD BREAK RWY 05 / 23

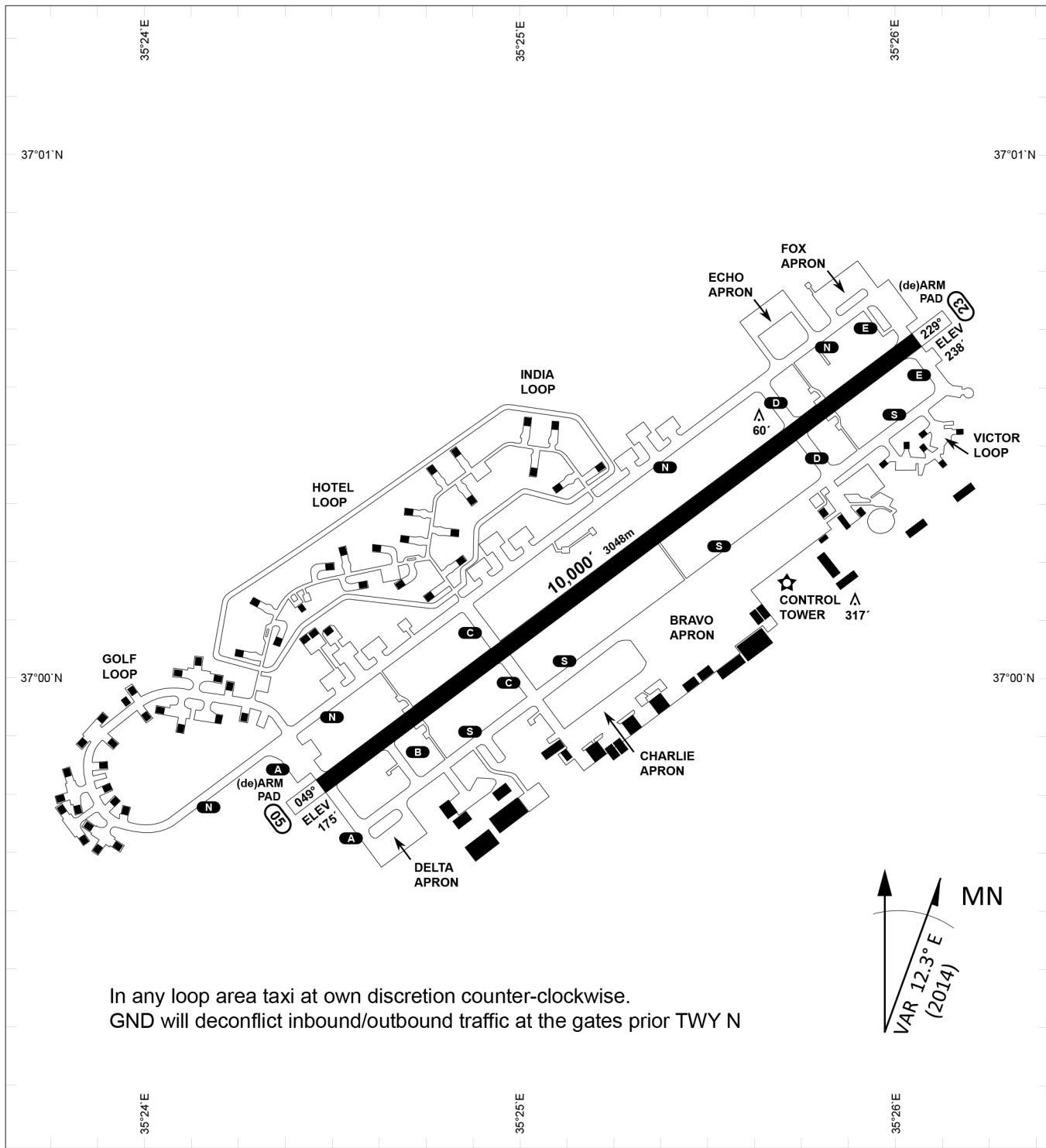
Pass entry EAGLE / TIGER / FALCON at 2500',
pass INITIAL at 2000' break to the south at 2000' pattern altitude.

HELICOPTER ROUTES

Pass entry EAGLE / TIGER / FALCON at 1000' or below, pass INITIAL at 1000' break to the south at 1000' pattern altitude.

DEPARTURE ALL DIRECTIONS

pass DER below 1500ft



PAR	RWY	CAT	MINIMA	ARP	ELEV	Scale 1:35'500
	21L	A B D E	2057 - 0.8 200 (200-0.8/1.6) GS 3°	37°0'56.000" N 35°26'53.000" E	1857 [ft]	0 300 600 900 1200 1500 [m] 0 1000 2000 3000 4000 5000 [ft]
	3R	A B D E	2057 - 0.8 200 (200-0.8/1.6) GS 3°		566 [m]	
SRA	21R	A C D E	2257 - 1.2 350 (350-1.2/1.6)			
	3L	A C D E	2257 - 1.2 350 (350-1.2/1.6)			

RWY	TORA	TORA from D	TORA from B	COURSE	PSN THR	ALS
23	10,000 [ft] 3048 [m]	8,000 [ft] 2438 [m]		235°	37°00.611'N 035°26.368'E	⊙
05	10,000 [ft] 3048 [m]		9,000 [ft] 2743 [m]	055°	36°59.043'N 035°24.760'E	⊙

ATIS	INCIRLIK GROUND	INCIRLIK TOWER	CONTROL	TACAN	ILS RWY 05	ILS RWY 23
377.475	371.350 123.020	360.100 121.100	337.800	DAN21x	109.3MHz	111.7MHz