

**MISSION DATA CARD**

OPORD	Callsign	Mission	Date/Time			
3093/2024	Raptor 1	Training	281422JUL24			
Task						Freq
AO						134.0
Departure			Recovery			
RWY28 SID			RWY28 VFR			
#	Callsign	Pilot	IFF	TCN	LSR	NET
-1	Raptor 1-1	Jinx	1611	1Y	1621	

**LOADOUT**

A/A					GUN	
A/G					CHF	
POD					FLR	
TKS					FUEL	

**TOLD**

	Takeoff	Target	Joker	Bingo	Land
FUEL	7163				

**AIRBASES**

	Name	TCN	ATIS	GND	TWR	RWY	Elev	ILS
Dep	Akrotiri AFB	107X	288.2	240.1	339.85	28	62	109.7
Arr	Akrotiri AFB	107X	288.2	240.1	339.85	28	62	109.7

**FLIGHTPLAN**

#	Name	Navaid/Coords/DME	ALT	TOT
1	ECHO	N34 42.600 E033 10	5000	
2	PAPA	N34 39.390 E032 46.480	5000	

**SUPPORT****Tanker**

Callsign	TCN	Freq	ALT	TAS
ARCO 1	22Y	319.8	FL222	400
	Pos	ARCO1: (N3701 E03457)		
SHELL 3	93Y	278.75	FL170	215
	Pos	SHELL3: (N3436 E03419)		

**RADIO CHANNELS**

#	Freq	Name
1		Flight/Squadron specific
2	288.2	Akrotiri ATIS
3	240.1	Akrotiri Ground
4	339.85	Aktrotiri Tower
5	335.05	Akrotiri Approach
6	360.1	Incirlik Tower
7	371.35	Incirlik Ground
8	377.475	Incirlik ATIS
9		No Preset
10	127.3	Paphos ATIS
11	353.8	Paphos Tower
12	304.0	CVN-73 George Washington
13	302.0	LHA-1 Tarawa
14	259.0	CV-59 Forrestal
15		No Preset
16	377.8	Overlord
17	265.0	KC-135 Texaco-1 medium/slow
18	319.8	KC-135 Arco-1
19	360.8	KC-135MPRS Arco-2
20	256.0	S-3B Recovery Tanker

**RAMROD**

0	1	2	3	4	5	6	7	8	9
P	U	R	C	H	A	S	I	N	G

**KTC 1400 C**

	0	1	2	3	4	5	6	7	8	9
A	WSKC	VUR	HNI	EX	AF	GDL	OJ	QY	TB	MP
B	PJUG	VFW	LXB	CE	NI	MYK	TH	DQ	OR	AS
C	EVJW	BNK	XHR	PC	DG	STA	YF	MU	LI	QO
D	TSJW	KBI	COF	XR	YA	VNG	HD	PU	QL	ME
E	DBGF	TMN	ERA	LK	UY	WHI	JO	SQ	VP	CX
F	KARP	LHE	UYQ	TI	SF	VOB	DN	JG	XM	CW
G	VMSO	GAW	YDC	XP	BK	LTQ	UI	RN	EF	JH
H	GKDR	PJW	BSX	OY	TQ	ALI	HM	FN	EC	VU
I	UMGT	HLP	IRE	DC	SW	NVA	BQ	XY	KF	OJ
J	QJNU	OFT	LWH	KV	MI	ECG	PA	SR	XY	BD
K	JKHP	LAW	SME	GV	NQ	IXB	UO	TR	CD	YF
L	JVUB	AFQ	WHS	OD	RN	KLM	PI	ET	YG	CX
M	WTJK	BGY	IVP	DR	EL	SFO	XH	QN	AC	UM
N	AGXC	FSR	JKU	EW	QT	PNB	MI	YH	DV	OL
O	JWKG	FVU	YRH	DP	LC	QXI	AB	NE	TS	OM
P	SBPV	RKO	UGT	IL	YA	EMX	FN	CH	JW	QD
Q	IRKJ	OTC	AGS	PW	BD	VUX	NL	HF	YM	QE
R	GKNB	IOD	WQU	LP	EJ	VYC	MT	AH	RX	FS
S	FXCJ	VLD	TMG	NB	IW	URE	YO	HQ	KS	AP
T	XANT	BLU	RJC	MH	PE	SFI	KV	YG	OD	WQ
U	YPUW	CMI	AEK	XL	GQ	TVN	JF	DR	SO	HB
V	YHGD	MSC	NAL	UI	WK	JRX	VF	EO	TB	QP
W	VTXS	KLG	FYU	ID	JH	BOR	WA	NM	PQ	CE
X	YXEL	OAK	IJB	VG	US	NMQ	FC	TW	DH	RP
Y	OTMF	UEI	QDX	VP	CB	GHJ	LK	WS	RN	YA

**NAVAIDS**

<b>Id</b>	<b>Name</b>	<b>Channel</b>	<b>Position</b>	<b>Elevation</b>
DAN	Incirlik	21	N37 00.950 E035 26.883	243
AKR	Akrotiri	107	N34 34.765 E032 57.769	147
PHA	Paphos	79	N34 42.997 E032 28.963	35
RMD	Ramat David	84	N32 39.892 E035 11.265	136
OS66	Kuweires Military Aviation Institute	36	N36 11.362 E037 34.226	1200

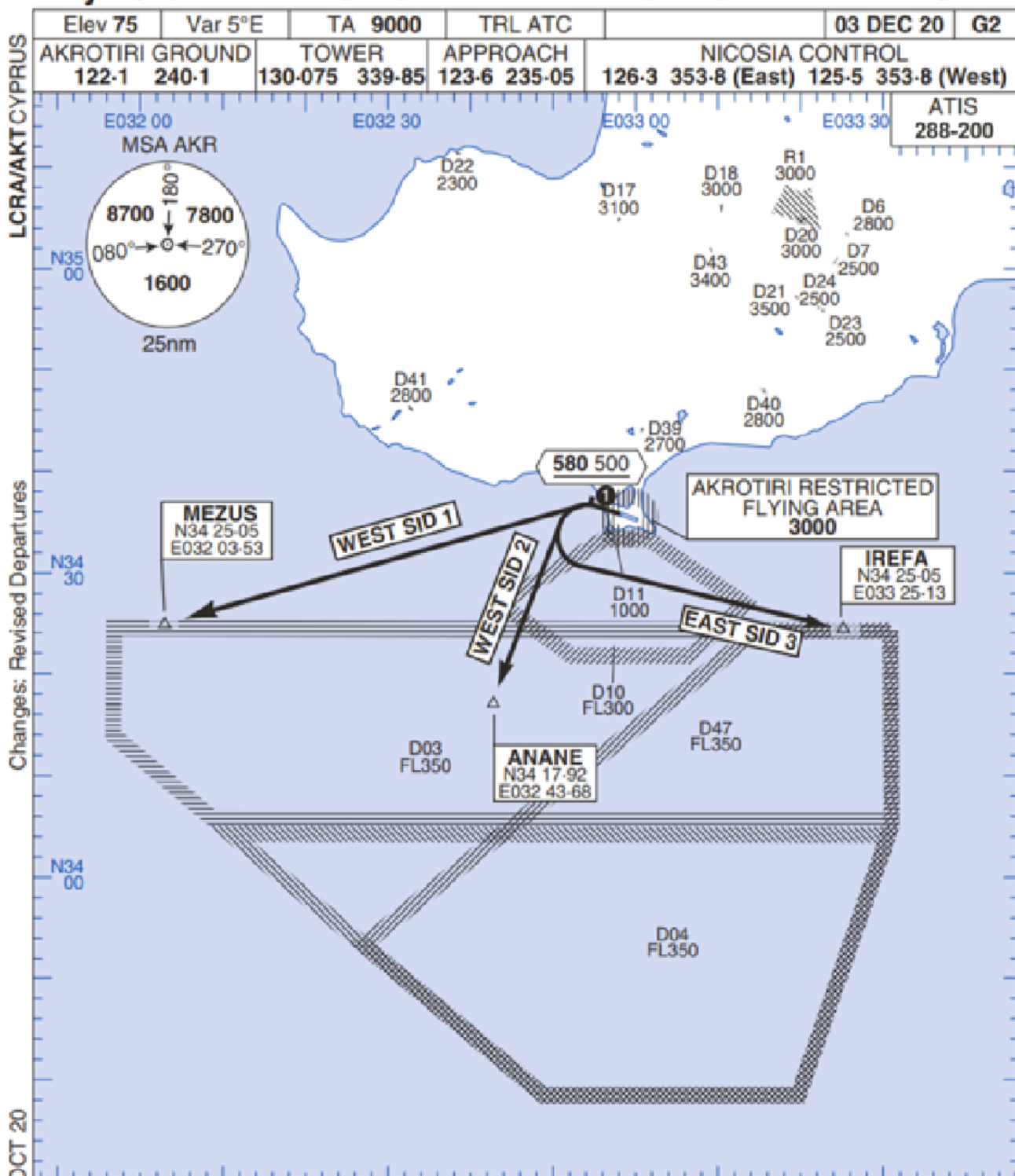
**FOR DCS  
 USE ONLY**



ATIS	AKROTIRI GND	AKROTIRI TWR	OVERLORD CONTROL	TACAN	FIELD ELEVATION
288.20 MHz	240.10   122.10	339.85   130.075	377.8	AKR 107X	<b>75 [ft] 23 [m]</b>

# Rwy 28 OMNIDIRECTIONAL DEPARTURES

# AKROTIRI



Changes: Revised Departures

No1 AIDU Last Amended 06 OCT 20

© UK MOD Crown Copyright 2020. No1 AIDU is not responsible for, and claims no right to, the content or accuracy of 3rd party documents/information.

- 1. Minimum climb gradient 7% to 580 500 for obstacle and operational purposes.
- 2. No turns before DER.
- 3. Turns to north of Rwy prohibited.
- 4. Aclt unable to locate MEZUS/ANANE/IREFA should request radar vectors from ATC.

SID	RWY	ROUTEING (Including Mnm Noise Routes)
WEST SID 1	28 283°M	Ahead on Rwy Tr to 580 500, turn left direct to MEZUS. SID terminates at 9000.
WEST SID 2		Ahead on Rwy Tr to 580 500, turn left direct to ANANE. SID terminates at 9000.
EAST SID 3		Ahead on Rwy Tr to 580 500, turn left direct to IREFA. SID terminates at 9000.



**ATIS**  
 288.20  
**AKROTIRI GROUND**  
 240.10  
**AKROTIRI TOWER**  
 339.85  
**OVERLORD**  
 377.80

### NOT FOR CIVIL USE

CAUTION: If unable to comply  
 with restrictions advise ATC  
 prior to departure.



### ARR / DEP ROUTE DESCRIPTION

#### STRAIGHT-IN RWY28

Pass ENTRY at 5.000' MSL or below, pass INITIAL at 1.500' MSL or below.

#### OVERHEAD BREAK RWY28

Pass ENTRY at 5.000' MSL or below, pass INITIAL at 2.000' MSL, break to the south.

#### DEPARTURE GENERAL

Pass Departure end of runway at 1.000' or below.

DEP RWY28 PAPA: Fly straight ahead to exit.

DEP RWY28 LAKE: Fly straight ahead until coast, than right turn direct exit.

DEP RWY28 SIERRA: Fly straight ahead until coastline, then climbing left turn, intercept AKR R-180 to exit.

DEP ECHO: no exit.