

MISSION DATA CARD

OPORD		Callsign		Mission		Date/Time		
3089/2024		Edelweiss 1		Training		242243JUL24		
Task						Freq		
AO						264.15		
Departure				Recovery				
RWY10 VFR				RWY28 VFR				
#	Callsign		Pilot		IFF	TCN	LSR	NET
-1	Edelweiss 1-1		Snowbird		1711	1Y	1711	
-2	Edelweiss 1-2		Remotex		1712	64Y	1712	

LOADOUT

A/A	2xA120C, 2xA9X					GUN	100% HEI-T
A/G	4xG38					CHF	60
POD	HTS, TGP					FLR	60
TKS	2xFT300					FUEL	100%

TOLD

	Takeoff	Target	Joker	Bingo	Land
FUEL	11169				

AIRBASES

	Name	TCN	ATIS	GND	TWR	RWY	Elev	ILS
Dep	Akrotiri AFB	107X	288.2	240.1	339.85	28	62	109.7
Arr	Akrotiri AFB	107X	288.2	240.1	339.85	28	62	109.7

FLIGHTPLAN

#	Name	Navaid/Coords/DME	ALT	TOT
1	PAPA	N34 39.390 E032 46.480	5000	
2	IP	N34 50.056 E033 52.965	5000	
3	TGT	N34 56.924 E033 51.867	177	
4	ECHO	N34 42.600 E033 10	5000	

SUPPORT**Tanker**

Callsign	TCN	Freq	ALT	TAS
ARCO 1	22Y	319.8	FL222	400
	Pos	ARCO1: (N3701 E03457)		
SHELL 3	93Y	278.75	FL170	215
	Pos	SHELL3: (N3436 E03419)		

RADIO CHANNELS

#	Freq	Name
1		Flight/Squadron specific
2	288.2	Akrotiri ATIS
3	240.1	Akrotiri Ground
4	339.85	Aktrotiri Tower
5	335.05	Akrotiri Approach
6	360.1	Incirlik Tower
7	371.35	Incirlik Ground
8	377.475	Incirlik ATIS
9		No Preset
10	127.3	Paphos ATIS
11	353.8	Paphos Tower
12	304.0	CVN-73 George Washington
13	302.0	LHA-1 Tarawa
14	259.0	CV-59 Forrestal
15		No Preset
16	377.8	Overlord
17	265.0	KC-135 Texaco-1 medium/slow
18	319.8	KC-135 Arco-1
19	360.8	KC-135MPRS Arco-2
20	256.0	S-3B Recovery Tanker

RAMROD										
0	1	2	3	4	5	6	7	8	9	
C	U	L	M	I	N	A	T	E	S	
KTC 1400 C										
	0	1	2	3	4	5	6	7	8	9
A	UAKT	ENX	WLD	MV	GY	JIB	PF	CR	OS	HQ
B	AJQU	EIH	OMR	PV	XC	YGL	KD	WS	NB	FT
C	EJWQ	DTF	CSY	NG	LB	VAU	OX	PM	RH	KI
D	JXMC	SVL	RBE	DG	OK	HWP	IN	TA	FY	QU
E	WDXC	SVT	HKR	EB	YP	LJF	NM	QA	OI	GU
F	TJOS	CEV	DNX	FK	GP	UBR	IL	AW	MH	YQ
G	WNKX	JRD	HQS	BF	GC	VTU	PM	IL	EA	OY
H	DIKM	XGN	RBH	OT	VP	LUW	AJ	CS	EQ	FY
I	QNVD	MUX	CYG	TE	RP	KHO	FS	WL	AB	JI
J	DKTA	GPS	NQB	CE	XI	VRF	ML	UY	HW	OJ
K	QOIJ	YKH	VWS	DT	RG	XLB	MP	CA	EF	NU
L	TEYK	NLB	DAI	CO	QW	VFP	JS	RX	GU	MH
M	QLEN	ICB	UXP	MS	WT	YDV	AK	RJ	GF	HO
N	OBEJ	KDC	HTU	VX	GY	FIR	LQ	NS	PA	WM
O	MTPN	BYK	ADX	WE	OH	RLS	QG	UI	CF	JV
P	SNTO	CAW	FIL	QJ	VU	EBX	RG	HM	PY	DK
Q	GYXK	QOV	CNU	TL	FH	AWS	EM	JI	PR	BD
R	NUOT	QPE	FXC	MD	RI	BSG	AH	LY	VW	KJ
S	CNDY	VGB	QJI	KE	PM	TUF	XH	RS	WA	OL
T	AIXP	ENS	BYV	WD	TC	MLK	HR	JQ	GF	UO
U	VHWU	INS	CLF	DA	MB	GOY	TQ	XP	RK	EJ
V	HQRG	PTJ	LNF	XM	KS	CUY	OD	WA	BI	VE
W	EBST	MOG	HJR	FP	VY	XWD	AC	LN	KI	QU
X	KNQJ	LYF	SAW	CG	BT	MRP	HE	UV	XD	OI
Y	EAMG	SJR	FVB	KL	DT	QHC	UI	PY	NW	XO

NAVAIDS

Id	Name	Channel	Position	Elevation
DAN	Incirlik	21	N37 00.950 E035 26.883	243
AKR	Akrotiri	107	N34 34.765 E032 57.769	147
PHA	Paphos	79	N34 42.997 E032 28.963	35
RMD	Ramat David	84	N32 39.892 E035 11.265	136
OS66	Kuweires Military Aviation Institute	36	N36 11.362 E037 34.226	1200

**FOR DCS
 USE ONLY**



ATIS	AKROTIRI GND	AKROTIRI TWR	OVERLORD CONTROL	TACAN	FIELD ELEVATION
288.20 MHz	240.10 122.10	339.85 130.075	377.8	AKR 107X	75 [ft] 23 [m]

ATIS
 288.20
 AKROTIRI GROUND
 240.10
 AKROTIRI TOWER
 339.85
 OVERLORD
 377.80

NOT FOR CIVIL USE

CAUTION: If unable to comply with restrictions advise ATC prior to departure.



LAKE

N 34 45.14
E 032 55.40

Dam 1253'

2592'

1854'

LIMASSOL

ECHO

N 34 42.60
E 033 10.00

INITIAL 10

N 34 37.15
E 032 52.67

AKROTIRI

AKR

116.00 AK

Chan107X

NDB AK
365.00 kHz

PAPA

N 34 39.39
E 032 46.48

4,000
2,000

DME ARC



SIERRA

N 34 25.31
E 032 58.40

MEDITERRANEAN SEA

ARR / DEP ROUTE DESCRIPTION

ARRIVAL GENERAL

Pass Entry at 5.000' or below. Overhead Brake RWY 10: pass INITIAL 10 at 2.000' MSL. Straight-in RWY 10 : pass INITIAL 1.500' or below.

ARR RWY10 PAPA / LAKE: Direct initial.

ARR RWY10 SIERRA: Intercept ARC 7 of AKR to INITIAL 10.

ARR ECHO: no ENTRY.

DEPARTURE GENERAL

Pass Departure end of runway at 1.000' AGL or below. Keep RWY heading until coastline.

DEP RWY10 ECHO: Direct EXIT.

DEP RWY10 SIERRA: Climbing right turn, intercept R180 AKR to Sierra.

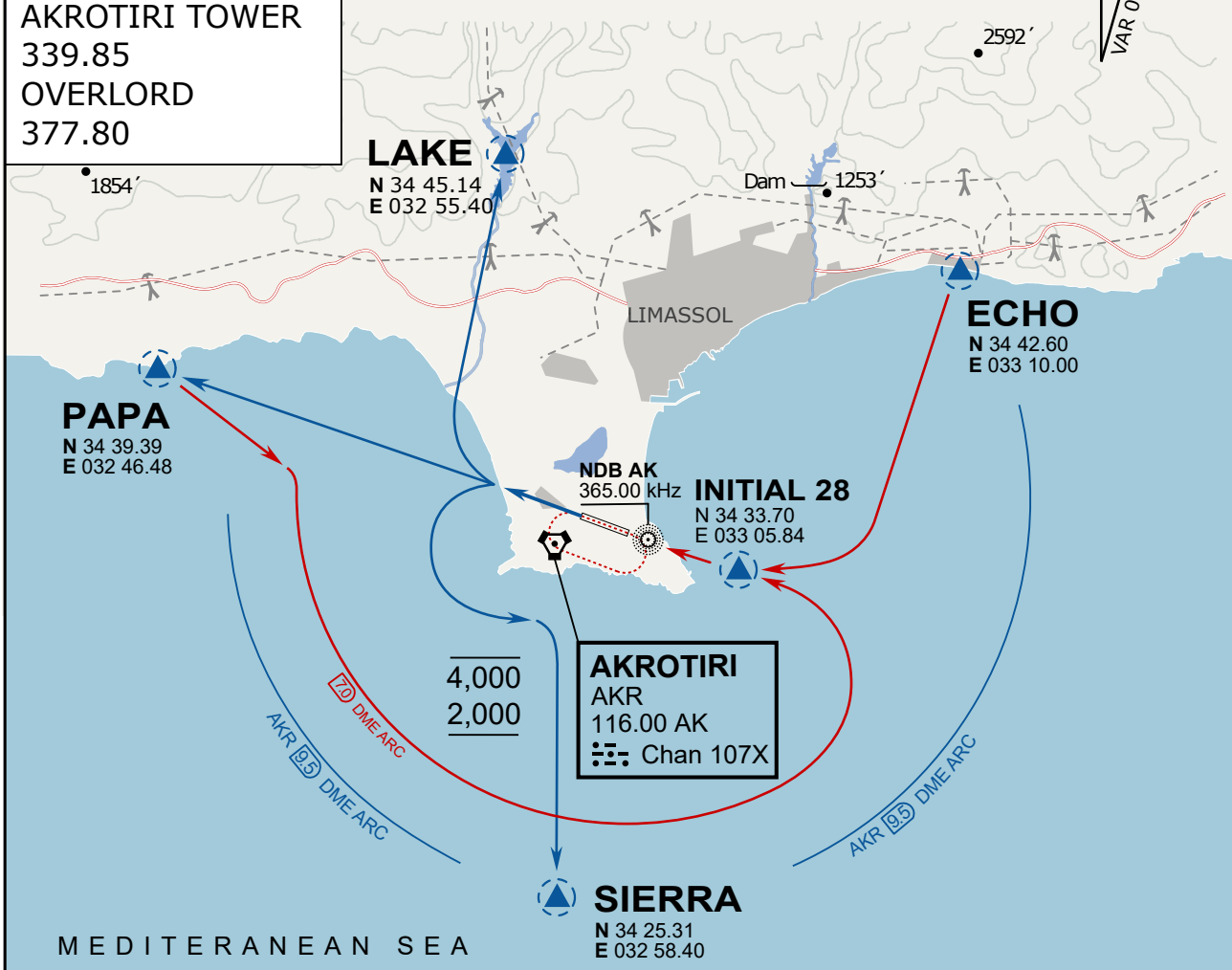
DEP RWY10 PAPA: Climbing right turn until R180 AKR, then direct Papa

DEP LAKE: no EXIT.

ATIS
 288.20
AKROTIRI GROUND
 240.10
AKROTIRI TOWER
 339.85
OVERLORD
 377.80

NOT FOR CIVIL USE

CAUTION: If unable to comply
 with restrictions advise ATC
 prior to departure.



ARR / DEP ROUTE DESCRIPTION

STRAIGHT-IN RWY28

Pass ENTRY at 5.000' MSL or below, pass INITIAL at 1.500' MSL or below.

OVERHEAD BREAK RWY28

Pass ENTRY at 5.000' MSL or below, pass INITIAL at 2.000' MSL, break to the south.

DEPARTURE GENERAL

Pass Departure end of runway at 1.000' or below.

DEP RWY28 PAPA: Fly straight ahead to exit.

DEP RWY28 LAKE: Fly straight ahead until coast, than right turn direct exit.

DEP RWY28 SIERRA: Fly straight ahead until coastline, then climbing left turn, intercept AKR R-180 to exit.

DEP ECHO: no exit.