

MISSION DATA CARD

OPORD		Callsign		Mission		Date/Time	
3087/2024		Nazgul 6		CAP		222000JUL24	
Task	BVR Maneuver Training					Freq	
AO	ETTR					262.45	
Departure				Recovery			
RWY10 VFR				ILS 28			
#	Callsign	Pilot	IFF	TCN	LSR	NET	
-1	Nazgul 6-1	Repsus/Uta	1161	1Y	1561		
-2	Nazgul 6-2	TaB	1162	64Y	1562		
-2	Nazgul 6-2	TaB	1162	64Y	1562		
-3	Nazgul 6-3	Razorback	1163	64X	1563		

LOADOUT

A/A	6xA120C, 2xA9M			GUN	100% SAPHEI
A/G				CHF	120
POD	TGT, NAV			FLR	60
TKS	2xFT610			FUEL	100%

TOLD

	Takeoff	Target	Joker	Bingo	Land
FUEL	30518				

AIRBASES

	Name	TCN	ATIS	GND	TWR	RWY	Elev	ILS
Dep	Akrotiri AFB	107X	288.2	240.1	339.85	28	62	109.7
Arr	Akrotiri AFB	107X	288.2	240.1	339.85	28	62	109.7
Div	Incirlik AFB	21X	377.47 5	371.35	360.1	5	190	

FLIGHTPLAN

#	Name	Navaid/Coords/DME	ALT	TOT
1	ECHO	N34 42.600 E033 10	10000	
2	LAKE	N34 45.150 E032 55.400	5000	
3	CAP 1	N35 05 E034 25	35000	
4	CAP 2	N34 05 E034 25	35000	
5	NFZ N	N35 59 E035 29	35000	
6	NFZ S	N33 20 E035	35000	
7	Shore S	N33 41 E035 26	0	
8	Shore Mid	N34 35 E035 59	0	
9	Shore N	N36 09 E035 53	0	
10	IREFA	N34 25.328 E033 26.664	3000	

COMMS

Radio	Usage
1	01
2	04 / 16 / 04

NOTES

===SEQUENCE===

0800J

ATIS : RW10, QNH 29.82

T/O AKR Dep via ECHO

SET TCN 72X

MIL PWR CLMB to A35

CAP 1 - HOT 090 - 15nm - A35 - M.8 - LH - split EL

RTB AKR Rec via ILS IREFA

===RADIO===

NAZGUL 6 - CH01

BALROG 7 - CH02

AKR TWR - CH04

CVN72 - CH07 - TCN72X

OVERLORD1 - CH16 (on station 0812J)

ARCO1 - CH17 (on station 0824J)

===ROE - weapons hold===

- aggressive maneuvering

- STT

- distance to CG 40nm

- west WP5->6

SUPPORT**Tanker**

Callsign	TCN	Freq	ALT	TAS
ARCO 1	22Y	319.8	FL222	400
	Pos	ARCO1: (N3701 E03457)		

AWACS

Callsign	Freq	ALT	Pos
OVERLORD2	377.8	FL320	N3713 E03643 - N3714 E03749

RADIO CHANNELS

#	Freq	Name
1		Flight/Squadron specific
2	288.2	Akrotiri ATIS
3	240.1	Akrotiri Ground
4	339.85	Aktrotiri Tower
5	335.05	Akrotiri Approach
6	360.1	Incirlik Tower
7	371.35	Incirlik Ground
8	377.475	Incirlik ATIS
9		No Preset
10	127.3	Paphos ATIS
11	353.8	Paphos Tower
12	304.0	CVN-73 George Washington
13	302.0	LHA-1 Tarawa
14	259.0	CV-59 Forrestal
15		No Preset
16	377.8	Overlord
17	265.0	KC-135 Texaco-1 medium/slow
18	319.8	KC-135 Arco-1
19	360.8	KC-135MPRS Arco-2
20	256.0	S-3B Recovery Tanker

RAMROD

0	1	2	3	4	5	6	7	8	9
C	O	N	F	U	S	E	D	L	Y

KTC 1400 C

	0	1	2	3	4	5	6	7	8	9
A	RXMJ	PAO	VWH	UI	DN	SCT	YG	FB	KL	QE
B	LFHQ	RGE	INT	SX	KU	BYJ	PA	CW	MD	VO
C	JFPI	THB	DWA	LK	GM	QYX	NS	CO	EV	UR
D	DRBW	QSG	HKE	VT	JF	UCY	MA	LO	NI	PX
E	MXQD	KTR	WOA	BN	SH	GYV	UC	IF	EL	PJ
F	XMNW	GCS	EJV	BQ	TR	AIP	KD	LF	HO	UY
G	FGOX	AHK	QJC	IN	SM	TDP	VE	WB	RU	LY
H	QHMP	YIN	VAW	OU	CR	XTK	JG	FB	DL	SE
I	FPGO	MBK	XNE	VL	AR	CDS	JI	WH	UT	YQ
J	EDGO	WFR	SVU	YN	MT	XPQ	KA	CJ	LI	HB
K	OQXB	WSF	RYN	JL	UK	VCM	PG	HE	DT	AI
L	PCLE	HWQ	IYO	TS	FG	ANJ	DB	MR	XV	UK
M	INRJ	GCB	WPX	FM	SA	QDV	UT	HK	YE	OL
N	DMPJ	GWI	KLY	QF	NC	UXV	OR	TB	HS	AE
O	QCXL	TRI	BFH	SJ	GD	UPK	MN	AO	YW	VE
P	NTOP	KIA	UJW	FV	GM	EBL	RD	YC	XS	HQ
Q	MXTS	EWU	OKD	GC	QY	VAF	LR	JP	HN	BI
R	LDUT	SYA	NHE	CK	IP	BVW	GR	OJ	MF	XQ
S	BLGY	DKP	TCF	XI	VJ	EWM	AU	NS	HR	QO
T	KIYR	DOL	STC	GN	HM	VPQ	WB	JX	UA	EF
U	GQBD	FHM	NPT	XS	YJ	OEA	LW	IC	VU	KR
V	XYNE	IVW	UOH	FC	PL	KAQ	GD	SM	RJ	TB
W	YQXP	KJB	DGE	RC	FA	THS	OI	WL	UV	MN
X	QUPF	CHW	JOV	XS	IA	KDB	LN	MT	GE	YR
Y	YCGP	QDF	KHB	AN	TX	MOV	SI	EW	LR	JU

NAVAIDS

Id	Name	Channel	Position	Elevation
DAN	Incirlik	21	N37 00.950 E035 26.883	243
AKR	Akrotiri	107	N34 34.765 E032 57.769	147
PHA	Paphos	79	N34 42.997 E032 28.963	35
RMD	Ramat David	84	N32 39.892 E035 11.265	136
OS66	Kuweires Military Aviation Institute	36	N36 11.362 E037 34.226	1200

**FOR DCS
 USE ONLY**



ATIS	AKROTIRI GND	AKROTIRI TWR	OVERLORD CONTROL	TACAN	FIELD ELEVATION
288.20 MHz	240.10 122.10	339.85 130.075	377.8	AKR 107X	75 [ft] 23 [m]

ATIS
 288.20
 AKROTIRI GROUND
 240.10
 AKROTIRI TOWER
 339.85
 OVERLORD
 377.80

NOT FOR CIVIL USE

CAUTION: If unable to comply with restrictions advise ATC prior to departure.



LAKE

N 34 45.14
E 032 55.40

Dam 1253'

2592'

1854'

LIMASSOL

ECHO

N 34 42.60
E 033 10.00

INITIAL 10

N 34 37.15
E 032 52.67

AKROTIRI

AKR

116.00 AK

Chan107X

NDB AK
365.00 kHz

PAPA

N 34 39.39
E 032 46.48

4,000
2,000

DME ARC



SIERRA

N 34 25.31
E 032 58.40

MEDITERRANEAN SEA

ARR / DEP ROUTE DESCRIPTION

ARRIVAL GENERAL

Pass Entry at 5.000' or below. Overhead Brake RWY 10: pass INITIAL 10 at 2.000' MSL. Straight-in RWY 10 : pass INITIAL 1.500' or below.

ARR RWY10 PAPA / LAKE: Direct initial.

ARR RWY10 SIERRA: Intercept ARC 7 of AKR to INITIAL 10.

ARR ECHO: no ENTRY.

DEPARTURE GENERAL

Pass Departure end of runway at 1.000' AGL or below. Keep RWY heading until coastline.

DEP RWY10 ECHO: Direct EXIT.

DEP RWY10 SIERRA: Climbing right turn, intercept R180 AKR to Sierra.

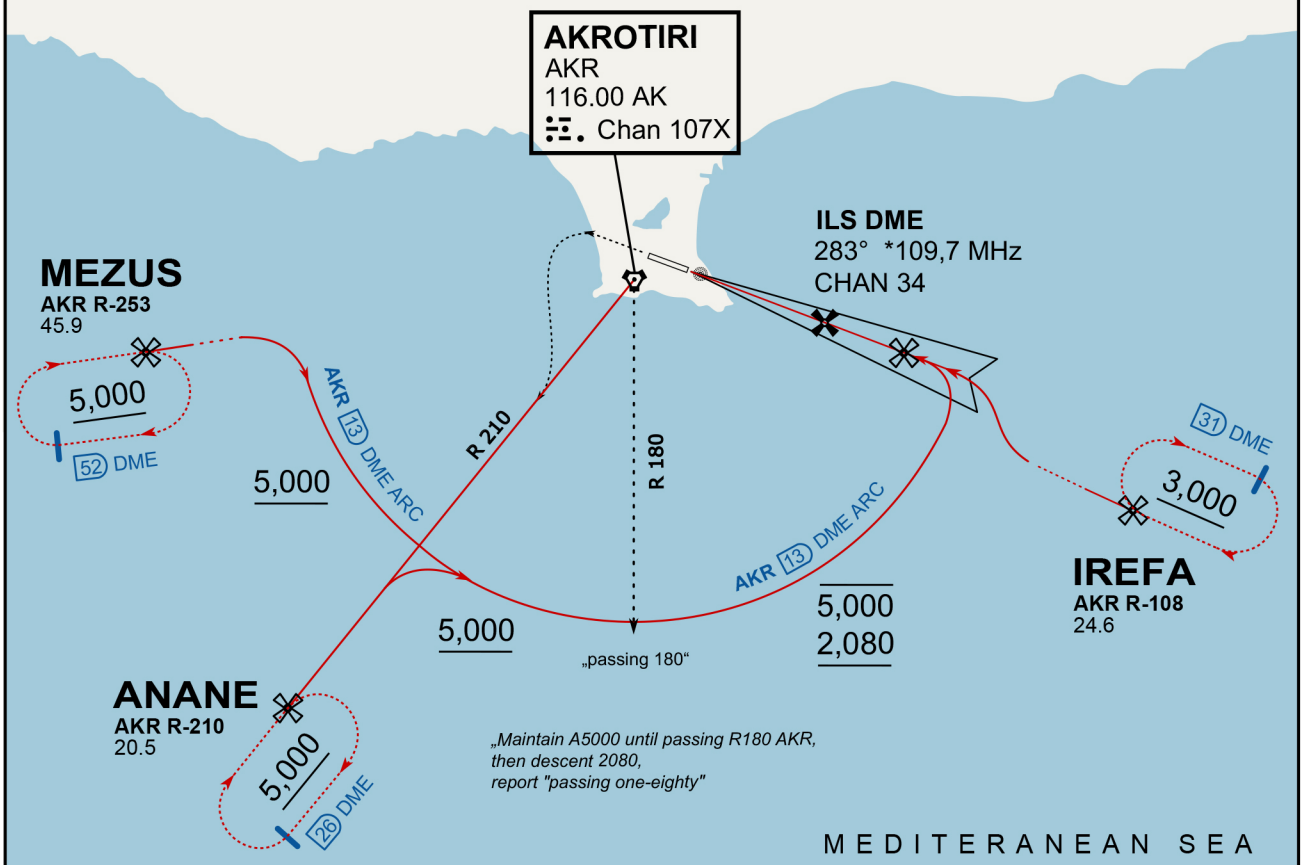
DEP RWY10 PAPA: Climbing right turn until R180 AKR, then direct Papa

DEP LAKE: no EXIT.

ATIS
288.200
AKROTIRI GROUND
122.100
AKROTIRI TOWER
339.850
APP (OVERLORD)
377.800

NOT FOR CIVIL USE

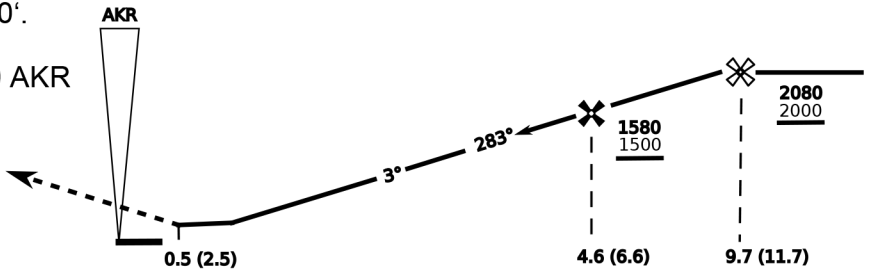
CAUTION: If unable to comply with restrictions advise ATC prior to departure.



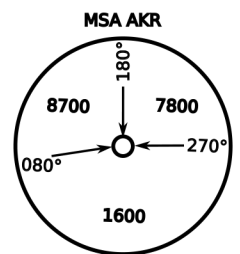
„Maintain A5000 until passing R180 AKR, then descent 2080, report "passing one-eighty"“

MEDITERANEAN SEA

On Track 283° climb A 4.000'. passing 2.080' (2.000' AAL) turn left and intercept R-210 AKR to ANANE. Enter ANANE Holding.



CAT	ILS/DME	LOC/DME	CIRCLE	GS (kts)				
				80	120	150	180	210
A	280 (200)	390 (320) 800m	680 (610) 1500m	FAF - MAPt (4.1NM) 3:06 2:03 1:38 1:22 1:10				
B	800m		680 (610) 1600m	RoD (fpm) 420 640 800 950 1110				
C	290 (210) 800m		780 (710) 2400m	- CIRCLING PROHIBITED N of Rwy - no AUTO coupled ILS approaches - when established on ILS contact Tower - Timing not Auth to define MAPt				
D	310 (230) 800m		780 (710) 3600m					
E	340 (260) 800m		1380 (1310) 3600m					



ATIS
377.475 (#8)

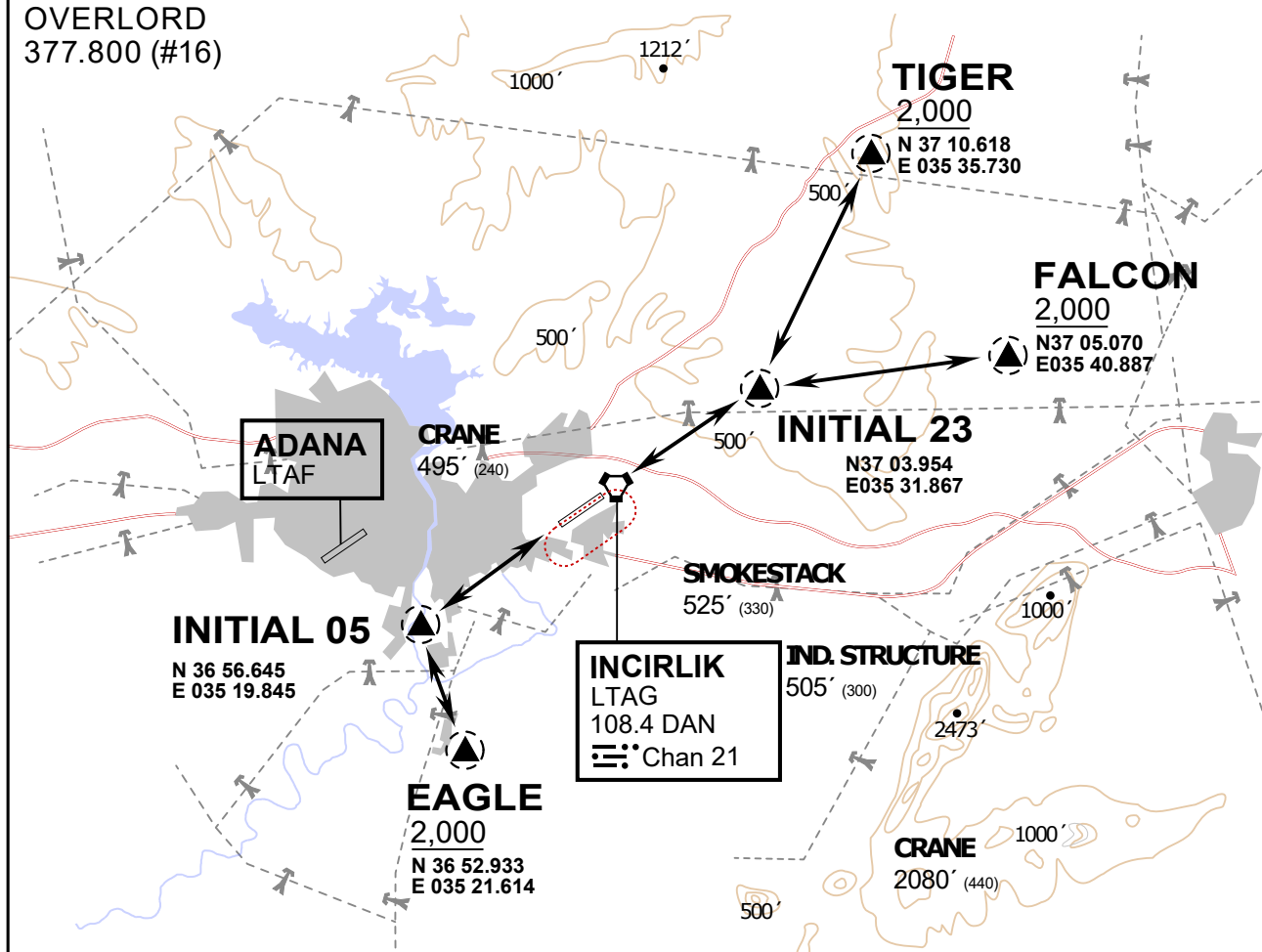
INCIRLIK GROUND
371.3500 (#7)

INCIRLIK TOWER
360.100 (#6)

OVERLORD
377.800 (#16)

NOT FOR CIVIL USE

CAUTION: If unable to comply
with restrictions advise ATC
prior to departure.



vJaBoG32 ETTR NAV CHART

ARR / DEP ROUTE DESCRIPTION

STRAIGHT-IN RWY 05 / 23

Pass entry EAGLE / TIGER / FALCON at 2000' and INITIAL at 1500'

OVERHEAD BREAK RWY 05 / 23

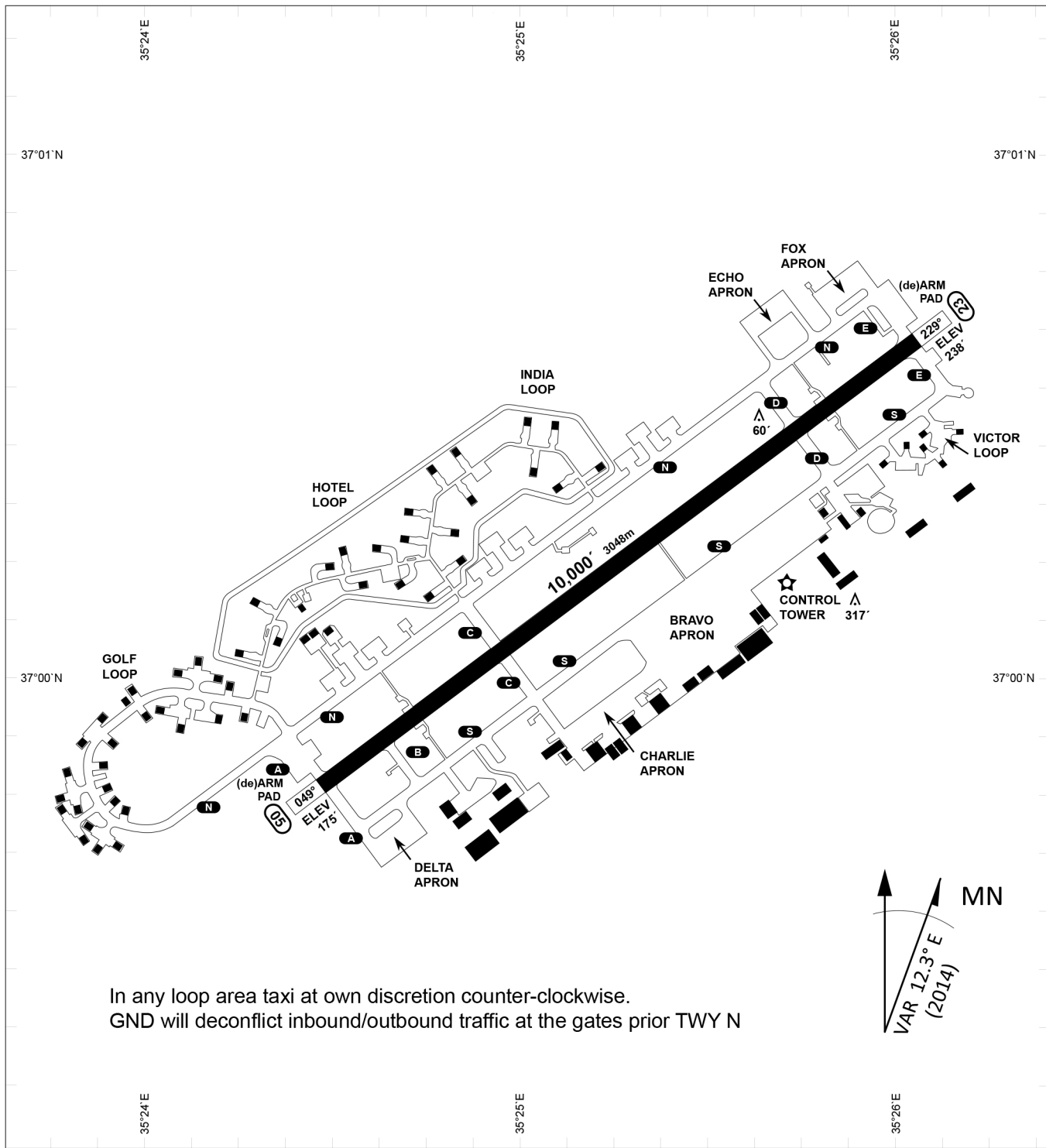
Pass entry EAGLE / TIGER / FALCON at 2500',
pass INITIAL at 2000' break to the south at 2000' pattern altitude.

HELICOPTER ROUTES

Pass entry EAGLE / TIGER / FALCON at 1000' or below, pass INITIAL at 1000' break to the south at 1000' pattern altitude.

DEPARTURE ALL DIRECTIONS

pass DER below 1500ft



In any loop area taxi at own discretion counter-clockwise.
 GND will deconflict inbound/outbound traffic at the gates prior TWY N

PAR	RWY	CAT	MINIMA	ARP	ELEV	Scale 1:35'500 0 300 600 900 1200 1500 [m] 0 1000 2000 3000 4000 5000 [ft]
	21L	A B D E	2057 - 0.8 200 (200-0.8/1.6) GS 3°	37°0'56.000" N	1857 [ft]	
SRA	3R	A B D E	2057 - 0.8 200 (200-0.8/1.6) GS 3°	35°26'53.000" E	566 [m]	
	21R	A C D E	2257 - 1.2 350 (350-1.2/1.6)			
	3L	A C D E	2257 - 1.2 350 (350-1.2/1.6)			

RWY	TORA	TORA from D	TORA from B	COURSE	PSN THR	ALS
23	10,000 [ft] 3048 [m]	8,000 [ft] 2438 [m]		235°	37°00.611'N 035°26.368'E	⊙
05	10,000 [ft] 3048 [m]		9,000 [ft] 2743 [m]	055°	36°59.043'N 035°24.760'E	⊙

ATIS	INCIRLIK GROUND	INCIRLIK TOWER	CONTROL	TACAN	ILS RWY 05	ILS RWY 23
377.475	371.350 123.020	360.100 121.100	337.800	DAN21x	109.3MHz	111.7MHz