

MISSION DATA CARD

| | | | | | | | |
|----------------|-------------|-----------|--|----------------|-----|-------------|-------|
| OPORD | | Callsign | | Mission | | Date/Time | |
| 3085/2024 | | Rattler 1 | | Training | | 212000JUL24 | |
| Task | | | | | | | Freq |
| AO | | | | | | | 133.5 |
| Departure | | | | Recovery | | | |
| HELICOPTER DEP | | | | HELICOPTER ARR | | | |
| # | Callsign | Pilot | | IFF | TCN | LSR | NET |
| -1 | Rattler 1-1 | Hudson | | 4611 | 1Y | 1251 | |
| -2 | Rattler 1-2 | addiks | | 4612 | 64Y | 1252 | |
| -3 | Rattler 1-3 | Warblade | | 4613 | 64X | 1253 | |
| -4 | Rattler 1-4 | Mütze | | 4614 | 1X | 1254 | |

LOADOUT

| | | | | | | |
|-----|--|--|--|--|------|--|
| A/A | | | | | GUN | |
| A/G | | | | | CHF | |
| POD | | | | | FLR | |
| TKS | | | | | FUEL | |

TOLD

| | | | | | |
|------|---------|--------|-------|-------|------|
| | Takeoff | Target | Joker | Bingo | Land |
| FUEL | 2513 | | | | |

AIRBASES

| | | | | | | | | |
|-----|------------|-----|-------|-------|-------|-----|------|-------|
| | Name | TCN | ATIS | GND | TWR | RWY | Elev | ILS |
| Dep | Nellis AFB | 12X | 270.1 | 275.8 | 327.0 | 21L | 1850 | 109.1 |
| Arr | Nellis AFB | 12X | 270.1 | 275.8 | 327.0 | 21L | 1850 | 109.1 |

COMMS

| Radio | Usage |
|-------|--------|
| 1 | 133.50 |
| 2 | 327.0 |

RADIO CHANNELS

| # | Freq | Name |
|----|---------|--------------------------------|
| 1 | | Flight/Squadron specific |
| 2 | 289.4 | Nellis Clearance Delivery |
| 3 | 275.8 | Nellis Ground |
| 4 | 327.0 | Nellis Tower |
| 5 | 385.4 | Nellis Approach/Departure West |
| 6 | 273.55 | Nellis Approach/Departure East |
| 7 | 317.525 | Nellis Control -- Sally |
| 8 | 254.4 | Nellis Control-- Lee |
| 9 | 305.6 | SOF Bullseye |
| 10 | 343.725 | EMERGENCY SINGLE FRQ |
| 11 | 270.1 | Nellis ATIS |
| 12 | 360.625 | Creech AFB Tower |
| 13 | 250.1 | HAVE QUICK 13 |
| 14 | 251.1 | HAVE QUICK 14 |
| 15 | 252.1 | HAVE QUICK 15 |
| 16 | 377.8 | Blackjack |
| 17 | 265.0 | KC-135 AR-641A |
| 18 | 360.8 | KC-135MPRS AR-635 |
| 19 | 319.8 | KC-135MPRS AR-625 |
| 20 | 300.05 | KC-135 AR-231V |

| RAMROD | | | | | | | | | | |
|------------|------|-----|-----|----|----|-----|----|----|----|----|
| 0 | 1 | 2 | 3 | 4 | 5 | 6 | 7 | 8 | 9 | |
| P | R | E | C | L | U | D | I | N | G | |
| KTC 1400 C | | | | | | | | | | |
| | 0 | 1 | 2 | 3 | 4 | 5 | 6 | 7 | 8 | 9 |
| A | HIGY | KRP | FEQ | JO | TM | BLU | AD | XV | NW | CS |
| B | VLHK | RAG | PXJ | WB | SU | IQC | ED | TY | NO | FM |
| C | STBC | YUM | FIP | AW | VX | NDL | GK | RO | EQ | HJ |
| D | XMYI | GCJ | SVN | HQ | EO | DFW | TA | KR | PU | BL |
| E | ENGA | PWI | VHS | DB | UX | MOK | LR | CT | QF | JY |
| F | OTYB | RFA | IQD | SL | NC | GPH | UJ | MV | KX | EW |
| G | HIMN | QLS | UAV | WF | RD | TKG | PJ | YX | CE | OB |
| H | GNJB | UTX | QWI | FE | HM | OCY | SA | LD | PK | VR |
| I | SAIR | UOL | VNM | CK | GF | JYH | BT | EX | WD | PQ |
| J | PYKL | JIF | THV | WD | BN | SUQ | RO | AE | GM | XC |
| K | BKHS | CXM | YOT | UE | IN | LGD | JR | PQ | FV | WA |
| L | OITJ | LXG | BRF | WE | MD | YSV | QK | PH | CA | UN |
| M | EQYP | ACJ | GTI | SN | KU | XRF | DH | LV | MW | BO |
| N | GKLR | SCD | UBP | QY | VE | TJN | FH | OW | XA | MI |
| O | ATBL | PGC | SHW | OX | ID | UMV | FE | JR | NK | QY |
| P | SNQJ | IBL | EWK | OP | GT | ARH | CD | YX | MU | VF |
| Q | CFLW | KEB | RAT | XY | JG | MIH | NU | DO | PV | SQ |
| R | PNCK | SIY | TMG | WD | QU | AOH | JV | FX | RE | BL |
| S | UFXS | DPY | VMQ | LJ | NB | RWK | IA | HE | CG | TO |
| T | CVGI | DXK | NAW | EU | YQ | JTB | OP | LH | RF | SM |
| U | PHUT | LSK | AMV | CF | BR | YQI | XG | ND | JO | EW |
| V | AONF | PIW | HLY | QM | SJ | TVE | XK | BR | CD | GU |
| W | WYTK | ASF | VJQ | HO | BG | MPD | UL | NX | ER | IC |
| X | KTXQ | YFN | PAO | SU | WM | BJR | DL | GH | IC | VE |
| Y | IKGB | SWU | LOP | XV | TY | CHE | FD | JM | QA | RN |

NAVAIDS

| Id | Name | Channel | Position | Elevation |
|-----|---------------|---------|--------------------|-----------|
| BCE | Bryce Canyon | 75 | N3741.35 W11218.23 | 9040 |
| BIH | Bishop | 33 | N3722.62 W11821.99 | 4114 |
| BLD | Boulder | 114 | N3559.75 W11451.82 | 3650 |
| BTY | Beatty | 94 | N3648.54 W11644.86 | 2925 |
| CDC | Cedar City | 120 | N3747.24 W11304.90 | 5463 |
| DAG | Daggett | 79 | N3457.75 W11634.69 | 1760 |
| EED | Needles | 99 | N3445.96 W11428.43 | 650 |
| GFS | Goffs | 91 | N3507.87 W11510.59 | 4019 |
| GRL | Groom Lake | 18 | N3713.91 W11548.16 | 4475 |
| HEC | Hector | 74 | N3447.83 W11627.78 | 1854 |
| ILC | Wilson Creek | 110 | N3815.02 W11423.65 | 9318 |
| INS | Creech AFB | 87 | N3635.20 W11540.12 | 3101 |
| LAS | McCarran Intl | 116 | N3604.78 W11509.59 | 2142 |
| LSV | Nellis | 12 | N3614.68 W11501.50 | 1864 |
| MLF | Milford | 58 | N3821.62 W11300.79 | 4977 |
| MMM | Mormon Mesa | 90 | N3646.16 W11416.65 | 2120 |
| MVA | Mina | 98 | N3833.92 W11801.97 | 7860 |
| OAL | Coale Dale | 124 | N3800.20 W11746.23 | 4800 |
| PGS | Peach Springs | 57 | N3537.48 W11332.67 | 4754 |
| TPH | Tonopah Muni | 119 | N3801.84 W11702.01 | 5330 |
| TQQ | Silverbow | 77 | N3748.00 W11647.00 | 5500 |
| UTI | St George | 23 | N3705.29 W11335.53 | 2871 |



RWY 3L-21R
 PCN 46 R/C/W/T
 RWY 3R-21L
 PCN 51 R/C/W/T
 2017

| PAR | RWY | CAT | MINIMA | | ARP | ELEV | Scale 1:35'500 0 300 600 900 1200 1500 [m] 0 1000 2000 3000 4000 5000 [ft] |
|-----|-----|---------|------------------------------|-------|----------------|-----------|--|
| | 21L | A B D E | 2057 - 0.8 200 (200-0.8/1.6) | GS 3° | 36° 14.060° N | 1857 [ft] | |
| | 3R | A B D E | 2057 - 0.8 200 (200-0.8/1.6) | GS 3° | 115° 01.058° W | 566 [m] | |
| SRA | 21R | A C D E | 2257 - 1.2 350 (350-1.2/1.6) | | | | |
| | 3L | A C D E | 2257 - 1.2 350 (350-1.2/1.6) | | | | |

| RWY | TORA | TODA | ASDA | LDA | PSN | THR | ALS |
|-----|---------------------|---------------------|---------------------|---------------------|--------------|---------------|-----|
| 21L | 10051 [ft] 3063 [m] | 11051 [ft] 3368 [m] | 11051 [ft] 3368 [m] | 10051 [ft] 3063 [m] | 36°14.043° N | 115°01.018° W | ⊕ |
| 3R | 10120 [ft] 3084 [m] | 11120 [ft] 3398 [m] | 11120 [ft] 3398 [m] | 10120 [ft] 3084 [m] | 36°13.029° N | 115°02.038° W | |

| ATIS | NELLIS GROUND | NELLIS TOWER | NELLIS CONTROL | TACAN | ILS RWY 21L | NELLIS EAST | NELLIS WEST |
|-------------|-------------------|------------------|----------------|---------|-------------|-------------|-------------|
| 270.100 MHz | 275.800 121.800 | 327.000 132.55 | 317.525 | LSV 12X | 109.10 Mhz | 384.400 | 385.000 |

HELICOPTER ARR/DEP VAD-CHART | VALID 2014

NELLIS AFB (KLSV)
LAS VEGAS, NEVADA

ATIS
270.100
NELLIS GROUND
275.800
NELLIS TOWER
327.000
BLACKJACK
377.800

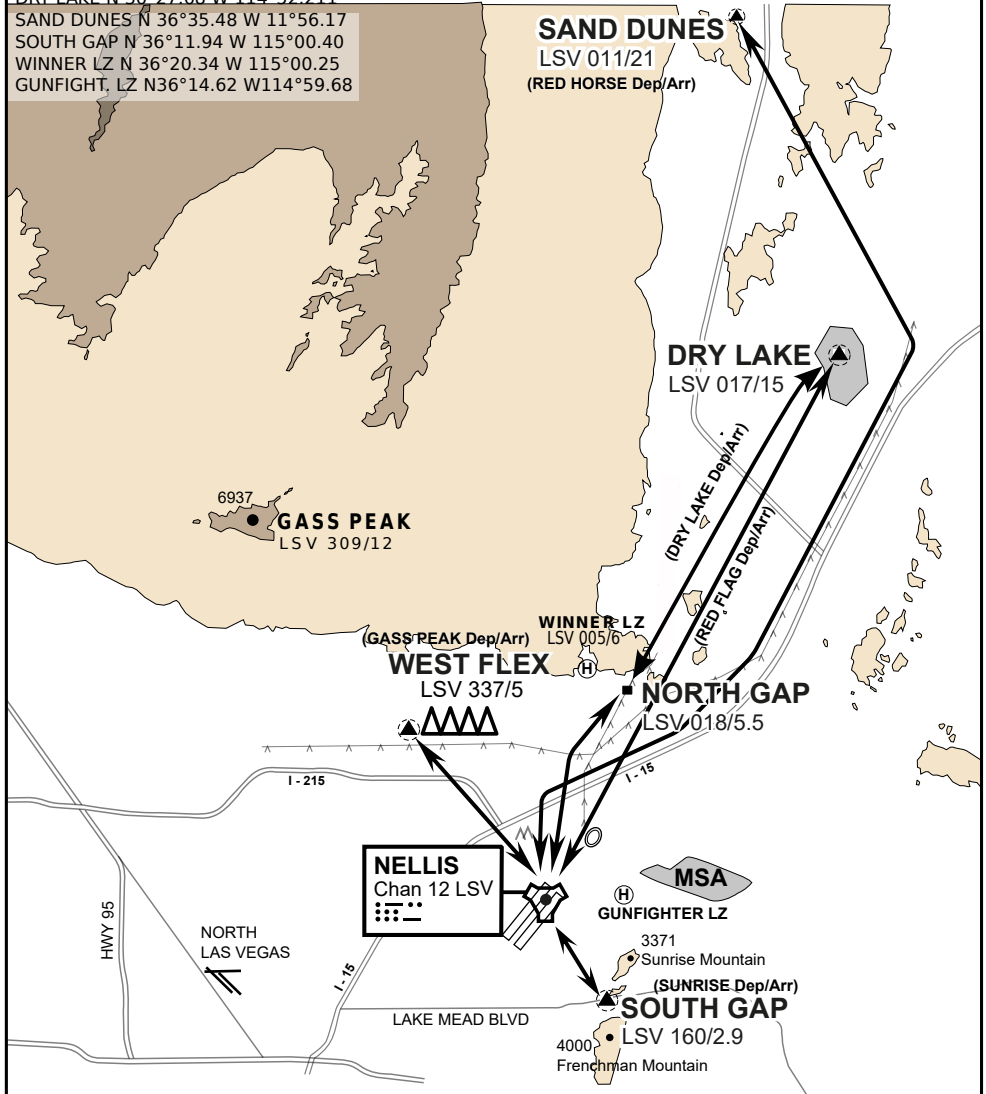
CAUTION: If unable to comply
with restrictions advise ATC
prior to departure.

VMC ONLY

if below WX Minima request SVFR



JOLLY PAD N 36°15.08 W 115°01.65
WEST FLEX N 36°18.64 W 115°08.00
NORTH GAP N 36°20.00 W 114°59.30
DRY LAKE N 36°27.68 W 114°52.211
SAND DUNES N 36°35.48 W 11°56.17
SOUTH GAP N 36°11.94 W 115°00.40
WINNER LZ N 36°20.34 W 115°00.25
GUNFIGHT, LZ N36°14.62 W114°59.68



vJABeG32NTRR NAV CHART

HELICOPTER ARRIVAL AND DEPARTURES ROUTES

v.110 22APR20

HELICOPTER ARR/DEP VAD-CHART | VALID 2014

NELLIS AFB (KLSV)
LAS VEGAS, NEVADA

ATIS
270.100
NELLIS GROUND
275.800
NELLIS TOWER
327.000
BLACKJACK
377.800

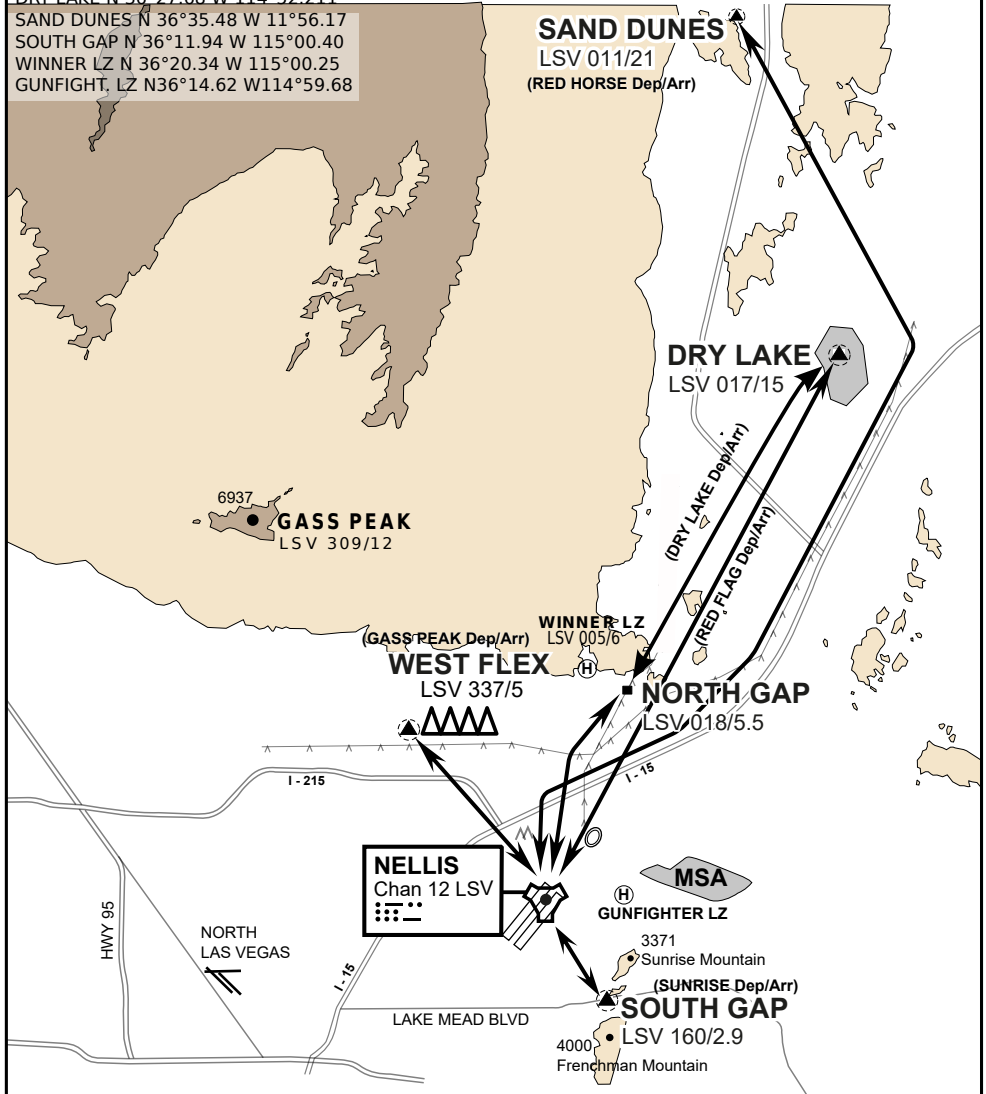
CAUTION: If unable to comply
with restrictions advise ATC
prior to departure.

VMC ONLY

if below WX Minima request SVFR



JOLLY PAD N 36°15.08 W 115°01.65
WEST FLEX N 36°18.64 W 115°08.00
NORTH GAP N 36°20.00 W 114°59.30
DRY LAKE N 36°27.68 W 114°52.211
SAND DUNES N 36°35.48 W 11°56.17
SOUTH GAP N 36°11.94 W 115°00.40
WINNER LZ N 36°20.34 W 115°00.25
GUNFIGHT, LZ N36°14.62 W114°59.68



vJABeG32NTRR NAV CHART

HELICOPTER ARRIVAL AND DEPARTURES ROUTES

v.110 22APR20