

MISSION DATA CARD

OPORD		Callsign		Mission		Date/Time	
3080/2024		Rattler 2		Training		152000JUL24	
Task						Freq	
AO						133.5	
Departure				Recovery			
Helicopter VFR				Helicopter VFR			
#	Callsign	Pilot		IFF	TCN	LSR	NET
-1	Rattler 2-1	Mütze		4621	1Y	1251	
-2	Rattler 2-2	Warblade		4622	64Y	1252	
-3	Rattler 2-3	Remotex		4623	64X	1253	

LOADOUT

A/A						GUN	
A/G						CHF	
POD						FLR	
TKS						FUEL	

TOLD

	Takeoff	Target	Joker	Bingo	Land
FUEL	2513				

AIRBASES

	Name	TCN	ATIS	GND	TWR	RWY	Elev	ILS
Dep	Akrotiri AFB	107X	288.2	240.1	339.85	28	62	109.7
Arr	Akrotiri AFB	107X	288.2	240.1	339.85	28	62	109.7

FLIGHTPLAN

#	Name	Navaid/Coords/DME	ALT	TOT
1	LAKE	N34 45.15 E032 55.40		
2	ECHO	N34 42.60 E033 10		
3	PAPA	N34 39.39 E032 46.48		

OTHER FLIGHTS

Callsign	Mission	Airframe	Freq	TCN	Grpld	Laser
Edelweiss 1	Training	1x F-16C	264.15	1/64		171X
AO		Task				
Nazgul 6	CAP	4x F-15E	262.45	1/64		156X
AO	ETTR	Task	BVR Maneuver Training			
Edelweiss 6	Training	2x F/A-18C	134.65	1/64	40	166X
AO		Task				
Edelweiss 2	Training	4x A-10C	264.25	19/82	21	165X
AO		Task				

RADIO CHANNELS

#	Freq	Name
1		Flight/Squadron specific
2	288.2	Akrotiri ATIS
3	240.1	Akrotiri Ground
4	339.85	Aktrotiri Tower
5	335.05	Akrotiri Approach
6	360.1	Incirlik Tower
7	371.35	Incirlik Ground
8	377.475	Incirlik ATIS
9		No Preset
10	127.3	Paphos ATIS
11	353.8	Paphos Tower
12	304.0	CVN-73 George Washington
13	302.0	LHA-1 Tarawa
14	259.0	CV-59 Forrestal
15		No Preset
16	377.8	Overlord
17	265.0	KC-135 Texaco-1 medium/slow
18	319.8	KC-135 Arco-1
19	360.8	KC-135MPRS Arco-2
20	256.0	S-3B Recovery Tanker

RAMROD

0	1	2	3	4	5	6	7	8	9
O	U	T	W	E	A	R	I	N	G

KTC 1400 C

	0	1	2	3	4	5	6	7	8	9
A	OWVS	MQA	PBU	HL	TE	JKX	CR	DF	YN	IG
B	BHDV	YOW	JRG	AM	IS	NKL	FE	CP	QX	TU
C	MGHY	NLP	DOA	TI	WF	EBJ	QK	RS	XC	UV
D	JRUF	GMX	QSO	YW	NV	ACB	PI	LT	HK	ED
E	GTWR	XCP	BLF	OJ	VM	NYU	AQ	EI	DS	KH
F	WTLQ	MKY	SNO	VE	AB	XCU	PF	GH	JR	ID
G	FRGK	CAU	SWX	BO	EY	TVI	NL	QM	PH	JD
H	CQSD	NMT	JIF	VR	BY	UHA	KW	XG	PO	EL
I	MPL	IFO	TSD	RK	VG	ACY	XH	BU	WN	JQ
J	TYFN	VWQ	KAI	JL	PX	EOM	RD	UB	CH	SG
K	UIMB	LTA	RSN	PX	YC	JFG	KH	VE	DW	OQ
L	BERG	CMX	PUL	KO	HF	ISJ	DA	WY	NV	QT
M	VDJC	KRY	MOL	HN	GW	PEF	IT	UA	BQ	SX
N	CLXJ	QPR	BFO	SI	KD	NVU	ME	AW	TH	YG
O	JOPH	VMI	KTX	YG	SR	BUC	LE	QF	AN	DW
P	QFJK	PTW	YCN	RV	HL	ISA	DU	EX	MB	GO
Q	BJIG	ATQ	DXS	UE	PW	FCL	RO	KN	HY	VM
R	OYTS	CGR	JIA	WN	MH	LVK	FP	BE	DX	QU
S	GSDN	JXB	MOV	KL	QF	IAT	HE	WC	UP	RY
T	FLHC	OSY	QTI	ED	AB	UMR	NV	WP	GX	JK
U	NFUP	KGB	CYO	IQ	AX	MHE	ST	LW	JR	VD
V	WRKH	CGN	QVS	EI	PF	BMO	DX	UT	LJ	YA
W	CDOW	BKE	HXS	TA	GF	YMU	IQ	LV	RN	PJ
X	IVAB	KUN	YGQ	ML	CS	JOE	HP	TX	WD	FR
Y	FMLP	QRJ	YSG	HW	NT	AXO	KI	DU	CV	EB

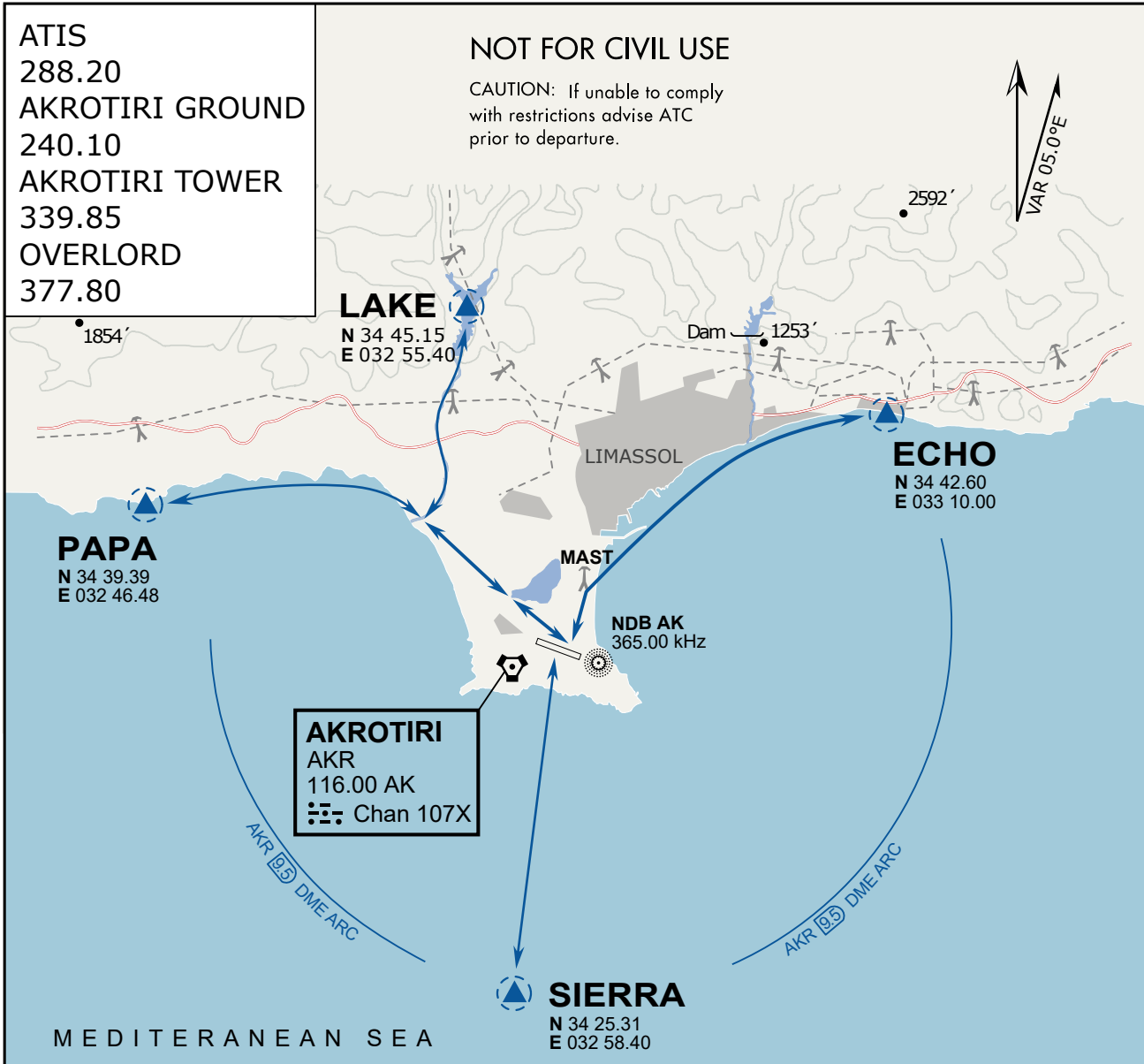
NAVAIDS

Id	Name	Channel	Position	Elevation
DAN	Incirlik	21	N37 00.950 E035 26.883	243
AKR	Akrotiri	107	N34 34.765 E032 57.769	147
PHA	Paphos	79	N34 42.997 E032 28.963	35
RMD	Ramat David	84	N32 39.892 E035 11.265	136
OS66	Kuweires Military Aviation Institute	36	N36 11.362 E037 34.226	1200

**FOR DCS
 USE ONLY**



ATIS	AKROTIRI GND	AKROTIRI TWR	OVERLORD CONTROL	TACAN	FIELD ELEVATION
288.20 MHz	240.10 122.10	339.85 130.075	377.8	AKR 107X	75 [ft] 23 [m]



ARR / DEP ROUTE DESCRIPTION

GENERAL

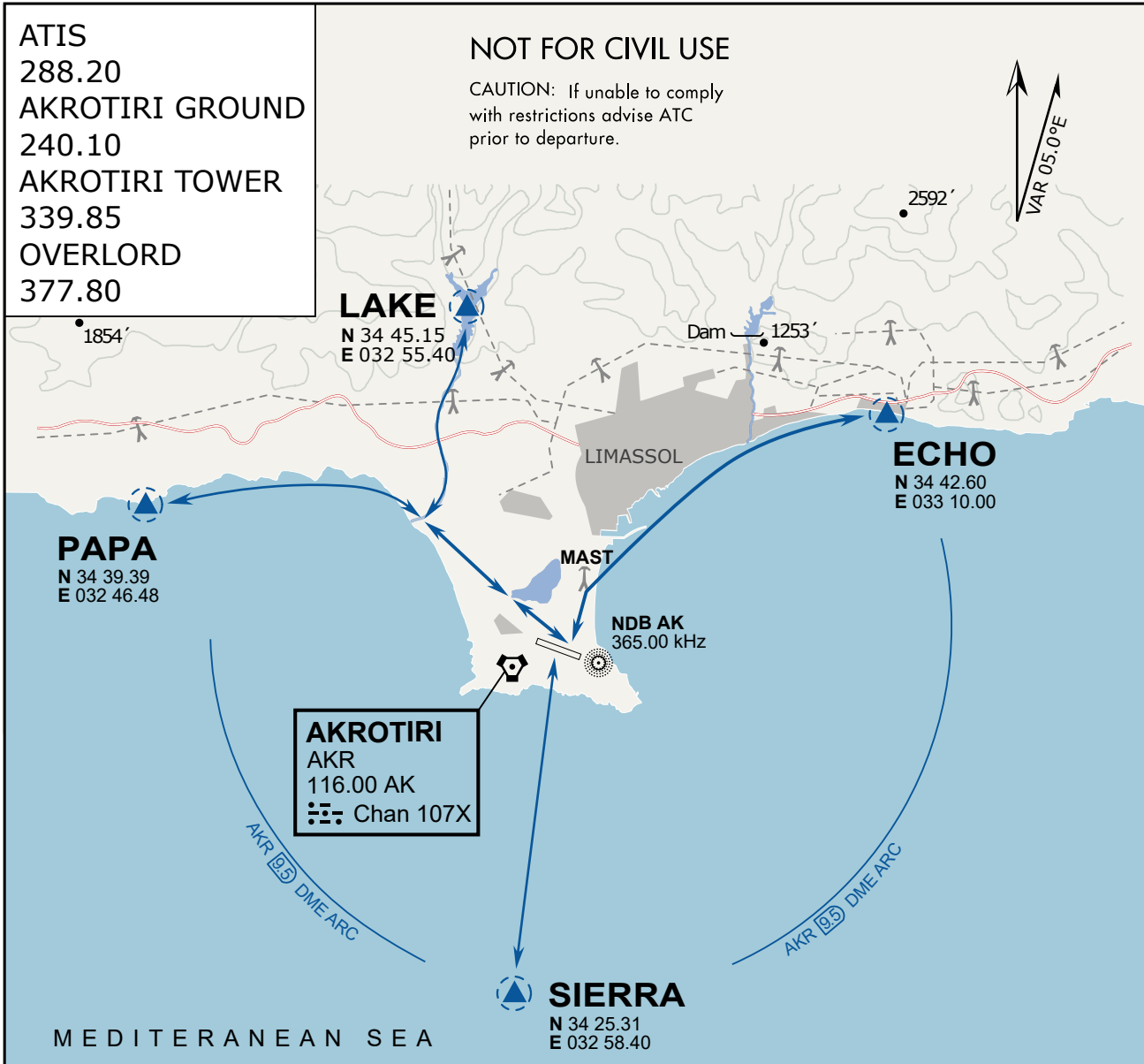
Stay at or below 500' AGL.

DEPARTURE

- ECHO: Via the 4 masts, along the coastline to EXIT.
- LAKE: Stay SOUTH WEST of the dry lake, to the river mouth, follow river to EXIT.
- PAPA: Stay SOUTH WEST of the dry lake, follow coastline to EXIT.
- SIERRA: Direct EXIT.

ARRIVAL

- LAKE: Follow river to coastline, then direct LCRA.
- PAPA: Follow coastline to rivermouth, then direct LCRA.
- ECHO: Follow coastline to the 4 masts, then to LCRA.
- SIERRA: Direct to LCRA.



ARR / DEP ROUTE DESCRIPTION

GENERAL

Stay at or below 500' AGL.

DEPARTURE

- ECHO: Via the 4 masts, along the coastline to EXIT.
- LAKE: Stay SOUTH WEST of the dry lake, to the river mouth, follow river to EXIT.
- PAPA: Stay SOUTH WEST of the dry lake, follow coastline to EXIT.
- SIERRA: Direct EXIT.

ARRIVAL

- LAKE: Follow river to coastline, then direct LCRA.
- PAPA: Follow coastline to rivermouth, then direct LCRA.
- ECHO: Follow coastline to the 4 masts, then to LCRA.
- SIERRA: Direct to LCRA.