

MISSION DATA CARD

OPORD		Callsign		Mission		Date/Time		
3079/2024		Nazgul 6		CAP		152000JUL24		
Task	BVR Maneuver Training					Freq		
AO	ETTR					262.45		
Departure				Recovery				
RWY10 VFR				ILS 28				
#	Callsign		Pilot		IFF	TCN	LSR	NET
-1	Nazgul 6-1		Striver/Uta		1161	1Y	1561	
-2	Nazgul 6-2		Razorback		1162	64Y	1562	

LOADOUT

A/A	6xA120C, 2xA9M				GUN	100% SAPHEI	
A/G					CHF	120	
POD	TGT, NAV				FLR	60	
TKS	2xFT610				FUEL	100%	

TOLD

	Takeoff	Target	Joker	Bingo	Land
FUEL	30518				

AIRBASES

	Name	TCN	ATIS	GND	TWR	RWY	Elev	ILS
Dep	Akrotiri AFB	107X	288.2	240.1	339.85	28	62	109.7
Arr	Akrotiri AFB	107X	288.2	240.1	339.85	28	62	109.7
Div	Incirlik AFB	21X	$\frac{377.47}{5}$	371.35	360.1	5	190	

FLIGHTPLAN

#	Name	Navaid/Coords/DME	ALT	TOT
1	ECHO	N34 42.600 E033 10	10000	
2	LAKE	N34 45.150 E032 55.400	5000	
3	CAP 1	N35 05 E034 25	35000	
4	CAP 2	N34 05 E034 25	35000	
5	NFZ N	N35 59 E035 29	35000	
6	NFZ S	N33 20 E035	35000	
7	Shore S	N33 41 E035 26	0	
8	Shore Mid	N34 35 E035 59	0	
9	Shore N	N36 09 E035 53	0	
10	IREFA	N34 25.328 E033 26.664	3000	

COMMS

Radio	Usage
1	01
2	04 / 16 / 04

NOTES

===SEQUENCE===

0800J

ATIS : RW10, QNH 29.82

T/O AKR Dep via ECHO

SET TCN 72X

MIL PWR CLMB to A35

CAP 1 - HOT 090 - 15nm - A35 - M.8 - LH - split EL

RTB AKR Rec via ILS IREFA

===RADIO===

NAZGUL 6 - CH01

BALROG 7 - CH02

AKR TWR - CH04

CVN72 - CH07 - TCN72X

OVERLORD1 - CH16 (on station 0812J)

ARCO1 - CH17 (on station 0824J)

===ROE - weapons hold===

- aggressive maneuvering

- STT

- distance to CG 40nm

- west WP5->6

SUPPORT**Tanker**

Callsign	TCN	Freq	ALT	TAS
ARCO 1	22Y	319.8	FL222	400
	Pos	ARCO1: (N3701 E03457)		

AWACS

Callsign	Freq	ALT	Pos
OVERLORD2	377.8	FL320	N3713 E03643 - N3714 E03749

OTHER FLIGHTS

Callsign	Mission	Airframe	Freq	TCN	Grpld	Laser
Edelweiss 1	Training	1x F-16C	264.15	1/64		171X
AO		Task				
Rattler 2	Training	3x AH-64D	133.5	1/64		125X
AO		Task				
Edelweiss 6	Training	2x F/A-18C	134.65	1/64	40	166X
AO		Task				
Edelweiss 2	Training	4x A-10C	264.25	19/82	21	165X
AO		Task				

RADIO CHANNELS

#	Freq	Name
1		Flight/Squadron specific
2	288.2	Akrotiri ATIS
3	240.1	Akrotiri Ground
4	339.85	Aktrotiri Tower
5	335.05	Akrotiri Approach
6	360.1	Incirlik Tower
7	371.35	Incirlik Ground
8	377.475	Incirlik ATIS
9		No Preset
10	127.3	Paphos ATIS
11	353.8	Paphos Tower
12	304.0	CVN-73 George Washington
13	302.0	LHA-1 Tarawa
14	259.0	CV-59 Forrestal
15		No Preset
16	377.8	Overlord
17	265.0	KC-135 Texaco-1 medium/slow
18	319.8	KC-135 Arco-1
19	360.8	KC-135MPRS Arco-2
20	256.0	S-3B Recovery Tanker

RAMROD

0	1	2	3	4	5	6	7	8	9
O	U	T	W	E	A	R	I	N	G

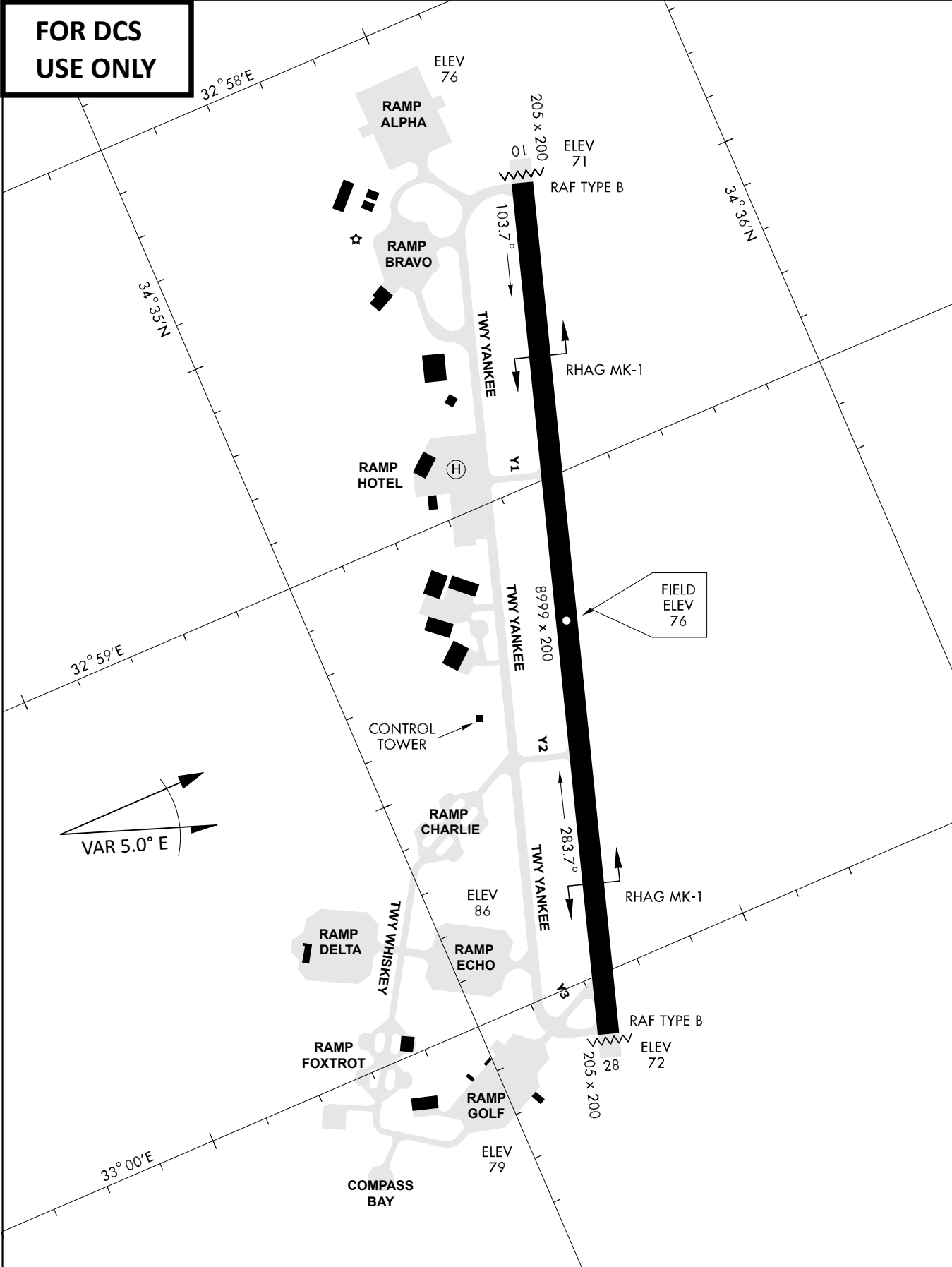
KTC 1400 C

	0	1	2	3	4	5	6	7	8	9
A	OWVS	MQA	PBU	HL	TE	JKX	CR	DF	YN	IG
B	BHDV	YOW	JRG	AM	IS	NKL	FE	CP	QX	TU
C	MGHY	NLP	DOA	TI	WF	EBJ	QK	RS	XC	UV
D	JRUF	GMX	QSO	YW	NV	ACB	PI	LT	HK	ED
E	GTWR	XCP	BLF	OJ	VM	NYU	AQ	EI	DS	KH
F	WTLQ	MKY	SNO	VE	AB	XCU	PF	GH	JR	ID
G	FRGK	CAU	SWX	BO	EY	TVI	NL	QM	PH	JD
H	CQSD	NMT	JIF	VR	BY	UHA	KW	XG	PO	EL
I	MPL	IFO	TSD	RK	VG	ACY	XH	BU	WN	JQ
J	TYFN	VWQ	KAI	JL	PX	EOM	RD	UB	CH	SG
K	UIMB	LTA	RSN	PX	YC	JFG	KH	VE	DW	OQ
L	BERG	CMX	PUL	KO	HF	ISJ	DA	WY	NV	QT
M	VDJC	KRY	MOL	HN	GW	PEF	IT	UA	BQ	SX
N	CLXJ	QPR	BFO	SI	KD	NVU	ME	AW	TH	YG
O	JOPH	VMI	KTX	YG	SR	BUC	LE	QF	AN	DW
P	QFJK	PTW	YCN	RV	HL	ISA	DU	EX	MB	GO
Q	BJIG	ATQ	DXS	UE	PW	FCL	RO	KN	HY	VM
R	OYTS	CGR	JIA	WN	MH	LVK	FP	BE	DX	QU
S	GSDN	JXB	MOV	KL	QF	IAT	HE	WC	UP	RY
T	FLHC	OSY	QTI	ED	AB	UMR	NV	WP	GX	JK
U	NFUP	KGB	CYO	IQ	AX	MHE	ST	LW	JR	VD
V	WRKH	CGN	QVS	EI	PF	BMO	DX	UT	LJ	YA
W	CDOW	BKE	HXS	TA	GF	YMU	IQ	LV	RN	PJ
X	IVAB	KUN	YGQ	ML	CS	JOE	HP	TX	WD	FR
Y	FMLP	QRJ	YSG	HW	NT	AXO	KI	DU	CV	EB

NAVAIDS

Id	Name	Channel	Position	Elevation
DAN	Incirlik	21	N37 00.950 E035 26.883	243
AKR	Akrotiri	107	N34 34.765 E032 57.769	147
PHA	Paphos	79	N34 42.997 E032 28.963	35
RMD	Ramat David	84	N32 39.892 E035 11.265	136
OS66	Kuweires Military Aviation Institute	36	N36 11.362 E037 34.226	1200

**FOR DCS
 USE ONLY**



ATIS	AKROTIRI GND	AKROTIRI TWR	OVERLORD CONTROL	TACAN	FIELD ELEVATION
288.20 MHz	240.10 122.10	339.85 130.075	377.8	AKR 107X	75 [ft] 23 [m]

ATIS

288.20

AKROTIRI GROUND

240.10

AKROTIRI TOWER

339.85

OVERLORD

377.80

NOT FOR CIVIL USE

CAUTION: If unable to comply
with restrictions advise ATC
prior to departure.

ARR / DEP ROUTE DESCRIPTION

ARRIVAL GENERAL

Pass Entry at 5.000' or below. Overhead Brake RWY 10: pass INITIAL 10 at 2.000' MSL.
Straight-in RWY 10 : pass INITIAL 1.500' or below.

ARR RWY10 PAPA / LAKE: Direct initial.

ARR RWY10 SIERRA: Intercept ARC 7 of AKR to INITIAL 10.

ARR ECHO: no ENTRY.

DEPARTURE GENERAL

Pass Departure end of runway at 1.000' AGL or below. Keep RWY heading until coastline.

DEP RWY10 ECHO: Direct EXIT.

DEP RWY10 SIERRA: Climbing right turn, intercept R180 AKR to Sierra.

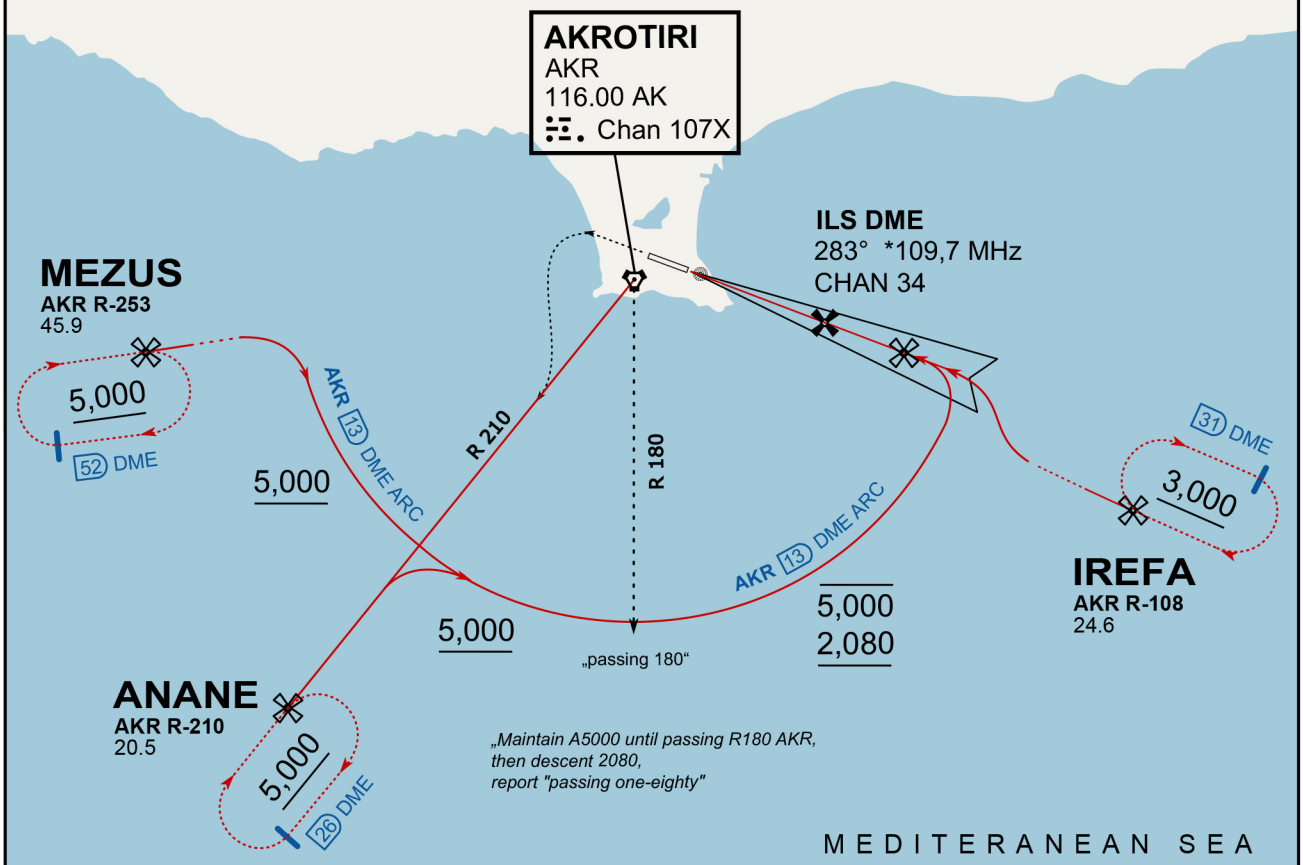
DEP RWY10 PAPA: Climbing right turn until R180 AKR, then direct Papa

DEP LAKE: no EXIT.

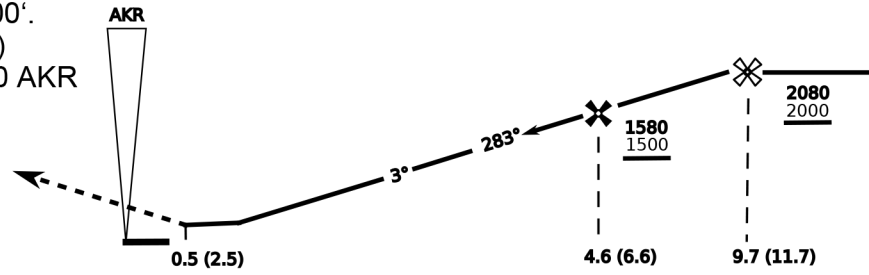
ATIS
288.200
AKROTIRI GROUND
122.100
AKROTIRI TOWER
339.850
APP (OVERLORD)
377.800

NOT FOR CIVIL USE

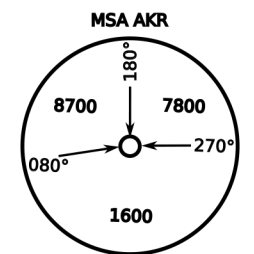
CAUTION: If unable to comply with restrictions advise ATC prior to departure.



On Track 283° climb A 4.000'.
passing 2.080' (2.000' AAL)
turn left and intercept R-210 AKR
to ANANE.
Enter ANANE Holding.



CAT	ILS/DME	LOC/DME	CIRCLE	GS (kts)				
				80	120	150	180	210
A	280 (200)	390 (320) 800m	680 (610) 1500m	FAF - MAPt (4.1NM) 3:06 2:03 1:38 1:22 1:10				
B	800m		680 (610) 1600m	RoD (fpm) 420 640 800 950 1110				
C	290 (210) 800m		780 (710) 2400m	- CIRCLING PROHIBITED N of Rwy - no AUTO coupled ILS approaches - when established on ILS contact Tower - Timing not Auth to define MAPt				
D	310 (230) 800m		780 (710) 3600m					
E	340 (260) 800m		1380 (1310) 3600m					



ATIS
377.475 (#8)

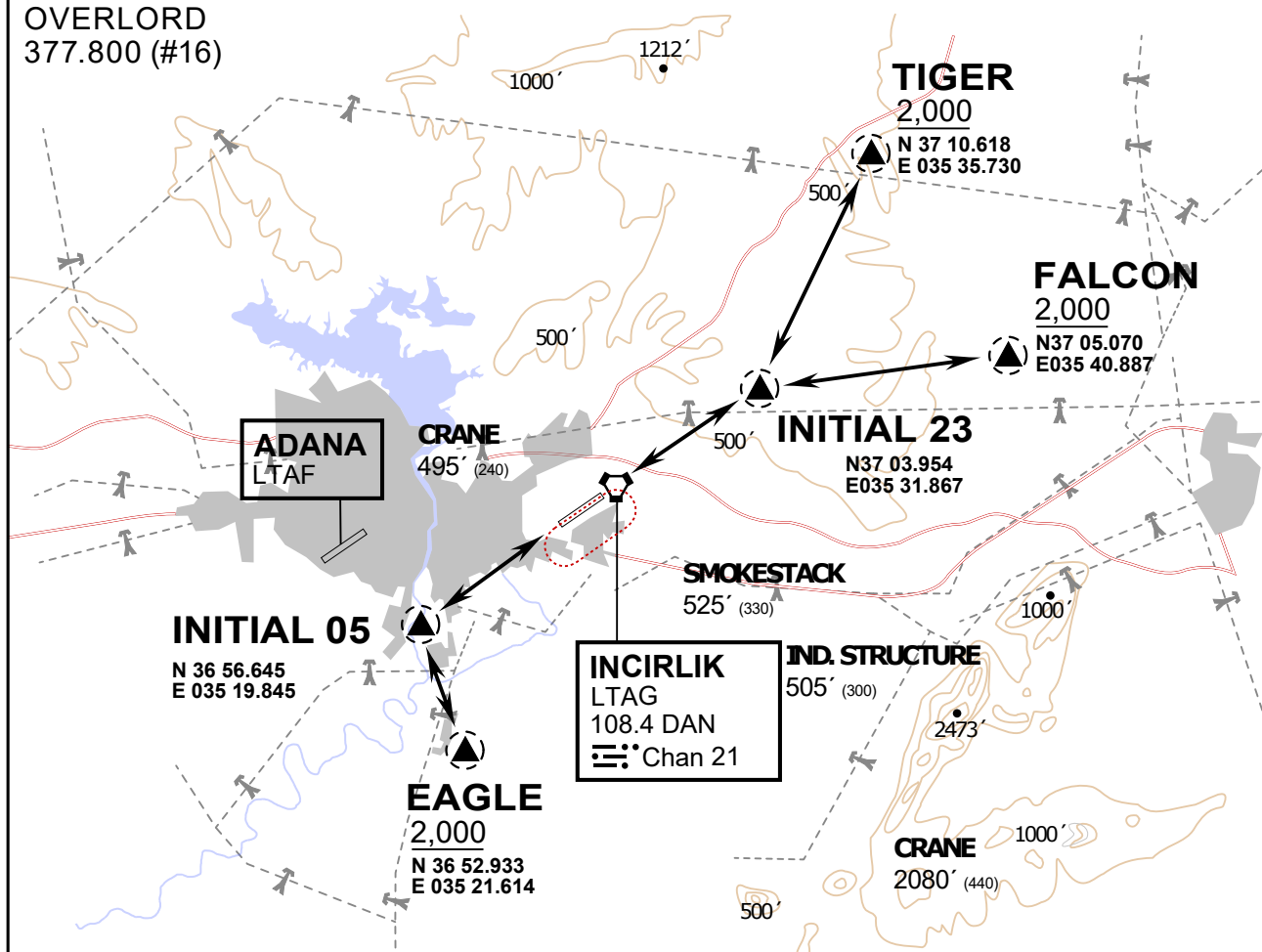
INCIRLIK GROUND
371.3500 (#7)

INCIRLIK TOWER
360.100 (#6)

OVERLORD
377.800 (#16)

NOT FOR CIVIL USE

CAUTION: If unable to comply
with restrictions advise ATC
prior to departure.



vJaBoG32 ETTR NAV CHART



ARR / DEP ROUTE DESCRIPTION

STRAIGHT-IN RWY 05 / 23

Pass entry EAGLE / TIGER / FALCON at 2000' and INITIAL at 1500'

OVERHEAD BREAK RWY 05 / 23

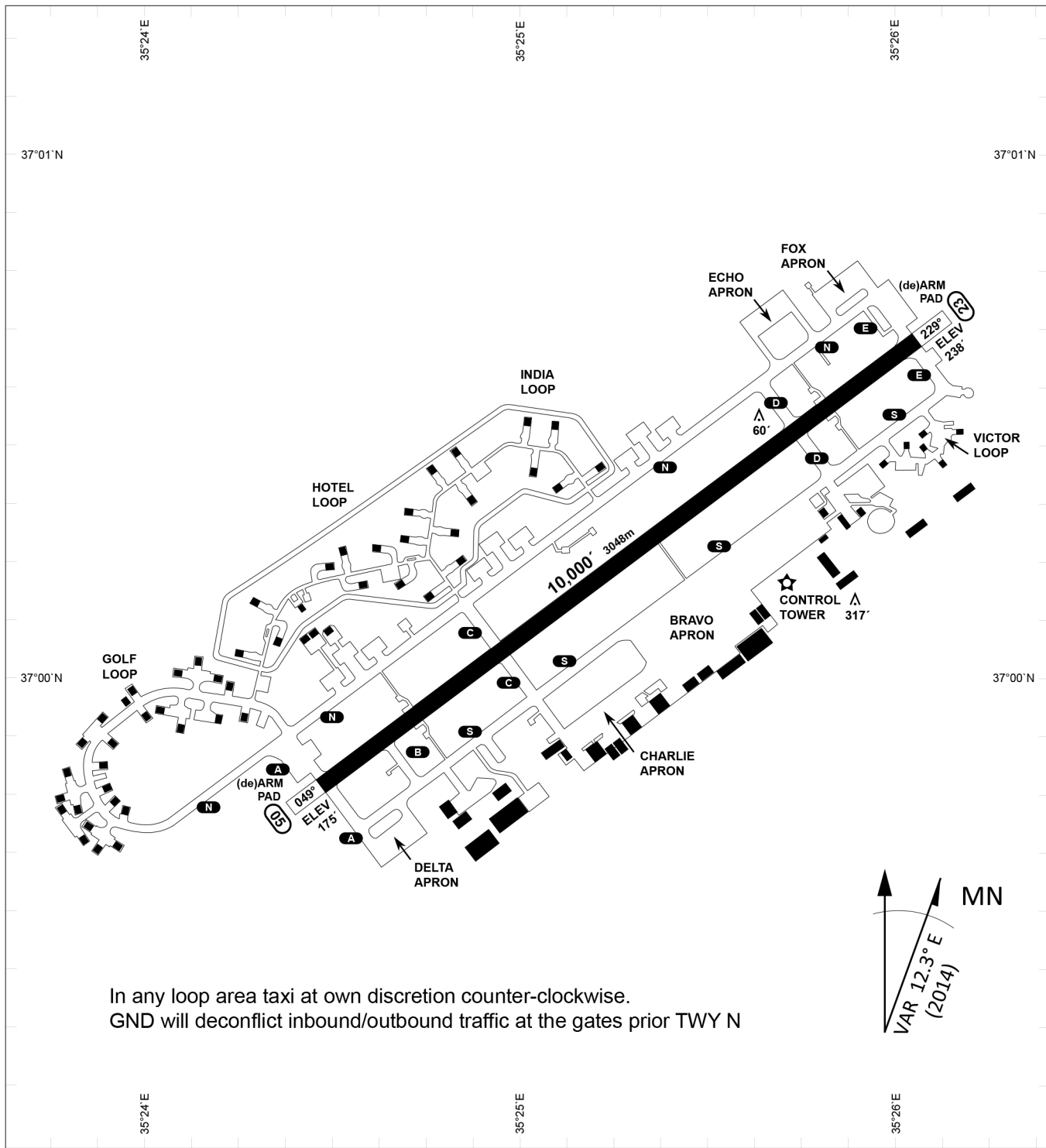
Pass entry EAGLE / TIGER / FALCON at 2500',
pass INITIAL at 2000' break to the south at 2000' pattern altitude.

HELICOPTER ROUTES

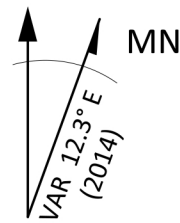
Pass entry EAGLE / TIGER / FALCON at 1000' or below, pass INITIAL at 1000' break to the south at 1000' pattern altitude.

DEPARTURE ALL DIRECTIONS

pass DER below 1500ft



In any loop area taxi at own discretion counter-clockwise.
 GND will deconflict inbound/outbound traffic at the gates prior TWY N



PAR	RWY	CAT	MINIMA	ARP	ELEV	Scale 1:35'500 0 300 600 900 1200 1500 [m] 0 1000 2000 3000 4000 5000 [ft]
SRA	21L 3R 21R 3L	A B D E A B D E A C D E A C D E	2057 - 0.8 200 (200-0.8/1.6) GS 3° 2057 - 0.8 200 (200-0.8/1.6) GS 3° 2257 - 1.2 350 (350-1.2/1.6) 2257 - 1.2 350 (350-1.2/1.6)	37°0'56.000" N 35°26'53.000" E	1857 [ft] 566 [m]	

RWY	TORA	TORA from D	TORA from B	COURSE	PSN THR	ALS
23	10,000 [ft] 3048 [m]	8,000 [ft] 2438 [m]		235°	37°00.611'N 035°26.368'E	⊙
05	10,000 [ft] 3048 [m]		9,000 [ft] 2743 [m]	055°	36°59.043'N 035°24.760'E	⊙

ATIS	INCIRLIK GROUND	INCIRLIK TOWER	CONTROL	TACAN	ILS RWY 05	ILS RWY 23
377.475	371.350 123.020	360.100 121.100	337.800	DAN21x	109.3MHz	111.7MHz