

MISSION DATA CARD

OPORD		Callsign		Mission		Date/Time		
3078/2024		Edelweiss 1		Training		152010JUL24		
Task						Freq		
AO						264.15		
Departure				Recovery				
RWY28 VFR				ILS 28				
#	Callsign		Pilot		IFF	TCN	LSR	NET
-1	Edelweiss 1-1		Snowbird		1711	1Y	1711	

LOADOUT

A/A	2xA120C, 2xA9X				GUN	100% HEI-T	
A/G					CHF	60	
POD	HTS, TGP				FLR	60	
TKS	3xFT300				FUEL	100%	

TOLD

	Takeoff	Target	Joker	Bingo	Land
FUEL	13172				

AIRBASES

	Name	TCN	ATIS	GND	TWR	RWY	Elev	ILS
Dep	Akrotiri AFB	107X	288.2	240.1	339.85	28	62	109.7
Arr	Akrotiri AFB	107X	288.2	240.1	339.85	28	62	109.7
Div	Incirlik AFB	21X	377.47 5	371.35	360.1	5	190	

FLIGHTPLAN

#	Name	Navaid/Coords/DME	ALT	TOT
1	PAPA	N34 39 53.476 E032 47 42.962	5000	
2	PAPHOS	N34 46 06.886 E032 29 24.110	10000	
3	AKAMAS	N35 01 59.091 E032 18 34.419	10000	
4	MT OLYMPUS	N34 56 16.465 E032 53 25.382	10000	
5	NICOSIA	N35 07 45.098 E033 18 23.063	10000	
6	KYRENIA	N35 19 36.353 E033 18 05.538	10000	
7	BAPAX	N35 32 25.200 E034 10 05.760	10000	
8	GECITKALE	N35 14 25.124 E033 47 35.753	10000	
9	KINGSFIELD	N34 59 51.538 E033 46 27.109	10000	
10	ECHO	N34 41 46.067 E033 09 39.793	5000	
11	RAF Akrotiri	N34 35 26 E032 59 17	65.61679 84008789	

SUPPORT**Tanker**

Callsign	TCN	Freq	ALT	TAS
ARCO 1	22Y	319.8	FL222	400
Pos	ARCO1: (N3701 E03457)			

OTHER FLIGHTS

Callsign	Mission	Airframe	Freq	TCN	Grpld	Laser
Nazgul 6	CAP	4x F-15E	262.45	1/64		156X
AO	ETTR	Task	BVR Maneuver Training			
Rattler 2	Training	3x AH-64D	133.5	1/64		125X
AO		Task				
Edelweiss 6	Training	2x F/A-18C	134.65	1/64	40	166X
AO		Task				
Edelweiss 2	Training	4x A-10C	264.25	19/82	21	165X
AO		Task				

RADIO CHANNELS

#	Freq	Name
1		Flight/Squadron specific
2	288.2	Akrotiri ATIS
3	240.1	Akrotiri Ground
4	339.85	Aktrotiri Tower
5	335.05	Akrotiri Approach
6	360.1	Incirlik Tower
7	371.35	Incirlik Ground
8	377.475	Incirlik ATIS
9		No Preset
10	127.3	Paphos ATIS
11	353.8	Paphos Tower
12	304.0	CVN-73 George Washington
13	302.0	LHA-1 Tarawa
14	259.0	CV-59 Forrestal
15		No Preset
16	377.8	Overlord
17	265.0	KC-135 Texaco-1 medium/slow
18	319.8	KC-135 Arco-1
19	360.8	KC-135MPRS Arco-2
20	256.0	S-3B Recovery Tanker

RAMROD

0	1	2	3	4	5	6	7	8	9
O	U	T	W	E	A	R	I	N	G

KTC 1400 C

	0	1	2	3	4	5	6	7	8	9
A	OWVS	MQA	PBU	HL	TE	JKX	CR	DF	YN	IG
B	BHDV	YOW	JRG	AM	IS	NKL	FE	CP	QX	TU
C	MGHY	NLP	DOA	TI	WF	EBJ	QK	RS	XC	UV
D	JRUF	GMX	QSO	YW	NV	ACB	PI	LT	HK	ED
E	GTWR	XCP	BLF	OJ	VM	NYU	AQ	EI	DS	KH
F	WTLQ	MKY	SNO	VE	AB	XCU	PF	GH	JR	ID
G	FRGK	CAU	SWX	BO	EY	TVI	NL	QM	PH	JD
H	CQSD	NMT	JIF	VR	BY	UHA	KW	XG	PO	EL
I	MPL	IFO	TSD	RK	VG	ACY	XH	BU	WN	JQ
J	TYFN	VWQ	KAI	JL	PX	EOM	RD	UB	CH	SG
K	UIMB	LTA	RSN	PX	YC	JFG	KH	VE	DW	OQ
L	BERG	CMX	PUL	KO	HF	ISJ	DA	WY	NV	QT
M	VDJC	KRY	MOL	HN	GW	PEF	IT	UA	BQ	SX
N	CLXJ	QPR	BFO	SI	KD	NVU	ME	AW	TH	YG
O	JOPH	VMI	KTX	YG	SR	BUC	LE	QF	AN	DW
P	QFJK	PTW	YCN	RV	HL	ISA	DU	EX	MB	GO
Q	BJIG	ATQ	DXS	UE	PW	FCL	RO	KN	HY	VM
R	OYTS	CGR	JIA	WN	MH	LVK	FP	BE	DX	QU
S	GSDN	JXB	MOV	KL	QF	IAT	HE	WC	UP	RY
T	FLHC	OSY	QTI	ED	AB	UMR	NV	WP	GX	JK
U	NFUP	KGB	CYO	IQ	AX	MHE	ST	LW	JR	VD
V	WRKH	CGN	QVS	EI	PF	BMO	DX	UT	LJ	YA
W	CDOW	BKE	HXS	TA	GF	YMU	IQ	LV	RN	PJ
X	IVAB	KUN	YGQ	ML	CS	JOE	HP	TX	WD	FR
Y	FMLP	QRJ	YSG	HW	NT	AXO	KI	DU	CV	EB

NAVAIDS

Id	Name	Channel	Position	Elevation
DAN	Incirlik	21	N37 00.950 E035 26.883	243
AKR	Akrotiri	107	N34 34.765 E032 57.769	147
PHA	Paphos	79	N34 42.997 E032 28.963	35
RMD	Ramat David	84	N32 39.892 E035 11.265	136
OS66	Kuweires Military Aviation Institute	36	N36 11.362 E037 34.226	1200

**FOR DCS
 USE ONLY**

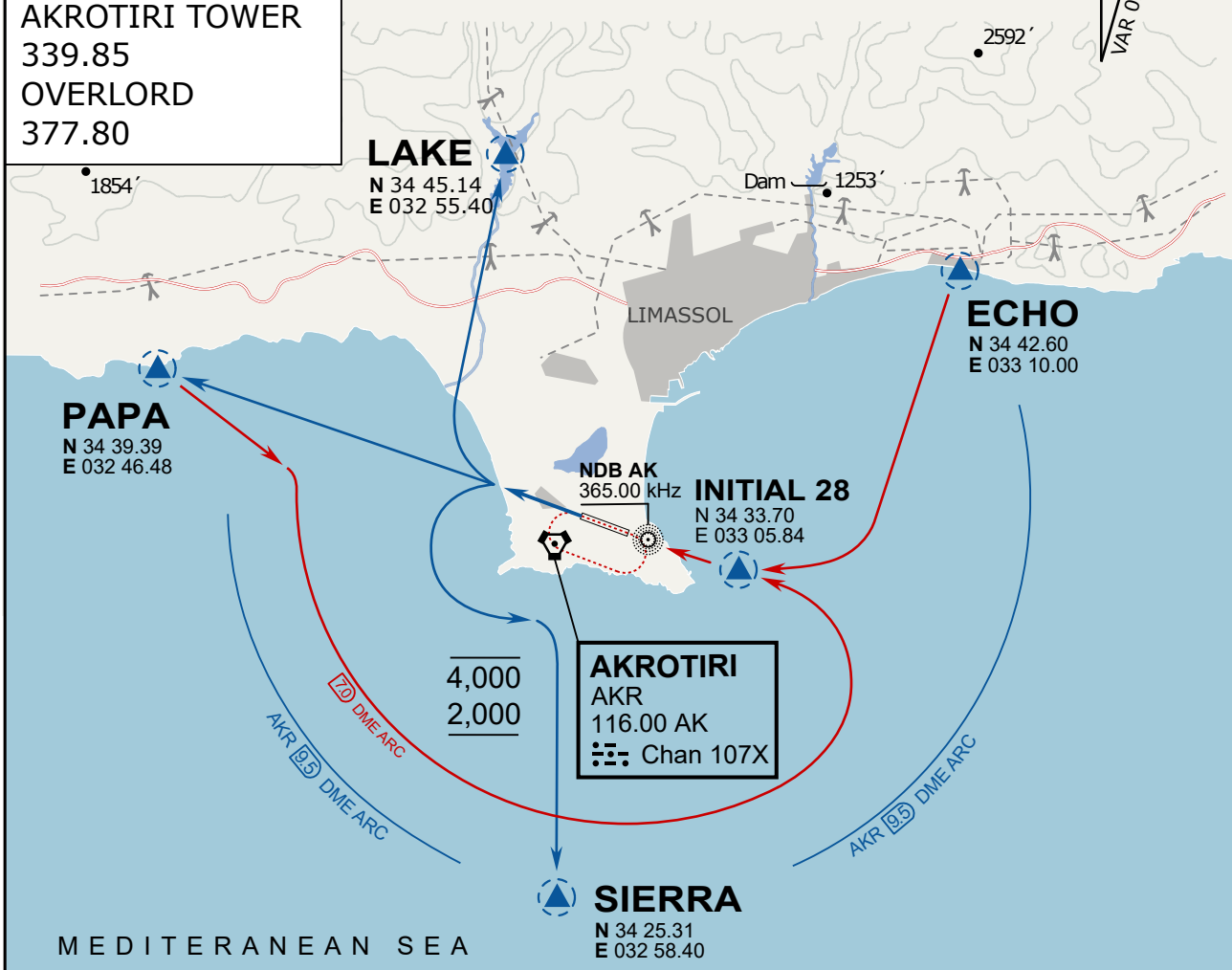


ATIS	AKROTIRI GND	AKROTIRI TWR	OVERLORD CONTROL	TACAN	FIELD ELEVATION
288.20 MHz	240.10 122.10	339.85 130.075	377.8	AKR 107X	75 [ft] 23 [m]

ATIS
 288.20
AKROTIRI GROUND
 240.10
AKROTIRI TOWER
 339.85
OVERLORD
 377.80

NOT FOR CIVIL USE

CAUTION: If unable to comply
 with restrictions advise ATC
 prior to departure.



ARR / DEP ROUTE DESCRIPTION

STRAIGHT-IN RWY28

Pass ENTRY at 5.000' MSL or below, pass INITIAL at 1.500' MSL or below.

OVERHEAD BREAK RWY28

Pass ENTRY at 5.000' MSL or below, pass INITIAL at 2.000' MSL, break to the south.

DEPARTURE GENERAL

Pass Departure end of runway at 1.000' or below.

DEP RWY28 PAPA: Fly straight ahead to exit.

DEP RWY28 LAKE: Fly straight ahead until coast, than right turn direct exit.

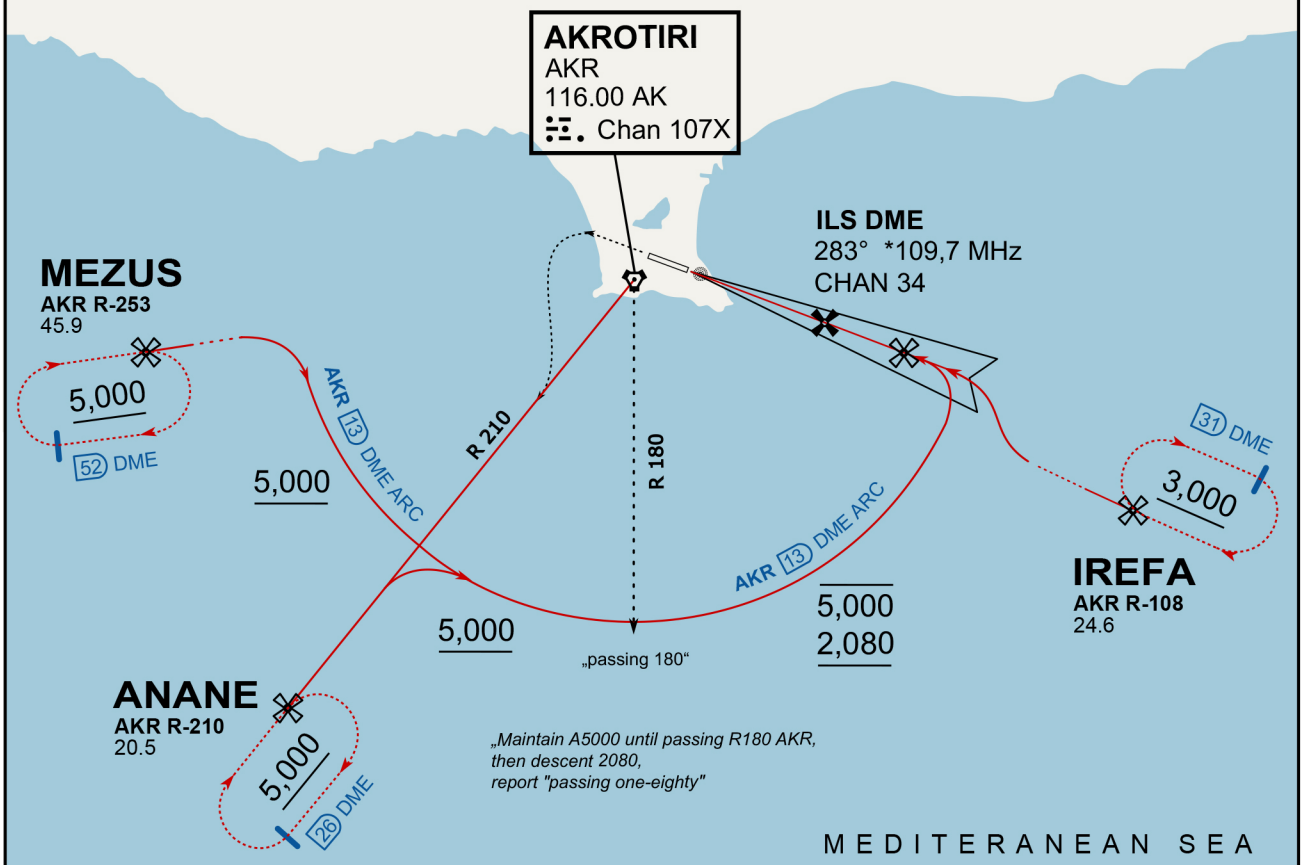
DEP RWY28 SIERRA: Fly straight ahead until coastline, then climbing left turn, intercept AKR R-180 to exit.

DEP ECHO: no exit.

ATIS
288.200
AKROTIRI GROUND
122.100
AKROTIRI TOWER
339.850
APP (OVERLORD)
377.800

NOT FOR CIVIL USE

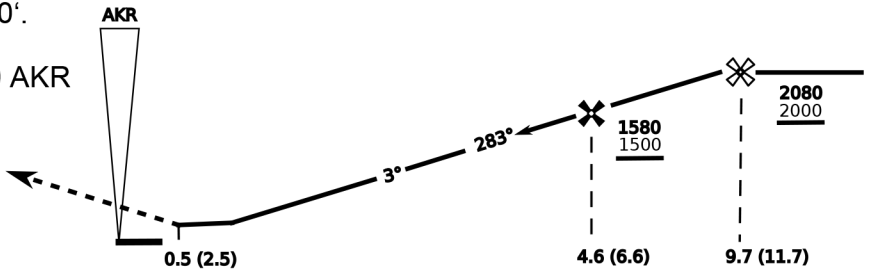
CAUTION: If unable to comply with restrictions advise ATC prior to departure.



„Maintain A5000 until passing R180 AKR, then descent 2080, report "passing one-eighty"“

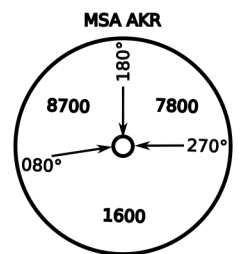
MEDITERANEAN SEA

On Track 283° climb A 4.000'. passing 2.080' (2.000' AAL) turn left and intercept R-210 AKR to ANANE. Enter ANANE Holding.



THR Elev 74ft DME I-AK (DME AKR)

CAT	ILS/DME	LOC/DME	CIRCLE	GS (kts)				
				80	120	150	180	210
A	280 (200)	390 (320) 800m	680 (610) 1500m	FAF - MAPt (4.1NM) 3:06 2:03 1:38 1:22 1:10				
B	800m		680 (610) 1600m	RoD (fpm) 420 640 800 950 1110				
C	290 (210) 800m		780 (710) 2400m	- CIRCLING PROHIBITED N of Rwy - no AUTO coupled ILS approaches - when established on ILS contact Tower - Timing not Auth to define MAPt				
D	310 (230) 800m		780 (710) 3600m					
E	340 (260) 800m		1380 (1310) 3600m					



ATIS
377.475 (#8)

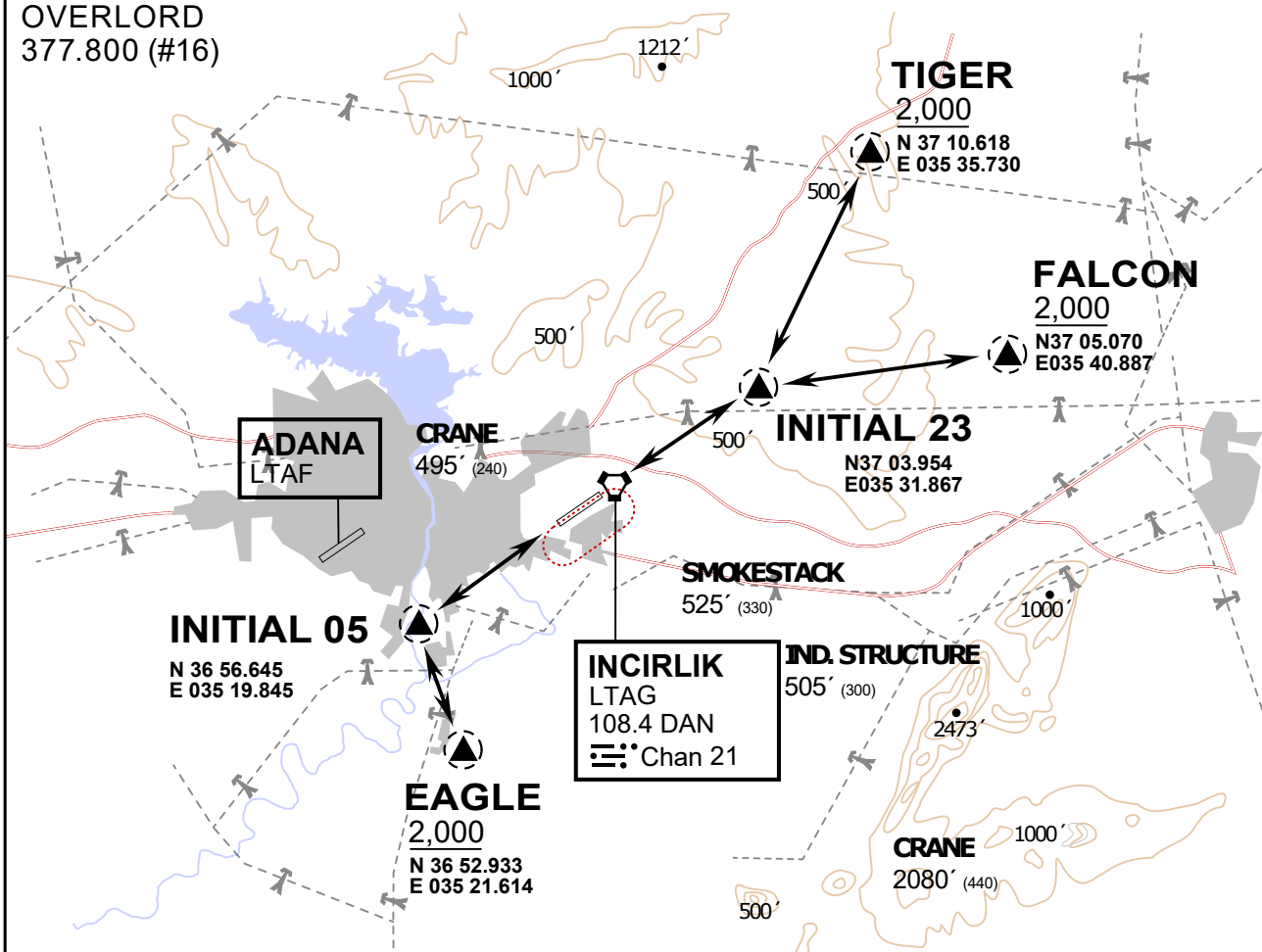
INCIRLIK GROUND
371.3500 (#7)

INCIRLIK TOWER
360.100 (#6)

OVERLORD
377.800 (#16)

NOT FOR CIVIL USE

CAUTION: If unable to comply with restrictions advise ATC prior to departure.



vJaBoG32 ETTR NAV CHART

ARR / DEP ROUTE DESCRIPTION

STRAIGHT-IN RWY 05 / 23

Pass entry EAGLE / TIGER / FALCON at 2000' and INITIAL at 1500'

OVERHEAD BREAK RWY 05 / 23

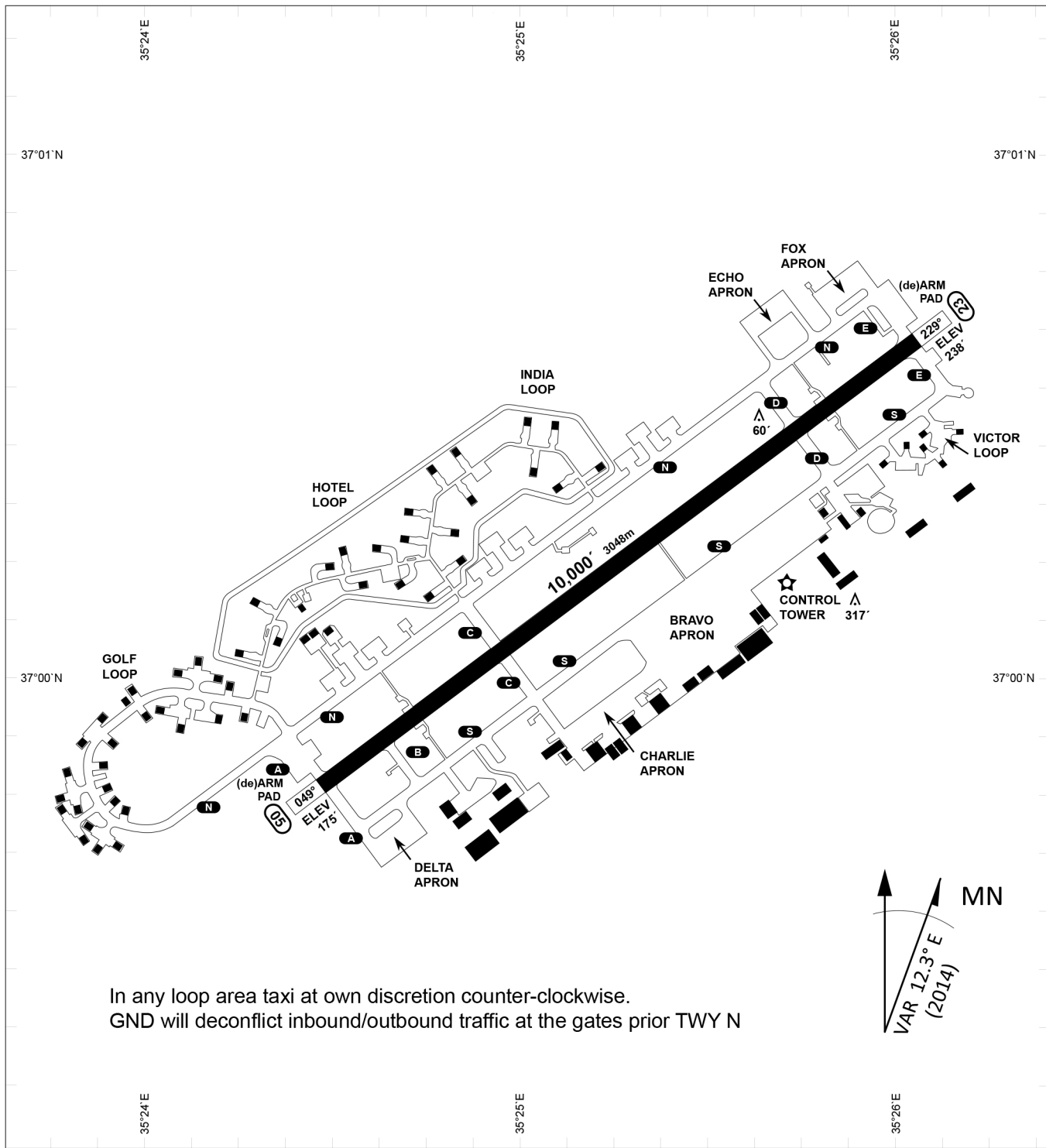
Pass entry EAGLE / TIGER / FALCON at 2500', pass INITIAL at 2000' break to the south at 2000' pattern altitude.

HELICOPTER ROUTES

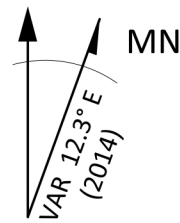
Pass entry EAGLE / TIGER / FALCON at 1000' or below, pass INITIAL at 1000' break to the south at 1000' pattern altitude.

DEPARTURE ALL DIRECTIONS

pass DER below 1500ft



In any loop area taxi at own discretion counter-clockwise.
 GND will deconflict inbound/outbound traffic at the gates prior TWY N



PAR	RWY	CAT	MINIMA	ARP	ELEV	Scale 1:35'500 0 300 600 900 1200 1500 [m] 0 1000 2000 3000 4000 5000 [ft]
SRA	21L 3R 21R 3L	A B D E A B D E A C D E A C D E	2057 - 0.8 200 (200-0.8/1.6) GS 3° 2057 - 0.8 200 (200-0.8/1.6) GS 3° 2257 - 1.2 350 (350-1.2/1.6) 2257 - 1.2 350 (350-1.2/1.6)	37°0'56.000" N 35°26'53.000" E	1857 [ft] 566 [m]	

RWY	TORA	TORA from D	TORA from B	COURSE	PSN THR	ALS
23	10,000 [ft] 3048 [m]	8,000 [ft] 2438 [m]		235°	37°00.611'N 035°26.368'E	⊙
05	10,000 [ft] 3048 [m]		9,000 [ft] 2743 [m]	055°	36°59.043'N 035°24.760'E	⊙

ATIS	INCIRLIK GROUND	INCIRLIK TOWER	CONTROL	TACAN	ILS RWY 05	ILS RWY 23
377.475	371.350 123.020	360.100 121.100	337.800	DAN21x	109.3MHz	111.7MHz