

MISSION DATA CARD

OPORD		Callsign		Mission		Date/Time		
3077/2024		Raptor		Training		132118JUL24		
Task						Freq		
AO						134.0		
Departure				Recovery				
RWY28 VFR				RWY10 VFR				
#	Callsign		Pilot		IFF	TCN	LSR	NET
-1	Raptor-1		Jinx		1601	1Y	1621	

LOADOUT

A/A						GUN	
A/G						CHF	
POD						FLR	
TKS						FUEL	

TOLD

	Takeoff	Target	Joker	Bingo	Land
FUEL	7163				

AIRBASES

	Name	TCN	ATIS	GND	TWR	RWY	Elev	ILS
Dep	Akrotiri AFB	107X	288.2	240.1	339.85	28	62	109.7
Arr	Akrotiri AFB	107X	288.2	240.1	339.85	28	62	109.7

FLIGHTPLAN

#	Name	Navaid/Coords/DME	ALT	TOT
1	ECHO	N34 42.600 E033 10	5000	
2	PAPA	N34 39.390 E032 46.480	5000	

SUPPORT**Tanker**

Callsign	TCN	Freq	ALT	TAS
SHELL 3	93Y	278.75	FL170	215
Pos	SHELL3: (N3436 E03419)			

OTHER FLIGHTS

Callsign	Mission	Airframe	Freq	TCN	Grpld	Laser
Edelweiss 1	Training	1x F-16C	264.15	1/64		171X
AO		Task				

RADIO CHANNELS

#	Freq	Name
1		Flight/Squadron specific
2	288.2	Akrotiri ATIS
3	240.1	Akrotiri Ground
4	339.85	Aktrotiri Tower
5	335.05	Akrotiri Approach
6	360.1	Incirlik Tower
7	371.35	Incirlik Ground
8	377.475	Incirlik ATIS
9		No Preset
10	127.3	Paphos ATIS
11	353.8	Paphos Tower
12	304.0	CVN-73 George Washington
13	302.0	LHA-1 Tarawa
14	259.0	CV-59 Forrestal
15		No Preset
16	377.8	Overlord
17	265.0	KC-135 Texaco-1 medium/slow
18	319.8	KC-135 Arco-1
19	360.8	KC-135MPRS Arco-2
20	256.0	S-3B Recovery Tanker

RAMROD

0	1	2	3	4	5	6	7	8	9
M	A	G	N	I	T	U	D	E	S

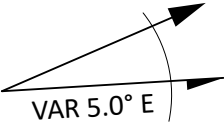
KTC 1400 C

	0	1	2	3	4	5	6	7	8	9
A	QRHO	MVB	SUP	NG	EI	XCK	DT	LJ	WF	AY
B	KBYA	SIL	EGC	JQ	WO	TMX	FP	RD	UV	HN
C	TMXV	ISR	FPD	OG	CH	EQA	YL	JK	UW	NB
D	KTGI	VQA	EYJ	XH	UB	SMD	FC	PW	ON	LR
E	UIKL	DSB	CGM	RF	EY	JTP	HW	VO	XN	AQ
F	OXFU	CIQ	WBL	ES	RH	MJP	KN	YD	TG	AV
G	XQRY	STV	EAH	PW	NO	IBJ	GL	DM	FC	UK
H	LWUE	GOS	BMR	KJ	QN	XFY	DP	CI	TA	HV
I	IQJB	GHE	PXL	FU	TW	NMD	YA	OV	KC	SR
J	JOKL	FPH	BSD	TW	EA	MQI	CN	YR	GX	VU
K	YLWI	JNF	GDO	MK	EH	UVX	TR	QA	PS	BC
L	LCTE	KVJ	FRQ	DH	IA	SUM	XN	BW	GP	OY
M	HBKJ	PLO	NCI	SU	QA	DMY	GX	VW	FT	ER
N	RPNI	EAY	TCW	OV	XB	FGM	HK	LJ	DU	SQ
O	GJIW	BKD	THE	PQ	VX	OUA	YF	RC	SM	LN
P	YDEB	RJX	SVN	UT	FW	QOI	GM	CA	PK	LH
Q	SMUW	PHF	YDC	OI	BA	KRJ	XE	TG	VN	QL
R	XPMD	FKY	QIJ	AH	NT	VWB	LS	CG	EU	RO
S	ANCJ	SPE	DXB	LR	YI	VQG	KM	OF	WH	TU
T	YVMC	SLH	XOA	QB	KI	TNJ	UG	PF	WE	DR
U	NSFO	CLV	BJY	TP	AQ	GMU	EH	IK	DR	XW
V	ISFL	PJO	CRD	TQ	BW	XKE	MA	GY	NU	HV
W	WMVN	HQX	OFE	LT	YA	KGC	US	PB	RD	JI
X	WUKY	ESF	JCV	LD	AM	RPT	NI	BQ	XG	HO
Y	TQCP	LVD	UBM	NG	AE	KWF	SH	JY	IX	OR

NAVAIDS

Id	Name	Channel	Position	Elevation
DAN	Incirlik	21	N37 00.950 E035 26.883	243
AKR	Akrotiri	107	N34 34.765 E032 57.769	147
PHA	Paphos	79	N34 42.997 E032 28.963	35
RMD	Ramat David	84	N32 39.892 E035 11.265	136
OS66	Kuweires Military Aviation Institute	36	N36 11.362 E037 34.226	1200

**FOR DCS
 USE ONLY**

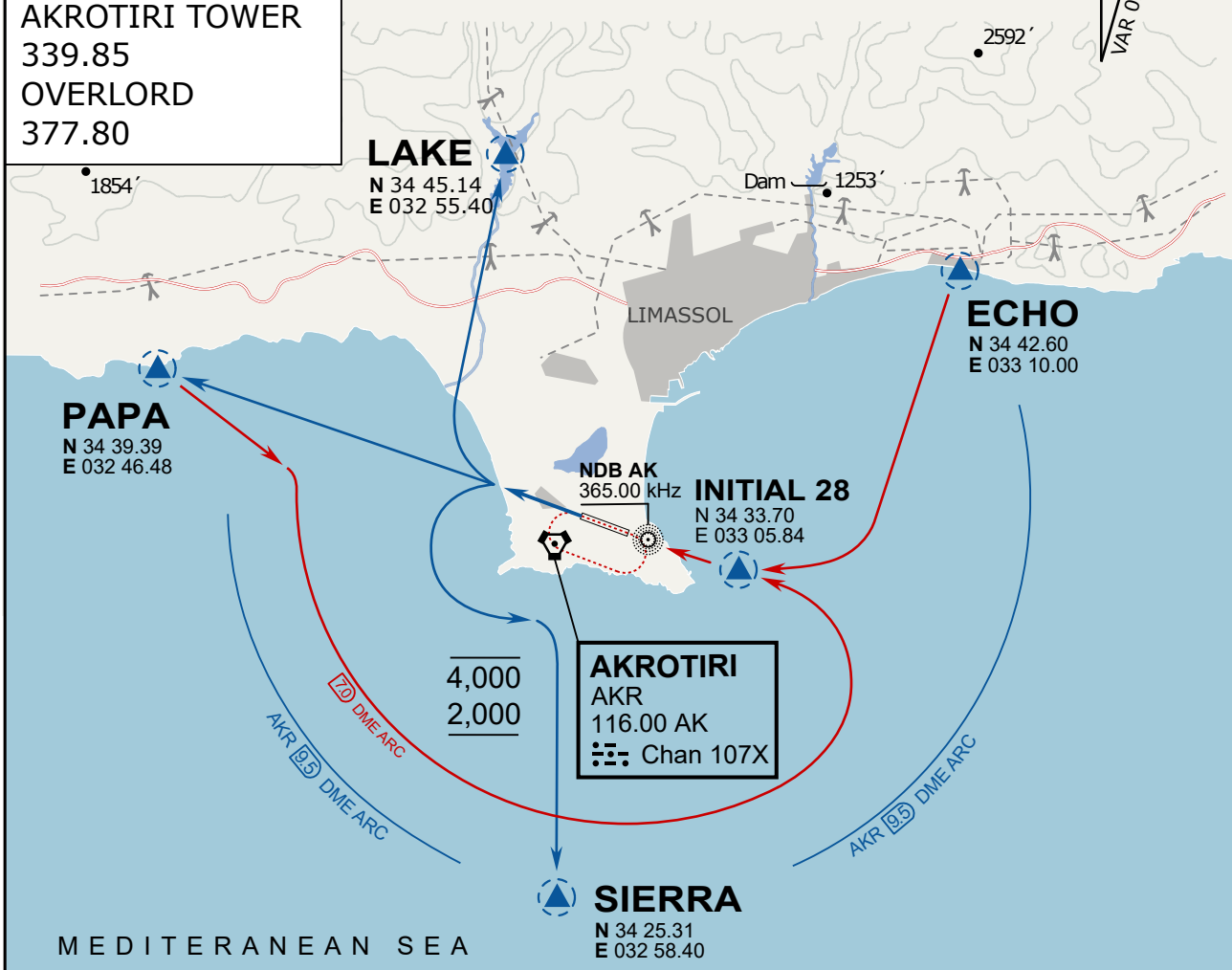


ATIS	AKROTIRI GND	AKROTIRI TWR	OVERLORD CONTROL	TACAN	FIELD ELEVATION
288.20 MHz	240.10 122.10	339.85 130.075	377.8	AKR 107X	75 [ft] 23 [m]

ATIS
 288.20
AKROTIRI GROUND
 240.10
AKROTIRI TOWER
 339.85
OVERLORD
 377.80

NOT FOR CIVIL USE

CAUTION: If unable to comply with restrictions advise ATC prior to departure.



ARR / DEP ROUTE DESCRIPTION

STRAIGHT-IN RWY28

Pass ENTRY at 5.000' MSL or below, pass INITIAL at 1.500' MSL or below.

OVERHEAD BREAK RWY28

Pass ENTRY at 5.000' MSL or below, pass INITIAL at 2.000' MSL, break to the south.

DEPARTURE GENERAL

Pass Departure end of runway at 1.000' or below.

DEP RWY28 PAPA: Fly straight ahead to exit.

DEP RWY28 LAKE: Fly straight ahead until coast, than right turn direct exit.

DEP RWY28 SIERRA: Fly straight ahead until coastline, then climbing left turn, intercept AKR R-180 to exit.

DEP ECHO: no exit.

ATIS

288.20

AKROTIRI GROUND

240.10

AKROTIRI TOWER

339.85

OVERLORD

377.80

NOT FOR CIVIL USE

CAUTION: If unable to comply
with restrictions advise ATC
prior to departure.

ARR / DEP ROUTE DESCRIPTION

ARRIVAL GENERAL

Pass Entry at 5.000' or below. Overhead Brake RWY 10: pass INITIAL 10 at 2.000' MSL.
Straight-in RWY 10 : pass INITIAL 1.500' or below.

ARR RWY10 PAPA / LAKE: Direct initial.

ARR RWY10 SIERRA: Intercept ARC 7 of AKR to INITIAL 10.

ARR ECHO: no ENTRY.

DEPARTURE GENERAL

Pass Departure end of runway at 1.000' AGL or below. Keep RWY heading until coastline.

DEP RWY10 ECHO: Direct EXIT.

DEP RWY10 SIERRA: Climbing right turn, intercept R180 AKR to Sierra.

DEP RWY10 PAPA: Climbing right turn until R180 AKR, then direct Papa

DEP LAKE: no EXIT.