

MISSION DATA CARD

OPORD		Callsign		Mission		Date/Time	
3073/2024		Nazgul 6		CAS		182000JUL24	
Task	CAS Maneuver					Freq	
AO	Northern Syria					262.45	
Departure				Recovery			
VFR				VFR			
#	Callsign	Pilot		IFF	TCN	LSR	NET
-1	Nazgul 6-1	Striver/Uta		1161	1Y	1561	

LOADOUT

A/A	2xA9M, 2xA120C				GUN	100% SAPHEI
A/G	3xG54, 4xG12				CHF	120
POD	TGT, NAV				FLR	60
TKS					FUEL	100%

TOLD

	Takeoff	Target	Joker	Bingo	Land
FUEL	22588				

AIRBASES

	Name	TCN	ATIS	GND	TWR	RWY	Elev	ILS
Dep	Incirlik AFB	21X	377.47 5	371.35	360.1	5	190	
Arr	Incirlik AFB	21X	377.47 5	371.35	360.1	5	190	

FLIGHTPLAN

#	Name	Navaid/Coords/DME	ALT	TOT
1	INITIAL 23	N37 03.956 E035 31.866	1500	
2	TIGER	N37 10.618 E035 35.732	2000	
3	FALCON	N37 05.067 E035 40.888	2000	
4	IP Fruit	N35 40.072 E036 16.050	15000	
5	ECHO	N35 47.833 E036 18.001	692	
6	TRP 1	N35 49.246 E036 17.954	1270	
7	TRP 2	N35 46.549 E036 19.152	604	
8	TRP 3	N35 46.226 E036 21.383	646	
9	JTAC WILD-4	N35 48.489 E036 23.073	1860	
10	EAGLE	N36 52.938 E035 21.611	2500	
11	INITIAL 05	N36 56.654 E035 19.839	2000	

NOTES

JTAC WILD-4 135.75 MHz

Weather:

0800J INC

QNH 30.04

Wind 073/8

FEW/SCT 8/10, SCT 23/24

TRP1 ist eine T-Shaped Intersection an Anfang der Route

Point Echo ist die Mittlere von drei aufeinander kleinen Brücken

TRP2 ist am Ende der großen Brücke am See

TRP3 ist eine kleine Brücke vor der nächsten Siedlung

SUPPORT**Tanker**

Callsign	TCN	Freq	ALT	TAS
ARCO 1	22Y	319.8	FL222	400
	Pos	ARCO1: (N3701 E03457)		

AWACS

Callsign	Freq	ALT	Pos
OVERLORD2	377.8	FL320	N3713 E03643 - N3714 E03749

OTHER FLIGHTS

Callsign	Mission	Airframe	Freq	TCN	Grpld	Laser
Wild* 4	JTAC	1x Ground	135.75	1/64		170X
	AO		Task			
Balrog 7	CAS	2x F-15E	262.55	1/64		157X
	AO	Northern Syria	Task	CAS Maneuver		

RADIO CHANNELS

#	Freq	Name
1		Flight/Squadron specific
2	288.2	Akrotiri ATIS
3	240.1	Akrotiri Ground
4	339.85	Aktrotiri Tower
5	335.05	Akrotiri Approach
6	360.1	Incirlik Tower
7	371.35	Incirlik Ground
8	377.475	Incirlik ATIS
9		No Preset
10	127.3	Paphos ATIS
11	353.8	Paphos Tower
12	304.0	CVN-73 George Washington
13	302.0	LHA-1 Tarawa
14	259.0	CV-59 Forrestal
15		No Preset
16	377.8	Overlord
17	265.0	KC-135 Texaco-1 medium/slow
18	319.8	KC-135 Arco-1
19	360.8	KC-135MPRS Arco-2
20	256.0	S-3B Recovery Tanker

RAMROD

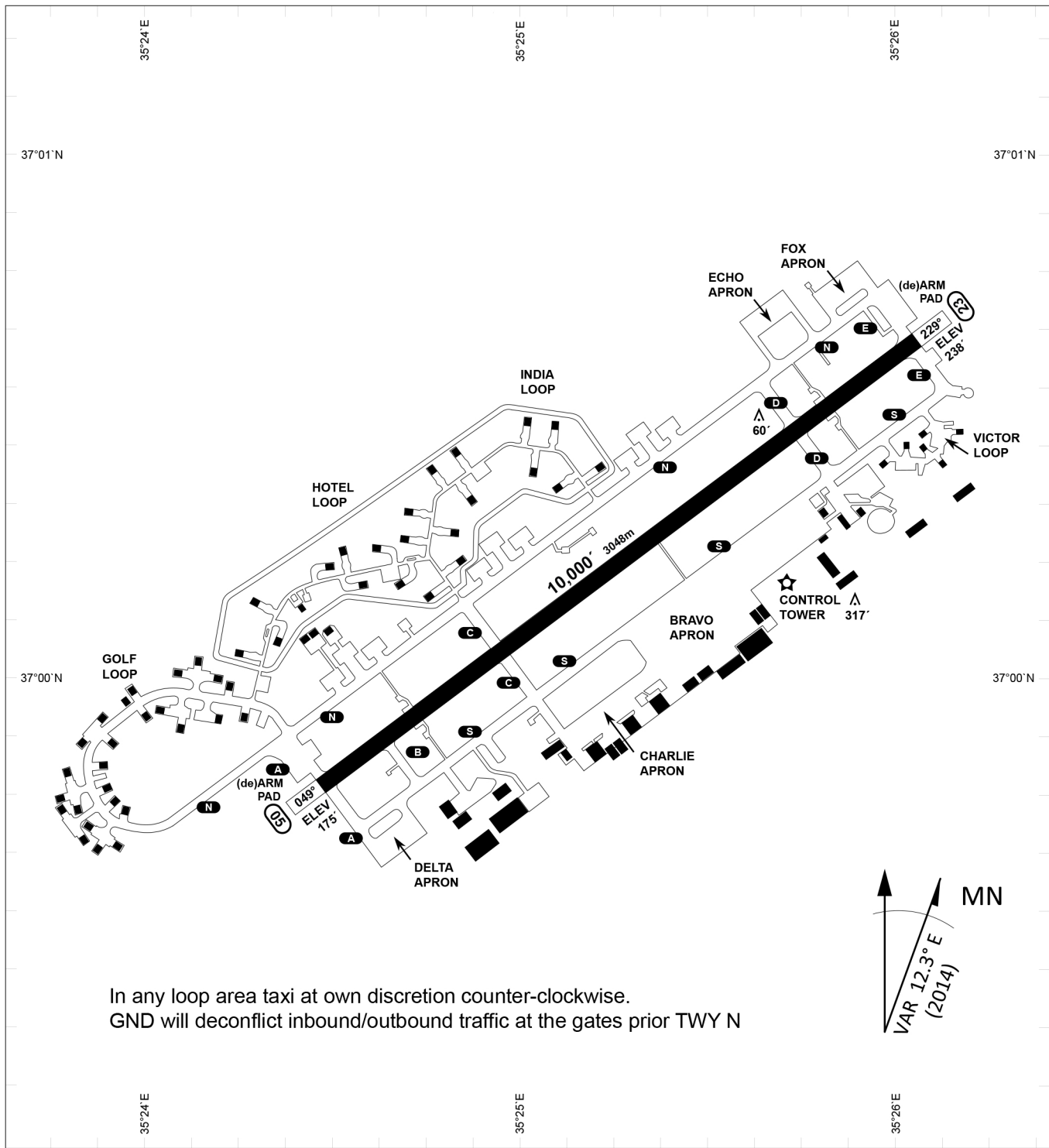
0	1	2	3	4	5	6	7	8	9
L	A	B	Y	R	I	N	T	H	S

KTC 1400 C

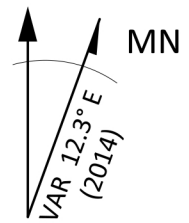
	0	1	2	3	4	5	6	7	8	9
A	OUAC	SHD	IBW	QN	VE	YKT	XJ	LR	PM	FG
B	EWYK	NFA	XGL	IS	JU	HDC	RP	BQ	OV	TM
C	ENCL	GXU	KAV	HT	PD	FWR	QB	OY	IS	JM
D	KTEU	GJY	OLQ	HP	ND	MWV	XC	IB	AF	SR
E	SWLH	DPF	IAN	QM	JV	UTG	YB	CO	XK	ER
F	MCAS	QEI	PWX	LV	NB	GFK	OY	JD	TU	HR
G	LODK	EPH	SCI	MF	UY	XAG	JW	BR	VT	QN
H	TOSE	NUW	BAM	JK	CF	VLR	QH	YX	DG	PI
I	BXDA	SER	KTH	CM	VN	IQY	LJ	UP	WG	OF
J	YBGS	QTN	WEL	KP	VO	DAJ	RU	CX	FI	MH
K	BWSK	YUM	GXN	OT	JH	ELI	AV	PR	FQ	CD
L	WIJX	KFE	RSY	UM	NH	GPC	BQ	AD	TO	VL
M	YCKB	RWA	PUD	QT	MJ	NEI	XV	GO	SF	LH
N	WUHQ	BMD	YPJ	XE	LC	SGO	VI	RT	KA	NF
O	YONI	KET	BCX	JF	SL	RAW	QV	HD	UM	GP
P	CXKH	WAO	RUP	GD	TL	QIN	FY	SM	EJ	VB
Q	LXIK	GSU	VFA	EM	NC	WHT	OP	RD	BY	QJ
R	GBTA	CXE	JQW	PO	KS	HMI	UY	RD	NV	FL
S	KGRH	IJT	MDS	XU	NB	YFV	PC	EQ	LA	WO
T	WXDP	IOL	FAV	CU	ER	NKS	HY	TM	BJ	GQ
U	CNPK	TGE	WMJ	LB	UH	XQR	OA	IF	VS	YD
V	EOJX	HVQ	KDI	WA	CT	MSB	PR	UN	YL	FG
W	OUHN	TWP	XSL	IR	VE	MYC	KB	DQ	GA	FJ
X	XESN	QMJ	CBD	RI	PH	LGK	WU	AT	OF	YV
Y	SWBO	JLD	ERF	GY	HN	XPK	QV	CM	UA	TI

NAVAIDS

Id	Name	Channel	Position	Elevation
DAN	Incirlik	21	N37 00.950 E035 26.883	243
AKR	Akrotiri	107	N34 34.765 E032 57.769	147
PHA	Paphos	79	N34 42.997 E032 28.963	35
RMD	Ramat David	84	N32 39.892 E035 11.265	136
OS66	Kuweires Military Aviation Institute	36	N36 11.362 E037 34.226	1200



In any loop area taxi at own discretion counter-clockwise.
 GND will deconflict inbound/outbound traffic at the gates prior TWY N



PAR	RWY	CAT	MINIMA	ARP	ELEV	Scale 1:35'500 0 300 600 900 1200 1500 [m] 0 1000 2000 3000 4000 5000 [ft]
SRA	21L 3R 21R 3L	A B D E A B D E A C D E A C D E	2057 - 0.8 200 (200-0.8/1.6) GS 3° 2057 - 0.8 200 (200-0.8/1.6) GS 3° 2257 - 1.2 350 (350-1.2/1.6) 2257 - 1.2 350 (350-1.2/1.6)	37°0'56.000" N 35°26'53.000" E	1857 [ft] 566 [m]	

RWY	TORA	TORA from D	TORA from B	COURSE	PSN THR	ALS
23	10,000 [ft] 3048 [m]	8,000 [ft] 2438 [m]		235°	37°00.611'N 035°26.368'E	⊙
05	10,000 [ft] 3048 [m]		9,000 [ft] 2743 [m]	055°	36°59.043'N 035°24.760'E	⊙

ATIS	INCIRLIK GROUND	INCIRLIK TOWER	CONTROL	TACAN	ILS RWY 05	ILS RWY 23
377.475	371.350 123.020	360.100 121.100	337.800	DAN21x	109.3MHz	111.7MHz

ATIS
377.475 (#8)

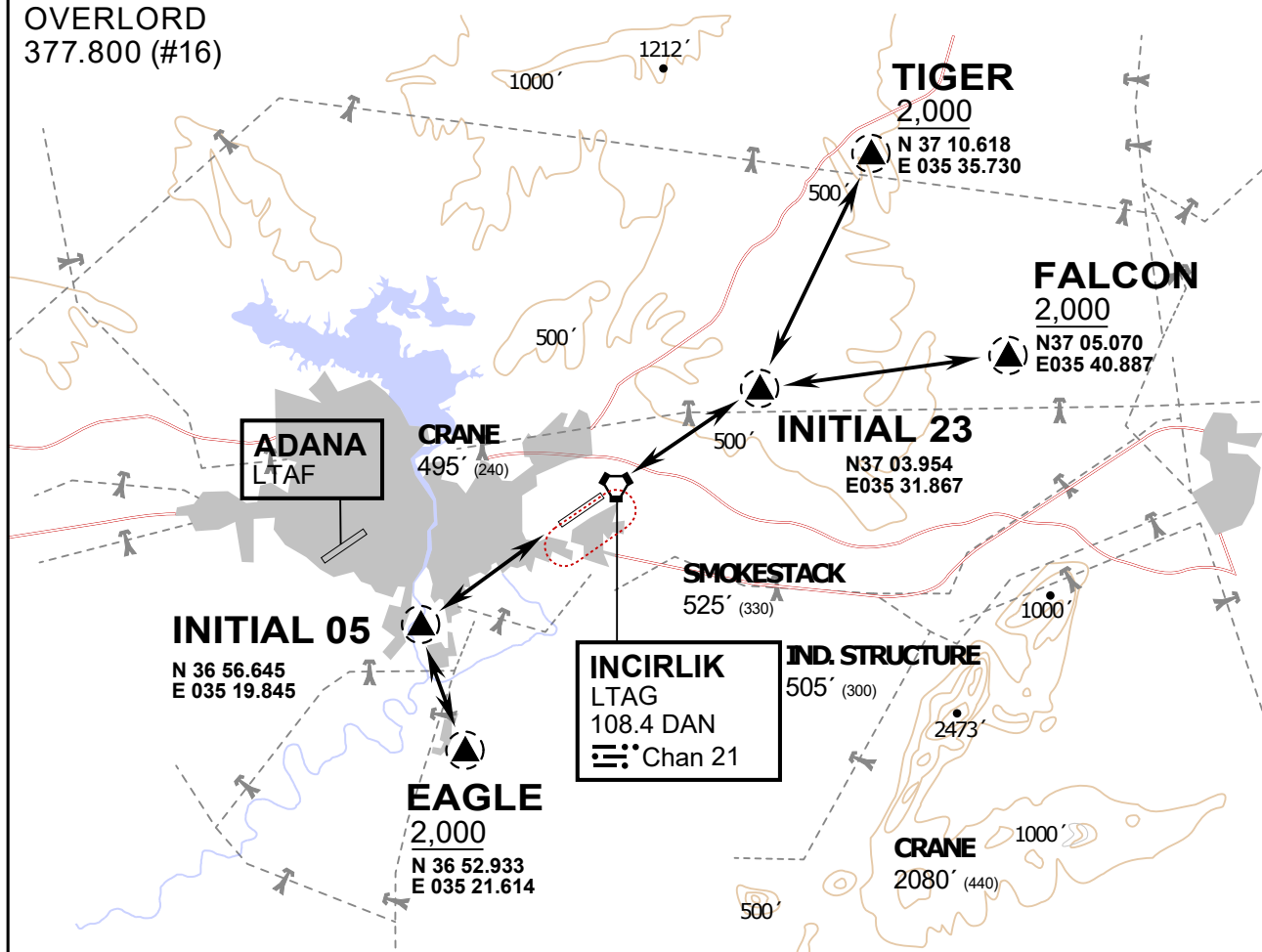
INCIRLIK GROUND
371.3500 (#7)

INCIRLIK TOWER
360.100 (#6)

OVERLORD
377.800 (#16)

NOT FOR CIVIL USE

CAUTION: If unable to comply
with restrictions advise ATC
prior to departure.



vJaBoG32 ETRR NAV CHART



ARR / DEP ROUTE DESCRIPTION

STRAIGHT-IN RWY 05 / 23

Pass entry EAGLE / TIGER / FALCON at 2000' and INITIAL at 1500'

OVERHEAD BREAK RWY 05 / 23

Pass entry EAGLE / TIGER / FALCON at 2500',
pass INITIAL at 2000' break to the south at 2000' pattern altitude.

HELICOPTER ROUTES

Pass entry EAGLE / TIGER / FALCON at 1000' or below, pass INITIAL at 1000' break to the south at 1000' pattern altitude.

DEPARTURE ALL DIRECTIONS

pass DER below 1500ft

ATIS
377.475 (#8)

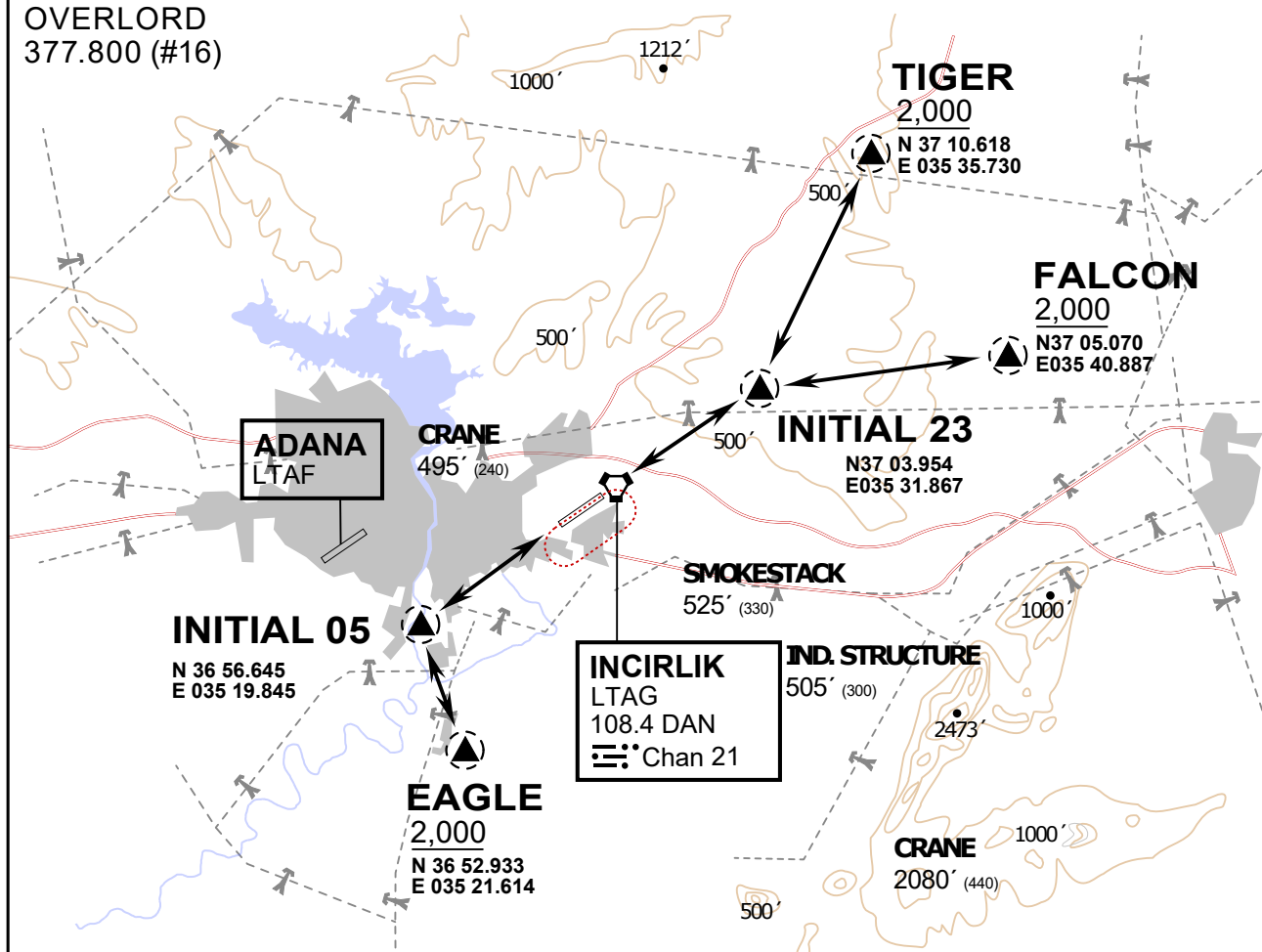
INCIRLIK GROUND
371.3500 (#7)

INCIRLIK TOWER
360.100 (#6)

OVERLORD
377.800 (#16)

NOT FOR CIVIL USE

CAUTION: If unable to comply
with restrictions advise ATC
prior to departure.



vJaBoG32 ETTR NAV CHART



ARR / DEP ROUTE DESCRIPTION

STRAIGHT-IN RWY 05 / 23

Pass entry EAGLE / TIGER / FALCON at 2000' and INITIAL at 1500'

OVERHEAD BREAK RWY 05 / 23

Pass entry EAGLE / TIGER / FALCON at 2500',
pass INITIAL at 2000' break to the south at 2000' pattern altitude.

HELICOPTER ROUTES

Pass entry EAGLE / TIGER / FALCON at 1000' or below, pass INITIAL at 1000' break to the south at 1000' pattern altitude.

DEPARTURE ALL DIRECTIONS

pass DER below 1500ft