

**MISSION DATA CARD**

OPORD		Callsign		Mission		Date/Time		
3072/2024		Edelweiss 1		DEAD		121245JUL24		
Task						Freq		
AO						264.15		
Departure				Recovery				
RWY28 VFR				ILS 28				
#	Callsign		Pilot		IFF	TCN	LSR	NET
-1	Edelweiss 1-1		Snowbird		1711	1Y	1711	

**LOADOUT**

A/A	2xA120C, 2xA9X				GUN	100% HEI-T	
A/G	4xG38				CHF	60	
POD	HTS, A184L, TGP				FLR	60	
TKS	2xFT300				FUEL	100%	

**TOLD**

	Takeoff	Target	Joker	Bingo	Land
FUEL	11169				

**AIRBASES**

	Name	TCN	ATIS	GND	TWR	RWY	Elev	ILS
Dep	Akrotiri AFB	107X	288.2	240.1	339.85	28	62	109.7
Arr	Akrotiri AFB	107X	288.2	240.1	339.85	28	62	109.7

**FLIGHTPLAN**

#	Name	Navaid/Coords/DME	ALT	TOT
1	ECHO	N34 42 31.443 E033 10 00.221	5000	
2	Orbit1	N34 49 53.885 E033 27 41.589	20000	
3	Orbit1	N34 55 45.632 E033 26 10.174	20000	
4	SA10.T1	N35 20 57.351 E033 17 29.976	38	
5	Mt. Olympus	N34 56 16.008 E032 51 46.759	15000	
6	PAPA	N34 39 43.973 E032 49 10.352	5000	

**SUPPORT****Tanker**

Callsign	TCN	Freq	ALT	TAS
SHELL 3	93Y	278.75	FL170	215
Pos	SHELL3: (N3436 E03419)			

**RADIO CHANNELS**

#	Freq	Name
1		Flight/Squadron specific
2	288.2	Akrotiri ATIS
3	240.1	Akrotiri Ground
4	339.85	Aktrotiri Tower
5	335.05	Akrotiri Approach
6	360.1	Incirlik Tower
7	371.35	Incirlik Ground
8	377.475	Incirlik ATIS
9		No Preset
10	127.3	Paphos ATIS
11	353.8	Paphos Tower
12	304.0	CVN-73 George Washington
13	302.0	LHA-1 Tarawa
14	259.0	CV-59 Forrestal
15		No Preset
16	377.8	Overlord
17	265.0	KC-135 Texaco-1 medium/slow
18	319.8	KC-135 Arco-1
19	360.8	KC-135MPRS Arco-2
20	256.0	S-3B Recovery Tanker

**RAMROD**

0	1	2	3	4	5	6	7	8	9
R	E	F	O	C	U	S	I	N	G

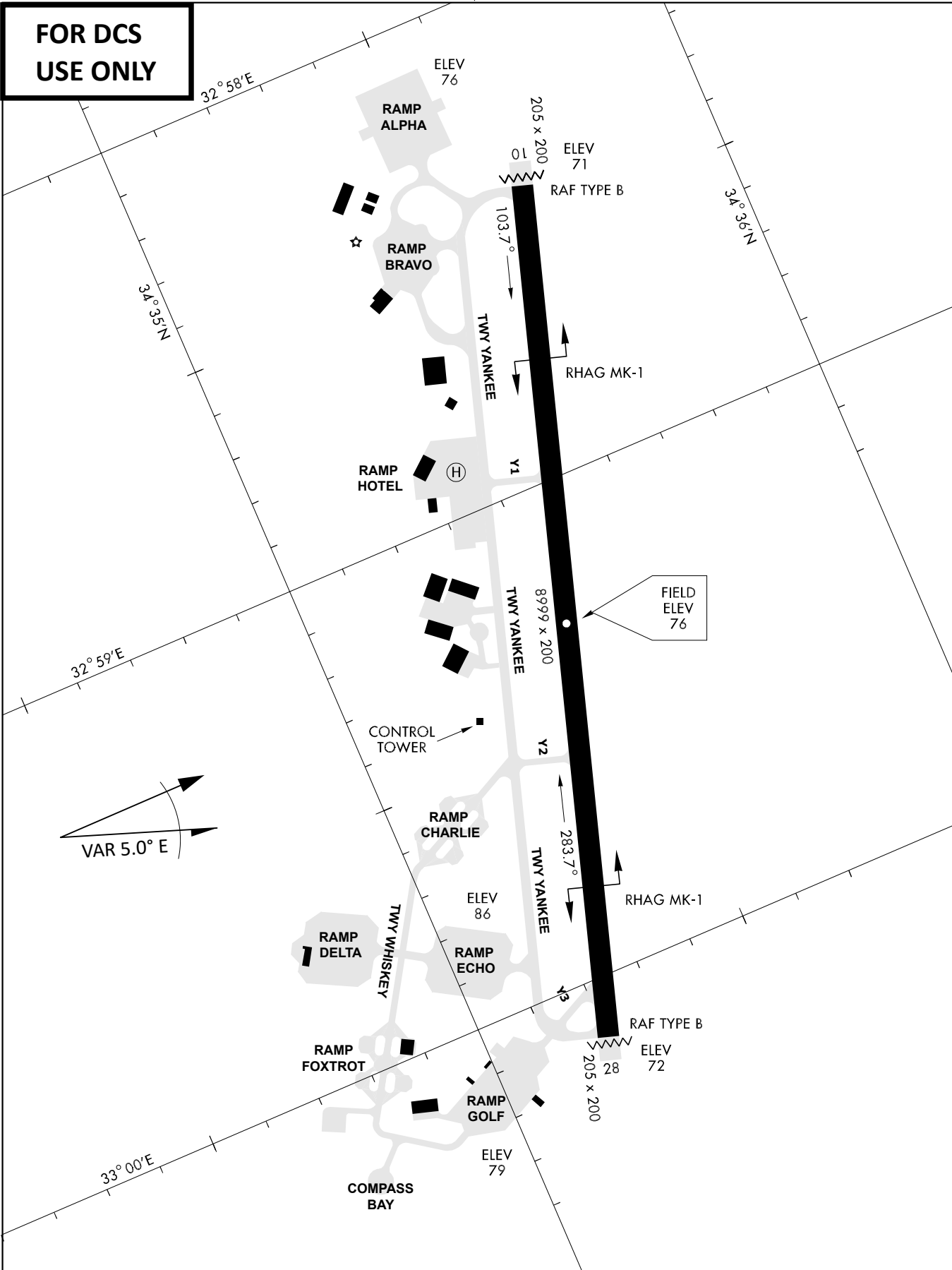
**KTC 1400 C**

	0	1	2	3	4	5	6	7	8	9
A	YILN	DUP	OGR	SA	HX	WKB	CF	QV	TM	EJ
B	QURT	MNI	POL	DJ	EF	YCB	WS	XG	AK	HV
C	EPML	OQI	FHB	JV	SD	XTC	RK	GW	NA	UY
D	CFNW	DGH	AET	QB	MI	VUO	JL	SP	RY	KX
E	FIEP	QDK	MNG	LB	WT	JYV	CS	HR	AU	XO
F	MBWL	FUE	YXD	TJ	KV	IGR	OQ	SC	HP	AN
G	KHPO	BQJ	REF	ST	IC	UVD	GL	XM	WN	AY
H	BYUF	HAC	RST	JX	IW	LNG	OP	QK	VM	ED
I	WHSF	ROL	CET	NJ	UG	VIA	YQ	MD	PB	XK
J	IVRK	JXS	TOE	LU	CP	GFD	AW	QY	NM	HB
K	JWXT	GFB	RCI	HP	AQ	VYN	OL	EK	DS	UM
L	PHMD	WJK	NAY	UQ	CF	RVX	BE	ST	IG	OL
M	HJGN	BIP	MXW	FL	CD	ESR	KU	VY	OT	QA
N	JVBH	AEI	KFS	WN	YX	OMD	LQ	GP	RU	TC
O	UIAN	JDM	CHK	WS	EY	TOL	GV	FX	RB	PQ
P	GREX	QVL	SMH	AJ	FY	PDN	UB	IK	OT	CW
Q	KFQI	VCG	HOA	BY	UN	EPJ	MX	TL	DR	SW
R	GLWX	VJK	FMH	QY	TN	IRD	UA	CS	BP	EO
S	SLJU	INO	BAP	MT	HG	VKR	CE	XY	WD	FQ
T	BMAU	YDR	OKI	NV	ST	FGL	CP	JX	WQ	HE
U	TKHB	EGL	ACF	OS	JP	NRV	MY	WD	QI	XU
V	VIKD	ETO	CUJ	RW	AQ	PXH	BF	GS	YN	LM
W	CFUD	JYB	OKA	RX	GS	LMV	TH	NW	IP	QE
X	WVRL	OGN	AXH	UY	SI	PMC	QK	BJ	EF	TD
Y	WXBA	YIC	EQL	RJ	TK	UON	FG	VS	DP	MH

**NAVAIDS**

<b>Id</b>	<b>Name</b>	<b>Channel</b>	<b>Position</b>	<b>Elevation</b>
DAN	Incirlik	21	N37 00.950 E035 26.883	243
AKR	Akrotiri	107	N34 34.765 E032 57.769	147
PHA	Paphos	79	N34 42.997 E032 28.963	35
RMD	Ramat David	84	N32 39.892 E035 11.265	136
OS66	Kuweires Military Aviation Institute	36	N36 11.362 E037 34.226	1200

**FOR DCS  
 USE ONLY**

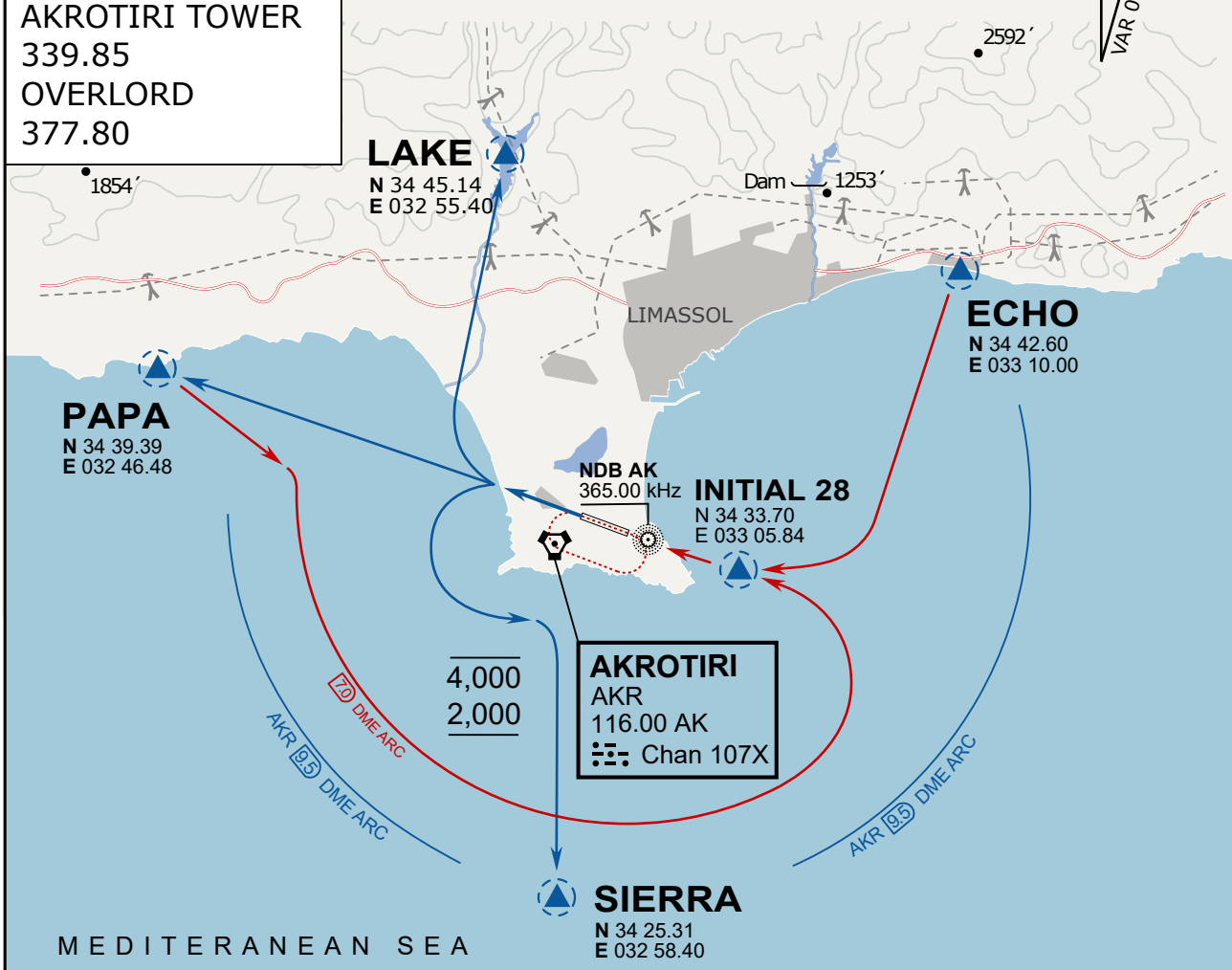


ATIS	AKROTIRI GND	AKROTIRI TWR	OVERLORD CONTROL	TACAN	FIELD ELEVATION
288.20 MHz	240.10   122.10	339.85   130.075	377.8	AKR 107X	<b>75 [ft] 23 [m]</b>

ATIS  
 288.20  
 AKROTIRI GROUND  
 240.10  
 AKROTIRI TOWER  
 339.85  
 OVERLORD  
 377.80

NOT FOR CIVIL USE

CAUTION: If unable to comply with restrictions advise ATC prior to departure.



ARR / DEP ROUTE DESCRIPTION

STRAIGHT-IN RWY28

Pass ENTRY at 5.000' MSL or below, pass INITIAL at 1.500' MSL or below.

OVERHEAD BREAK RWY28

Pass ENTRY at 5.000' MSL or below, pass INITIAL at 2.000' MSL, break to the south.

DEPARTURE GENERAL

Pass Departure end of runway at 1.000' or below.

DEP RWY28 PAPA: Fly straight ahead to exit.

DEP RWY28 LAKE: Fly straight ahead until coast, than right turn direct exit.

DEP RWY28 SIERRA: Fly straight ahead until coastline, then climbing left turn, intercept AKR R-180 to exit.

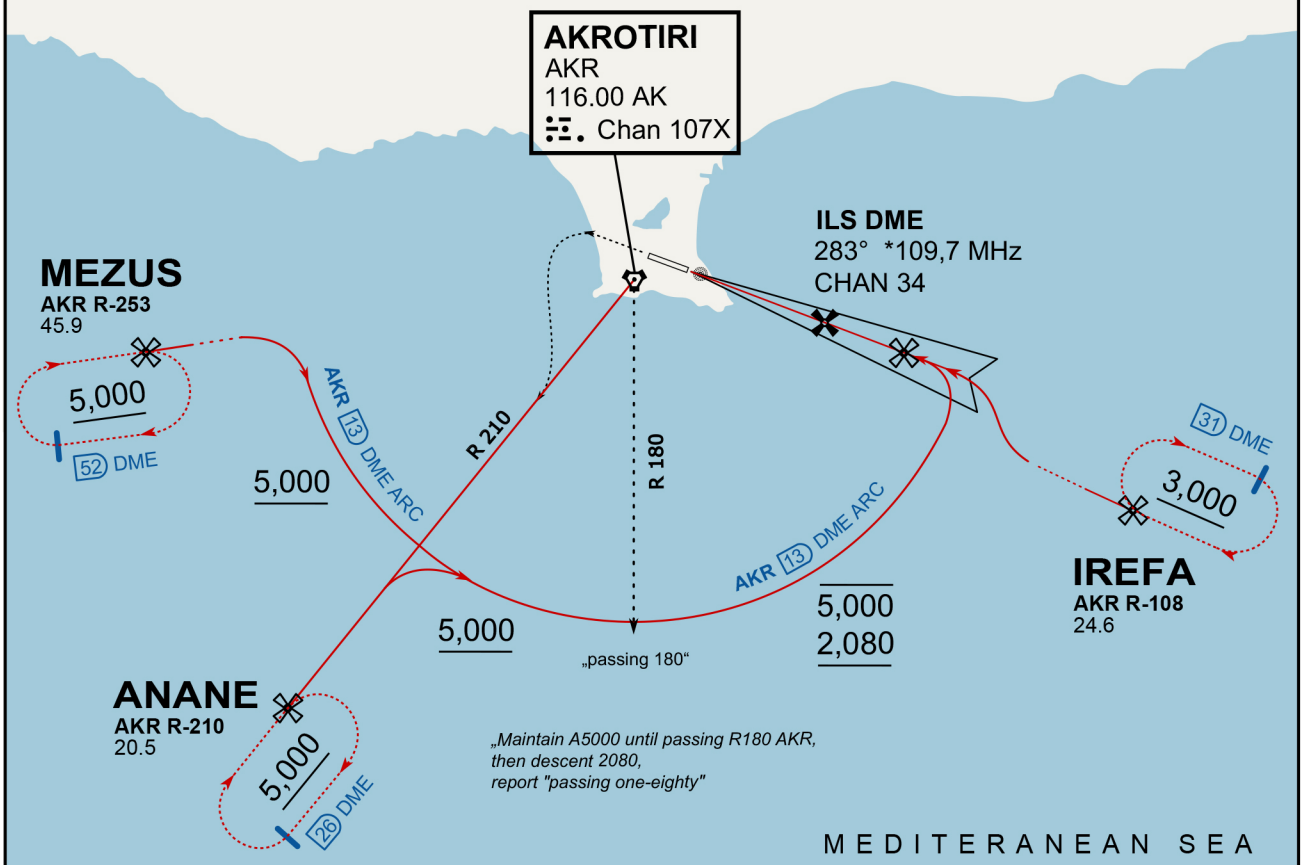
DEP ECHO: no exit.



ATIS  
288.200  
AKROTIRI GROUND  
122.100  
AKROTIRI TOWER  
339.850  
APP (OVERLORD)  
377.800

NOT FOR CIVIL USE

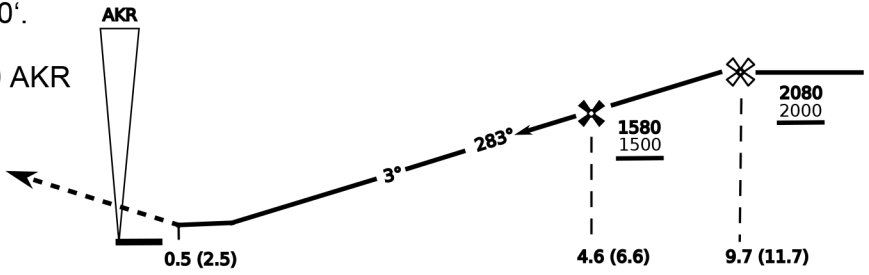
CAUTION: If unable to comply with restrictions advise ATC prior to departure.



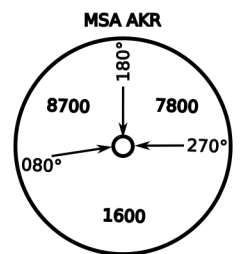
„Maintain A5000 until passing R180 AKR, then descent 2080, report "passing one-eighty"“

MEDITERANEAN SEA

On Track 283° climb A 4.000'. passing 2.080' (2.000' AAL) turn left and intercept R-210 AKR to ANANE. Enter ANANE Holding.



CAT	ILS/DME	LOC/DME	CIRCLE	GS (kts)				
				80	120	150	180	210
A	280 (200)	390 (320) 800m	680 (610) 1500m	FAF - MAPt (4.1NM)				
B	800m		680 (610) 1600m	3:06	2:03	1:38	1:22	1:10
C	290 (210) 800m		780 (710) 2400m	RoD (fpm)				
D	310 (230) 800m		780 (710) 3600m	420	640	800	950	1110
E	340 (260) 800m		1380 (1310) 3600m					



- CIRCLING PROHIBITED N of Rwy
- no AUTO coupled ILS approaches
- when established on ILS contact Tower
- Timing not Auth to define MAPt