

MISSION DATA CARD

OPORD		Callsign		Mission		Date/Time		
3071/2024		Tiger 1		Training		112000JUL24		
Task	SA10 Sead Training					Freq		
AO						134.0		
Departure				Recovery				
RWY28 VFR				RWY10 VFR				
#	Callsign		Pilot		IFF	TCN	LSR	NET
-1	Tiger 1-1		Kosmoss		1611	1Y	1621	

LOADOUT

A/A	2xA9X, A120C				GUN	100% HEI-T	
A/G					CHF	120	
POD	TGP				FLR	0	
TKS	FPU-8A				FUEL	50%	

TOLD

	Takeoff	Target	Joker	Bingo	Land		
FUEL	7645		3500	2500			

AIRBASES

	Name	TCN	ATIS	GND	TWR	RWY	Elev	ILS
Dep	Akrotiri AFB	107X	288.2	240.1	339.85	28	62	109.7
Arr	Akrotiri AFB	107X	288.2	240.1	339.85	28	62	109.7

FLIGHTPLAN

#	Name	Navaid/Coords/DME	ALT	TOT
1	ECHO	N34 42 31.443 E033 10 00.221	5000	
2	PAPA	N34 39.390 E032 46.480	5000	
3	IP	N35 11 21.238 E032 07 51.892	15000	
4	Holding F18	N35 25 26.820 E032 05 39.120	15000	
5	Holding DEAD	N34 55 47.956 E033 14 04.403	5000	

COMMS

Radio	Usage
1	4-16-4

NOTES

Holding F/A-18

N 35 25.447 E 032 05.652

Hot Leg HDG, 095

Holding F-16

N 35 37.825 E 032 06.981

Hot Leg HDG, 111

SUPPORT**Tanker**

Callsign	TCN	Freq	ALT	TAS
ARCO 1	22Y	319.8	FL222	400
	Pos	ARCO1: (N3701 E03457)		
SHELL 3	93Y	278.75	FL170	215
	Pos	SHELL3: (N3436 E03419)		

OTHER FLIGHTS

Callsign	Mission	Airframe	Freq	TCN	Grpld	Laser
Raptor 1	Training	4x F-16C	134.0	1/64		162X
AO		Task	SA10 Sead Training			

RADIO CHANNELS

#	Freq	Name
1		Flight/Squadron specific
2	288.2	Akrotiri ATIS
3	240.1	Akrotiri Ground
4	339.85	Aktrotiri Tower
5	335.05	Akrotiri Approach
6	360.1	Incirlik Tower
7	371.35	Incirlik Ground
8	377.475	Incirlik ATIS
9		No Preset
10	127.3	Paphos ATIS
11	353.8	Paphos Tower
12	304.0	CVN-73 George Washington
13	302.0	LHA-1 Tarawa
14	259.0	CV-59 Forrestal
15		No Preset
16	377.8	Overlord
17	265.0	KC-135 Texaco-1 medium/slow
18	319.8	KC-135 Arco-1
19	360.8	KC-135MPRS Arco-2
20	256.0	S-3B Recovery Tanker

RAMROD

0	1	2	3	4	5	6	7	8	9
E	X	H	A	U	S	T	I	N	G

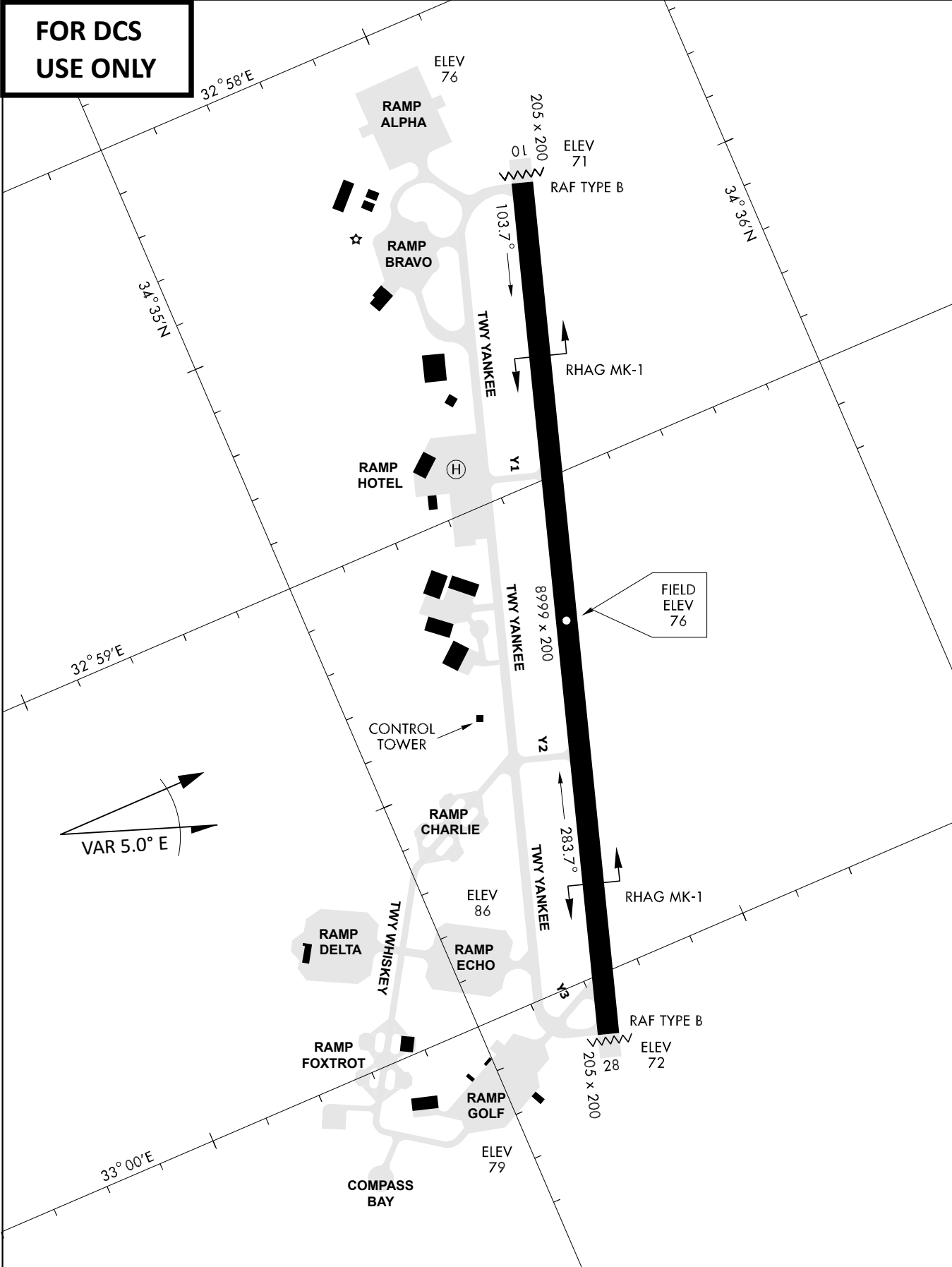
KTC 1400 C

	0	1	2	3	4	5	6	7	8	9
A	PMRV	BUI	NYF	SJ	QH	ADL	OE	XC	KG	WT
B	YAVU	KWI	MNE	CS	JB	GRH	PQ	OF	DX	TL
C	VXFC	YJT	BOS	GR	DH	QNP	EA	UL	IW	MK
D	EXQN	FWI	SGO	PL	CD	KAB	VT	JY	UM	RH
E	MDCF	JHY	TNL	XV	US	ARK	EB	GI	WQ	PO
F	UTSQ	HAP	BNX	KE	CY	WGO	MV	IF	JD	LR
G	DCAE	UGH	LOP	TR	WI	BQS	YV	JN	KX	FM
H	BNRX	WGT	UQP	JO	VF	HAY	SI	MK	EL	DC
I	LUQJ	IOT	ENR	FY	GP	HBM	SD	XW	CA	VK
J	GYCS	TDH	VNR	LW	XI	OPJ	ME	BA	FK	UQ
K	MVWT	FEB	LGO	NA	QD	SKP	IY	RH	CU	XJ
L	QNWV	EAL	OPY	FT	HD	XIC	GM	UJ	SK	BR
M	JGUT	HMV	LEF	WO	NI	BQS	YX	KD	AR	CP
N	WLGS	XEP	VHT	MK	JY	QOD	BF	CI	NU	AR
O	KMPL	CQD	FVU	IH	RJ	BTY	OE	XA	GW	NS
P	MSHI	JGF	VWL	PQ	UX	CKE	YA	OT	BN	DR
Q	ASLU	JKY	BXT	RC	NO	FIM	WP	HE	GQ	VD
R	PCFK	UOL	BTG	XW	ID	NEA	HR	QS	YV	MJ
S	IACP	MWL	UQS	NF	GR	KJE	BO	TV	XD	HY
T	KNIP	SHY	VEW	UO	FJ	DMQ	TR	CB	XG	AL
U	QINT	CMK	FPR	LH	AD	SWU	XJ	OG	YE	BV
V	MBAF	YGX	ISE	KD	LP	ORQ	WN	UT	CV	HJ
W	VMOB	FQJ	UTE	WH	CL	GRS	AD	KI	XP	NY
X	XYGL	AUC	DTB	QH	MO	EJR	FN	WS	KV	IP
Y	DPNX	MHU	SOE	WJ	VK	BYI	TQ	FG	RA	CL

NAVAIDS

Id	Name	Channel	Position	Elevation
DAN	Incirlik	21	N37 00.950 E035 26.883	243
AKR	Akrotiri	107	N34 34.765 E032 57.769	147
PHA	Paphos	79	N34 42.997 E032 28.963	35
RMD	Ramat David	84	N32 39.892 E035 11.265	136
OS66	Kuweires Military Aviation Institute	36	N36 11.362 E037 34.226	1200

**FOR DCS
 USE ONLY**

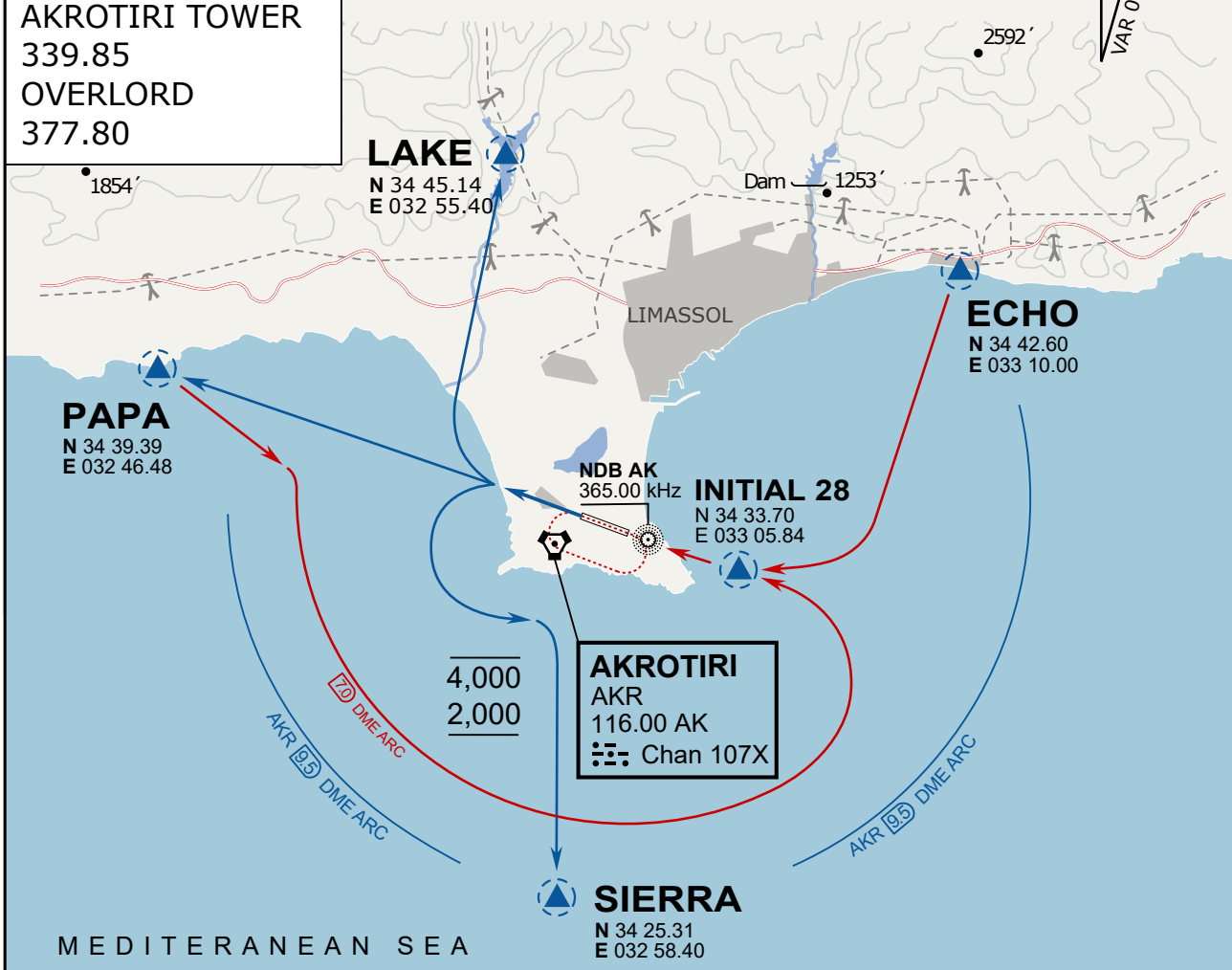


ATIS	AKROTIRI GND	AKROTIRI TWR	OVERLORD CONTROL	TACAN	FIELD ELEVATION
288.20 MHz	240.10 122.10	339.85 130.075	377.8	AKR 107X	75 [ft] 23 [m]

ATIS
 288.20
AKROTIRI GROUND
 240.10
AKROTIRI TOWER
 339.85
OVERLORD
 377.80

NOT FOR CIVIL USE

CAUTION: If unable to comply
 with restrictions advise ATC
 prior to departure.



ARR / DEP ROUTE DESCRIPTION

STRAIGHT-IN RWY28

Pass ENTRY at 5.000' MSL or below, pass INITIAL at 1.500' MSL or below.

OVERHEAD BREAK RWY28

Pass ENTRY at 5.000' MSL or below, pass INITIAL at 2.000' MSL, break to the south.

DEPARTURE GENERAL

Pass Departure end of runway at 1.000' or below.

DEP RWY28 PAPA: Fly straight ahead to exit.

DEP RWY28 LAKE: Fly straight ahead until coast, than right turn direct exit.

DEP RWY28 SIERRA: Fly straight ahead until coastline, then climbing left turn, intercept AKR R-180 to exit.

DEP ECHO: no exit.

ATIS

288.20

AKROTIRI GROUND

240.10

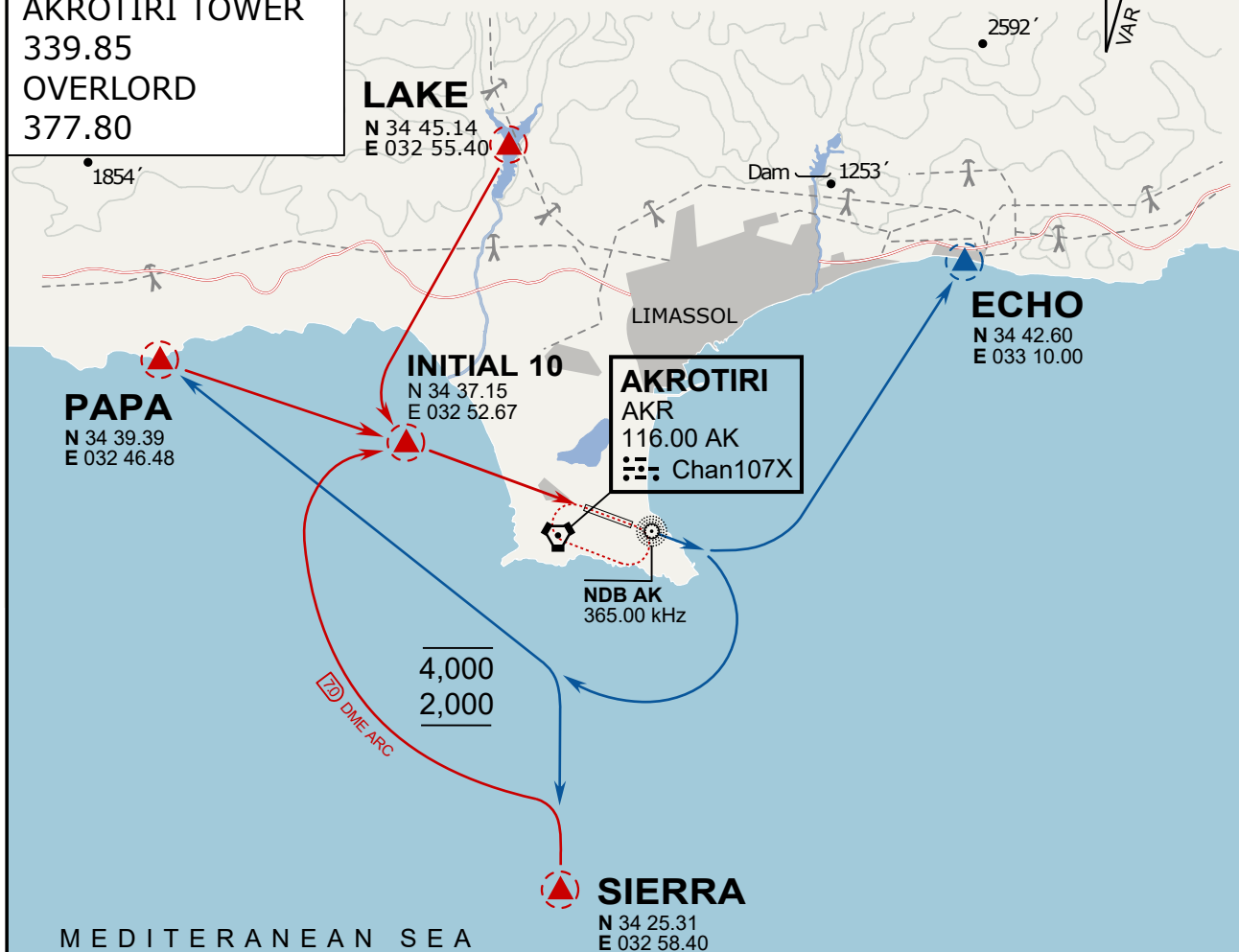
AKROTIRI TOWER

339.85

OVERLORD

377.80

NOT FOR CIVIL USE

CAUTION: If unable to comply
with restrictions advise ATC
prior to departure.

MEDITERRANEAN SEA

ARR / DEP ROUTE DESCRIPTION

ARRIVAL GENERAL

Pass Entry at 5.000' or below. Overhead Brake RWY 10: pass INITIAL 10 at 2.000' MSL.
Straight-in RWY 10 : pass INITIAL 1.500' or below.

ARR RWY10 PAPA / LAKE: Direct initial.

ARR RWY10 SIERRA: Intercept ARC 7 of AKR to INITIAL 10.

ARR ECHO: no ENTRY.

DEPARTURE GENERAL

Pass Departure end of runway at 1.000' AGL or below. Keep RWY heading until coastline.

DEP RWY10 ECHO: Direct EXIT.

DEP RWY10 SIERRA: Climbing right turn, intercept R180 AKR to Sierra.

DEP RWY10 PAPA: Climbing right turn until R180 AKR, then direct Papa

DEP LAKE: no EXIT.