

MISSION DATA CARD

| | | | | | | | | |
|-----------|--------------------|----------|----------|-----------|------|-------------|------|-----|
| OPORD | | Callsign | | Mission | | Date/Time | | |
| 3070/2024 | | Raptor 1 | | Training | | 112000JUL24 | | |
| Task | SA10 Sead Training | | | | | Freq | | |
| AO | | | | | | 134.0 | | |
| Departure | | | | Recovery | | | | |
| RWY28 VFR | | | | RWY10 VFR | | | | |
| # | Callsign | | Pilot | | IFF | TCN | LSR | NET |
| -1 | Raptor 1-1 | | Jinx | | 1611 | 1Y | 1621 | |
| -2 | Raptor 1-2 | | Snowbird | | 1612 | 64Y | 1622 | |
| -3 | Raptor 1-3 | | Void | | 1613 | 64X | 1623 | |

LOADOUT

| | | | | | | | |
|-----|----------------|--|--|--|------|------------|--|
| A/A | 2xA120C, 2xA9X | | | | GUN | 100% HEI-T | |
| A/G | 2xA88C | | | | CHF | 60 | |
| POD | HTS, TGP | | | | FLR | 60 | |
| TKS | 2xFT300 | | | | FUEL | 100% | |

TOLD

| | | | | | |
|------|---------|--------|-------|-------|------|
| | Takeoff | Target | Joker | Bingo | Land |
| FUEL | 11169 | | 3500 | 2500 | |

AIRBASES

| | | | | | | | | |
|-----|--------------|------|-------|-------|--------|-----|------|-------|
| | Name | TCN | ATIS | GND | TWR | RWY | Elev | ILS |
| Dep | Akrotiri AFB | 107X | 288.2 | 240.1 | 339.85 | 28 | 62 | 109.7 |
| Arr | Akrotiri AFB | 107X | 288.2 | 240.1 | 339.85 | 28 | 62 | 109.7 |

FLIGHTPLAN

| # | Name | Navaid/Coords/DME | ALT | TOT |
|---|--------------|------------------------------|-------|-----|
| 1 | ECHO | N34 42 31.443 E033 10 00.221 | 5000 | |
| 2 | PAPA | N34 39.390 E032 46.480 | 5000 | |
| 3 | IP | N35 11 21.238 E032 07 51.892 | 15000 | |
| 4 | Holding F16 | N35 35 29.405 E032 09 51.203 | 15000 | |
| 5 | Holding DEAD | N34 55 47.956 E033 14 04.403 | 5000 | |

COMMS

| Radio | Usage |
|-------|--------|
| 1 | 4-16-4 |

NOTES

Holding F/A-18

N 35 25.447 E 032 05.652

Hot Leg HDG, 095

Holding F-16

N 35 37.825 E 032 06.981

Hot Leg HDG, 111

SUPPORT**Tanker**

| Callsign | TCN | Freq | ALT | TAS |
|----------|-----|------------------------|-------|-----|
| ARCO 1 | 22Y | 319.8 | FL222 | 400 |
| | Pos | ARCO1: (N3701 E03457) | | |
| SHELL 3 | 93Y | 278.75 | FL170 | 215 |
| | Pos | SHELL3: (N3436 E03419) | | |

OTHER FLIGHTS

| Callsign | Mission | Airframe | Freq | TCN | Grpld | Laser |
|----------|----------|------------|--------------------|------|-------|-------|
| Tiger 1 | Training | 2x F/A-18C | 134.0 | 1/64 | | 162X |
| AO | | Task | SA10 Sead Training | | | |

RADIO CHANNELS

| # | Freq | Name |
|----|---------|-----------------------------|
| 1 | | Flight/Squadron specific |
| 2 | 288.2 | Akrotiri ATIS |
| 3 | 240.1 | Akrotiri Ground |
| 4 | 339.85 | Aktrotiri Tower |
| 5 | 335.05 | Akrotiri Approach |
| 6 | 360.1 | Incirlik Tower |
| 7 | 371.35 | Incirlik Ground |
| 8 | 377.475 | Incirlik ATIS |
| 9 | | No Preset |
| 10 | 127.3 | Paphos ATIS |
| 11 | 353.8 | Paphos Tower |
| 12 | 304.0 | CVN-73 George Washington |
| 13 | 302.0 | LHA-1 Tarawa |
| 14 | 259.0 | CV-59 Forrestal |
| 15 | | No Preset |
| 16 | 377.8 | Overlord |
| 17 | 265.0 | KC-135 Texaco-1 medium/slow |
| 18 | 319.8 | KC-135 Arco-1 |
| 19 | 360.8 | KC-135MPRS Arco-2 |
| 20 | 256.0 | S-3B Recovery Tanker |

RAMROD

| | | | | | | | | | |
|---|---|---|---|---|---|---|---|---|---|
| 0 | 1 | 2 | 3 | 4 | 5 | 6 | 7 | 8 | 9 |
| E | X | H | A | U | S | T | I | N | G |

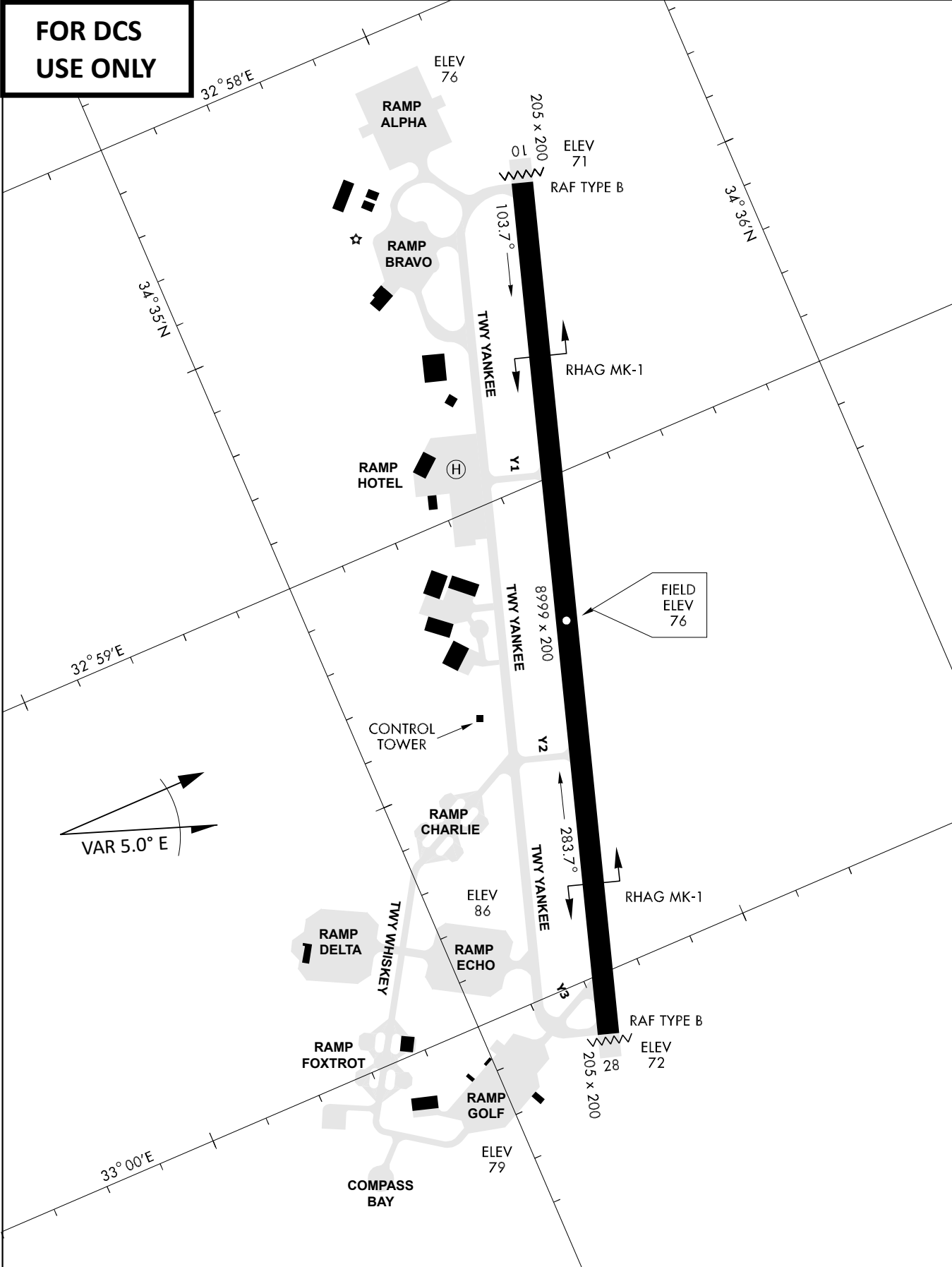
KTC 1400 C

| | 0 | 1 | 2 | 3 | 4 | 5 | 6 | 7 | 8 | 9 |
|---|------|-----|-----|----|----|-----|----|----|----|----|
| A | PMRV | BUI | NYF | SJ | QH | ADL | OE | XC | KG | WT |
| B | YAVU | KWI | MNE | CS | JB | GRH | PQ | OF | DX | TL |
| C | VXFC | YJT | BOS | GR | DH | QNP | EA | UL | IW | MK |
| D | EXQN | FWI | SGO | PL | CD | KAB | VT | JY | UM | RH |
| E | MDCF | JHY | TNL | XV | US | ARK | EB | GI | WQ | PO |
| F | UTSQ | HAP | BNX | KE | CY | WGO | MV | IF | JD | LR |
| G | DCAE | UGH | LOP | TR | WI | BQS | YV | JN | KX | FM |
| H | BNRX | WGT | UQP | JO | VF | HAY | SI | MK | EL | DC |
| I | LUQJ | IOT | ENR | FY | GP | HBM | SD | XW | CA | VK |
| J | GYCS | TDH | VNR | LW | XI | OPJ | ME | BA | FK | UQ |
| K | MVWT | FEB | LGO | NA | QD | SKP | IY | RH | CU | XJ |
| L | QNWV | EAL | OPY | FT | HD | XIC | GM | UJ | SK | BR |
| M | JGUT | HMV | LEF | WO | NI | BQS | YX | KD | AR | CP |
| N | WLGS | XEP | VHT | MK | JY | QOD | BF | CI | NU | AR |
| O | KMPL | CQD | FVU | IH | RJ | BTY | OE | XA | GW | NS |
| P | MSHI | JGF | VWL | PQ | UX | CKE | YA | OT | BN | DR |
| Q | ASLU | JKY | BXT | RC | NO | FIM | WP | HE | GQ | VD |
| R | PCFK | UOL | BTG | XW | ID | NEA | HR | QS | YV | MJ |
| S | IACP | MWL | UQS | NF | GR | KJE | BO | TV | XD | HY |
| T | KNIP | SHY | VEW | UO | FJ | DMQ | TR | CB | XG | AL |
| U | QINT | CMK | FPR | LH | AD | SWU | XJ | OG | YE | BV |
| V | MBAF | YGX | ISE | KD | LP | ORQ | WN | UT | CV | HJ |
| W | VMOB | FQJ | UTE | WH | CL | GRS | AD | KI | XP | NY |
| X | XYGL | AUC | DTB | QH | MO | EJR | FN | WS | KV | IP |
| Y | DPNX | MHU | SOE | WJ | VK | BYI | TQ | FG | RA | CL |

NAVAIDS

| Id | Name | Channel | Position | Elevation |
|-----------|---|----------------|------------------------|------------------|
| DAN | Incirlik | 21 | N37 00.950 E035 26.883 | 243 |
| AKR | Akrotiri | 107 | N34 34.765 E032 57.769 | 147 |
| PHA | Paphos | 79 | N34 42.997 E032 28.963 | 35 |
| RMD | Ramat David | 84 | N32 39.892 E035 11.265 | 136 |
| OS66 | Kuweires Military Aviation Institute | 36 | N36 11.362 E037 34.226 | 1200 |

**FOR DCS
 USE ONLY**

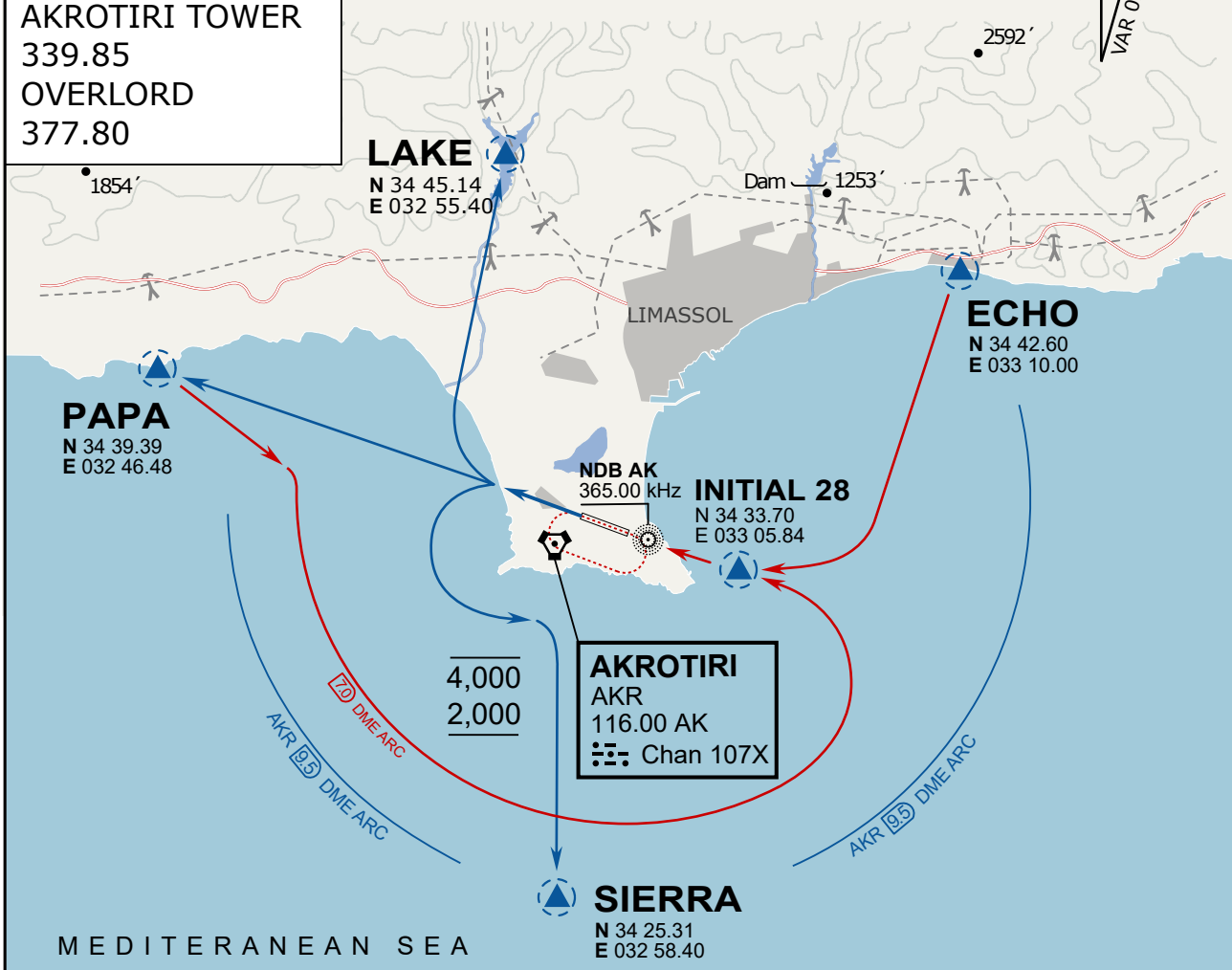


| ATIS | AKROTIRI GND | AKROTIRI TWR | OVERLORD CONTROL | TACAN | FIELD ELEVATION |
|------------|-----------------|------------------|------------------|----------|-----------------------|
| 288.20 MHz | 240.10 122.10 | 339.85 130.075 | 377.8 | AKR 107X | 75 [ft] 23 [m] |

ATIS
 288.20
AKROTIRI GROUND
 240.10
AKROTIRI TOWER
 339.85
OVERLORD
 377.80

NOT FOR CIVIL USE

CAUTION: If unable to comply
 with restrictions advise ATC
 prior to departure.



ARR / DEP ROUTE DESCRIPTION

STRAIGHT-IN RWY28

Pass ENTRY at 5.000' MSL or below, pass INITIAL at 1.500' MSL or below.

OVERHEAD BREAK RWY28

Pass ENTRY at 5.000' MSL or below, pass INITIAL at 2.000' MSL, break to the south.

DEPARTURE GENERAL

Pass Departure end of runway at 1.000' or below.

DEP RWY28 PAPA: Fly straight ahead to exit.

DEP RWY28 LAKE: Fly straight ahead until coast, than right turn direct exit.

DEP RWY28 SIERRA: Fly straight ahead until coastline, then climbing left turn, intercept AKR R-180 to exit.

DEP ECHO: no exit.

ATIS

288.20

AKROTIRI GROUND

240.10

AKROTIRI TOWER

339.85

OVERLORD

377.80

NOT FOR CIVIL USE

CAUTION: If unable to comply
with restrictions advise ATC
prior to departure.

ARR / DEP ROUTE DESCRIPTION

ARRIVAL GENERAL

Pass Entry at 5.000' or below. Overhead Brake RWY 10: pass INITIAL 10 at 2.000' MSL.
Straight-in RWY 10 : pass INITIAL 1.500' or below.

ARR RWY10 PAPA / LAKE: Direct initial.

ARR RWY10 SIERRA: Intercept ARC 7 of AKR to INITIAL 10.

ARR ECHO: no ENTRY.

DEPARTURE GENERAL

Pass Departure end of runway at 1.000' AGL or below. Keep RWY heading until coastline.

DEP RWY10 ECHO: Direct EXIT.

DEP RWY10 SIERRA: Climbing right turn, intercept R180 AKR to Sierra.

DEP RWY10 PAPA: Climbing right turn until R180 AKR, then direct Papa

DEP LAKE: no EXIT.