

**MISSION DATA CARD**

OPORD		Callsign		Mission		Date/Time		
3068/2024		Tiger 2		Training		090000JUL24		
Task						Freq		
AO						134.0		
Departure				Recovery				
RWY28 VFR				RWY10 VFR				
#	Callsign		Pilot		IFF	TCN	LSR	NET
-1	Tiger 2-1		Kosmoss		1611	1Y	1621	

**LOADOUT**

A/A	2xA9X, A120C				GUN	100% HEI-T	
A/G	2xA88C				CHF	120	
POD	TGP				FLR	0	
TKS	FPU-8A				FUEL	100%	

**TOLD**

	Takeoff	Target	Joker	Bingo	Land
FUEL	13047			4000	

**AIRBASES**

	Name	TCN	ATIS	GND	TWR	RWY	Elev	ILS
Dep	Akrotiri AFB	107X	288.2	240.1	339.85	28	62	109.7
Arr	Akrotiri AFB	107X	288.2	240.1	339.85	28	62	109.7

**FLIGHTPLAN**

#	Name	Navaid/Coords/DME	ALT	TOT
1	PAPA	N34 39 43.973 E032 49 10.352	5000	
2	ECHO	N34 42 31.443 E033 10 00.221	5000	
3	LOSOS	N34 42 35.345 E033 22 11.397	10000	
4	GBR.T1	N35 14 09.292 E033 43 19.040	25000	
5	TGT	N35 25 49.927 E034 05 27.636	25000	
6	RAF Akrotiri	N34 35 26 E032 59 17	0	

**SUPPORT****Tanker**

Callsign	TCN	Freq	ALT	TAS
ARCO 1	22Y	319.8	FL222	400
Pos	ARCO1: (N3701 E03457)			

**OTHER FLIGHTS**

Callsign	Mission	Airframe	Freq	TCN	Grpld	Laser
Beast 7	Training	1x OH-58D(R)	264.05	1/64		170X
AO		Task				
Nazgul 6	Training	4x F-15E	262.45	1/64		156X
AO		Task				
Edelweiss 4	Training	1x F/A-18C	264.45	1/64		174X
AO		Task				
Raptor 2	Training	2x F-16C	134.0	1/64		162X
AO		Task				

**RADIO CHANNELS**

#	Freq	Name
1		Flight/Squadron specific
2	288.2	Akrotiri ATIS
3	240.1	Akrotiri Ground
4	339.85	Aktrotiri Tower
5	335.05	Akrotiri Approach
6	360.1	Incirlik Tower
7	371.35	Incirlik Ground
8	377.475	Incirlik ATIS
9		No Preset
10	127.3	Paphos ATIS
11	353.8	Paphos Tower
12	304.0	CVN-73 George Washington
13	302.0	LHA-1 Tarawa
14	259.0	CV-59 Forrestal
15		No Preset
16	377.8	Overlord
17	265.0	KC-135 Texaco-1 medium/slow
18	319.8	KC-135 Arco-1
19	360.8	KC-135MPRS Arco-2
20	256.0	S-3B Recovery Tanker

**RAMROD**

0	1	2	3	4	5	6	7	8	9
A	D	M	I	X	T	U	R	E	S

**KTC 1400 C**

	0	1	2	3	4	5	6	7	8	9
A	JSWM	DNP	LBR	IG	YA	HEU	TX	OK	QV	FC
B	UTJH	AQI	NDL	RK	OS	EXF	GY	VC	WB	PM
C	RJYN	DQK	BXA	OE	HF	UPW	TL	VG	CS	MI
D	HOCF	TAJ	WVQ	XY	DG	MEL	KR	PU	NS	IB
E	LGUT	PEM	KHO	FS	JD	CVI	WN	AB	QY	XR
F	QXOU	IKJ	HPC	TE	GF	LBW	SM	VR	AD	NY
G	XSAC	IVN	MOK	TF	YB	GDR	LP	QJ	WU	EH
H	NKYD	VGX	HMO	CU	AE	SFJ	QL	WT	RP	BI
I	KUTS	RIQ	FAN	VD	LJ	GCY	XB	HM	PO	EW
J	MOXN	KBI	EHR	JY	CV	PTL	UG	WD	SA	QF
K	RSFM	XVH	WOP	UT	EC	YDG	JI	AQ	KL	NB
L	GAVE	ISW	LJK	XH	UP	YDT	NC	BR	FM	QO
M	FHCO	TYI	QLD	EJ	WU	SNV	AB	GR	MX	KP
N	DTCR	OLN	GSJ	IB	XQ	KHW	PE	AY	FM	UV
O	HSIY	NJC	RVA	TK	GF	EQL	BP	MX	UD	WO
P	FUVL	QEK	SAB	HT	MG	NIY	CX	RO	DJ	PW
Q	QPSD	IGJ	YFX	TA	RB	OHE	NL	MK	VW	CU
R	SMCX	LBD	YPG	EV	IR	AWH	NK	TF	JU	OQ
S	XEDS	HJM	WRV	GI	QL	CNT	AU	BY	PO	FK
T	SXNI	CGY	MQT	KJ	FV	AEO	HD	PU	WL	RB
U	KQIF	JNT	PCY	RL	GV	BME	UO	SH	DX	WA
V	DKLR	PSW	GYU	EN	TM	JQX	CA	FO	BH	IV
W	XYAR	GSK	JMW	LH	QD	IET	VC	FU	PB	NO
X	OMIT	SXE	NUD	QY	AL	HPB	VW	FC	RJ	GK
Y	OVRJ	CHI	GLP	TF	YN	AWU	EB	DQ	SK	MX

**NAVAIDS**

<b>Id</b>	<b>Name</b>	<b>Channel</b>	<b>Position</b>	<b>Elevation</b>
DAN	Incirlik	21	N37 00.950 E035 26.883	243
AKR	Akrotiri	107	N34 34.765 E032 57.769	147
PHA	Paphos	79	N34 42.997 E032 28.963	35
RMD	Ramat David	84	N32 39.892 E035 11.265	136
OS66	Kuweires Military Aviation Institute	36	N36 11.362 E037 34.226	1200

**FOR DCS  
 USE ONLY**



ATIS	AKROTIRI GND	AKROTIRI TWR	OVERLORD CONTROL	TACAN	FIELD ELEVATION
288.20 MHz	240.10   122.10	339.85   130.075	377.8	AKR 107X	<b>75 [ft] 23 [m]</b>



**ATIS**  
 288.20  
**AKROTIRI GROUND**  
 240.10  
**AKROTIRI TOWER**  
 339.85  
**OVERLORD**  
 377.80

### NOT FOR CIVIL USE

CAUTION: If unable to comply  
 with restrictions advise ATC  
 prior to departure.



### ARR / DEP ROUTE DESCRIPTION

#### STRAIGHT-IN RWY28

Pass ENTRY at 5.000' MSL or below, pass INITIAL at 1.500' MSL or below.

#### OVERHEAD BREAK RWY28

Pass ENTRY at 5.000' MSL or below, pass INITIAL at 2.000' MSL, break to the south.

#### DEPARTURE GENERAL

Pass Departure end of runway at 1.000' or below.

DEP RWY28 PAPA: Fly straight ahead to exit.

DEP RWY28 LAKE: Fly straight ahead until coast, than right turn direct exit.

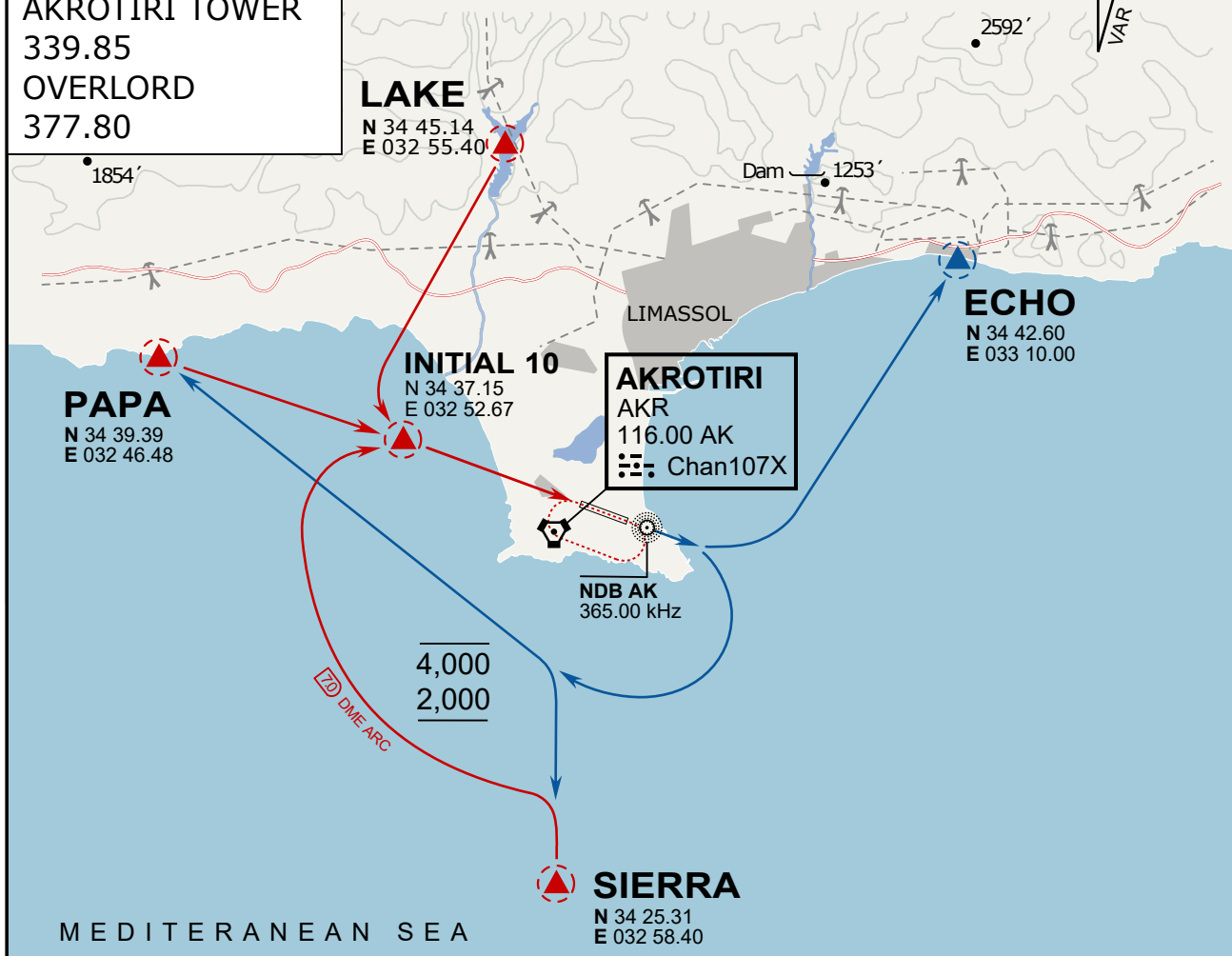
DEP RWY28 SIERRA: Fly straight ahead until coastline, then climbing left turn, intercept AKR R-180 to exit.

DEP ECHO: no exit.

ATIS  
288.20  
AKROTIRI GROUND  
240.10  
AKROTIRI TOWER  
339.85  
OVERLORD  
377.80

NOT FOR CIVIL USE

CAUTION: If unable to comply with restrictions advise ATC prior to departure.



MEDITERRANEAN SEA

**ARR / DEP ROUTE DESCRIPTION**

**ARRIVAL GENERAL**

Pass Entry at 5.000' or below. Overhead Brake RWY 10: pass INITIAL 10 at 2.000' MSL. Straight-in RWY 10 : pass INITIAL 1.500' or below.

ARR RWY10 PAPA / LAKE: Direct initial.

ARR RWY10 SIERRA: Intercept ARC 7 of AKR to INITIAL 10.

ARR ECHO: no ENTRY.

**DEPARTURE GENERAL**

Pass Departure end of runway at 1.000' AGL or below. Keep RWY heading until coastline.

DEP RWY10 ECHO: Direct EXIT.

DEP RWY10 SIERRA: Climbing right turn, intercept R180 AKR to Sierra.

DEP RWY10 PAPA: Climbing right turn until R180 AKR, then direct Papa

DEP LAKE: no EXIT.