

**MISSION DATA CARD**

OPORD		Callsign		Mission		Date/Time		
3064/2024		Beast 7		Training		082000JUL24		
Task						Freq		
AO						264.05		
Departure				Recovery				
Helicopter VFR				Helicopter VFR				
#	Callsign		Pilot		IFF	TCN	LSR	NET

**LOADOUT**

A/A					GUN	
A/G					CHF	
POD					FLR	
TKS					FUEL	

**TOLD**

	Takeoff	Target	Joker	Bingo	Land
FUEL	736				

**AIRBASES**

	Name	TCN	ATIS	GND	TWR	RWY	Elev	ILS
Dep	Akrotiri AFB	107X	288.2	240.1	339.85	28	62	109.7
Arr	Akrotiri AFB	107X	288.2	240.1	339.85	28	62	109.7

**OTHER FLIGHTS**

Callsign	Mission	Airframe	Freq	TCN	Grpld	Laser
Nazgul 6	Training	4x F-15E	262.45	1/64		156X
AO		Task				
Edelweiss 4	Training	1x F/A-18C	264.45	1/64		174X
AO		Task				
Tiger 2	Training	2x F/A-18C	134.0	1/64		162X
AO		Task				
Raptor 2	Training	2x F-16C	134.0	1/64		162X
AO		Task				

**RADIO CHANNELS**

#	Freq	Name
1		Flight/Squadron specific
2	288.2	Akrotiri ATIS
3	240.1	Akrotiri Ground
4	339.85	Aktrotiri Tower
5	335.05	Akrotiri Approach
6	360.1	Incirlik Tower
7	371.35	Incirlik Ground
8	377.475	Incirlik ATIS
9		No Preset
10	127.3	Paphos ATIS
11	353.8	Paphos Tower
12	304.0	CVN-73 George Washington
13	302.0	LHA-1 Tarawa
14	259.0	CV-59 Forrestal
15		No Preset
16	377.8	Overlord
17	265.0	KC-135 Texaco-1 medium/slow
18	319.8	KC-135 Arco-1
19	360.8	KC-135MPRS Arco-2
20	256.0	S-3B Recovery Tanker

**RAMROD**

0	1	2	3	4	5	6	7	8	9
U	N	D	E	R	P	L	A	Y	S

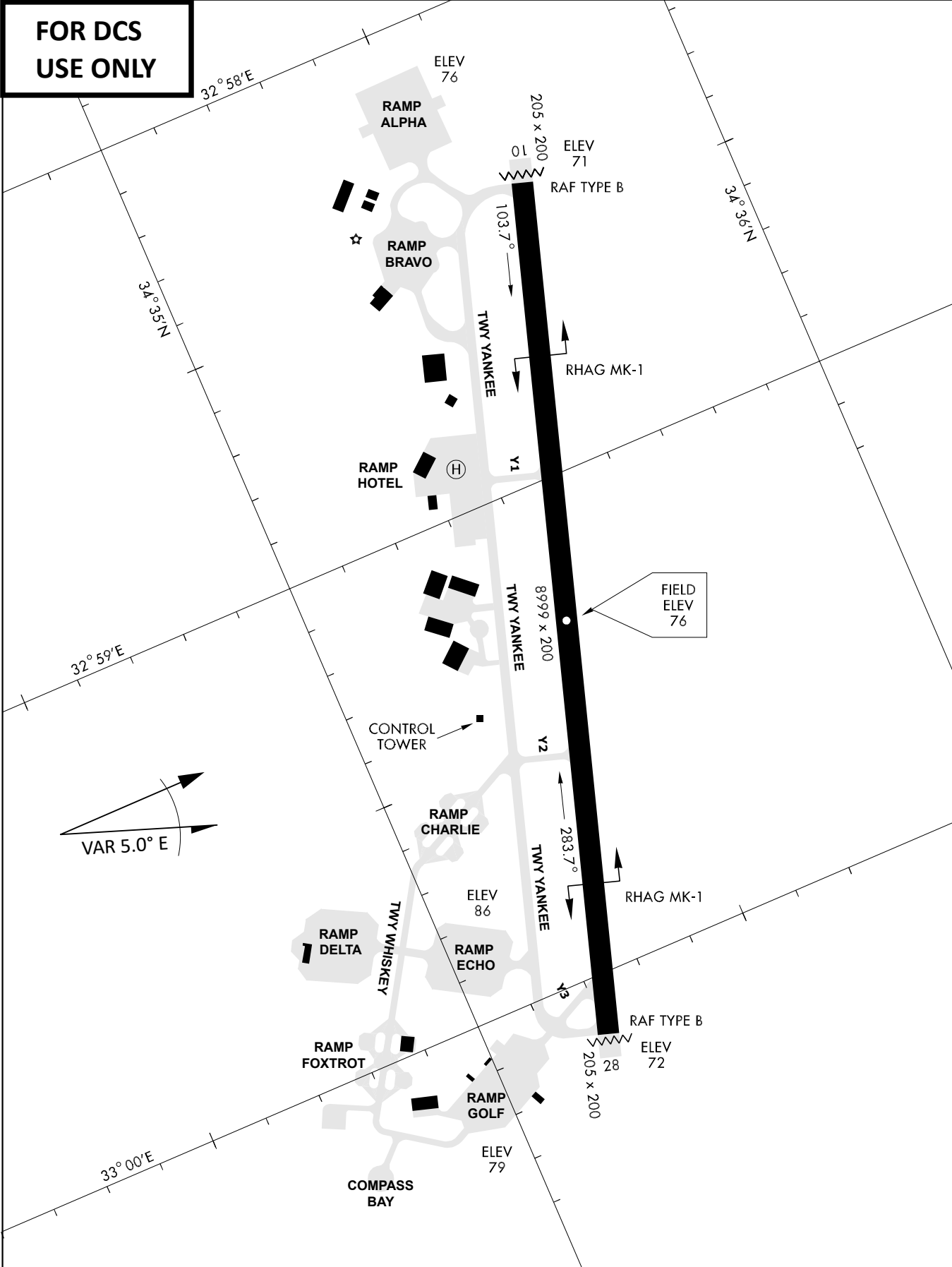
**KTC 1400 C**

	0	1	2	3	4	5	6	7	8	9
A	ERC D	KOU	SFI	MY	HN	VTP	AQ	JX	GW	BL
B	WPVA	LNS	CRM	FB	XO	TDH	QE	JU	GI	YK
C	MWLE	CIY	TBF	VQ	KN	JSG	OD	XP	RU	AH
D	CHDM	TFA	YWI	KX	SQ	GLE	BO	VR	PN	JU
E	LFNT	AYS	HJO	MU	VG	QDX	EK	CB	WP	RI
F	MVWB	TEU	DGI	AO	RK	PSF	QH	XL	YC	NJ
G	OAFN	DHX	EUR	LW	GC	JTP	IB	QS	VK	MY
H	OUAP	IYE	RVW	MQ	XS	LKF	GD	HT	BC	NJ
I	RIUY	SLH	BOE	TM	CX	VKQ	GJ	FW	DA	PN
J	RUOH	SGD	EPA	LV	TW	JQK	NI	XF	YM	CB
K	DQRG	TUI	WJE	PO	FN	AXB	CM	KL	SY	HV
L	GEDI	FNY	HAI	UL	BM	OXK	SW	VR	QC	TP
M	VJWD	ICP	NKE	BY	MO	QGR	AU	FS	LT	XH
N	XATL	NPB	YEJ	SU	WD	CQI	MK	OG	RV	HF
O	EDBI	UYJ	SHL	FA	WN	RGO	CP	XT	QK	VM
P	PCWO	XBV	ENJ	QK	GI	SYR	FA	DL	TU	HM
Q	RCBU	VHO	KAP	TW	MJ	EYQ	SX	FD	NI	LG
R	HLDY	IMC	XAO	SK	JV	NUP	GW	BR	ET	FQ
S	TEXW	NKL	MJC	UQ	SI	DVF	RY	PA	OB	GH
T	HGVJ	TES	LDI	BY	RF	UAM	QN	XC	KO	PW
U	VOWS	YIM	HQT	XP	BR	UEJ	KL	CN	FG	AD
V	LQBC	YUN	EOH	PS	GF	KWR	VI	DX	AJ	MT
W	GPSW	QBE	NAT	OK	LX	FRU	HM	JC	YV	DI
X	UHXC	VAS	ELT	QM	NY	RKD	OB	PW	GI	JF
Y	FGMP	TYD	LSB	UH	NW	IAX	JR	CQ	KV	EO

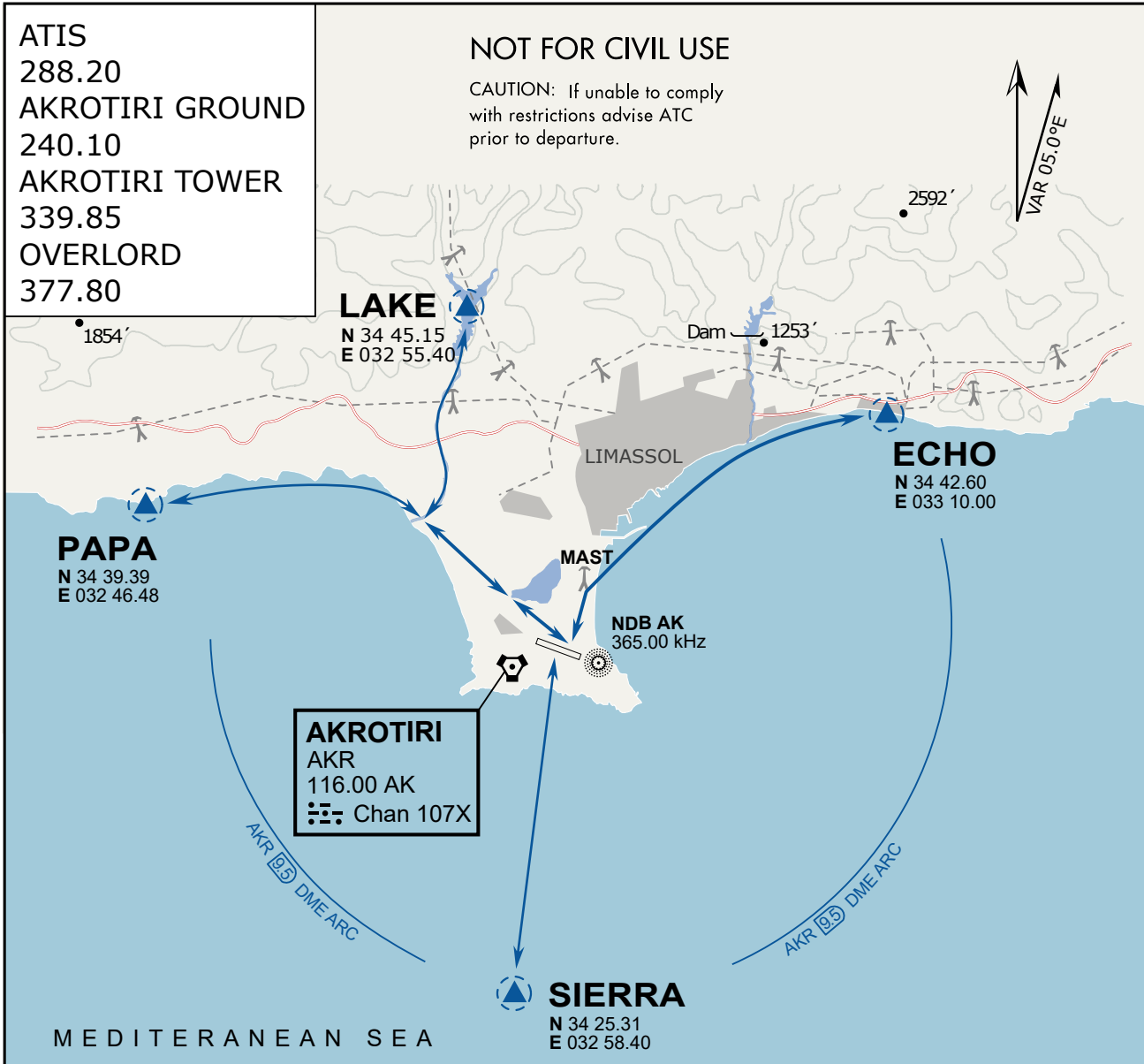
**NAVAIDS**

<b>Id</b>	<b>Name</b>	<b>Channel</b>	<b>Position</b>	<b>Elevation</b>
DAN	Incirlik	21	N37 00.950 E035 26.883	243
AKR	Akrotiri	107	N34 34.765 E032 57.769	147
PHA	Paphos	79	N34 42.997 E032 28.963	35
RMD	Ramat David	84	N32 39.892 E035 11.265	136
OS66	Kuweires Military Aviation Institute	36	N36 11.362 E037 34.226	1200

**FOR DCS  
 USE ONLY**



ATIS	AKROTIRI GND	AKROTIRI TWR	OVERLORD CONTROL	TACAN	FIELD ELEVATION
288.20 MHz	240.10   122.10	339.85   130.075	377.8	AKR 107X	<b>75 [ft] 23 [m]</b>



### ARR / DEP ROUTE DESCRIPTION

#### GENERAL

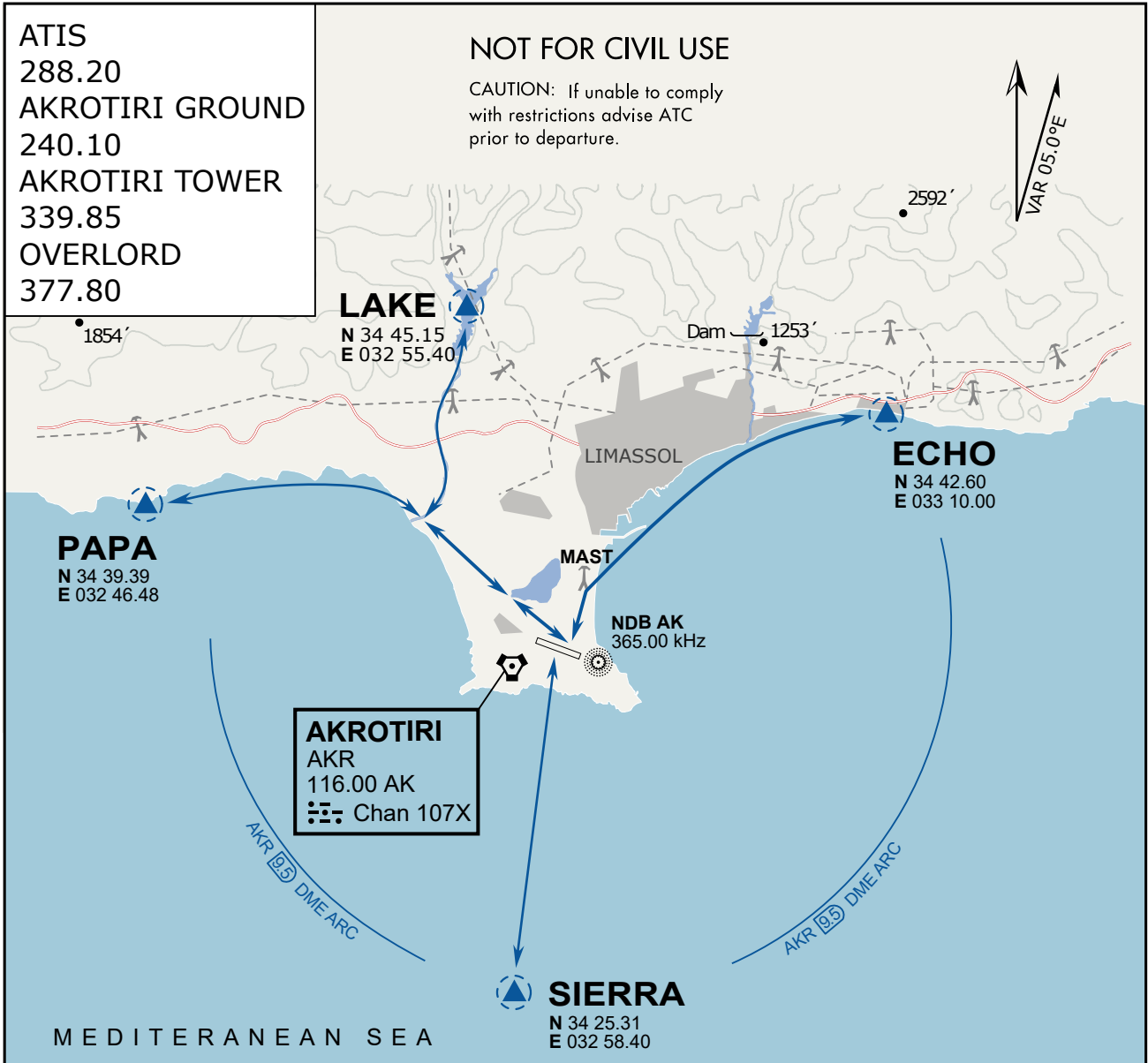
Stay at or below 500' AGL.

#### DEPARTURE

- ECHO: Via the 4 masts, along the coastline to EXIT.
- LAKE: Stay SOUTH WEST of the dry lake, to the river mouth, follow river to EXIT.
- PAPA: Stay SOUTH WEST of the dry lake, follow coastline to EXIT.
- SIERRA: Direct EXIT.

#### ARRIVAL

- LAKE: Follow river to coastline, then direct LCRA.
- PAPA: Follow coastline to rivermouth, then direct LCRA.
- ECHO: Follow coastline to the 4 masts, then to LCRA.
- SIERRA: Direct to LCRA.



### ARR / DEP ROUTE DESCRIPTION

#### GENERAL

Stay at or below 500' AGL.

#### DEPARTURE

- ECHO: Via the 4 masts, along the coastline to EXIT.
- LAKE: Stay SOUTH WEST of the dry lake, to the river mouth, follow river to EXIT.
- PAPA: Stay SOUTH WEST of the dry lake, follow coastline to EXIT.
- SIERRA: Direct EXIT.

#### ARRIVAL

- LAKE: Follow river to coastline, then direct LCRA.
- PAPA: Follow coastline to rivermouth, then direct LCRA.
- ECHO: Follow coastline to the 4 masts, then to LCRA.
- SIERRA: Direct to LCRA.