

MISSION DATA CARD

OPORD		Callsign		Mission		Date/Time		
3061/2024		Vanguard 1		Training		071100JUL24		
Task						Freq		
AO						264.05		
Departure				Recovery				
RWY10 SID				TAC 28				
#	Callsign		Pilot		IFF	TCN	LSR	NET
-1	Vanguard 1-1		Herby		3311	1Y	1701	

LOADOUT

A/A						GUN	
A/G						CHF	
POD						FLR	
TKS						FUEL	

TOLD

	Takeoff	Target	Joker	Bingo	Land
FUEL	2513				

AIRBASES

	Name	TCN	ATIS	GND	TWR	RWY	Elev	ILS
Dep	Akrotiri AFB	107X	288.2	240.1	339.85	28	62	109.7
Arr	Akrotiri AFB	107X	288.2	240.1	339.85	28	62	109.7

FLIGHTPLAN

#	Name	Navaid/Coords/DME	ALT	TOT
1	BURG KOLOSSI	N34 39 53.547 E032 56 02.356	1000	
2	LAKE	N34 44 45.613 E032 55 25.013	1000	
3	ITR.T1	N34 47 19.080 E032 58 37.346	1000	
4	4	N34 47 14.323 E033 01 44.320	1000	
5	5	N34 49 19.775 E032 58 44.798	1000	
6	6	N34 47 05.958 E032 56 20.925	1000	
7	7	N34 45 13.003 E032 59 00.076	1000	
8	BURG KOLOSSI	N34 39 53.547 E032 56 02.356	1000	
9	RAF Akrotiri	N34 35 26 E032 59 17	1000	

RADIO CHANNELS

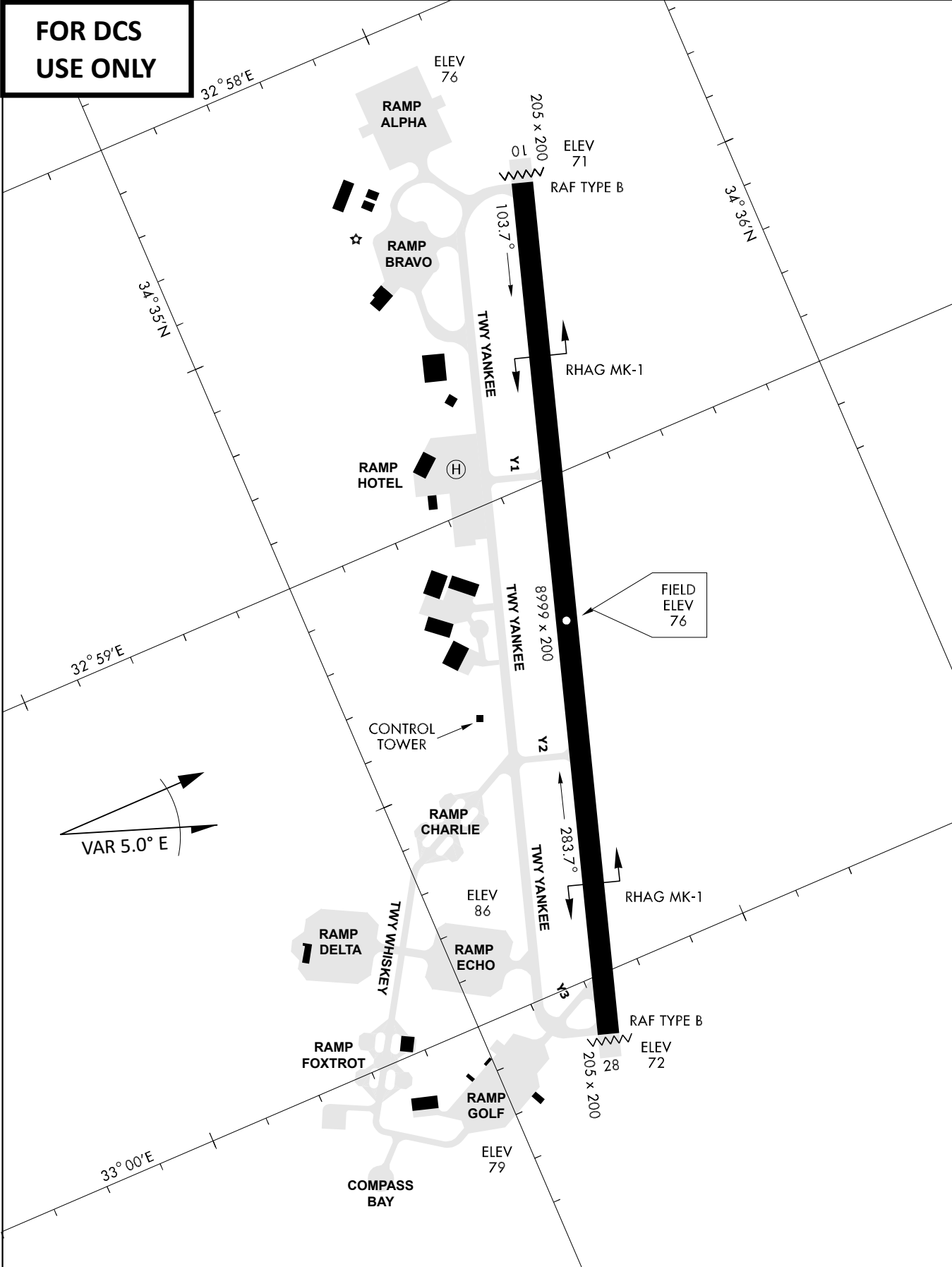
#	Freq	Name
1		Flight/Squadron specific
2	288.2	Akrotiri ATIS
3	240.1	Akrotiri Ground
4	339.85	Aktrotiri Tower
5	335.05	Akrotiri Approach
6	360.1	Incirlik Tower
7	371.35	Incirlik Ground
8	377.475	Incirlik ATIS
9		No Preset
10	127.3	Paphos ATIS
11	353.8	Paphos Tower
12	304.0	CVN-73 George Washington
13	302.0	LHA-1 Tarawa
14	259.0	CV-59 Forrestal
15		No Preset
16	377.8	Overlord
17	265.0	KC-135 Texaco-1 medium/slow
18	319.8	KC-135 Arco-1
19	360.8	KC-135MPRS Arco-2
20	256.0	S-3B Recovery Tanker

RAMROD										
0	1	2	3	4	5	6	7	8	9	
L	A	W	R	E	N	C	I	U	M	
KTC 1400 C										
	0	1	2	3	4	5	6	7	8	9
A	PBMX	GVQ	TID	AY	KU	HEC	NS	RJ	WO	LF
B	BAGN	PUT	SCF	VQ	DH	JKM	LX	YE	OR	WI
C	VIBS	WNO	TEF	GD	KY	RXQ	JH	CA	ML	PU
D	CSXD	WMJ	ELY	BG	AR	QON	UI	FP	VK	TH
E	KEAF	VWT	QDC	RG	SX	JOM	LI	HU	YN	BP
F	GWVI	HMN	KQU	TD	BA	FEJ	RY	OL	SP	XC
G	GIVA	MPF	OBJ	RK	YS	UEH	XT	LC	DQ	NW
H	BODX	WML	YCH	FR	UV	JGN	EA	QI	TS	KP
I	CQIL	BOP	DNU	EV	TX	SRM	KY	WF	JA	GH
J	XEOG	DUY	VRN	WI	CP	HKM	BA	FS	LJ	TQ
K	TMQR	NHG	AFO	PC	LS	UEJ	WY	IB	KV	DX
L	OMPW	JHB	VGT	NK	QY	XRI	EA	SL	UF	CD
M	NCTF	UXS	IQD	VL	EB	PJY	GH	WO	KM	AR
N	FTYD	CLP	KGA	HO	MX	NIE	SV	UR	JW	QB
O	OKFM	IAX	LDH	EN	YR	QGU	SV	BJ	WT	CP
P	NXWK	OJE	LSD	HC	FR	BIU	GT	MY	VP	AQ
Q	FGAK	NWY	XMT	CU	SP	QOR	ED	JV	BH	IL
R	PUQH	ASL	RMK	XY	NJ	TGE	DF	BO	CV	IW
S	HGWN	MDX	URQ	BJ	IV	LKP	FA	OT	YS	CE
T	LRHD	SAK	WQU	FB	MP	OVN	IE	CJ	YG	XT
U	LJWO	FMB	EIS	CN	TD	YKX	QP	VG	RA	HU
V	LCOY	WNU	EJM	XF	KB	DQH	IP	GS	AR	TV
W	KGHI	XAS	EMF	JO	DB	LPN	RU	TW	VC	YQ
X	PSXN	IKT	LHO	WA	JC	EYF	GV	DU	QR	MB
Y	SHBI	OXW	VGP	JE	TA	NUF	MY	CL	KD	QR

NAVAIDS

Id	Name	Channel	Position	Elevation
DAN	Incirlik	21	N37 00.950 E035 26.883	243
AKR	Akrotiri	107	N34 34.765 E032 57.769	147
PHA	Paphos	79	N34 42.997 E032 28.963	35
RMD	Ramat David	84	N32 39.892 E035 11.265	136
OS66	Kuweires Military Aviation Institute	36	N36 11.362 E037 34.226	1200

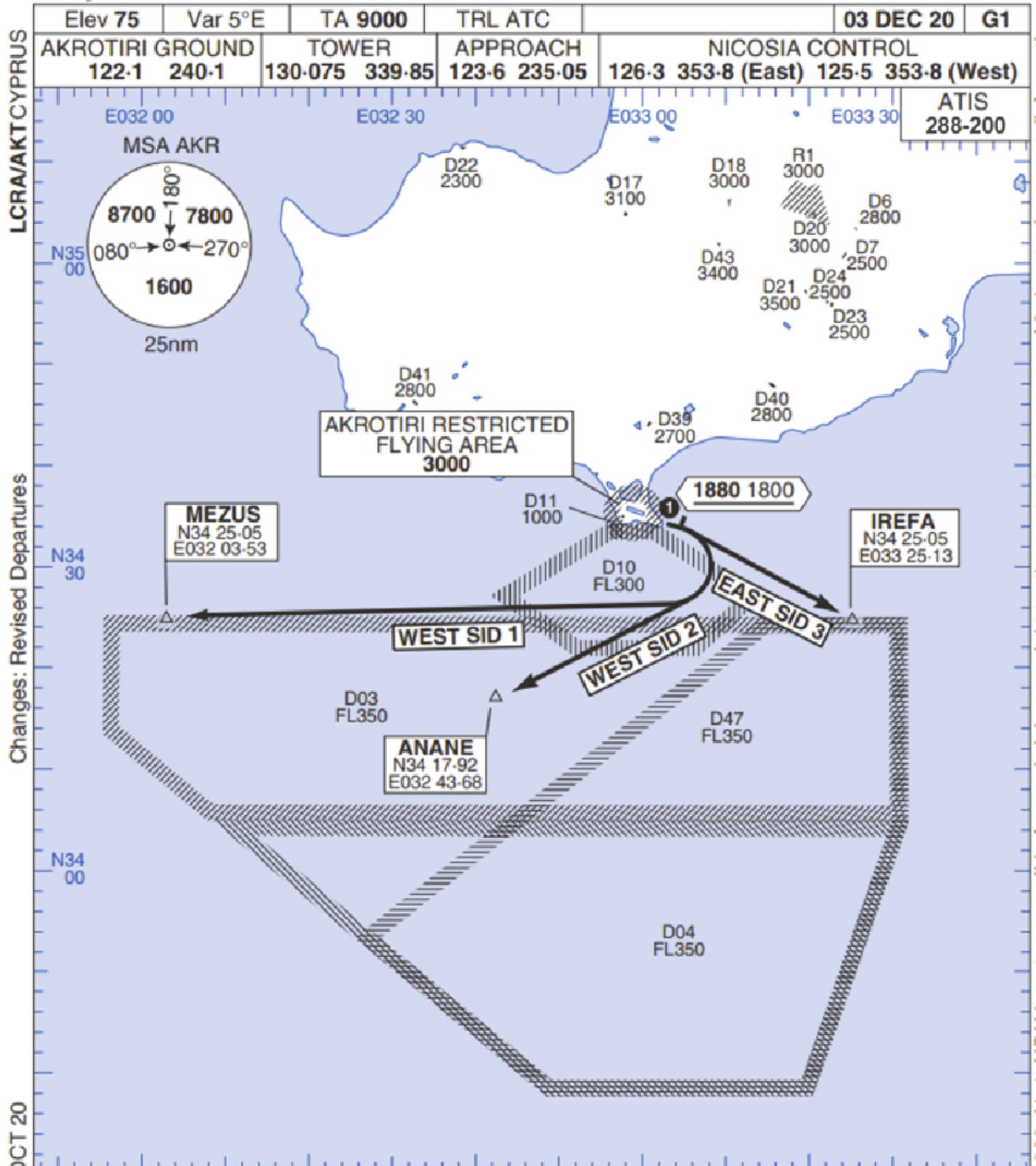
**FOR DCS
 USE ONLY**



ATIS	AKROTIRI GND	AKROTIRI TWR	OVERLORD CONTROL	TACAN	FIELD ELEVATION
288.20 MHz	240.10 122.10	339.85 130.075	377.8	AKR 107X	75 [ft] 23 [m]

Rwy 10 OMNIDIRECTIONAL DEPARTURES

AKROTIRI



LCRA/AKTCYPRUS

Changes: Revised Departures

No1 AIDU Last Amended 06 OCT 20

© UK MOD Crown Copyright 2020. No1 AIDU is not responsible for, and claims no right to, the content or accuracy of 3rd party documents/information.

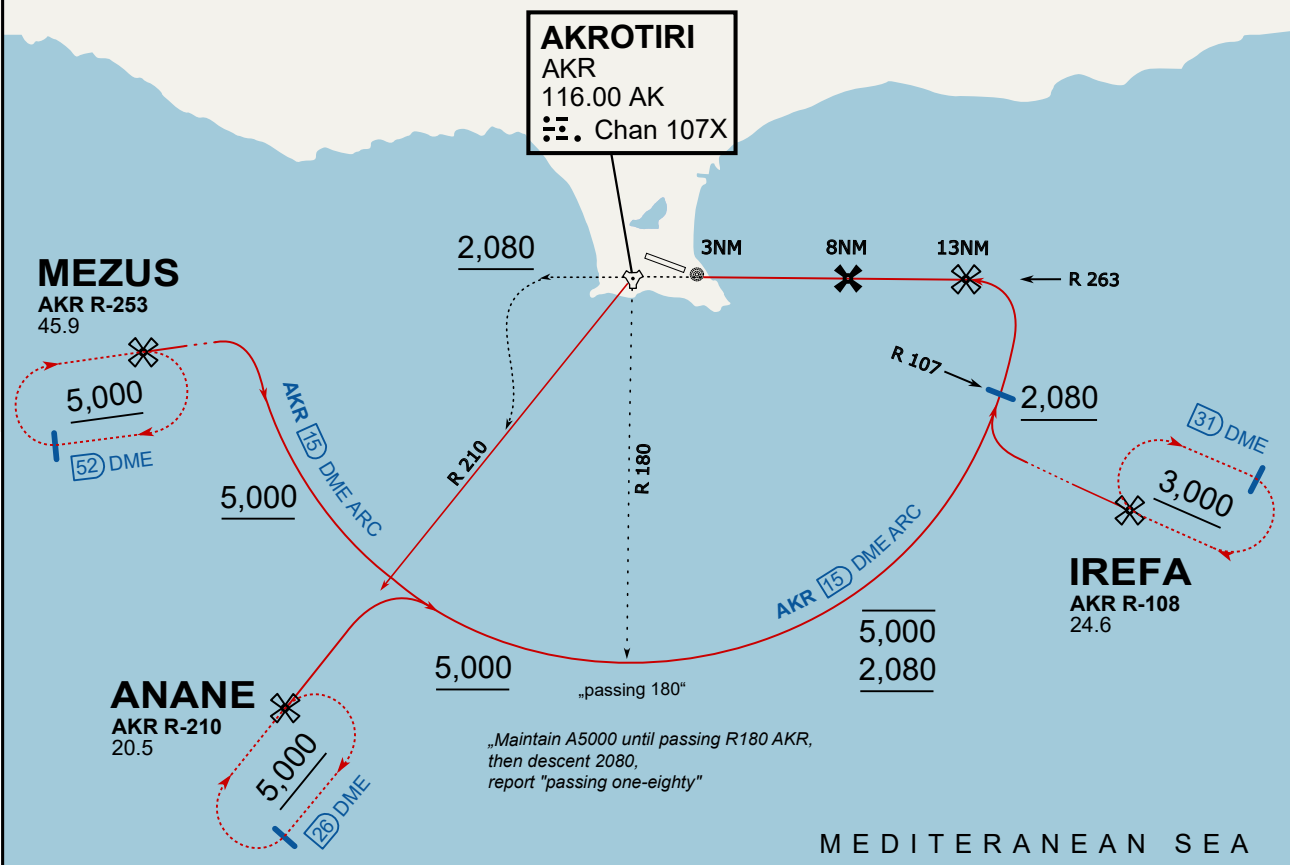
- ① Minimum climb gradient 7% to 1880 1800 for obstacle and operational purposes.
- 2. No turns before DER.
- 3. Turns to north of Rwy **prohibited**.
- 4. Acft unable to locate MEZUS/ANANE/IREFA should request radar vectors from ATC.

SID	RWY	ROUTEING (Including Mnm Noise Routes)
WEST SID 1	10 103°M	Ahead on Rwy Tr to 1880 1800, then right direct to MEZUS. SID terminates at 9000.
WEST SID 2		Ahead on Rwy Tr to 1880 1800, then right direct to ANANE. SID terminates at 9000.
EAST SID 3		Ahead on Rwy Tr to 1880 1800 then right direct to IREFA. SID terminates at 9000.

ATIS
 288.200
AKROTIRI GROUND
 122.100
AKROTIRI TOWER
 339.850
APP (OVERLORD)
 377.800

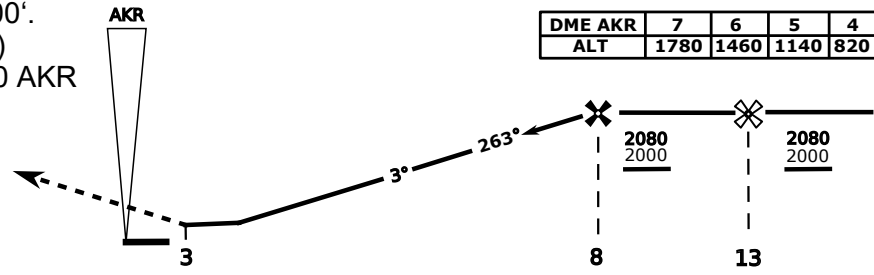
NOT FOR CIVIL USE

CAUTION: If unable to comply with restrictions advise ATC prior to departure.



vJaBoG32 ETRR NAV CHART

On Track 263° climb A 4.000'.
 passing 2.080' (2.000' AAL)
 turn left and intercept R-210 AKR
 to ANANE.
 Enter ANANE Holding.



DME AKR	7	6	5	4
ALT	1780	1460	1140	820

CAT	TAC	CIRCLE	GS (kts)	80	120	150	180	210
A	500(430)	680 (610) 2000m	FAF - MAPt (4.1NM)	3:06	2:03	1:38	1:22	1:10
B	1300m		RoD (fpm)	420	640	800	950	1110
C	780 (710)	780 (710) 3300m	- CIRCLING PROHIBITED N of Rwy - final track is offset 20° right of RCL and Intcp 1.1NM before THR - when established on final contact tower - Timing not Auth to define MAPt					
D	2600m	780 (710) 3600m						
E	1380 (1310)	1380 (1310) 5000m						
	5000m							

