

MISSION DATA CARD

OPORD		Callsign		Mission		Date/Time		
3060/2024		Edelweiss 6		Training		070000JUL24		
Task						Freq		
AO						134.0		
Departure				Recovery				
RWY28 VFR				RWY10 VFR				
#	Callsign		Pilot		IFF	TCN	LSR	NET
-1	Edelweiss 6-1		Kosmoss		1611	1Y	1621	
-2	Edelweiss 6-2		Phil		1612	64Y	1622	

LOADOUT

A/A						GUN	
A/G						CHF	
POD						FLR	
TKS						FUEL	

TOLD

	Takeoff	Target	Joker	Bingo	Land
FUEL	10803				

AIRBASES

	Name	TCN	ATIS	GND	TWR	RWY	Elev	ILS
Dep	Akrotiri AFB	107X	288.2	240.1	339.85	28	62	109.7
Arr	Akrotiri AFB	107X	288.2	240.1	339.85	28	62	109.7

FLIGHTPLAN

#	Name	Navaid/Coords/DME	ALT	TOT
1	PAPA	N34 39 43.973 E032 49 10.352	5000	
2	ECHO	N34 42 31.443 E033 10 00.221	5000	
3	LOSOS	N34 42 35.345 E033 22 11.397	10000	
4	GBR.T1	N35 14 09.292 E033 43 19.040	25000	
5	TGT	N35 25 49.927 E034 05 27.636	25000	
6	RAF Akrotiri	N34 35 26 E032 59 17	0	

SUPPORT**Tanker**

Callsign	TCN	Freq	ALT	TAS
ARCO 1	22Y	319.8	FL222	400
Pos	ARCO1: (N3701 E03457)			

RADIO CHANNELS

#	Freq	Name
1		Flight/Squadron specific
2	288.2	Akrotiri ATIS
3	240.1	Akrotiri Ground
4	339.85	Aktrotiri Tower
5	335.05	Akrotiri Approach
6	360.1	Incirlik Tower
7	371.35	Incirlik Ground
8	377.475	Incirlik ATIS
9		No Preset
10	127.3	Paphos ATIS
11	353.8	Paphos Tower
12	304.0	CVN-73 George Washington
13	302.0	LHA-1 Tarawa
14	259.0	CV-59 Forrestal
15		No Preset
16	377.8	Overlord
17	265.0	KC-135 Texaco-1 medium/slow
18	319.8	KC-135 Arco-1
19	360.8	KC-135MPRS Arco-2
20	256.0	S-3B Recovery Tanker

RAMROD

0	1	2	3	4	5	6	7	8	9
L	A	W	R	E	N	C	I	U	M

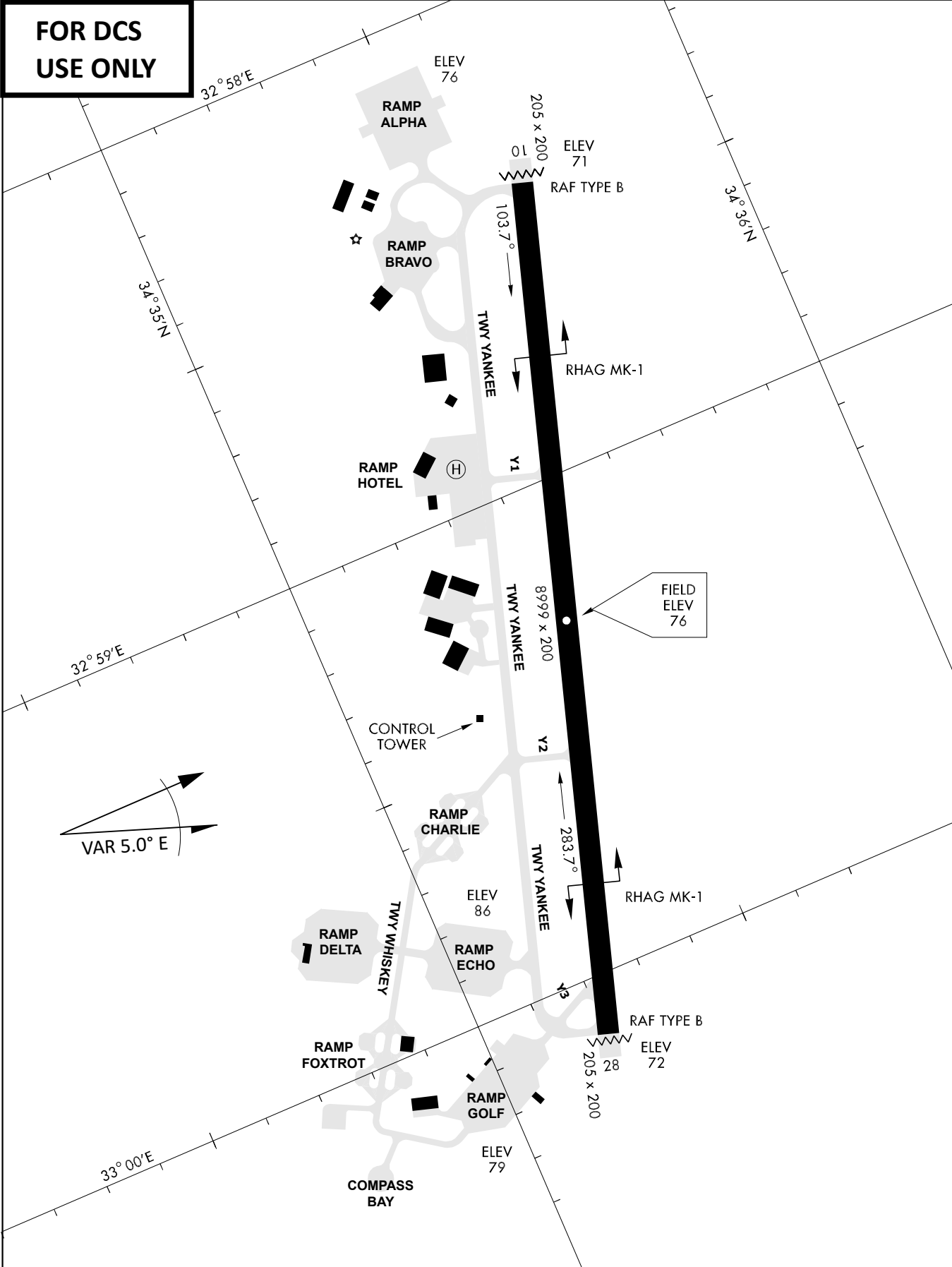
KTC 1400 C

	0	1	2	3	4	5	6	7	8	9
A	PBMX	GVQ	TID	AY	KU	HEC	NS	RJ	WO	LF
B	BAGN	PUT	SCF	VQ	DH	JKM	LX	YE	OR	WI
C	VIBS	WNO	TEF	GD	KY	RXQ	JH	CA	ML	PU
D	CSXD	WMJ	ELY	BG	AR	QON	UI	FP	VK	TH
E	KEAF	VWT	QDC	RG	SX	JOM	LI	HU	YN	BP
F	GWVI	HMN	KQU	TD	BA	FEJ	RY	OL	SP	XC
G	GIVA	MPF	OBJ	RK	YS	UEH	XT	LC	DQ	NW
H	BODX	WML	YCH	FR	UV	JGN	EA	QI	TS	KP
I	CQIL	BOP	DNU	EV	TX	SRM	KY	WF	JA	GH
J	XEOG	DUY	VRN	WI	CP	HKM	BA	FS	LJ	TQ
K	TMQR	NHG	AFO	PC	LS	UEJ	WY	IB	KV	DX
L	OMPW	JHB	VGT	NK	QY	XRI	EA	SL	UF	CD
M	NCTF	UXS	IQD	VL	EB	PJY	GH	WO	KM	AR
N	FTYD	CLP	KGA	HO	MX	NIE	SV	UR	JW	QB
O	OKFM	IAX	LDH	EN	YR	QGU	SV	BJ	WT	CP
P	NXWK	OJE	LSD	HC	FR	BIU	GT	MY	VP	AQ
Q	FGAK	NWY	XMT	CU	SP	QOR	ED	JV	BH	IL
R	PUQH	ASL	RMK	XY	NJ	TGE	DF	BO	CV	IW
S	HGWN	MDX	URQ	BJ	IV	LKP	FA	OT	YS	CE
T	LRHD	SAK	WQU	FB	MP	OVN	IE	CJ	YG	XT
U	LJWO	FMB	EIS	CN	TD	YKX	QP	VG	RA	HU
V	LCOY	WNU	EJM	XF	KB	DQH	IP	GS	AR	TV
W	KGHI	XAS	EMF	JO	DB	LPN	RU	TW	VC	YQ
X	PSXN	IKT	LHO	WA	JC	EYF	GV	DU	QR	MB
Y	SHBI	OXW	VGP	JE	TA	NUF	MY	CL	KD	QR

NAVAIDS

Id	Name	Channel	Position	Elevation
DAN	Incirlik	21	N37 00.950 E035 26.883	243
AKR	Akrotiri	107	N34 34.765 E032 57.769	147
PHA	Paphos	79	N34 42.997 E032 28.963	35
RMD	Ramat David	84	N32 39.892 E035 11.265	136
OS66	Kuweires Military Aviation Institute	36	N36 11.362 E037 34.226	1200

**FOR DCS
 USE ONLY**

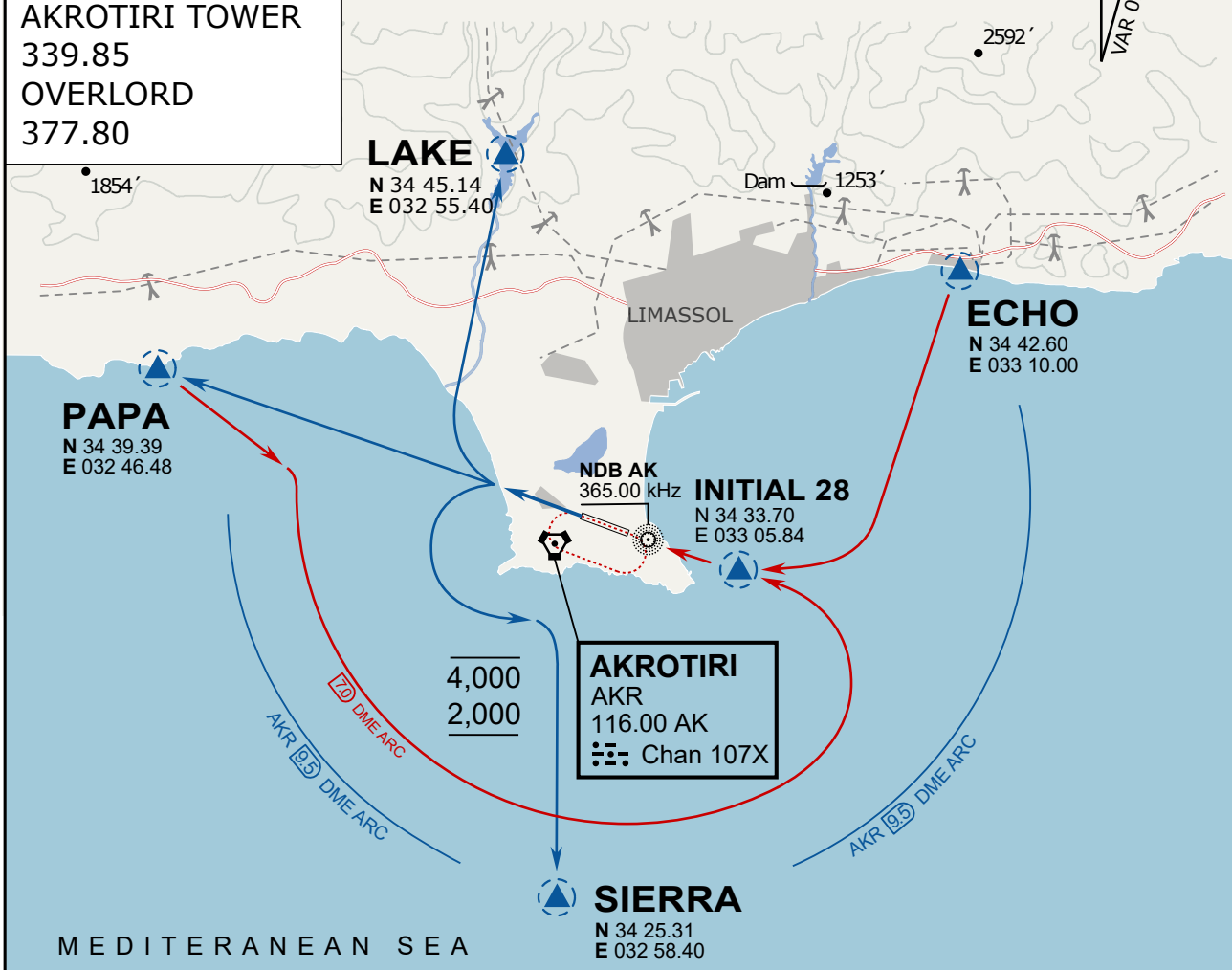


ATIS	AKROTIRI GND	AKROTIRI TWR	OVERLORD CONTROL	TACAN	FIELD ELEVATION
288.20 MHz	240.10 122.10	339.85 130.075	377.8	AKR 107X	75 [ft] 23 [m]

ATIS
 288.20
AKROTIRI GROUND
 240.10
AKROTIRI TOWER
 339.85
OVERLORD
 377.80

NOT FOR CIVIL USE

CAUTION: If unable to comply
 with restrictions advise ATC
 prior to departure.



ARR / DEP ROUTE DESCRIPTION

STRAIGHT-IN RWY28

Pass ENTRY at 5.000' MSL or below, pass INITIAL at 1.500' MSL or below.

OVERHEAD BREAK RWY28

Pass ENTRY at 5.000' MSL or below, pass INITIAL at 2.000' MSL, break to the south.

DEPARTURE GENERAL

Pass Departure end of runway at 1.000' or below.

DEP RWY28 PAPA: Fly straight ahead to exit.

DEP RWY28 LAKE: Fly straight ahead until coast, than right turn direct exit.

DEP RWY28 SIERRA: Fly straight ahead until coastline, then climbing left turn, intercept AKR R-180 to exit.

DEP ECHO: no exit.

ATIS
 288.20
 AKROTIRI GROUND
 240.10
 AKROTIRI TOWER
 339.85
 OVERLORD
 377.80

NOT FOR CIVIL USE

CAUTION: If unable to comply with restrictions advise ATC prior to departure.



LAKE

N 34 45.14
E 032 55.40

Dam 1253'

2592'

1854'

LIMASSOL

ECHO

N 34 42.60
E 033 10.00

INITIAL 10

N 34 37.15
E 032 52.67

AKROTIRI

AKR

116.00 AK

Chan107X

NDB AK
365.00 kHz

PAPA

N 34 39.39
E 032 46.48

4,000
2,000

DME ARC



SIERRA

N 34 25.31
E 032 58.40

MEDITERRANEAN SEA

ARR / DEP ROUTE DESCRIPTION

ARRIVAL GENERAL

Pass Entry at 5.000' or below. Overhead Brake RWY 10: pass INITIAL 10 at 2.000' MSL. Straight-in RWY 10 : pass INITIAL 1.500' or below.

ARR RWY10 PAPA / LAKE: Direct initial.

ARR RWY10 SIERRA: Intercept ARC 7 of AKR to INITIAL 10.

ARR ECHO: no ENTRY.

DEPARTURE GENERAL

Pass Departure end of runway at 1.000' AGL or below. Keep RWY heading until coastline.

DEP RWY10 ECHO: Direct EXIT.

DEP RWY10 SIERRA: Climbing right turn, intercept R180 AKR to Sierra.

DEP RWY10 PAPA: Climbing right turn until R180 AKR, then direct Papa

DEP LAKE: no EXIT.