

MISSION DATA CARD

OPORD		Callsign		Mission		Date/Time		
3057/2024		Raptor 1		Training		061010JUL24		
Task						Freq		
AO						134.0		
Departure				Recovery				
RWY28 VFR				RWY10 VFR				
#	Callsign		Pilot		IFF	TCN	LSR	NET
-1	Raptor 1-1		Jinx		1611	1Y	1621	

LOADOUT

A/A	2xA120C, 2xA9X				GUN	100% HEI-T	
A/G					CHF	120	
POD					FLR	0	
TKS	FT300				FUEL	100%	

TOLD

	Takeoff	Target	Joker	Bingo	Land
FUEL	9166				

AIRBASES

	Name	TCN	ATIS	GND	TWR	RWY	Elev	ILS
Dep	Akrotiri AFB	107X	288.2	240.1	339.85	28	62	109.7
Arr	Akrotiri AFB	107X	288.2	240.1	339.85	28	62	109.7

FLIGHTPLAN

#	Name	Navaid/Coords/DME	ALT	TOT
1	PAPA	N34 39 43.973 E032 49 10.352	5000	
2	ECHO	N34 42 31.443 E033 10 00.221	5000	
3	LOSOS	N34 42 35.345 E033 22 11.397	10000	
4	GBR.T1	N35 14 09.292 E033 43 19.040	25000	
5	TGT	N35 25 49.927 E034 05 27.636	25000	
6	RAF Akrotiri	N34 35 26 E032 59 17	0	

SUPPORT**Tanker**

Callsign	TCN	Freq	ALT	TAS
ARCO 1	22Y	319.8	FL222	400
Pos	ARCO1: (N3701 E03457)			

RADIO CHANNELS

#	Freq	Name
1		Flight/Squadron specific
2	288.2	Akrotiri ATIS
3	240.1	Akrotiri Ground
4	339.85	Aktrotiri Tower
5	335.05	Akrotiri Approach
6	360.1	Incirlik Tower
7	371.35	Incirlik Ground
8	377.475	Incirlik ATIS
9		No Preset
10	127.3	Paphos ATIS
11	353.8	Paphos Tower
12	304.0	CVN-73 George Washington
13	302.0	LHA-1 Tarawa
14	259.0	CV-59 Forrestal
15		No Preset
16	377.8	Overlord
17	265.0	KC-135 Texaco-1 medium/slow
18	319.8	KC-135 Arco-1
19	360.8	KC-135MPRS Arco-2
20	256.0	S-3B Recovery Tanker

RAMROD

0	1	2	3	4	5	6	7	8	9
A	F	T	E	R	S	H	O	C	K

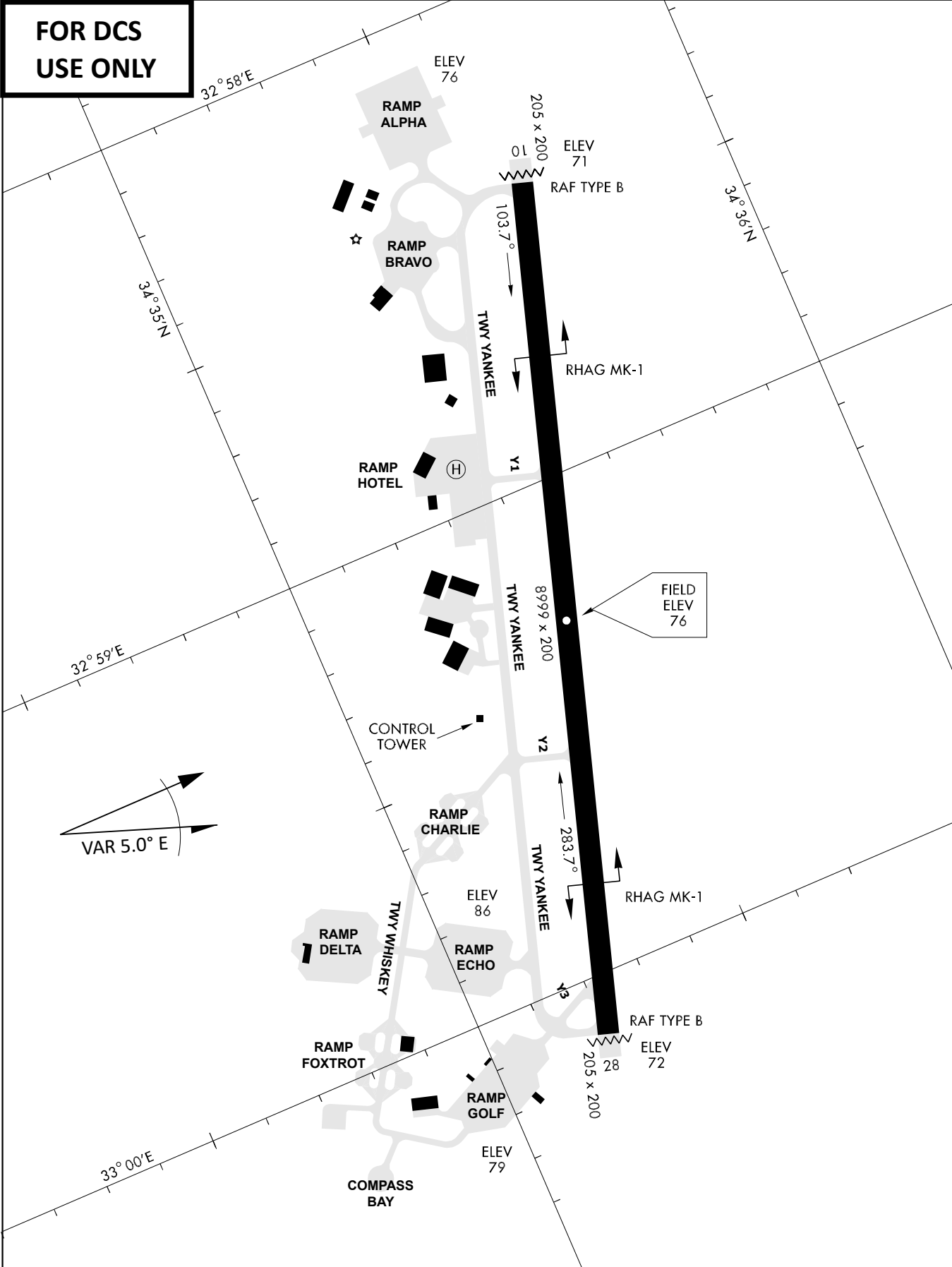
KTC 1400 C

	0	1	2	3	4	5	6	7	8	9
A	HNDU	TOR	GFI	PJ	AL	QWC	XV	KB	YS	ME
B	WBUD	XEQ	STF	OM	RI	HYG	NK	JL	PV	AC
C	XAKE	BQH	TSD	VN	CL	FWO	MU	YJ	IG	PR
D	NUEC	JYR	SGQ	PM	IO	ALX	FT	DH	BV	WK
E	BSNG	JPR	DAU	QK	IF	MHT	VW	EC	YL	OX
F	TBIL	EPY	XNF	AO	GK	SRQ	DV	HU	WJ	MC
G	UIHT	QRJ	GDS	KO	AW	FLP	NV	MC	BY	XE
H	HGJQ	IAB	PXT	RK	FS	EON	DY	CL	WU	VM
I	VFKM	WJD	QIL	EX	NB	CSG	RP	OH	AU	YT
J	SEPG	TFX	MHK	BW	QC	AYN	OJ	DU	RV	IL
K	QRAN	VOW	BCK	IG	EY	THX	FD	PJ	LS	MU
L	TPJL	CIN	DWB	ES	HO	QVF	XM	KU	RG	AY
M	LKFQ	TWO	EXJ	HC	SU	RIG	AB	VD	PN	YM
N	OWFH	SPT	NGE	DR	KU	AXL	YV	BQ	JM	CI
O	WXUR	FPT	QIV	GD	NO	CAJ	SB	EY	MK	HL
P	CLJQ	DNM	EAV	PF	OB	YSH	TX	UR	GW	IK
Q	XLWT	HND	RQV	EJ	IP	GUC	YB	KF	MS	AO
R	TJEG	MWA	RYD	OL	PB	XFH	IV	KQ	CU	SN
S	IOMR	FES	PWK	AB	LV	JUX	QC	ND	YG	TH
T	YNUI	PCM	DOS	LW	FJ	GHA	ER	BV	TQ	XK
U	IXEJ	OPN	MSG	DW	BH	TRL	YU	AQ	KV	FC
V	YTSA	EMR	LHW	FD	KO	IGQ	PV	UJ	NX	BC
W	GBMK	DUO	TAY	IV	XS	RLW	PJ	HC	NF	EQ
X	GAJU	KWS	YHF	PR	XD	ELT	CV	QO	IM	BN
Y	KWNM	GIP	LJE	BT	CV	SQD	XU	YA	RO	HF

NAVAIDS

Id	Name	Channel	Position	Elevation
DAN	Incirlik	21	N37 00.950 E035 26.883	243
AKR	Akrotiri	107	N34 34.765 E032 57.769	147
PHA	Paphos	79	N34 42.997 E032 28.963	35
RMD	Ramat David	84	N32 39.892 E035 11.265	136
OS66	Kuweires Military Aviation Institute	36	N36 11.362 E037 34.226	1200

**FOR DCS
 USE ONLY**

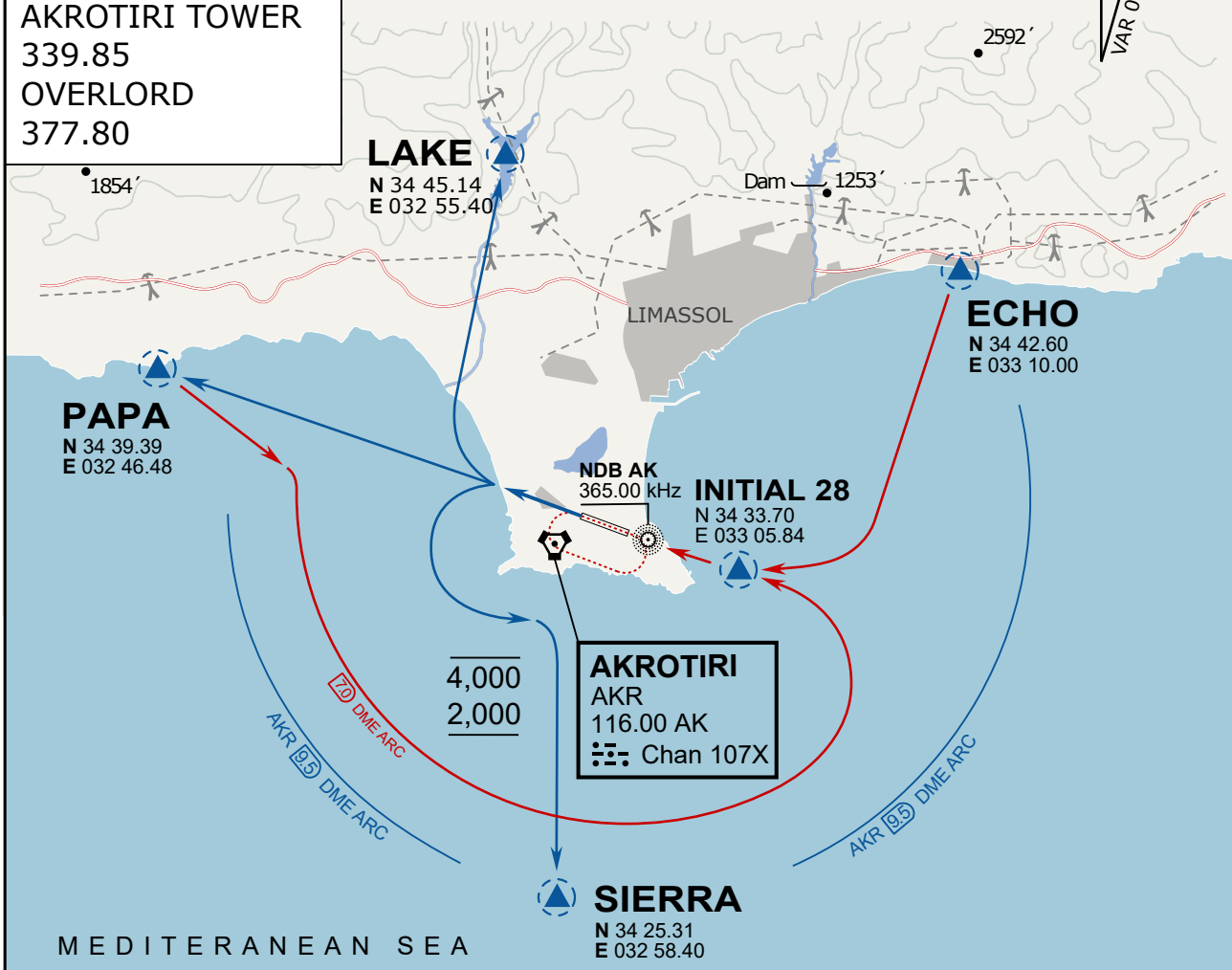


ATIS	AKROTIRI GND	AKROTIRI TWR	OVERLORD CONTROL	TACAN	FIELD ELEVATION
288.20 MHz	240.10 122.10	339.85 130.075	377.8	AKR 107X	75 [ft] 23 [m]

ATIS
 288.20
AKROTIRI GROUND
 240.10
AKROTIRI TOWER
 339.85
OVERLORD
 377.80

NOT FOR CIVIL USE

CAUTION: If unable to comply
 with restrictions advise ATC
 prior to departure.



ARR / DEP ROUTE DESCRIPTION

STRAIGHT-IN RWY28

Pass ENTRY at 5.000' MSL or below, pass INITIAL at 1.500' MSL or below.

OVERHEAD BREAK RWY28

Pass ENTRY at 5.000' MSL or below, pass INITIAL at 2.000' MSL, break to the south.

DEPARTURE GENERAL

Pass Departure end of runway at 1.000' or below.

DEP RWY28 PAPA: Fly straight ahead to exit.

DEP RWY28 LAKE: Fly straight ahead until coast, than right turn direct exit.

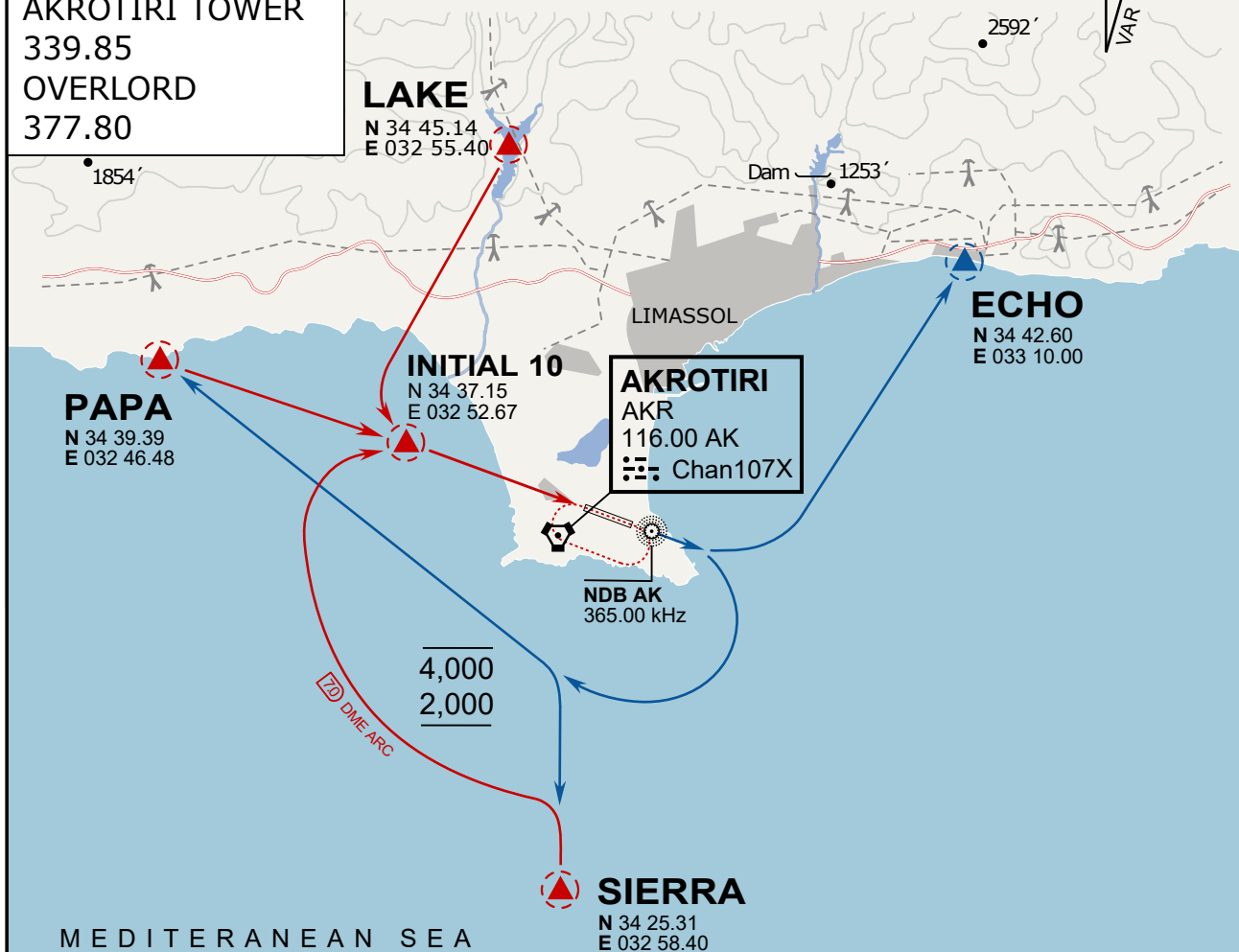
DEP RWY28 SIERRA: Fly straight ahead until coastline, then climbing left turn, intercept AKR R-180 to exit.

DEP ECHO: no exit.

ATIS
288.20
AKROTIRI GROUND
240.10
AKROTIRI TOWER
339.85
OVERLORD
377.80

NOT FOR CIVIL USE

CAUTION: If unable to comply with restrictions advise ATC prior to departure.



ARR / DEP ROUTE DESCRIPTION

ARRIVAL GENERAL

Pass Entry at 5.000' or below. Overhead Brake RWY 10: pass INITIAL 10 at 2.000' MSL. Straight-in RWY 10 : pass INITIAL 1.500' or below.

ARR RWY10 PAPA / LAKE: Direct initial.

ARR RWY10 SIERRA: Intercept ARC 7 of AKR to INITIAL 10.

ARR ECHO: no ENTRY.

DEPARTURE GENERAL

Pass Departure end of runway at 1.000' AGL or below. Keep RWY heading until coastline.

DEP RWY10 ECHO: Direct EXIT.

DEP RWY10 SIERRA: Climbing right turn, intercept R180 AKR to Sierra.

DEP RWY10 PAPA: Climbing right turn until R180 AKR, then direct Papa

DEP LAKE: no EXIT.