

MISSION DATA CARD

| | | | | | | | | |
|-----------|---------------|-------------|-------|-----------|------|-------------|--------|-------|
| OPORD | | Callsign | | Mission | | Date/Time | | |
| 3055/2024 | | Edelweiss 4 | | Training | | 042003JUL24 | | |
| Task | | | | | | | Freq | |
| AO | | | | | | | 264.45 | |
| Departure | | | | Recovery | | | | |
| RWY10 VFR | | | | RWY10 VFR | | | | |
| # | Callsign | | Pilot | | IFF | TCN | LSR | NET |
| -1 | Edelweiss 4-1 | | Monte | | 1741 | 1Y | 1741 | 40/01 |
| -2 | Edelweiss 4-2 | | Phil | | 1742 | 64Y | 1742 | 40/02 |
| -2 | Edelweiss 4-2 | | Phil | | 1742 | 64Y | 1742 | 40/02 |

LOADOUT

| | | | | | | | |
|-----|--------|--|--|--|--|------|------------|
| A/A | 2xA9X | | | | | GUN | 100% HEI-T |
| A/G | | | | | | CHF | 120 |
| POD | | | | | | FLR | 0 |
| TKS | FPU-8A | | | | | FUEL | 100% |

TOLD

| | | | | | |
|------|---------|--------|-------|-------|------|
| | Takeoff | Target | Joker | Bingo | Land |
| FUEL | 13047 | | | | |

AIRBASES

| | | | | | | | | | |
|-----|--------------|--|------|-------|-------|--------|-----|------|-------|
| | Name | | TCN | ATIS | GND | TWR | RWY | Elev | ILS |
| Dep | Akrotiri AFB | | 107X | 288.2 | 240.1 | 339.85 | 28 | 62 | 109.7 |
| Arr | Akrotiri AFB | | 107X | 288.2 | 240.1 | 339.85 | 28 | 62 | 109.7 |

FLIGHTPLAN

| # | Name | Navaid/Coords/DME | ALT | TOT |
|---|------|------------------------|-----|-----|
| 1 | PAPA | N34 39.390 E032 46.480 | | |
| 2 | ECHO | N34 42.600 E033 10 | | |

SUPPORT**Tanker**

| Callsign | TCN | Freq | ALT | TAS |
|----------|-------------------------|--------|-------|-----|
| TEXACO 2 | 44Y | 244.78 | FL150 | 250 |
| Pos | TEXACO2: (N3424 E03403) | | | |

OTHER FLIGHTS

| Callsign | Mission | Airframe | Freq | TCN | Grpld | Laser |
|----------|----------|---------------|--------|---------------------|-------|-------|
| Nazgul 6 | Training | 4x F-15E | 262.45 | 1/64 | | 156X |
| | AO | | Task | AAR & ILS | | |
| Raptor 1 | CAS | 4x F-16C | 134.0 | 1/64 | | 162X |
| | AO | Bomging Range | Task | NCR Strafe Training | | |

RADIO CHANNELS

| # | Freq | Name |
|----|---------|-----------------------------|
| 1 | | Flight/Squadron specific |
| 2 | 288.2 | Akrotiri ATIS |
| 3 | 240.1 | Akrotiri Ground |
| 4 | 339.85 | Aktrotiri Tower |
| 5 | 335.05 | Akrotiri Approach |
| 6 | 360.1 | Incirlik Tower |
| 7 | 371.35 | Incirlik Ground |
| 8 | 377.475 | Incirlik ATIS |
| 9 | | No Preset |
| 10 | 127.3 | Paphos ATIS |
| 11 | 353.8 | Paphos Tower |
| 12 | 304.0 | CVN-73 George Washington |
| 13 | 302.0 | LHA-1 Tarawa |
| 14 | 259.0 | CV-59 Forrestal |
| 15 | | No Preset |
| 16 | 377.8 | Overlord |
| 17 | 265.0 | KC-135 Texaco-1 medium/slow |
| 18 | 319.8 | KC-135 Arco-1 |
| 19 | 360.8 | KC-135MPRS Arco-2 |
| 20 | 256.0 | S-3B Recovery Tanker |

RAMROD

| | | | | | | | | | |
|---|---|---|---|---|---|---|---|---|---|
| 0 | 1 | 2 | 3 | 4 | 5 | 6 | 7 | 8 | 9 |
| M | A | Y | F | L | O | W | E | R | S |

KTC 1400 C

| | 0 | 1 | 2 | 3 | 4 | 5 | 6 | 7 | 8 | 9 |
|---|------|-----|-----|----|----|-----|----|----|----|----|
| A | KXDS | QVC | MUI | AF | HJ | TLO | WN | YG | PR | EB |
| B | CYSN | GQE | POH | IA | MK | WVX | JL | TR | FU | DB |
| C | VDRI | LOB | CQX | MH | WU | GPN | JK | ES | AT | YF |
| D | MHJV | XFY | CGO | KT | EP | IAU | RW | QB | ND | LS |
| E | BCQF | PMK | JRH | SX | UW | LID | NE | AO | TY | GV |
| F | GUIQ | JLK | SBP | AN | RW | TXC | OF | YH | DM | EV |
| G | XQHA | MJY | DRI | GU | VN | LEB | OS | WT | CP | KF |
| H | SHER | MXC | IKQ | DL | WF | BAV | OT | NJ | UP | YG |
| I | PXBM | OTK | DYL | JE | FI | RVC | HA | GW | SN | UQ |
| J | COHU | JED | BNR | KY | LI | QMA | WV | FT | SG | XP |
| K | GEWM | NQY | BVA | HP | LJ | STU | XC | RK | OD | IF |
| L | NYXD | GKL | UBM | FC | VW | STH | JA | OE | IR | QP |
| M | RGOI | YUE | NAL | SM | PK | TDJ | WV | BC | XF | HQ |
| N | KSFO | LTQ | IHM | NB | JG | DXY | WC | VU | ER | PA |
| O | MQUX | ACL | BGF | SD | VT | KRO | WI | YJ | HN | EP |
| P | HSDJ | XFN | AQV | UK | IY | MCT | OG | RB | EW | LP |
| Q | AYGD | LEQ | TXO | NC | RK | UHS | JP | BF | VW | MI |
| R | GSMR | WHD | QOP | FB | IU | KTV | YN | LC | EX | JA |
| S | JWQC | BDG | AYI | UF | SO | LNE | VR | MH | PK | XT |
| T | MAYR | QLP | JDT | OS | NC | XGK | EI | WU | BV | HF |
| U | AOCY | NTQ | FLI | KB | EP | HRX | JD | VG | UM | SW |
| V | TPVR | UMH | EFW | GX | OQ | AID | BJ | KL | SC | NY |
| W | FVOL | CHU | NWS | MA | TB | PQY | ID | XE | KR | GJ |
| X | MKNW | FUT | JYL | VB | IO | PGS | AX | RE | DC | QH |
| Y | UBEF | MRD | CXP | TG | JH | YQL | IV | AS | KW | NO |

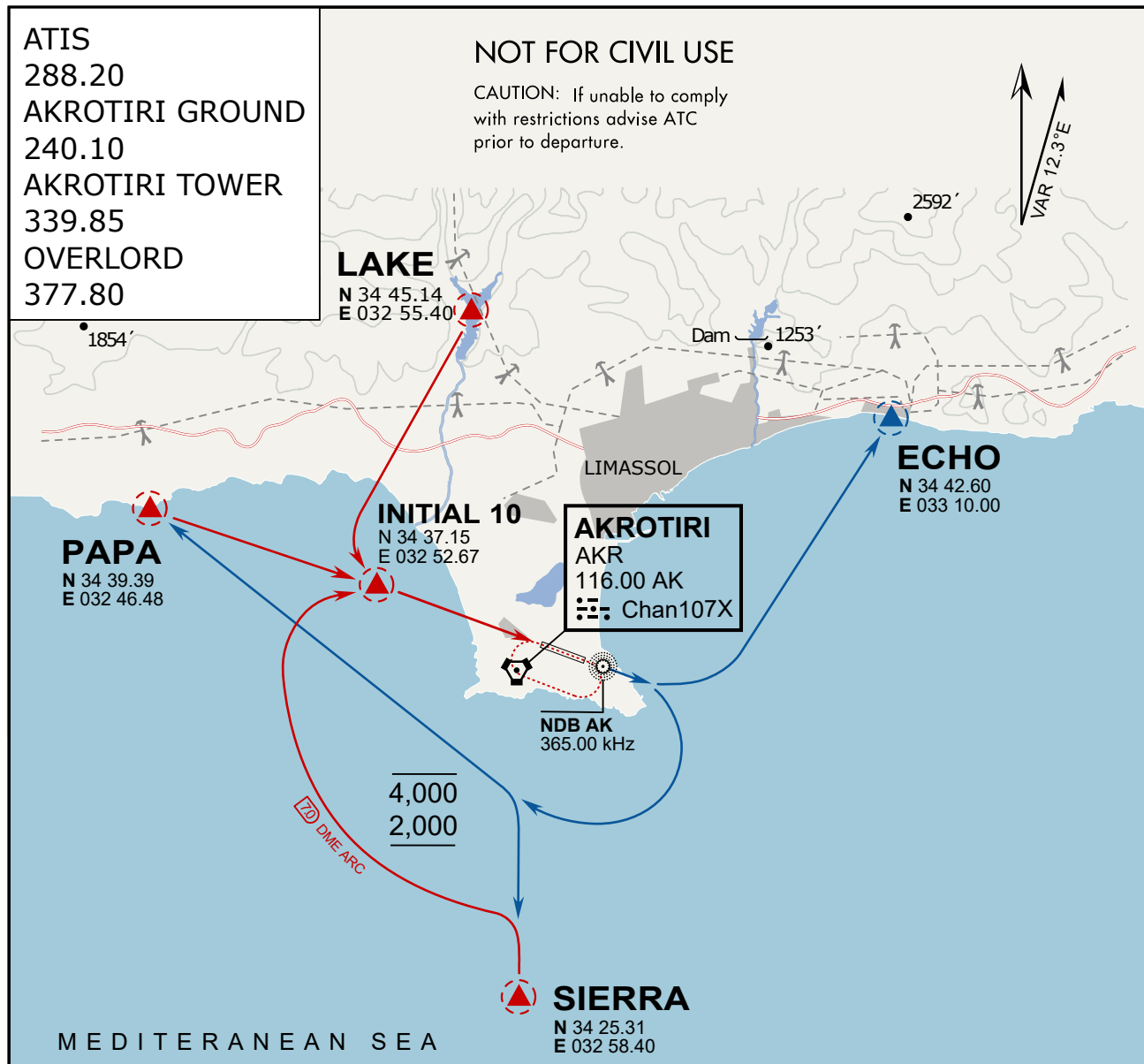
NAVAIDS

| Id | Name | Channel | Position | Elevation |
|-----------|---|----------------|------------------------|------------------|
| DAN | Incirlik | 21 | N37 00.950 E035 26.883 | 243 |
| AKR | Akrotiri | 107 | N34 34.765 E032 57.769 | 147 |
| PHA | Paphos | 79 | N34 42.997 E032 28.963 | 35 |
| RMD | Ramat David | 84 | N32 39.892 E035 11.265 | 136 |
| OS66 | Kuweires Military Aviation Institute | 36 | N36 11.362 E037 34.226 | 1200 |

**FOR DCS
 USE ONLY**



| ATIS | AKROTIRI GND | AKROTIRI TWR | OVERLORD CONTROL | TACAN | FIELD ELEVATION |
|------------|-----------------|------------------|------------------|----------|-----------------------|
| 288.20 MHz | 240.10 122.10 | 339.85 130.075 | 377.8 | AKR 107X | 75 [ft] 23 [m] |



ARR / DEP ROUTE DESCRIPTION

ARRIVAL GENERAL

Pass Entry at 5.000' or below. Overhead Brake RWY 10: pass INITIAL 10 at 2.000' MSL.
Straight-in RWY 10 : pass INITIAL 1.500' or below.

ARR RWY10 PAPA / LAKE: Direct initial.

ARR RWY10 SIERRA: Intercept ARC 7 of AKR to INITIAL 10.

ARR ECHO: no ENTRY.

DEPARTURE GENERAL

Pass Departure end of runway at 1.000' AGL or below. Keep RWY heading until coastline.

DEP RWY10 ECHO: Direct EXIT.

DEP RWY10 SIERRA: Climbing right turn, intercept R180 AKR to Sierra.

DEP RWY10 PAPA: Climbing right turn until R180 AKR, then direct Papa

DEP LAKE: no EXIT.

ATIS
288.20
AKROTIRI GROUND
240.10
AKROTIRI TOWER
339.85
OVERLORD
377.80

NOT FOR CIVIL USE

CAUTION: If unable to comply with restrictions advise ATC prior to departure.



MEDITERRANEAN SEA

ARR / DEP ROUTE DESCRIPTION

ARRIVAL GENERAL

Pass Entry at 5.000' or below. Overhead Brake RWY 10: pass INITIAL 10 at 2.000' MSL.
Straight-in RWY 10 : pass INITIAL 1.500' or below.

ARR RWY10 PAPA / LAKE: Direct initial.

ARR RWY10 SIERRA: Intercept ARC 7 of AKR to INITIAL 10.

ARR ECHO: no ENTRY.

DEPARTURE GENERAL

Pass Departure end of runway at 1.000' AGL or below. Keep RWY heading until coastline.

DEP RWY10 ECHO: Direct EXIT.

DEP RWY10 SIERRA: Climbing right turn, intercept R180 AKR to Sierra.

DEP RWY10 PAPA: Climbing right turn until R180 AKR, then direct Papa

DEP LAKE: no EXIT.