

MISSION DATA CARD

OPORD		Callsign		Mission		Date/Time		
3054/2024		Raptor 1		CAS		050000JUL24		
Task	NCR Strafe Training					Freq		
AO	Bomging Range					134.0		
Departure				Recovery				
RWY28 VFR				RWY10 VFR				
#	Callsign		Pilot		IFF	TCN	LSR	NET
-1	Raptor 1-1		Hercules		1611	1Y	1621	

LOADOUT

A/A	2xA120C, 2xA9X				GUN	100% HEI-T	
A/G					CHF	60	
POD					FLR	60	
TKS	FT300				FUEL	100%	

TOLD

	Takeoff	Target	Joker	Bingo	Land
FUEL	9166	6000	3500	2500	1500

AIRBASES

	Name	TCN	ATIS	GND	TWR	RWY	Elev	ILS
Dep	Akrotiri AFB	107X	288.2	240.1	339.85	28	62	109.7
Arr	Akrotiri AFB	107X	288.2	240.1	339.85	28	62	109.7
Div	Paphos Internationl	79X	127.3		353.8	29	40	108.9

FLIGHTPLAN

#	Name	Navaid/Coords/DME	ALT	TOT
1	PAPA	N34 39 43.973 E032 49 10.352	5000	
2	ECHO	N34 42 31.443 E033 10 00.221	5000	
3	Larnaca Intl	N34 52 24 E033 37 26	15000	
4	HOLD	N34 43 29.918 E033 46 33.198	15000	
5	IP	N34 50 19.582 E033 52 06.392	5000	
6	TGT	N34 56 55.430 E033 51 52.014	0	
7	EMILI	N34 38 23.355 E034 02 35.169	15000	
8	IREFA	N34 25 19.679 E033 26 39.870	5000	
9	RAF Akrotiri	N34 35 26 E032 59 17	1500	

COMMS

Radio	Usage
1	#2 #4 #16 #2 #4
2	134.00

SUPPORT**Tanker**

Callsign	TCN	Freq	ALT	TAS
ARCO 1	22Y	319.8	FL222	400
Pos	ARCO1: (N3701 E03457)			

OTHER FLIGHTS

Callsign	Mission	Airframe	Freq	TCN	Grpld	Laser
Nazgul 6	Training	4x F-15E	262.45	1/64		156X
AO		Task	AAR & ILS			
Edelweiss 4	Training	2x F/A-18C	264.45	1/64	40	174X
AO		Task				

RADIO CHANNELS

#	Freq	Name
1		Flight/Squadron specific
2	288.2	Akrotiri ATIS
3	240.1	Akrotiri Ground
4	339.85	Aktrotiri Tower
5	335.05	Akrotiri Approach
6	360.1	Incirlik Tower
7	371.35	Incirlik Ground
8	377.475	Incirlik ATIS
9		No Preset
10	127.3	Paphos ATIS
11	353.8	Paphos Tower
12	304.0	CVN-73 George Washington
13	302.0	LHA-1 Tarawa
14	259.0	CV-59 Forrestal
15		No Preset
16	377.8	Overlord
17	265.0	KC-135 Texaco-1 medium/slow
18	319.8	KC-135 Arco-1
19	360.8	KC-135MPRS Arco-2
20	256.0	S-3B Recovery Tanker

RAMROD

0	1	2	3	4	5	6	7	8	9
V	U	L	C	A	N	I	Z	E	D

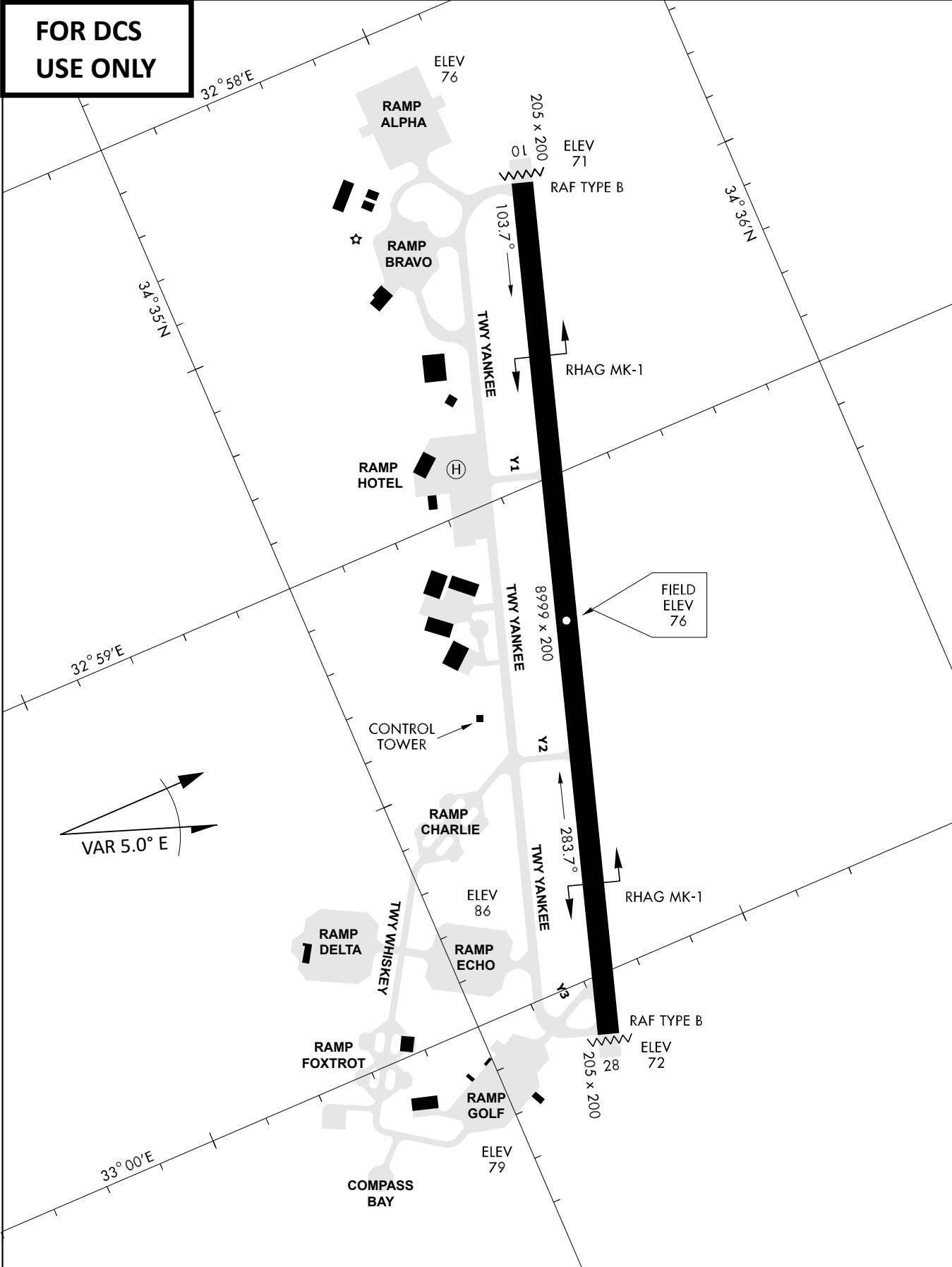
KTC 1400 C

	0	1	2	3	4	5	6	7	8	9
A	BIKS	HPV	OTE	NX	RJ	LCY	WD	UM	QA	GF
B	EFOR	QKC	AUB	JV	NY	HDW	PM	TL	XI	SG
C	KQYL	TND	HJS	GV	UC	BER	WO	FM	AP	XI
D	XKEW	QGT	HBU	JS	NO	DAY	LP	FC	VI	RM
E	GMPS	NIL	TJQ	VK	UE	RYW	AO	DF	CB	XH
F	QEOS	JGW	CBH	IY	DM	AXR	KV	UN	LT	PF
G	UBNX	OIR	JVH	DQ	YT	CPW	GM	FE	LK	AS
H	UETN	QGD	KVJ	SF	PX	CRO	WM	IB	HL	AY
I	POVB	NYM	QKH	GI	FA	REW	JS	CD	UX	TL
J	IYAC	SUG	QKV	JO	XD	ELN	FR	TM	HP	BW
K	EXBK	FNJ	SRI	UV	TH	LGW	OY	PQ	MA	CD
L	EOVU	QWY	AMG	CX	NB	IKR	FL	HJ	DP	ST
M	GTBV	AIN	XHE	MO	SW	PLQ	UF	DR	YK	JC
N	JLRF	TMU	KHI	BG	YS	CWN	DE	VO	XP	AQ
O	YEBX	TDC	UJP	ON	LM	IKS	RV	FA	WQ	GH
P	NLVE	UIQ	TAP	BY	KX	OCM	WH	RS	GJ	FD
Q	OEWD	LJH	AUV	QB	PK	GMT	YC	NI	XF	RS
R	NHWU	XIT	QRB	DA	EL	SMJ	OG	CP	YF	KV
S	VDTS	UOA	WPR	XH	LQ	CJG	BI	ME	NK	YF
T	WGAH	BQS	OKY	FU	ID	JML	VC	XR	PE	NT
U	JKVM	CYD	TLF	BE	QH	NIU	AX	WP	OS	GR
V	GNPS	FCK	AHT	BD	IV	JRY	UL	EW	MO	XQ
W	ITCB	UDK	FSL	EQ	GX	YOV	RH	AW	NM	JP
X	RFIQ	MBO	CYW	LU	VG	SAK	ND	TE	HP	XJ
Y	AKPE	WBF	QLX	IS	JC	YVT	HO	NR	GU	MD

NAVAIDS

Id	Name	Channel	Position	Elevation
DAN	Incirlik	21	N37 00.950 E035 26.883	243
AKR	Akrotiri	107	N34 34.765 E032 57.769	147
PHA	Paphos	79	N34 42.997 E032 28.963	35
RMD	Ramat David	84	N32 39.892 E035 11.265	136
OS66	Kuweires Military Aviation Institute	36	N36 11.362 E037 34.226	1200

**FOR DCS
 USE ONLY**

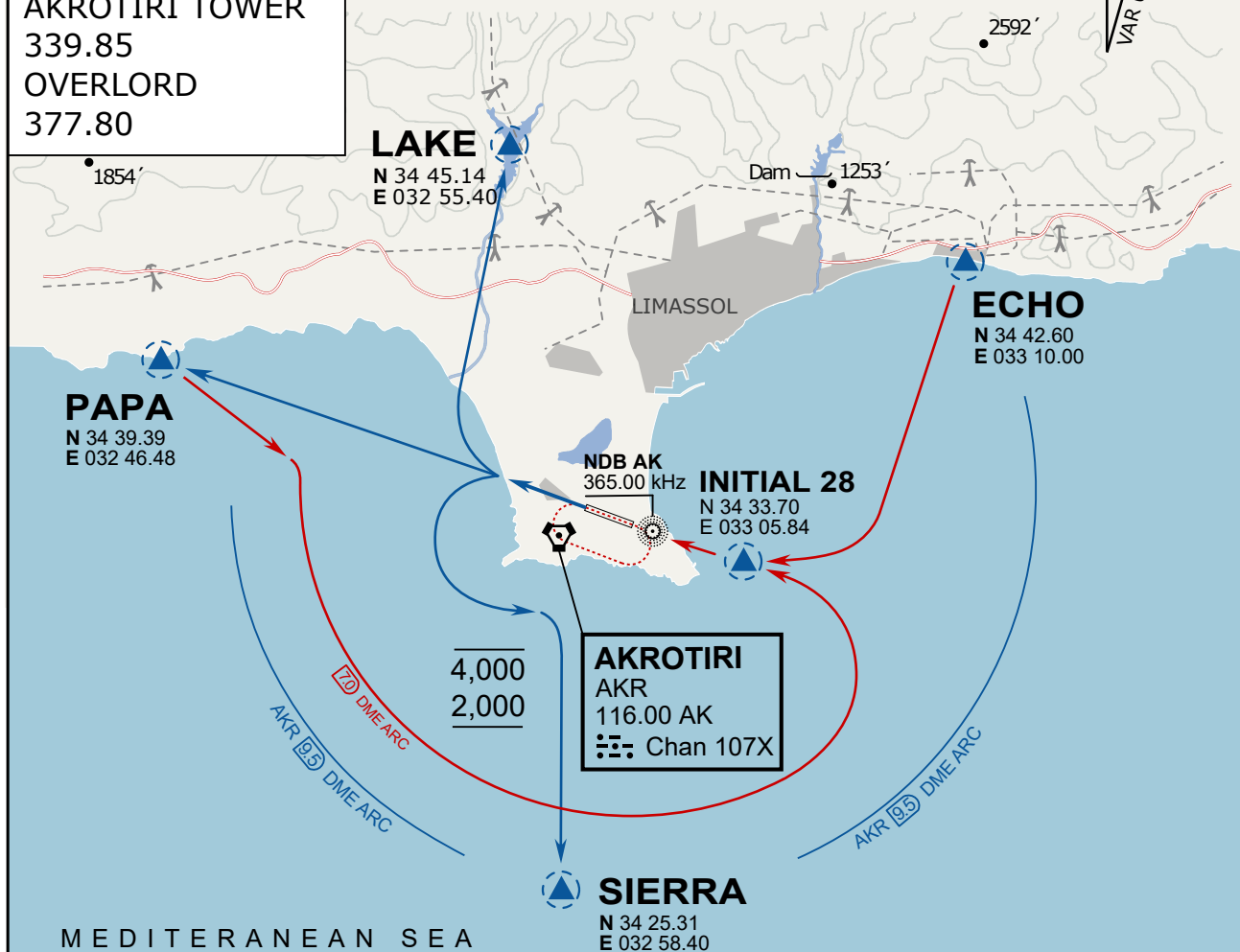


ATIS	AKROTIRI GND	AKROTIRI TWR	OVERLORD CONTROL	TACAN	FIELD ELEVATION
288.20 MHz	240.10 122.10	339.85 130.075	377.8	AKR 107X	75 [ft] 23 [m]

ATIS
288.20
AKROTIRI GROUND
240.10
AKROTIRI TOWER
339.85
OVERLORD
377.80

NOT FOR CIVIL USE

CAUTION: If unable to comply with restrictions advise ATC prior to departure.



ARR / DEP ROUTE DESCRIPTION

STRAIGHT-IN RWY28

Pass ENTRY at 5.000' MSL or below, pass INITIAL at 1.500' MSL or below.

OVERHEAD BREAK RWY28

Pass ENTRY at 5.000' MSL or below, pass INITIAL at 2.000' MSL, break to the south.

DEPARTURE GENERAL

Pass Departure end of runway at 1.000' or below.

DEP RWY28 PAPA: Fly straight ahead to exit.

DEP RWY28 LAKE: Fly straight ahead until coast, than right turn direct exit.

DEP RWY28 SIERRA: Fly straight ahead until coastline, then climbing left turn, intercept AKR R-180 to exit.

DEP ECHO: no exit.

ATIS

288.20

AKROTIRI GROUND

240.10

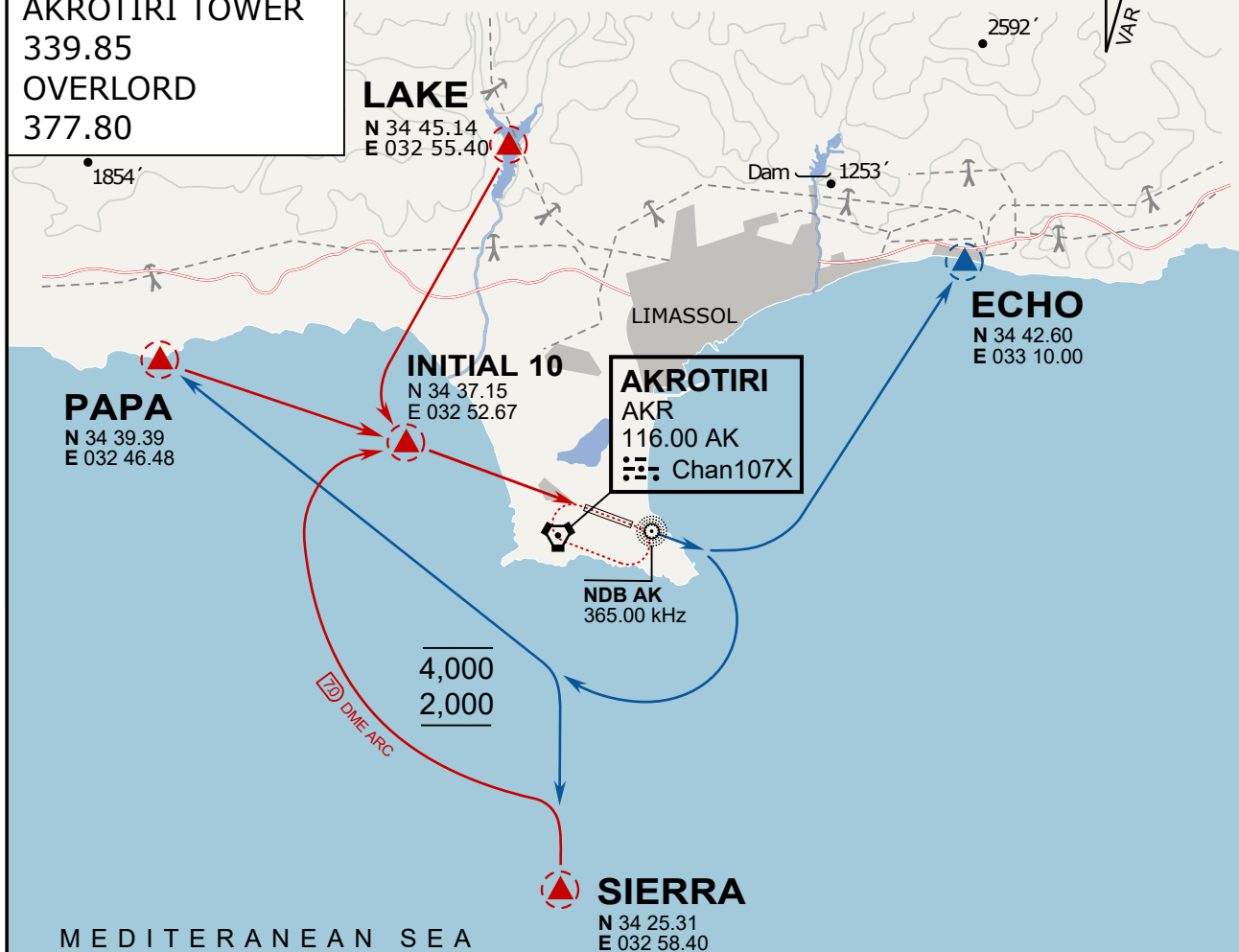
AKROTIRI TOWER

339.85

OVERLORD

377.80

NOT FOR CIVIL USE

CAUTION: If unable to comply
with restrictions advise ATC
prior to departure.

ARR / DEP ROUTE DESCRIPTION

ARRIVAL GENERAL

Pass Entry at 5.000' or below. Overhead Brake RWY 10: pass INITIAL 10 at 2.000' MSL.
Straight-in RWY 10 : pass INITIAL 1.500' or below.

ARR RWY10 PAPA / LAKE: Direct initial.

ARR RWY10 SIERRA: Intercept ARC 7 of AKR to INITIAL 10.

ARR ECHO: no ENTRY.

DEPARTURE GENERAL

Pass Departure end of runway at 1.000' AGL or below. Keep RWY heading until coastline.

DEP RWY10 ECHO: Direct EXIT.

DEP RWY10 SIERRA: Climbing right turn, intercept R180 AKR to Sierra.

DEP RWY10 PAPA: Climbing right turn until R180 AKR, then direct Papa

DEP LAKE: no EXIT.

NOT AVAILABLE

NOT AVAILABLE