

MISSION DATA CARD

OPORD		Callsign		Mission		Date/Time	
3052/2024		Nazgul 6		Training		042000JUL24	
Task	AAR & ILS					Freq	
AO						262.45	
Departure				Recovery			
RWY28 VFR				ILS 28			
#	Callsign	Pilot	IFF	TCN	LSR	NET	
-1	Nazgul 6-1	Striver/Uta	1161	1Y	1561		
-2	Nazgul 6-2	Razorback/TaB	1162	64Y	1562		
-3	Nazgul 6-3	Repsus/Lempo	1163	64X	1563		

LOADOUT

A/A	2xA120C, 2xA9M			GUN	100% SAPHEI
A/G				CHF	120
POD	TGT, NAV			FLR	60
TKS				FUEL	50%

TOLD

	Takeoff	Target	Joker	Bingo	Land
FUEL	11294				

AIRBASES

	Name	TCN	ATIS	GND	TWR	RWY	Elev	ILS
Dep	Akrotiri AFB	107X	288.2	240.1	339.85	28	62	109.7
Arr	Akrotiri AFB	107X	288.2	240.1	339.85	28	62	109.7
Div	Incirlik AFB	21X	$\frac{377.47}{5}$	371.35	360.1	5	190	

FLIGHTPLAN

#	Name	Navaid/Coords/DME	ALT	TOT
1	INITIAL 23	N37 03.956 E035 31.866		
2	FALCON	N37 05.067 E035 40.888		
3	TIGER	N37 10.618 E035 35.732		
4	INITIAL 05	N36 56.654 E035 19.839		
5	EAGLE	N36 52.938 E035 21.611		
6	IREFA	N34 25.328 E033 26.664		
7	ANANE	N34 18.048 E032 43.619		
8	MEZUS	N34 25.109 E032 03.519		

COMMS

Radio	Usage
1	262.45
2	2 / 4 / 16 / 18 / 16 / 4

SUPPORT**Tanker**

Callsign	TCN	Freq	ALT	TAS
ARCO 1	22Y	319.8	FL222	400
	Pos	ARCO1: (N3701 E03457)		
SHELL 3	93Y	278.75	FL170	215
	Pos	SHELL3: (N3436 E03419)		

AWACS

Callsign	Freq	ALT	Pos
OVERLORD2	377.8	FL320	N3713 E03643 - N3714 E03749

OTHER FLIGHTS

Callsign	Mission	Airframe	Freq	TCN	Grpld	Laser
Raptor 1	CAS	4x F-16C	134.0	1/64		162X
AO	Bomging Range	Task	NCR Strafe Training			
Edelweiss 4	Training	2x F/A-18C	264.45	1/64	40	174X
AO		Task				

RADIO CHANNELS

#	Freq	Name
1		Flight/Squadron specific
2	288.2	Akrotiri ATIS
3	240.1	Akrotiri Ground
4	339.85	Aktrotiri Tower
5	335.05	Akrotiri Approach
6	360.1	Incirlik Tower
7	371.35	Incirlik Ground
8	377.475	Incirlik ATIS
9		No Preset
10	127.3	Paphos ATIS
11	353.8	Paphos Tower
12	304.0	CVN-73 George Washington
13	302.0	LHA-1 Tarawa
14	259.0	CV-59 Forrestal
15		No Preset
16	377.8	Overlord
17	265.0	KC-135 Texaco-1 medium/slow
18	319.8	KC-135 Arco-1
19	360.8	KC-135MPRS Arco-2
20	256.0	S-3B Recovery Tanker

RAMROD

0	1	2	3	4	5	6	7	8	9
M	A	Y	F	L	O	W	E	R	S

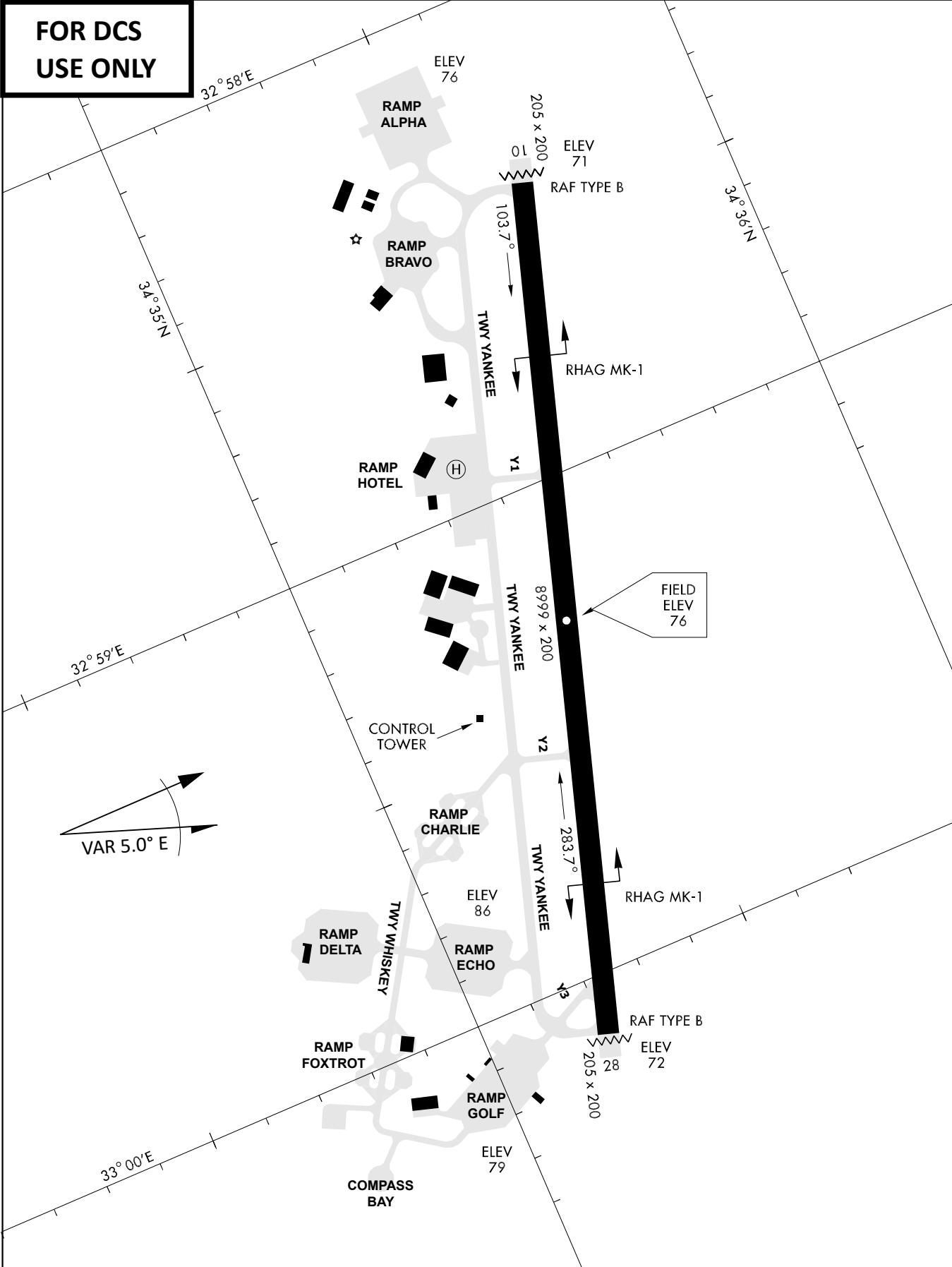
KTC 1400 C

	0	1	2	3	4	5	6	7	8	9
A	KXDS	QVC	MUI	AF	HJ	TLO	WN	YG	PR	EB
B	CYSN	GQE	POH	IA	MK	WVX	JL	TR	FU	DB
C	VDRI	LOB	CQX	MH	WU	GPN	JK	ES	AT	YF
D	MHJV	XFY	CGO	KT	EP	IAU	RW	QB	ND	LS
E	BCQF	PMK	JRH	SX	UW	LID	NE	AO	TY	GV
F	GUIQ	JLK	SBP	AN	RW	TXC	OF	YH	DM	EV
G	XQHA	MJY	DRI	GU	VN	LEB	OS	WT	CP	KF
H	SHER	MXC	IKQ	DL	WF	BAV	OT	NJ	UP	YG
I	PXBM	OTK	DYL	JE	FI	RVC	HA	GW	SN	UQ
J	COHU	JED	BNR	KY	LI	QMA	WV	FT	SG	XP
K	GEWM	NQY	BVA	HP	LJ	STU	XC	RK	OD	IF
L	NYXD	GKL	UBM	FC	VW	STH	JA	OE	IR	QP
M	RGOI	YUE	NAL	SM	PK	TDJ	WV	BC	XF	HQ
N	KSFO	LTQ	IHM	NB	JG	DXY	WC	VU	ER	PA
O	MQUX	ACL	BGF	SD	VT	KRO	WI	YJ	HN	EP
P	HSDJ	XFN	AQV	UK	IY	MCT	OG	RB	EW	LP
Q	AYGD	LEQ	TXO	NC	RK	UHS	JP	BF	VW	MI
R	GSMR	WHD	QOP	FB	IU	KTV	YN	LC	EX	JA
S	JWQC	BDG	AYI	UF	SO	LNE	VR	MH	PK	XT
T	MAYR	QLP	JDT	OS	NC	XGK	EI	WU	BV	HF
U	AOCY	NTQ	FLI	KB	EP	HRX	JD	VG	UM	SW
V	TPVR	UMH	EFW	GX	OQ	AID	BJ	KL	SC	NY
W	FVOL	CHU	NWS	MA	TB	PQY	ID	XE	KR	GJ
X	MKNW	FUT	JYL	VB	IO	PGS	AX	RE	DC	QH
Y	UBEF	MRD	CXP	TG	JH	YQL	IV	AS	KW	NO

NAVAIDS

Id	Name	Channel	Position	Elevation
DAN	Incirlik	21	N37 00.950 E035 26.883	243
AKR	Akrotiri	107	N34 34.765 E032 57.769	147
PHA	Paphos	79	N34 42.997 E032 28.963	35
RMD	Ramat David	84	N32 39.892 E035 11.265	136
OS66	Kuweires Military Aviation Institute	36	N36 11.362 E037 34.226	1200

**FOR DCS
 USE ONLY**

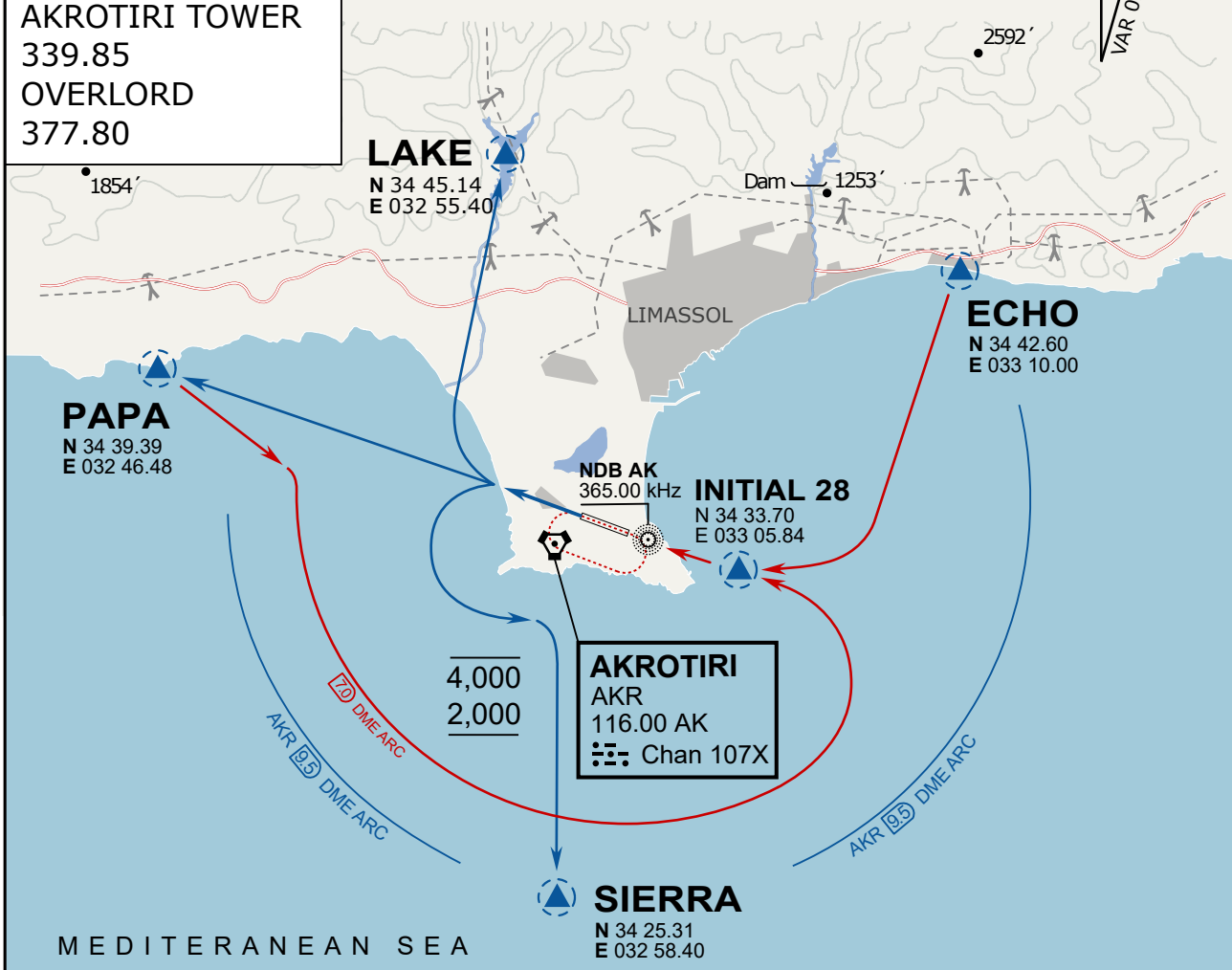


ATIS	AKROTIRI GND	AKROTIRI TWR	OVERLORD CONTROL	TACAN	FIELD ELEVATION
288.20 MHz	240.10 122.10	339.85 130.075	377.8	AKR 107X	75 [ft] 23 [m]

ATIS
 288.20
 AKROTIRI GROUND
 240.10
 AKROTIRI TOWER
 339.85
 OVERLORD
 377.80

NOT FOR CIVIL USE

CAUTION: If unable to comply with restrictions advise ATC prior to departure.



ARR / DEP ROUTE DESCRIPTION

STRAIGHT-IN RWY28

Pass ENTRY at 5.000' MSL or below, pass INITIAL at 1.500' MSL or below.

OVERHEAD BREAK RWY28

Pass ENTRY at 5.000' MSL or below, pass INITIAL at 2.000' MSL, break to the south.

DEPARTURE GENERAL

Pass Departure end of runway at 1.000' or below.

DEP RWY28 PAPA: Fly straight ahead to exit.

DEP RWY28 LAKE: Fly straight ahead until coast, than right turn direct exit.

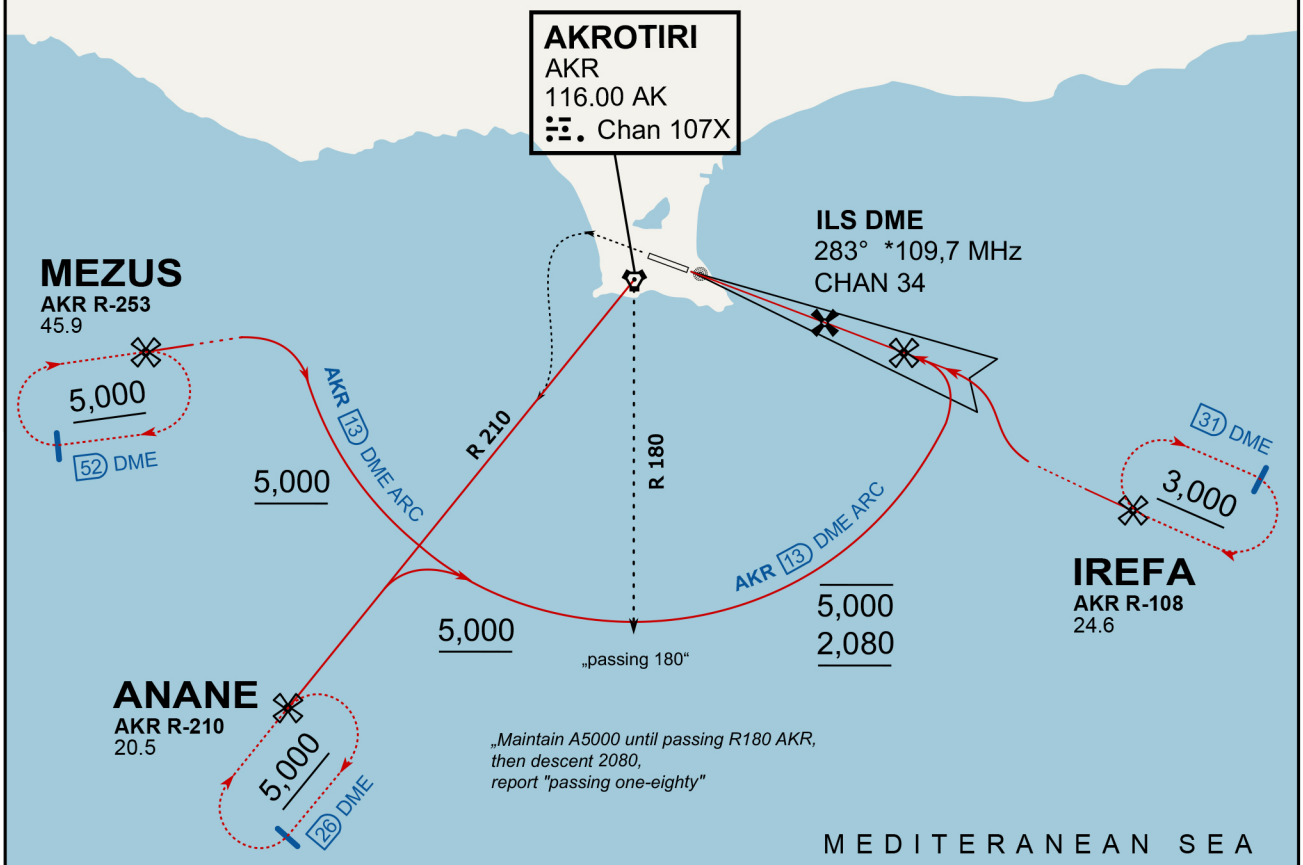
DEP RWY28 SIERRA: Fly straight ahead until coastline, then climbing left turn, intercept AKR R-180 to exit.

DEP ECHO: no exit.

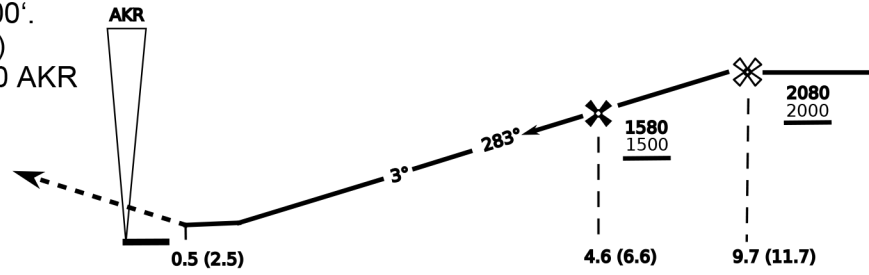
ATIS
288.200
AKROTIRI GROUND
122.100
AKROTIRI TOWER
339.850
APP (OVERLORD)
377.800

NOT FOR CIVIL USE

CAUTION: If unable to comply with restrictions advise ATC prior to departure.

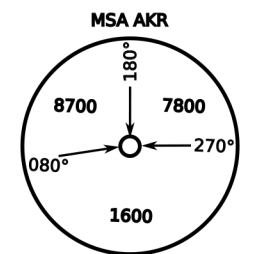


On Track 283° climb A 4.000'.
passing 2.080' (2.000' AAL)
turn left and intercept R-210 AKR
to ANANE.
Enter ANANE Holding.



THR Elev 74ft DME I-AK (DME AKR)

CAT	ILS/DME	LOC/DME	CIRCLE	GS (kts)				
				80	120	150	180	210
A	280 (200)	390 (320) 800m	680 (610) 1500m	FAF - MAPt (4.1NM) 3:06 2:03 1:38 1:22 1:10				
B	800m		680 (610) 1600m	RoD (fpm) 420 640 800 950 1110				
C	290 (210) 800m		780 (710) 2400m	- CIRCLING PROHIBITED N of Rwy - no AUTO coupled ILS approaches - when established on ILS contact Tower - Timing not Auth to define MAPt				
D	310 (230) 800m		780 (710) 3600m					
E	340 (260) 800m		1380 (1310) 3600m					



ATIS
377.475 (#8)

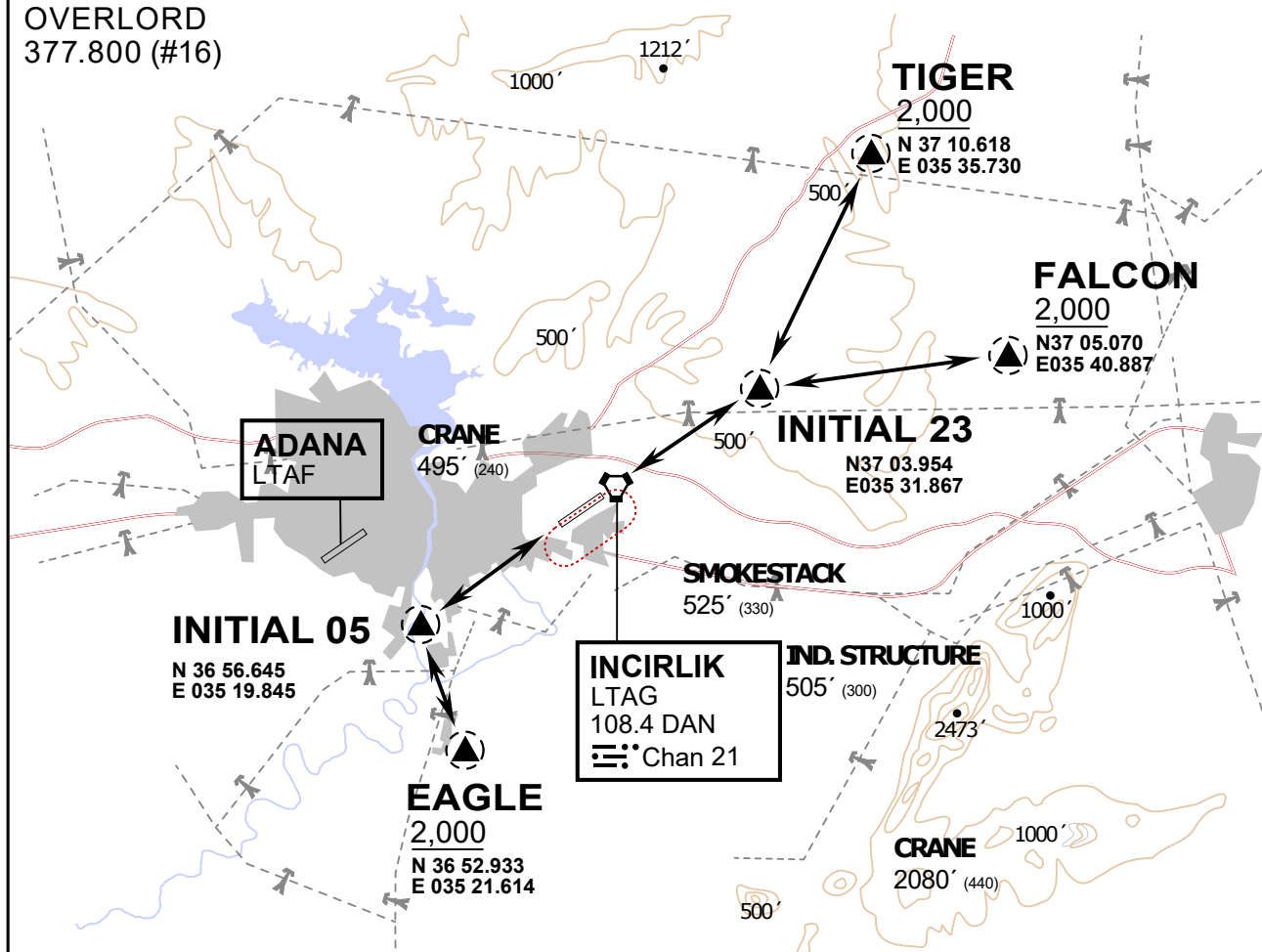
INCIRLIK GROUND
371.3500 (#7)

INCIRLIK TOWER
360.100 (#6)

OVERLORD
377.800 (#16)

NOT FOR CIVIL USE

CAUTION: If unable to comply
with restrictions advise ATC
prior to departure.



vJaBoG32 ETTR NAV CHART



ARR / DEP ROUTE DESCRIPTION

STRAIGHT-IN RWY 05 / 23

Pass entry EAGLE / TIGER / FALCON at 2000' and INITIAL at 1500'

OVERHEAD BREAK RWY 05 / 23

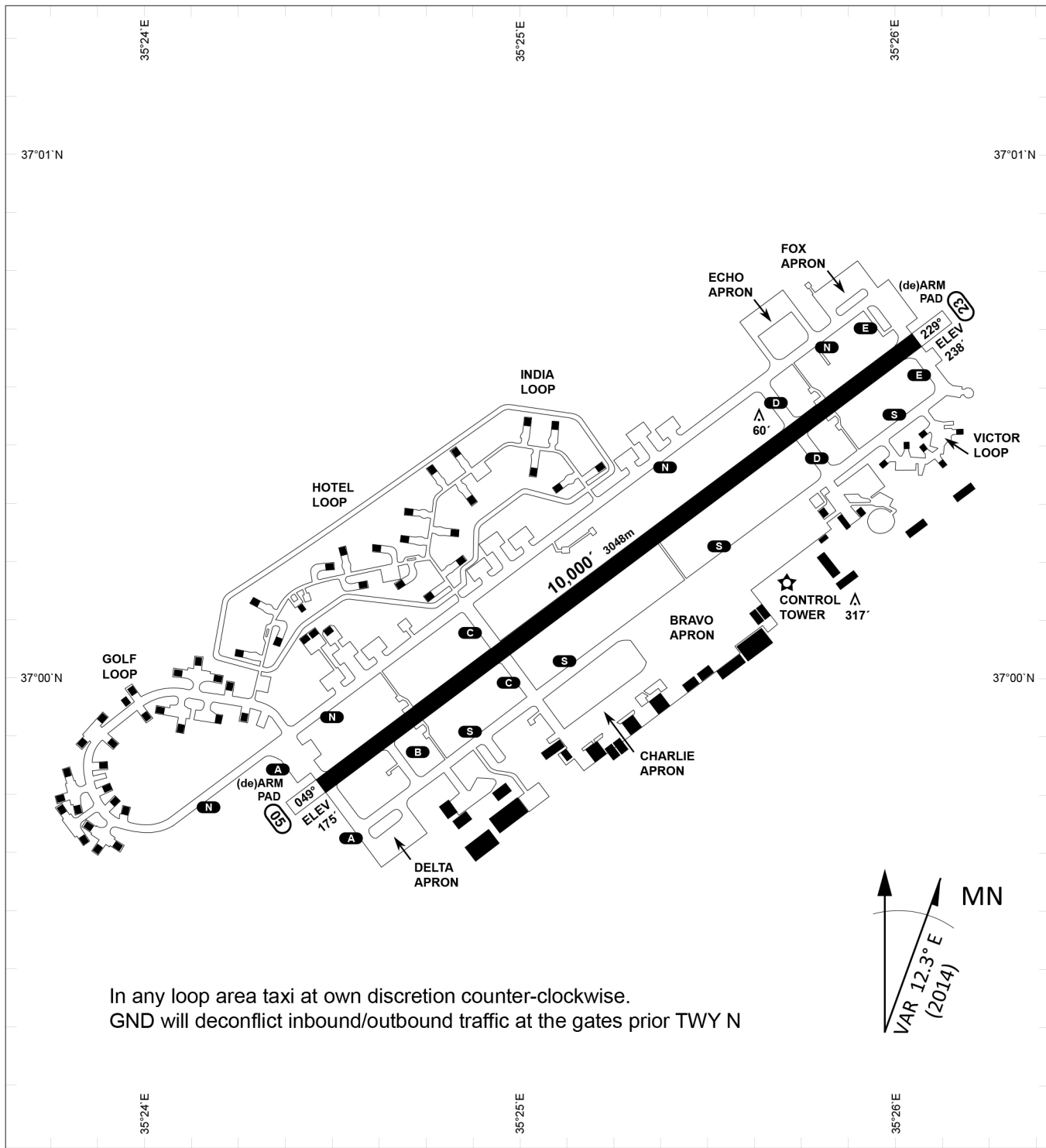
Pass entry EAGLE / TIGER / FALCON at 2500',
pass INITIAL at 2000' break to the south at 2000' pattern altitude.

HELICOPTER ROUTES

Pass entry EAGLE / TIGER / FALCON at 1000' or below, pass INITIAL at 1000' break to the south at 1000' pattern altitude.

DEPARTURE ALL DIRECTIONS

pass DER below 1500ft



In any loop area taxi at own discretion counter-clockwise.
 GND will deconflict inbound/outbound traffic at the gates prior TWY N

PAR	RWY	CAT	MINIMA	ARP	ELEV	Scale 1:35'500
	21L	A B D E	2057 - 0.8 200 (200-0.8/1.6) GS 3°	37°0'56.000" N 35°26'53.000" E	1857 [ft]	0 300 600 900 1200 1500 [m] 0 1000 2000 3000 4000 5000 [ft]
	3R	A B D E	2057 - 0.8 200 (200-0.8/1.6) GS 3°		566 [m]	
SRA	21R	A C D E	2257 - 1.2 350 (350-1.2/1.6)			
	3L	A C D E	2257 - 1.2 350 (350-1.2/1.6)			

RWY	TORA	TORA from D	TORA from B	COURSE	PSN THR	ALS
23	10,000 [ft] 3048 [m]	8,000 [ft] 2438 [m]		235°	37°00.611'N 035°26.368'E	⊙
05	10,000 [ft] 3048 [m]		9,000 [ft] 2743 [m]	055°	36°59.043'N 035°24.760'E	⊙

ATIS	INCIRLIK GROUND	INCIRLIK TOWER	CONTROL	TACAN	ILS RWY 05	ILS RWY 23
377.475	371.350 123.020	360.100 121.100	337.800	DAN21x	109.3MHz	111.7MHz