

**MISSION DATA CARD**

OPORD		Callsign		Mission		Date/Time		
3050/2024		Tiger 1		Training		012054JUL24		
Task							Freq	
AO							261.15	
Departure				Recovery				
CAT				CASE I				
#	Callsign		Pilot		IFF	TCN	LSR	NET
-1	Tiger 1-1		Kosmoss		1011	1Y	1551	
-2	Tiger 1-2		Phil		1012	64Y	1552	

**LOADOUT**

A/A						GUN	
A/G						CHF	
POD						FLR	
TKS						FUEL	

**TOLD**

	Takeoff	Target	Joker	Bingo	Land
FUEL	10803				

**AIRBASES**

	Name	TCN	ATIS	GND	TWR	RWY	Elev	ILS
Dep	CVN-73 USS G. Washington	55X		ICLS 12	304.0			
Arr	CVN-73 USS G. Washington	55X		ICLS 12	304.0			
Div	Akrotiri AFB	107X	288.2	240.1	339.85	28	62	109.7

**SUPPORT****Tanker**

Callsign	TCN	Freq	ALT	TAS
TEXACO 2	44Y	244.78	FL150	250
Pos	TEXACO2: (N3424 E03403)			

**OTHER FLIGHTS**

Callsign	Mission	Airframe	Freq	TCN	Grpld	Laser
Nazgul 6	Training	4x F-15E	262.45	1/64		156X
AO		Task				
Raptor 1	CAS	4x F-16C	134.0	1/64		162X
AO	Bomging Range	Task	NCR Strafe Training			

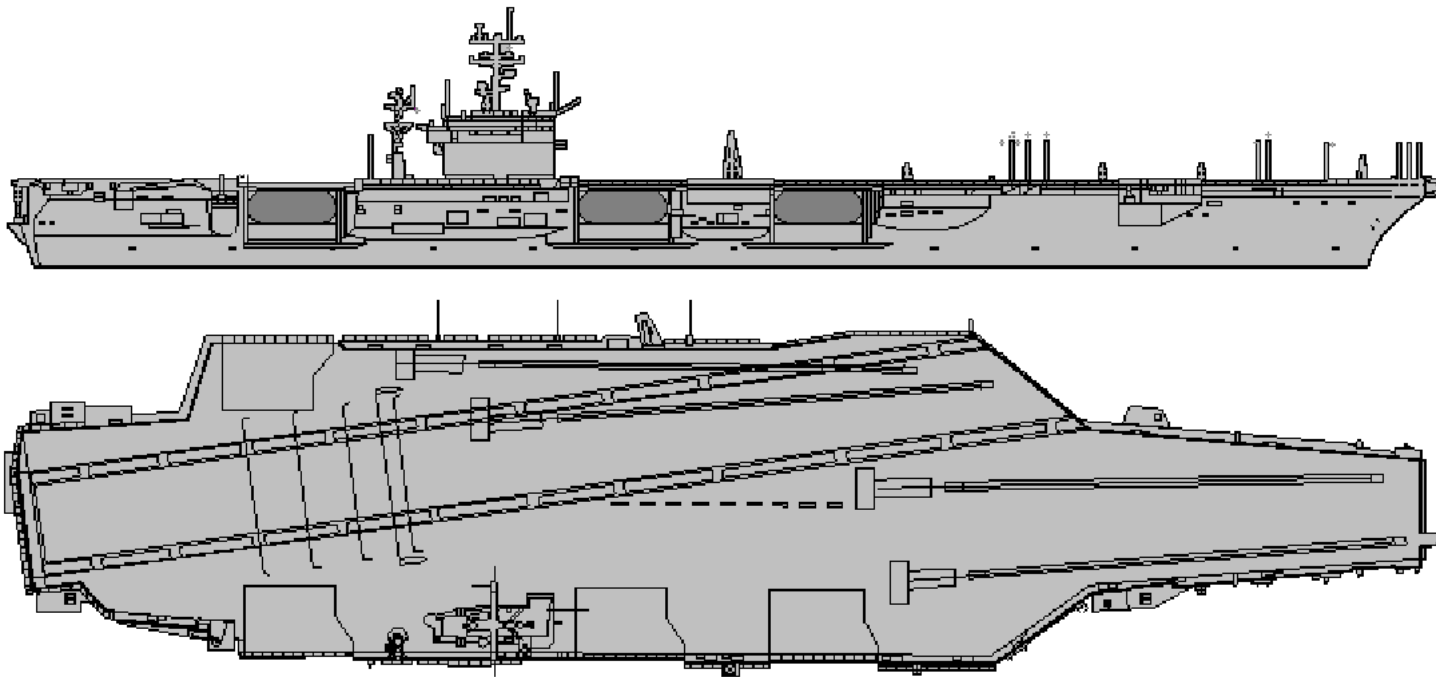
**RADIO CHANNELS**

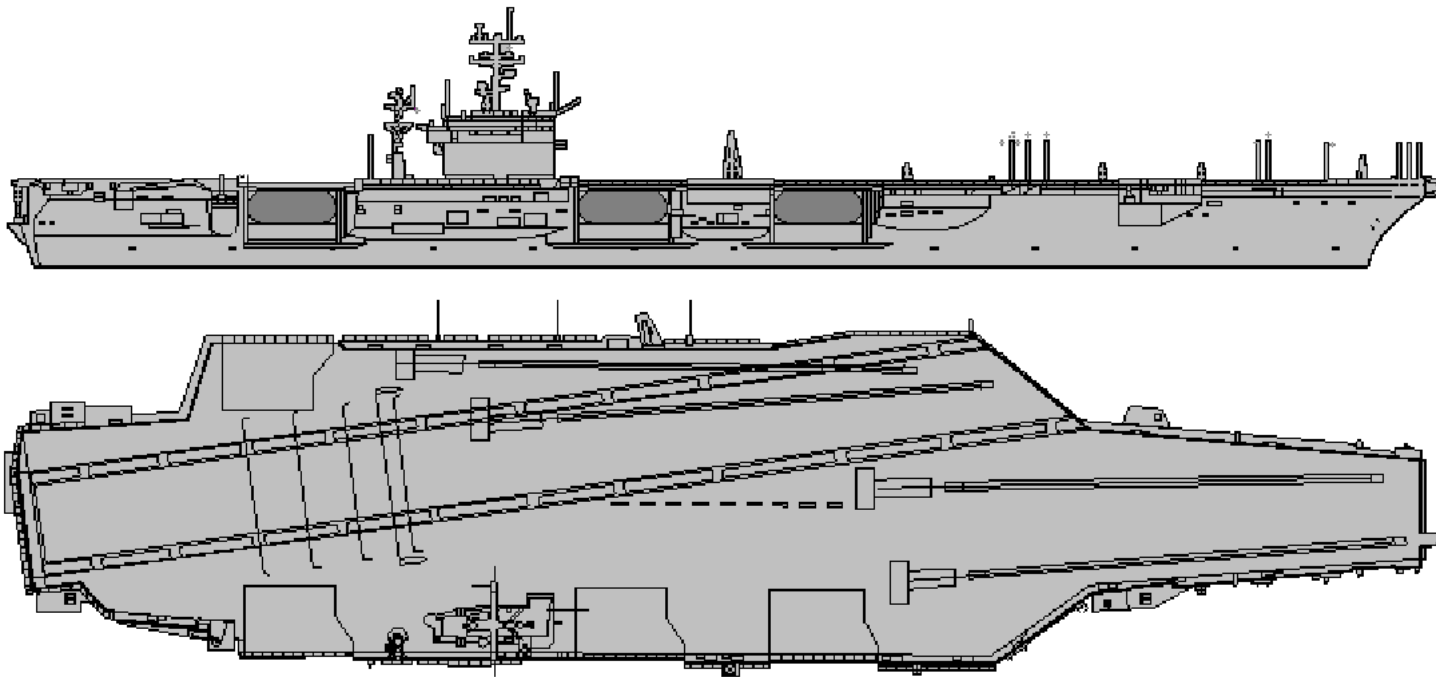
#	Freq	Name
1		Flight/Squadron specific
2	288.2	Akrotiri ATIS
3	240.1	Akrotiri Ground
4	339.85	Aktrotiri Tower
5	335.05	Akrotiri Approach
6	360.1	Incirlik Tower
7	371.35	Incirlik Ground
8	377.475	Incirlik ATIS
9		No Preset
10	127.3	Paphos ATIS
11	353.8	Paphos Tower
12	304.0	CVN-73 George Washington
13	302.0	LHA-1 Tarawa
14	259.0	CV-59 Forrestal
15		No Preset
16	377.8	Overlord
17	265.0	KC-135 Texaco-1 medium/slow
18	319.8	KC-135 Arco-1
19	360.8	KC-135MPRS Arco-2
20	256.0	S-3B Recovery Tanker

RAMROD										
0	1	2	3	4	5	6	7	8	9	
M	A	L	N	O	U	R	I	S	H	
KTC 1400 C										
	0	1	2	3	4	5	6	7	8	9
A	KLOU	TGS	VBW	CY	PI	QHR	XJ	NM	DA	EF
B	AJTB	PYI	VXQ	HO	DC	FUG	RE	MS	WN	KL
C	WPLE	VGN	IDK	SF	OH	AJR	UT	XB	QM	CY
D	NQMP	KOT	CVH	XJ	IW	UGB	EF	LR	AD	YS
E	XYLE	HJK	SUR	WC	TQ	PNM	DF	VI	OG	AB
F	BEVW	KCD	HGS	XQ	PU	JLT	ON	YR	FA	MI
G	NOES	BVA	CFP	TU	YR	WGQ	KM	XJ	IH	DL
H	QYIV	PSL	RCD	UF	BJ	GNX	AH	OK	WE	TM
I	IPJD	NHG	ATY	EB	UX	QSC	VM	LK	WO	FR
J	EYSL	WQF	KUH	TD	OM	XNG	BC	RI	VJ	PA
K	DVBK	CGM	XPF	NU	AW	SHT	IY	RL	EQ	JO
L	POFX	DUY	BWV	RM	NT	SCH	KI	EQ	GJ	AL
M	LUYM	KQG	NEW	BC	AT	PRO	FV	JH	SD	XI
N	PSLM	OYR	FHG	NV	CJ	DQI	BT	KE	AU	XW
O	PNYT	CEQ	LRH	UW	BD	OKI	VS	AX	MJ	FG
P	MGEN	IJA	QDO	WH	RC	UTK	FX	LS	BV	PY
Q	LDJV	OWP	NGF	AE	HU	SKQ	CX	YM	RB	IT
R	SJKA	PTQ	DEM	IO	UF	GNX	HL	VC	YB	RW
S	AGTQ	SOX	LKN	WI	HC	YRD	UE	FP	JV	BM
T	SCFY	OJQ	RXE	IG	WB	HVU	PN	DA	MT	KL
U	FGIY	TCE	JKN	XW	VL	MAS	DQ	HB	PU	RO
V	GVTS	HNP	KAL	BO	QD	WUC	YE	RM	IF	JX
W	WRIS	UEG	HJN	KX	LD	VFM	OQ	PB	YC	TA
X	BUCI	LJD	PAQ	GS	MR	XYV	FN	KE	OH	WT
Y	TILM	YVX	CJA	GQ	WF	KOP	EN	BS	DU	RH

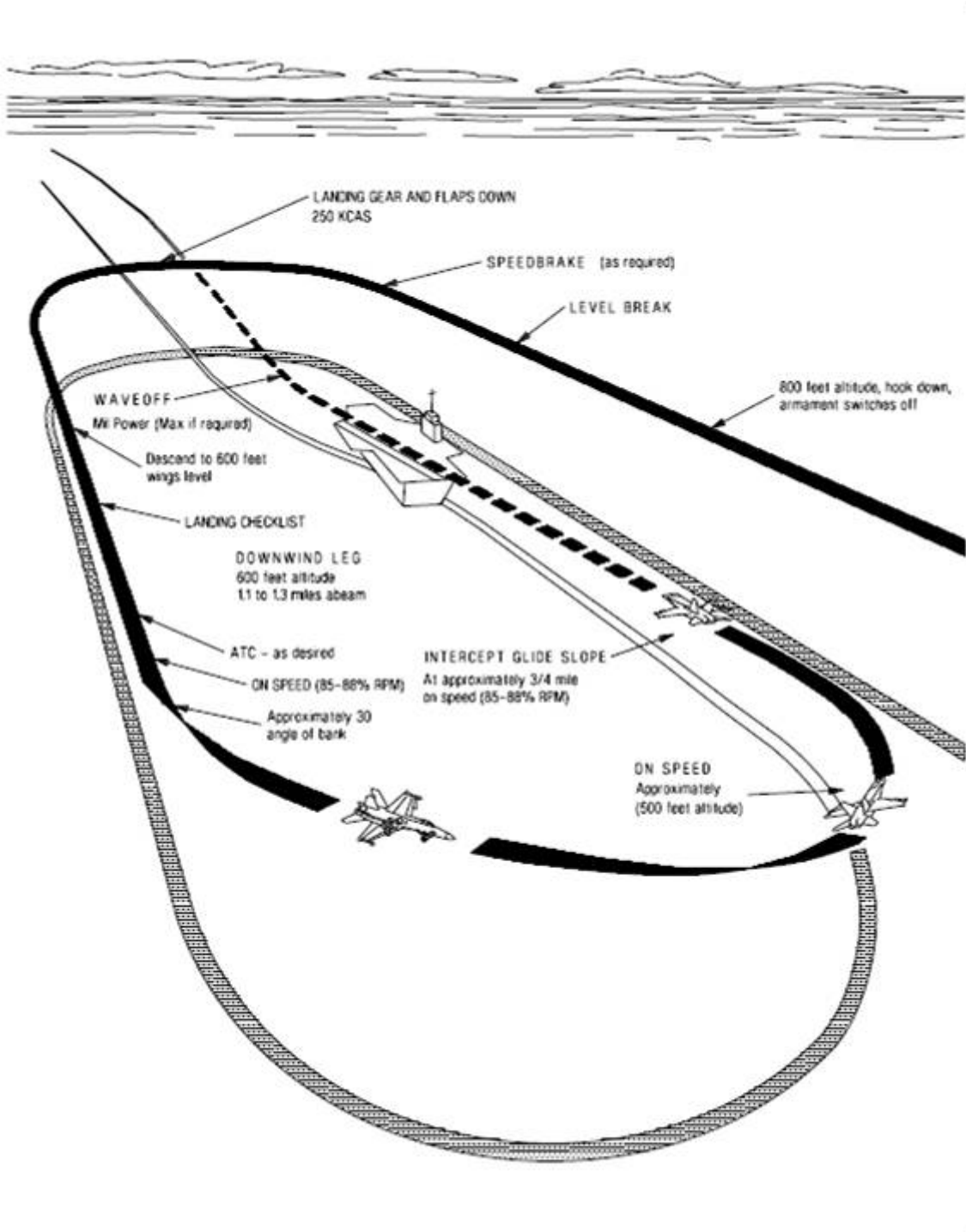
**NAVAIDS**

<b>Id</b>	<b>Name</b>	<b>Channel</b>	<b>Position</b>	<b>Elevation</b>
DAN	Incirlik	21	N37 00.950 E035 26.883	243
AKR	Akrotiri	107	N34 34.765 E032 57.769	147
PHA	Paphos	79	N34 42.997 E032 28.963	35
RMD	Ramat David	84	N32 39.892 E035 11.265	136
OS66	Kuweires Military Aviation Institute	36	N36 11.362 E037 34.226	1200





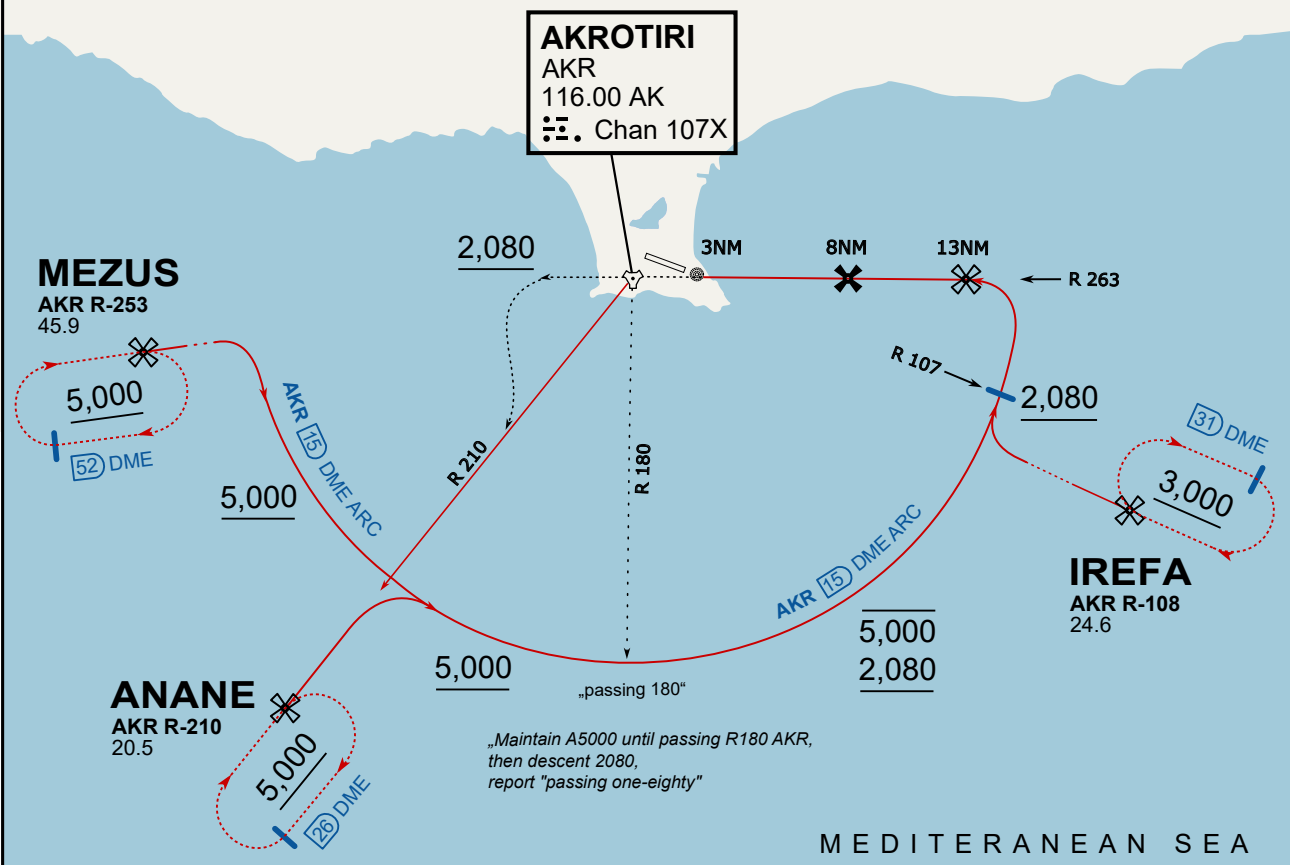




**ATIS**  
 288.200  
**AKROTIRI GROUND**  
 122.100  
**AKROTIRI TOWER**  
 339.850  
**APP (OVERLORD)**  
 377.800

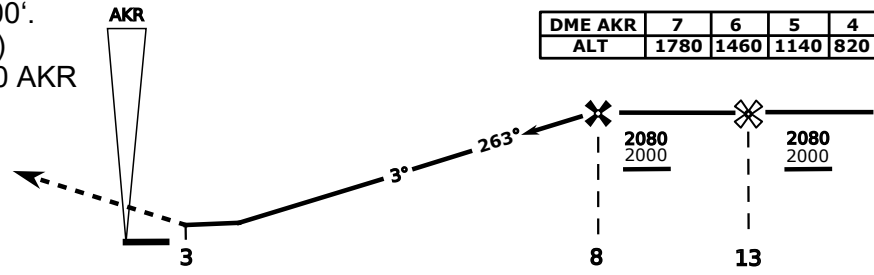
**NOT FOR CIVIL USE**

CAUTION: If unable to comply with restrictions advise ATC prior to departure.



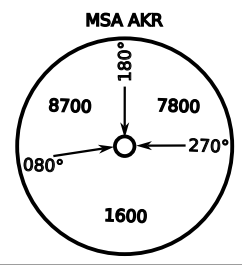
vJaBoG32 ETRR NAV CHART

On Track 263° climb A 4.000'.  
 passing 2.080' (2.000' AAL)  
 turn left and intercept R-210 AKR  
 to ANANE.  
 Enter ANANE Holding.

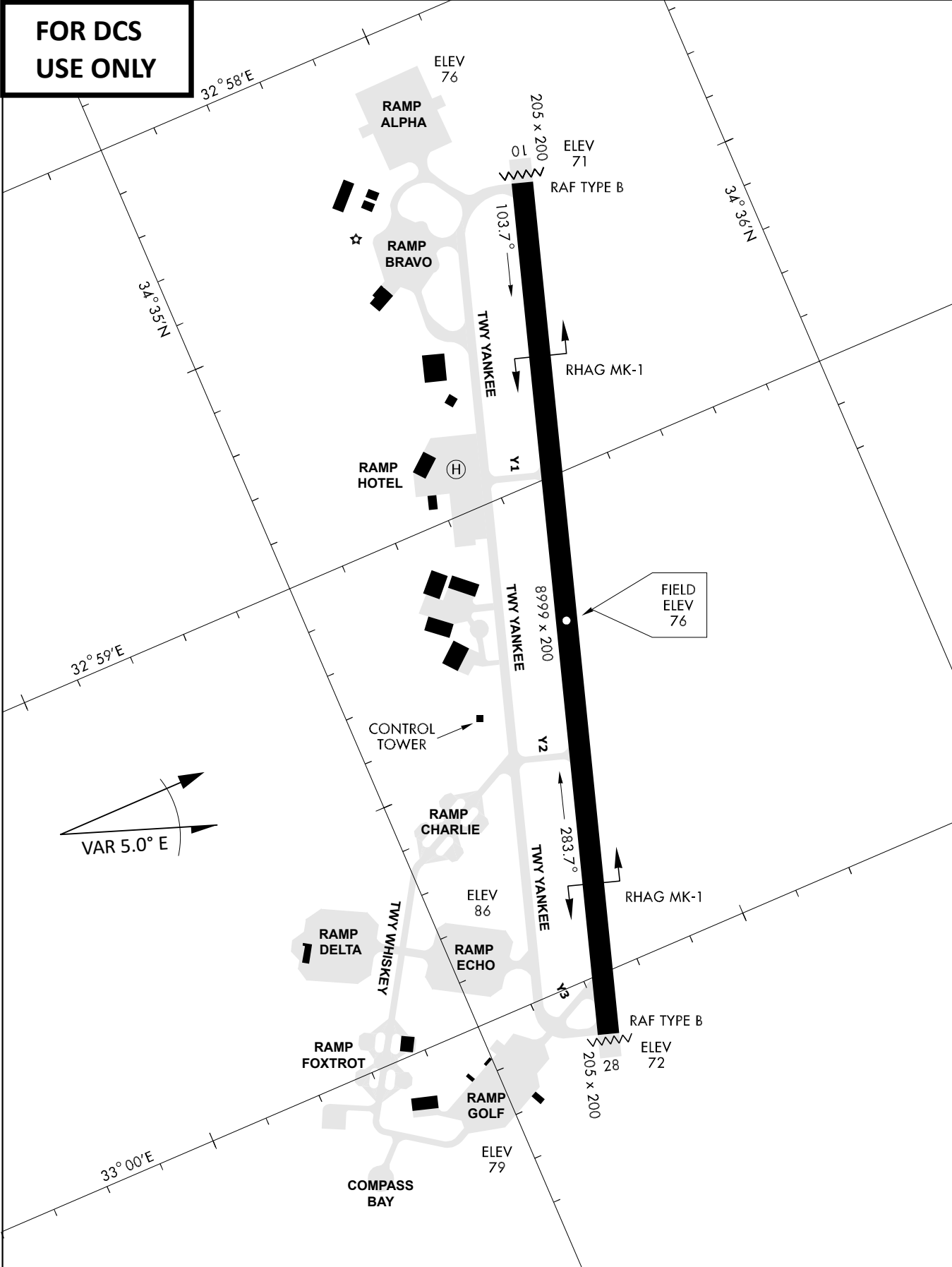


DME AKR	7	6	5	4
ALT	1780	1460	1140	820

CAT	TAC	CIRCLE	GS (kts)	80	120	150	180	210
A	500(430)	680 (610) 2000m	FAF - MAPt (4.1NM)	3:06	2:03	1:38	1:22	1:10
B	1300m		RoD (fpm)	420	640	800	950	1110
C	780 (710) 2600m	N/A	780 (710) 3300m	- CIRCLING PROHIBITED N of Rwy - final track is offset 20° right of RCL and Intcp 1.1NM before THR - when established on final contact tower - Timing not Auth to define MAPt				
D			780 (710) 3600m					
E			1380 (1310) 5000m					



**FOR DCS  
 USE ONLY**



ATIS	AKROTIRI GND	AKROTIRI TWR	OVERLORD CONTROL	TACAN	FIELD ELEVATION
288.20 MHz	240.10   122.10	339.85   130.075	377.8	AKR 107X	<b>75 [ft] 23 [m]</b>