

MISSION DATA CARD

OPORD		Callsign		Mission		Date/Time		
3048/2024		Nazgul 6		Training		012000JUL24		
Task						Freq		
AO						262.45		
Departure				Recovery				
RWY28 VFR				ILS 28				
#	Callsign		Pilot		IFF	TCN	LSR	NET
-1	Nazgul 6-1		Striver/Uta		1161	1Y	1561	
-2	Nazgul 6-2		Razorback/Lempo		1162	64Y	1562	

LOADOUT

A/A	2xA120C, 2xA9M				GUN	100% SAPHEI	
A/G					CHF	240	
POD	TGT, NAV				FLR	0	
TKS					FUEL	100%	

TOLD

	Takeoff	Target	Joker	Bingo	Land
FUEL	22588				

AIRBASES

	Name	TCN	ATIS	GND	TWR	RWY	Elev	ILS
Dep	Akrotiri AFB	107X	288.2	240.1	339.85	28	62	109.7
Arr	Akrotiri AFB	107X	288.2	240.1	339.85	28	62	109.7
Div	Akrotiri AFB	107X	288.2	240.1	339.85	28	62	109.7

FLIGHTPLAN

#	Name	Navaid/Coords/DME	ALT	TOT
1	LAKE	N34 45.150 E032 55.400		
2	ECHO	N34 42.600 E033 10		

OTHER FLIGHTS

Callsign	Mission	Airframe	Freq	TCN	Grpld	Laser
Raptor 1	CAS	4x F-16C	134.0	1/64		162X
	AO	Bomging Range	Task	NCR Strafe Training		
Tiger 1	Training	2x F/A-18C	261.15	1/64		155X
	AO		Task			

RADIO CHANNELS

#	Freq	Name
1		Flight/Squadron specific
2	288.2	Akrotiri ATIS
3	240.1	Akrotiri Ground
4	339.85	Aktrotiri Tower
5	335.05	Akrotiri Approach
6	360.1	Incirlik Tower
7	371.35	Incirlik Ground
8	377.475	Incirlik ATIS
9		No Preset
10	127.3	Paphos ATIS
11	353.8	Paphos Tower
12	304.0	CVN-73 George Washington
13	302.0	LHA-1 Tarawa
14	259.0	CV-59 Forrestal
15		No Preset
16	377.8	Overlord
17	265.0	KC-135 Texaco-1 medium/slow
18	319.8	KC-135 Arco-1
19	360.8	KC-135MPRS Arco-2
20	256.0	S-3B Recovery Tanker

RAMROD										
0	1	2	3	4	5	6	7	8	9	
M	A	L	N	O	U	R	I	S	H	
KTC 1400 C										
	0	1	2	3	4	5	6	7	8	9
A	KLOU	TGS	VBW	CY	PI	QHR	XJ	NM	DA	EF
B	AJTB	PYI	VXQ	HO	DC	FUG	RE	MS	WN	KL
C	WPLE	VGN	IDK	SF	OH	AJR	UT	XB	QM	CY
D	NQMP	KOT	CVH	XJ	IW	UGB	EF	LR	AD	YS
E	XYLE	HJK	SUR	WC	TQ	PNM	DF	VI	OG	AB
F	BEVW	KCD	HGS	XQ	PU	JLT	ON	YR	FA	MI
G	NOES	BVA	CFP	TU	YR	WGQ	KM	XJ	IH	DL
H	QYIV	PSL	RCD	UF	BJ	GNX	AH	OK	WE	TM
I	IPJD	NHG	ATY	EB	UX	QSC	VM	LK	WO	FR
J	EYSL	WQF	KUH	TD	OM	XNG	BC	RI	VJ	PA
K	DVBK	CGM	XPF	NU	AW	SHT	IY	RL	EQ	JO
L	POFX	DUY	BWV	RM	NT	SCH	KI	EQ	GJ	AL
M	LUYM	KQG	NEW	BC	AT	PRO	FV	JH	SD	XI
N	PSLM	OYR	FHG	NV	CJ	DQI	BT	KE	AU	XW
O	PNYT	CEQ	LRH	UW	BD	OKI	VS	AX	MJ	FG
P	MGEN	IJA	QDO	WH	RC	UTK	FX	LS	BV	PY
Q	LDJV	OWP	NGF	AE	HU	SKQ	CX	YM	RB	IT
R	SJKA	PTQ	DEM	IO	UF	GNX	HL	VC	YB	RW
S	AGTQ	SOX	LKN	WI	HC	YRD	UE	FP	JV	BM
T	SCFY	OJQ	RXE	IG	WB	HVU	PN	DA	MT	KL
U	FGIY	TCE	JKN	XW	VL	MAS	DQ	HB	PU	RO
V	GVTS	HNP	KAL	BO	QD	WUC	YE	RM	IF	JX
W	WRIS	UEG	HJN	KX	LD	VFM	OQ	PB	YC	TA
X	BUCI	LJD	PAQ	GS	MR	XYV	FN	KE	OH	WT
Y	TILM	YVX	CJA	GQ	WF	KOP	EN	BS	DU	RH

NAVAIDS

Id	Name	Channel	Position	Elevation
DAN	Incirlik	21	N37 00.950 E035 26.883	243
AKR	Akrotiri	107	N34 34.765 E032 57.769	147
PHA	Paphos	79	N34 42.997 E032 28.963	35
RMD	Ramat David	84	N32 39.892 E035 11.265	136
OS66	Kuweires Military Aviation Institute	36	N36 11.362 E037 34.226	1200

**FOR DCS
 USE ONLY**



ATIS	AKROTIRI GND	AKROTIRI TWR	OVERLORD CONTROL	TACAN	FIELD ELEVATION
288.20 MHz	240.10 122.10	339.85 130.075	377.8	AKR 107X	75 [ft] 23 [m]

ATIS
288.20
AKROTIRI GROUND
240.10
AKROTIRI TOWER
339.85
OVERLORD
377.80

NOT FOR CIVIL USE

CAUTION: If unable to comply with restrictions advise ATC prior to departure.



ARR / DEP ROUTE DESCRIPTION

STRAIGHT-IN RWY28

Pass ENTRY at 5.000' MSL or below, pass INITIAL at 1.500' MSL or below.

OVERHEAD BREAK RWY28

Pass ENTRY at 5.000' MSL or below, pass INITIAL at 2.000' MSL, break to the south.

DEPARTURE GENERAL

Pass Departure end of runway at 1.000' or below.

DEP RWY28 PAPA: Fly straight ahead to exit.

DEP RWY28 LAKE: Fly straight ahead until coast, than right turn direct exit.

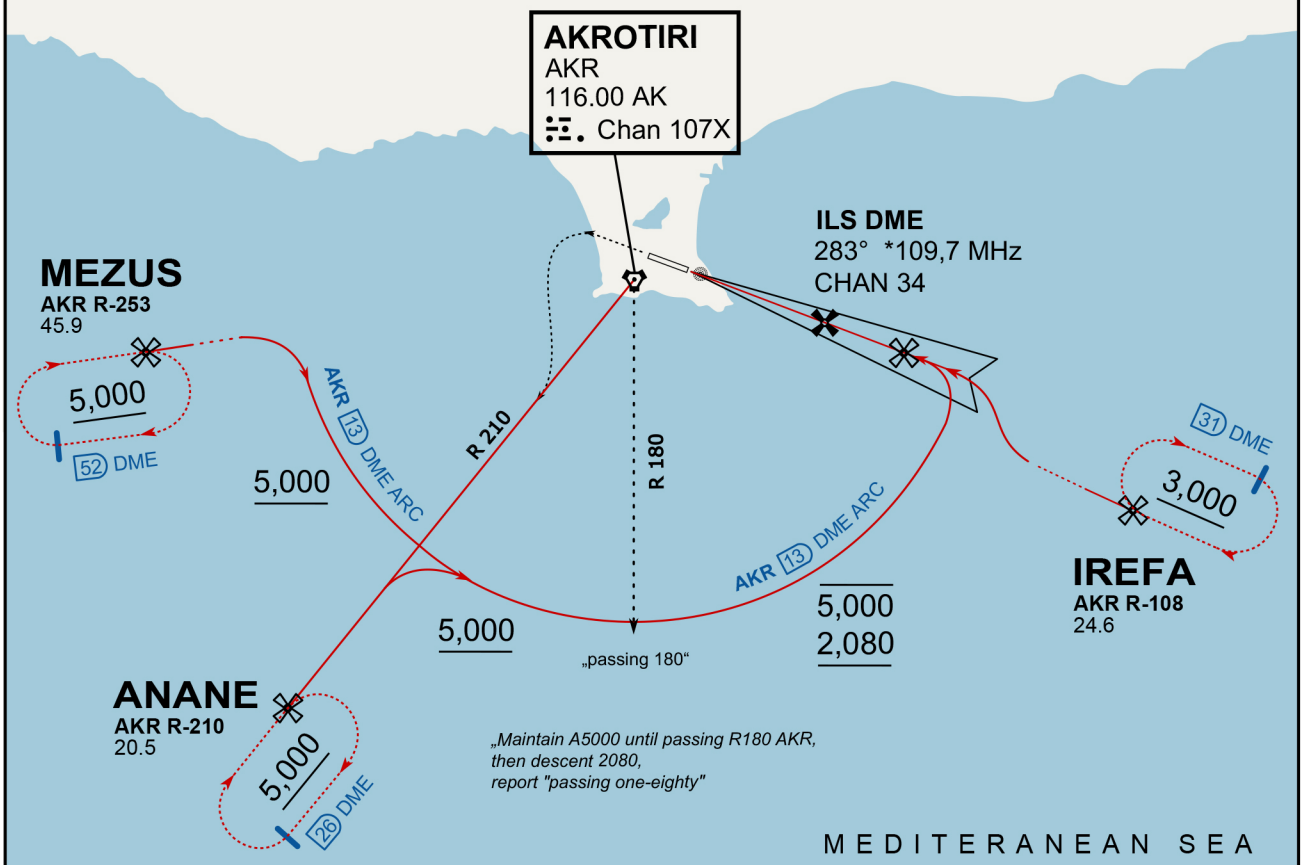
DEP RWY28 SIERRA: Fly straight ahead until coastline, then climbing left turn, intercept AKR R-180 to exit.

DEP ECHO: no exit.

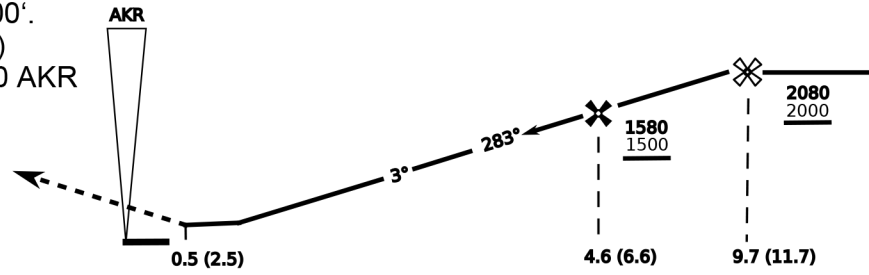
ATIS
288.200
AKROTIRI GROUND
122.100
AKROTIRI TOWER
339.850
APP (OVERLORD)
377.800

NOT FOR CIVIL USE

CAUTION: If unable to comply with restrictions advise ATC prior to departure.

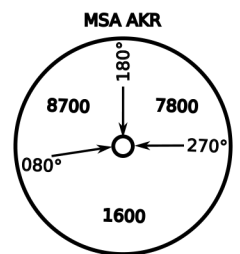


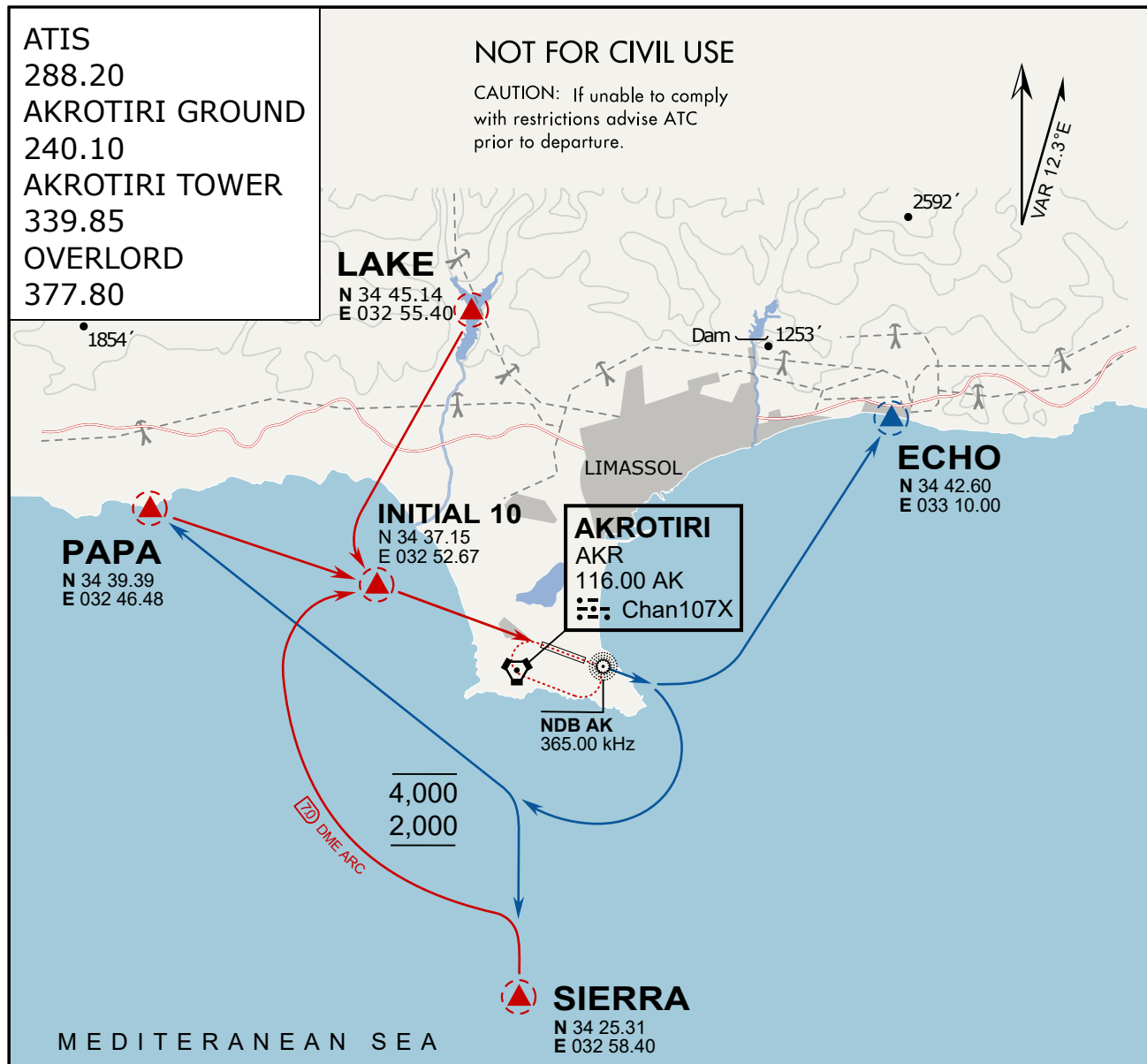
On Track 283° climb A 4.000'.
passing 2.080' (2.000' AAL)
turn left and intercept R-210 AKR
to ANANE.
Enter ANANE Holding.



THR Elev 74ft DME I-AK (DME AKR)

CAT	ILS/DME	LOC/DME	CIRCLE	GS (kts)				
				80	120	150	180	210
A	280 (200)	390 (320) 800m	680 (610) 1500m	FAF - MAPt (4.1NM) 3:06 2:03 1:38 1:22 1:10				
B	800m		680 (610) 1600m	RoD (fpm) 420 640 800 950 1110				
C	290 (210) 800m		780 (710) 2400m	- CIRCLING PROHIBITED N of Rwy - no AUTO coupled ILS approaches - when established on ILS contact Tower - Timing not Auth to define MAPt				
D	310 (230) 800m		780 (710) 3600m					
E	340 (260) 800m		1380 (1310) 3600m					





ARR / DEP ROUTE DESCRIPTION

ARRIVAL GENERAL

Pass Entry at 5.000' or below. Overhead Brake RWY 10: pass INITIAL 10 at 2.000' MSL.
Straight-in RWY 10 : pass INITIAL 1.500' or below.

ARR RWY10 PAPA / LAKE: Direct initial.

ARR RWY10 SIERRA: Intercept ARC 7 of AKR to INITIAL 10.

ARR ECHO: no ENTRY.

DEPARTURE GENERAL

Pass Departure end of runway at 1.000' AGL or below. Keep RWY heading until coastline.

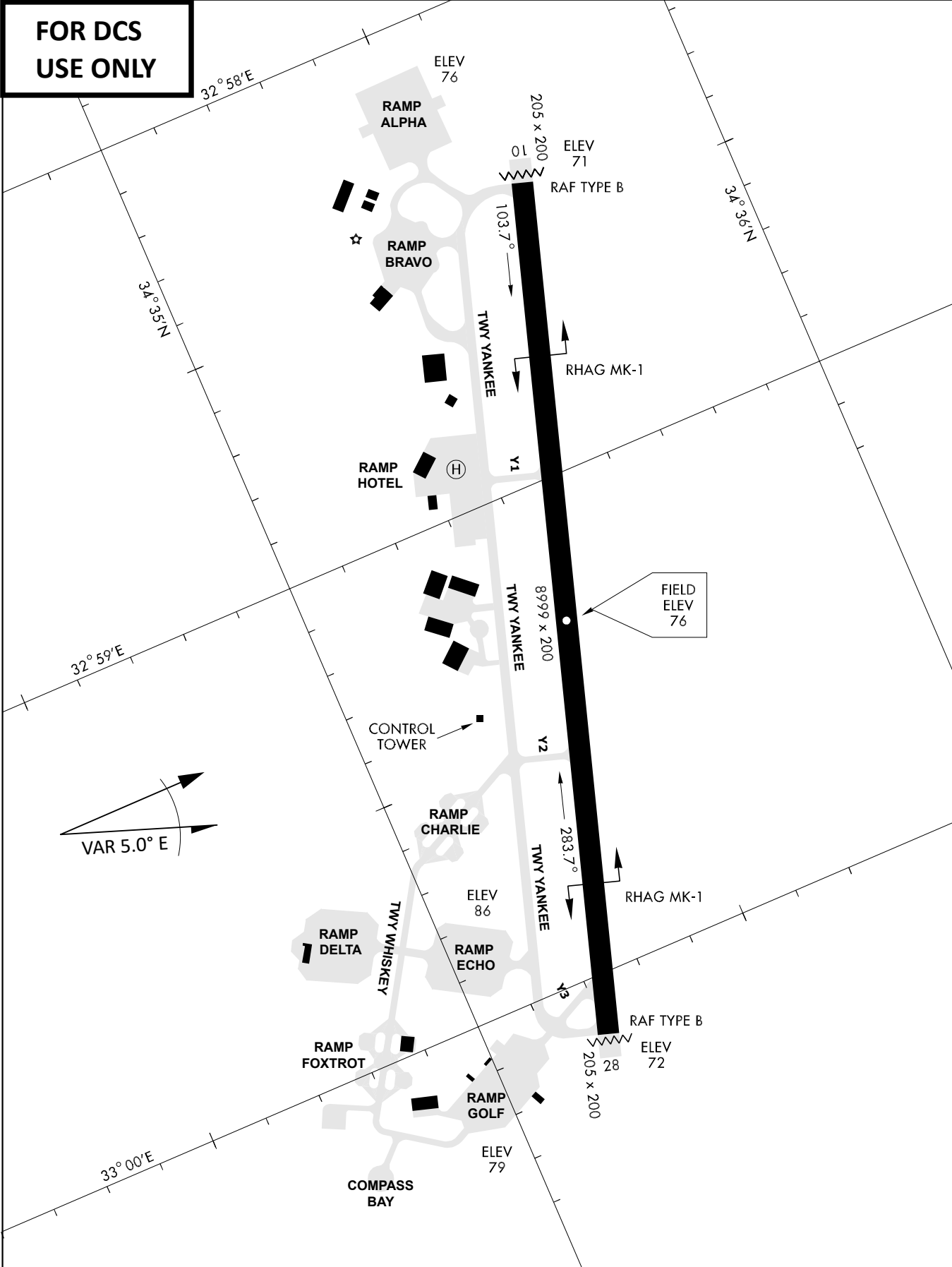
DEP RWY10 ECHO: Direct EXIT.

DEP RWY10 SIERRA: Climbing right turn, intercept R180 AKR to Sierra.

DEP RWY10 PAPA: Climbing right turn until R180 AKR, then direct Papa

DEP LAKE: no EXIT.

**FOR DCS
 USE ONLY**



ATIS	AKROTIRI GND	AKROTIRI TWR	OVERLORD CONTROL	TACAN	FIELD ELEVATION
288.20 MHz	240.10 122.10	339.85 130.075	377.8	AKR 107X	75 [ft] 23 [m]