

MISSION DATA CARD

OPORD		Callsign		Mission		Date/Time	
3047/2024		Tiger 1		Training		301440JUN24	
Task							Freq
AO							261.15
Departure				Recovery			
CAT				CASE I			
#	Callsign	Pilot		IFF	TCN	LSR	NET
-1	Tiger 1-1	Kosmoss		1011	1Y	1551	
-2	Tiger 1-2	Marsy		1012	64Y	1552	

LOADOUT

A/A						GUN	
A/G						CHF	
POD						FLR	
TKS						FUEL	

TOLD

	Takeoff	Target	Joker	Bingo	Land
FUEL	10803				

AIRBASES

	Name	TCN	ATIS	GND	TWR	RWY	Elev	ILS
Dep	CVN-73 USS G. Washington	55X		ICLS 12	304.0			
Arr	CVN-73 USS G. Washington	55X		ICLS 12	304.0			
Div	Akrotiri AFB	107X	288.2	240.1	339.85	28	62	109.7

OTHER FLIGHTS

Callsign	Mission	Airframe	Freq	TCN	Grpld	Laser
Nazgul 6	Training	4x F-15E	262.45	1/64		156X
AO		Task				
Monster 2	Training	4x A-10C	132.15	1/64	25	161X
AO		Task	Mission Training			

RADIO CHANNELS

#	Freq	Name
1		Flight/Squadron specific
2	288.2	Akrotiri ATIS
3	240.1	Akrotiri Ground
4	339.85	Aktrotiri Tower
5	335.05	Akrotiri Approach
6	360.1	Incirlik Tower
7	371.35	Incirlik Ground
8	377.475	Incirlik ATIS
9		No Preset
10	127.3	Paphos ATIS
11	353.8	Paphos Tower
12	304.0	CVN-73 George Washington
13	302.0	LHA-1 Tarawa
14	259.0	CV-59 Forrestal
15		No Preset
16	377.8	Overlord
17	265.0	KC-135 Texaco-1 medium/slow
18	319.8	KC-135 Arco-1
19	360.8	KC-135MPRS Arco-2
20	256.0	S-3B Recovery Tanker

RAMROD

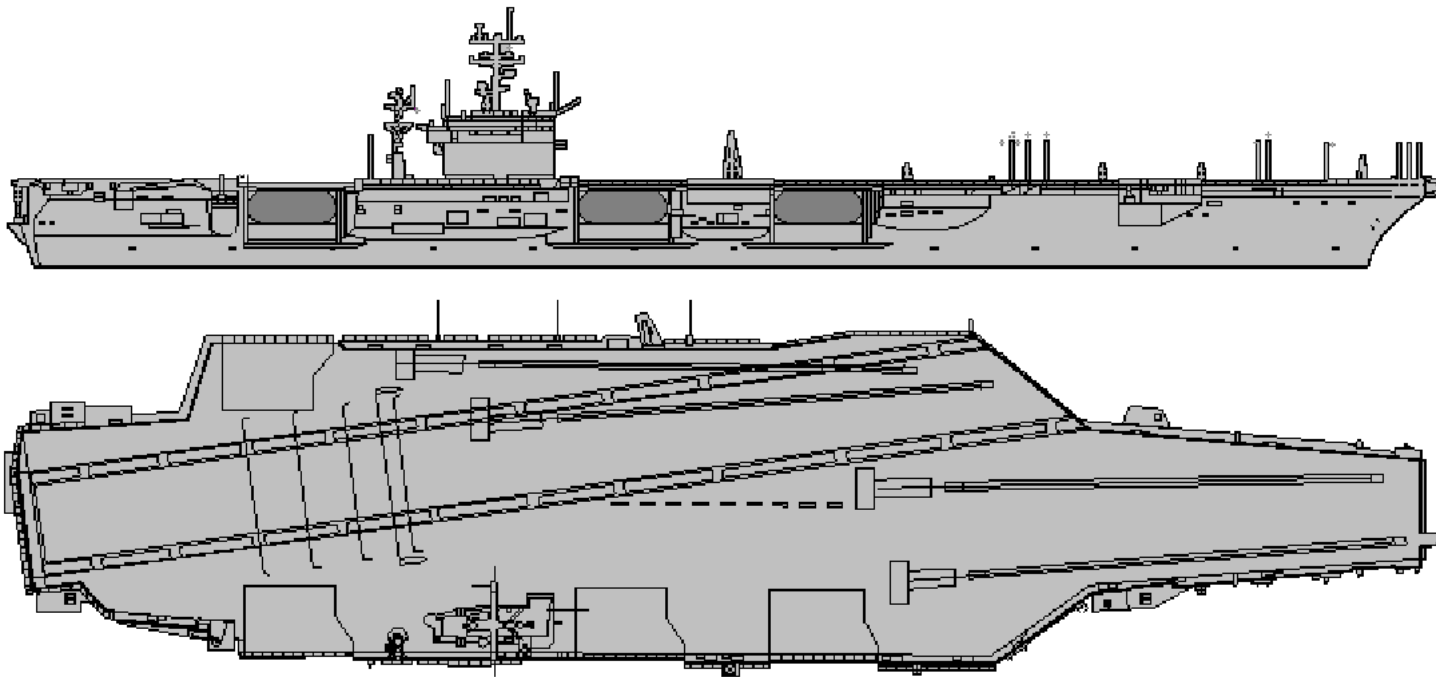
0	1	2	3	4	5	6	7	8	9
B	L	A	C	K	T	H	O	R	N

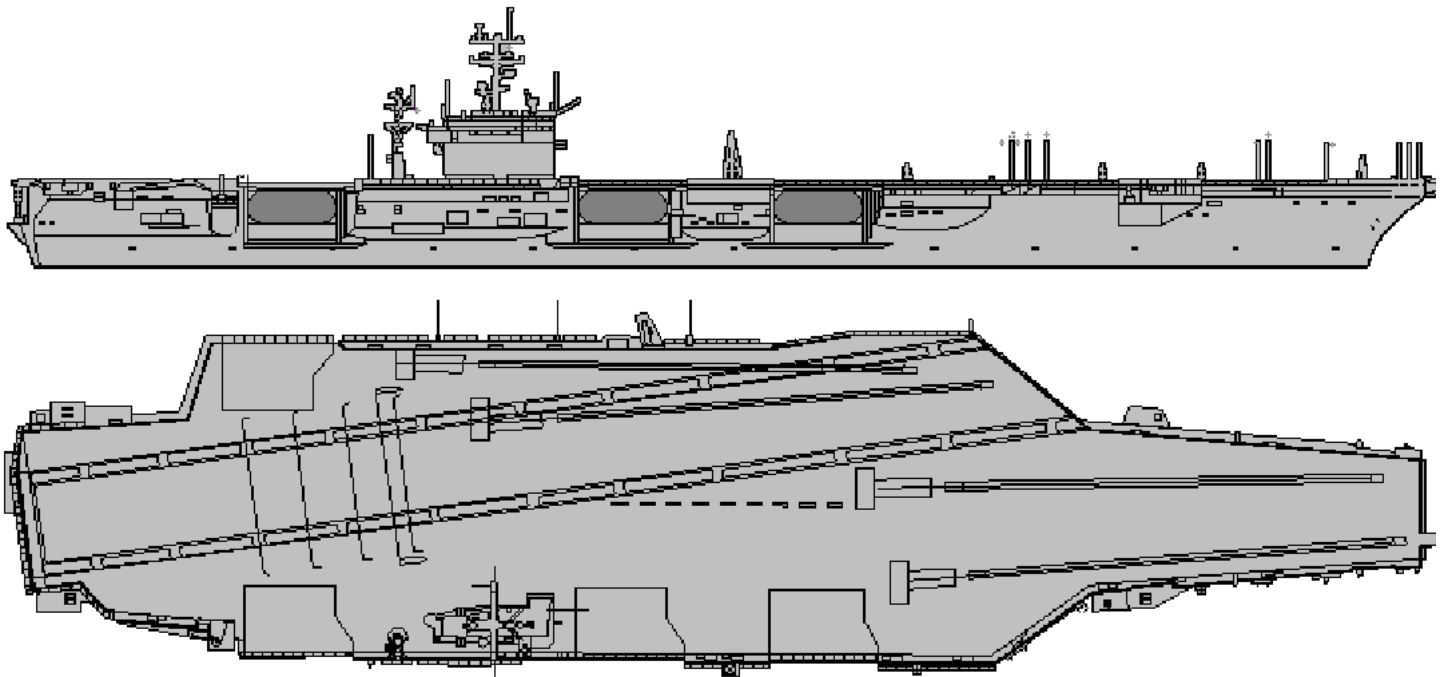
KTC 1400 C

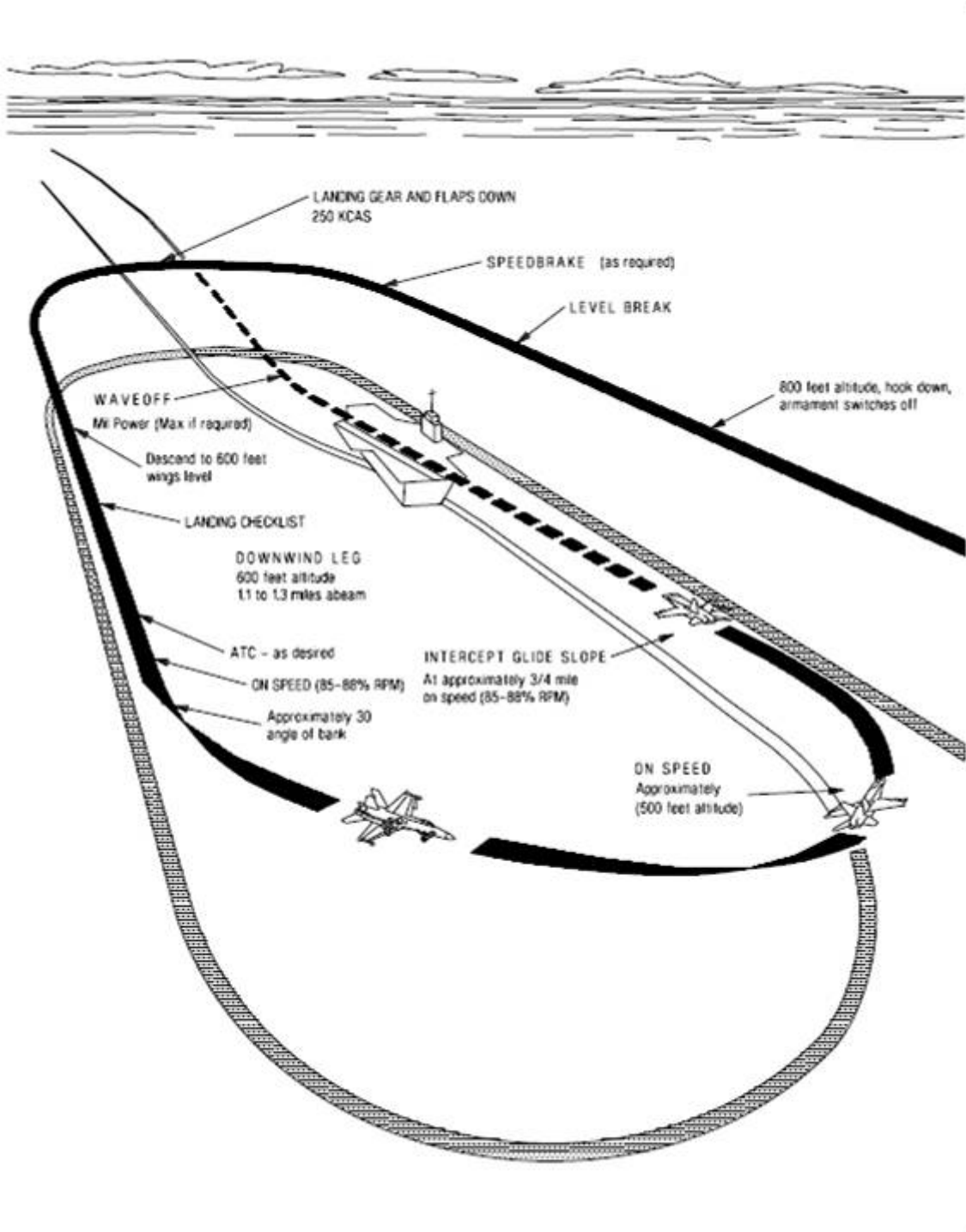
	0	1	2	3	4	5	6	7	8	9
A	KIOP	NLD	BCW	AM	XQ	GTH	VR	UJ	EY	SF
B	VYRE	LXS	OMC	UB	NF	GJI	KP	WA	DH	QT
C	IOME	XYC	HPA	JQ	UG	RVB	FS	ND	TL	WK
D	MVAQ	YTB	XHG	FP	DU	ICL	EO	JK	SW	NR
E	UQMA	VLF	IKB	EG	WC	YPT	JX	RN	DH	OS
F	DQAG	ISU	FJK	XO	WV	TCR	LP	MN	YH	EB
G	LAXE	JNV	DWU	IK	OQ	TRP	CH	GS	MB	FY
H	CUSD	MPR	NIK	XY	FE	WAJ	HL	GV	QB	OT
I	MORS	LJK	HCB	XD	EY	IGV	WU	QA	TP	FN
J	OLKI	CAH	SXJ	YT	GF	DRU	QV	MP	EW	BN
K	NHUC	TGX	BRO	IE	QM	LSY	JA	PD	VW	FK
L	AUCY	LWF	PJO	TX	KG	QNI	BS	RD	MV	EH
M	WTKM	LAX	EDP	BY	CS	ONV	IJ	FR	GH	UQ
N	IWBY	TOG	XND	LP	JR	KAU	EV	MC	QS	HF
O	UHCX	FMG	VWB	SN	DQ	POK	TL	YE	IA	JR
P	VPIO	MAJ	WQT	GH	RF	CYU	DX	NE	SK	LB
Q	HAJL	XBY	FEU	CO	PN	SKW	TG	DR	MQ	VI
R	PKHJ	WVA	STU	CG	OD	YFB	MI	LQ	XN	ER
S	IVQL	RSD	OGB	XJ	TA	UEH	NC	YW	FP	KM
T	LPOA	VKU	RWS	GC	EX	BYI	TJ	QD	NH	MF
U	YMHJ	WDB	OFA	GI	PT	EVL	QK	XN	UR	SC
V	RNMT	PVL	UCD	QO	GW	YKF	XE	BI	JH	AS
W	MKNJ	HSV	OYX	CU	DL	IFW	PA	BT	RE	GQ
X	OTYU	AQD	LRP	MI	SG	CHB	VK	WJ	FN	XE
Y	HSKW	URA	QCO	MX	JE	FPG	VB	IN	DT	YL

NAVAIDS

Id	Name	Channel	Position	Elevation
DAN	Incirlik	21	N37 00.950 E035 26.883	243
AKR	Akrotiri	107	N34 34.765 E032 57.769	147
PHA	Paphos	79	N34 42.997 E032 28.963	35
RMD	Ramat David	84	N32 39.892 E035 11.265	136
OS66	Kuweires Military Aviation Institute	36	N36 11.362 E037 34.226	1200



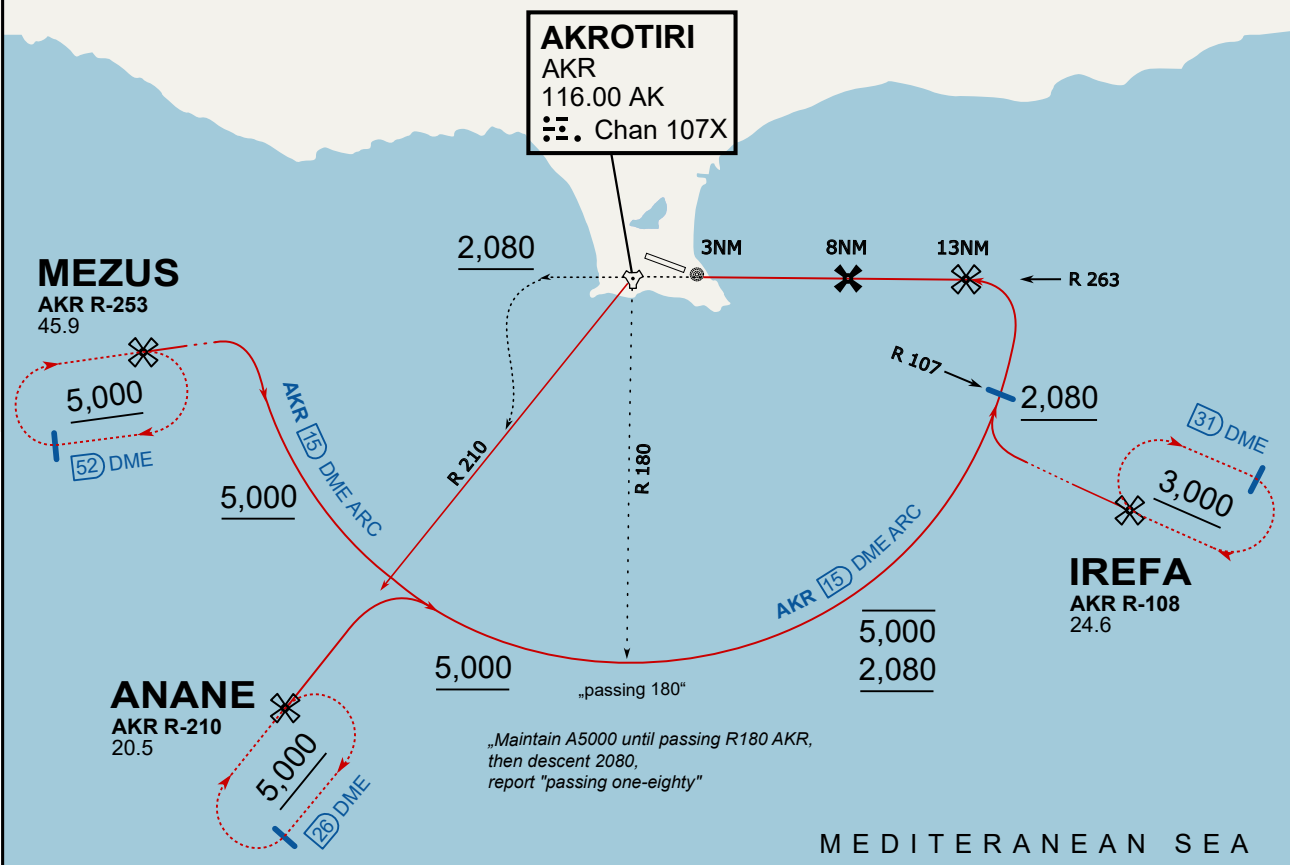




ATIS
 288.200
AKROTIRI GROUND
 122.100
AKROTIRI TOWER
 339.850
APP (OVERLORD)
 377.800

NOT FOR CIVIL USE

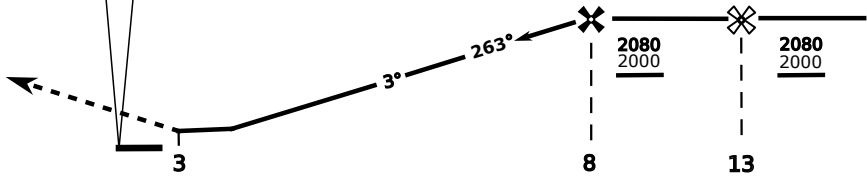
CAUTION: If unable to comply with restrictions advise ATC prior to departure.



On Track 263° climb A 4.000'.
 passing 2.080' (2.000' AAL)
 turn left and intercept R-210 AKR
 to ANANE.
 Enter ANANE Holding.

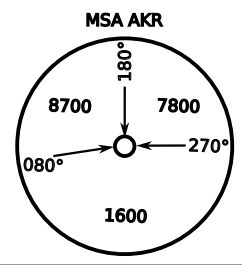


DME AKR	7	6	5	4
ALT	1780	1460	1140	820

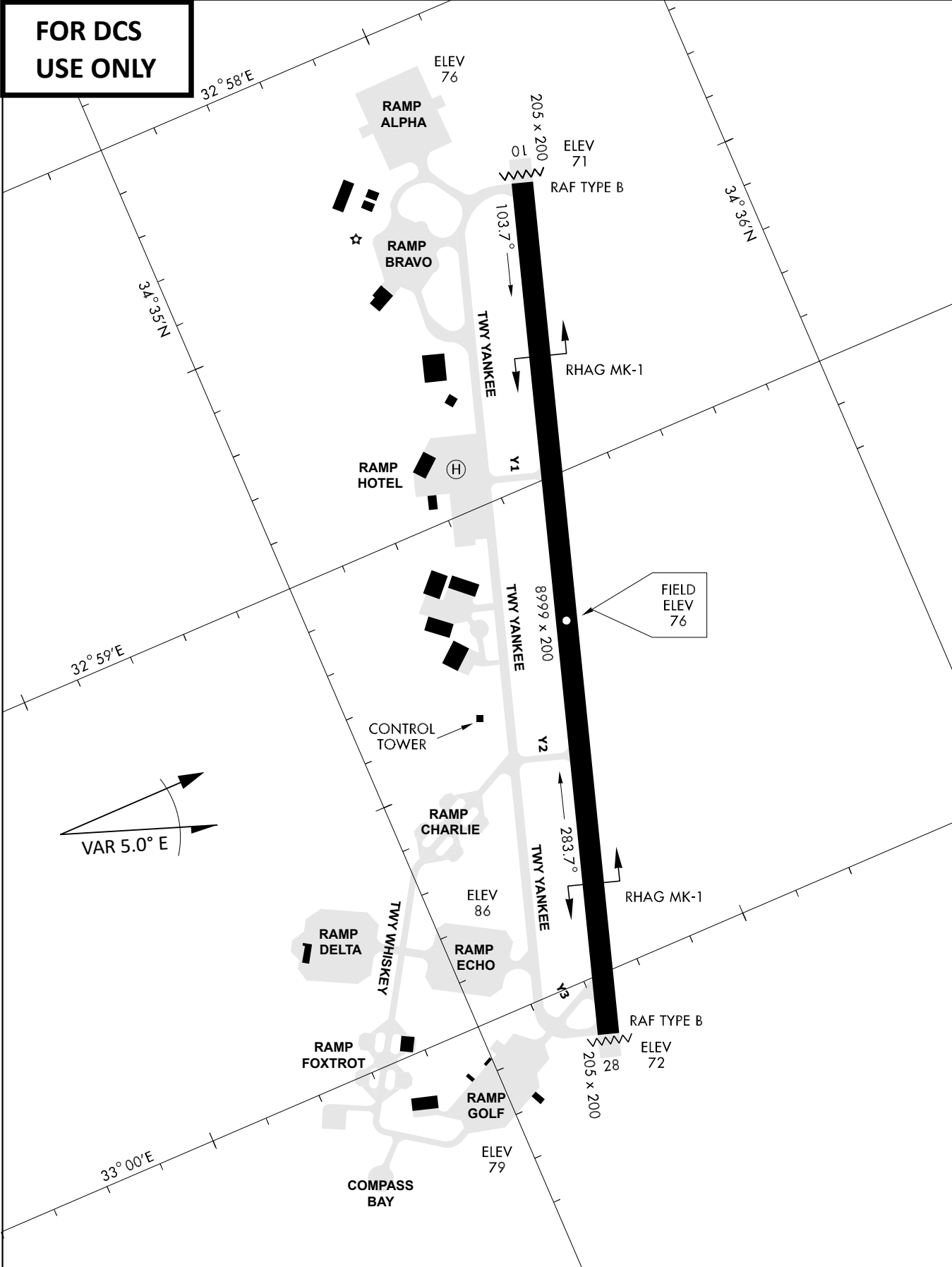


THR Elev 74ft DME AKR

CAT	TAC	CIRCLE	GS (kts)	80	120	150	180	210
A	500(430)	680 (610) 2000m	FAF - MAPt (4.1NM)	3:06	2:03	1:38	1:22	1:10
B	1300m		RoD (fpm)	420	640	800	950	1110
C	780 (710)	780 (710) 3300m	- CIRCLING PROHIBITED N of Rwy - final track is offset 20° right of RCL and Intcp 1.1NM before THR - when established on final contact tower - Timing not Auth to define MAPt					
D	2600m	780 (710) 3600m						
E	1380 (1310) 5000m	1380 (1310) 5000m						



**FOR DCS
 USE ONLY**



ATIS	AKROTIRI GND	AKROTIRI TWR	OVERLORD CONTROL	TACAN	FIELD ELEVATION
288.20 MHz	240.10 122.10	339.85 130.075	377.8	AKR 107X	75 [ft] 23 [m]