

**MISSION DATA CARD**

OPORD		Callsign		Mission		Date/Time	
3045/2024		Nazgul 6		Training		301400JUN24	
Task						Freq	
AO						262.45	
Departure				Recovery			
VFR				VFR			
#	Callsign	Pilot		IFF	TCN	LSR	NET
-1	Nazgul 6-1	Striver/Uta		1161	1Y	1561	

**LOADOUT**

A/A	2xA120C, 2xA9M				GUN	100% SAPHEI	
A/G					CHF	120	
POD	TGT, NAV				FLR	60	
TKS	2xFT610				FUEL	100%	

**TOLD**

	Takeoff	Target	Joker	Bingo	Land
FUEL	30518				

**AIRBASES**

	Name	TCN	ATIS	GND	TWR	RWY	Elev	ILS
Dep	Incirlik AFB	21X	377.47 5	371.35	360.1	5	190	
Arr	Incirlik AFB	21X	377.47 5	371.35	360.1	5	190	

**FLIGHTPLAN**

#	Name	Navaid/Coords/DME	ALT	TOT
1	INITIAL 23	N37 03.956 E035 31.866		
2	TIGER	N37 10.618 E035 35.732	2000	
3	FALCON	N37 05.067 E035 40.888	2000	
4	INITIAL 05	N36 56.654 E035 19.839		
5	EAGLE	N36 52.938 E035 21.611	2000	

**OTHER FLIGHTS**

Callsign	Mission	Airframe	Freq	TCN	Grpld	Laser
Monster 2	Training	4x A-10C	132.15	1/64	25	161X
	AO		Task	Mission Training		
Tiger 1	Training	2x F/A-18C	261.15	1/64		155X
	AO		Task			

**RADIO CHANNELS**

#	Freq	Name
1		Flight/Squadron specific
2	288.2	Akrotiri ATIS
3	240.1	Akrotiri Ground
4	339.85	Aktrotiri Tower
5	335.05	Akrotiri Approach
6	360.1	Incirlik Tower
7	371.35	Incirlik Ground
8	377.475	Incirlik ATIS
9		No Preset
10	127.3	Paphos ATIS
11	353.8	Paphos Tower
12	304.0	CVN-73 George Washington
13	302.0	LHA-1 Tarawa
14	259.0	CV-59 Forrestal
15		No Preset
16	377.8	Overlord
17	265.0	KC-135 Texaco-1 medium/slow
18	319.8	KC-135 Arco-1
19	360.8	KC-135MPRS Arco-2
20	256.0	S-3B Recovery Tanker

**RAMROD**

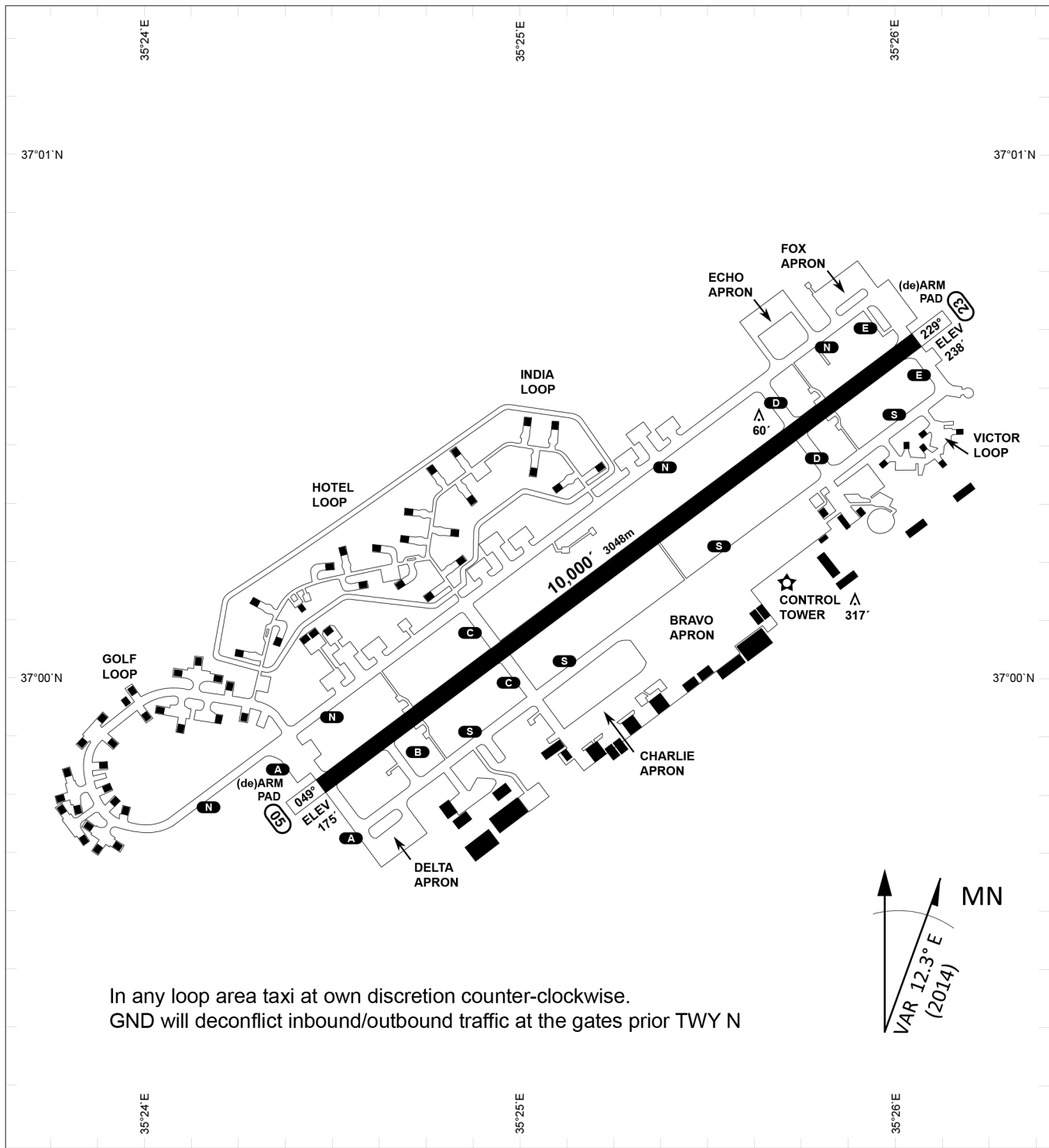
0	1	2	3	4	5	6	7	8	9
B	L	A	C	K	T	H	O	R	N

**KTC 1400 C**

	0	1	2	3	4	5	6	7	8	9
A	KIOP	NLD	BCW	AM	XQ	GTH	VR	UJ	EY	SF
B	VYRE	LXS	OMC	UB	NF	GJI	KP	WA	DH	QT
C	IOME	XYC	HPA	JQ	UG	RVB	FS	ND	TL	WK
D	MVAQ	YTB	XHG	FP	DU	ICL	EO	JK	SW	NR
E	UQMA	VLF	IKB	EG	WC	YPT	JX	RN	DH	OS
F	DQAG	ISU	FJK	XO	WV	TCR	LP	MN	YH	EB
G	LAXE	JNV	DWU	IK	OQ	TRP	CH	GS	MB	FY
H	CUSD	MPR	NIK	XY	FE	WAJ	HL	GV	QB	OT
I	MORS	LJK	HCB	XD	EY	IGV	WU	QA	TP	FN
J	OLKI	CAH	SXJ	YT	GF	DRU	QV	MP	EW	BN
K	NHUC	TGX	BRO	IE	QM	LSY	JA	PD	VW	FK
L	AUCY	LWF	PJO	TX	KG	QNI	BS	RD	MV	EH
M	WTKM	LAX	EDP	BY	CS	ONV	IJ	FR	GH	UQ
N	IWBY	TOG	XND	LP	JR	KAU	EV	MC	QS	HF
O	UHCX	FMG	VWB	SN	DQ	POK	TL	YE	IA	JR
P	VPIO	MAJ	WQT	GH	RF	CYU	DX	NE	SK	LB
Q	HAJL	XBY	FEU	CO	PN	SKW	TG	DR	MQ	VI
R	PKHJ	WVA	STU	CG	OD	YFB	MI	LQ	XN	ER
S	IVQL	RSD	OGB	XJ	TA	UEH	NC	YW	FP	KM
T	LPOA	VKU	RWS	GC	EX	BYI	TJ	QD	NH	MF
U	YMHJ	WDB	OFA	GI	PT	EVL	QK	XN	UR	SC
V	RNMT	PVL	UCD	QO	GW	YKF	XE	BI	JH	AS
W	MKNJ	HSV	OYX	CU	DL	IFW	PA	BT	RE	GQ
X	OTYU	AQD	LRP	MI	SG	CHB	VK	WJ	FN	XE
Y	HSKW	URA	QCO	MX	JE	FPG	VB	IN	DT	YL

**NAVAIDS**

<b>Id</b>	<b>Name</b>	<b>Channel</b>	<b>Position</b>	<b>Elevation</b>
DAN	Incirlik	21	N37 00.950 E035 26.883	243
AKR	Akrotiri	107	N34 34.765 E032 57.769	147
PHA	Paphos	79	N34 42.997 E032 28.963	35
RMD	Ramat David	84	N32 39.892 E035 11.265	136
OS66	Kuweires Military Aviation Institute	36	N36 11.362 E037 34.226	1200



PAR	RWY	CAT	MINIMA	ARP	ELEV	Scale 1:35'500
	21L	A B D E	2057 - 0.8 200 (200-0.8/1.6) GS 3°	37°0'56.000" N 35°26'53.000" E	1857 [ft]	0 300 600 900 1200 1500 [m] 0 1000 2000 3000 4000 5000 [ft]
	3R	A B D E	2057 - 0.8 200 (200-0.8/1.6) GS 3°		566 [m]	
SRA	21R	A C D E	2257 - 1.2 350 (350-1.2/1.6)			
	3L	A C D E	2257 - 1.2 350 (350-1.2/1.6)			

RWY	TORA	TORA from D	TORA from B	COURSE	PSN THR	ALS
23	10,000 [ft] 3048 [m]	8,000 [ft] 2438 [m]		235°	37°00.611'N 035°26.368'E	⊙
05	10,000 [ft] 3048 [m]		9,000 [ft] 2743 [m]	055°	36°59.043'N 035°24.760'E	⊙

ATIS	INCIRLIK GROUND	INCIRLIK TOWER	CONTROL	TACAN	ILS RWY 05	ILS RWY 23
377.475	371.350   123.020	360.100   121.100	337.800	DAN21x	109.3MHz	111.7MHz

ATIS  
377.475 (#8)

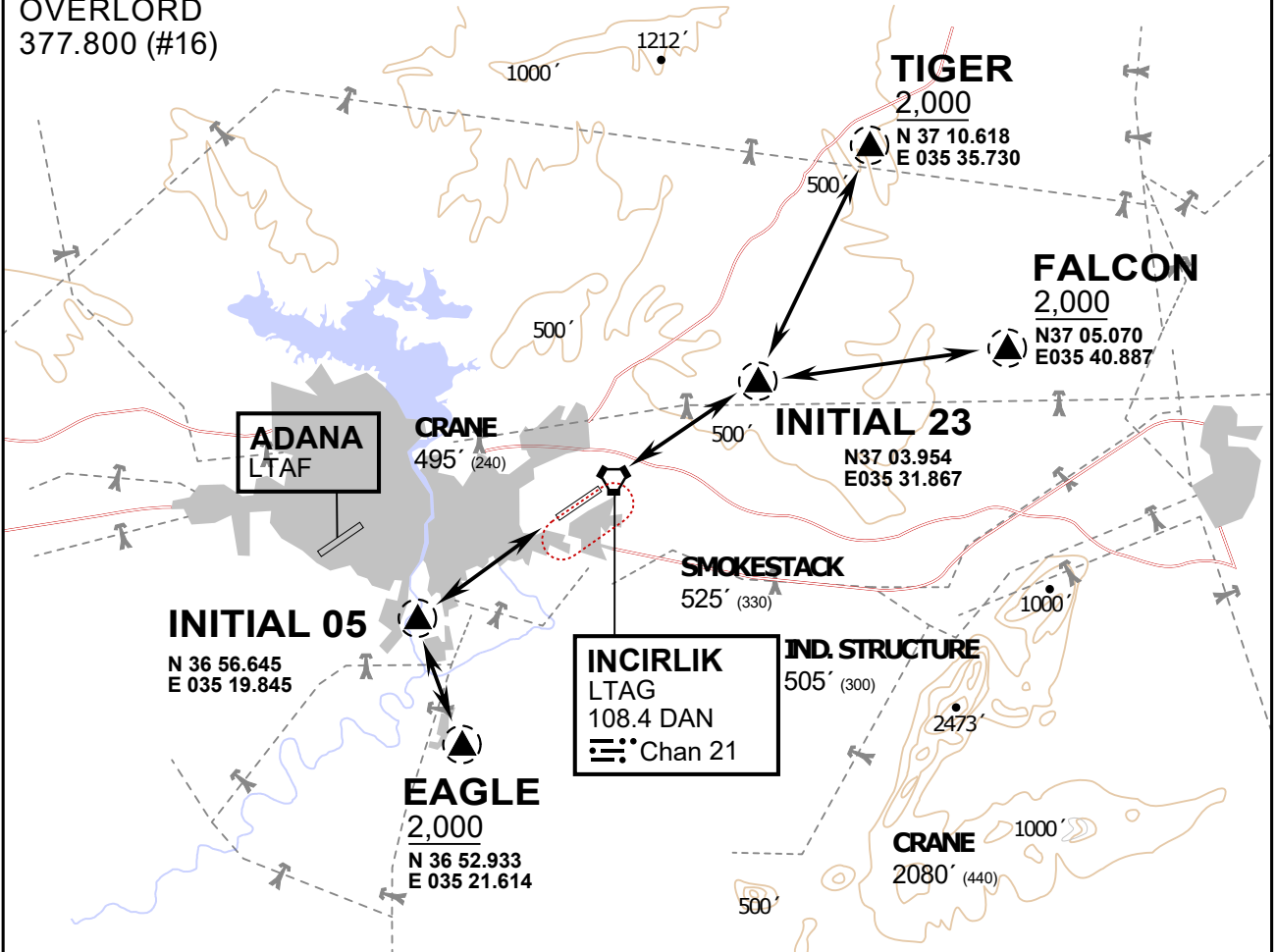
INCIRLIK GROUND  
371.3500 (#7)

INCIRLIK TOWER  
360.100 (#6)

OVERLORD  
377.800 (#16)

NOT FOR CIVIL USE

CAUTION: If unable to comply with restrictions advise ATC prior to departure.



vJaBoG32 ETTR NAV CHART

**ARR / DEP ROUTE DESCRIPTION**

**STRAIGHT-IN RWY 05 / 23**

Pass entry EAGLE / TIGER / FALCON at 2000' and INITIAL at 1500'

**OVERHEAD BREAK RWY 05 / 23**

Pass entry EAGLE / TIGER / FALCON at 2500', pass INITIAL at 2000' break to the south at 2000' pattern altitude.

**HELICOPTER ROUTES**

Pass entry EAGLE / TIGER / FALCON at 1000' or below, pass INITIAL at 1000' break to the south at 1000' pattern altitude.

**DEPARTURE ALL DIRECTIONS**

pass DER below 1500ft



ATIS  
377.475 (#8)

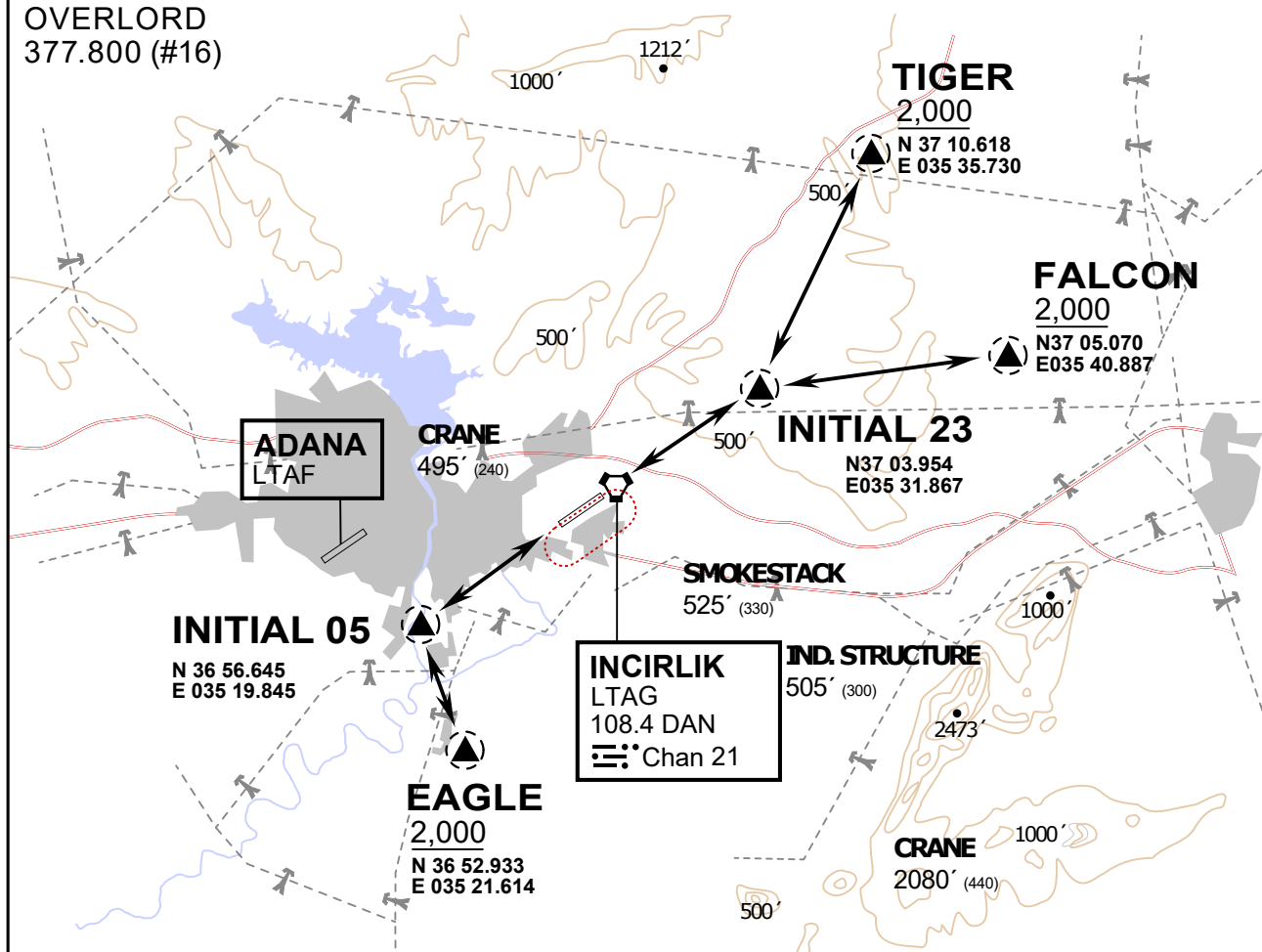
INCIRLIK GROUND  
371.3500 (#7)

INCIRLIK TOWER  
360.100 (#6)

OVERLORD  
377.800 (#16)

NOT FOR CIVIL USE

CAUTION: If unable to comply  
with restrictions advise ATC  
prior to departure.



vJaBoG32 ETTR NAV CHART



### ARR / DEP ROUTE DESCRIPTION

#### STRAIGHT-IN RWY 05 / 23

Pass entry EAGLE / TIGER / FALCON at 2000' and INITIAL at 1500'

#### OVERHEAD BREAK RWY 05 / 23

Pass entry EAGLE / TIGER / FALCON at 2500',  
pass INITIAL at 2000' break to the south at 2000' pattern altitude.

#### HELICOPTER ROUTES

Pass entry EAGLE / TIGER / FALCON at 1000' or below, pass INITIAL at 1000' break to the south at 1000' pattern altitude.

#### DEPARTURE ALL DIRECTIONS

pass DER below 1500ft