

**MISSION DATA CARD**

OPORD		Callsign		Mission		Date/Time		
3043/2024		Nazgul		Training		291850JUN24		
Task							Freq	
AO							262.45	
Departure				Recovery				
FLEX 3 TURNOUT				STRYK				
#	Callsign		Pilot		IFF	TCN	LSR	NET

**LOADOUT**

A/A						GUN	
A/G						CHF	
POD						FLR	
TKS						FUEL	

**TOLD**

	Takeoff	Target	Joker	Bingo	Land
FUEL	7163				

**AIRBASES**

	Name	TCN	ATIS	GND	TWR	RWY	Elev	ILS
Dep	Nellis AFB	12X	270.1	275.8	327.0	21L	1850	109.1
Arr	Nellis AFB	12X	270.1	275.8	327.0	21L	1850	109.1
Div	Creech AFB	87X	290.45	275.8	360.6			

**RADIO CHANNELS**

#	Freq	Name
1		Flight/Squadron specific
2	289.4	Nellis Clearance Delivery
3	275.8	Nellis Ground
4	327.0	Nellis Tower
5	385.4	Nellis Approach/Departure West
6	273.55	Nellis Approach/Departure East
7	317.525	Nellis Control -- Sally
8	254.4	Nellis Control-- Lee
9	305.6	SOF Bullseye
10	343.725	EMERGENCY SINGLE FRQ
11	270.1	Nellis ATIS
12	360.625	Creech AFB Tower
13	250.1	HAVE QUICK 13
14	251.1	HAVE QUICK 14
15	252.1	HAVE QUICK 15
16	377.8	Blackjack
17	265.0	KC-135 AR-641A
18	360.8	KC-135MPRS AR-635
19	319.8	KC-135MPRS AR-625
20	300.05	KC-135 AR-231V

**RAMROD**

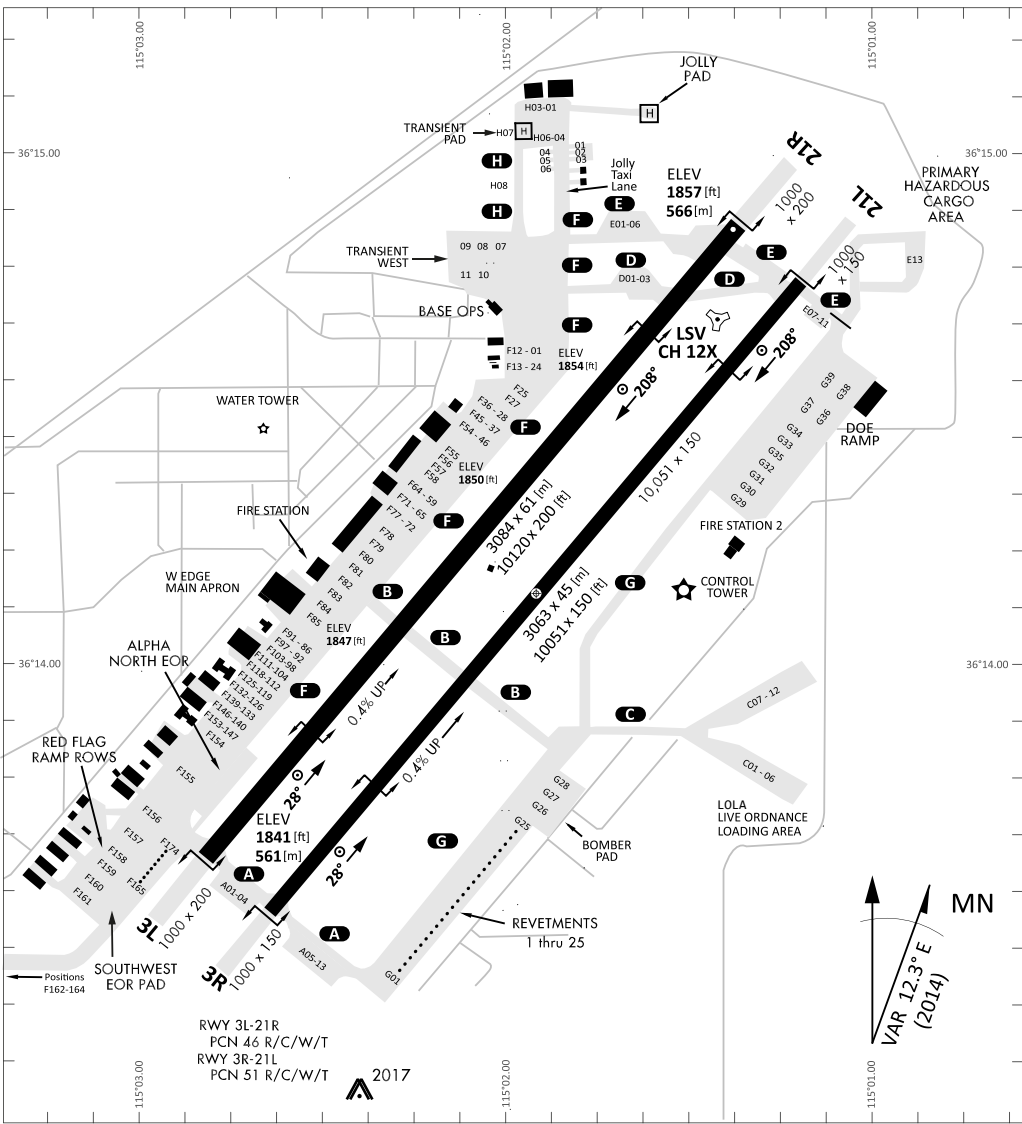
0	1	2	3	4	5	6	7	8	9
B	O	U	L	E	V	A	R	D	S

**KTC 1400 C**

	0	1	2	3	4	5	6	7	8	9
A	IPFL	BTK	AVG	MO	UQ	JND	YH	WC	RS	XE
B	GUMK	JHR	FAP	TB	EX	QIL	NY	OD	SW	CV
C	DOSX	GUW	HBL	FP	CT	NKJ	EA	YR	VI	MQ
D	OMNR	THX	QUY	PE	FK	DSA	BW	VJ	CI	LG
E	TMIQ	BOG	UEH	CJ	WR	LDF	AV	SP	XN	KY
F	GDVA	RUE	FQX	BO	TC	PYN	WJ	IM	LK	SH
G	URGQ	JDL	IAF	VH	YK	SCX	EB	PM	ON	WT
H	OWBI	QRP	ECK	AF	HJ	MDL	GU	TV	NX	SY
I	HCAT	YVP	WJM	EX	UN	GKD	OR	FS	QL	BI
J	QFTV	LDY	WKU	JG	IH	PBM	EA	NX	OS	CR
K	KJHI	GBC	MDA	PL	XW	UFE	VR	ST	OQ	NY
L	VQAH	WRY	LDS	KJ	XP	MGU	OC	NB	FT	IE
M	DKER	NLW	FIT	MY	AO	UBX	PQ	HJ	VS	CG
N	LGPJ	HBW	UCQ	DA	YM	RNI	TV	KE	OS	FX
O	FGNW	CHD	BLP	YK	MJ	OUT	AI	SQ	XR	VE
P	RLIV	NDU	OGK	MJ	TC	XEB	QY	WF	SA	HP
Q	LTBW	KJS	RVG	UI	XM	YPA	EN	QH	FO	DC
R	RUGC	FKB	EPV	MJ	IT	WXY	HN	QS	LO	DA
S	HAME	QLN	FUO	XG	RP	DCT	YI	SB	KJ	VW
T	BRUS	MFV	HXY	JN	GA	WKC	TD	LQ	OE	PI
U	ANMO	TQV	WUB	DY	FI	JRL	GC	SK	XP	HE
V	VFCG	BRI	OYN	MU	LE	TPK	JH	AD	XS	WQ
W	DHBU	ECW	QTO	SY	GP	XML	NJ	KR	IF	VA
X	VKRU	HJS	AOQ	BF	EM	TGD	IW	XL	YC	PN
Y	GHUB	TMA	VPL	NY	DJ	IRC	XS	KE	OF	QW

**NAVAIDS**

<b>Id</b>	<b>Name</b>	<b>Channel</b>	<b>Position</b>	<b>Elevation</b>
BCE	Bryce Canyon	75	N3741.35 W11218.23	9040
BIH	Bishop	33	N3722.62 W11821.99	4114
BLD	Boulder	114	N3559.75 W11451.82	3650
BTY	Beatty	94	N3648.54 W11644.86	2925
CDC	Cedar City	120	N3747.24 W11304.90	5463
DAG	Daggett	79	N3457.75 W11634.69	1760
EED	Needles	99	N3445.96 W11428.43	650
GFS	Goffs	91	N3507.87 W11510.59	4019
GRL	Groom Lake	18	N3713.91 W11548.16	4475
HEC	Hector	74	N3447.83 W11627.78	1854
ILC	Wilson Creek	110	N3815.02 W11423.65	9318
INS	Creech AFB	87	N3635.20 W11540.12	3101
LAS	McCarran Intl	116	N3604.78 W11509.59	2142
LSV	Nellis	12	N3614.68 W11501.50	1864
MLF	Milford	58	N3821.62 W11300.79	4977
MMM	Mormon Mesa	90	N3646.16 W11416.65	2120
MVA	Mina	98	N3833.92 W11801.97	7860
OAL	Coale Dale	124	N3800.20 W11746.23	4800
PGS	Peach Springs	57	N3537.48 W11332.67	4754
TPH	Tonopah Muni	119	N3801.84 W11702.01	5330
TQQ	Silverbow	77	N3748.00 W11647.00	5500
UTI	St George	23	N3705.29 W11335.53	2871



RWY 3L-21R  
 PCN 46 R/C/W/T  
 RWY 3R-21L  
 PCN 51 R/C/W/T  
 2017

PAR	RWY	CAT	MINIMA		ARP	ELEV	Scale 1:35'500	
	21L	A B D E	2057 - 0.8 200 (200-0.8/1.6)	GS 3°	36° 14.060° N 115° 01.058° W	1857 [ft] 566 [m]	0 300 600 900 1200 1500 [m]	
	3R	A B D E	2057 - 0.8 200 (200-0.8/1.6)	GS 3°			0 1000 2000 3000 4000 5000 [ft]	
SRA	21R	A C D E	2257 - 1.2 350 (350-1.2/1.6)					
	3L	A C D E	2257 - 1.2 350 (350-1.2/1.6)					

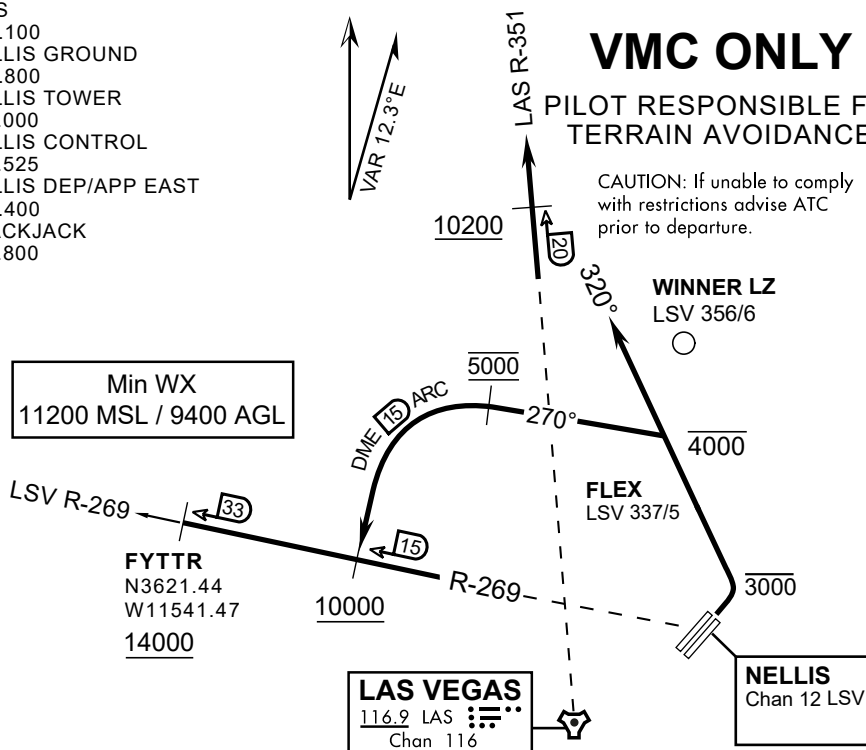
RWY	TORA	TODA	ASDA	LDA	PSN	THR	ALS
21L	10051 [ft] 3063 [m]	11051 [ft] 3368 [m]	11051 [ft] 3368 [m]	10051 [ft] 3063 [m]	36°14.043' N	115°01.018' W	⊕
3R	10120 [ft] 3084 [m]	11120 [ft] 3398 [m]	11120 [ft] 3398 [m]	10120 [ft] 3084 [m]	36°13.029' N	115°02.038' W	

ATIS	NELLIS GROUND	NELLIS TOWER	NELLIS CONTROL	TACAN	ILS RWY 21L	NELLIS EAST	NELLIS WEST
270.100 MHz	275.800   121.800	327.000   132.55	317.525	LSV 12X	109.10 Mhz	384.400	385.000

ATIS  
270.100  
NELLIS GROUND  
275.800  
NELLIS TOWER  
327.000  
NELLIS CONTROL  
317.525  
NELLIS DEP/APP EAST  
384.400  
BLACKJACK  
377.800

Min WX  
11200 MSL / 9400 AGL



▼ Request from GROUND prior to Taxi and APVD by TWR prior to TAKEOFF

1. Used for RWY 03 departures regardless of active runway to expedite the departure movement.
2. ATC may initiate to apply Simultaneous Opposite Direction Operations (SODO) when filed on FYTTT TWO or DREAM THREE and arrivals are landing RWY21.
3. ATC/aircrew may initiate to provide quick turn out to FYTTT TWO when departing RWY 03.
4. Procedure is VFR to IFR. During VFR portion aircrews are responsible for terrain clearance. CLASS B VFR separation services will be provided as appropriate.

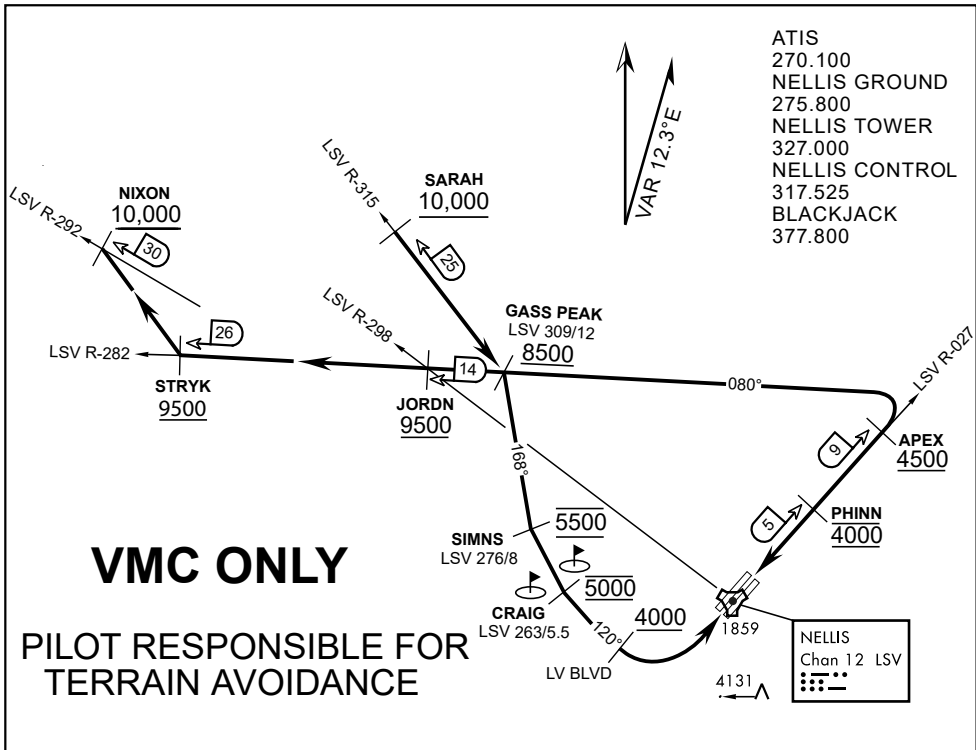
FYTTT THREE:

1. Remain below 3000' MSL until north of Race Track and turned westbound
2. Turn left within 4NM of Nellis direct FLEX.
3. Fly north of FLEX at or below 4000' MSL and then heading 270°.
4. Intercept the LSV 15DME arc at or below 5000' MSL and arc south.
5. Intercept the LSV R-269/15 at or above 10,000' MSL and track outbound.  
Aircrews are VFR until intercepting the LSV R-269 at or above 10,200' MSL.

DREAM FOUR:

1. Remain below 3000' MSL until north of Race Track
2. Fly north of FLEX at or below 4000' MSL and then heading 320°.
3. Intercept the LSV R-349 (Ch 116) and comply with DREAM THREE restrictions.  
Aircrews are VFR until crossing the LSV R-349/20 at or above 10,200' MSL
4. If unable to comply with restrictions, maintain VFR and advise approach.
5. All FLEX Turnouts to the DREAM FOUR will comply with RWY 21 DREAM FOUR (intercept LAS R-351) outbound) regardless of active runway.

FLEX TURNOUT 03 DEPARTURE AND TRANSITIONS



**APPROACH ROUTE DESCRIPTION**

**APPROACH RWY 3L/R**

Cross STRYK at or above 9,500' MSL, proceed direct GASS PEAK. Cross JORDN at or above 9,500' MSL, cross GASS PEAK at or above 8,500' MSL. Proceed direct SIMNS and cross at 5,500' MSL. Cross Las Vegas Blvd at or above 4,000' MSL then to 3,500' MSL for Initial. Remain within 4 DME if LSV on turn to final.

**VFR STRAIGHT-IN RWY 3L/R**

Depart CRAIG & descend to be at 3,000' MSL by Las Vegas Blvd. Do not descend below 3,000' MSL until within 5 DME of LSV or 4 NM of the runway on turn to final.

**APPROACH RWY 21L/R**

Cross STRYK at or above 9,500' MSL, proceed direct GASS PEAK. Cross JORDN at or above 9,500' MSL, cross GASS PEAK at or above 8,500' MSL. Cross APEX at or above 4,500' MSL then direct 5NM initial. Descend to cross PHINN at 4,000' MSL, Inside 5 NM descend to 3,500' MSL.

**VFR STRAIGHT-IN RWY 21L/R**

Cross APEX at 4,000' MSL. Descend to be at 3,000' MSL at PHINN. Descend to 3,000' MSL at LSV 027/5.

**RANGE 63B EXIT**

**SOUTH:** Via NIXON at or above 10,000' MSL, then direct STRYK.

**EAST:** Via SARAH at or above 10,000' MSL, then direct GASS PEAK.



INDIAN SPRINGS, NEVADA

TACAN INS Chan 87	APCH CRS 065°	Rwy ldg TDZE 3133	9002 3113
		Arpt Elev 3113	

INDIAN SPRINGS AF AUX (KINS)

**▼** \* MISSED APPROACH: Straight ahead to INS TACAN, intercept INS R-outbound, cross 17 DME at or above 9500, then direkt KSV TACAN 114

NELLIS CON

CREECH AFB TOWER  
118.30 60.60

GND CON

**NOT FOR CIVIL USE**

FOR USE UNDER BASIC VFR  
WEATHER MINIMUMS ONLY

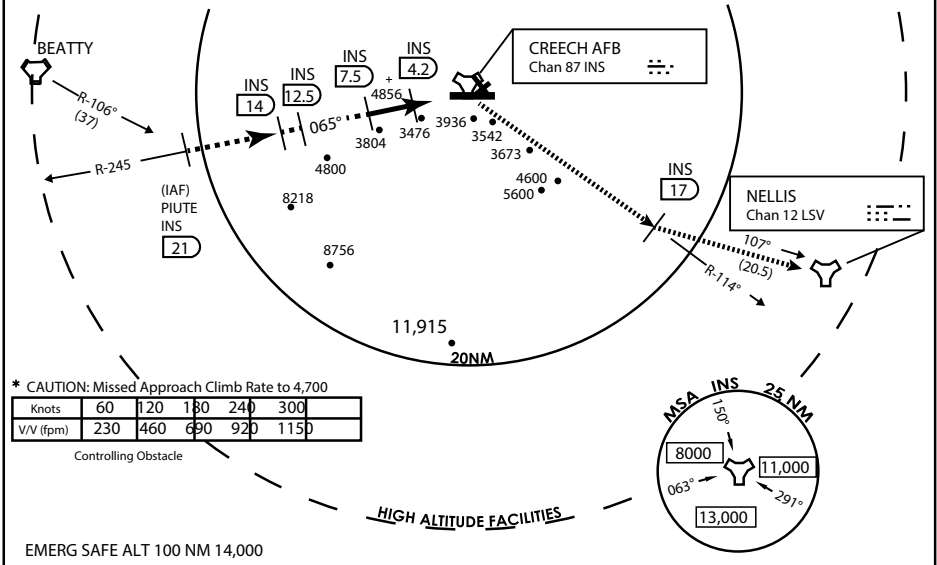
PILOT IS RESPONSIBLE FOR TERRAIN/OBSTACLE AVOIDANCE AND APPROPRIATE VFR CLOUD CLEARANCE FOR ALL

CAUTION: Descent gradients are greater than allowed under standard TERPS criteria and inbound course does not meet straight-in criteria

CAUTION: Final approach course crosses Runway centerline at MIDFIELD. Maneuvering left of course required prior to landing. Do not Maneuver farther north than the INS R- 258

Modified by viaBog 66 for use with DCS  
NOT FOR REAL LIFE NAVIGATION

Modified by viaBog 66 for use with DCS  
NOT FOR REAL LIFE NAVIGATION



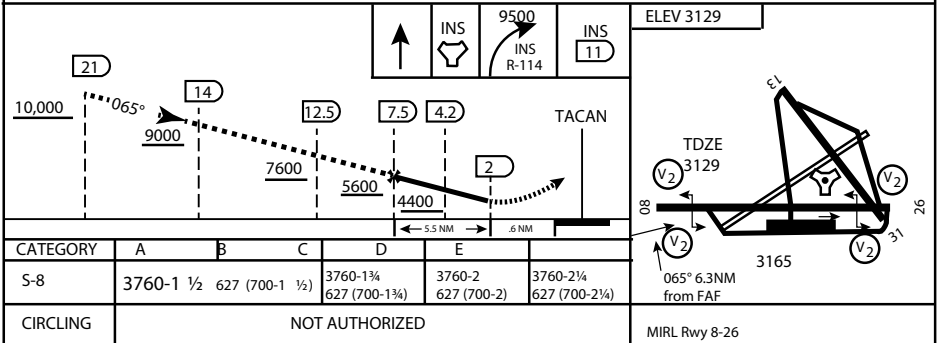
\* CAUTION: Missed Approach Climb Rate to 4,700

Knots	60	120	180	240	300
V/V (fpm)	230	460	690	920	1150

Controlling Obstacle

HIGH ALTITUDE FACILITIES

EMERG SAFE ALT 100 NM 14,000



CITY OF INDIAN, NEVADA

INDIAN SPRINGS AF AUX (KINS)

(FOR DAY VFR USE ONLY)





# AIRPORT DIAGRAM

476 VFG

CREECH AFB (KINS)  
INDIAN SPRINGS, NEVADA

ATIS  
 122.5  
 CREECH TOWER  
 118.4 360.7 38.65  
 GND CON  
 118.3 275.8  
 CLNC DEL

115°42'W

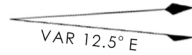
FIELD  
 ELEV  
 3127

80

972 X 150

HOT CARGO PAD

BAK-12

  
 VAR 12.5° E

WEST EOR

115°41'W

476 VFG JAN 2019

476 VFG JAN 2019

CONTROL TOWER  
 BASE OPS

RPA LOLA WEST

RPA LOLA EAST

LOLA / HUNG ORDNANCE

199 X 100  
 ELEV 3127  
 RUNWAY 31/13  
 MQ/RQ-1 ONLY

9002 X 150

258.5°

860 X 100

313.8°

4064 X 100

115°40'W

BAK-12

ELEV 3127

EAST EOR

1030 X 150

26

# AIRPORT DIAGRAM

INDIAN SPRINGS, NEVADA  
CREECH AFB (KINS)