

MISSION DATA CARD

OPORD	Callsign	Mission	Date/Time			
3041/2024	Edelweiss 6	Training	272005JUN24			
Task						Freq
AO						134.65
Departure			Recovery			
RWY10 SID			RWY10 VFR			
#	Callsign	Pilot	IFF	TCN	LSR	NET
-1	Edelweiss 6-1	Phil	1761	1Y	1661	40/01

LOADOUT

A/A					GUN	
A/G					CHF	
POD					FLR	
TKS					FUEL	

TOLD

	Takeoff	Target	Joker	Bingo	Land
FUEL	10803				

AIRBASES

	Name	TCN	ATIS	GND	TWR	RWY	Elev	ILS
Dep	Akrotiri AFB	107X	288.2	240.1	339.85	28	62	109.7
Arr	Akrotiri AFB	107X	288.2	240.1	339.85	28	62	109.7

FLIGHTPLAN

#	Name	Navaid/Coords/DME	ALT	TOT
1	PAPA	N34 39.390 E032 46.480	5000	
2	ECHO	N34 42.600 E033 10	5000	

OTHER FLIGHTS

Callsign	Mission	Airframe	Freq	TCN	Grpld	Laser
Tiger 1	Strike	3x F/A-18C	261.15	1/64	1	155X
AO	ivo DMSK / 25B28	Task	ATO1001 / PKG-A			
Raptor 1	SEAD	4x F-16C	134.0	1/64		162X
AO	Al-Dumayr	Task	ATO 1003			
Raptor 2	DEAD	4x F-16C	134.5	1/64		162X
AO	Damaskus	Task	ATO 1002			
Fury 4	FAC(A)	1x A-10C	32.0	1/64	32	164X
AO	ATO 1005 20B21	Task	FAC(A)			
Monster 1	CAS	2x A-10C	132.15	1/64	21	161X
AO	ATO 1005 00B16	Task	CAS			
T-Rex 2	Strike	4x A-10C	132.25	1/64	25	165X
AO	ATO 1005 00B16	Task	Strike Marj			
Nazgul 6	Training	4x F-15E	262.45	1/64		156X
AO	Al-Dumayr	Task	ATO 1003 30B40			
Misty 5	Air Assault	4x AH-64D	133.5	1/64		144X
AO	ATO 1005	Task	Escort			
Dustoff* 1	Transport	1x UH-1H	32.0	1/64		170X
AO		Task	air assault			
Raptor 3	DEAD	1x F-16C	134.0	1/64		162X
AO	Al-Dumayr	Task	LOADOUT DEAD			
Hawg 3	Strike	3x A-10C	232.85	29/92	33	166X
AO	ATO 1004 00B16	Task	ATO 1004 / Strike Marj			
Panther 5	Escort	2x F/A-18C	261.15	1/64	1	155X
AO	ivo DMSK / 25B28	Task	ATO1001 / Escort			

RADIO CHANNELS

#	Freq	Name
1		Flight/Squadron specific
2	288.2	Akrotiri ATIS
3	240.1	Akrotiri Ground
4	339.85	Aktrotiri Tower
5	335.05	Akrotiri Approach
6	360.1	Incirlik Tower
7	371.35	Incirlik Ground
8	377.475	Incirlik ATIS
9		No Preset
10	127.3	Paphos ATIS
11	353.8	Paphos Tower
12	304.0	CVN-73 George Washington
13	302.0	LHA-1 Tarawa
14	259.0	CV-59 Forrestal
15		No Preset
16	377.8	Overlord
17	265.0	KC-135 Texaco-1 medium/slow
18	319.8	KC-135 Arco-1
19	360.8	KC-135MPRS Arco-2
20	256.0	S-3B Recovery Tanker

RAMROD

0	1	2	3	4	5	6	7	8	9
D	E	S	P	I	C	A	B	L	Y

KTC 1400 C

	0	1	2	3	4	5	6	7	8	9
A	WKLO	JTP	FHU	QI	ND	MBX	YE	RV	CG	SA
B	QFEO	HRB	TJS	DK	CG	VAP	LW	UN	YX	IM
C	SFDI	YNQ	BLW	TP	VA	RXK	GJ	EC	MO	UH
D	DQJU	YGI	BTV	PA	FR	CMS	LE	OH	WK	NX
E	DSMA	FKN	IJL	WY	VT	UPR	XH	QE	OB	CG
F	RFOK	PLG	TDX	EI	HC	YWQ	SJ	MN	VU	AB
G	JAOB	WRG	KNV	HT	IS	FCL	QP	UX	DY	EM
H	GHUM	DCY	IOQ	WT	EJ	PNL	SF	XB	KA	RV
I	BSDN	VFH	KOQ	CA	XY	GLP	UE	RT	MI	WJ
J	CVGN	APW	FIH	ED	MU	LSX	JT	OQ	KB	YR
K	YSNW	VRB	JKC	PG	QM	ELO	TF	UX	IH	DA
L	TWJO	APS	LFQ	MH	CE	VKY	XN	IB	GU	RD
M	QJSY	MUO	PRI	LB	AE	WFT	HD	XC	VN	KG
N	EMLX	FOP	TYV	QJ	ND	GCB	KI	UH	WA	RS
O	TNFD	HVL	ASO	UP	KG	RJW	CB	XI	MQ	EY
P	OXSK	RUL	IGJ	VM	EF	YDQ	AN	BP	CT	WH
Q	YITU	MGK	QEA	LO	JB	SRH	CD	FW	NX	PV
R	FTHI	DXK	RCE	YB	UJ	SPO	MW	AV	NG	LQ
S	KVQS	BGE	XAM	PD	WL	CUH	IN	JO	TF	YR
T	TCID	AHM	VNS	PJ	BY	XQK	LR	UF	EG	WO
U	KVON	UFP	DGC	EW	JX	IYT	AH	BQ	SM	LR
V	KSRQ	LYD	PUM	NB	EF	VHW	TC	JG	AI	XO
W	DXGI	FCP	MNQ	EL	KV	OAW	YU	RJ	TB	SH
X	DXJH	CQP	TIF	NR	LB	SKY	OW	VU	EA	MG
Y	IXOY	FLD	QUH	BG	WA	VJN	PT	MC	RE	KS

NAVAIDS

Id	Name	Channel	Position	Elevation
DAN	Incirlik	21	N37 00.950 E035 26.883	243
AKR	Akrotiri	107	N34 34.765 E032 57.769	147
PHA	Paphos	79	N34 42.997 E032 28.963	35
RMD	Ramat David	84	N32 39.892 E035 11.265	136
OS66	Kuweires Military Aviation Institute	36	N36 11.362 E037 34.226	1200

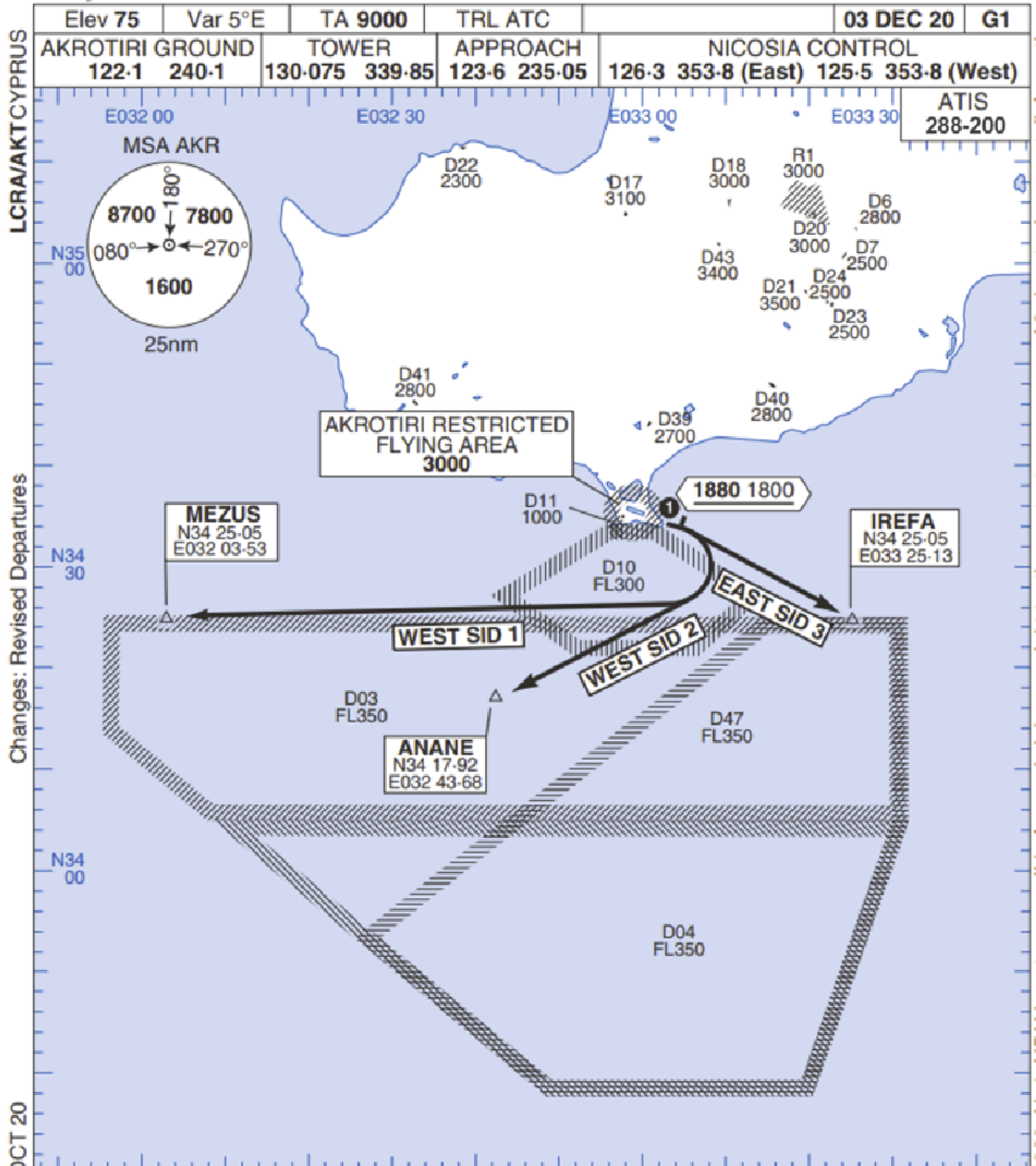
**FOR DCS
 USE ONLY**



ATIS	AKROTIRI GND	AKROTIRI TWR	OVERLORD CONTROL	TACAN	FIELD ELEVATION
288.20 MHz	240.10 122.10	339.85 130.075	377.8	AKR 107X	75 [ft] 23 [m]

Rwy 10 OMNIDIRECTIONAL DEPARTURES

AKROTIRI



LCRA/AKTCYPRUS

Changes: Revised Departures

No1 AIDU Last Amended 06 OCT 20

© UK MOD Crown Copyright 2020. No1 AIDU is not responsible for, and claims no right to, the content or accuracy of 3rd party documents/information.

Elev 75	Var 5°E	TA 9000	TRL ATC		03 DEC 20	G1
AKROTIRI GROUND 122-1 240-1		TOWER 130-075 339-85		APPROACH 123-6 235-05		NICOSIA CONTROL 126-3 353-8 (East) 125-5 353-8 (West)
ATIS 288-200						

- 1. Minimum climb gradient 7% to 1880 1800 for obstacle and operational purposes.
- 2. No turns before DER.
- 3. Turns to north of Rwy **prohibited**.
- 4. Acft unable to locate MEZUS/ANANE/IREFA should request radar vectors from ATC.

SID	RWY	ROUTEING (Including Mnm Noise Routes)
WEST SID 1	10 103°M	Ahead on Rwy Tr to 1880 1800, then right direct to MEZUS. SID terminates at 9000.
WEST SID 2		Ahead on Rwy Tr to 1880 1800, then right direct to ANANE. SID terminates at 9000.
EAST SID 3		Ahead on Rwy Tr to 1880 1800 then right direct to IREFA. SID terminates at 9000.

