

MISSION DATA CARD

OPORD		Callsign		Mission		Date/Time		
3040/2024		Hawg 3		Strike		272000JUN24		
Task	ATO 1004 / Strike Marj					Freq		
AO	ATO 1004 00B16					232.85		
Departure				Recovery				
none				none				
#	Callsign		Pilot		IFF	TCN	LSR	NET
-1	Hawg 3-1		vJaBoG66_Yurgon		2711	29Y	1661	33/01
-2	Hawg 3-2		Xtern1		2712	92Y	1662	33/02

LOADOUT

A/A	2xA9M				GUN	100% CM	
A/G	7M151L, 2xA65D, 4xG38				CHF	240	
POD	A184L, TGP				FLR	240	
TKS					FUEL	100%	

TOLD

	Takeoff	Target	Joker	Bingo	Land
FUEL	11087				

AIRBASES

	Name	TCN	ATIS	GND	TWR	RWY	Elev	ILS
Dep	King Abulla II. AFB			121.9	118.0	31	2291	
Arr	King Abulla II. AFB			121.9	118.0	31	2291	
Div	Ramat David AFB		118.4		118.6	27	125	

FLIGHTPLAN

#	Name	Navaid/Coords/DME	ALT	TOT
1	Sunshine	N32 00 40 E036 12 56	2300	
2	Holding	N32 35 01 E035 35 01	20000	
3	DMPI1	N33 17 07 E036 26 51	2161	
4	DMPI2	N33 17 04 E036 27 13	2161	
5	DMPI3	N33 16 50 E036 27 01	2161	
6	DMPI4	N33 17 17 E036 27 14	2161	
7	DMPI5	N33 17 24 E036 27 31	2161	
8	DMPI6	N33 17 07 E036 27 42	2161	
9	DMPI7	N33 17 35 E036 27 56	2161	
10	DMPI8	N33 17 24 E036 27 50	2161	
11	DMPI9	N33 17 18 E036 28 06	2161	
12	Sunshine	N32 00 40 E036 12 56	2300	

COMMS

Radio	Usage
1	121.90 - 118.00 - 377.80 - 118.00 - 121.90
2	232.85 Secure Cipher 4
3	32.85

OTHER FLIGHTS

Callsign	Mission	Airframe	Freq	TCN	Grpld	Laser
Tiger 1	Strike	3x F/A-18C	261.15	1/64	1	155X
AO	ivo DMSK / 25B28	Task	ATO1001 / PKG-A			
Raptor 1	SEAD	4x F-16C	134.0	1/64		162X
AO	Al-Dumayr	Task	ATO 1003			
Raptor 2	DEAD	4x F-16C	134.5	1/64		162X
AO	Damaskus	Task	ATO 1002			
Fury 4	FAC(A)	1x A-10C	32.0	1/64	32	164X
AO	ATO 1005 20B21	Task	FAC(A)			
Monster 1	CAS	2x A-10C	132.15	1/64	21	161X
AO	ATO 1005 00B16	Task	CAS			
T-Rex 2	Strike	4x A-10C	132.25	1/64	25	165X
AO	ATO 1005 00B16	Task	Strike Marj			
Nazgul 6	Training	4x F-15E	262.45	1/64		156X
AO	Al-Dumayr	Task	ATO 1003 30B40			
Misty 5	Air Assault	4x AH-64D	133.5	1/64		144X
AO	ATO 1005	Task	Escort			
Dustoff* 1	Transport	1x UH-1H	32.0	1/64		170X
AO		Task	air assault			
Raptor 3	DEAD	1x F-16C	134.0	1/64		162X
AO	Al-Dumayr	Task	LOADOUT DEAD			
Edelweiss 6	Training	2x F/A-18C	134.65	1/64	40	166X
AO		Task				
Panther 5	Escort	2x F/A-18C	261.15	1/64	1	155X
AO	ivo DMSK / 25B28	Task	ATO1001 / Escort			

RADIO CHANNELS

#	Freq	Name
1		Flight/Squadron specific
2	288.2	Akrotiri ATIS
3	240.1	Akrotiri Ground
4	339.85	Aktrotiri Tower
5	335.05	Akrotiri Approach
6	360.1	Incirlik Tower
7	371.35	Incirlik Ground
8	377.475	Incirlik ATIS
9		No Preset
10	127.3	Paphos ATIS
11	353.8	Paphos Tower
12	304.0	CVN-73 George Washington
13	302.0	LHA-1 Tarawa
14	259.0	CV-59 Forrestal
15		No Preset
16	377.8	Overlord
17	265.0	KC-135 Texaco-1 medium/slow
18	319.8	KC-135 Arco-1
19	360.8	KC-135MPRS Arco-2
20	256.0	S-3B Recovery Tanker

RAMROD

0	1	2	3	4	5	6	7	8	9
D	E	S	P	I	C	A	B	L	Y

KTC 1400 C

	0	1	2	3	4	5	6	7	8	9
A	WKLO	JTP	FHU	QI	ND	MBX	YE	RV	CG	SA
B	QFEO	HRB	TJS	DK	CG	VAP	LW	UN	YX	IM
C	SFDI	YNQ	BLW	TP	VA	RXK	GJ	EC	MO	UH
D	DQJU	YGI	BTV	PA	FR	CMS	LE	OH	WK	NX
E	DSMA	FKN	IJL	WY	VT	UPR	XH	QE	OB	CG
F	RFOK	PLG	TDX	EI	HC	YWQ	SJ	MN	VU	AB
G	JAOB	WRG	KNV	HT	IS	FCL	QP	UX	DY	EM
H	GHUM	DCY	IOQ	WT	EJ	PNL	SF	XB	KA	RV
I	BSDN	VFH	KOQ	CA	XY	GLP	UE	RT	MI	WJ
J	CVGN	APW	FIH	ED	MU	LSX	JT	OQ	KB	YR
K	YSNW	VRB	JKC	PG	QM	ELO	TF	UX	IH	DA
L	TWJO	APS	LFQ	MH	CE	VKY	XN	IB	GU	RD
M	QJSY	MUO	PRI	LB	AE	WFT	HD	XC	VN	KG
N	EMLX	FOP	TYV	QJ	ND	GCB	KI	UH	WA	RS
O	TNFD	HVL	ASO	UP	KG	RJW	CB	XI	MQ	EY
P	OXSK	RUL	IGJ	VM	EF	YDQ	AN	BP	CT	WH
Q	YITU	MGK	QEA	LO	JB	SRH	CD	FW	NX	PV
R	FTHI	DXK	RCE	YB	UJ	SPO	MW	AV	NG	LQ
S	KVQS	BGE	XAM	PD	WL	CUH	IN	JO	TF	YR
T	TCID	AHM	VNS	PJ	BY	XQK	LR	UF	EG	WO
U	KVON	UFP	DGC	EW	JX	IYT	AH	BQ	SM	LR
V	KSRQ	LYD	PUM	NB	EF	VHW	TC	JG	AI	XO
W	DXGI	FCP	MNQ	EL	KV	OAW	YU	RJ	TB	SH
X	DXJH	CQP	TIF	NR	LB	SKY	OW	VU	EA	MG
Y	IXOY	FLD	QUH	BG	WA	VJN	PT	MC	RE	KS

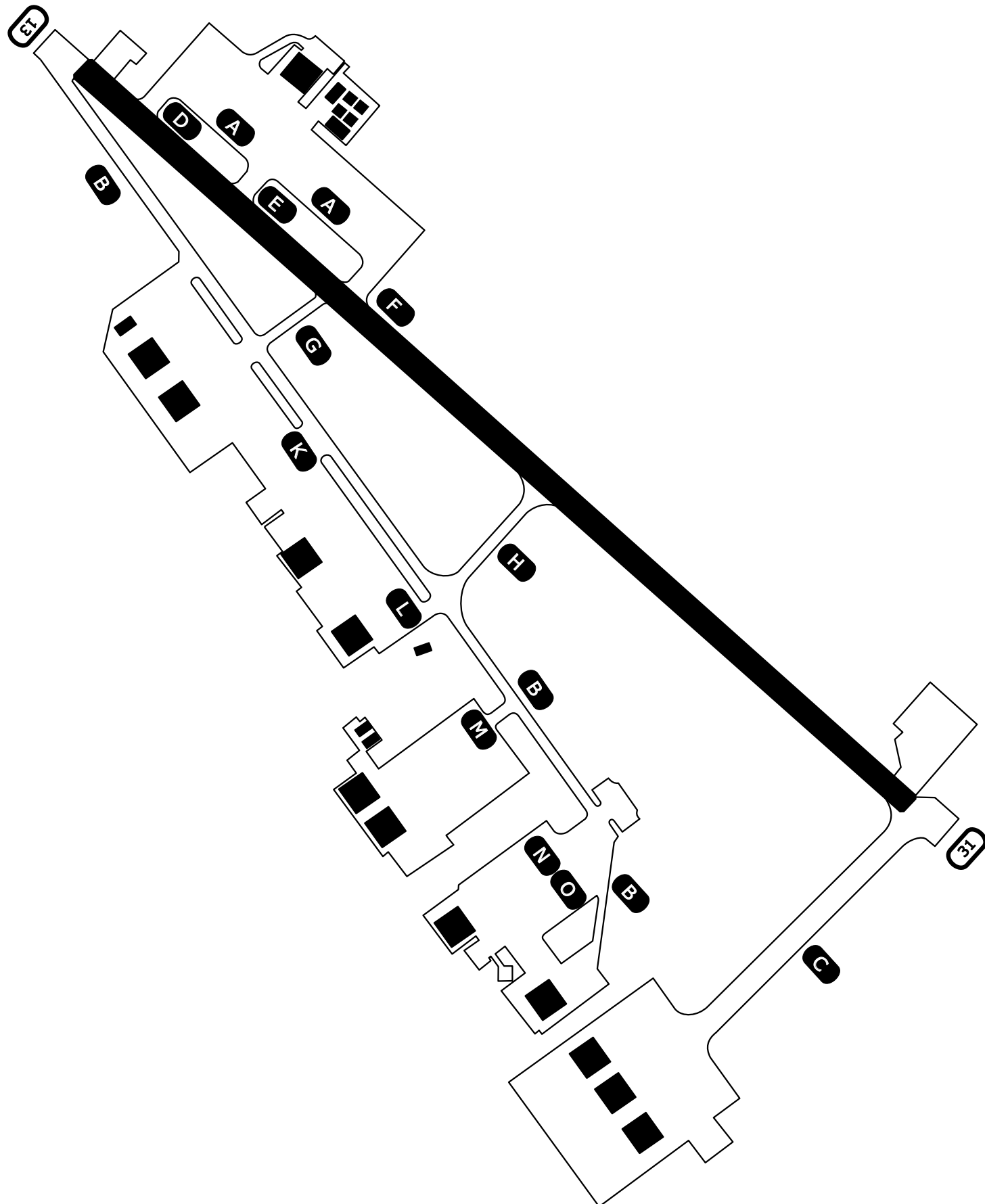
NAVAIDS

Id	Name	Channel	Position	Elevation
DAN	Incirlik	21	N37 00.950 E035 26.883	243
AKR	Akrotiri	107	N34 34.765 E032 57.769	147
PHA	Paphos	79	N34 42.997 E032 28.963	35
RMD	Ramat David	84	N32 39.892 E035 11.265	136
OS66	Kuweires Military Aviation Institute	36	N36 11.362 E037 34.226	1200

Ground Chart Airport Diagram

Amman, Jordan

King Abdulla II. AFB (OJKA)



"Sunshine Tower" : 118.0MHz
"Sunshine Ground" : 121.9MHz

RWY 13/31 : TORA+LDA 7000ft
Elev 2291

NOT AVAILABLE

NOT AVAILABLE

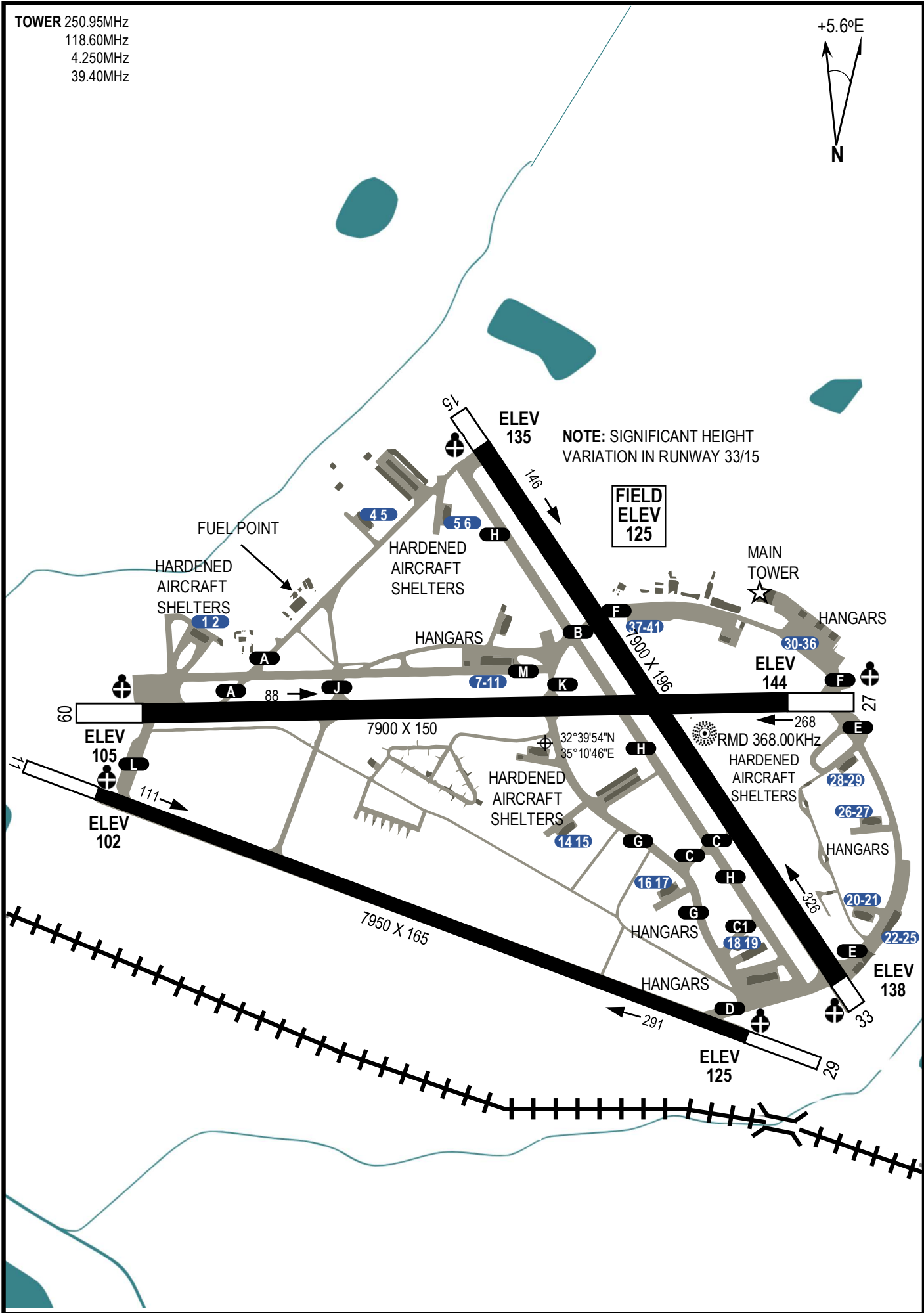
NOT AVAILABLE

TOWER 250.95MHz
118.60MHz
4.250MHz
39.40MHz



DCS SYRIA EFFECTIVE: 19 AUG 2020

DCS SYRIA EFFECTIVE: 19 AUG 2020



NOTE: SIGNIFICANT HEIGHT VARIATION IN RUNWAY 33/15

FIELD ELEV 125