

MISSION DATA CARD

OPORD		Callsign		Mission		Date/Time		
3034/2024		Edelweiss 1		DEAD		251840JUN24		
Task						Freq		
AO						264.15		
Departure				Recovery				
RWY10 SID				RWY10 VFR				
#	Callsign		Pilot		IFF	TCN	LSR	NET
-1	Edelweiss 1-1		Snowbird		1711	11Y	1711	

LOADOUT

A/A	2xA120C, 2xA9X				GUN	100% HEI-T	
A/G	4xA88C				CHF	120	
POD	HTS, TGP				FLR	0	
TKS	FT300				FUEL	100%	

TOLD

	Takeoff	Target	Joker	Bingo	Land
FUEL	9166				

AIRBASES

	Name	TCN	ATIS	GND	TWR	RWY	Elev	ILS
Dep	Akrotiri AFB	107X	288.2	240.1	339.85	28	62	109.7
Arr	Akrotiri AFB	107X	288.2	240.1	339.85	28	62	109.7

SUPPORT**Tanker**

Callsign	TCN	Freq	ALT	TAS
SHELL 3	93Y	278.75	FL170	215
Pos	SHELL3: (N3436 E03419)			

RADIO CHANNELS

#	Freq	Name
1		Flight/Squadron specific
2	288.2	Akrotiri ATIS
3	240.1	Akrotiri Ground
4	339.85	Aktrotiri Tower
5	335.05	Akrotiri Approach
6	360.1	Incirlik Tower
7	371.35	Incirlik Ground
8	377.475	Incirlik ATIS
9		No Preset
10	127.3	Paphos ATIS
11	353.8	Paphos Tower
12	304.0	CVN-73 George Washington
13	302.0	LHA-1 Tarawa
14	259.0	CV-59 Forrestal
15		No Preset
16	377.8	Overlord
17	265.0	KC-135 Texaco-1 medium/slow
18	319.8	KC-135 Arco-1
19	360.8	KC-135MPRS Arco-2
20	256.0	S-3B Recovery Tanker

RAMROD

0	1	2	3	4	5	6	7	8	9
M	A	Y	F	L	O	W	E	R	S

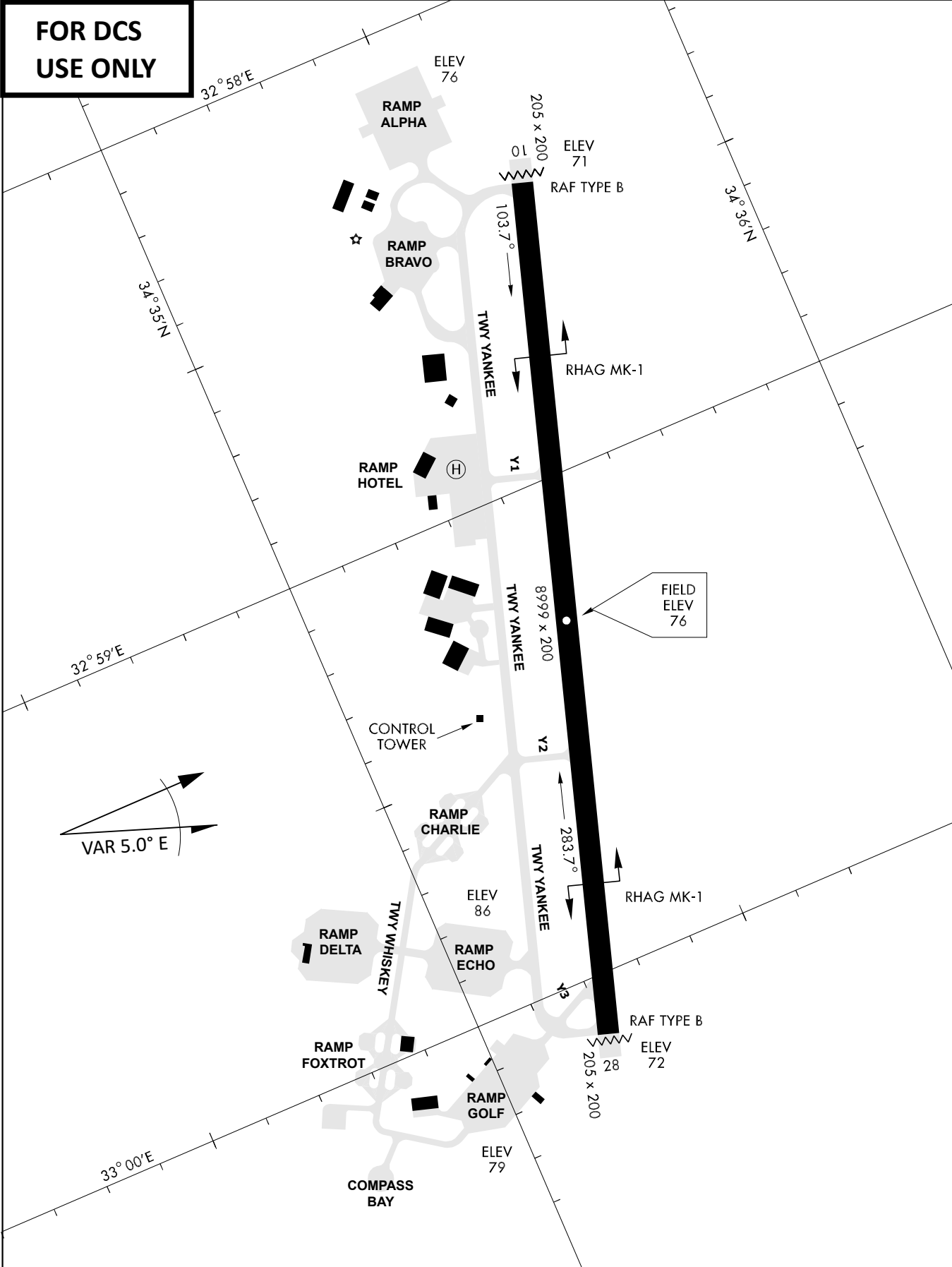
KTC 1400 C

	0	1	2	3	4	5	6	7	8	9
A	OJGY	VCF	DBL	TN	QR	MXH	US	WK	PE	IA
B	FAPC	NOW	IKU	BT	HV	QJX	GM	SD	ER	YL
C	VMTE	YHN	CPU	OJ	SA	RFL	DK	XI	QG	WB
D	DWPF	NHI	JSM	TC	GU	VXB	AO	KE	QL	YR
E	USNF	RJT	YCI	BH	DX	EKL	QM	AW	VG	OP
F	XKWN	FDJ	CQP	OL	EV	BSU	TH	YA	MR	IG
G	MVBJ	YOK	RWI	PA	HS	UCQ	DL	XT	GF	NE
H	PJYQ	REX	ADO	LC	MV	UFK	IN	BH	WG	ST
I	ACOU	TIK	LMS	RB	JG	DFW	PE	YH	NX	VQ
J	UKVM	ISH	ANE	DO	YR	FBW	LQ	GT	CJ	XP
K	WOIF	VUR	JND	SQ	GC	EXY	PH	ML	TK	BA
L	TLCD	HRJ	YEB	MU	SO	VQA	NG	PX	IW	FK
M	JXOY	ICK	FDH	GB	WQ	UVL	MT	PR	NA	SE
N	SMGD	OQY	XRI	AH	UK	EWJ	VF	BN	TL	PC
O	HXJT	IWP	NUG	LQ	VS	MEO	FB	KA	DY	CR
P	SBAR	VFQ	IKN	YT	HW	DEJ	OG	MC	PX	UL
Q	OGWJ	PYU	NBV	EH	LC	AKR	FM	XD	IT	SQ
R	TWYU	VBN	QGP	DI	OX	MHC	EJ	LA	SF	RK
S	GFMC	NVI	EXY	HS	BL	DTR	JW	QP	OU	AK
T	HENW	KBX	RMO	QT	IV	DFJ	SY	CP	LU	GA
U	RMEI	NCY	UJT	QA	FD	WKX	VG	HP	BL	OS
V	UAWE	BQX	SLF	VY	NP	THD	RI	OK	MG	JC
W	UXKM	PHI	SLT	DY	GQ	FOW	JB	EA	RV	NC
X	KXDR	SHW	ECT	PA	JY	GIN	MU	QV	FO	LB
Y	GICY	DME	XAB	LU	WN	QJH	VR	KS	FO	PT

NAVAIDS

Id	Name	Channel	Position	Elevation
DAN	Incirlik	21	N37 00.950 E035 26.883	243
AKR	Akrotiri	107	N34 34.765 E032 57.769	147
PHA	Paphos	79	N34 42.997 E032 28.963	35
RMD	Ramat David	84	N32 39.892 E035 11.265	136
OS66	Kuweires Military Aviation Institute	36	N36 11.362 E037 34.226	1200

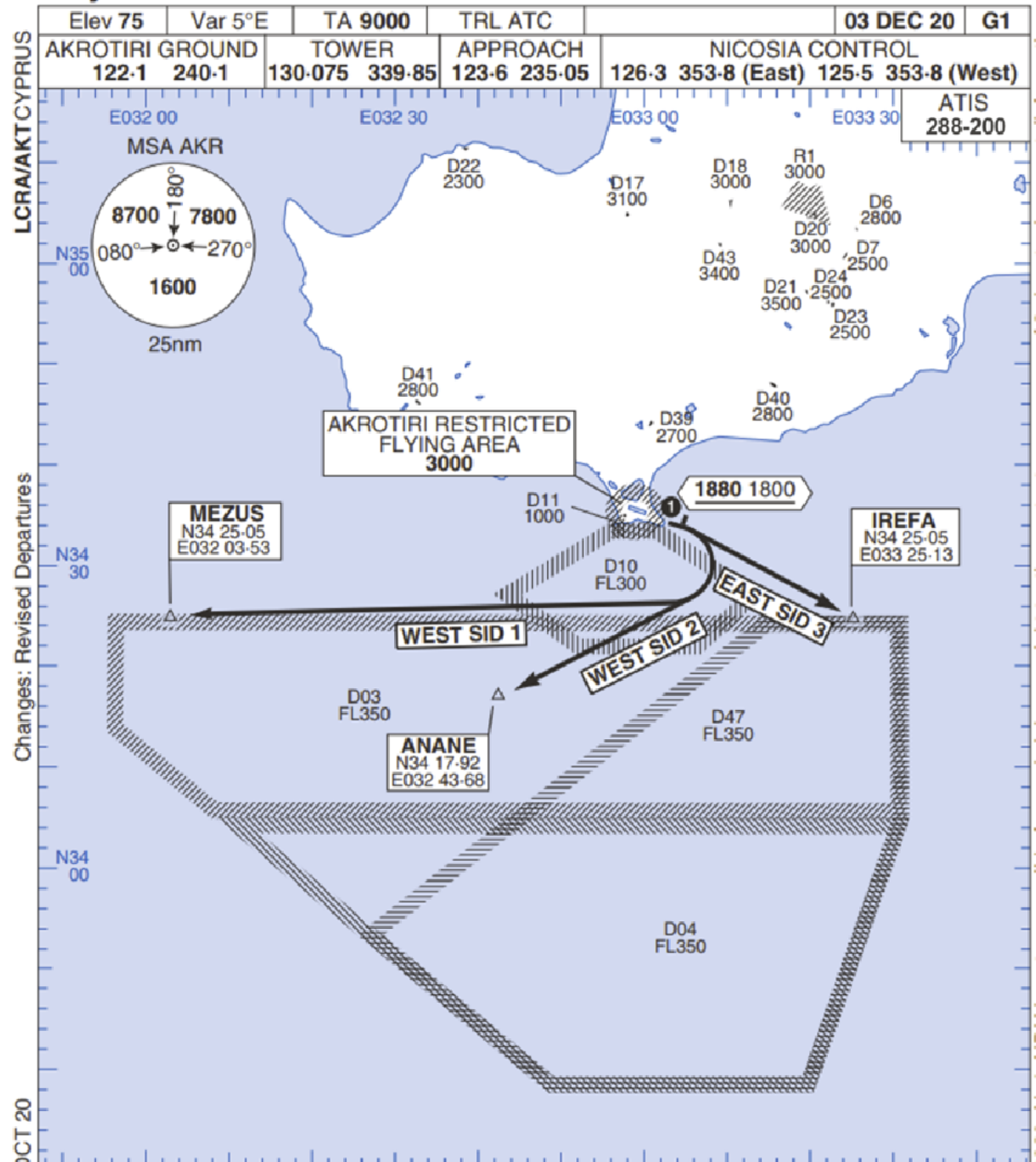
**FOR DCS
 USE ONLY**



ATIS	AKROTIRI GND	AKROTIRI TWR	OVERLORD CONTROL	TACAN	FIELD ELEVATION
288.20 MHz	240.10 122.10	339.85 130.075	377.8	AKR 107X	75 [ft] 23 [m]

Rwy 10 OMNIDIRECTIONAL DEPARTURES

AKROTIRI



LCRA/AKTCYPRUS

Changes: Revised Departures

No1 AIDU Last Amended 06 OCT 20

© UK MOD Crown Copyright 2020. No1 AIDU is not responsible for, and claims no right to, the content or accuracy of 3rd party documents/information.

- ① Minimum climb gradient 7% to 1880 1800 for obstacle and operational purposes.
- 2. No turns before DER.
- 3. Turns to north of Rwy **prohibited**.
- 4. Acft unable to locate MEZUS/ANANE/IREFA should request radar vectors from ATC.

SID	RWY	ROUTEING (Including Mnm Noise Routes)
WEST SID 1	10 103°M	Ahead on Rwy Tr to 1880 1800, then right direct to MEZUS. SID terminates at 9000.
WEST SID 2		Ahead on Rwy Tr to 1880 1800, then right direct to ANANE. SID terminates at 9000.
EAST SID 3		Ahead on Rwy Tr to 1880 1800 then right direct to IREFA. SID terminates at 9000.

ATIS

288.20

AKROTIRI GROUND

240.10

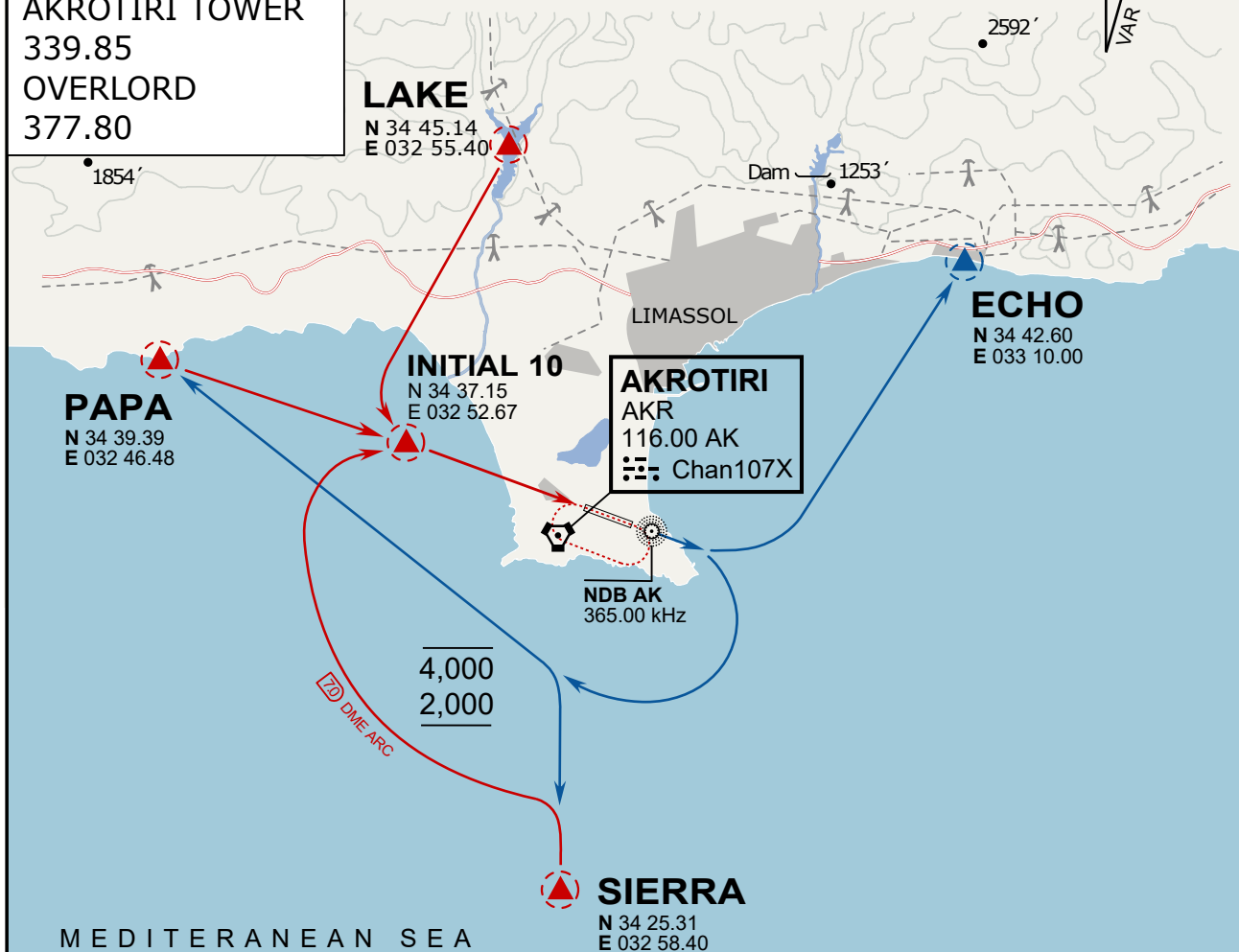
AKROTIRI TOWER

339.85

OVERLORD

377.80

NOT FOR CIVIL USE

CAUTION: If unable to comply
with restrictions advise ATC
prior to departure.

ARR / DEP ROUTE DESCRIPTION

ARRIVAL GENERAL

Pass Entry at 5.000' or below. Overhead Brake RWY 10: pass INITIAL 10 at 2.000' MSL.
Straight-in RWY 10 : pass INITIAL 1.500' or below.

ARR RWY10 PAPA / LAKE: Direct initial.

ARR RWY10 SIERRA: Intercept ARC 7 of AKR to INITIAL 10.

ARR ECHO: no ENTRY.

DEPARTURE GENERAL

Pass Departure end of runway at 1.000' AGL or below. Keep RWY heading until coastline.

DEP RWY10 ECHO: Direct EXIT.

DEP RWY10 SIERRA: Climbing right turn, intercept R180 AKR to Sierra.

DEP RWY10 PAPA: Climbing right turn until R180 AKR, then direct Papa

DEP LAKE: no EXIT.