

MISSION DATA CARD

| OPORD | | Callsign | | Mission | | Date/Time | |
|-----------|----------------|-----------|------|----------|------|-------------|--------|
| 3030/2024 | | Monster 1 | | CAS | | 272001JUN24 | |
| Task | CAS | | | | | | Freq |
| AO | ATO 1005 00B16 | | | | | | 132.15 |
| Departure | | | | Recovery | | | |
| none | | | | none | | | |
| # | Callsign | Pilot | IFF | TCN | LSR | NET | |
| -1 | Monster 1-1 | G-Rex | 1411 | 1Y | 1611 | 21/01 | |
| -2 | Monster 1-2 | Lenzi | 1412 | 64Y | 1612 | 21/02 | |

LOADOUT

| | | | | | | |
|-----|-----------------------|--|--|--|------|---------|
| A/A | 2xA9M | | | | GUN | 100% CM |
| A/G | 7M282L, 4xA65D, 4xG12 | | | | CHF | 120 |
| POD | A184L, TGP | | | | FLR | 360 |
| TKS | | | | | FUEL | 100% |

TOLD

| | | | | | |
|------|---------|--------|-------|-------|------|
| | Takeoff | Target | Joker | Bingo | Land |
| FUEL | 11087 | | | | |

AIRBASES

| | Name | TCN | ATIS | GND | TWR | RWY | Elev | ILS |
|-----|---------------------|-----|-------|-------|-------|-----|------|-----|
| Dep | King Abulla II. AFB | | | 121.9 | 118.0 | 31 | 2291 | |
| Arr | King Abulla II. AFB | | | 121.9 | 118.0 | 31 | 2291 | |
| Div | Ramat David AFB | | 118.4 | | 118.6 | 27 | 125 | |

FLIGHTPLAN

| # | Name | Navaid/Coords/DME | ALT | TOT |
|---|------------|------------------------|-----|-----|
| 1 | CP | N33 11.787 E035 46.905 | | |
| 2 | hold | N33 20.735 E035 57.364 | | |
| 3 | Echo Point | N33 31.046 E036 15.109 | | |
| 4 | TRP1 | N33 33 E036 15.085 | | |
| 5 | TRP2 | N33 30.371 E036 12.084 | | |
| 6 | TRP3 | N33 28.986 E036 13.607 | | |
| 7 | TRP4 | N33 29.203 E036 08.267 | | |
| 8 | TRP5 | N33 27.470 E036 07.663 | | |
| 9 | TRP6 | N33 27.375 E036 05.201 | | |

COMMS

| Radio | Usage |
|-------|----------------------------------|
| 1 | 121.9 - 118 - 132.15 -118 -121.9 |
| 2 | 16 |
| 3 | 32.15 - 32.00 |

NOTES

121.9 Sunshine Ground

118 Sunshine Tower

Fury4 (FAC(A) Laser 1641)

OTHER FLIGHTS

| Callsign | Mission | Airframe | Freq | TCN | Grpld | Laser |
|-------------|------------------|------------|------------------------|-------|-------|-------|
| Tiger 1 | Strike | 3x F/A-18C | 261.15 | 1/64 | 1 | 155X |
| AO | ivo DMSK / 25B28 | Task | ATO1001 / PKG-A | | | |
| Raptor 1 | SEAD | 4x F-16C | 134.0 | 1/64 | | 162X |
| AO | Al-Dumayr | Task | ATO 1003 | | | |
| Raptor 2 | DEAD | 4x F-16C | 134.5 | 1/64 | | 162X |
| AO | Damaskus | Task | ATO 1002 | | | |
| Fury 4 | FAC(A) | 1x A-10C | 32.0 | 1/64 | 32 | 164X |
| AO | ATO 1005 20B21 | Task | FAC(A) | | | |
| T-Rex 2 | Strike | 4x A-10C | 132.25 | 1/64 | 25 | 165X |
| AO | ATO 1005 00B16 | Task | Strike Marj | | | |
| Nazgul 6 | Training | 4x F-15E | 262.45 | 1/64 | | 156X |
| AO | Al-Dumayr | Task | ATO 1003 30B40 | | | |
| Misty 5 | Air Assault | 4x AH-64D | 133.5 | 1/64 | | 144X |
| AO | ATO 1005 | Task | Escort | | | |
| Dustoff* 1 | Transport | 1x UH-1H | 32.0 | 1/64 | | 170X |
| AO | | Task | air assault | | | |
| Raptor 3 | DEAD | 1x F-16C | 134.0 | 1/64 | | 162X |
| AO | Al-Dumayr | Task | LOADOUT DEAD | | | |
| Hawg 3 | Strike | 3x A-10C | 232.85 | 29/92 | 33 | 166X |
| AO | ATO 1004 00B16 | Task | ATO 1004 / Strike Marj | | | |
| Edelweiss 6 | Training | 2x F/A-18C | 134.65 | 1/64 | 40 | 166X |
| AO | | Task | | | | |
| Panther 5 | Escort | 2x F/A-18C | 261.15 | 1/64 | 1 | 155X |
| AO | ivo DMSK / 25B28 | Task | ATO1001 / Escort | | | |

RADIO CHANNELS

| # | Freq | Name |
|----|---------|-----------------------------|
| 1 | | Flight/Squadron specific |
| 2 | 288.2 | Akrotiri ATIS |
| 3 | 240.1 | Akrotiri Ground |
| 4 | 339.85 | Aktrotiri Tower |
| 5 | 335.05 | Akrotiri Approach |
| 6 | 360.1 | Incirlik Tower |
| 7 | 371.35 | Incirlik Ground |
| 8 | 377.475 | Incirlik ATIS |
| 9 | | No Preset |
| 10 | 127.3 | Paphos ATIS |
| 11 | 353.8 | Paphos Tower |
| 12 | 304.0 | CVN-73 George Washington |
| 13 | 302.0 | LHA-1 Tarawa |
| 14 | 259.0 | CV-59 Forrestal |
| 15 | | No Preset |
| 16 | 377.8 | Overlord |
| 17 | 265.0 | KC-135 Texaco-1 medium/slow |
| 18 | 319.8 | KC-135 Arco-1 |
| 19 | 360.8 | KC-135MPRS Arco-2 |
| 20 | 256.0 | S-3B Recovery Tanker |

RAMROD

| | | | | | | | | | |
|---|---|---|---|---|---|---|---|---|---|
| 0 | 1 | 2 | 3 | 4 | 5 | 6 | 7 | 8 | 9 |
| D | E | S | P | I | C | A | B | L | Y |

KTC 1400 C

| | 0 | 1 | 2 | 3 | 4 | 5 | 6 | 7 | 8 | 9 |
|---|------|-----|-----|----|----|-----|----|----|----|----|
| A | WKLO | JTP | FHU | QI | ND | MBX | YE | RV | CG | SA |
| B | QFEO | HRB | TJS | DK | CG | VAP | LW | UN | YX | IM |
| C | SFDI | YNQ | BLW | TP | VA | RXK | GJ | EC | MO | UH |
| D | DQJU | YGI | BTV | PA | FR | CMS | LE | OH | WK | NX |
| E | DSMA | FKN | IJL | WY | VT | UPR | XH | QE | OB | CG |
| F | RFOK | PLG | TDX | EI | HC | YWQ | SJ | MN | VU | AB |
| G | JAOB | WRG | KNV | HT | IS | FCL | QP | UX | DY | EM |
| H | GHUM | DCY | IOQ | WT | EJ | PNL | SF | XB | KA | RV |
| I | BSDN | VFH | KOQ | CA | XY | GLP | UE | RT | MI | WJ |
| J | CVGN | APW | FIH | ED | MU | LSX | JT | OQ | KB | YR |
| K | YSNW | VRB | JKC | PG | QM | ELO | TF | UX | IH | DA |
| L | TWJO | APS | LFQ | MH | CE | VKY | XN | IB | GU | RD |
| M | QJSY | MUO | PRI | LB | AE | WFT | HD | XC | VN | KG |
| N | EMLX | FOP | TYV | QJ | ND | GCB | KI | UH | WA | RS |
| O | TNFD | HVL | ASO | UP | KG | RJW | CB | XI | MQ | EY |
| P | OXSK | RUL | IGJ | VM | EF | YDQ | AN | BP | CT | WH |
| Q | YITU | MGK | QEA | LO | JB | SRH | CD | FW | NX | PV |
| R | FTHI | DXK | RCE | YB | UJ | SPO | MW | AV | NG | LQ |
| S | KVQS | BGE | XAM | PD | WL | CUH | IN | JO | TF | YR |
| T | TCID | AHM | VNS | PJ | BY | XQK | LR | UF | EG | WO |
| U | KVON | UFP | DGC | EW | JX | IYT | AH | BQ | SM | LR |
| V | KSRQ | LYD | PUM | NB | EF | VHW | TC | JG | AI | XO |
| W | DXGI | FCP | MNQ | EL | KV | OAW | YU | RJ | TB | SH |
| X | DXJH | CQP | TIF | NR | LB | SKY | OW | VU | EA | MG |
| Y | IXOY | FLD | QUH | BG | WA | VJN | PT | MC | RE | KS |

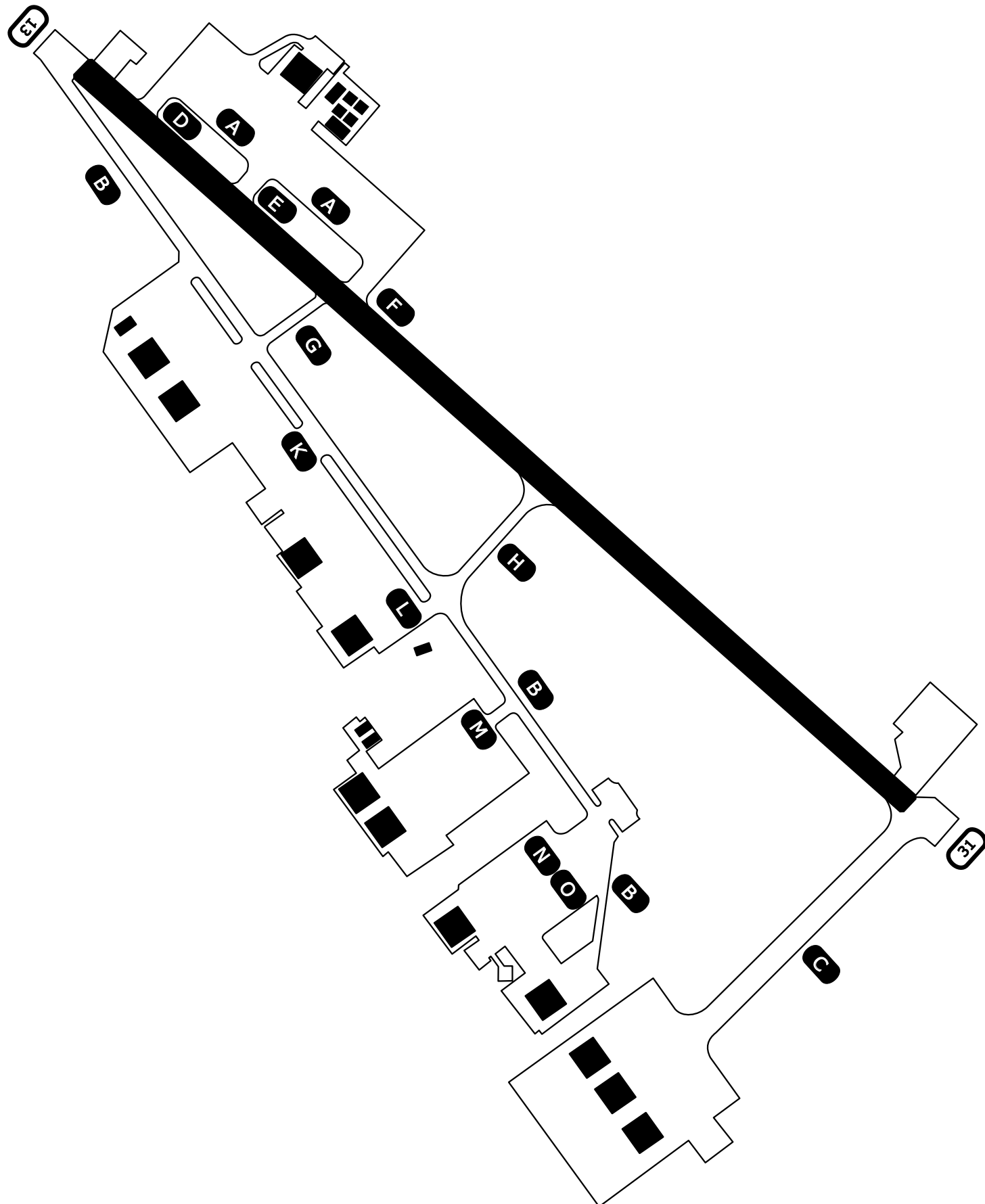
NAVAIDS

| Id | Name | Channel | Position | Elevation |
|-----------|---|----------------|------------------------|------------------|
| DAN | Incirlik | 21 | N37 00.950 E035 26.883 | 243 |
| AKR | Akrotiri | 107 | N34 34.765 E032 57.769 | 147 |
| PHA | Paphos | 79 | N34 42.997 E032 28.963 | 35 |
| RMD | Ramat David | 84 | N32 39.892 E035 11.265 | 136 |
| OS66 | Kuweires Military Aviation Institute | 36 | N36 11.362 E037 34.226 | 1200 |

Ground Chart Airport Diagram

Amman, Jordan

King Abdulla II. AFB (OJKA)



"Sunshine Tower" : 118.0MHz
"Sunshine Ground" : 121.9MHz

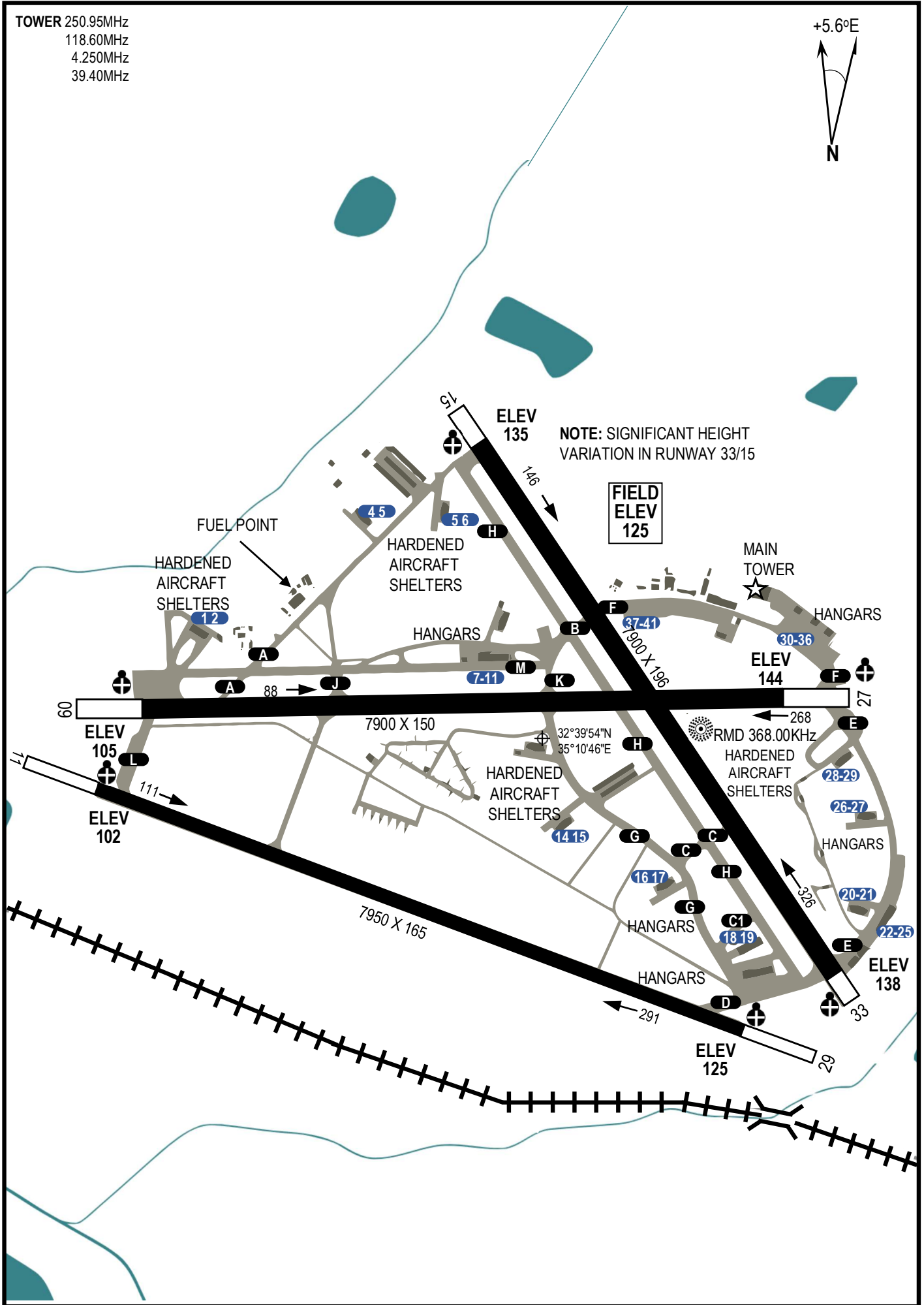
RWY 13/31 : TORA+LDA 7000ft
Elev 2291

NOT AVAILABLE

NOT AVAILABLE

NOT AVAILABLE

TOWER 250.95MHz
118.60MHz
4.250MHz
39.40MHz



DCS SYRIA EFFECTIVE: 19 AUG 2020

DCS SYRIA EFFECTIVE: 19 AUG 2020