

MISSION DATA CARD

OPORD		Callsign		Mission		Date/Time		
3027/2024		Balrog 7		CAS		242000JUN24		
Task	CAS Workshop					Freq		
AO	R76					262.45		
Departure				Recovery				
FYTTR THREE				STRYK				
#	Callsign		Pilot		IFF	TCN	LSR	NET
-1	Balrog 7-1		Razorback/TaB		6001	1Y	1631	

LOADOUT

A/A	2xA9M, 2xA120C				GUN	100% SAPHEI	
A/G	4xG12, 3xG54				CHF	120	
POD	TGT, NAV				FLR	60	
TKS					FUEL	100%	

TOLD

	Takeoff	Target	Joker	Bingo	Land
FUEL	22588				

AIRBASES

	Name	TCN	ATIS	GND	TWR	RWY	Elev	ILS
Dep	Nellis AFB	12X	270.1	275.8	327.0	21L	1850	109.1
Arr	Nellis AFB	12X	270.1	275.8	327.0	21L	1850	109.1

FLIGHTPLAN

#	Name	Navaid/Coords/DME	ALT	TOT
1	FYTTR	LSV 12X 269/33 (N36 21.440 W115 41.470)	14000	
2	Range 64E	N36 37.697 W115 39.319	5000	
3	IP	N36 36 W116 16		
4	ECHO	N37 37 W117 17		
5	NW Container	N37 28.049 W115 59.961	20000	
6	NE Container	N37 28.049 W115 34.974	20000	
7	SE Container	N37 06.116 W115 34.912	20000	
8	SW Container	N37 06.067 W116 00.023	20000	
9	NIXON	LSV 12X 292/30 (N36 32.010 W115 32.250)	10000	
10	STRYK	LSV 12X 282/26 (N36 25.620 W115 30.700)	9500	
11	GASS PEAK	LSV 12X 309/12 (N36 24.140 W115 10.660)	8500	
12	APEX	LSV 12X 027/09 (N36 21.580 W114 54.340)	4500	
13	PHINN	N36 18.427 W114 57.408	4000	

OTHER FLIGHTS

Callsign	Mission	Airframe	Freq	TCN	Grpld	Laser
Monster 2	Training	4x A-10C	132.25	1/64	25	165X
	AO	Range 63	Task	CAS TRAINING		
Nazgul 6	CAS	4x F-15E	262.45	1/64		156X
	AO	R76	Task	CAS Workshop		

RADIO CHANNELS

#	Freq	Name
1		Flight/Squadron specific
2	289.4	Nellis Clearance Delivery
3	275.8	Nellis Ground
4	327.0	Nellis Tower
5	385.4	Nellis Approach/Departure West
6	273.55	Nellis Approach/Departure East
7	317.525	Nellis Control -- Sally
8	254.4	Nellis Control-- Lee
9	305.6	SOF Bullseye
10	343.725	EMERGENCY SINGLE FRQ
11	270.1	Nellis ATIS
12	360.625	Creech AFB Tower
13	250.1	HAVE QUICK 13
14	251.1	HAVE QUICK 14
15	252.1	HAVE QUICK 15
16	377.8	Blackjack
17	265.0	KC-135 AR-641A
18	360.8	KC-135MPRS AR-635
19	319.8	KC-135MPRS AR-625
20	300.05	KC-135 AR-231V

RAMROD

0	1	2	3	4	5	6	7	8	9
L	A	N	G	U	I	S	H	E	D

KTC 1400 C

	0	1	2	3	4	5	6	7	8	9
A	PMRV	ULY	QNB	DO	WT	GEF	JS	IC	HX	AK
B	HGJQ	UAL	XCW	RK	BM	FDI	PS	YO	VN	TE
C	CJFK	UIX	BQM	LN	WT	RGS	AP	EO	DH	YV
D	HYDK	CJI	GME	TS	QO	PRU	WB	XF	VL	NA
E	XPSB	JVH	WAI	FR	KQ	MYE	GO	DT	UL	NC
F	PWMI	YTX	VCL	NK	BF	SDR	QE	AH	JG	OU
G	BNJA	WLD	REK	XU	VM	IHF	ST	OP	YC	GQ
H	BQVP	YDM	JRN	IO	FE	GWK	HS	LC	AX	TU
I	NXJT	OPL	WMC	DK	HR	QGS	YA	BU	EF	IV
J	JGTL	FDM	RIP	XA	BY	OQS	NK	VH	UW	EC
K	SLHY	GEF	VOR	AQ	ID	UXM	CB	KN	TP	WJ
L	MNFS	GUX	TBK	CH	RV	YOD	PA	WJ	LE	QI
M	JNVO	ITL	XCR	BG	FK	UQW	MS	PE	AH	DY
N	AQJH	MLO	NBS	EK	VU	YDW	IX	GR	PT	CF
O	MEJG	FWD	YQI	AT	CN	LXR	SH	BV	OP	KU
P	PQGN	DCV	IBT	WL	EK	XFY	AO	JM	SH	RU
Q	CAHP	YMX	ISE	DT	NW	UQL	KO	VB	GF	RJ
R	BIGP	XYW	LRE	HD	KA	QTO	CM	VF	JN	US
S	JFTW	IXB	QGO	UC	RD	PEN	VY	MA	SH	KL
T	VGNU	PBY	IAW	HQ	CE	RLD	KT	JS	XF	OM
U	GLEO	PXA	YRC	WN	UD	MBS	KV	IJ	QH	FT
V	CFMH	SVP	JWD	NI	AY	OEQ	RU	LK	BG	XT
W	RELJ	COF	VGM	TX	YP	KBW	UA	DS	HI	QN
X	FXDH	BAU	MKN	QR	WP	YGI	CV	SJ	LT	OE
Y	SIWA	RBC	HGE	OF	KV	DQN	XM	LU	JP	YT

NAVAIDS

Id	Name	Channel	Position	Elevation
BCE	Bryce Canyon	75	N3741.35 W11218.23	9040
BIH	Bishop	33	N3722.62 W11821.99	4114
BLD	Boulder	114	N3559.75 W11451.82	3650
BTY	Beatty	94	N3648.54 W11644.86	2925
CDC	Cedar City	120	N3747.24 W11304.90	5463
DAG	Daggett	79	N3457.75 W11634.69	1760
EED	Needles	99	N3445.96 W11428.43	650
GFS	Goffs	91	N3507.87 W11510.59	4019
GRL	Groom Lake	18	N3713.91 W11548.16	4475
HEC	Hector	74	N3447.83 W11627.78	1854
ILC	Wilson Creek	110	N3815.02 W11423.65	9318
INS	Creech AFB	87	N3635.20 W11540.12	3101
LAS	McCarran Intl	116	N3604.78 W11509.59	2142
LSV	Nellis	12	N3614.68 W11501.50	1864
MLF	Milford	58	N3821.62 W11300.79	4977
MMM	Mormon Mesa	90	N3646.16 W11416.65	2120
MVA	Mina	98	N3833.92 W11801.97	7860
OAL	Coale Dale	124	N3800.20 W11746.23	4800
PGS	Peach Springs	57	N3537.48 W11332.67	4754
TPH	Tonopah Muni	119	N3801.84 W11702.01	5330
TQQ	Silverbow	77	N3748.00 W11647.00	5500
UTI	St George	23	N3705.29 W11335.53	2871



PAR	RWY	CAT	MINIMA	ARP	ELEV	Scale
	21L	A B D E	2057 - 0.8 200 (200-0.8/1.6) GS 3°	36° 14.060° N 115° 01.058° W	1857 [ft] 566 [m]	0 300 600 900 1200 1500 [m] 0 1000 2000 3000 4000 5000 [ft]
	3R	A B D E	2057 - 0.8 200 (200-0.8/1.6) GS 3°			
	21R	A C D E	2257 - 1.2 350 (350-1.2/1.6)			
	3L	A C D E	2257 - 1.2 350 (350-1.2/1.6)			

RWY	TORA	TODA	ASDA	LDA	PSN	THR	ALS
21L	10051 [ft] 3063 [m]	11051 [ft] 3368 [m]	11051 [ft] 3368 [m]	10051 [ft] 3063 [m]	36°14.043' N	115°01.018' W	⊕
3R	10120 [ft] 3084 [m]	11120 [ft] 3398 [m]	11120 [ft] 3398 [m]	10120 [ft] 3084 [m]	36°13.029' N	115°02.038' W	

ATIS	NELLIS GROUND	NELLIS TOWER	NELLIS CONTROL	TACAN	ILS RWY 21L	NELLIS EAST	NELLIS WEST
270.100 MHz	275.800 121.800	327.000 132.55	317.525	LSV 12X	109.10 Mhz	384.400	385.000

FYTTR THREE DEPARTURE IFR CHART | VALID 2014 LAS VEGAS, NEVADA

ATIS
270.100
NELLIS GROUND
275.800
NELLIS TOWER
327.000
NELLIS CONTROL
317.525
NELLIS DEP/APP EAST
384.400
BLACKJACK
377.800



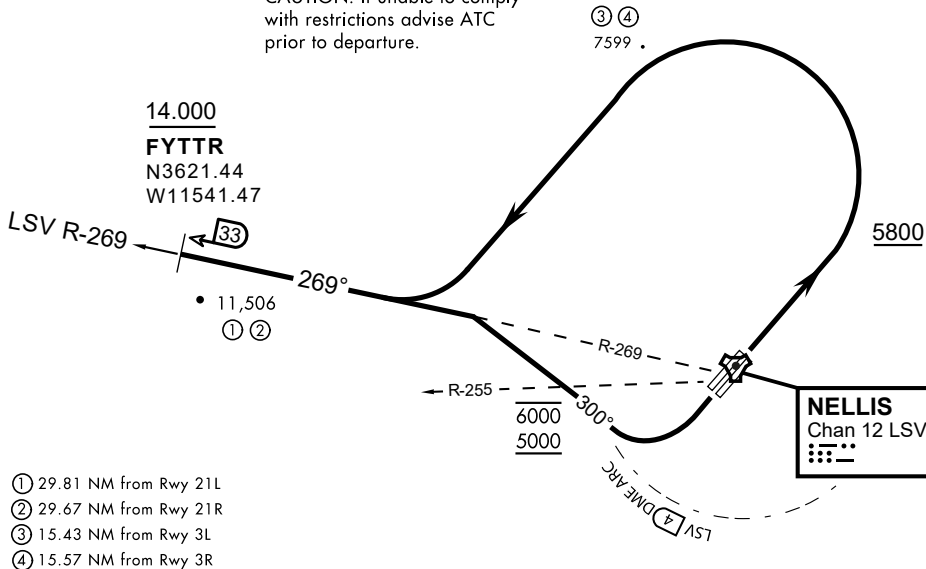
Rwy	Knots	60	120	180	240	300	360
3L (a)	V/V(fpm)	394	788	1182	1576	1970	2364
3R (a)	V/V(fpm)	392	784	1176	1568	1960	2352
21L (b)	V/V(fpm)	388	776	1164	1552	1940	2328
21R (b)	V/V(fpm)	390	780	1170	1560	1950	2340

Minimum Climb Rate

(a) to 9300

(b) to 13 500

CAUTION: If unable to comply with restrictions advise ATC prior to departure.



- (1) 29.81 NM from Rwy 21L
- (2) 29.67 NM from Rwy 21R
- (3) 15.43 NM from Rwy 3L
- (4) 15.57 NM from Rwy 3R

DEPARTURE ROUTE DESCRIPTION

TAKEOFF RWY 3L/R

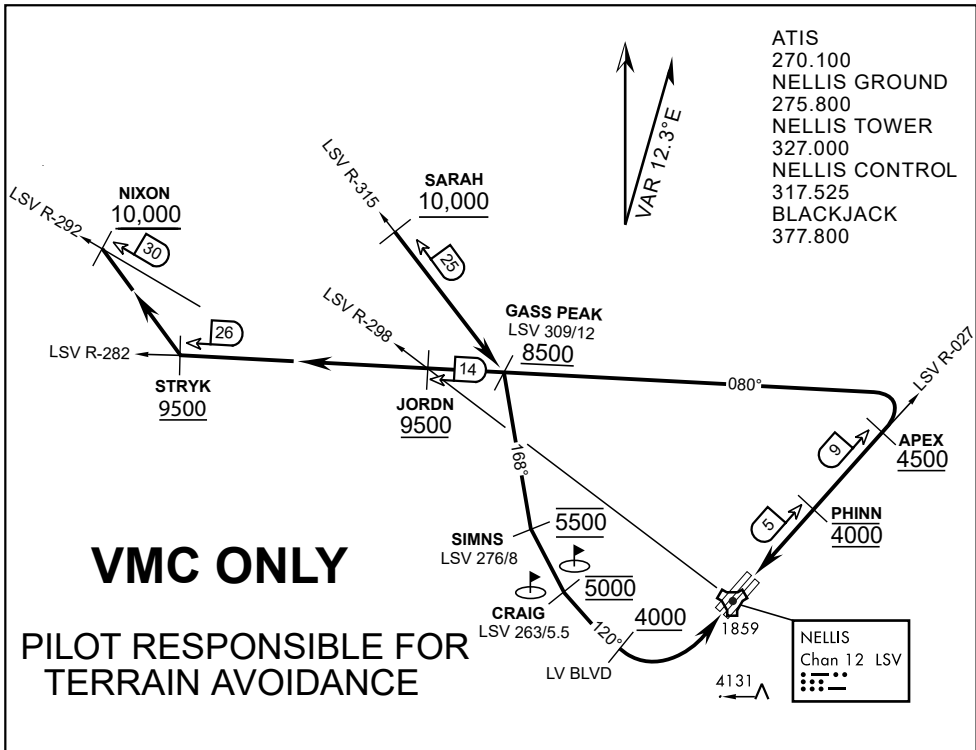
- Fly runway heading until reaching 5,800'.
- Then climbing left turn to intercept LSV TACAN R-269 outbound.
- Cross FYTTR at or above 14,000' or as assigned, then via assigned route.

TAKEOFF RWY 21L/21R

- Turn right to intercept LSV TACAN R-269 outbound.
- Remain within LSV 4 DME until joining LSV R-269
- Cross R-255 between 5,000' and 6,000'.
- Cross FYTTR at or above 14,000' or as assigned, then via assigned route.

NOISE ABATEMENT PROCEDURES:

Fly according Nellis Noise Abatement instructions as published



VMC ONLY
PILOT RESPONSIBLE FOR TERRAIN AVOIDANCE

APPROACH ROUTE DESCRIPTION

APPROACH RWY 3L/R

Cross STRYK at or above 9,500' MSL, proceed direct GASS PEAK. Cross JORDN at or above 9,500' MSL, cross GASS PEAK at or above 8,500' MSL. Proceed direct SIMNS and cross at 5,500' MSL. Cross Las Vegas Blvd at or above 4,000' MSL then to 3,500' MSL for Initial. Remain within 4 DME if LSV on turn to final.

VFR STRAIGHT-IN RWY 3L/R

Depart CRAIG & descend to be at 3,000' MSL by Las Vegas Blvd. Do not descend below 3,000' MSL until within 5 DME of LSV or 4 NM of the runway on turn to final.

APPROACH RWY 21L/R

Cross STRYK at or above 9,500' MSL, proceed direct GASS PEAK. Cross JORDN at or above 9,500' MSL, cross GASS PEAK at or above 8,500' MSL. Cross APEX at or above 4,500' MSL then direct 5NM initial. Descend to cross PHINN at 4,000' MSL, Inside 5 NM descend to 3,500' MSL.

VFR STRAIGHT-IN RWY 21L/R

Cross APEX at 4,000' MSL. Descend to be at 3,000' MSL at PHINN. Descend to 3,000' MSL at LSV 027/5.

RANGE 63B EXIT

SOUTH: Via NIXON at or above 10,000' MSL, then direct STRYK.
EAST: Via SARAH at or above 10,000' MSL, then direct GASS PEAK.