

MISSION DATA CARD

| | | | | | | | | |
|-------------|--------------|----------|-------------|----------|------|-------------|------|-----|
| OPORD | | Callsign | | Mission | | Date/Time | | |
| 3026/2024 | | Nazgul 6 | | CAS | | 242000JUN24 | | |
| Task | CAS Workshop | | | | | Freq | | |
| AO | R76 | | | | | 262.45 | | |
| Departure | | | | Recovery | | | | |
| FYTTR THREE | | | | STRYK | | | | |
| # | Callsign | | Pilot | | IFF | TCN | LSR | NET |
| -1 | Nazgul 6-1 | | Striver/Uta | | 1161 | 1Y | 1561 | |
| -2 | Nazgul 6-2 | | Repsus | | 1162 | 64Y | 1562 | |

LOADOUT

| | | | | | | | |
|-----|----------------|--|--|--|------|------|--------|
| A/A | 2xA9M, 2xA120C | | | | GUN | 100% | SAPHEI |
| A/G | 4xG12, 3xG54 | | | | CHF | 120 | |
| POD | TGT, NAV | | | | FLR | 60 | |
| TKS | | | | | FUEL | 100% | |

TOLD

| | | | | | |
|------|---------|--------|-------|-------|------|
| | Takeoff | Target | Joker | Bingo | Land |
| FUEL | 22588 | | | | |

AIRBASES

| | | | | | | | | |
|-----|------------|-----|-------|-------|-------|-----|------|-------|
| | Name | TCN | ATIS | GND | TWR | RWY | Elev | ILS |
| Dep | Nellis AFB | 12X | 270.1 | 275.8 | 327.0 | 21L | 1850 | 109.1 |
| Arr | Nellis AFB | 12X | 270.1 | 275.8 | 327.0 | 21L | 1850 | 109.1 |

FLIGHTPLAN

| # | Name | Navaid/Coords/DME | ALT | TOT |
|----|--------------|---|-------|-----|
| 1 | FYTTR | LSV 12X 269/33 (N36 21.440 W115 41.470) | 14000 | |
| 2 | Range 64E | N36 37.697 W115 39.319 | 5000 | |
| 3 | IP | N36 36 W116 16 | | |
| 4 | ECHO | N37 37 W117 17 | | |
| 5 | NW Container | N37 28.049 W115 59.961 | 20000 | |
| 6 | NE Container | N37 28.049 W115 34.974 | 20000 | |
| 7 | SE Container | N37 06.116 W115 34.912 | 20000 | |
| 8 | SW Container | N37 06.067 W116 00.023 | 20000 | |
| 9 | NIXON | LSV 12X 292/30 (N36 32.010 W115 32.250) | 10000 | |
| 10 | STRYK | LSV 12X 282/26 (N36 25.620 W115 30.700) | 9500 | |
| 11 | GASS PEAK | LSV 12X 309/12 (N36 24.140 W115 10.660) | 8500 | |
| 12 | APEX | LSV 12X 027/09 (N36 21.580 W114 54.340) | 4500 | |
| 13 | PHINN | N36 18.427 W114 57.408 | 4000 | |

OTHER FLIGHTS

| Callsign | Mission | Airframe | Freq | TCN | Grpld | Laser |
|-----------|----------|----------|--------|--------------|-------|-------|
| Monster 2 | Training | 4x A-10C | 132.25 | 1/64 | 25 | 165X |
| | AO | Range 63 | Task | CAS TRAINING | | |
| Balrog 7 | CAS | 4x F-15E | 262.45 | 1/64 | | 163X |
| | AO | R76 | Task | CAS Workshop | | |

RADIO CHANNELS

| # | Freq | Name |
|----|---------|--------------------------------|
| 1 | | Flight/Squadron specific |
| 2 | 289.4 | Nellis Clearance Delivery |
| 3 | 275.8 | Nellis Ground |
| 4 | 327.0 | Nellis Tower |
| 5 | 385.4 | Nellis Approach/Departure West |
| 6 | 273.55 | Nellis Approach/Departure East |
| 7 | 317.525 | Nellis Control -- Sally |
| 8 | 254.4 | Nellis Control-- Lee |
| 9 | 305.6 | SOF Bullseye |
| 10 | 343.725 | EMERGENCY SINGLE FRQ |
| 11 | 270.1 | Nellis ATIS |
| 12 | 360.625 | Creech AFB Tower |
| 13 | 250.1 | HAVE QUICK 13 |
| 14 | 251.1 | HAVE QUICK 14 |
| 15 | 252.1 | HAVE QUICK 15 |
| 16 | 377.8 | Blackjack |
| 17 | 265.0 | KC-135 AR-641A |
| 18 | 360.8 | KC-135MPRS AR-635 |
| 19 | 319.8 | KC-135MPRS AR-625 |
| 20 | 300.05 | KC-135 AR-231V |

RAMROD

| | | | | | | | | | |
|---|---|---|---|---|---|---|---|---|---|
| 0 | 1 | 2 | 3 | 4 | 5 | 6 | 7 | 8 | 9 |
| L | A | N | G | U | I | S | H | E | D |

KTC 1400 C

| | 0 | 1 | 2 | 3 | 4 | 5 | 6 | 7 | 8 | 9 |
|---|------|-----|-----|----|----|-----|----|----|----|----|
| A | PMRV | ULY | QNB | DO | WT | GEF | JS | IC | HX | AK |
| B | HGJQ | UAL | XCW | RK | BM | FDI | PS | YO | VN | TE |
| C | CJFK | UIX | BQM | LN | WT | RGS | AP | EO | DH | YV |
| D | HYDK | CJI | GME | TS | QO | PRU | WB | XF | VL | NA |
| E | XPSB | JVH | WAI | FR | KQ | MYE | GO | DT | UL | NC |
| F | PWMI | YTX | VCL | NK | BF | SDR | QE | AH | JG | OU |
| G | BNJA | WLD | REK | XU | VM | IHF | ST | OP | YC | GQ |
| H | BQVP | YDM | JRN | IO | FE | GWK | HS | LC | AX | TU |
| I | NXJT | OPL | WMC | DK | HR | QGS | YA | BU | EF | IV |
| J | JGTL | FDM | RIP | XA | BY | OQS | NK | VH | UW | EC |
| K | SLHY | GEF | VOR | AQ | ID | UXM | CB | KN | TP | WJ |
| L | MNFS | GUX | TBK | CH | RV | YOD | PA | WJ | LE | QI |
| M | JNVO | ITL | XCR | BG | FK | UQW | MS | PE | AH | DY |
| N | AQJH | MLO | NBS | EK | VU | YDW | IX | GR | PT | CF |
| O | MEJG | FWD | YQI | AT | CN | LXR | SH | BV | OP | KU |
| P | PQGN | DCV | IBT | WL | EK | XFY | AO | JM | SH | RU |
| Q | CAHP | YMX | ISE | DT | NW | UQL | KO | VB | GF | RJ |
| R | BIGP | XYW | LRE | HD | KA | QTO | CM | VF | JN | US |
| S | JFTW | IXB | QGO | UC | RD | PEN | VY | MA | SH | KL |
| T | VGNU | PBY | IAW | HQ | CE | RLD | KT | JS | XF | OM |
| U | GLEO | PXA | YRC | WN | UD | MBS | KV | IJ | QH | FT |
| V | CFMH | SVP | JWD | NI | AY | OEQ | RU | LK | BG | XT |
| W | RELJ | COF | VGM | TX | YP | KBW | UA | DS | HI | QN |
| X | FXDH | BAU | MKN | QR | WP | YGI | CV | SJ | LT | OE |
| Y | SIWA | RBC | HGE | OF | KV | DQN | XM | LU | JP | YT |

NAVAIDS

| Id | Name | Channel | Position | Elevation |
|-----------|---------------|----------------|--------------------|------------------|
| BCE | Bryce Canyon | 75 | N3741.35 W11218.23 | 9040 |
| BIH | Bishop | 33 | N3722.62 W11821.99 | 4114 |
| BLD | Boulder | 114 | N3559.75 W11451.82 | 3650 |
| BTY | Beatty | 94 | N3648.54 W11644.86 | 2925 |
| CDC | Cedar City | 120 | N3747.24 W11304.90 | 5463 |
| DAG | Daggett | 79 | N3457.75 W11634.69 | 1760 |
| EED | Needles | 99 | N3445.96 W11428.43 | 650 |
| GFS | Goffs | 91 | N3507.87 W11510.59 | 4019 |
| GRL | Groom Lake | 18 | N3713.91 W11548.16 | 4475 |
| HEC | Hector | 74 | N3447.83 W11627.78 | 1854 |
| ILC | Wilson Creek | 110 | N3815.02 W11423.65 | 9318 |
| INS | Creech AFB | 87 | N3635.20 W11540.12 | 3101 |
| LAS | McCarran Intl | 116 | N3604.78 W11509.59 | 2142 |
| LSV | Nellis | 12 | N3614.68 W11501.50 | 1864 |
| MLF | Milford | 58 | N3821.62 W11300.79 | 4977 |
| MMM | Mormon Mesa | 90 | N3646.16 W11416.65 | 2120 |
| MVA | Mina | 98 | N3833.92 W11801.97 | 7860 |
| OAL | Coale Dale | 124 | N3800.20 W11746.23 | 4800 |
| PGS | Peach Springs | 57 | N3537.48 W11332.67 | 4754 |
| TPH | Tonopah Muni | 119 | N3801.84 W11702.01 | 5330 |
| TQQ | Silverbow | 77 | N3748.00 W11647.00 | 5500 |
| UTI | St George | 23 | N3705.29 W11335.53 | 2871 |



RWY 3L-21R
 PCN 46 R/C/W/T
 RWY 3R-21L
 PCN 51 R/C/W/T
 2017

| PAR | RWY | CAT | MINIMA | ARP | ELEV | Scale |
|-----|-----|---------|------------------------------------|---------------------------------|----------------------|--|
| | 21L | A B D E | 2057 - 0.8 200 (200-0.8/1.6) GS 3° | 36° 14.060° N 115° 01.058° W | 1857 [ft] 566 [m] | 0 300 600 900 1200 1500 [m] 0 1000 2000 3000 4000 5000 [ft] |
| | 3R | A B D E | 2057 - 0.8 200 (200-0.8/1.6) GS 3° | | | |
| | 21R | A C D E | 2257 - 1.2 350 (350-1.2/1.6) | | | |
| | 3L | A C D E | 2257 - 1.2 350 (350-1.2/1.6) | | | |

| RWY | TORA | TODA | ASDA | LDA | PSN | THR | ALS |
|-----|---------------------|---------------------|---------------------|---------------------|--------------|---------------|-----|
| 21L | 10051 [ft] 3063 [m] | 11051 [ft] 3368 [m] | 11051 [ft] 3368 [m] | 10051 [ft] 3063 [m] | 36°14.043' N | 115°01.018' W | ⊕ |
| 3R | 10120 [ft] 3084 [m] | 11120 [ft] 3398 [m] | 11120 [ft] 3398 [m] | 10120 [ft] 3084 [m] | 36°13.029' N | 115°02.038' W | |
| | | | | | | | |
| | | | | | | | |

| ATIS | NELLIS GROUND | NELLIS TOWER | NELLIS CONTROL | TACAN | ILS RWY 21L | NELLIS EAST | NELLIS WEST |
|-------------|-------------------|------------------|----------------|---------|-------------|-------------|-------------|
| 270.100 MHz | 275.800 121.800 | 327.000 132.55 | 317.525 | LSV 12X | 109.10 Mhz | 384.400 | 385.000 |

FYTTTR THREE DEPARTURE IFR CHART | VALID 2014 LAS VEGAS, NEVADA

ATIS
270.100
NELLIS GROUND
275.800
NELLIS TOWER
327.000
NELLIS CONTROL
317.525
NELLIS DEP/APP EAST
384.400
BLACKJACK
377.800



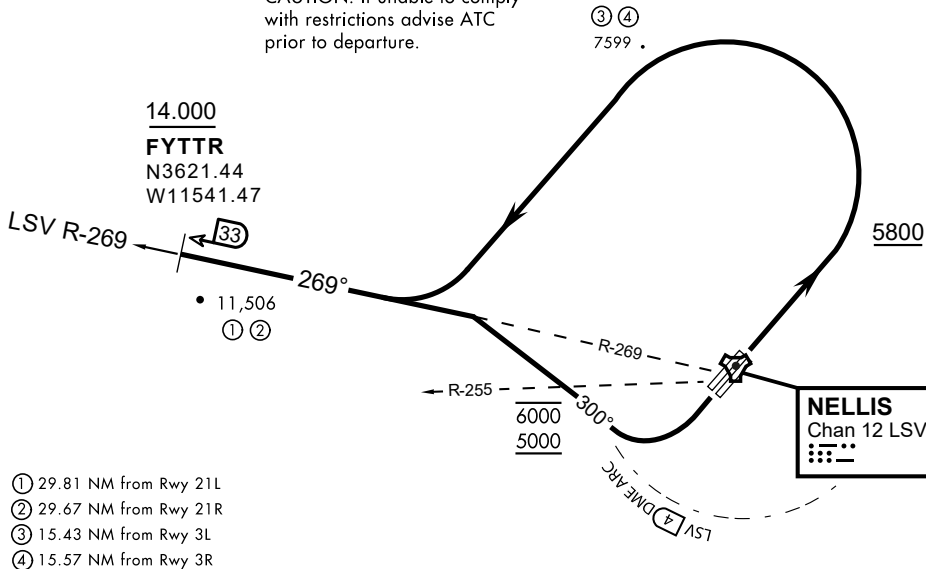
| Rwy | Knots | 60 | 120 | 180 | 240 | 300 | 360 |
|---------|----------|-----|-----|------|------|------|------|
| 3L (a) | V/V(fpm) | 394 | 788 | 1182 | 1576 | 1970 | 2364 |
| 3R (a) | V/V(fpm) | 392 | 784 | 1176 | 1568 | 1960 | 2352 |
| 21L (b) | V/V(fpm) | 388 | 776 | 1164 | 1552 | 1940 | 2328 |
| 21R (b) | V/V(fpm) | 390 | 780 | 1170 | 1560 | 1950 | 2340 |

Minimum Climb Rate

(a) to 9300

(b) to 13 500

CAUTION: If unable to comply with restrictions advise ATC prior to departure.



- ① 29.81 NM from Rwy 21L
- ② 29.67 NM from Rwy 21R
- ③ 15.43 NM from Rwy 3L
- ④ 15.57 NM from Rwy 3R

DEPARTURE ROUTE DESCRIPTION

TAKEOFF RWY 3L/R

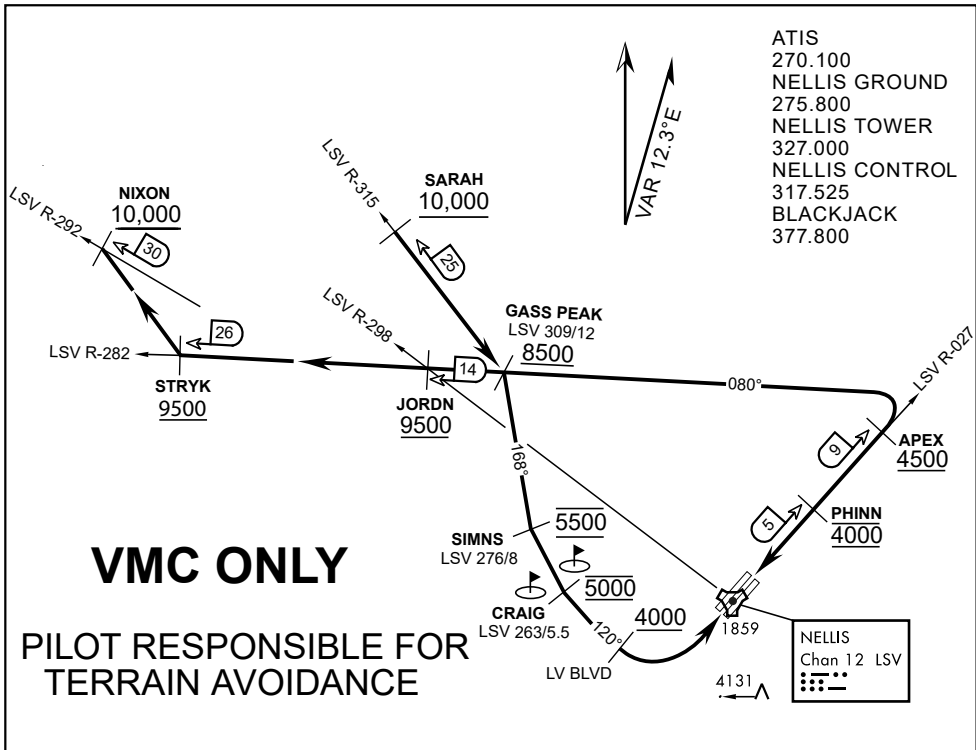
- Fly runway heading until reaching 5,800'.
- Then climbing left turn to intercept LSV TACAN R-269 outbound.
- Cross FYTTTR at or above 14,000' or as assigned, then via assigned route.

TAKEOFF RWY 21L/21R

- Turn right to intercept LSV TACAN R-269 outbound.
- Remain within LSV 4 DME until joining LSV R-269
- Cross R-255 between 5,000' and 6,000'.
- Cross FYTTTR at or above 14,000' or as assigned, then via assigned route.

NOISE ABATEMENT PROCEDURES:

Fly according Nellis Noise Abatement instructions as published



APPROACH ROUTE DESCRIPTION

APPROACH RWY 3L/R

Cross STRYK at or above 9,500' MSL, proceed direct GASS PEAK. Cross JORDN at or above 9,500' MSL, cross GASS PEAK at or above 8,500' MSL. Proceed direct SIMNS and cross at 5,500' MSL. Cross Las Vegas Blvd at or above 4,000' MSL then to 3,500' MSL for Initial. Remain within 4 DME if LSV on turn to final.

VFR STRAIGHT-IN RWY 3L/R

Depart CRAIG & descend to be at 3,000' MSL by Las Vegas Blvd. Do not descend below 3,000' MSL until within 5 DME of LSV or 4 NM of the runway on turn to final.

APPROACH RWY 21L/R

Cross STRYK at or above 9,500' MSL, proceed direct GASS PEAK. Cross JORDN at or above 9,500' MSL, cross GASS PEAK at or above 8,500' MSL. Cross APEX at or above 4,500' MSL then direct 5NM initial. Descend to cross PHINN at 4,000' MSL, Inside 5 NM descend to 3,500' MSL.

VFR STRAIGHT-IN RWY 21L/R

Cross APEX at 4,000' MSL. Descend to be at 3,000' MSL at PHINN. Descend to 3,000' MSL at LSV 027/5.

RANGE 63B EXIT

SOUTH: Via NIXON at or above 10,000' MSL, then direct STRYK.
EAST: Via SARAH at or above 10,000' MSL, then direct GASS PEAK.