

MISSION DATA CARD

OPORD		Callsign		Mission		Date/Time	
3024/2024		Raptor 1		Training		242003JUN24	
Task	SEAD HARM POS					Freq	
AO	SA2 Training Range					134.0	
Departure				Recovery			
RWY28 SID				TAC 28			
#	Callsign	Pilot	IFF	TCN	LSR	NET	
-1	Raptor 1-1	Hercules	1611	1Y	1621		
-3	Raptor 1-3	Butcher	1613	64X	1623		
-4	Raptor 1-4	Snowbird	1614	1X	1624		

LOADOUT

A/A	2xA120C, 2xA9X			GUN	100% HEI-T		
A/G	2xA88C			CHF	90		
POD	HTS, A184L, TGP			FLR	30		
TKS	2xFT300			FUEL	100%		

TOLD

	Takeoff	Target	Joker	Bingo	Land		
FUEL	11169						

AIRBASES

	Name	TCN	ATIS	GND	TWR	RWY	Elev	ILS
Dep	Akrotiri AFB	107X	288.2	240.1	339.85	28	62	109.7
Arr	Akrotiri AFB	107X	288.2	240.1	339.85	28	62	109.7
Div	Akrotiri AFB	107X	288.2	240.1	339.85	28	62	109.7

FLIGHTPLAN

#	Name	Navaid/Coords/DME	ALT	TOT
1	ECHO	N34 42.600 E033 10	9000	
2	PAPA	N34 39.390 E032 46.480	9000	
3	SIERRA		9000	

OTHER FLIGHTS

Callsign	Mission	Airframe	Freq	TCN	Grpld	Laser
Edelweiss 2	Training	2x F-16C	134.25	1/64		172X
AO		Task	LCR Check			

RADIO CHANNELS

#	Freq	Name
1		Flight/Squadron specific
2	288.2	Akrotiri ATIS
3	240.1	Akrotiri Ground
4	339.85	Aktrotiri Tower
5	335.05	Akrotiri Approach
6	360.1	Incirlik Tower
7	371.35	Incirlik Ground
8	377.475	Incirlik ATIS
9		No Preset
10	127.3	Paphos ATIS
11	353.8	Paphos Tower
12	304.0	CVN-73 George Washington
13	302.0	LHA-1 Tarawa
14	259.0	CV-59 Forrestal
15		No Preset
16	377.8	Overlord
17	265.0	KC-135 Texaco-1 medium/slow
18	319.8	KC-135 Arco-1
19	360.8	KC-135MPRS Arco-2
20	256.0	S-3B Recovery Tanker

RAMROD

0	1	2	3	4	5	6	7	8	9
L	A	N	G	U	I	S	H	E	D

KTC 1400 C

	0	1	2	3	4	5	6	7	8	9
A	PMRV	ULY	QNB	DO	WT	GEF	JS	IC	HX	AK
B	HGJQ	UAL	XCW	RK	BM	FDI	PS	YO	VN	TE
C	CJFK	UIX	BQM	LN	WT	RGS	AP	EO	DH	YV
D	HYDK	CJI	GME	TS	QO	PRU	WB	XF	VL	NA
E	XPSB	JVH	WAI	FR	KQ	MYE	GO	DT	UL	NC
F	PWMI	YTX	VCL	NK	BF	SDR	QE	AH	JG	OU
G	BNJA	WLD	REK	XU	VM	IHF	ST	OP	YC	GQ
H	BQVP	YDM	JRN	IO	FE	GWK	HS	LC	AX	TU
I	NXJT	OPL	WMC	DK	HR	QGS	YA	BU	EF	IV
J	JGTL	FDM	RIP	XA	BY	OQS	NK	VH	UW	EC
K	SLHY	GEF	VOR	AQ	ID	UXM	CB	KN	TP	WJ
L	MNFS	GUX	TBK	CH	RV	YOD	PA	WJ	LE	QI
M	JNVO	ITL	XCR	BG	FK	UQW	MS	PE	AH	DY
N	AQJH	MLO	NBS	EK	VU	YDW	IX	GR	PT	CF
O	MEJG	FWD	YQI	AT	CN	LXR	SH	BV	OP	KU
P	PQGN	DCV	IBT	WL	EK	XFY	AO	JM	SH	RU
Q	CAHP	YMX	ISE	DT	NW	UQL	KO	VB	GF	RJ
R	BIGP	XYW	LRE	HD	KA	QTO	CM	VF	JN	US
S	JFTW	IXB	QGO	UC	RD	PEN	VY	MA	SH	KL
T	VGNU	PBY	IAW	HQ	CE	RLD	KT	JS	XF	OM
U	GLEO	PXA	YRC	WN	UD	MBS	KV	IJ	QH	FT
V	CFMH	SVP	JWD	NI	AY	OEQ	RU	LK	BG	XT
W	RELJ	COF	VGM	TX	YP	KBW	UA	DS	HI	QN
X	FXDH	BAU	MKN	QR	WP	YGI	CV	SJ	LT	OE
Y	SIWA	RBC	HGE	OF	KV	DQN	XM	LU	JP	YT

NAVAIDS

Id	Name	Channel	Position	Elevation
DAN	Incirlik	21	N37 00.950 E035 26.883	243
AKR	Akrotiri	107	N34 34.765 E032 57.769	147
PHA	Paphos	79	N34 42.997 E032 28.963	35
RMD	Ramat David	84	N32 39.892 E035 11.265	136
OS66	Kuweires Military Aviation Institute	36	N36 11.362 E037 34.226	1200

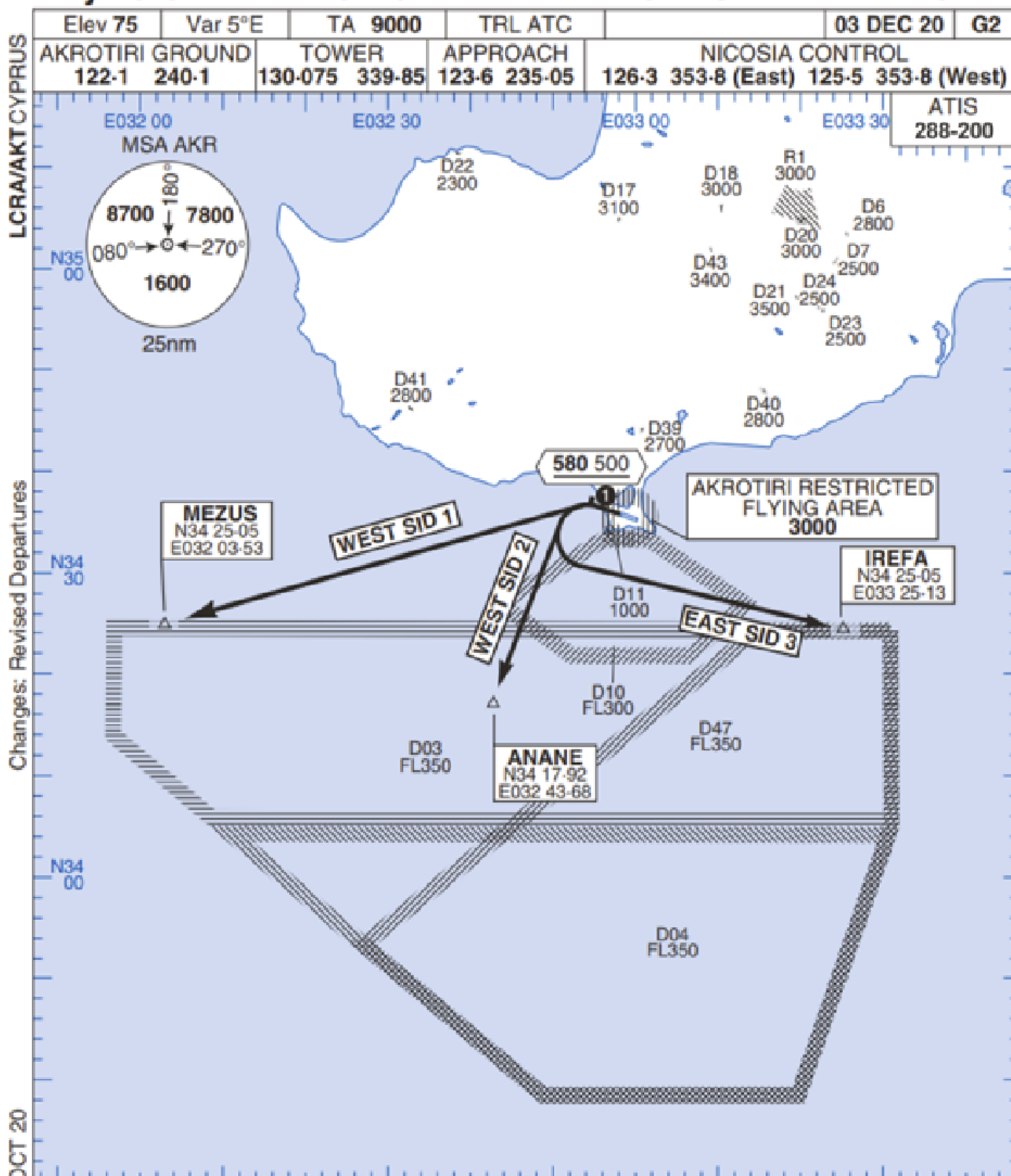
**FOR DCS
 USE ONLY**



ATIS	AKROTIRI GND	AKROTIRI TWR	OVERLORD CONTROL	TACAN	FIELD ELEVATION
288.20 MHz	240.10 122.10	339.85 130.075	377.8	AKR 107X	75 [ft] 23 [m]

Rwy 28 OMNIDIRECTIONAL DEPARTURES

AKROTIRI



LCRA/AKT CYPRUS

Changes: Revised Departures

No1 AIDU Last Amended 06 OCT 20

Elev 75	Var 5°E	TA 9000	TRL ATC	03 DEC 20	G2
AKROTIRI GROUND 122-1 240-1	TOWER 130-075 339-85	APPROACH 123-6 235-05	NICOSIA CONTROL 126-3 353-8 (East) 125-5 353-8 (West)		

- 1. Minimum climb gradient 7% to 580 500 for obstacle and operational purposes.
- 2. No turns before DER.
- 3. Turns to north of Rwy prohibited.
- 4. Acft unable to locate MEZUS/ANANE/IREFA should request radar vectors from ATC.

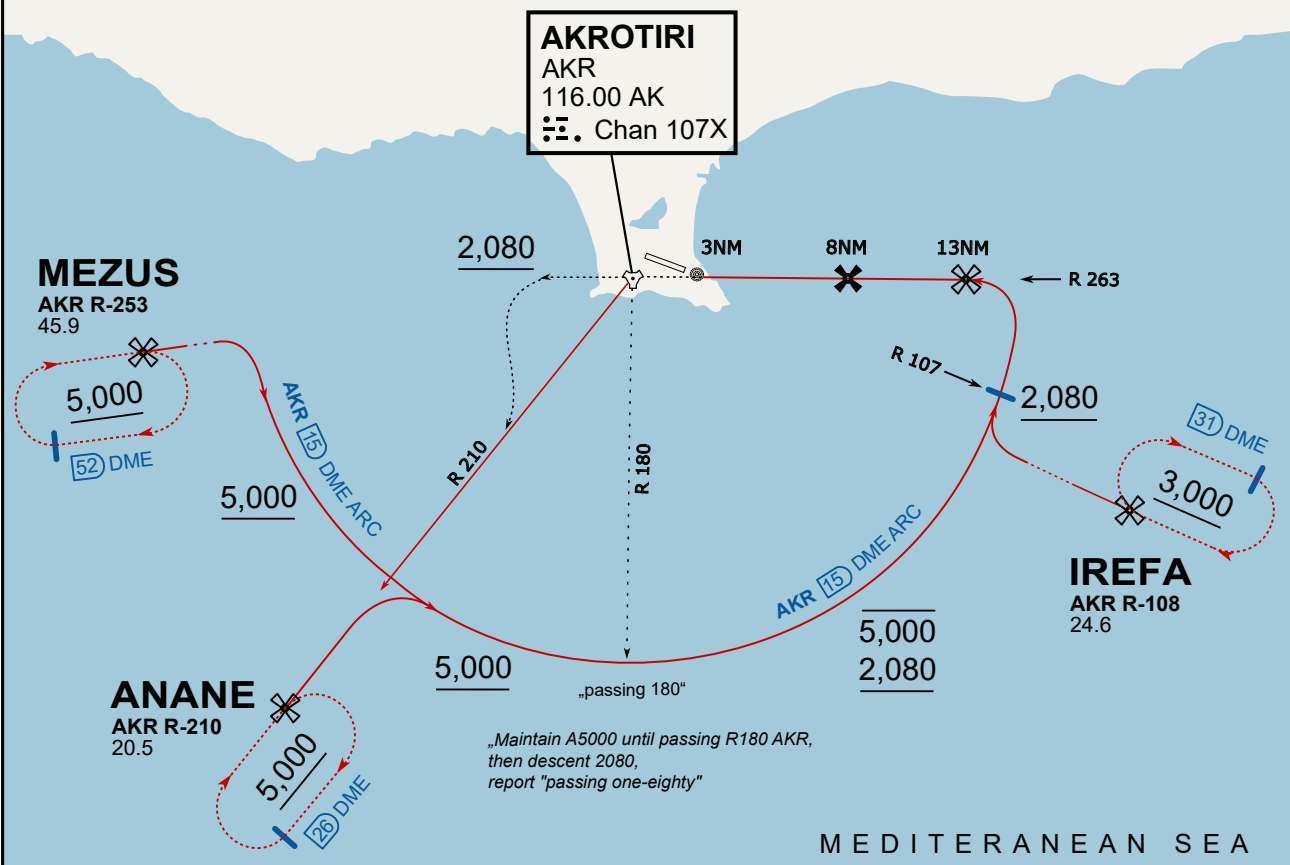
SID	RWY	ROUTEING (Including Mnm Noise Routes)
WEST SID 1	28 283°M	Ahead on Rwy Tr to 580 500, turn left direct to MEZUS. SID terminates at 9000.
WEST SID 2		Ahead on Rwy Tr to 580 500, turn left direct to ANANE. SID terminates at 9000.
EAST SID 3		Ahead on Rwy Tr to 580 500, turn left direct to IREFA. SID terminates at 9000.

© UK MOD Crown Copyright 2020. No1 AIDU is not responsible for, and claims no right to, the content or accuracy of 3rd party documents/information.

ATIS
 288.200
AKROTIRI GROUND
 122.100
AKROTIRI TOWER
 339.850
APP (OVERLORD)
 377.800

NOT FOR CIVIL USE

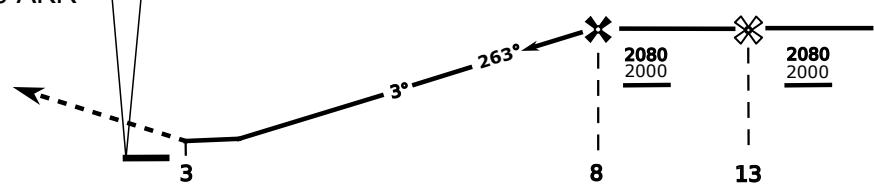
CAUTION: If unable to comply with restrictions advise ATC prior to departure.



On Track 263° climb A 4.000'. passing 2.080' (2.000' AAL) turn left and intercept R-210 AKR to ANANE. Enter ANANE Holding.

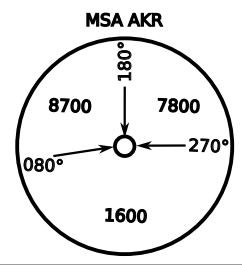


DME AKR	7	6	5	4
ALT	1780	1460	1140	820



THR Elev 74ft DME AKR

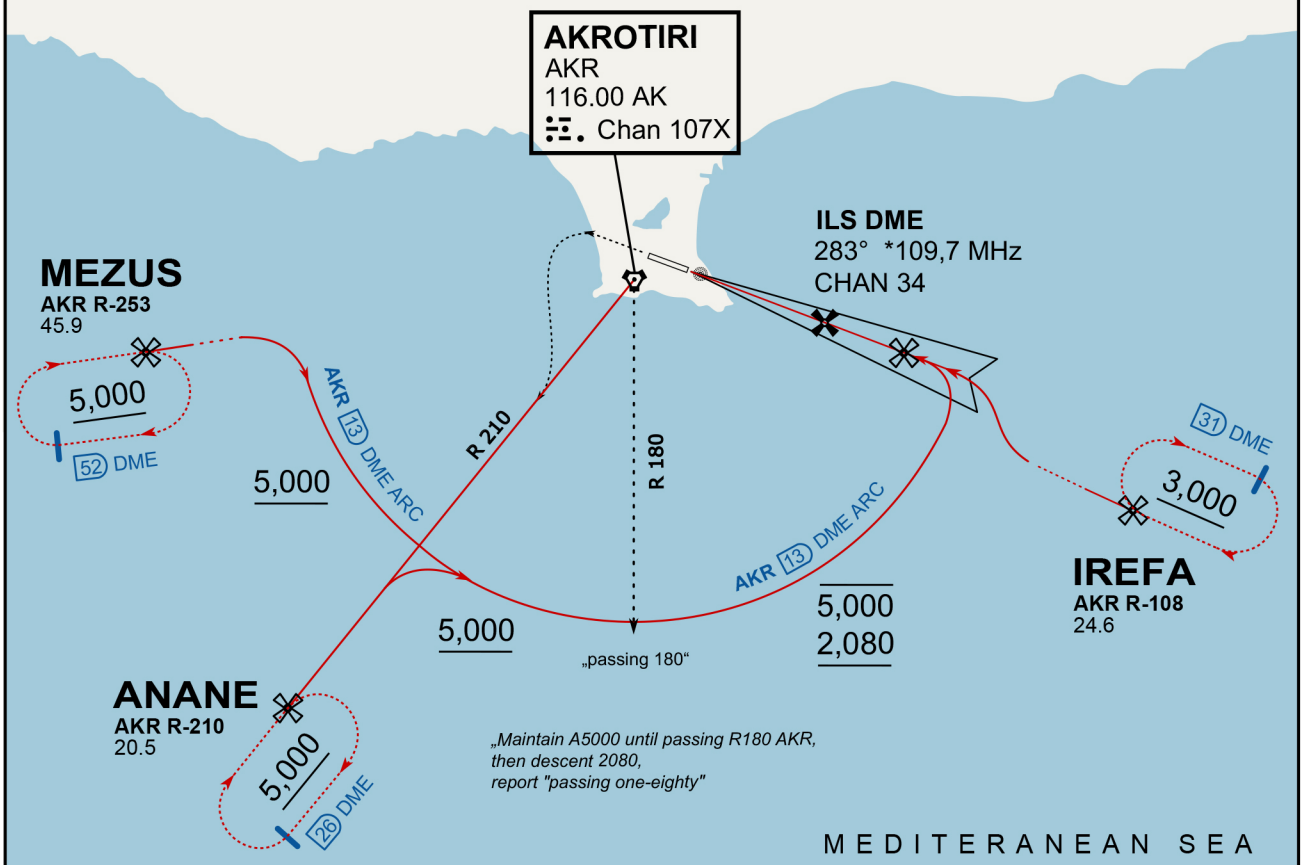
CAT	TAC	CIRCLE	GS (kts)	80	120	150	180	210
A	500(430)	680 (610) 2000m	FAF - MAPt (4.1NM)	3:06	2:03	1:38	1:22	1:10
B	1300m		RoD (fpm)	420	640	800	950	1110
C	780 (710)	780 (710) 3300m	- CIRCLING PROHIBITED N of Rwy - final track is offset 20° right of RCL and Intcp 1.1NM before THR - when established on final contact tower - Timing not Auth to define MAPt					
D	2600m	780 (710) 3600m						
E	1380 (1310)	1380 (1310) 5000m						
	5000m							



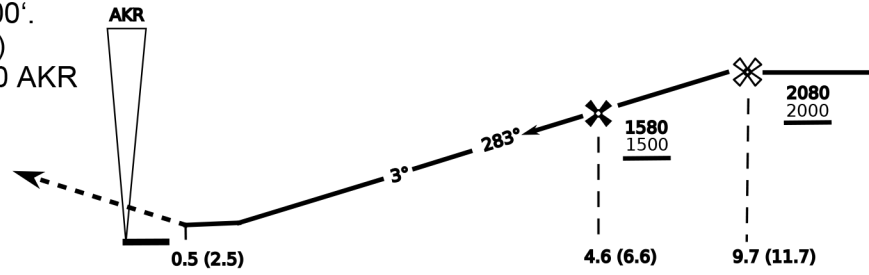
ATIS
288.200
AKROTIRI GROUND
122.100
AKROTIRI TOWER
339.850
APP (OVERLORD)
377.800

NOT FOR CIVIL USE

CAUTION: If unable to comply with restrictions advise ATC prior to departure.

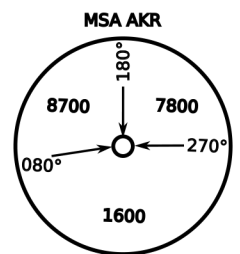


On Track 283° climb A 4.000'.
passing 2.080' (2.000' AAL)
turn left and intercept R-210 AKR
to ANANE.
Enter ANANE Holding.

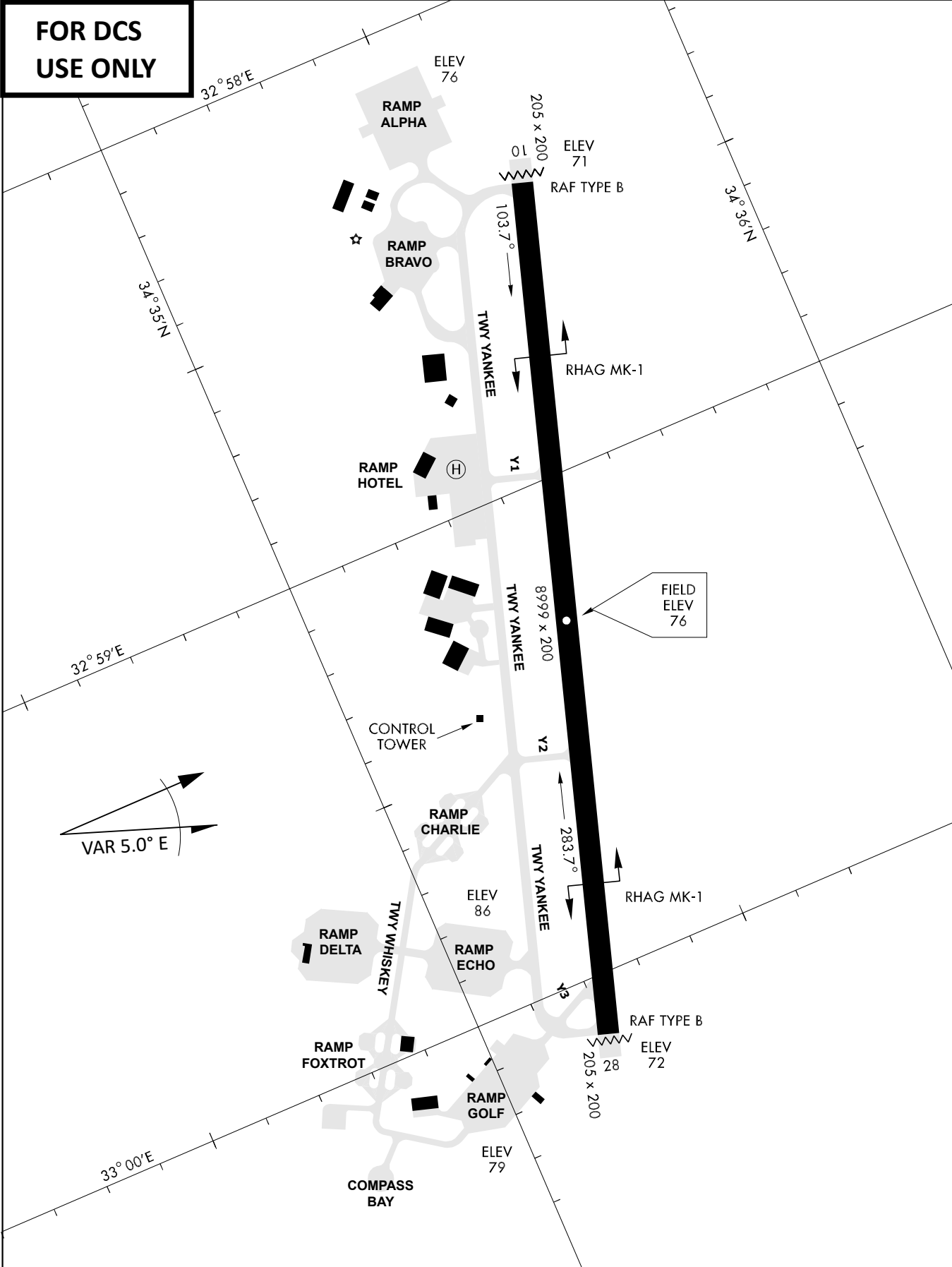


THR Elev 74ft DME I-AK (DME AKR)

CAT	ILS/DME	LOC/DME	CIRCLE	GS (kts)				
				80	120	150	180	210
A	280 (200)	390 (320) 800m	680 (610) 1500m	FAF - MAPt (4.1NM) 3:06 2:03 1:38 1:22 1:10				
B	800m		680 (610) 1600m	RoD (fpm) 420 640 800 950 1110				
C	290 (210) 800m		780 (710) 2400m	- CIRCLING PROHIBITED N of Rwy - no AUTO coupled ILS approaches - when established on ILS contact Tower - Timing not Auth to define MAPt				
D	310 (230) 800m		780 (710) 3600m					
E	340 (260) 800m		1380 (1310) 3600m					



**FOR DCS
 USE ONLY**



ATIS	AKROTIRI GND	AKROTIRI TWR	OVERLORD CONTROL	TACAN	FIELD ELEVATION
288.20 MHz	240.10 122.10	339.85 130.075	377.8	AKR 107X	75 [ft] 23 [m]