

**MISSION DATA CARD**

OPORD		Callsign		Mission		Date/Time		
3015/2024		Edelweiss 2		Training		221438JUN24		
Task						Freq		
AO						134.25		
Departure				Recovery				
RWY28 VFR				RWY10 VFR				
#	Callsign		Pilot		IFF	TCN	LSR	NET
-1	Edelweiss 2-1		Jinx		1721	1Y	1721	

**LOADOUT**

A/A	2xA120C, 2xA9X				GUN	100% HEI-T	
A/G	6xM82				CHF	120	
POD	HTS, A184, TGP				FLR	0	
TKS	2xFT300				FUEL	100%	

**TOLD**

	Takeoff	Target	Joker	Bingo	Land
FUEL	11169			2500	1500

**AIRBASES**

	Name	TCN	ATIS	GND	TWR	RWY	Elev	ILS
Dep	Akrotiri AFB	107X	288.2	240.1	339.85	28	62	109.7
Arr	Akrotiri AFB	107X	288.2	240.1	339.85	28	62	109.7
Div	Paphos Internationl	79X	127.3		353.8	29	40	108.9

**FLIGHTPLAN**

#	Name	Navaid/Coords/DME	ALT	TOT
1	IP	N34 48.965 E033 52.131	20000	
2	TGT	N34 57.009 E033 52.153	100	
3	ECHO	N34 42.600 E033 10	5000	
4	PAPA	N34 39.390 E032 46.480	5000	
5	LOSOS	N34 42.589 E033 22.190	7000	

**RADIO CHANNELS**

#	Freq	Name
1		Flight/Squadron specific
2	288.2	Akrotiri ATIS
3	240.1	Akrotiri Ground
4	339.85	Aktrotiri Tower
5	335.05	Akrotiri Approach
6	360.1	Incirlik Tower
7	371.35	Incirlik Ground
8	377.475	Incirlik ATIS
9		No Preset
10	127.3	Paphos ATIS
11	353.8	Paphos Tower
12	304.0	CVN-73 George Washington
13	302.0	LHA-1 Tarawa
14	259.0	CV-59 Forrestal
15		No Preset
16	377.8	Overlord
17	265.0	KC-135 Texaco-1 medium/slow
18	319.8	KC-135 Arco-1
19	360.8	KC-135MPRS Arco-2
20	256.0	S-3B Recovery Tanker

**RAMROD**

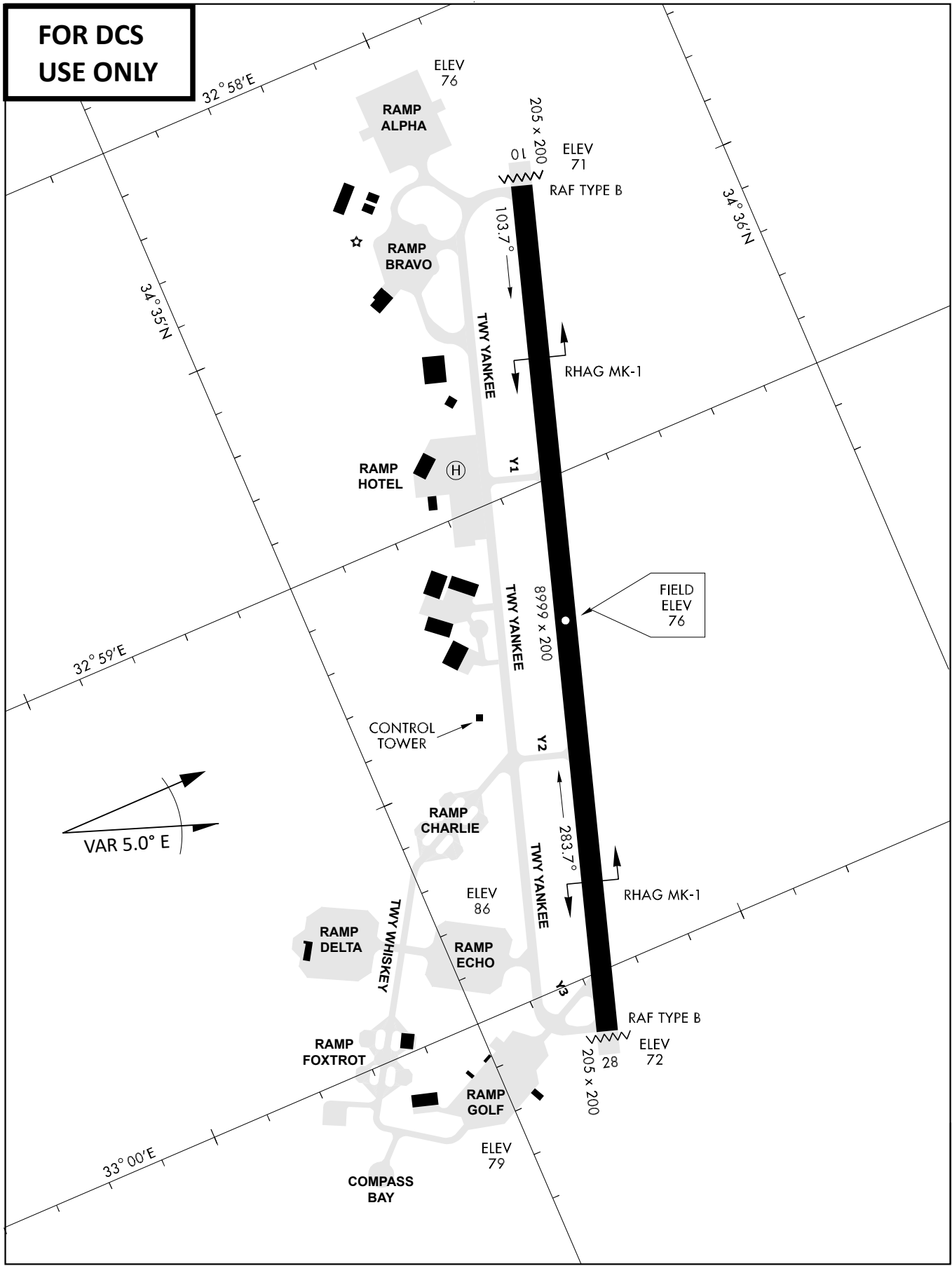
0	1	2	3	4	5	6	7	8	9
F	O	R	M	I	D	A	B	L	E

**KTC 1400 C**

	0	1	2	3	4	5	6	7	8	9
A	JIMT	BYP	LES	AK	UF	VXQ	RO	HG	CN	WD
B	CUEV	WGX	BYQ	PH	JN	MSL	OT	IA	RK	FD
C	EUDK	SCM	FOI	YL	RT	WXB	JG	AP	VH	NQ
D	QAKY	RJP	OXT	DB	UW	FGH	CM	IN	SV	LE
E	YASK	JQG	MFH	UC	XR	TNV	BE	OD	PL	IW
F	GVFP	CBY	UOX	AI	RM	JHQ	LS	WN	TD	EK
G	PHNY	CUS	GKM	BL	XI	JOT	WV	EA	DQ	FR
H	JKQM	EBT	PNW	YS	OL	FGA	CD	VR	UH	IX
I	SQHK	UDV	CLY	WP	JR	GIE	TB	ON	AF	MX
J	LQWH	RJN	KYX	CF	OM	EPS	VU	IB	GA	TD
K	LUBQ	PGH	XMW	FY	ID	OTE	VN	KS	CA	JR
L	YIDG	PSE	QCH	UV	FN	TAK	BL	JX	OR	MW
M	SJGR	NLP	AEW	VH	QY	MIU	DC	FT	XB	KO
N	XUHA	IKR	TNQ	CB	MY	VDW	JG	SP	FO	LE
O	APJU	XIF	SQM	WY	CD	EGO	NB	LK	VT	RH
P	CXQW	GSB	PMA	EY	FI	LUD	TJ	KN	OR	VH
Q	LEJP	OQT	WYG	DF	RU	HKX	VI	SN	BA	CM
R	DMGB	XIH	ALN	TR	JP	OYW	SF	CV	EU	KQ
S	VKCP	LBH	EUI	DW	XM	JGN	TA	SY	RO	QF
T	YTMR	QDU	VIO	WX	SH	GBC	AN	JK	LP	EF
U	POTN	JML	RIS	HE	CU	FKA	VX	DY	WG	QB
V	LNHD	CUK	BWJ	OA	MG	FTR	YI	XQ	SV	PE
W	VLTC	GRB	IQK	MY	AN	SJD	EH	PF	UX	OW
X	RYLX	HJU	SWI	EF	OP	MTC	KN	DB	QA	GV
Y	RCTE	XIB	UYN	VF	AG	MPL	KS	JH	QO	DW

**NAVAIDS**

<b>Id</b>	<b>Name</b>	<b>Channel</b>	<b>Position</b>	<b>Elevation</b>
DAN	Incirlik	21	N37 00.950 E035 26.883	243
AKR	Akrotiri	107	N34 34.765 E032 57.769	147
PHA	Paphos	79	N34 42.997 E032 28.963	35
RMD	Ramat David	84	N32 39.892 E035 11.265	136
OS66	Kuweires Military Aviation Institute	36	N36 11.362 E037 34.226	1200



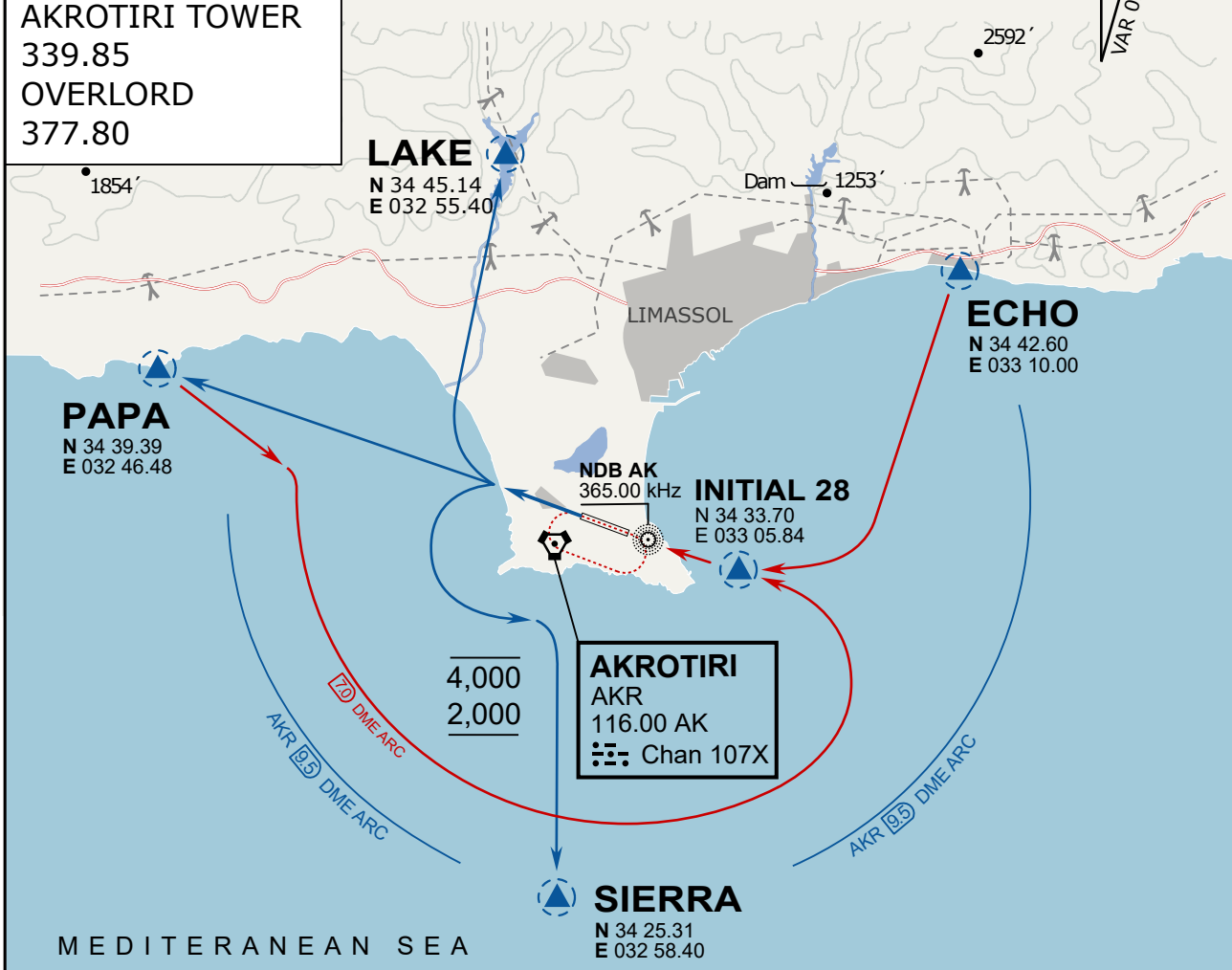
**FOR DCS  
 USE ONLY**

ATIS	AKROTIRI GND	AKROTIRI TWR	OVERLORD CONTROL	TACAN	FIELD ELEVATION
288.20 MHz	240.10   122.10	339.85   130.075	377.8	AKR 107X	<b>75 [ft] 23 [m]</b>

**ATIS**  
 288.20  
**AKROTIRI GROUND**  
 240.10  
**AKROTIRI TOWER**  
 339.85  
**OVERLORD**  
 377.80

### NOT FOR CIVIL USE

CAUTION: If unable to comply  
 with restrictions advise ATC  
 prior to departure.



### ARR / DEP ROUTE DESCRIPTION

#### STRAIGHT-IN RWY28

Pass ENTRY at 5.000' MSL or below, pass INITIAL at 1.500' MSL or below.

#### OVERHEAD BREAK RWY28

Pass ENTRY at 5.000' MSL or below, pass INITIAL at 2.000' MSL, break to the south.

#### DEPARTURE GENERAL

Pass Departure end of runway at 1.000' or below.

DEP RWY28 PAPA: Fly straight ahead to exit.

DEP RWY28 LAKE: Fly straight ahead until coast, than right turn direct exit.

DEP RWY28 SIERRA: Fly straight ahead until coastline, then climbing left turn, intercept AKR R-180 to exit.

DEP ECHO: no exit.

ATIS

288.20

AKROTIRI GROUND

240.10

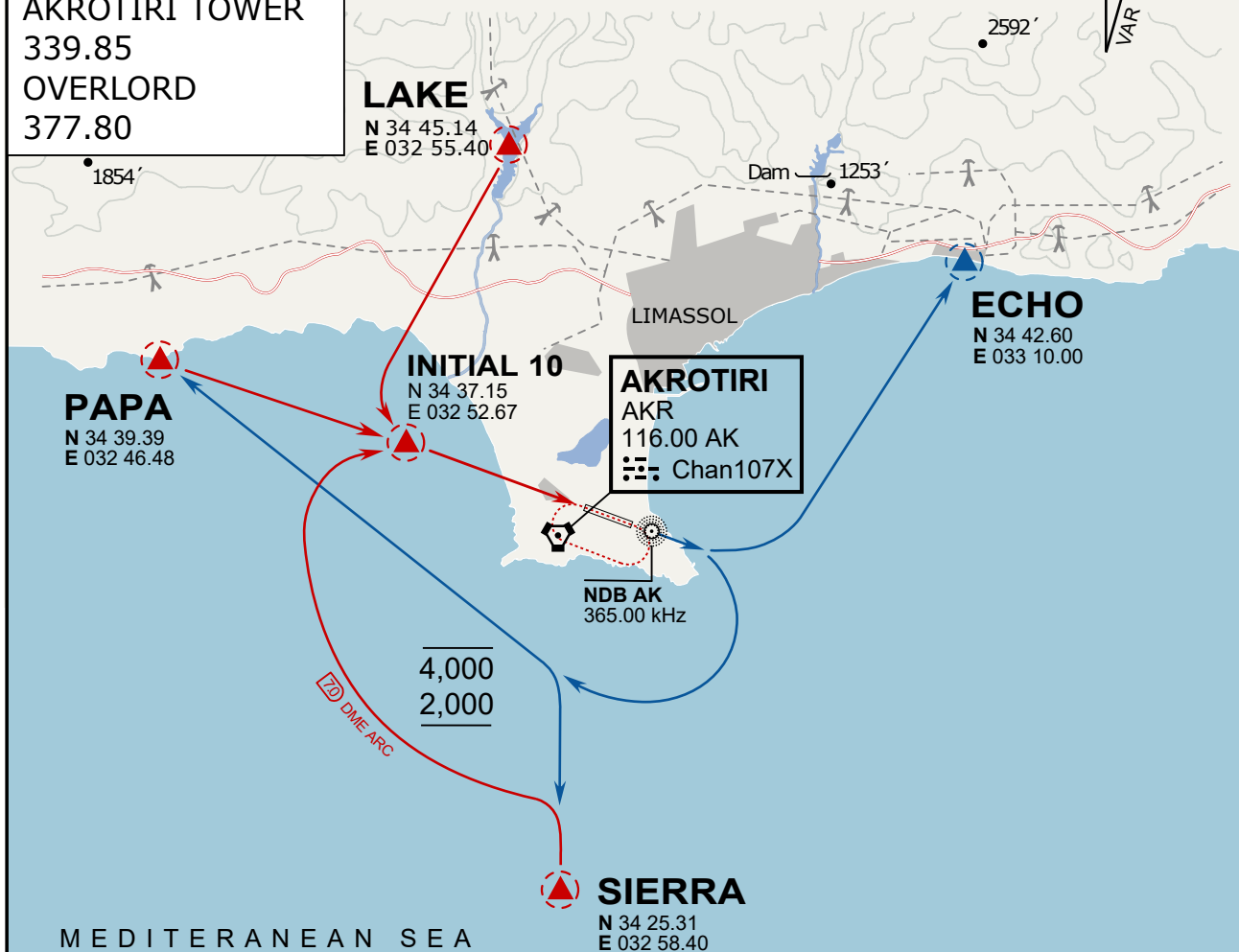
AKROTIRI TOWER

339.85

OVERLORD

377.80

NOT FOR CIVIL USE

CAUTION: If unable to comply  
with restrictions advise ATC  
prior to departure.

## ARR / DEP ROUTE DESCRIPTION

ARRIVAL GENERAL

Pass Entry at 5.000' or below. Overhead Brake RWY 10: pass INITIAL 10 at 2.000' MSL.  
Straight-in RWY 10 : pass INITIAL 1.500' or below.

ARR RWY10 PAPA / LAKE: Direct initial.

ARR RWY10 SIERRA: Intercept ARC 7 of AKR to INITIAL 10.

ARR ECHO: no ENTRY.

DEPARTURE GENERAL

Pass Departure end of runway at 1.000' AGL or below. Keep RWY heading until coastline.

DEP RWY10 ECHO: Direct EXIT.

DEP RWY10 SIERRA: Climbing right turn, intercept R180 AKR to Sierra.

DEP RWY10 PAPA: Climbing right turn until R180 AKR, then direct Papa

DEP LAKE: no EXIT.



**NOT AVAILABLE**

**NOT AVAILABLE**