

**MISSION DATA CARD**

OPORD		Callsign		Mission		Date/Time		
3012/2024		Edelweiss		Training		191523JUN24		
Task						Freq		
AO						264.05		
Departure				Recovery				
RWY10 SID				VFR				
#	Callsign		Pilot		IFF	TCN	LSR	NET

**LOADOUT**

A/A						GUN	
A/G						CHF	
POD						FLR	
TKS						FUEL	

**TOLD**

	Takeoff	Target	Joker	Bingo	Land
FUEL	11087				

**AIRBASES**

	Name	TCN	ATIS	GND	TWR	RWY	Elev	ILS
Dep	Akrotiri AFB	107X	288.2	240.1	339.85	28	62	109.7
Arr	Incirlik AFB	21X	377.47 5	371.35	360.1	5	190	

**RADIO CHANNELS**

#	Freq	Name
1		Flight/Squadron specific
2	288.2	Akrotiri ATIS
3	240.1	Akrotiri Ground
4	339.85	Aktrotiri Tower
5	335.05	Akrotiri Approach
6	360.1	Incirlik Tower
7	371.35	Incirlik Ground
8	377.475	Incirlik ATIS
9		No Preset
10	127.3	Paphos ATIS
11	353.8	Paphos Tower
12	304.0	CVN-73 George Washington
13	302.0	LHA-1 Tarawa
14	259.0	CV-59 Forrestal
15		No Preset
16	377.8	Overlord
17	265.0	KC-135 Texaco-1 medium/slow
18	319.8	KC-135 Arco-1
19	360.8	KC-135MPRS Arco-2
20	256.0	S-3B Recovery Tanker

**RAMROD**

0	1	2	3	4	5	6	7	8	9
S	T	O	C	K	P	I	L	E	D

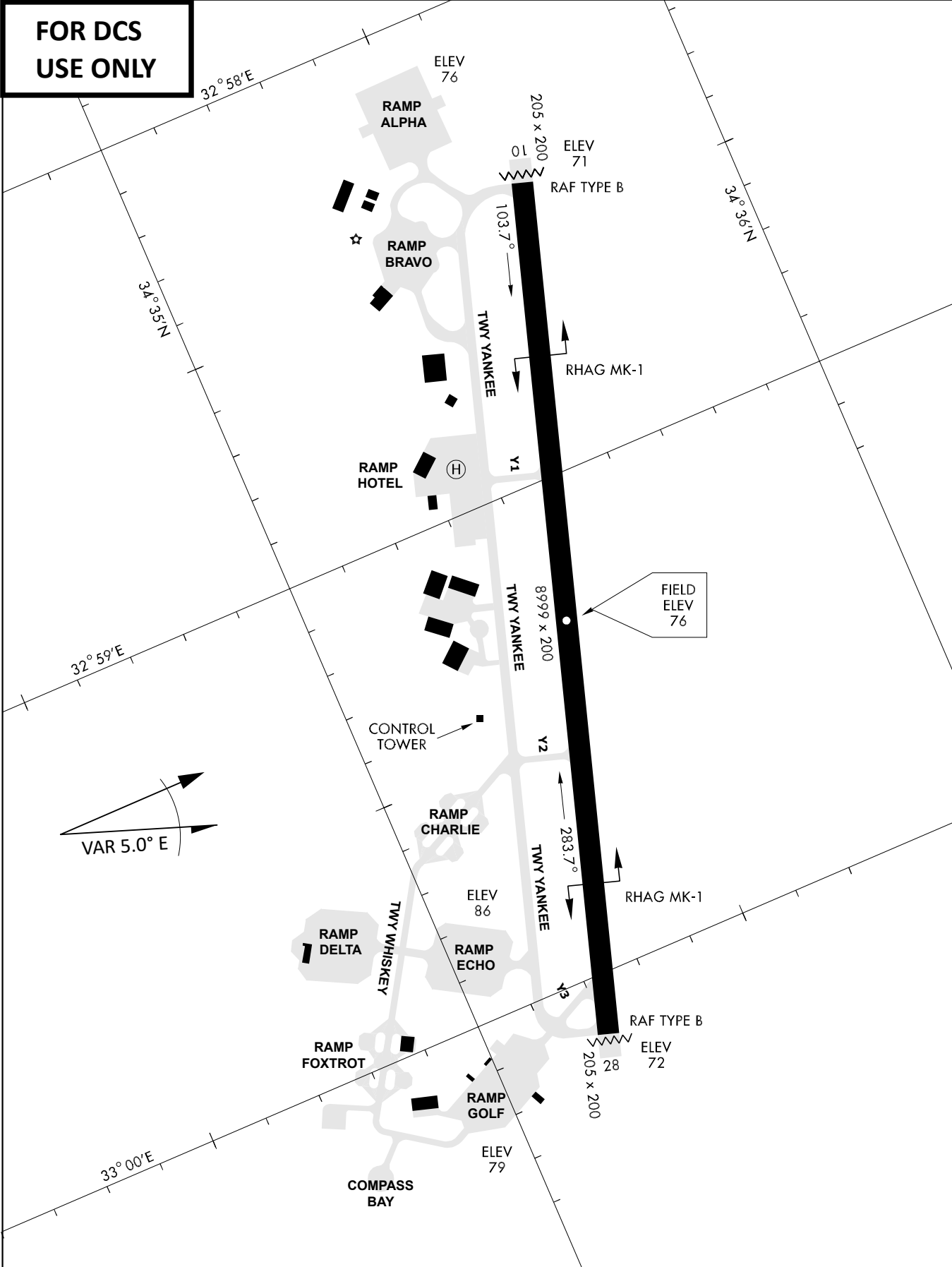
**KTC 1400 C**

	0	1	2	3	4	5	6	7	8	9
A	LEOF	UTR	WKP	XH	AG	SQB	IN	JV	MC	DY
B	ENQO	IPX	FMW	SU	HB	YGD	KR	AL	VT	JC
C	JXQP	BHU	ROS	GL	AC	YKM	ED	TI	WN	FV
D	HWJG	QDU	XSI	PL	YB	TVA	NM	RC	EK	FO
E	NGYX	ICS	HTJ	DK	RW	PEO	MV	BA	QL	UF
F	SQWD	JAK	NUB	XP	VC	RMI	HE	YT	FG	LO
G	TLCH	OFS	GXP	QK	JN	YVB	RM	ID	WE	AU
H	YGIU	HWK	SNE	CM	DP	QLR	AX	BT	JO	VF
I	UPFY	ISC	KER	QG	BA	DLM	WX	TO	JV	NH
J	WFRC	MJY	SVE	IG	PA	QHN	LB	KO	DT	XU
K	YDLW	UPR	EXO	IF	QT	HCJ	NG	VA	BK	SM
L	QKPU	GNF	BLD	XI	RA	ETV	JW	MO	YH	CS
M	MPWL	GES	XIC	YF	TJ	UBD	VO	QA	KN	RH
N	UYWF	ETG	LQV	SA	XM	RBI	DN	KP	CJ	OH
O	MNAK	HWE	CGI	YB	QJ	RSO	XT	VL	FD	UP
P	QICU	THM	XRP	VW	ND	BSJ	YA	LG	KO	EF
Q	VJOS	IDE	HUB	LX	MF	NRA	YC	QK	WT	GP
R	TCRL	IBX	GMO	DE	NW	VKF	AY	SJ	UP	QH
S	FQIH	GJX	NVT	PD	EM	CLS	AB	KU	YW	RO
T	MBAY	JGL	WIR	SE	TP	DQK	OC	NF	VX	UH
U	NGDQ	FTJ	AMK	XU	VB	CPI	ER	OW	HS	LY
V	TRSD	LNA	JIV	HY	KM	GFW	PB	QO	XU	EC
W	WRUM	HBG	FYV	KI	JA	OPQ	DC	XN	ES	LT
X	IXNP	RUG	QMS	VC	FY	KDH	BT	JL	WA	OE
Y	IWGM	QPD	KUN	RT	LY	SBO	XA	JV	EF	CH

**NAVAIDS**

<b>Id</b>	<b>Name</b>	<b>Channel</b>	<b>Position</b>	<b>Elevation</b>
DAN	Incirlik	21	N37 00.950 E035 26.883	243
AKR	Akrotiri	107	N34 34.765 E032 57.769	147
PHA	Paphos	79	N34 42.997 E032 28.963	35
RMD	Ramat David	84	N32 39.892 E035 11.265	136
OS66	Kuweires Military Aviation Institute	36	N36 11.362 E037 34.226	1200

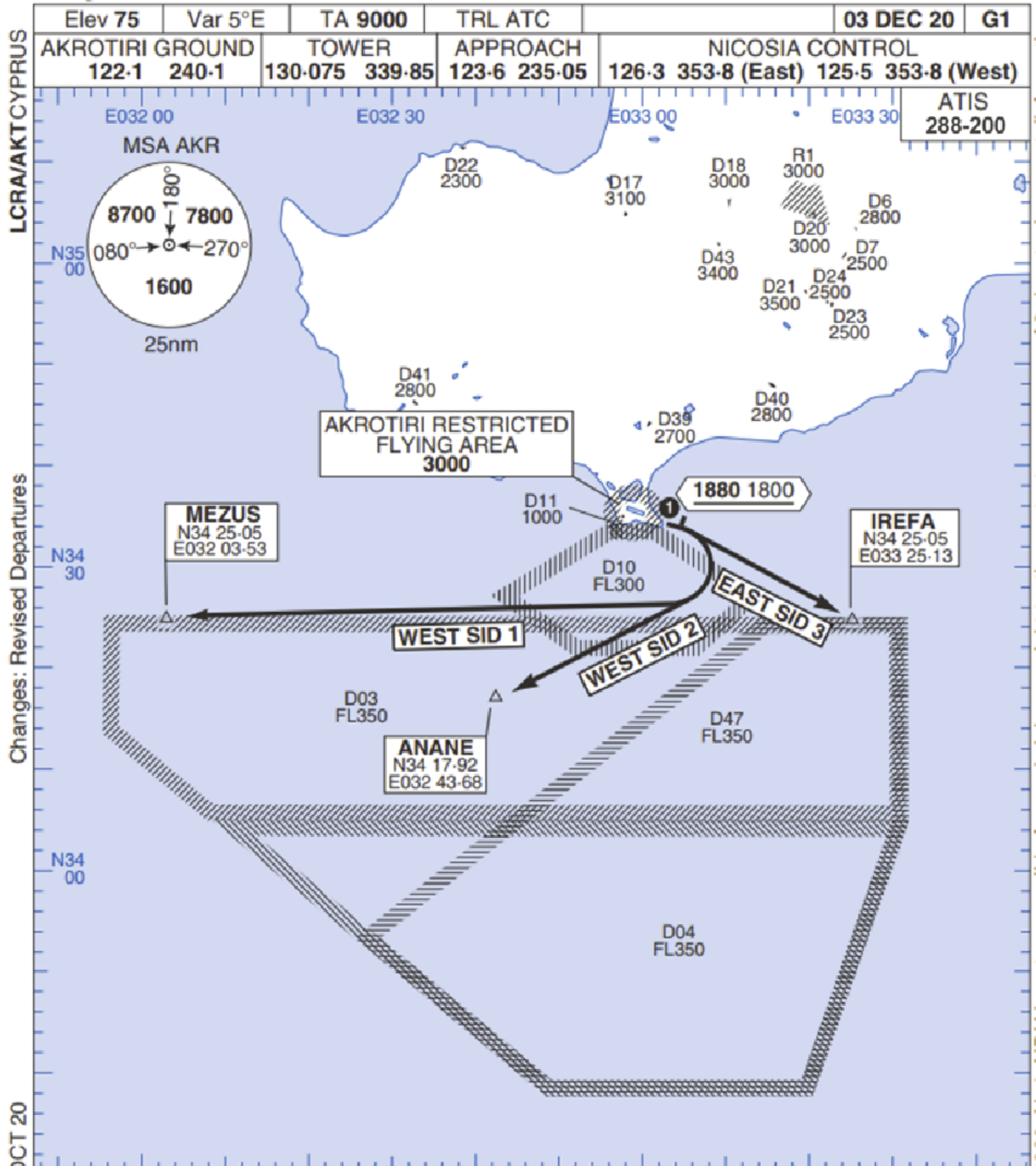
**FOR DCS  
 USE ONLY**



ATIS	AKROTIRI GND	AKROTIRI TWR	OVERLORD CONTROL	TACAN	FIELD ELEVATION
288.20 MHz	240.10   122.10	339.85   130.075	377.8	AKR 107X	<b>75 [ft] 23 [m]</b>

# Rwy 10 OMNIDIRECTIONAL DEPARTURES

# AKROTIRI



LCRA/AKTCYPRUS

Changes: Revised Departures

No1 AIDU Last Amended 06 OCT 20

Elev 75	Var 5°E	TA 9000	TRL ATC		03 DEC 20	G1
AKROTIRI GROUND 122.1 240.1		TOWER 130.075 339.85		APPROACH 123.6 235.05		NICOSIA CONTROL 126.3 353.8 (East) 125.5 353.8 (West)

ATIS  
288-200

- 1. Minimum climb gradient 7% to 1880 1800 for obstacle and operational purposes.
- 2. No turns before DER.
- 3. Turns to north of Rwy **prohibited**.
- 4. Acft unable to locate MEZUS/ANANE/IREFA should request radar vectors from ATC.

SID	RWY	ROUTEING (Including Mnm Noise Routes)
WEST SID 1	10 103°M	Ahead on Rwy Tr to 1880 1800, then right direct to MEZUS. SID terminates at 9000.
WEST SID 2		Ahead on Rwy Tr to 1880 1800, then right direct to ANANE. SID terminates at 9000.
EAST SID 3		Ahead on Rwy Tr to 1880 1800 then right direct to IREFA. SID terminates at 9000.

AKROTIRI  
MIPS

Rwy 10 OMNIDIRECTIONAL DEPARTURES

© UK MOD Crown Copyright 2020. No1 AIDU is not responsible for, and claims no right to, the content or accuracy of 3rd party documents/information.

# LTAG VFR Chart RWY 05 / 23 VALID 2014

ATIS  
377.475 (#8)

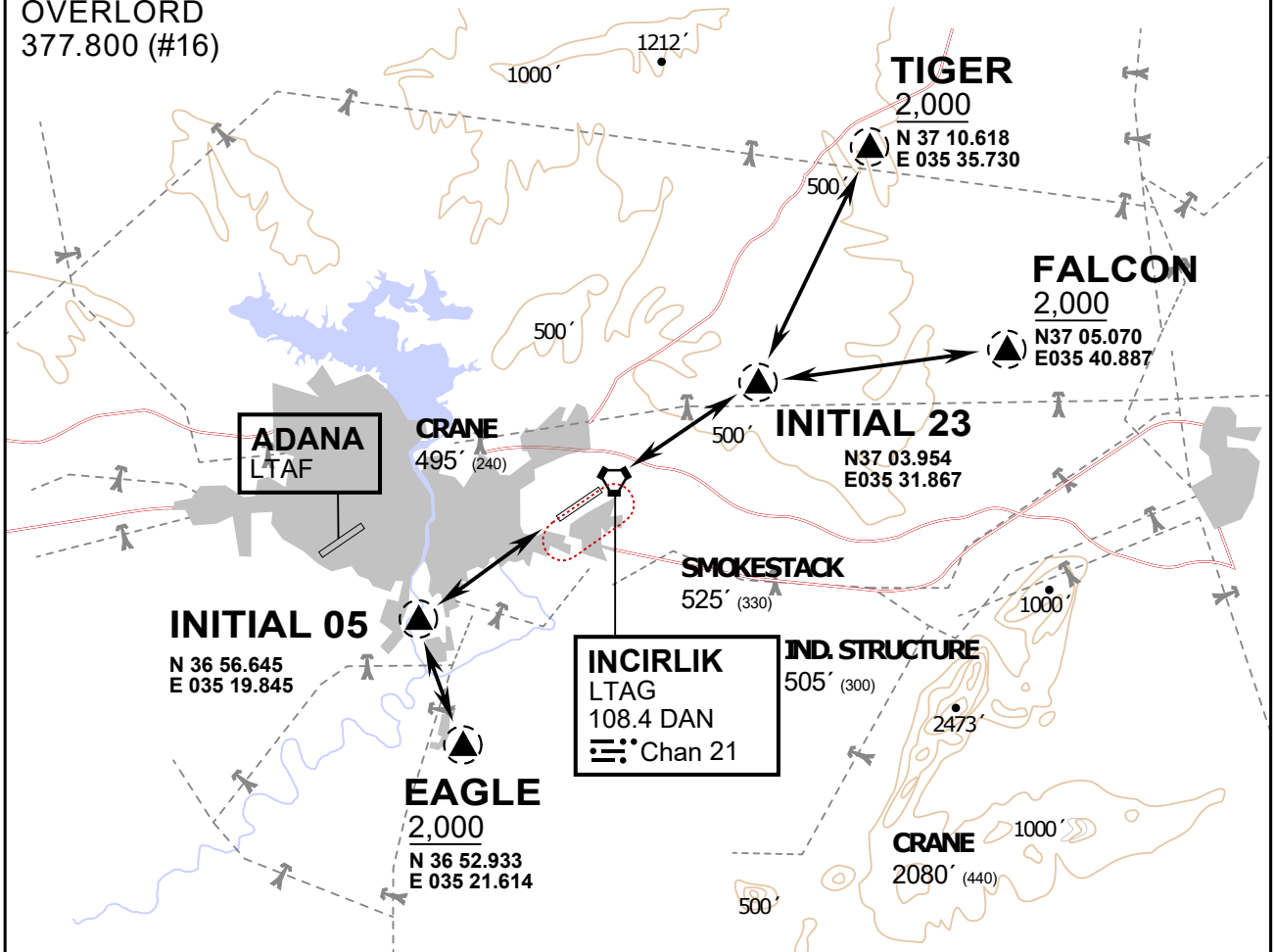
INCIRLIK GROUND  
371.3500 (#7)

INCIRLIK TOWER  
360.100 (#6)

OVERLORD  
377.800 (#16)

**NOT FOR CIVIL USE**

CAUTION: If unable to comply with restrictions advise ATC prior to departure.



vJaBoG32 ETTR NAV CHART

## ARR / DEP ROUTE DESCRIPTION

### STRAIGHT-IN RWY 05 / 23

Pass entry EAGLE / TIGER / FALCON at 2000' and INITIAL at 1500'

### OVERHEAD BREAK RWY 05 / 23

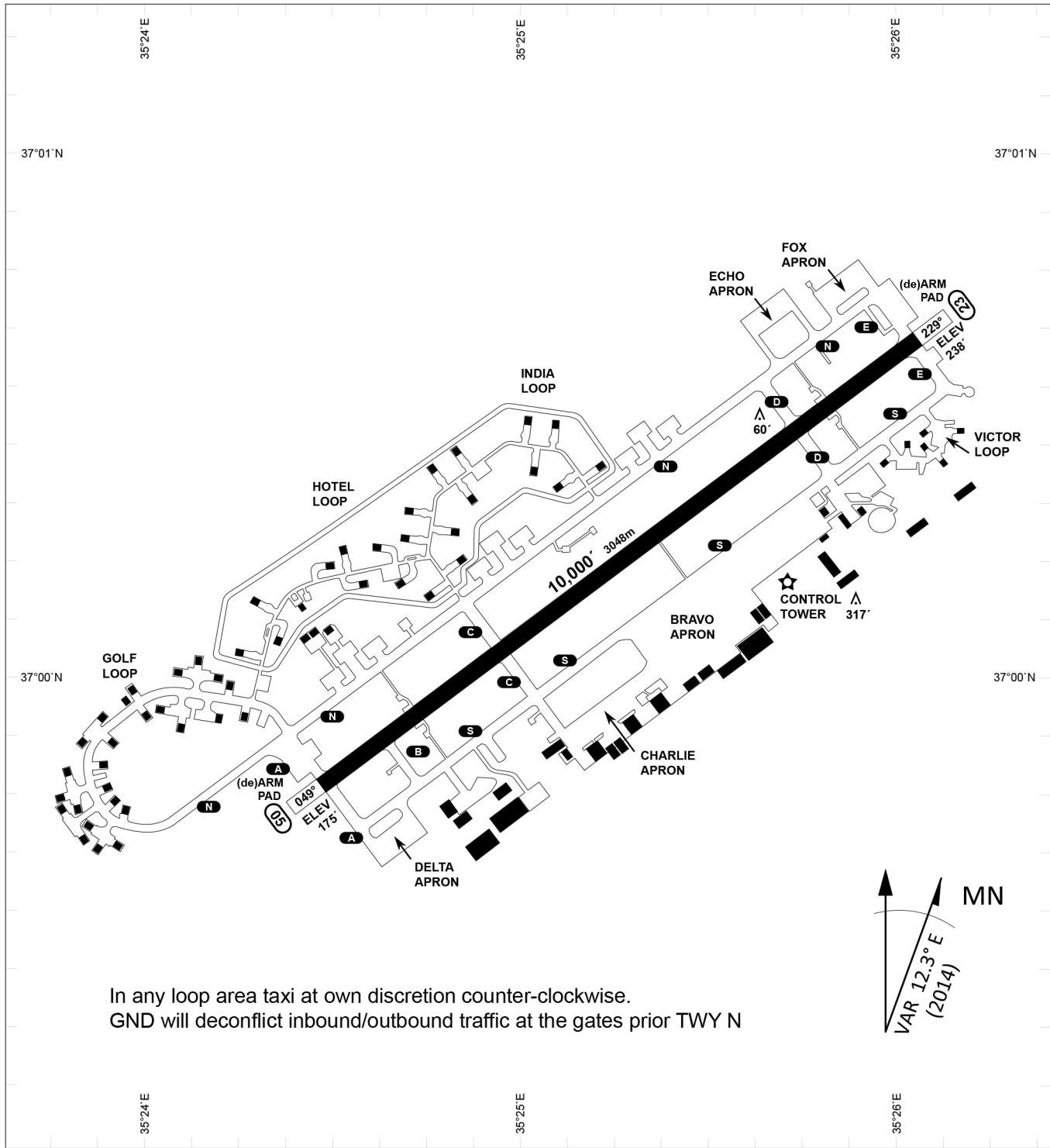
Pass entry EAGLE / TIGER / FALCON at 2500', pass INITIAL at 2000' break to the south at 2000' pattern altitude.

### HELICOPTER ROUTES

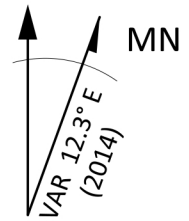
Pass entry EAGLE / TIGER / FALCON at 1000' or below, pass INITIAL at 1000' break to the south at 1000' pattern altitude.

### DEPARTURE ALL DIRECTIONS

pass DER below 1500ft



In any loop area taxi at own discretion counter-clockwise.  
 GND will deconflict inbound/outbound traffic at the gates prior TWY N



PAR	RWY	CAT	MINIMA	ARP	ELEV	Scale 1:35'500 0 300 600 900 1200 1500 [m] 0 1000 2000 3000 4000 5000 [ft]
SRA	21L 3R 21R 3L	A B D E A B D E A C D E A C D E	2057 - 0.8 200 (200-0.8/1.6) GS 3° 2057 - 0.8 200 (200-0.8/1.6) GS 3° 2257 - 1.2 350 (350-1.2/1.6) 2257 - 1.2 350 (350-1.2/1.6)	37°0'56.000" N 35°26'53.000" E	1857 [ft] 566 [m]	

RWY	TORA	TORA from D	TORA from B	COURSE	PSN THR	ALS
23	10,000 [ft] 3048 [m]	8,000 [ft] 2438 [m]		235°	37°00.611'N 035°26.368'E	⊙
05	10,000 [ft] 3048 [m]		9,000 [ft] 2743 [m]	055°	36°59.043'N 035°24.760'E	⊙

ATIS	INCIRLIK GROUND	INCIRLIK TOWER	CONTROL	TACAN	ILS RWY 05	ILS RWY 23
377.475	371.350   123.020	360.100   121.100	337.800	DAN21x	109.3MHz	111.7MHz