

MISSION DATA CARD

OPORD		Callsign		Mission		Date/Time		
3011/2024		Monster 1		CAS		182000JUN24		
Task	CAS					Freq		
AO	R63					132.15		
Departure				Recovery				
FYTTR LOW				STRYK				
#	Callsign		Pilot		IFF	TCN	LSR	NET
-1	Monster 1-1		Marsy		1411	1Y	1611	21/01

LOADOUT

A/A		GUN	
A/G		CHF	
POD		FLR	
TKS		FUEL	

TOLD

	Takeoff	Target	Joker	Bingo	Land
FUEL	11087				

AIRBASES

	Name	TCN	ATIS	GND	TWR	RWY	Elev	ILS
Dep	Nellis AFB	12X	270.1	275.8	327.0	21L	1850	109.1
Arr	Nellis AFB	12X	270.1	275.8	327.0	21L	1850	109.1

FLIGHTPLAN

#	Name	Navaid/Coords/DME	ALT	TOT
1	FYTTR	LSV 269/33 (N36 21.440 W115 41.470)		
2	T63.01	N36 35.552 W115 31.564		
3	STRYK	LSV 282/26 (N36 25.620 W115 30.700)		
4	SARAH	LSV 315/25 (N36 36.450 W115 18.030)		
5	GASS PEAK	LSV 309/12 (N36 24.140 W115 10.660)		
6	APEX	LSV 027/09 (N36 21.580 W114 54.340)		

COMMS

Radio	Usage
1	132.15
2	11-3-4-16-11-4-3
3	35.75

RADIO CHANNELS

#	Freq	Name
1		Flight/Squadron specific
2	289.4	Nellis Clearance Delivery
3	275.8	Nellis Ground
4	327.0	Nellis Tower
5	385.4	Nellis Approach/Departure West
6	273.55	Nellis Approach/Departure East
7	317.525	Nellis Control -- Sally
8	254.4	Nellis Control-- Lee
9	305.6	SOF Bullseye
10	343.725	EMERGENCY SINGLE FRQ
11	270.1	Nellis ATIS
12	360.625	Creech AFB Tower
13	250.1	HAVE QUICK 13
14	251.1	HAVE QUICK 14
15	252.1	HAVE QUICK 15
16	377.8	Blackjack
17	265.0	KC-135 AR-641A
18	360.8	KC-135MPRS AR-635
19	319.8	KC-135MPRS AR-625
20	300.05	KC-135 AR-231V

RAMROD

0	1	2	3	4	5	6	7	8	9
E	A	R	T	H	L	I	N	G	S

KTC 1400 C

	0	1	2	3	4	5	6	7	8	9
A	HUTK	XAJ	FSO	WL	GV	QMD	BI	YR	PC	EN
B	GTPU	DIS	WKN	YB	LC	FHO	JE	AQ	MX	RV
C	CXFR	HLY	UMA	GN	TV	IJO	QS	PW	EK	DB
D	HXMA	YUW	SLC	EB	TN	QKV	RG	PJ	IF	OD
E	EYOK	FRI	UGA	CN	BQ	VST	JH	WM	DX	PL
F	IRMB	QNJ	SKV	OU	WA	EDG	TP	FY	XL	CH
G	ABHM	ENW	ODG	XI	FL	SUJ	RY	QP	KT	VC
H	MPTF	BQD	NOY	IG	JU	HEL	KV	SR	WC	XA
I	QLCU	XNE	FAH	SV	DI	BOR	YW	KT	GJ	PM
J	IYPO	HNQ	AEG	JF	KB	LSW	UX	VD	TR	MC
K	BMDR	JQS	VOI	NL	WY	ECP	FG	HT	XU	AK
L	GEON	YLC	DRS	KM	JV	UWA	PT	BF	IX	HQ
M	IJDS	MFY	AUG	EX	KN	CHO	VT	PB	RW	QL
N	PTIL	YSM	EVO	GQ	WN	BCU	RF	DJ	XK	AH
O	NGQH	DRX	VIE	JP	WT	KFB	MC	LU	YO	SA
P	WFTI	PEG	DQR	KV	HO	ANY	MU	BJ	XL	CS
Q	JDCG	MNQ	IHT	FY	XO	RBP	SA	KL	UW	VE
R	ROVE	WDL	TAF	HQ	YM	USN	CI	BX	GJ	PK
S	YPXK	AER	LGB	OS	VD	WMI	HJ	CT	UQ	FN
T	CVTU	RHW	YXI	MF	JA	DPO	SL	GQ	BE	KN
U	MALB	FTC	QNP	JK	WY	HOS	EV	UR	IG	XD
V	THWN	RUK	LMP	DI	BX	FYQ	GE	VA	OS	CJ
W	NEHC	XJT	QUO	WL	KG	IDV	MR	YF	PB	AS
X	RCBN	EXI	TJF	DW	OM	AQK	SY	UH	PV	LG
Y	FAMC	ULE	RQH	PX	NW	IVY	BT	DS	OG	JK

NAVAIDS

Id	Name	Channel	Position	Elevation
BCE	Bryce Canyon	75	N3741.35 W11218.23	9040
BIH	Bishop	33	N3722.62 W11821.99	4114
BLD	Boulder	114	N3559.75 W11451.82	3650
BTY	Beatty	94	N3648.54 W11644.86	2925
CDC	Cedar City	120	N3747.24 W11304.90	5463
DAG	Daggett	79	N3457.75 W11634.69	1760
EED	Needles	99	N3445.96 W11428.43	650
GFS	Goffs	91	N3507.87 W11510.59	4019
GRL	Groom Lake	18	N3713.91 W11548.16	4475
HEC	Hector	74	N3447.83 W11627.78	1854
ILC	Wilson Creek	110	N3815.02 W11423.65	9318
INS	Creech AFB	87	N3635.20 W11540.12	3101
LAS	McCarran Intl	116	N3604.78 W11509.59	2142
LSV	Nellis	12	N3614.68 W11501.50	1864
MLF	Milford	58	N3821.62 W11300.79	4977
MMM	Mormon Mesa	90	N3646.16 W11416.65	2120
MVA	Mina	98	N3833.92 W11801.97	7860
OAL	Coale Dale	124	N3800.20 W11746.23	4800
PGS	Peach Springs	57	N3537.48 W11332.67	4754
TPH	Tonopah Muni	119	N3801.84 W11702.01	5330
TQQ	Silverbow	77	N3748.00 W11647.00	5500
UTI	St George	23	N3705.29 W11335.53	2871



RWY 3L-21R
 PCN 46 R/C/W/T
 RWY 3R-21L
 PCN 51 R/C/W/T
 2017

PAR	RWY	CAT	MINIMA	ARP	ELEV	Scale
	21L	A B D E	2057 - 0.8 200 (200-0.8/1.6) GS 3°	36° 14.060° N 115° 01.058° W	1857 [ft] 566 [m]	0 300 600 900 1200 1500 [m] 0 1000 2000 3000 4000 5000 [ft]
	3R	A B D E	2057 - 0.8 200 (200-0.8/1.6) GS 3°			
SRA	21R	A C D E	2257 - 1.2 350 (350-1.2/1.6)			
	3L	A C D E	2257 - 1.2 350 (350-1.2/1.6)			

RWY	TORA	TODA	ASDA	LDA	PSN	THR	ALS
21L	10051 [ft] 3063 [m]	11051 [ft] 3368 [m]	11051 [ft] 3368 [m]	10051 [ft] 3063 [m]	36°14.043' N	115°01.018' W	⊕
3R	10120 [ft] 3084 [m]	11120 [ft] 3398 [m]	11120 [ft] 3398 [m]	10120 [ft] 3084 [m]	36°13.029' N	115°02.038' W	

ATIS	NELLIS GROUND	NELLIS TOWER	NELLIS CONTROL	TACAN	ILS RWY 21L	NELLIS EAST	NELLIS WEST
270.100 MHz	275.800 121.800	327.000 132.55	317.525	LSV 12X	109.10 Mhz	384.400	385.000

FYTTR LOW VISUAL OPERATION CHART | VALID 2014

ATIS
270.100
NELLIS GROUND
275.800
NELLIS TOWER
327.000
NELLIS CONTROL
317.525
NELLIS DEP/APP EAST
384.400
BLACKJACK
377.800

CAUTION: If unable to comply with restrictions advise ATC prior to departure.



VMC ONLY

PILOT RESPONSIBLE FOR TERRAIN AVOIDANCE

① 4 NM from RWY 3L/R

BEATTY
Chan 94 BTY

RANGE 64/65
RANGE 63

TUCKY

R-2508

LSV R-269

FYTTR
N3621.44
W11541.47

BTY R-105

DME 15 ARC
5000

270°

7233

FLEX
LSV 337/5

2086 M

① 3000

NELLIS
Chan 12 LSV

R-255

6000

5000

R-269

300°

4131

v.130602 NITTR NAV CHART

DEPARTURE ROUTE DESCRIPTION

TAKEOFF RWY 3L/R:

- Remain below 3,000' MSL until north of Race Track and turned westbound.
- Turn left within 4NM of Nellis direct FLEX. Fly north of FLEX and turn left heading 270°.
- Intercept LSV 15 DME ARC at or below 5,000' MSL.
- ARC south, intercept LSV R-269 outbound. Maintain VFR.

TAKEOFF RWY 21L/21R:

- Follow Noise Abatement Procedures.
- Fly runway heading until past Golf Course, turn right heading 300°.
- Cross LSV R-255 between 5,000' and 6,000' , intercept and proceed outbound on the LSV R-269.Recommend climb to 8,500' MSL or appropriate VFR altitude for overflight of North Las Vegas Training Area. Fly routing for appr. mission/transition.

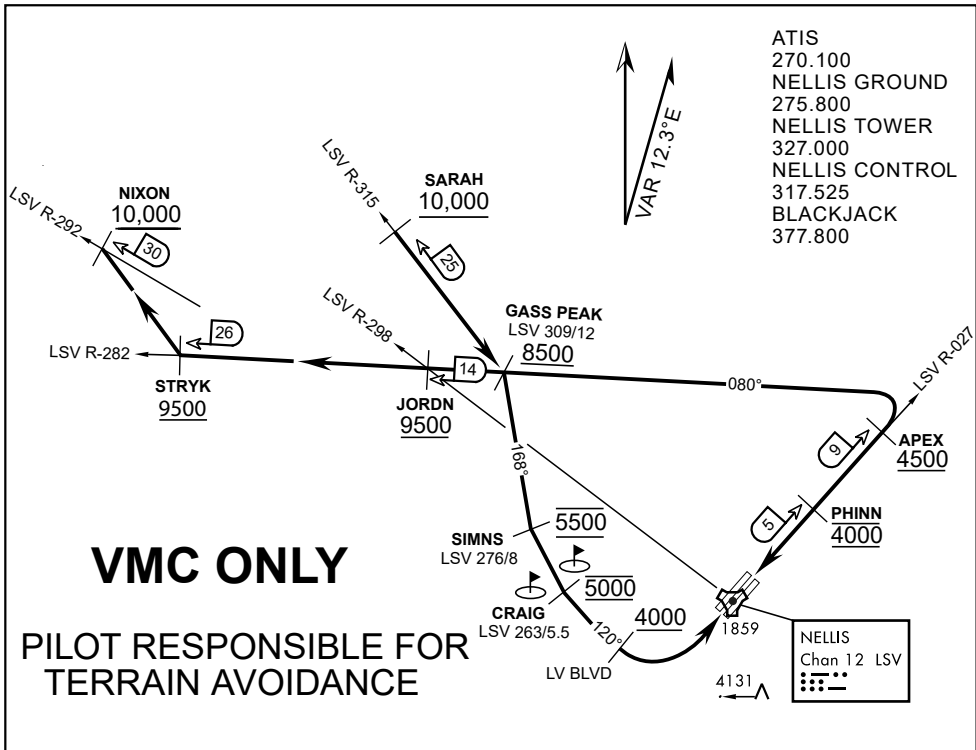
TRANSITIONS:

R-4806: Turn right at the LSV 269/20 direct to assigned ranges.

BEATTY: Turn right at FYTTR direct BTY via the BTY R-105

R-2508: Turn right at the FYTTR, intercept the BTY 105/30, direct TUCKY, then direct R-2508

FYTTR DEPARTURE AND TRANSITIONS (FYTTR LOW)



ATIS
270.100
NELLIS GROUND
275.800
NELLIS TOWER
327.000
NELLIS CONTROL
317.525
BLACKJACK
377.800

VMC ONLY

**PILOT RESPONSIBLE FOR
TERRAIN AVOIDANCE**

APPROACH ROUTE DESCRIPTION

APPROACH RWY 3L/R

Cross STRYK at or above 9,500' MSL, proceed direct GASS PEAK. Cross JORDN at or above 9,500' MSL, cross GASS PEAK at or above 8,500' MSL. Proceed direct SIMNS and cross at 5,500' MSL. Cross Las Vegas Blvd at or above 4,000' MSL then to 3,500' MSL for Initial. Remain within 4 DME if LSV on turn to final.

VFR STRAIGHT-IN RWY 3L/R

Depart CRAIG & descend to be at 3,000' MSL by Las Vegas Blvd. Do not descend below 3,000' MSL until within 5 DME of LSV or 4 NM of the runway on turn to final.

APPROACH RWY 21L/R

Cross STRYK at or above 9,500' MSL, proceed direct GASS PEAK. Cross JORDN at or above 9,500' MSL, cross GASS PEAK at or above 8,500' MSL. Cross APEX at or above 4,500' MSL then direct 5NM initial. Descend to cross PHINN at 4,000' MSL, Inside 5 NM descend to 3,500' MSL.

VFR STRAIGHT-IN RWY 21L/R

Cross APEX at 4,000' MSL. Descend to be at 3,000' MSL at PHINN. Descend to 3,000' MSL at LSV 027/5.

RANGE 63B EXIT

SOUTH: Via NIXON at or above 10,000' MSL, then direct STRYK.

EAST: Via SARAH at or above 10,000' MSL, then direct GASS PEAK.