

**MISSION DATA CARD**

OPORD		Callsign		Mission		Date/Time	
3008/2024		Raptor 2		Training		231000JUN24	
Task						Freq	
AO						134.0	
Departure				Recovery			
FYTTR THREE				ILS or LOC/DME X RWY 21L			
#	Callsign	Pilot		IFF	TCN	LSR	NET
-1	Raptor 2-1	Butcher		1621	1Y	1621	

**LOADOUT**

A/A	2xA120C				GUN	100% HEI-T	
A/G	4xM82				CHF	120	
POD	A131				FLR	0	
TKS	2xFT300				FUEL	100%	

**TOLD**

	Takeoff	Target	Joker	Bingo	Land
FUEL	11169				

**AIRBASES**

	Name	TCN	ATIS	GND	TWR	RWY	Elev	ILS
Dep	Nellis AFB	12X	270.1	275.8	327.0	21L	1850	109.1
Arr	Nellis AFB	12X	270.1	275.8	327.0	21L	1850	109.1
Div	Creech AFB	87X	290.45	275.8	360.6			

**FLIGHTPLAN**

#	Name	Navaid/Coords/DME	ALT	TOT
1	FYTTR	LSV 269/33 (N36 21.440 W115 41.470)	12000	
2	KRYSS	N36 30.369 W114 44.190	9000	
3	ROTSE	N36 20.025 W114 55.561	4200	

**SUPPORT****Tanker**

Callsign	TCN	Freq	ALT	TAS
TEXACO 2	95Y	289.7	FL220	420
Pos	Pegasus.1: CDC 166/102 (N3730 W11440)			

**RADIO CHANNELS**

#	Freq	Name
1		Flight/Squadron specific
2	289.4	Nellis Clearance Delivery
3	275.8	Nellis Ground
4	327.0	Nellis Tower
5	385.4	Nellis Approach/Departure West
6	273.55	Nellis Approach/Departure East
7	317.525	Nellis Control -- Sally
8	254.4	Nellis Control-- Lee
9	305.6	SOF Bullseye
10	343.725	EMERGENCY SINGLE FRQ
11	270.1	Nellis ATIS
12	360.625	Creech AFB Tower
13	250.1	HAVE QUICK 13
14	251.1	HAVE QUICK 14
15	252.1	HAVE QUICK 15
16	377.8	Blackjack
17	265.0	KC-135 AR-641A
18	360.8	KC-135MPRS AR-635
19	319.8	KC-135MPRS AR-625
20	300.05	KC-135 AR-231V

**RAMROD**

0	1	2	3	4	5	6	7	8	9
E	X	H	U	M	A	T	I	O	N

**KTC 1400 C**

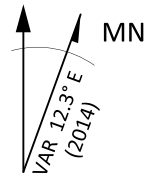
	0	1	2	3	4	5	6	7	8	9
A	IJFQ	UTK	GNE	YX	PL	DRO	SM	AW	CH	BV
B	LORN	IFC	JXA	UB	QG	YMW	KE	DS	TV	HP
C	DFIS	TXJ	RWY	QO	KG	ABE	NV	CP	ML	UH
D	GSHU	DRB	FLM	IA	XQ	TEJ	VN	WO	KY	PC
E	DAKE	WCL	RNI	SU	XO	QBG	YJ	MF	TH	PV
F	CEHG	AFQ	ULN	JW	IP	KTY	XB	VD	RS	MO
G	VHAG	MPJ	ETI	BR	DX	YNC	WS	KF	QU	LO
H	SGBE	VIW	HXF	CQ	NK	PTY	DO	JR	MU	LA
I	CPOW	LDR	KIA	XQ	SY	UMF	VN	BG	HT	EJ
J	LPMT	YXD	RQH	KJ	FE	VBO	IU	NC	AS	GW
K	QTSX	PMK	JNC	AG	RO	VEW	LI	FH	YU	BD
L	MHXQ	FIE	DGT	LK	PY	JVR	OC	AU	SN	WB
M	VULG	YBQ	CFH	PX	IW	OND	RE	JA	MS	TK
N	EUWN	TVK	ACD	LO	GR	MYQ	SX	JB	HI	PF
O	WQGD	TFX	JVK	YE	BP	RLA	IM	HC	NO	US
P	DXQL	RFJ	CHK	SV	MU	OYG	NP	IT	EB	WA
Q	FUVY	RHK	PAI	CS	BE	LGM	TX	JQ	NW	OD
R	JCND	XUS	ERT	QV	KA	FHB	WY	MG	LP	IO
S	FJHM	BQW	UAI	NP	LX	KRV	EO	DS	CT	YG
T	FXYR	CMN	BWJ	HP	TI	ULA	GQ	DO	EK	VS
U	JXGB	YHD	LES	FV	QK	TOW	MA	IP	UC	NR
V	IJBL	SDP	FEA	NW	YT	RUV	HM	OG	KC	XQ
W	HAJC	RTI	LOS	GK	XF	WDP	VQ	YE	MU	BN
X	LTIH	PEW	MJC	BO	FX	QYR	VD	NK	SU	GA
Y	HJMB	RTP	UKW	YQ	NL	AEI	XF	GD	OC	VS

**NAVAIDS**

<b>Id</b>	<b>Name</b>	<b>Channel</b>	<b>Position</b>	<b>Elevation</b>
BCE	Bryce Canyon	75	N3741.35 W11218.23	9040
BIH	Bishop	33	N3722.62 W11821.99	4114
BLD	Boulder	114	N3559.75 W11451.82	3650
BTY	Beatty	94	N3648.54 W11644.86	2925
CDC	Cedar City	120	N3747.24 W11304.90	5463
DAG	Daggett	79	N3457.75 W11634.69	1760
EED	Needles	99	N3445.96 W11428.43	650
GFS	Goffs	91	N3507.87 W11510.59	4019
GRL	Groom Lake	18	N3713.91 W11548.16	4475
HEC	Hector	74	N3447.83 W11627.78	1854
ILC	Wilson Creek	110	N3815.02 W11423.65	9318
INS	Creech AFB	87	N3635.20 W11540.12	3101
LAS	McCarran Intl	116	N3604.78 W11509.59	2142
LSV	Nellis	12	N3614.68 W11501.50	1864
MLF	Milford	58	N3821.62 W11300.79	4977
MMM	Mormon Mesa	90	N3646.16 W11416.65	2120
MVA	Mina	98	N3833.92 W11801.97	7860
OAL	Coale Dale	124	N3800.20 W11746.23	4800
PGS	Peach Springs	57	N3537.48 W11332.67	4754
TPH	Tonopah Muni	119	N3801.84 W11702.01	5330
TQQ	Silverbow	77	N3748.00 W11647.00	5500
UTI	St George	23	N3705.29 W11335.53	2871



RWY 3L-21R  
 PCN 46 R/C/W/T  
 RWY 3R-21L  
 PCN 51 R/C/W/T  
 2017



PAR	RWY	CAT	MINIMA	ARP	ELEV	Scale
	21L	A B D E	2057 - 0.8 200 (200-0.8/1.6) GS 3°	36° 14.060° N 115° 01.058° W	1857 [ft] 566 [m]	0 300 600 900 1200 1500 [m] 0 1000 2000 3000 4000 5000 [ft]
	3R	A B D E	2057 - 0.8 200 (200-0.8/1.6) GS 3°			
	21R	A C D E	2257 - 1.2 350 (350-1.2/1.6)			
	3L	A C D E	2257 - 1.2 350 (350-1.2/1.6)			

RWY	TORA	TODA	ASDA	LDA	PSN	THR	ALS
21L	10051 [ft] 3063 [m]	11051 [ft] 3368 [m]	11051 [ft] 3368 [m]	10051 [ft] 3063 [m]	36°14.043' N	115°01.018' W	⊕
3R	10120 [ft] 3084 [m]	11120 [ft] 3398 [m]	11120 [ft] 3398 [m]	10120 [ft] 3084 [m]	36°13.029' N	115°02.038' W	

ATIS	NELLIS GROUND	NELLIS TOWER	NELLIS CONTROL	TACAN	ILS RWY 21L	NELLIS EAST	NELLIS WEST
270.100 MHz	275.800   121.800	327.000   132.55	317.525	LSV 12X	109.10 Mhz	384.400	385.000

**FYTTTR THREE DEPARTURE** IFR CHART | VALID 2014 LAS VEGAS, NEVADA

ATIS  
270.100  
NELLIS GROUND  
275.800  
NELLIS TOWER  
327.000  
NELLIS CONTROL  
317.525  
NELLIS DEP/APP EAST  
384.400  
BLACKJACK  
377.800



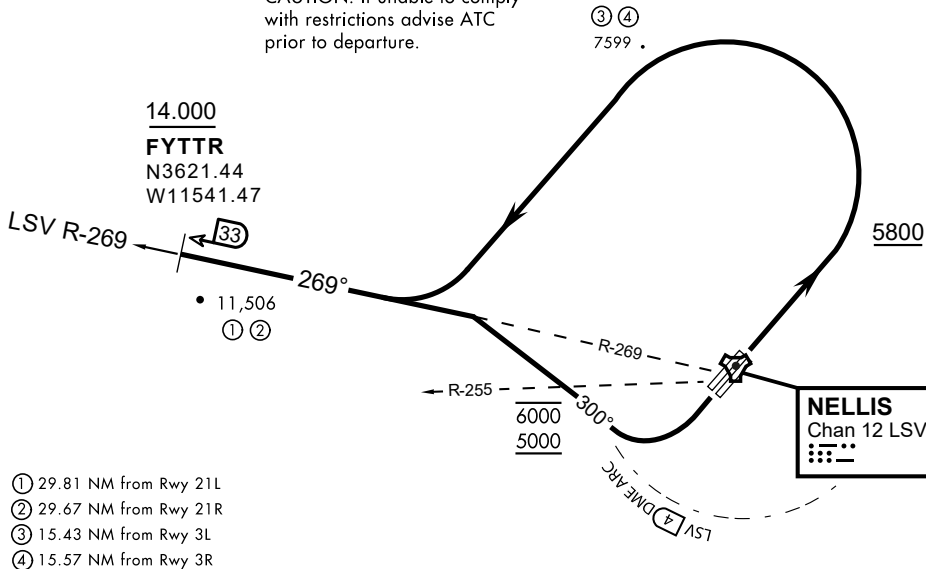
Rwy	Knots	60	120	180	240	300	360
3L (a)	V/V(fpm)	394	788	1182	1576	1970	2364
3R (a)	V/V(fpm)	392	784	1176	1568	1960	2352
21L (b)	V/V(fpm)	388	776	1164	1552	1940	2328
21R (b)	V/V(fpm)	390	780	1170	1560	1950	2340

Minimum Climb Rate

(a) to 9300

(b) to 13 500

CAUTION: If unable to comply with restrictions advise ATC prior to departure.



- ① 29.81 NM from Rwy 21L
- ② 29.67 NM from Rwy 21R
- ③ 15.43 NM from Rwy 3L
- ④ 15.57 NM from Rwy 3R

**DEPARTURE ROUTE DESCRIPTION**

TAKEOFF RWY 3L/R

- Fly runway heading until reaching 5,800'.
- Then climbing left turn to intercept LSV TACAN R-269 outbound.
- Cross FYTTTR at or above 14,000' or as assigned, then via assigned route.

TAKEOFF RWY 21L/21R

- Turn right to intercept LSV TACAN R-269 outbound.
- Remain within LSV 4 DME until joining LSV R-269
- Cross R-255 between 5,000' and 6,000'.
- Cross FYTTTR at or above 14,000' or as assigned, then via assigned route.

**NOISE ABATEMENT PROCEDURES:**

Fly according Nellis Noise Abatement instructions as published



LAS VEGAS, NEVADA

# ILS or LOC X RWY 21L

LOC I-DIQ <b>109.1</b>	APCH CRS <b>209°</b>	Rwy ldg 21L <b>10,051</b>	21R <b>10,120</b>
		TDZE <b>1865</b>	<b>1869</b>
		Arprt Elev <b>1869</b>	

AL-227 (USAF)

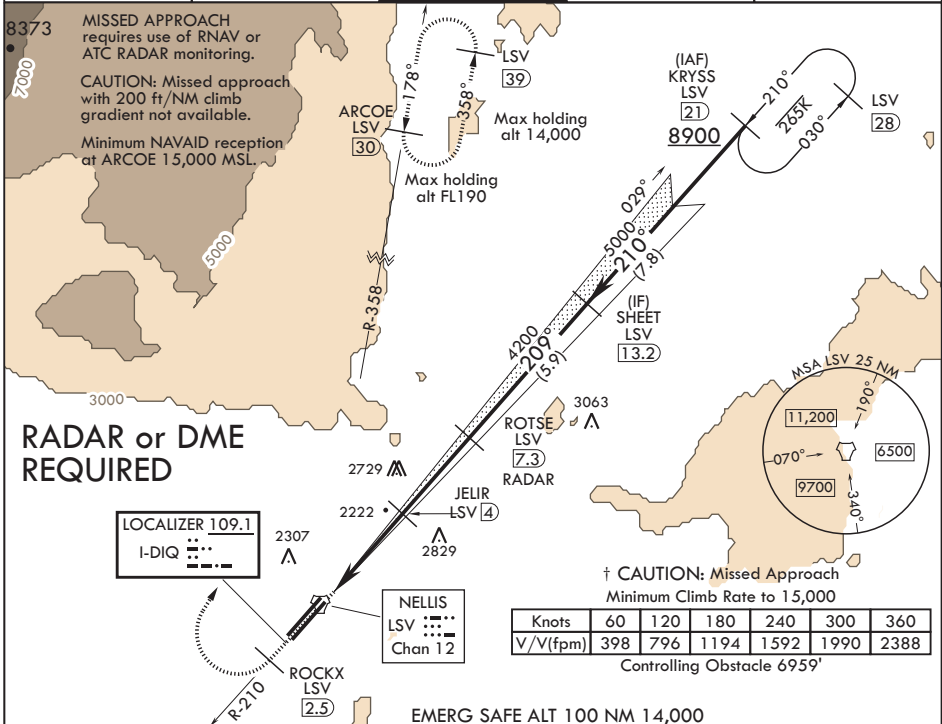
NELLIS AFB (KLSV)

⚠ \* When ALS inop, increase all CAT RVR to 40, vis to 3/4 mile.  
 \*\* When ALS inop, increase CAT AB RVR to 55, vis to 1 mile, CAT CDE vis to 1 3/4 miles.  
 \*\*\* Circling not authorized E of Rwy 3R-21L.



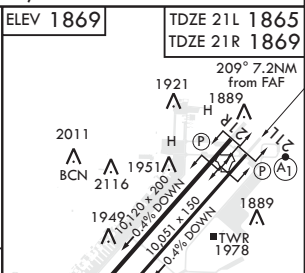
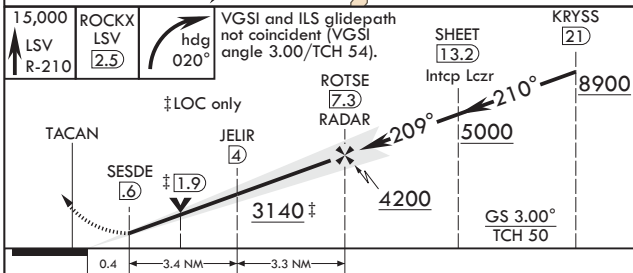
† MISSED APPROACH: Climb to 15,000, intercept LSV TACAN R-210 to 2.5 DME (ROCKX), then climbing right turn heading 020° to join LSV TACAN R-358 to ARCOE and hold, continue climb in hold to 15,000. Missed approach not for civil use.

ATIS <b>270.1</b>	APP CON <b>124.95 273.55</b>	TOWER <b>132.55 327.0</b>	GND CON <b>121.8 275.8</b>	CLNC DEL <b>120.9 289.4</b>
----------------------	---------------------------------	------------------------------	-------------------------------	--------------------------------



Knots	60	120	180	240	300	360
V/f (fpm)	398	796	1194	1592	1990	2388

Controlling Obstacle 6959'



CATEGORY	A	B	C	D	E
S-ILS 21L*	2065/24		200	(200-1/2)	
S-LOC 21L**	2480/24	615 (700-1/2)	2480-1 3/4	615	(700-1 3/4)
SIDESTEP 21R	2500-1	631 (700-1)	2500-1 3/4	631	(700-1 3/4)
CIRCLING***	2480-1 611 (700-1)	2620-1 751 (800-1)	2620-2 1/4 751 (800-2 1/4)	2840-3 971 (1000-3)	3040-3 1171 (1200-3)

HIRL all Rwys	⚠ 2022				
FAF to MAP 6.7 NM					
Knots	60	90	120	150	180
Min:Sec	6:42	4:28	3:21	2:41	2:14

LAS VEGAS, NEVADA

36°14'N - 115°02'W

NELLIS AFB (KLSV)

Amdt 9 03JAN19

# ILS or LOC X RWY 21L

SW-4, 05 DEC 2019 to 02 JAN 2020

SW-4, 05 DEC 2019 to 02 JAN 2020



INDIAN SPRINGS, NEVADA

TACAN INS Chan 87	APCH CRS 294 °	Rwy Idg TDZE Arprt Elev	9002 3133 3113
----------------------	-------------------	-------------------------------	----------------------

INDIAN SPRINGS AF AUX (KINS)

**▽** \* MISSED APPROACH: Direct INS then outbound INS **t8:2#DME** climbing to 10,000.

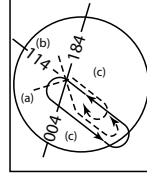
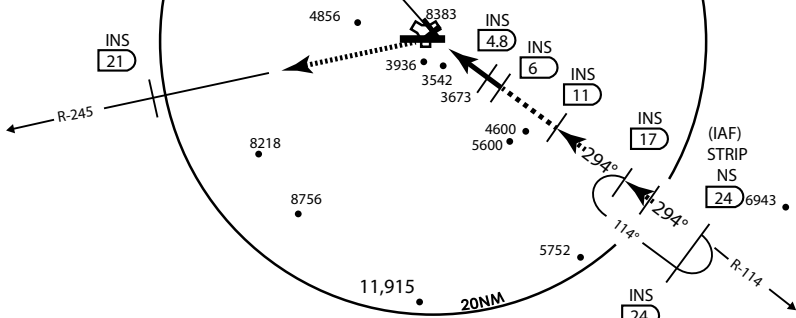
NELLIS CON -	INDIAN SPRINGS TOWER 118.30 <b>U</b> 60.60	GND CON -
-----------------	---	--------------

**NOT FOR CIVIL USE**

5975 •

**CAUTION:** Final approach course does not cross Runway centerline prior to threshold. Maneuvering right of course required prior to landing.

CREECH AFB  
Chan 87 INS



Modified by vJaBoG 66 for use with DCS

Modified by vJaBoG 66 for use with DCS

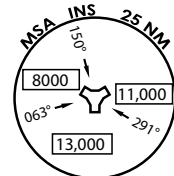
NOT FOR REAL LIFE NAVIGATION

NOT FOR REAL LIFE NAVIGATION

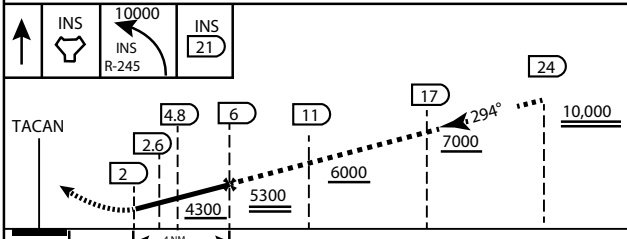
\* CAUTION: Missed Approach Climb Rate to 4,700

Knots	60	120	180	240	300	360
V/V (fpm)	450	900	1350	1800	2250	2700

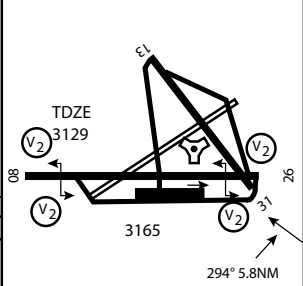
Controlling Obstacle 3936



EMERG SAFE ALT 100 NM 14,000



ELEV 3129



CATEGORY	A	B	C	D	E
S-26	3800-2 ¼	697 (700 2 ½)			3800-2 ¼ 697 (700-2 ½)
CIRCLING	NOT AUTHORIZED				

MIRL Rwy 8-26 **0**

CITY OF INDIAN, NEVADA

INDIAN SPRINGS AF AUX (KINS)



