

**MISSION DATA CARD**

OPORD		Callsign		Mission		Date/Time	
3007/2024		Nazgul 6		CAS		172000JUN24	
Task	CAS Workshop					Freq	
AO	R76					262.45	
Departure				Recovery			
FYTTR THREE				HI-ILS or LOC/DME Z RWY 21L			
#	Callsign	Pilot	IFF	TCN	LSR	NET	
-1	Nazgul 6-1	Striver/Uta	1161	1Y	1561		
-2	Nazgul 6-2	Tank/TaB	1162	64Y	1562		
-3	Nazgul 6-3	Repsus/Lempo	1163	64X	1563		
-4	Nazgul 6-4	Razorback	1164	1X	1564		

**LOADOUT**

A/A	2xA9M, 2xA120C			GUN	100% SAPHEI
A/G	2xG10, G24, 2xG31B			CHF	120
POD	TGT, NAV			FLR	60
TKS				FUEL	100%

**TOLD**

	Takeoff	Target	Joker	Bingo	Land
FUEL	22588				

**AIRBASES**

	Name	TCN	ATIS	GND	TWR	RWY	Elev	ILS
Dep	Nellis AFB	12X	270.1	275.8	327.0	21L	1850	109.1
Arr	Nellis AFB	12X	270.1	275.8	327.0	21L	1850	109.1

**FLIGHTPLAN**

#	Name	Navaid/Coords/DME	ALT	TOT
1	FLEX	LSV 337/5 (N36 18.620 W115 02.360)	4000	
2	FYTTR	LSV 269/33 (N36 21.440 W115 41.470)	12000	
3	Range 76	N37 24.499 W116 54.090	5000	
4	IP + TARGETS	N10 10 W100 10		
5	ECHO Point	N20 20 W100 10		
6	BELTED PK	N37 34 W116 04.500	20000	
7	Cedar Peak	TQQ 77X 092/56 (N37 42 W116 20)	20000	
8	NW Container	N37 28.049 W115 59.961	20000	
9	NE Container	N37 28.049 W115 34.974	20000	
10	SE Container	N37 06.116 W115 34.912	20000	
11	SW Container	N37 06.067 W116 00.023	20000	
12	NIXON	LSV 12X 292/30 (N36 32.010 W115 32.250)	10000	
13	STRYK	LSV 12X 282/26 (N36 25.620 W115 30.700)	9500	
14	GASS PEAK	LSV 12X 309/12 (N36 24.140 W115 10.660)	8500	
15	APEX	LSV 12X 027/09 (N36 21.580 W114 54.340)	4500	
16	PHINN	N36 18.427 W114 57.408	4000	

**COMMS**

Radio	Usage
1	262.45
2	11 / 4 / 16 / 135.25 / 16 / 4

## NOTES

Geänderte Wegpunktreihenfolge beachten!

**OTHER FLIGHTS**

Callsign	Mission	Airframe	Freq	TCN	Grpld	Laser
Tiger 1	CAS	2x F/A-18C	261.15	1/64	1	155X
	AO	R64	Task	CAS Workshop		
Ninja* 5	JTAC	2x Ground	35.5	1/64		157X
	AO	R64	Task	Hogs & Hornets		
Playboy* 6	Training	1x Ground	135.25	1/64		170X
	AO	R76	Task	Mudhens		
Claw 5	Training	4x AH-64D	133.5	1/64		125X
	AO	Range 63	Task	CAS		

**RADIO CHANNELS**

#	Freq	Name
1		Flight/Squadron specific
2	289.4	Nellis Clearance Delivery
3	275.8	Nellis Ground
4	327.0	Nellis Tower
5	385.4	Nellis Approach/Departure West
6	273.55	Nellis Approach/Departure East
7	317.525	Nellis Control -- Sally
8	254.4	Nellis Control-- Lee
9	305.6	SOF Bullseye
10	343.725	EMERGENCY SINGLE FRQ
11	270.1	Nellis ATIS
12	360.625	Creech AFB Tower
13	250.1	HAVE QUICK 13
14	251.1	HAVE QUICK 14
15	252.1	HAVE QUICK 15
16	377.8	Blackjack
17	265.0	KC-135 AR-641A
18	360.8	KC-135MPRS AR-635
19	319.8	KC-135MPRS AR-625
20	300.05	KC-135 AR-231V

**RAMROD**

0	1	2	3	4	5	6	7	8	9
S	L	U	M	B	E	R	I	N	G

**KTC 1400 C**

	0	1	2	3	4	5	6	7	8	9
A	VJLU	KXI	SFC	BM	RH	GAN	OW	TY	PE	DQ
B	FATB	YCD	WHS	RJ	VI	LKO	EG	MX	QU	PN
C	RBIE	OUQ	YKF	XJ	WG	CVL	PT	ND	AM	SH
D	HQJE	VFL	XRD	YT	PB	UCS	OW	GN	KI	AM
E	HUDL	BRT	YJS	FV	CO	GEA	QX	NI	KP	MW
F	FPVN	KRQ	LDM	JS	EB	AXI	GT	CH	YW	OU
G	CUPV	NGB	TAL	IJ	RO	XMQ	KD	HW	FY	SE
H	PFBA	YHQ	XDR	GK	UM	ITL	CW	JS	OV	EN
I	FBRE	QAM	YWS	TG	KD	UPI	HC	VL	NJ	OX
J	KFDV	NPU	EHC	AT	JR	MGX	QB	IL	OS	WY
K	OHXC	TUV	DIQ	NK	FL	SEG	BW	JA	YM	RP
L	KUOH	EYN	MFB	AL	RQ	GIS	VJ	DT	CP	WX
M	YRES	XGQ	AMC	TH	OI	BKL	WP	FN	DU	VJ
N	KPQY	RTD	OUE	NC	VF	JXI	GA	BS	LH	MW
O	JVHT	DBX	PKL	CN	UY	ARS	ME	WO	GQ	IF
P	NWAI	FCE	USK	XD	HR	VBL	QP	OY	TJ	GM
Q	UQWL	XDT	HRJ	CM	SP	YIN	AG	KB	VF	EO
R	JFKV	RPD	NAM	CI	QX	STO	UW	BE	YG	LH
S	YNRM	OUH	JBL	QW	IK	ACG	VD	PS	XE	TF
T	BRAE	KIQ	HMS	FX	UY	GWJ	TP	LN	CD	OV
U	QMEL	GFS	VBA	RY	JC	IDW	OT	XP	HN	KU
V	OQFV	GKB	TAP	HY	CI	LRN	JW	XM	SD	EU
W	PGCR	IXM	WEY	FB	UD	NQT	AO	HS	KL	VJ
X	KAEX	VPS	NBT	CD	GI	FHJ	YL	UQ	RW	OM
Y	BUHP	FSG	DOX	AY	JL	KRC	ME	VI	WN	TQ

## NAVAIDS

Id	Name	Channel	Position	Elevation
BCE	Bryce Canyon	75	N3741.35 W11218.23	9040
BIH	Bishop	33	N3722.62 W11821.99	4114
BLD	Boulder	114	N3559.75 W11451.82	3650
BTY	Beatty	94	N3648.54 W11644.86	2925
CDC	Cedar City	120	N3747.24 W11304.90	5463
DAG	Daggett	79	N3457.75 W11634.69	1760
EED	Needles	99	N3445.96 W11428.43	650
GFS	Goffs	91	N3507.87 W11510.59	4019
GRL	Groom Lake	18	N3713.91 W11548.16	4475
HEC	Hector	74	N3447.83 W11627.78	1854
ILC	Wilson Creek	110	N3815.02 W11423.65	9318
INS	Creech AFB	87	N3635.20 W11540.12	3101
LAS	McCarran Intl	116	N3604.78 W11509.59	2142
LSV	Nellis	12	N3614.68 W11501.50	1864
MLF	Milford	58	N3821.62 W11300.79	4977
MMM	Mormon Mesa	90	N3646.16 W11416.65	2120
MVA	Mina	98	N3833.92 W11801.97	7860
OAL	Coale Dale	124	N3800.20 W11746.23	4800
PGS	Peach Springs	57	N3537.48 W11332.67	4754
TPH	Tonopah Muni	119	N3801.84 W11702.01	5330
TQQ	Silverbow	77	N3748.00 W11647.00	5500
UTI	St George	23	N3705.29 W11335.53	2871



RWY 3L-21R  
 PCN 46 R/C/W/T  
 RWY 3R-21L  
 PCN 51 R/C/W/T  
 2017

PAR	RWY	CAT	MINIMA		ARP	ELEV	Scale 1:35'500	
	21L	A B D E	2057 - 0.8 200 (200-0.8/1.6)	GS 3°	36° 14.060° N 115° 01.058° W	1857 [ft] 566 [m]	0 300 600 900 1200 1500 [m]	
	3R	A B D E	2057 - 0.8 200 (200-0.8/1.6)	GS 3°			0 1000 2000 3000 4000 5000 [ft]	
SRA	21R	A C D E	2257 - 1.2 350 (350-1.2/1.6)					
	3L	A C D E	2257 - 1.2 350 (350-1.2/1.6)					

RWY	TORA	TODA	ASDA	LDA	PSN	THR	ALS
21L	10051 [ft] 3063 [m]	11051 [ft] 3368 [m]	11051 [ft] 3368 [m]	10051 [ft] 3063 [m]	36°14.043' N	115°01.018' W	⊕
3R	10120 [ft] 3084 [m]	11120 [ft] 3398 [m]	11120 [ft] 3398 [m]	10120 [ft] 3084 [m]	36°13.029' N	115°02.038' W	

ATIS	NELLIS GROUND	NELLIS TOWER	NELLIS CONTROL	TACAN	ILS RWY 21L	NELLIS EAST	NELLIS WEST
270.100 MHz	275.800   121.800	327.000   132.55	317.525	LSV 12X	109.10 Mhz	384.400	385.000



**FYTTR THREE DEPARTURE** IFR CHART | VALID 2014 LAS VEGAS, NEVADA

ATIS  
270.100  
NELLIS GROUND  
275.800  
NELLIS TOWER  
327.000  
NELLIS CONTROL  
317.525  
NELLIS DEP/APP EAST  
384.400  
BLACKJACK  
377.800



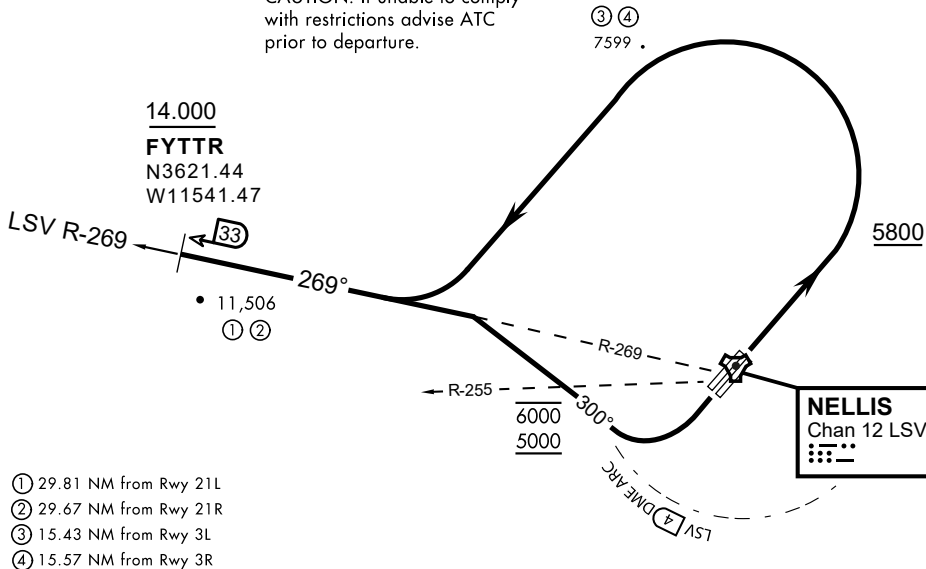
Rwy	Knots	60	120	180	240	300	360
3L (a)	V/V(fpm)	394	788	1182	1576	1970	2364
3R (a)	V/V(fpm)	392	784	1176	1568	1960	2352
21L (b)	V/V(fpm)	388	776	1164	1552	1940	2328
21R (b)	V/V(fpm)	390	780	1170	1560	1950	2340

Minimum Climb Rate

(a) to 9300

(b) to 13 500

CAUTION: If unable to comply with restrictions advise ATC prior to departure.



- (1) 29.81 NM from Rwy 21L
- (2) 29.67 NM from Rwy 21R
- (3) 15.43 NM from Rwy 3L
- (4) 15.57 NM from Rwy 3R

v.0113 NOV20 NTR NAV CHART



**DEPARTURE ROUTE DESCRIPTION**

TAKEOFF RWY 3L/R

- Fly runway heading until reaching 5,800'.
- Then climbing left turn to intercept LSV TACAN R-269 outbound.
- Cross FYTTR at or above 14,000' or as assigned, then via assigned route.

TAKEOFF RWY 21L/21R

- Turn right to intercept LSV TACAN R-269 outbound.
- Remain within LSV 4 DME until joining LSV R-269
- Cross R-255 between 5,000' and 6,000'.
- Cross FYTTR at or above 14,000' or as assigned, then via assigned route.

**NOISE ABATEMENT PROCEDURES:**

Fly according Nellis Noise Abatement instructions as published

LAS VEGAS, NEVADA

# HI-ILS or LOC Z RWY 21L

LOC I-DIQ <b>109.1</b>	APCH CRS <b>209°</b>	Rwy ldg	21L	21R
		TDZE	<b>10,051</b>	<b>10,120</b>
		Arpt Elev	<b>1865</b>	<b>1869</b>

JAL-227 (USAF)

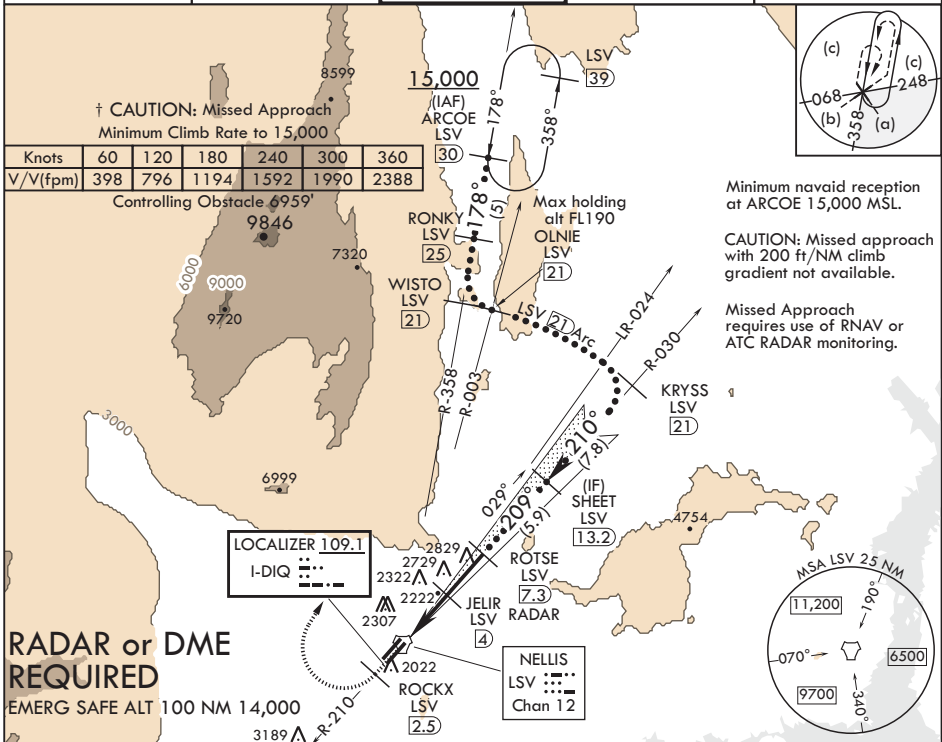
NELLIS AFB (KLSV)

† When ALS inop, increase CAT CDE RVR to 40, vis to 3/4 mile.  
 \*\* When ALS inop, increase CAT CDE vis to 1 3/4 miles.  
 \*\*\* Circling not authorized E of Rwy 3R-21L.



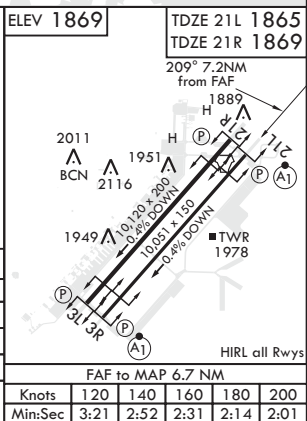
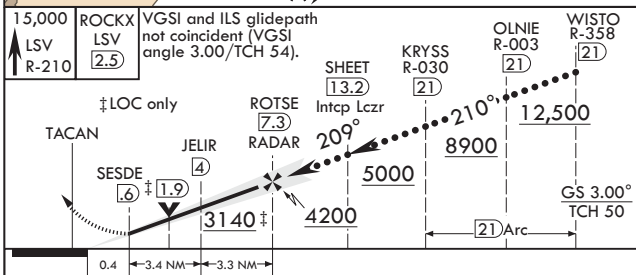
† MISSED APPROACH: Climb to 15,000, intercept LSV TACAN R-210 to 2.5 DME (ROCKX), then climbing right turn heading 020° to join LSV R-358 to ARCOE and hold, continue climb-in-hold to 15,000. Missed approach not for civil use.

ATIS <b>270.1</b>	APP CON <b>124.95 273.55</b>	TOWER <b>132.55 327.0</b>	GND CON <b>121.8 275.8</b>	CLNC DEL <b>120.9 289.4</b>
----------------------	---------------------------------	------------------------------	-------------------------------	--------------------------------



SW-4, 05 DEC 2019 to 02 JAN 2020

SW-4, 05 DEC 2019 to 02 JAN 2020



CATEGORY	C	D	E
S-ILS 21L*	2065-24	200	(200-1/2)
S-LOC 21L**	2480-1 3/4	615	(700-1 3/4)
SIDESTEP 21R	2500-1 3/4	631	(700-1 3/4)
⊕ CIRCLING***	2620-2 1/4 751 (800-2 1/4)	2840-3 971 (1000-3)	3040-3 1171 (1200-3)

LAS VEGAS, NEVADA

36°14'N - 115°02'W

NELLIS AFB (KLSV)

Amdt 8 03JAN19

# HI-ILS or LOC Z RWY 21L