

MISSION DATA CARD

OPORD		Callsign		Mission		Date/Time		
2998/2024		Raptor 2		Training		161000JUN24		
Task						Freq		
AO	use own charts					134.25		
Departure				Recovery				
RWY10 SID				none				
#	Callsign		Pilot		IFF	TCN	LSR	NET
-1	Raptor 2-1		Butcher		1721	1Y	1721	

LOADOUT

A/A	2xA120C				GUN	100% HEI-T	
A/G					CHF	120	
POD	A131, TGP				FLR	0	
TKS	2xFT300				FUEL	50%	

TOLD

	Takeoff	Target	Joker	Bingo	Land
FUEL	7587				

AIRBASES

	Name	TCN	ATIS	GND	TWR	RWY	Elev	ILS
Dep	Akrotiri AFB	107X	288.2	240.1	339.85	28	62	109.7
Arr	Ramat David AFB		118.4		118.6	27	125	
Div	Paphos Internationl	79X	127.3		353.8	29	40	108.9

FLIGHTPLAN

#	Name	Navaid/Coords/DME	ALT	TOT
1	ECHO	N34 42.600 E033 10	5000	
2	PAPA	N34 39.390 E032 46.480	5000	

COMMS

Radio	Usage
1	2, 3, 4, 16

SUPPORT**Tanker**

Callsign	TCN	Freq	ALT	TAS
TEXACO 2	44Y	244.78	FL150	250
	Pos	TEXACO2: (N3424 E03403)		
SHELL 3	93Y	278.75	FL170	215
	Pos	SHELL3: (N3436 E03419)		

RADIO CHANNELS

#	Freq	Name
1		Flight/Squadron specific
2	288.2	Akrotiri ATIS
3	240.1	Akrotiri Ground
4	339.85	Aktrotiri Tower
5	335.05	Akrotiri Approach
6	360.1	Incirlik Tower
7	371.35	Incirlik Ground
8	377.475	Incirlik ATIS
9		No Preset
10	127.3	Paphos ATIS
11	353.8	Paphos Tower
12	304.0	CVN-73 George Washington
13	302.0	LHA-1 Tarawa
14	259.0	CV-59 Forrestal
15		No Preset
16	377.8	Overlord
17	265.0	KC-135 Texaco-1 medium/slow
18	319.8	KC-135 Arco-1
19	360.8	KC-135MPRS Arco-2
20	256.0	S-3B Recovery Tanker

RAMROD

0	1	2	3	4	5	6	7	8	9
S	P	L	O	T	C	H	I	E	R

KTC 1400 C

	0	1	2	3	4	5	6	7	8	9
A	CRQM	GFJ	TAB	UV	PI	YEK	DX	HN	LO	SW
B	EBUN	CVR	KXG	MI	YH	STQ	OW	AJ	FL	DP
C	CGSW	DHP	FAQ	JK	TR	OML	NE	IX	BV	UY
D	YUSX	JDL	PCH	AK	MT	QBE	RN	OW	GI	VF
E	WVOI	UPH	CAQ	LS	DX	GBM	FT	YJ	ER	NK
F	FWBP	EKL	CHS	GV	NM	OYU	TA	XD	JI	RQ
G	GNRQ	WBD	YKP	UC	IL	VFH	TE	JX	AM	OS
H	HUFX	ISO	NGK	TJ	PA	WER	DC	YM	VL	BQ
I	BUWH	VAL	TOK	NI	PY	GMX	SD	EQ	JF	CR
J	OQCN	RHM	BUY	XW	FA	JST	PD	EL	IG	KV
K	ICHQ	YVP	AKE	JM	DX	LRT	BN	UW	OG	FS
L	XGIR	SFO	AUE	YC	NT	KJH	PM	LQ	BV	WD
M	AYKT	VFG	HEO	WS	BQ	NCL	UP	RJ	DI	XM
N	WSXT	LCN	MAY	UG	BO	HPJ	IR	VF	QK	ED
O	PJLT	FSV	GWY	EO	DR	HBN	KI	UQ	CA	MX
P	EPAB	JUD	VLF	IY	TR	SMQ	WK	NG	XO	CH
Q	YRSB	XJH	INW	KA	DC	OEQ	UL	FM	PV	TG
R	RTYA	LGX	KVM	NU	PI	OSW	QF	DE	BC	JH
S	YGOM	UBK	NRD	QE	SF	HLI	CP	XV	WJ	AT
T	FOCV	RAX	YBK	PS	GH	MEN	TQ	DW	JU	LI
U	IUGE	WRF	PVN	SB	HA	TCD	YM	QX	JO	LK
V	GNTJ	CIA	BXY	UQ	OE	WHM	FV	SL	KR	DP
W	TSAM	EQV	JPB	DH	FI	KNO	WU	YL	XG	RC
X	KQYA	OGP	RVN	EM	UW	DBJ	IL	CX	SH	FT
Y	VLHD	APU	ERJ	TK	MW	GQC	XY	IN	OB	SF

NAVAIDS

Id	Name	Channel	Position	Elevation
DAN	Incirlik	21	N37 00.950 E035 26.883	243
AKR	Akrotiri	107	N34 34.765 E032 57.769	147
PHA	Paphos	79	N34 42.997 E032 28.963	35
RMD	Ramat David	84	N32 39.892 E035 11.265	136
OS66	Kuweires Military Aviation Institute	36	N36 11.362 E037 34.226	1200

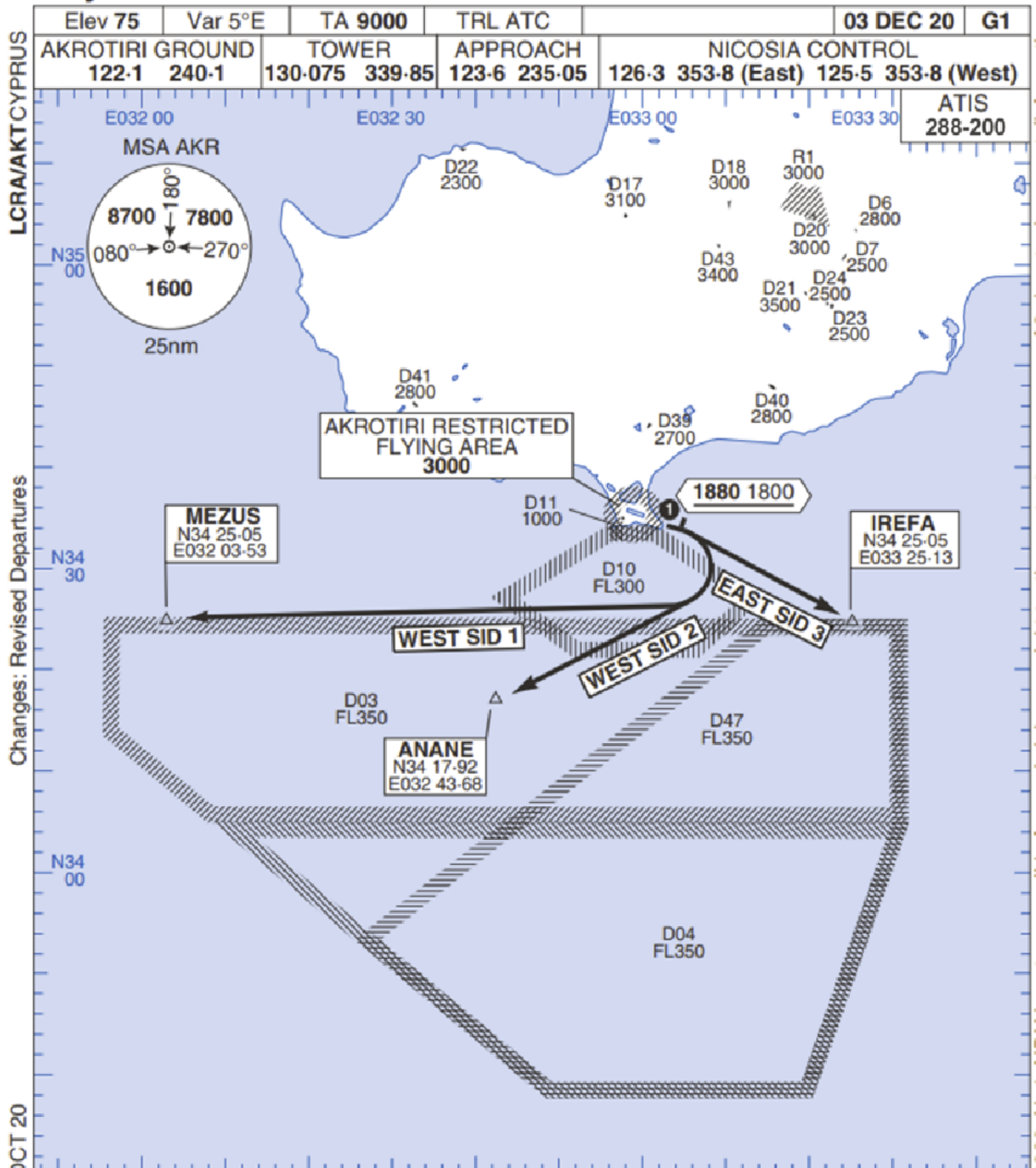
**FOR DCS
 USE ONLY**



ATIS	AKROTIRI GND	AKROTIRI TWR	OVERLORD CONTROL	TACAN	FIELD ELEVATION
288.20 MHz	240.10 122.10	339.85 130.075	377.8	AKR 107X	75 [ft] 23 [m]

Rwy 10 OMNIDIRECTIONAL DEPARTURES

AKROTIRI



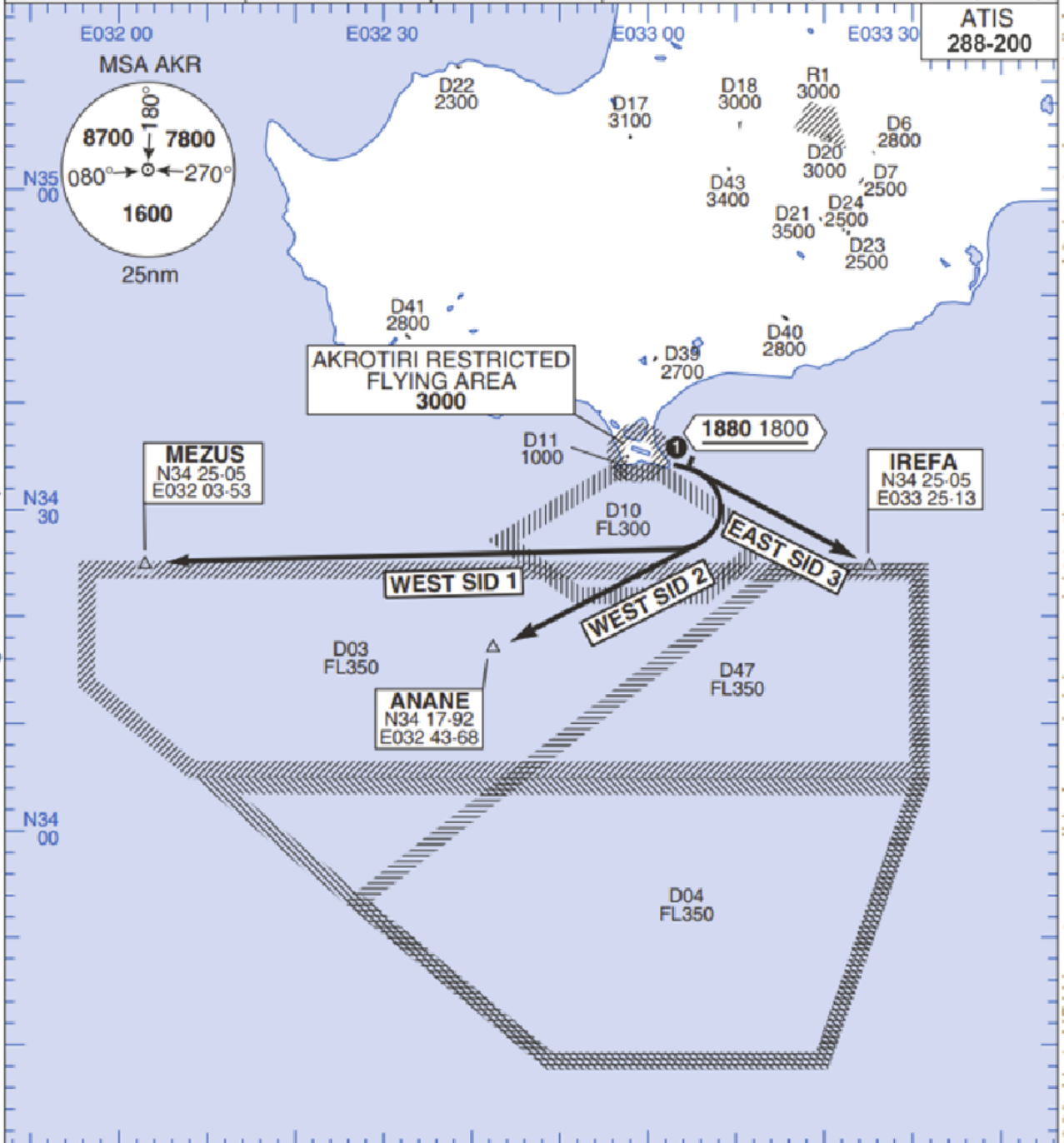
LCRA/AKTCYPRUS

Changes: Revised Departures

No1 AIDU Last Amended 06 OCT 20

© UK MOD Crown Copyright 2020. No1 AIDU is not responsible for, and claims no right to, the content or accuracy of 3rd party documents/information.

Elev 75	Var 5°E	TA 9000	TRL ATC		03 DEC 20	G1	
AKROTIRI GROUND 122-1 240-1		TOWER 130-075 339-85		APPROACH 123-6 235-05		NICOSIA CONTROL 126-3 353-8 (East) 125-5 353-8 (West)	



- ① Minimum climb gradient 7% to 1880 1800 for obstacle and operational purposes.
- 2. No turns before DER.
- 3. Turns to north of Rwy **prohibited**.
- 4. Acft unable to locate MEZUS/ANANE/IREFA should request radar vectors from ATC.

SID	RWY	ROUTEING (Including Mnm Noise Routes)
WEST SID 1	10 103°M	Ahead on Rwy Tr to 1880 1800, then right direct to MEZUS. SID terminates at 9000.
WEST SID 2		Ahead on Rwy Tr to 1880 1800, then right direct to ANANE. SID terminates at 9000.
EAST SID 3		Ahead on Rwy Tr to 1880 1800 then right direct to IREFA. SID terminates at 9000.

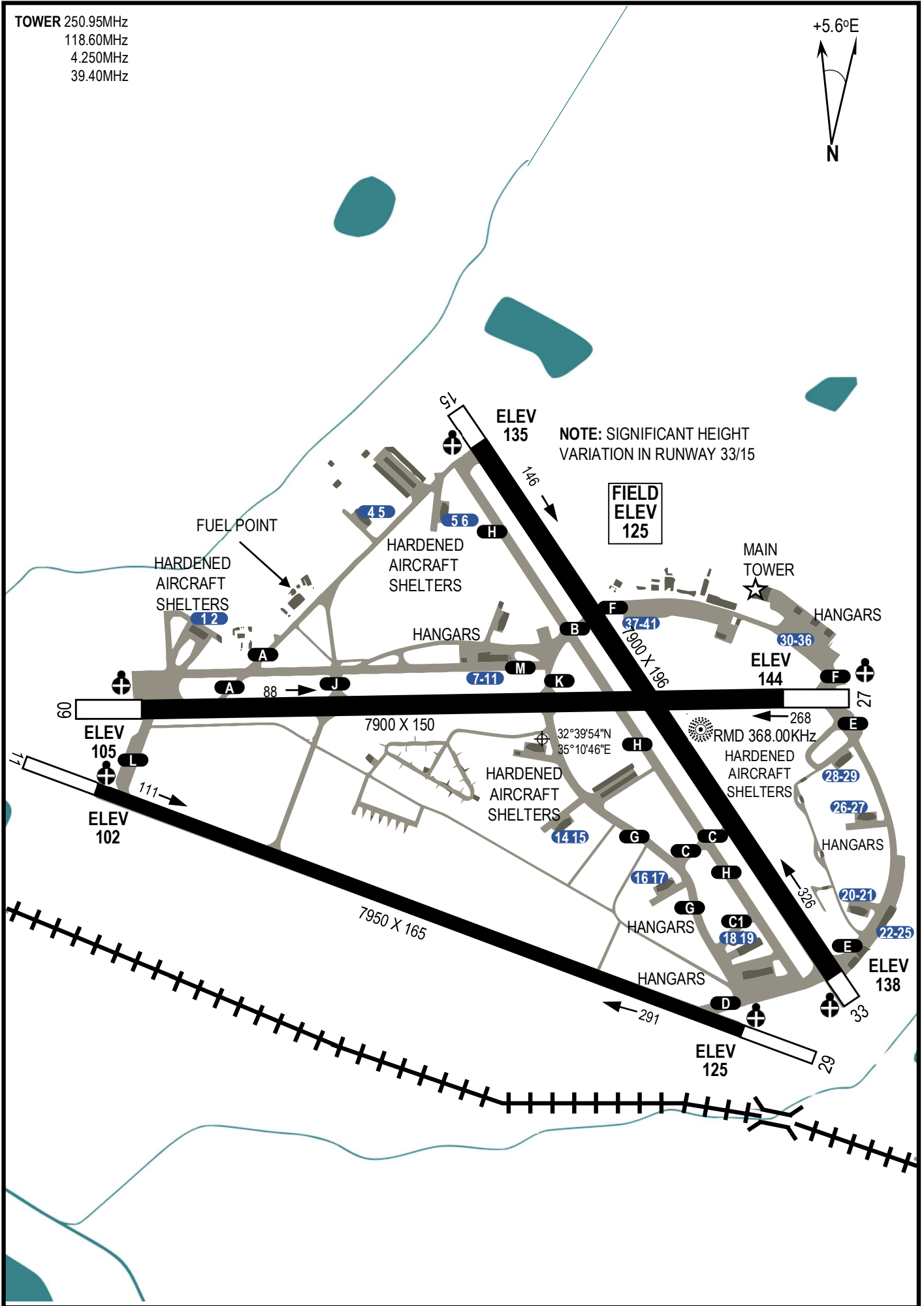
NOT AVAILABLE

TOWER 250.95MHz
118.60MHz
4.250MHz
39.40MHz



DCS SYRIA EFFECTIVE: 19 AUG 2020

DCS SYRIA EFFECTIVE: 19 AUG 2020



NOT AVAILABLE

NOT AVAILABLE